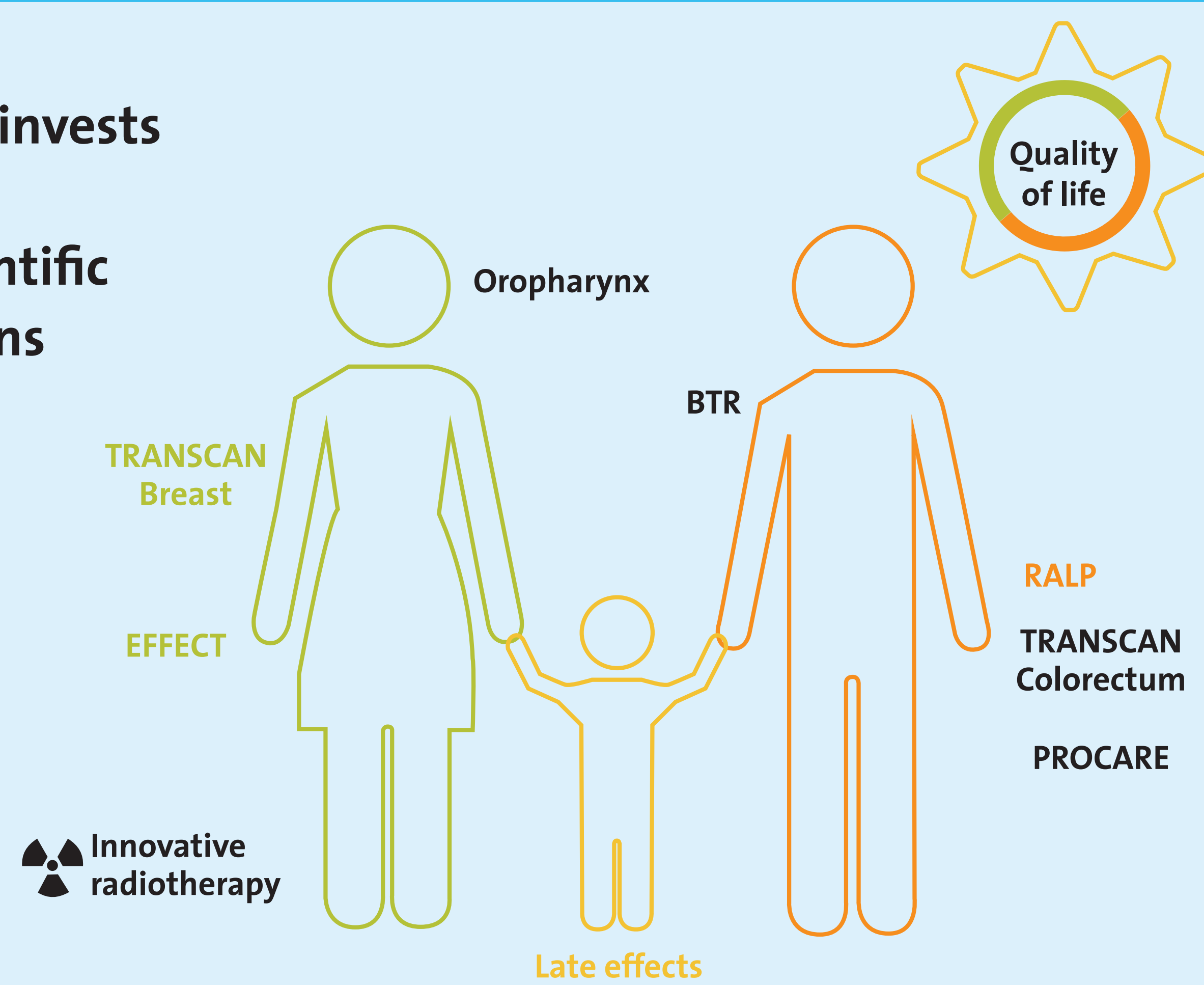


## INTRODUCTION

### Financial support



- In addition to the standard cancer registration, BCR invests in specific registration projects
- In collaboration with experts from medical and scientific associations, governmental and patient organisations
- Purpose:
  - To evaluate quality of care
  - To map variation in treatment patterns and outcome of cancer patients
  - To assess adherence to clinical guidelines
  - To identify optimal treatment(s)
  - To offer feedback to healthcare providers
- To facilitate further research

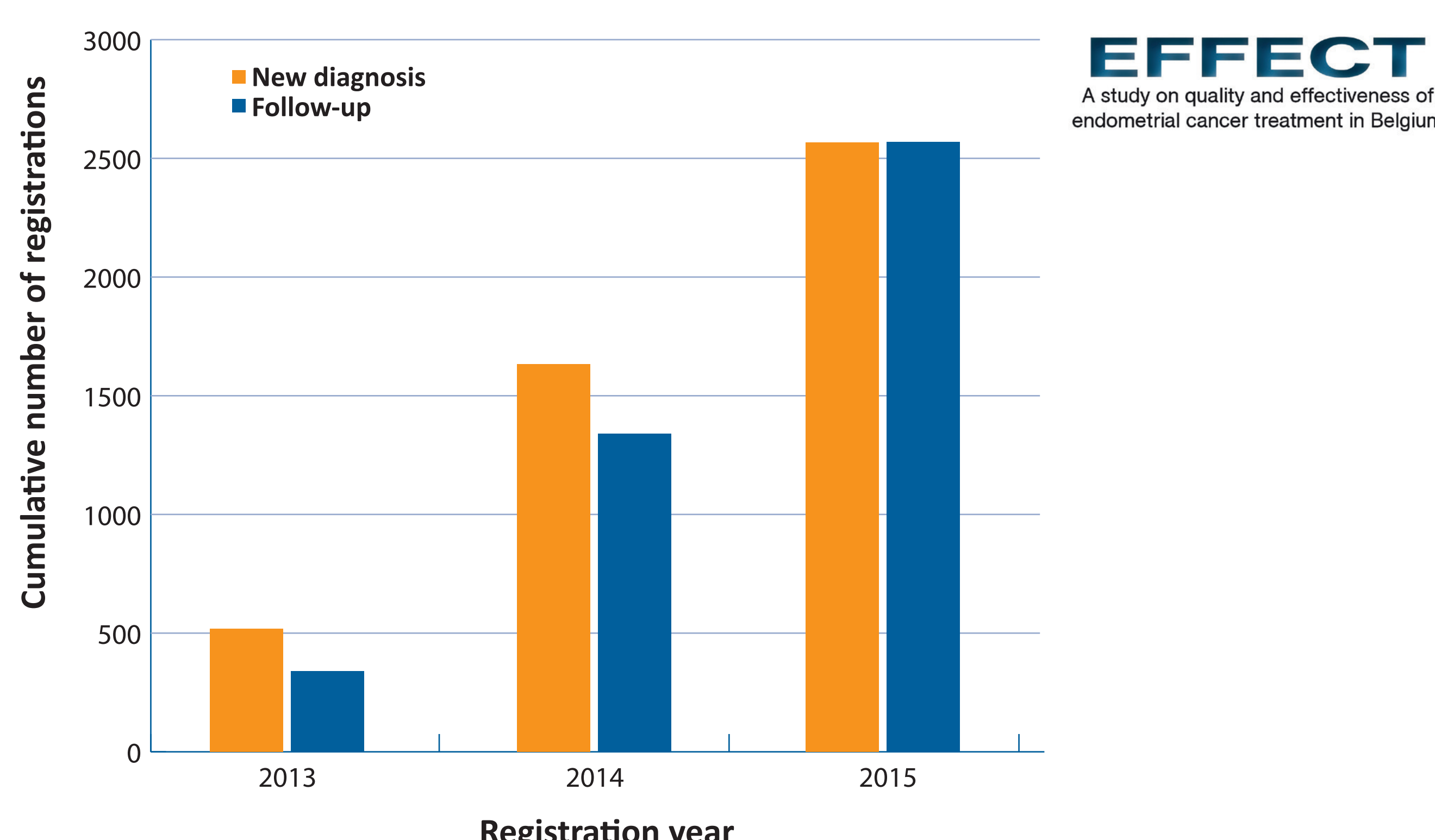


More details: [www.kankerregister.org/Projectregistratie](http://www.kankerregister.org/Projectregistratie); [www.registreducancer.org/Enregistrement\\_specifique](http://www.registreducancer.org/Enregistrement_specifique)

## OVERVIEW OF THE PROJECTS

### Study on the Effectiveness of Endometrial Cancer Treatment – EFFECT (online registration since February 2013)

- Multicentric prospective registration of uterine cancer, with diagnosis as from 1 January 2012
- Initiative of AntiCancer Fund, representatives of the Belgian association of gynaecologists and BCR
- Evaluate effectiveness and quality of treatments to improve outcome and standardisation of treatment
- 64 participating hospitals
- More than 2,500 new diagnosis and 2,500 follow-up documents were registered



### Quality of Life (started in February 2013)

- Longitudinal registration of data on quality of life of colorectal (ex-) cancer patients
- In collaboration with 'Kom op tegen Kanker'
- A total of 1,220 patients selected from 7 hospitals
- 571 patients (47%) responded and completed a written questionnaire with topics on care needs, socio-economic well being, perception of the disease, ...



### Robot-Assisted Laparoscopic Radical Prostatectomy - RALP (online registration since November 2009)

- Evaluate the outcome and quality of care of robot assisted laparoscopic prostatectomy: a minimal invasive type of surgery to treat prostate cancer
- Initiative of the Belgian Association of Urology (BAU) and the National Institute of Health and Disability Insurance (RIZIV-INAMI)
- Hospitals with an agreement with the RIZIV-INAMI engage to register their interventions and are reimbursed for the material used during this surgery
- So far, about 32,000 registrations from 26 participating hospitals



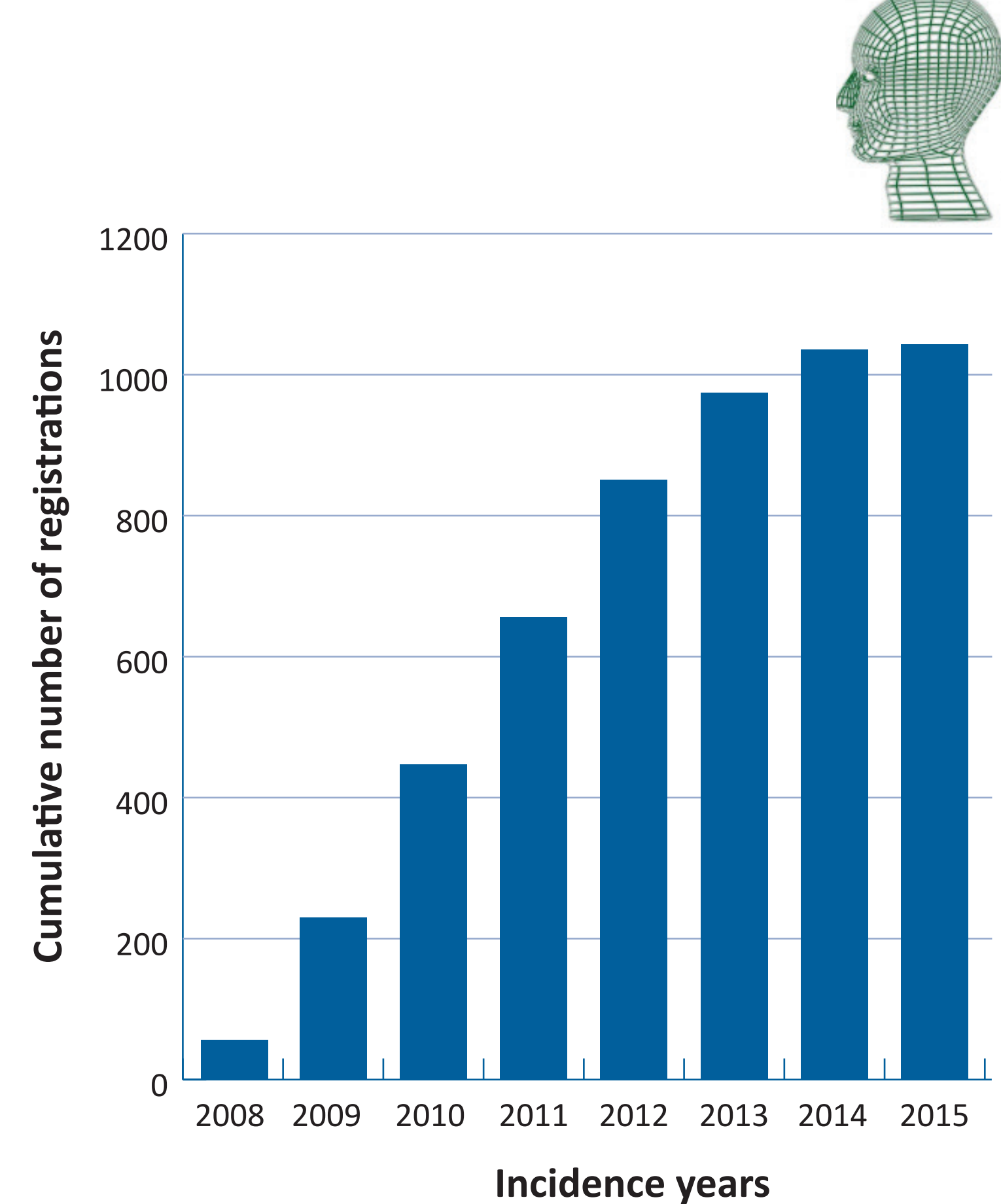
### Innovative Radiotherapy (online registration since October 2013)

- Investigate the use of innovative radiotherapy techniques: Stereotactic Body Radiotherapy (SBRT) and Accelerated Partial Breast Irradiation and Boost (APBI/Boost)
- Evaluate the conditions for reimbursement of these techniques by the RIZIV-INAMI
- Collaboration between RIZIV-INAMI, radiotherapy centres and BCR
- 16 hospitals registered 1,262 SBRT-treatments and 5 hospitals registered 315 APBI/Boost-treatments up to November 2015



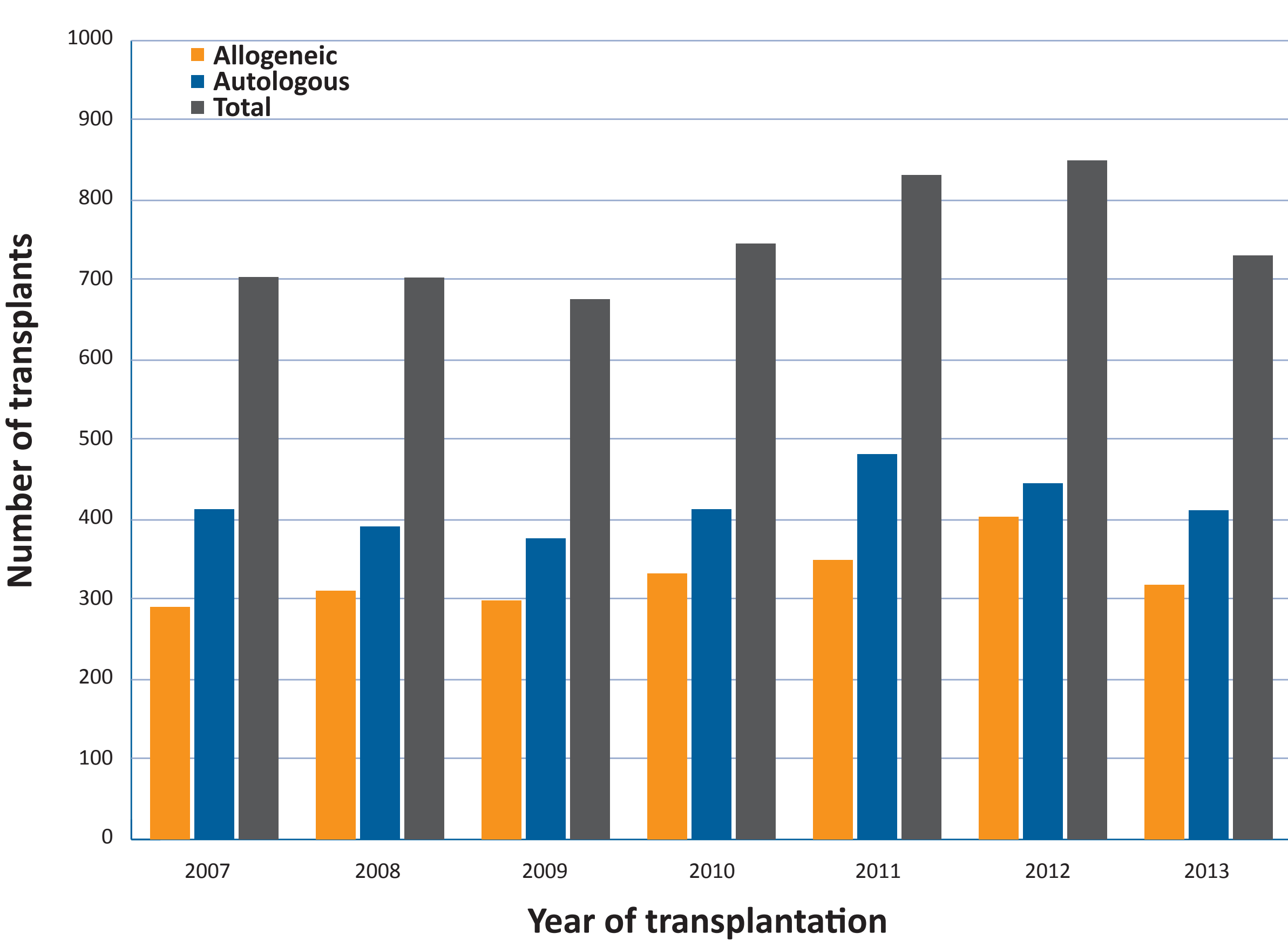
### Head & Neck - Oropharynx (online registration since August 2009)

- Registration of oropharyngeal tumours to describe and to evaluate different treatment patterns
- Initiative of the 'Vlaamse Werkgroep voor Hoofd- en Halstumoren' (VWHHT) and supported by the French-speaking working group
- Almost 1,300 new diagnosis were registered from 21 hospitals up to November 2015



### Belgian Transplant Registry - BTR (started in 2012)

- Collection of essential data on the activity of stem cell transplantations in Belgium in a central database
- Database enables further investigations by the BCR and the BHS, oncologic care programmes, scientific organisations,...
- The 22 participating centres registered 5,242 stem cell transplantations executed since 2007 up to 2013



### Era-net on Translational Cancer Research (TRANSCAN-Eranet) (started in 2015)

- European research project
- Examine the cause of disparity in survival of breast and colorectal cancers across European regions
- Participating countries: Belgium, France, Germany (Schleswig-Holstein), Italy (Genova, Latina, Ragusa, Reggio-Emilia, Varese), Poland (Kielce), Slovenia and Spain (Granada, Girona)



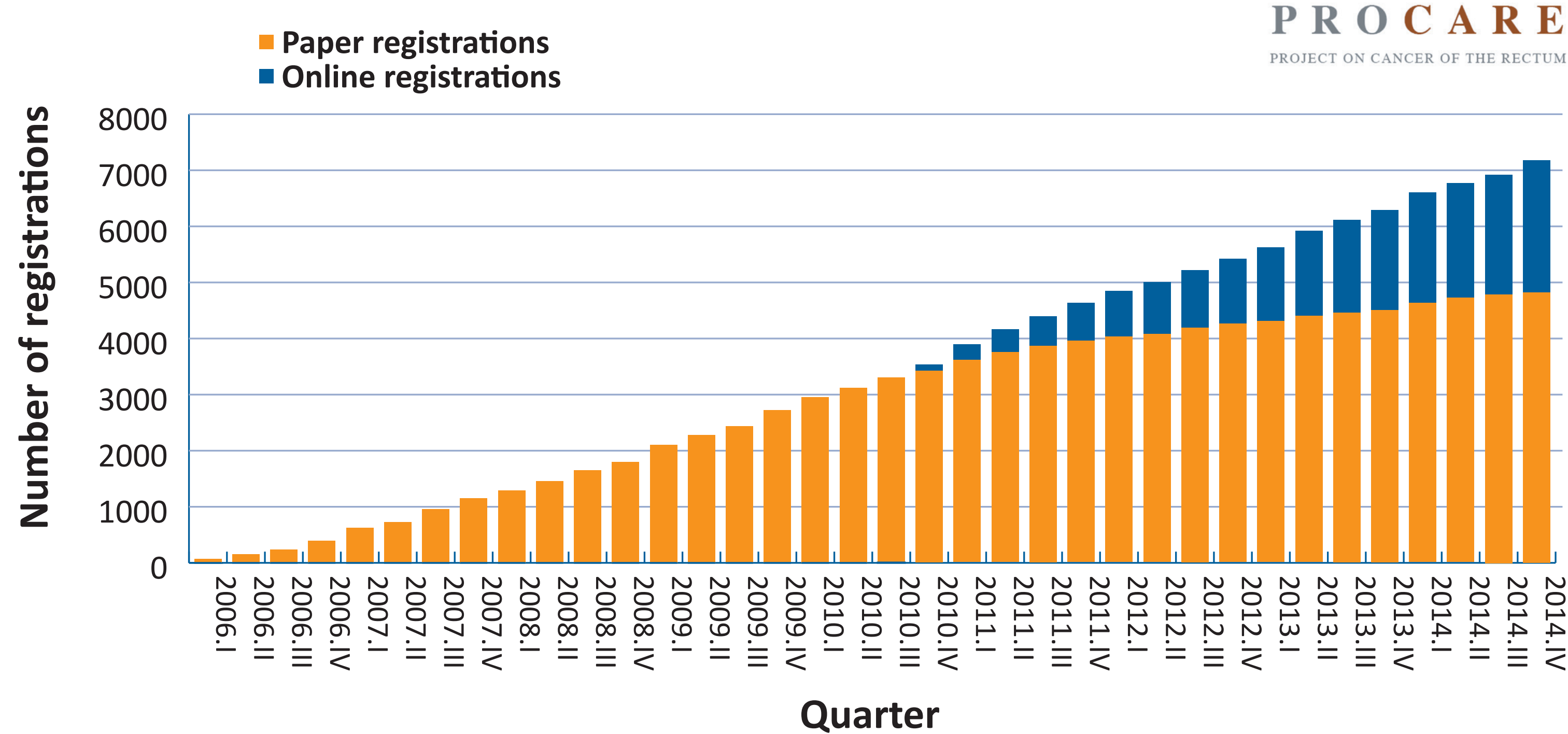
### Paediatrics: Late Effects (online registration foreseen in 2016)

- Follow-up of childhood cancer survivors to study late effects of cancer treatment
- Collaboration with paediatric hemato-oncologists and radiation oncologists from different childhood cancer centres
- Collection of information on the received cancer treatment, pathology data, the presence of congenital and pre-existing diseases or conditions and the acute and late effects



### PROject on Cancer of the Rectum - PROCARE

- Multidisciplinary prospective registration to improve outcome in patients with rectal cancer and to limit the diagnostic and therapeutic variability
- Supported by several professional medical associations
- Ended on 31<sup>st</sup> of December 2014 after 12 successful years and more than 7,600 registrations
- A new online registration project on rectal cancer is planned
- More information and publications: <http://procare.kankerregister.be/procare>



## Contact

Belgian Cancer Registry  
Koningsstraat / Rue Royale 215 - 1210 Brussels  
[www.kankerregister.org](http://www.kankerregister.org) - [www.registreducancer.org](http://www.registreducancer.org)  
[info@kankerregister.org](mailto:info@kankerregister.org) - [info@registreducancer.org](mailto:info@registreducancer.org)

