

Belgian Cancer Registry



Cancer Fact Sheet **Mesothelioma**

ICD10 : C45

Belgium 2021

1. Cancer Incidence

1.1. Number of new diagnoses and incidence rates

Table 1: Mesothelioma: Average age at diagnosis, number of new cancer diagnoses (N), crude rate (CR), age-standardised incidence rates (ESR and WSR) and cumulative risk by sex and region, 2021

Males	Age (years)	N	CR	ESR	WSR	CRi
Belgium	73.5	241	4.2	2.7	1.8	0.20
Brussels-Capital Region	68.5	11	1.8	1.8	1.2	0.15
Flemish Region	75.0	168	5.1	2.9	1.9	0.21
Walloon Region	70.4	62	3.5	2.5	1.6	0.19

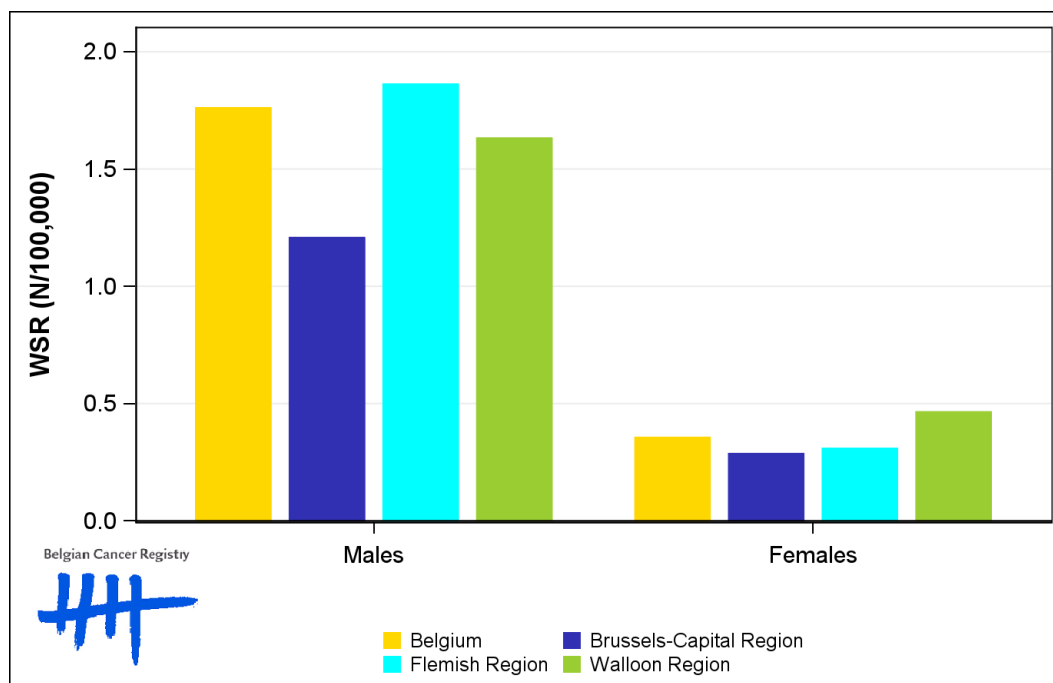
Females	Age (years)	N	CR	ESR	WSR	CRi
Belgium	73.0	56	1.0	0.5	0.4	<0.1
Brussels-Capital Region	78.0	5	0.8	0.5	0.3	<0.1
Flemish Region	72.7	29	0.9	0.5	0.3	<0.1
Walloon Region	72.3	22	1.2	0.7	0.5	<0.1

CR=Crude (all ages) Rate (N/100,000 person-years)
 ESR (1976)=Age-Standardised Rate, using the European Standard Population (N/100,000 person-years)
 WSR=Age-Standardised Rate, using the World Standard Population (N/100,000 person-years)
 CRi=Cumulative Risk for 0-74 years (%)

Belgian Cancer Registry



Figure 1: Mesothelioma: Age-standardised incidence rates by sex and region, 2021



1.2. Age-specific incidence rates

Table 2: Mesothelioma: Age-specific incidence rates, crude rate (CR) and age-standardised incidence rates (ESR and WSR) by sex, Belgium 2021

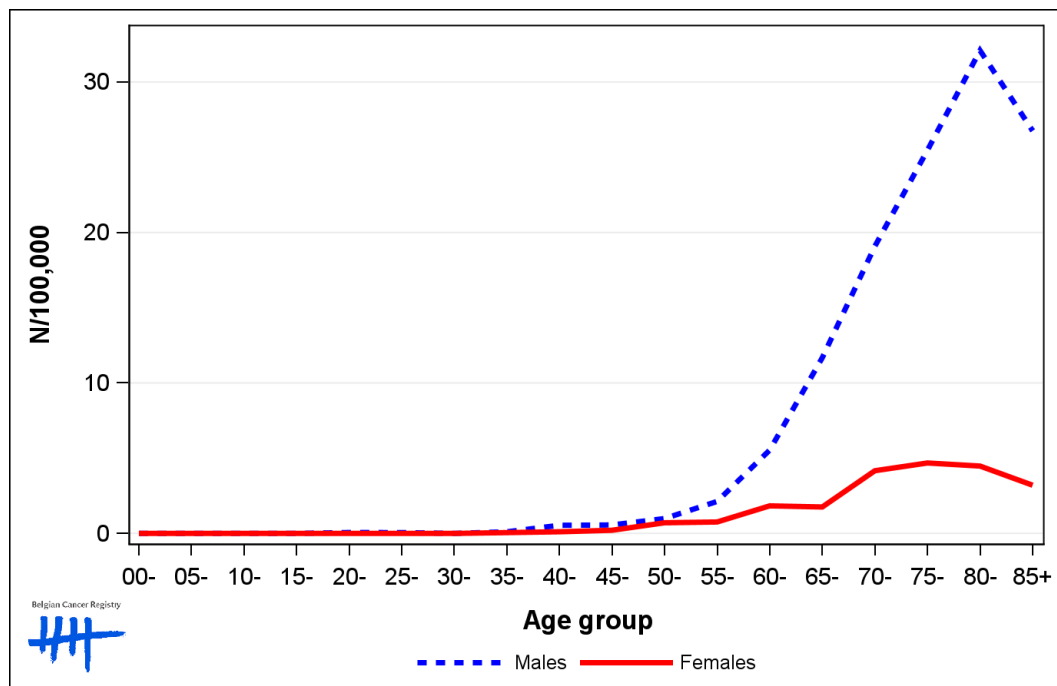
	00-	05-	10-	15-	20-	25-	30-	35-	40-	45-	50-	55-	60-	65-	70-	75-	80-	85+	CR	ESR	WSR
Males	0.0	0.0	0.0	0.0	0.0	0.0	0.0	0.5	0.5	1.1	1.0	1.2	6.9	13.7	14.7	23.5	32.9	30.6	4.2	2.7	1.8
Females	0.0	0.0	0.0	0.0	0.0	0.0	0.0	0.0	0.0	0.0	0.3	0.7	2.4	1.2	4.7	4.7	4.3	3.2	1.0	0.5	0.4

CR=Crude (all ages) Rate (N/100,000 person-years)

ESR (1976)=Age-Standardised Rate, using the European Standard Population (N/100,000 person-years)

WSR=Age-Standardised Rate, using the World Standard Population (N/100,000 person-years)

Figure 2: Mesothelioma: Age-specific incidence rates by sex, 2017-2021



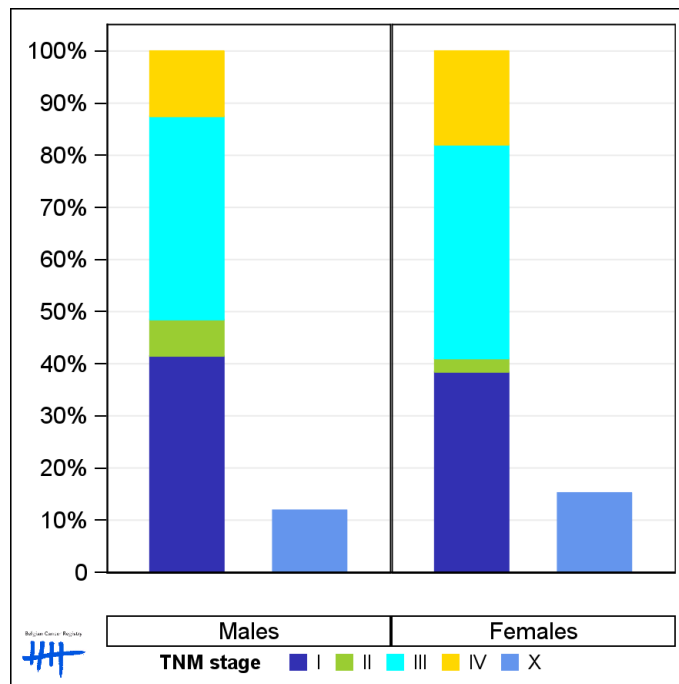
1.3. Combined stage

Table 3: Mesothelioma: Distribution of combined stage by sex, Belgium 2021

	Stage I	Stage II	Stage III	Stage IV	Stage X	Stage NA	Total
Males							
N	83	14	78	25	27	14	241
%	34.4	5.8	32.4	10.4	11.2	5.8	100
Females							
N	15	1	16	7	7	10	56
%	26.8	1.8	28.6	12.5	12.5	17.9	100

Staging according to the TNM 8th edition (Ref: Brierley JD, Gospodarowicz MK, Wittekind Ch. TNM classification of malignant tumours, UICC 8th edition)
 Combined TNM stage : compilation of pathological (pTNM) and clinical (cTNM) stage. pTNM prevails over cTNM, except when cTNM stage is IV
 Stage X: diagnoses with an unknown stage
 Stage NA: diagnoses with a histological diagnosis where no stage can be evaluated (Not Applicable)

Figure 3: Mesothelioma: Bar chart of known combined stage by sex, Belgium 2021



1.4. Trends in incidence

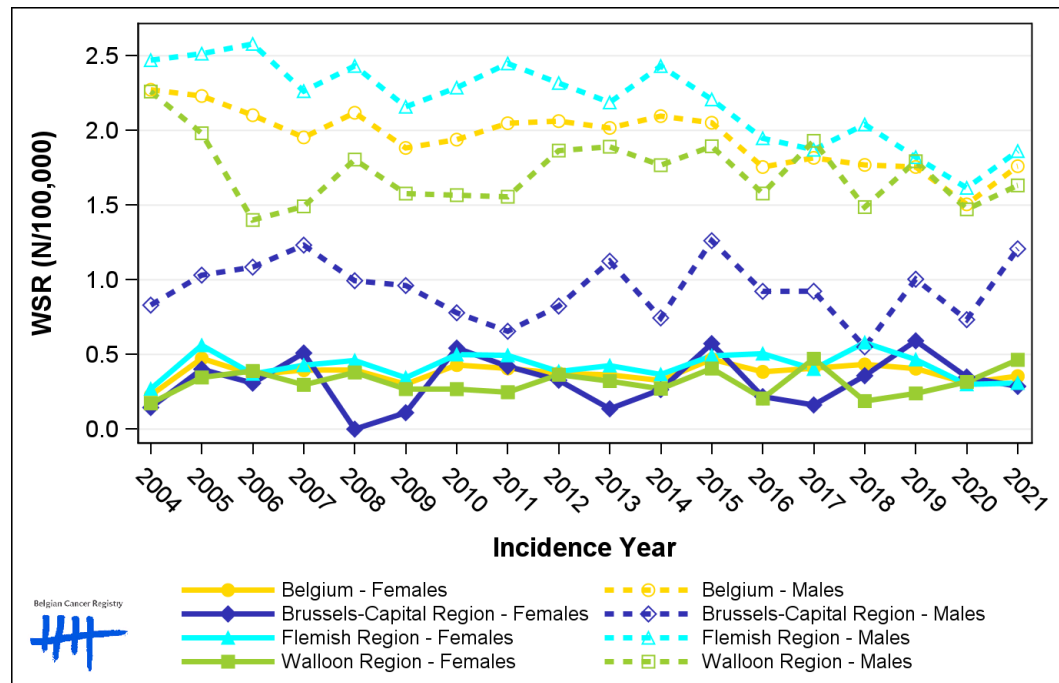
Table 4: Mesothelioma: Age-standardised incidence rates (WSR) and average annual percentage change (AAPC) by incidence year, sex and region

Males	2007	2008	2009	2010	2011	2012	2013	2014	2015	2016	2017	2018	2019	2020	2021	AAPC	95% CI
Belgium	2.0	2.1	1.9	1.9	2.0	2.1	2.0	2.1	2.1	1.8	1.8	1.8	1.8	1.5	1.8	-1.5	[-2.2; -0.8]
Brussels-Capital Region	1.2	1.0	1.0	0.8	0.7	0.8	1.1	0.7	1.3	0.9	0.9	0.6	1.0	0.7	1.2	-0.6	[-3.8; 2.6]
Flemish Region	2.3	2.4	2.2	2.3	2.4	2.3	2.2	2.4	2.2	1.9	1.9	2.0	1.8	1.6	1.9	-2.0	[-2.8; -1.1]
Walloon Region	1.5	1.8	1.6	1.6	1.6	1.9	1.9	1.8	1.9	1.6	1.9	1.5	1.8	1.5	1.6	0.0	[-1.1; 1.2]

Females	2007	2008	2009	2010	2011	2012	2013	2014	2015	2016	2017	2018	2019	2020	2021	AAPC	95% CI
Belgium	0.4	0.4	0.3	0.4	0.4	0.4	0.4	0.3	0.5	0.4	0.4	0.4	0.4	0.3	0.4	-0.1	[-1.8; 1.5]
Brussels-Capital Region	0.5	0.0	0.1	0.5	0.4	0.3	0.1	0.3	0.6	0.2	0.2	0.4	0.6	0.3	0.3	0.0	
Flemish Region	0.4	0.5	0.3	0.5	0.5	0.4	0.4	0.4	0.5	0.5	0.4	0.6	0.5	0.3	0.3	-1.0	[-3.4; 1.5]
Walloon Region	0.3	0.4	0.3	0.3	0.2	0.4	0.3	0.3	0.4	0.2	0.5	0.2	0.2	0.3	0.5	0.4	[-3.3; 4.1]

WSR=Age-Standardised Rate, using the World Standard Population (N/100,000 person-years)
 AAPC = Average Annual Percentage Change over the 2007-2021 period

Figure 4: Mesothelioma: Age-standardised incidence rates (WSR) by incidence year, sex and region



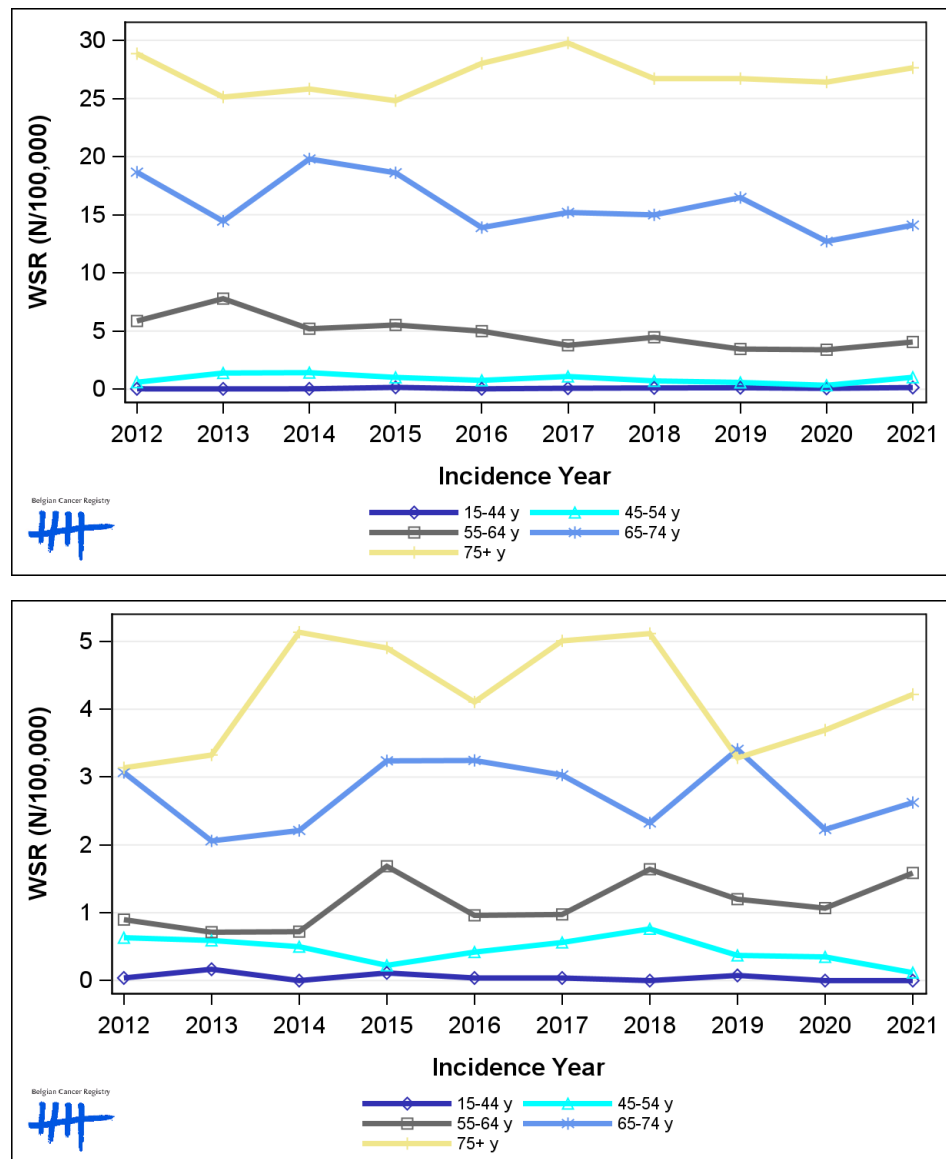
1.5. Incidence by broad age groups

Table 5: Mesothelioma: Number of new diagnoses and age-standardised incidence rates (WSR) by broad age groups and incidence year by sex, Belgium

	N											WSR									
	2012	2013	2014	2015	2016	2017	2018	2019	2020	2021	2012	2013	2014	2015	2016	2017	2018	2019	2020	2021	
Males																					
All ages	236	228	245	240	221	238	232	236	214	241	2.1	2.0	2.1	2.1	1.8	1.8	1.8	1.8	1.5	1.8	
0-14 y	0	0	0	0	0	0	0	0	0	0	0.0	0.0	0.0	0.0	0.0	0.0	0.0	0.0	0.0	0.0	
15-44 y	1	1	1	4	1	2	3	3	2	4	<0.1	<0.1	<0.1	0.2	<0.1	<0.1	0.1	0.1	<0.1	0.1	
45-54 y	5	12	12	9	6	9	6	5	3	8	0.6	1.4	1.4	1.0	0.8	1.1	0.7	0.6	0.3	1.0	
55-64 y	39	52	36	38	34	27	32	25	25	30	5.9	7.8	5.2	5.5	5.0	3.8	4.5	3.5	3.4	4.1	
65-74 y	87	68	94	91	70	81	83	93	73	81	18.7	14.5	19.8	18.6	13.9	15.2	15.0	16.5	12.7	14.1	
75+ y	104	95	102	98	110	119	108	110	111	118	28.9	25.1	25.8	24.8	28.0	29.8	26.7	26.7	26.4	27.6	
Females																					
All ages	44	44	49	65	54	62	62	54	47	56	0.4	0.4	0.3	0.5	0.4	0.4	0.4	0.4	0.3	0.4	
0-14 y	0	0	0	0	0	0	0	0	0	0	0.0	0.0	0.0	0.0	0.0	0.0	0.0	0.0	0.0	0.0	
15-44 y	1	4	0	3	1	1	0	2	0	0	<0.1	0.2	0.0	0.1	<0.1	<0.1	0.0	<0.1	0.0	0.0	
45-54 y	5	5	4	2	3	5	6	3	3	1	0.6	0.6	0.5	0.2	0.4	0.6	0.8	0.4	0.3	0.1	
55-64 y	6	5	5	12	7	7	12	9	8	12	0.9	0.7	0.7	1.7	1.0	1.0	1.6	1.2	1.1	1.6	
65-74 y	15	11	12	17	18	18	14	22	14	18	3.1	2.1	2.2	3.2	3.2	3.0	2.3	3.4	2.2	2.6	
75+ y	17	19	28	31	25	31	30	18	22	25	3.1	3.3	5.1	4.9	4.1	5.0	5.1	3.3	3.7	4.2	

N=Number of invasive tumours
WSR=Age-Standardised Rate, using the World Standard Population (N/100,000 person-years)

Figure 5: Mesothelioma: Age-standardised incidence rates (WSR) versus incidence year by broad age groups for males (top) and females (bottom), Belgium



2. Relative survival

Table 6: Mesothelioma: 5-year relative survival proportion by sex, age group and region, Belgium 2017-2021

	5-year relative survival 2017-2021 (%)					
	Males			Females		
	N at risk	estimate	95% CI	N at risk	estimate	95% CI
Overall	1,159	9.2	[6.8, 11.9]	281	16.1	[10.5, 22.8]
Age group						
15-59 years	87	22.7	[13.0, 34.2]	36	NA (N<50)	-
60-74 years	508	10.3	[6.7, 15.0]	119	23.2	[14.3, 33.6]
75+ years	564	5.4	[2.8, 9.2]	126	10.9	[4.8, 20.3]
Region						
Brussels-Capital Region	39	NA (N<50)	-	21	NA (N<50)	-
Flemish Region	788	8.8	[6.1, 12.1]	179	17.4	[10.9, 25.1]
Walloon Region	332	10.3	[5.9, 16.2]	81	17.2	[6.1, 34.0]

Figure 6: Mesothelioma: relative survival proportion by sex, Belgium 2017-2021

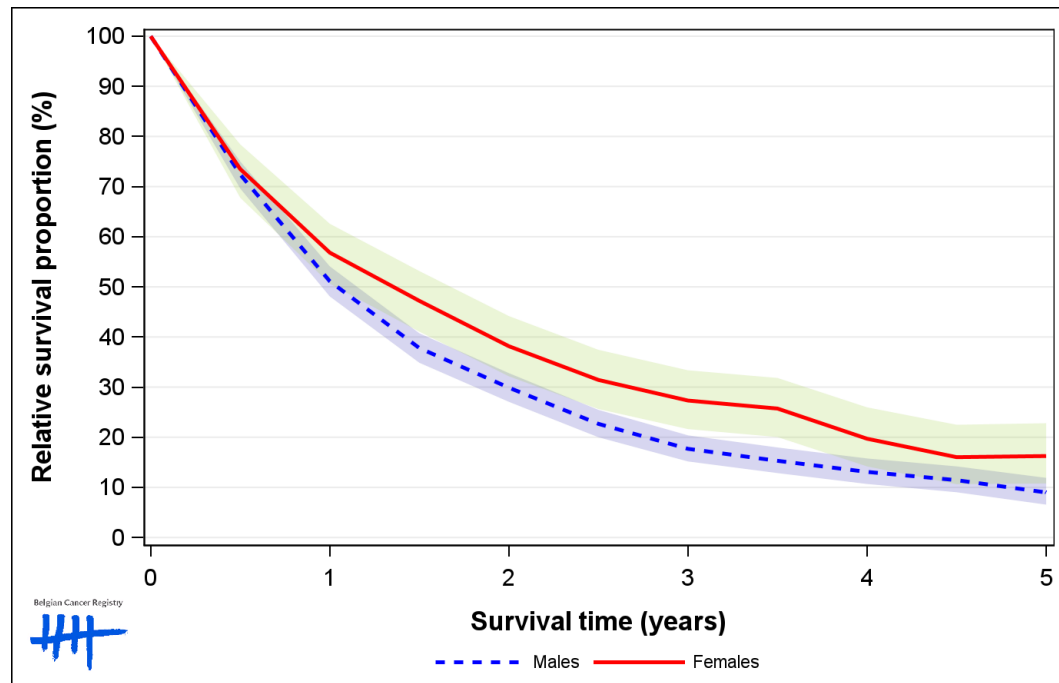


Figure 7: Mesothelioma: relative survival proportion by age group in males, Belgium 2017-2021

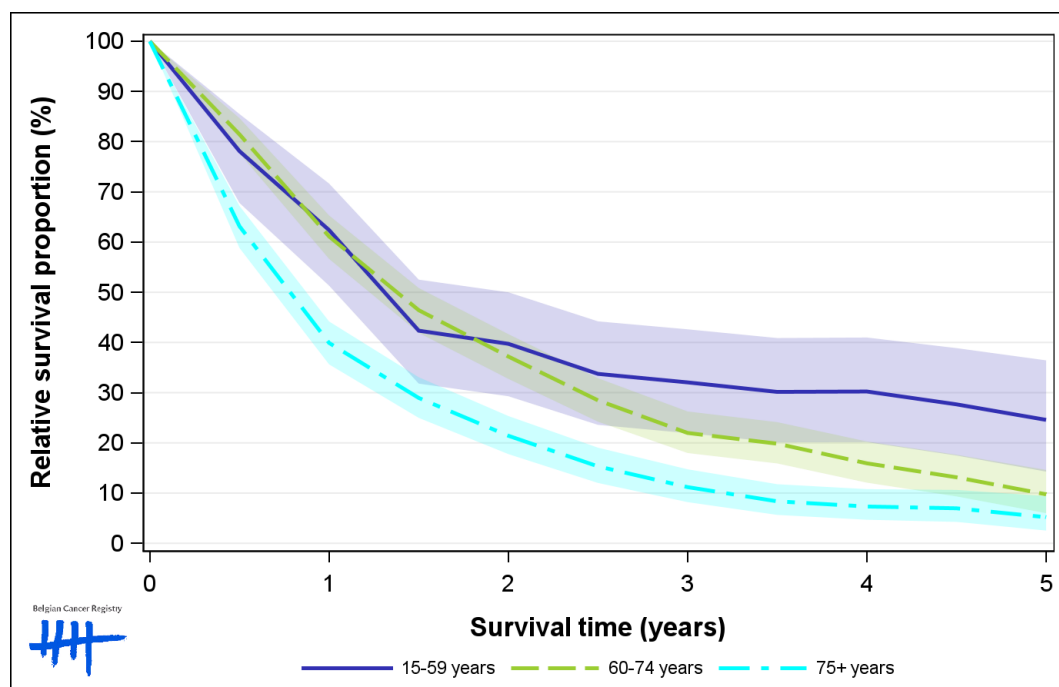


Figure 8: Mesothelioma: relative survival proportion by age group in females, Belgium 2017-2021

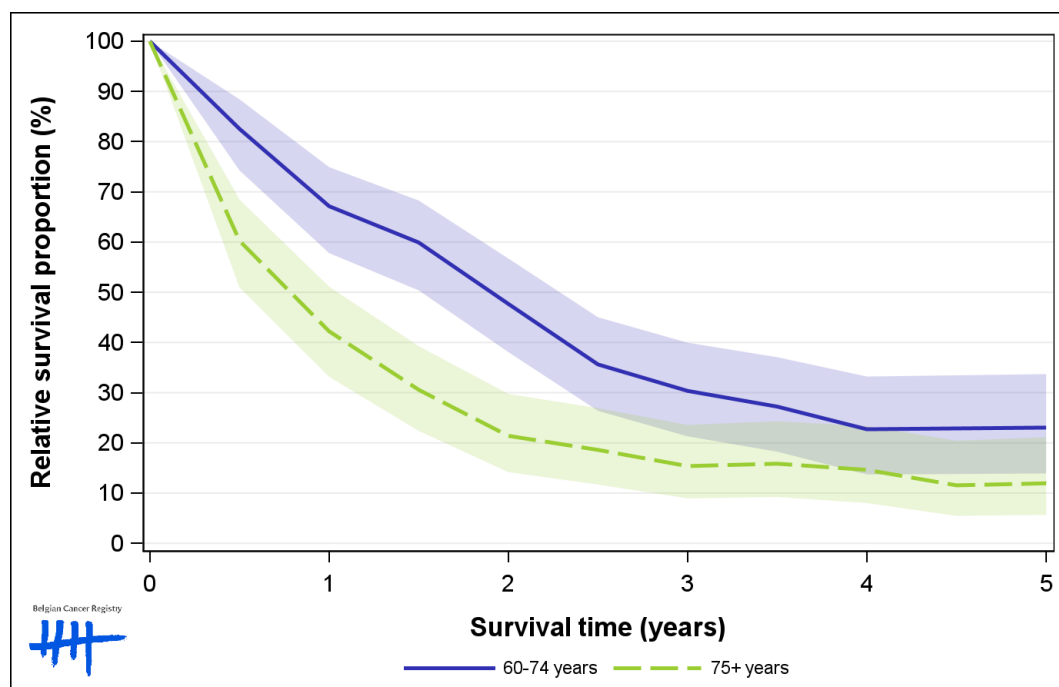


Figure 9: Mesothelioma: relative survival proportion by region in males, Belgium 2017-2021

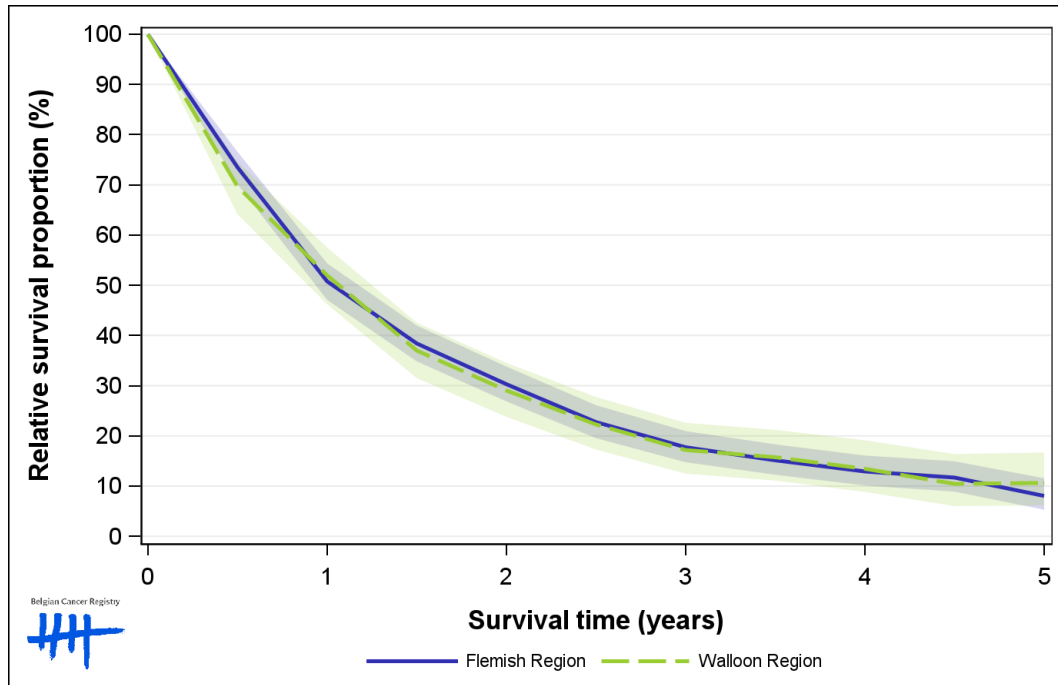


Figure 10: Mesothelioma: relative survival proportion by region in females, Belgium 2017-2021

