

Belgian Cancer Registry



Cancer Fact Sheet **Bladder Cancer**

ICD10 : C67

Belgium 2020

1. Cancer Incidence

1.1. Number of new diagnoses and incidence rates

Table 1: Bladder Cancer: Average age at diagnosis, number of new cancer diagnoses (N), crude rate (CR), age-standardised incidence rates (ESR and WSR) and cumulative risk by sex and region, 2020

Males	Age (years)	N	CR	ESR	WSR	CRi
Belgium	73.9	1,854	32.8	21.2	13.5	1.56
Brussels-Capital Region	71.5	119	19.9	19.8	12.9	1.67
Flemish Region	74.8	1,104	33.7	19.7	12.4	1.39
Walloon Region	72.7	631	35.4	24.5	15.7	1.85

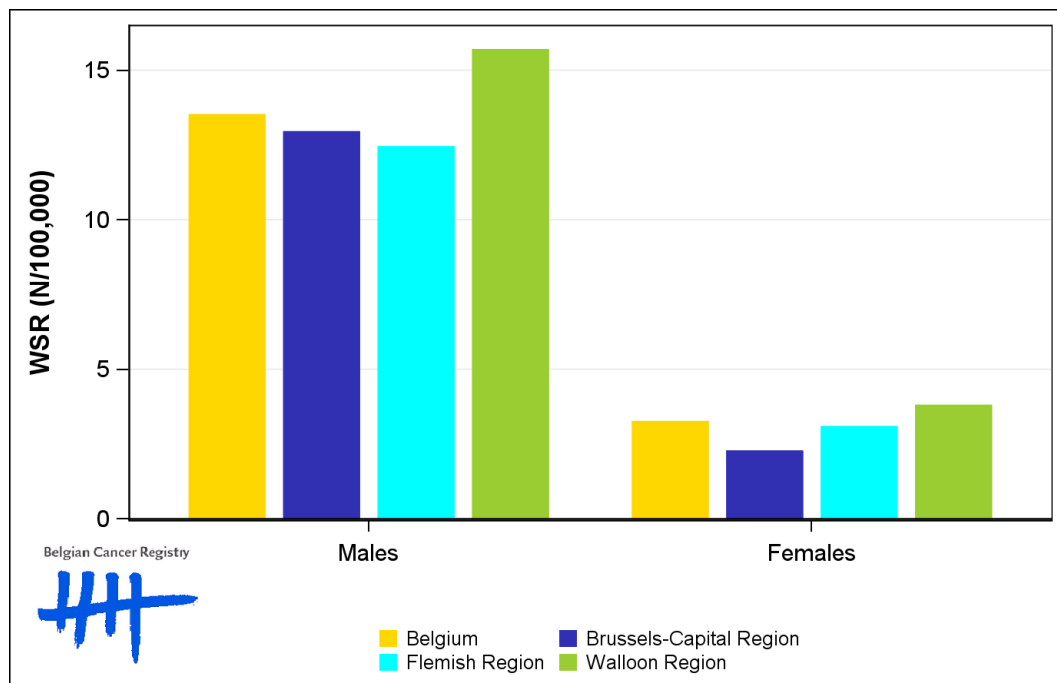
Females	Age (years)	N	CR	ESR	WSR	CRi
Belgium	74.2	527	9.0	5.0	3.3	0.39
Brussels-Capital Region	72.4	27	4.4	3.3	2.3	0.28
Flemish Region	75.0	312	9.3	4.7	3.1	0.34
Walloon Region	73.1	188	10.1	5.8	3.8	0.49

CR=Crude (all ages) Rate (N/100,000 person-years)
 ESR (1976)=Age-Standardised Rate, using the European Standard Population (N/100,000 person-years)
 WSR=Age-Standardised Rate, using the World Standard Population (N/100,000 person-years)
 CRi=Cumulative Risk for 0-74 years (%)

Belgian Cancer Registry



Figure 1: Bladder Cancer: Age-standardised incidence rates by sex and region, 2020



1.2. Age-specific incidence rates

Table 2: Bladder Cancer: Age-specific incidence rates, crude rate (CR) and age-standardised incidence rates (ESR and WSR) by sex, Belgium 2020

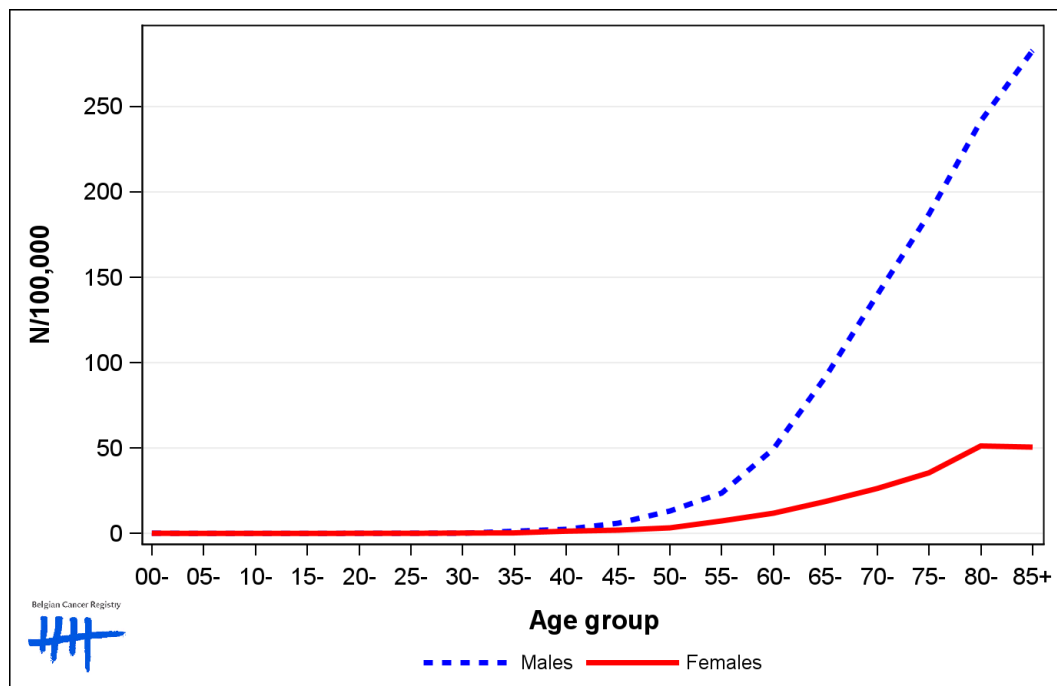
	00-	05-	10-	15-	20-	25-	30-	35-	40-	45-	50-	55-	60-	65-	70-	75-	80-	85+	CR	ESR	WSR
Males	0.0	0.0	0.0	0.0	0.0	0.0	0.0	1.1	1.3	5.2	10.7	21.0	46.5	99.6	129.1	179.6	221.6	269.0	32.8	21.2	13.5
Females	0.0	0.0	0.0	0.0	0.0	0.0	0.5	0.3	1.4	2.1	3.1	7.3	12.0	21.2	29.4	37.0	48.7	46.5	9.0	5.0	3.3

CR=Crude (all ages) Rate (N/100,000 person-years)

ESR (1976)=Age-Standardised Rate, using the European Standard Population (N/100,000 person-years)

WSR=Age-Standardised Rate, using the World Standard Population (N/100,000 person-years)

Figure 2: Bladder Cancer: Age-specific incidence rates by sex, 2016-2020



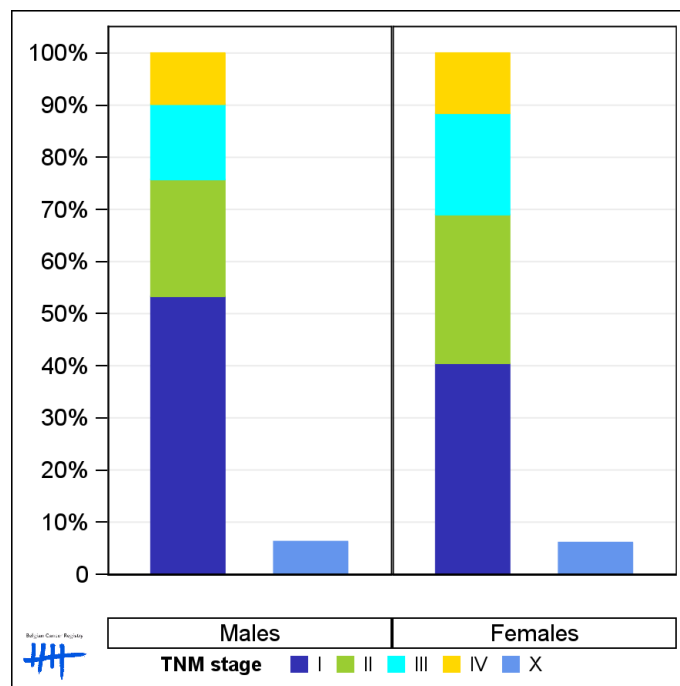
1.3. Combined stage

Table 3: Bladder Cancer: Distribution of combined stage by sex, Belgium 2020

	Stage I	Stage II	Stage III	Stage IV	Stage X	Stage NA	Total
Males							
N	926	389	251	170	116	2	1,854
%	49.9	21.0	13.5	9.2	6.3	0.1	100
Females							
N	200	141	96	57	32	1	527
%	38.0	26.8	18.2	10.8	6.1	0.2	100

Staging according to the TNM 8th edition (Ref: Brierley JD, Gospodarowicz MK, Wittekind Ch. TNM classification of malignant tumours, UICC 8th edition)
 Combined TNM stage : compilation of pathological (pTNM) and clinical (cTNM) stage. pTNM prevails over cTNM, except when cTNM stage is IV
 Stage X: diagnoses with an unknown stage
 Stage NA: diagnoses with a histological diagnosis where no stage can be evaluated (Not Applicable)

Figure 3: Bladder Cancer: Bar chart of known combined stage by sex, Belgium 2020



1.4. Trends in incidence

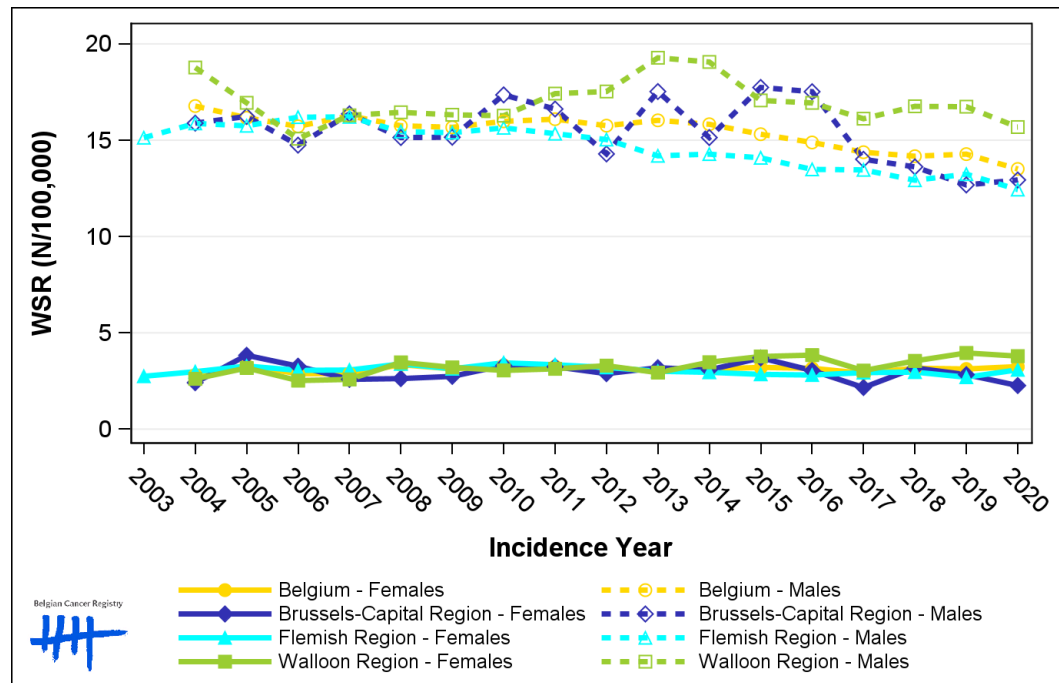
Table 4: Bladder Cancer: Age-standardised incidence rates (WSR) and average annual percentage change (AAPC) by incidence year, sex and region

Males	2006	2007	2008	2009	2010	2011	2012	2013	2014	2015	2016	2017	2018	2019	2020	AAPC	95% CI
Belgium	15.7	16.3	15.8	15.7	16.0	16.1	15.8	16.0	15.8	15.3	14.9	14.4	14.2	14.3	13.5	-1.1	[-1.3; -0.9]
Brussels-Capital Region	14.7	16.4	15.1	15.2	17.4	16.6	14.3	17.5	15.1	17.7	17.5	14.0	13.6	12.7	12.9	-1.5	[-2.5; -0.5]
Flemish Region	16.2	16.2	15.4	15.4	15.6	15.3	15.0	14.2	14.3	14.1	13.5	13.5	12.9	13.2	12.4	-1.8	[-2.1; -1.6]
Walloon Region	15.1	16.3	16.5	16.3	16.3	17.4	17.5	19.3	19.1	17.1	16.9	16.1	16.8	16.7	15.7	0.2	[-0.2; 0.7]

Females	2006	2007	2008	2009	2010	2011	2012	2013	2014	2015	2016	2017	2018	2019	2020	AAPC	95% CI
Belgium	2.9	2.9	3.3	3.1	3.3	3.3	3.2	3.0	3.1	3.2	3.2	2.9	3.2	3.1	3.3	0.2	[-0.4; 0.8]
Brussels-Capital Region	3.3	2.6	2.6	2.7	3.3	3.2	2.9	3.2	3.1	3.7	3.0	2.2	3.2	2.8	2.3	-1.1	[-2.8; 0.7]
Flemish Region	3.1	3.1	3.4	3.1	3.4	3.3	3.2	3.0	2.9	2.8	2.8	2.9	3.0	2.7	3.1	-0.2	[-0.9; 0.4]
Walloon Region	2.5	2.6	3.5	3.2	3.0	3.1	3.3	2.9	3.5	3.8	3.8	3.0	3.5	4.0	3.8	2.3	[1.1; 3.6]

WSR=Age-Standardised Rate, using the World Standard Population (N/100,000 person-years)
 AAPC = Average Annual Percentage Change over the 2006-2020 period

Figure 4: Bladder Cancer: Age-standardised incidence rates (WSR) by incidence year, sex and region



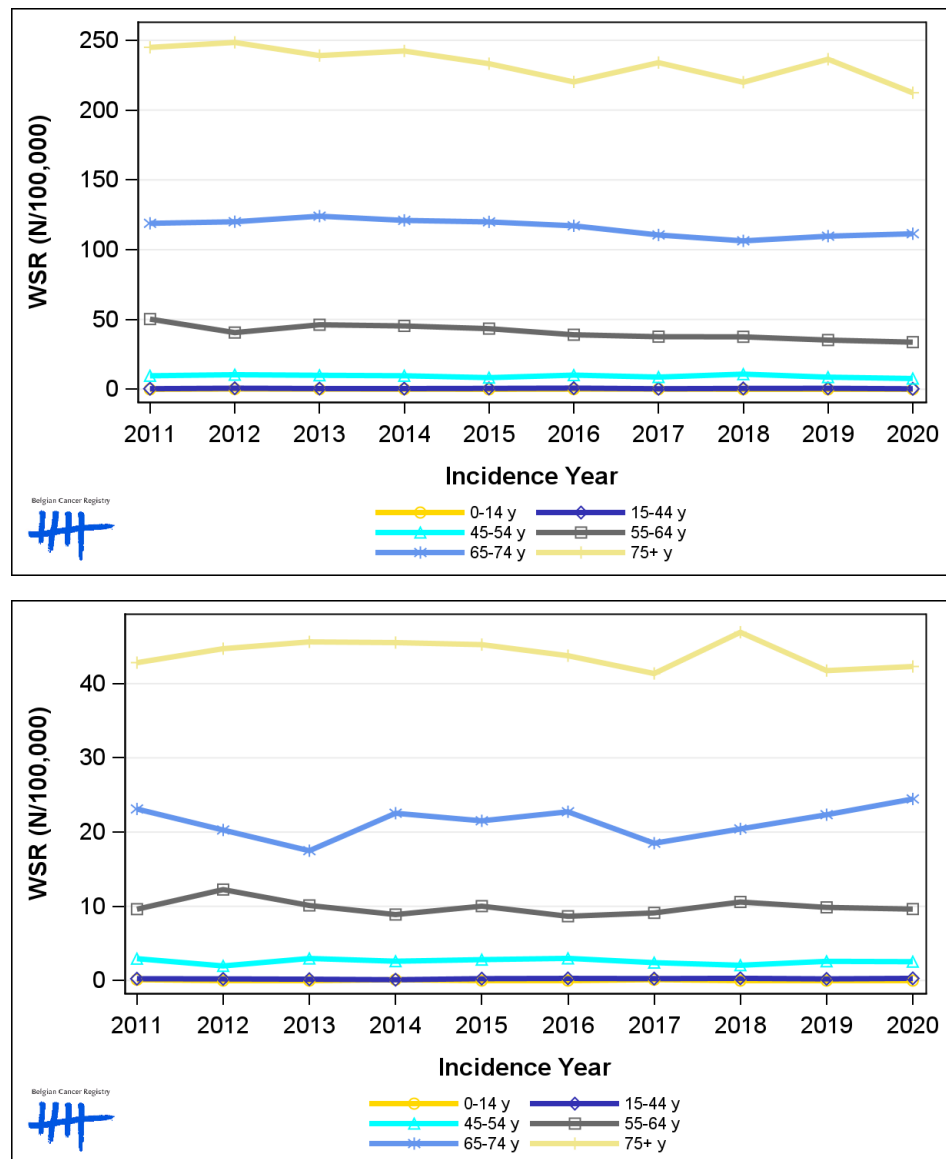
1.5. Incidence by broad age groups

Table 5: Bladder Cancer: Number of new diagnoses and age-standardised incidence rates (WSR) by broad age groups and incidence year by sex, Belgium

	N										WSR									
	2011	2012	2013	2014	2015	2016	2017	2018	2019	2020	2011	2012	2013	2014	2015	2016	2017	2018	2019	2020
Males																				
All ages	1,831	1,852	1,886	1,911	1,885	1,858	1,869	1,853	1,946	1,854	16.1	15.8	16.0	15.8	15.3	14.9	14.4	14.2	14.3	13.5
0-14 y	0	2	1	1	0	1	1	0	0	0	0.0	0.2	0.1	<0.1	0.0	0.1	0.1	0.0	0.0	0.0
15-44 y	11	21	14	13	17	22	10	16	17	9	0.4	0.8	0.5	0.5	0.6	0.8	0.4	0.6	0.7	0.3
45-54 y	80	87	83	82	71	86	73	92	72	63	9.7	10.4	10.0	9.7	8.3	10.1	8.7	10.8	8.7	7.7
55-64 y	333	269	309	306	297	273	267	268	256	250	50.3	40.6	46.2	45.4	43.4	39.0	37.7	37.6	35.2	33.7
65-74 y	527	548	576	576	586	590	582	582	618	634	118.9	120.0	124.0	121.0	119.9	117.1	110.5	106.3	109.7	111.4
75+ y	880	925	903	933	914	886	936	895	983	898	245.0	248.5	239.1	242.4	233.3	220.2	234.0	220.0	236.5	212.4
Females																				
All ages	473	494	481	507	510	507	468	524	514	527	3.3	3.2	3.0	3.1	3.2	3.2	2.9	3.2	3.1	3.3
0-14 y	1	0	0	1	0	0	1	0	0	0	0.1	0.0	0.0	0.1	0.0	0.0	0.1	0.0	0.0	0.0
15-44 y	7	6	5	3	7	7	7	8	6	8	0.3	0.2	0.2	0.1	0.3	0.3	0.3	0.3	0.2	0.3
45-54 y	24	16	25	22	23	25	20	17	20	20	3.0	2.0	3.0	2.6	2.8	3.0	2.4	2.1	2.6	2.5
55-64 y	65	83	69	62	70	62	67	78	73	73	9.6	12.3	10.1	8.9	10.0	8.7	9.1	10.6	9.9	9.6
65-74 y	117	109	90	121	116	126	107	123	137	153	23.1	20.3	17.5	22.5	21.5	22.7	18.5	20.4	22.3	24.5
75+ y	259	280	292	298	294	287	266	298	278	273	42.8	44.7	45.6	45.5	45.3	43.8	41.4	46.9	41.8	42.3

N=Number of invasive tumours
WSR=Age-Standardised Rate, using the World Standard Population (N/100,000 person-years)

Figure 5: Bladder Cancer: Age-standardised incidence rates (WSR) versus incidence year by broad age groups for males (top) and females (bottom), Belgium



2. Relative survival

Table 6: Bladder Cancer: 5-year relative survival proportion by sex, age group and region, Belgium 2016-2020

	5-year relative survival 2016-2020 (%)					
	Males			Females		
	N at risk	estimate	95% CI	N at risk	estimate	95% CI
Overall	9,339	59.1	[57.5, 60.8]	2,530	50.0	[47.1, 52.9]
Age group						
15-59 years	917	71.5	[67.7, 75.0]	279	62.1	[55.2, 68.4]
60-74 years	3,843	64.2	[61.9, 66.4]	852	63.7	[59.3, 67.9]
75+ years	4,580	51.3	[48.3, 54.3]	1,399	37.9	[33.6, 42.4]
Region						
Brussels-Capital Region	662	54.7	[48.6, 60.6]	174	47.9	[36.6, 59.2]
Flemish Region	5,523	60.0	[57.8, 62.1]	1,462	51.5	[47.7, 55.3]
Walloon Region	3,154	58.7	[55.7, 61.6]	894	47.9	[42.9, 52.9]

Figure 6: Bladder Cancer: relative survival proportion by sex, Belgium 2016-2020

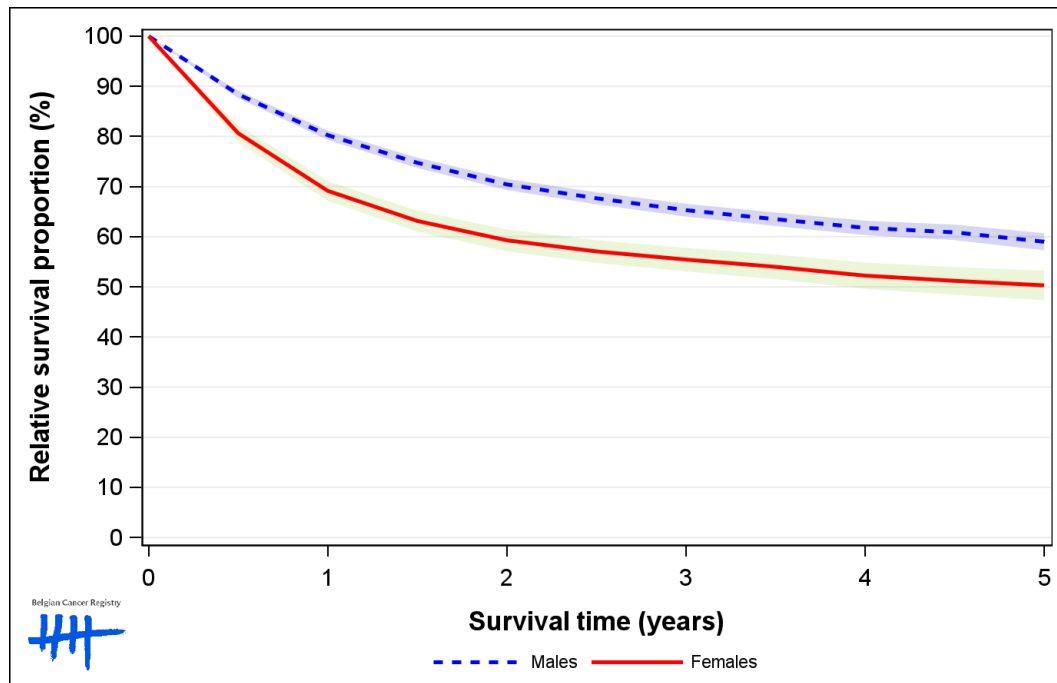


Figure 7: Bladder Cancer: relative survival proportion by age group in males, Belgium 2016-2020

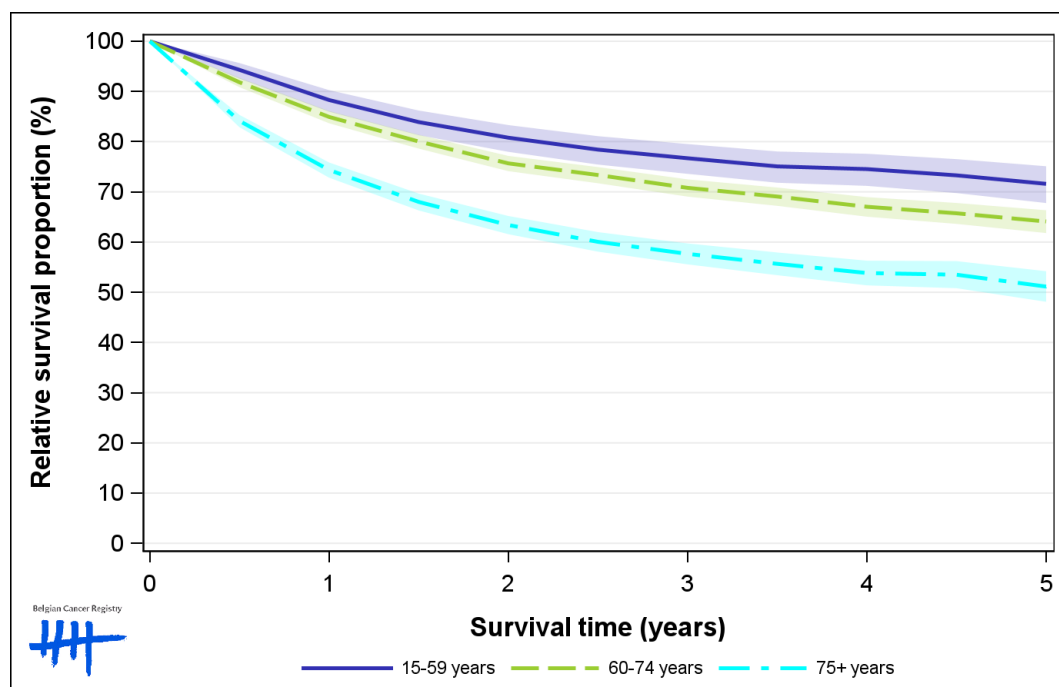


Figure 8: Bladder Cancer: relative survival proportion by age group in females, Belgium 2016-2020

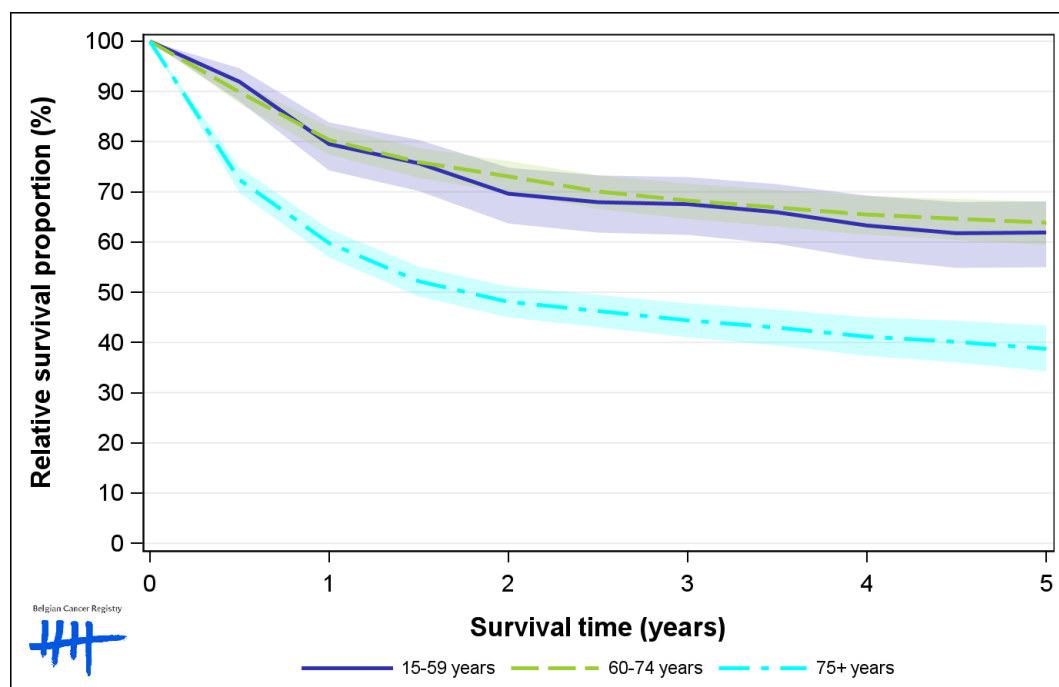


Figure 9: Bladder Cancer: relative survival proportion by region in males, Belgium 2016-2020

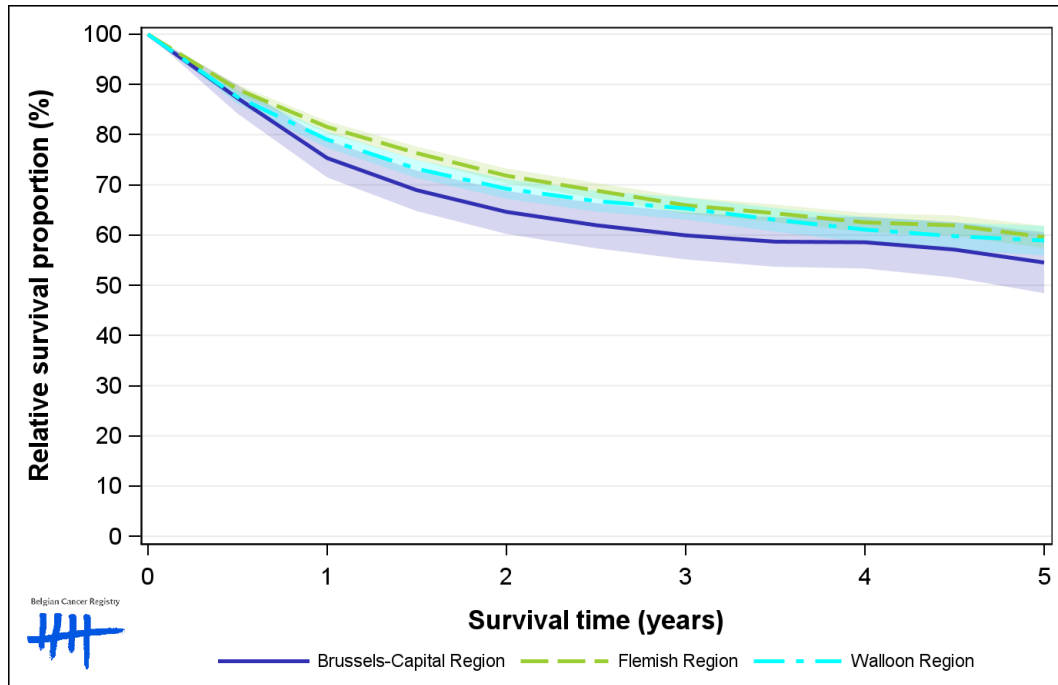


Figure 10: Bladder Cancer: relative survival proportion by region in females, Belgium 2016-2020

