



Belgian Cancer Registry



Cancer Fact Sheet **Thyroid Cancer**

ICD10 : C73

Belgium 2017

1. Cancer Incidence

1.1. Number of new diagnoses and incidence rates

Table 1: Thyroid Cancer: Average age at diagnosis, number of new cancer diagnoses (N), crude rate (CR), age-standardised incidence rates (ESR and WSR) and cumulative risk by sex and region, 2017

Males	Age (years)	N	CR	ESR	WSR	CRi
Belgium	56.1	287	5.2	4.5	3.5	0.38
Brussels-Capital Region	55.5	36	6.2	6.3	4.8	0.56
Flemish Region	56.1	149	4.6	3.9	3.1	0.32
Walloon Region	56.3	102	5.8	5.1	4.0	0.44

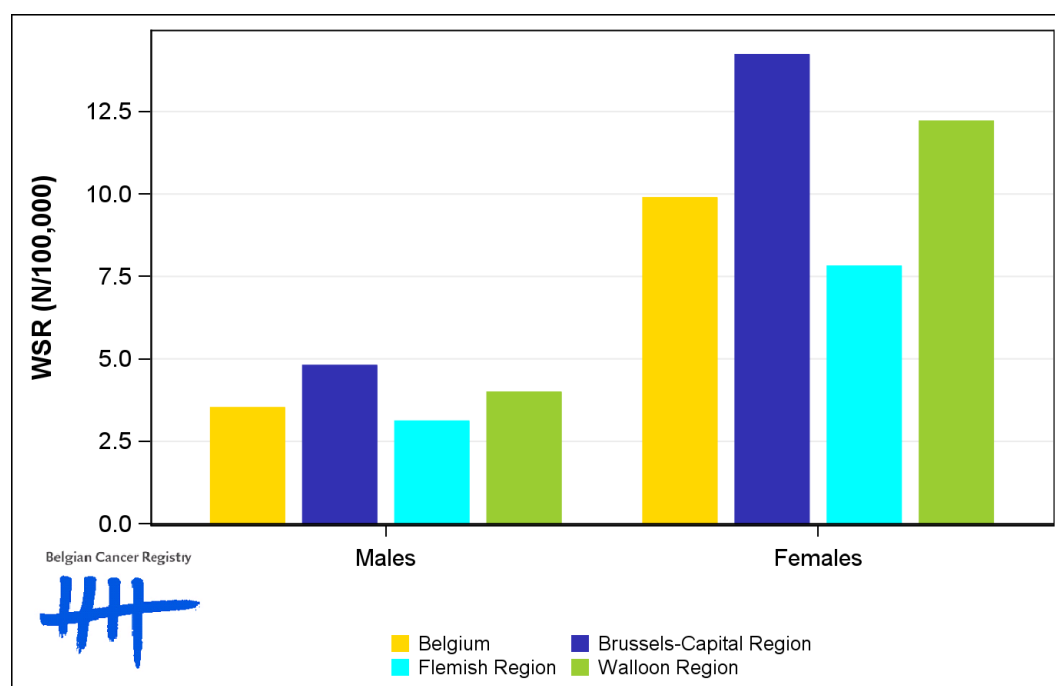
Females	Age (years)	N	CR	ESR	WSR	CRi
Belgium	51.5	751	13.1	12.0	9.9	0.96
Brussels-Capital Region	47.5	109	17.9	17.6	14.2	1.39
Flemish Region	52.2	342	10.4	9.4	7.8	0.74
Walloon Region	52.2	300	16.2	15.0	12.2	1.21

CR=Crude (all ages) Rate (N/100,000 person-years)
 ESR=Age-Standardised Rate, using the European Standard Population (N/100,000 person-years)
 WSR=Age-Standardised Rate, using the World Standard Population (N/100,000 person-years)
 CRi=Cumulative Risk for 0-74 years (%)

Belgian Cancer Registry



Figure 1: Thyroid Cancer: Age-standardised incidence rates by sex and region, 2017



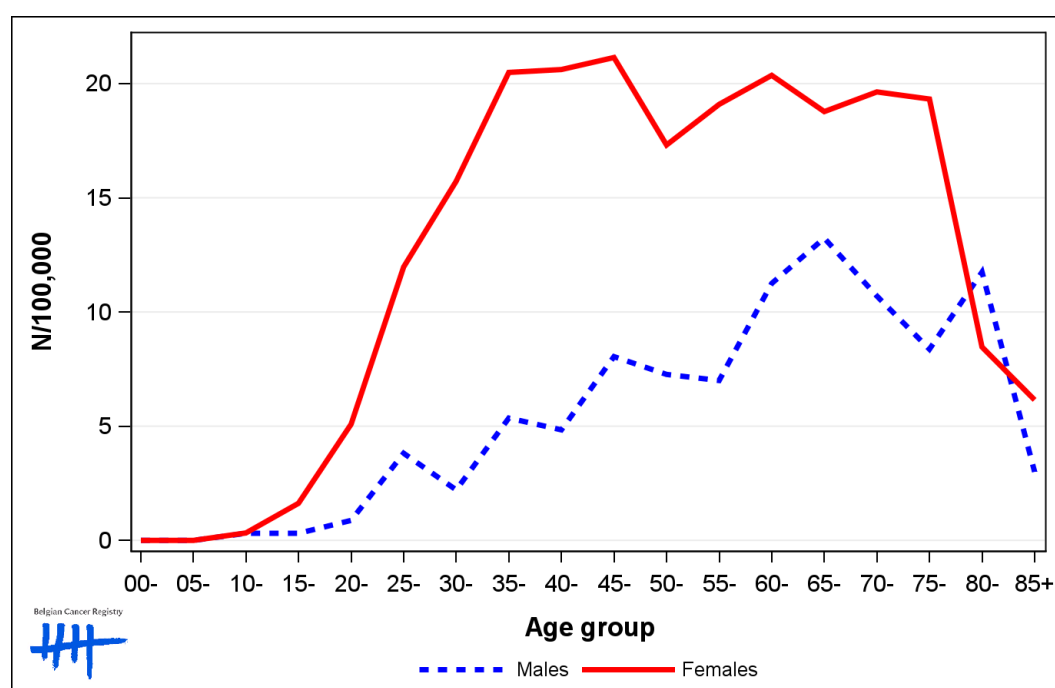
1.2. Age-specific incidence rates

Table 2: Thyroid Cancer: Age-specific incidence rates, crude rate (CR) and age-standardised incidence rates (ESR and WSR) by sex, Belgium 2017

	00-	05-	10-	15-	20-	25-	30-	35-	40-	45-	50-	55-	60-	65-	70-	75-	80-	85+	CR	ESR	WSR
Males	0.0	0.0	0.3	0.3	0.9	3.8	2.2	5.4	4.8	8.0	7.3	7.0	11.3	13.2	10.7	8.4	11.7	3.0	5.2	4.5	3.5
Females	0.0	0.0	0.3	1.6	5.1	12.0	15.7	20.5	20.6	21.1	17.3	19.1	20.4	18.8	19.6	19.3	8.5	6.2	13.1	12.0	9.9

CR=Crude (all ages) Rate (N/100,000 person-years)
 ESR=Age-Standardised Rate, using the European Standard Population (N/100,000 person-years)
 WSR=Age-Standardised Rate, using the World Standard Population (N/100,000 person-years)

Figure 2: Thyroid Cancer: Age-specific incidence rates by sex, 2017



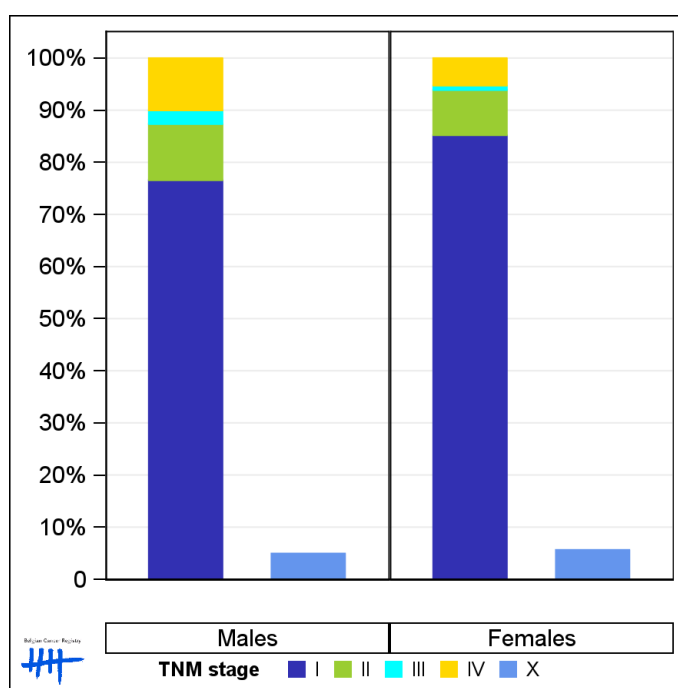
1.3. Combined stage

Table 3: Thyroid Cancer: Distribution of combined stage by sex, Belgium 2017

	Stage I	Stage II	Stage III	Stage IV	Stage X	Stage NA	Total
Males							
N	206	29	7	27	14	4	287
%	71.8	10.1	2.4	9.4	4.9	1.4	100
Females							
N	599	61	6	37	42	6	751
%	79.8	8.1	0.8	4.9	5.6	0.8	100

Staging according to the TNM 8th edition (Ref: Brierley JD, Gospodarowicz MK, Wittekind Ch. TNM classification of malignant tumours, UICC 8th edition)
 Combined TNM stage : compilation of pathological (pTNM) and clinical (cTNM) stage. pTNM prevails over cTNM, except when cTNM stage is IV
 Stage X: diagnoses with an unknown stage
 Stage NA: diagnoses with a histological diagnosis where no stage can be evaluated (Not Applicable)

Figure 3: Thyroid Cancer: Bar chart of known combined stage by sex, Belgium 2017



1.4. Trends in incidence

Table 4: Thyroid Cancer: Age-standardised incidence rates (WSR) and average annual percentage change (AAPC) by incidence year, sex and region

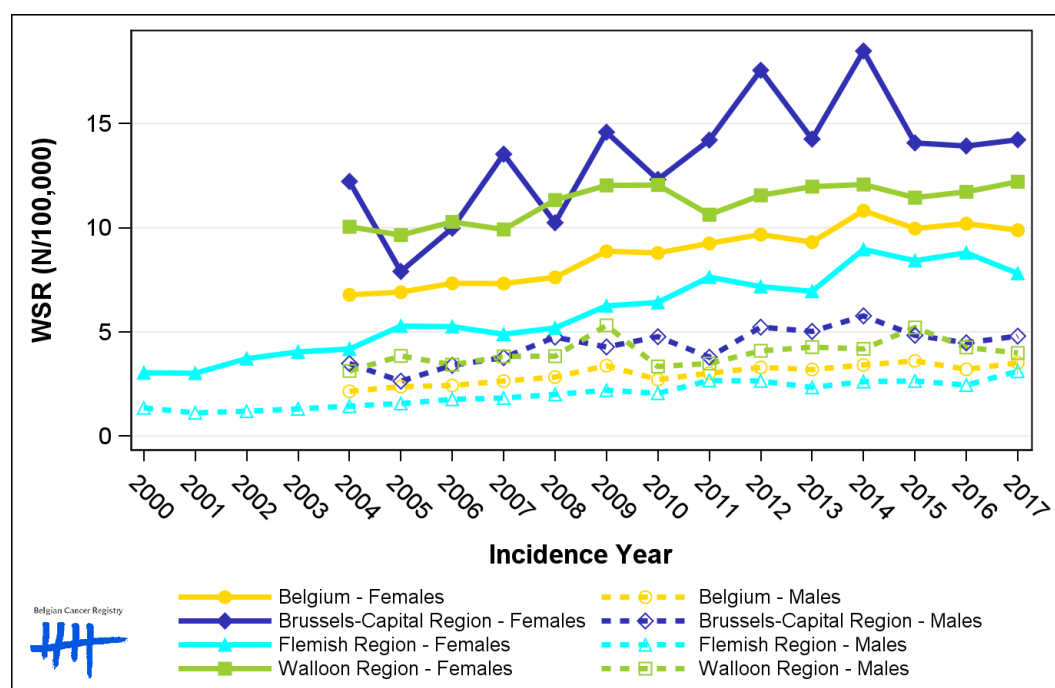
Males	2003	2004	2005	2006	2007	2008	2009	2010	2011	2012	2013	2014	2015	2016	2017	AAPC	95% CI
Belgium		2.2	2.4	2.4	2.6	2.8	3.4	2.7	3.0	3.3	3.2	3.4	3.6	3.2	3.5	3.7	[2.8; 4.7]
Brussels-Capital Region		3.5	2.6	3.4	3.8	4.8	4.3	4.8	3.8	5.2	5.0	5.8	4.8	4.5	4.8	4.1	[2.1; 6.1]
Flemish Region	1.3	1.4	1.6	1.8	1.8	2.0	2.2	2.1	2.7	2.6	2.3	2.6	2.6	2.4	3.1	5.6	[4.6; 6.6]
Walloon Region		3.1	3.8	3.4	3.8	3.8	5.3	3.3	3.5	4.1	4.3	4.2	5.2	4.3	4.0	1.9	[-0.1; 3.9]

Females	2003	2004	2005	2006	2007	2008	2009	2010	2011	2012	2013	2014	2015	2016	2017	AAPC	95% CI
Belgium		6.8	6.9	7.3	7.3	7.6	8.9	8.8	9.3	9.7	9.3	10.8	10.0	10.2	9.9	3.4	[2.8; 4.0]
Brussels-Capital Region		12.2	7.9	10.0	13.5	10.2	14.6	12.3	14.2	17.6	14.3	18.5	14.1	13.9	14.2	3.5	[1.0; 6.2]
Flemish Region	4.0	4.2	5.3	5.3	4.9	5.2	6.3	6.4	7.6	7.2	7.0	9.0	8.4	8.8	7.8	5.7	[4.4; 6.9]
Walloon Region		10.0	9.6	10.3	9.9	11.3	12.0	12.1	10.6	11.6	12.0	12.1	11.4	11.7	12.2	1.6	[0.9; 2.3]

WSR=Age-Standardised Rate, using the World Standard Population (N/100,000 person-years)

AAPC = Average Annual Percentage Change over the 2004-2017 period (except for the Flemish region : 2003-2017).

Figure 4: Thyroid Cancer: Age-standardised incidence rates (WSR) by incidence year, sex and region



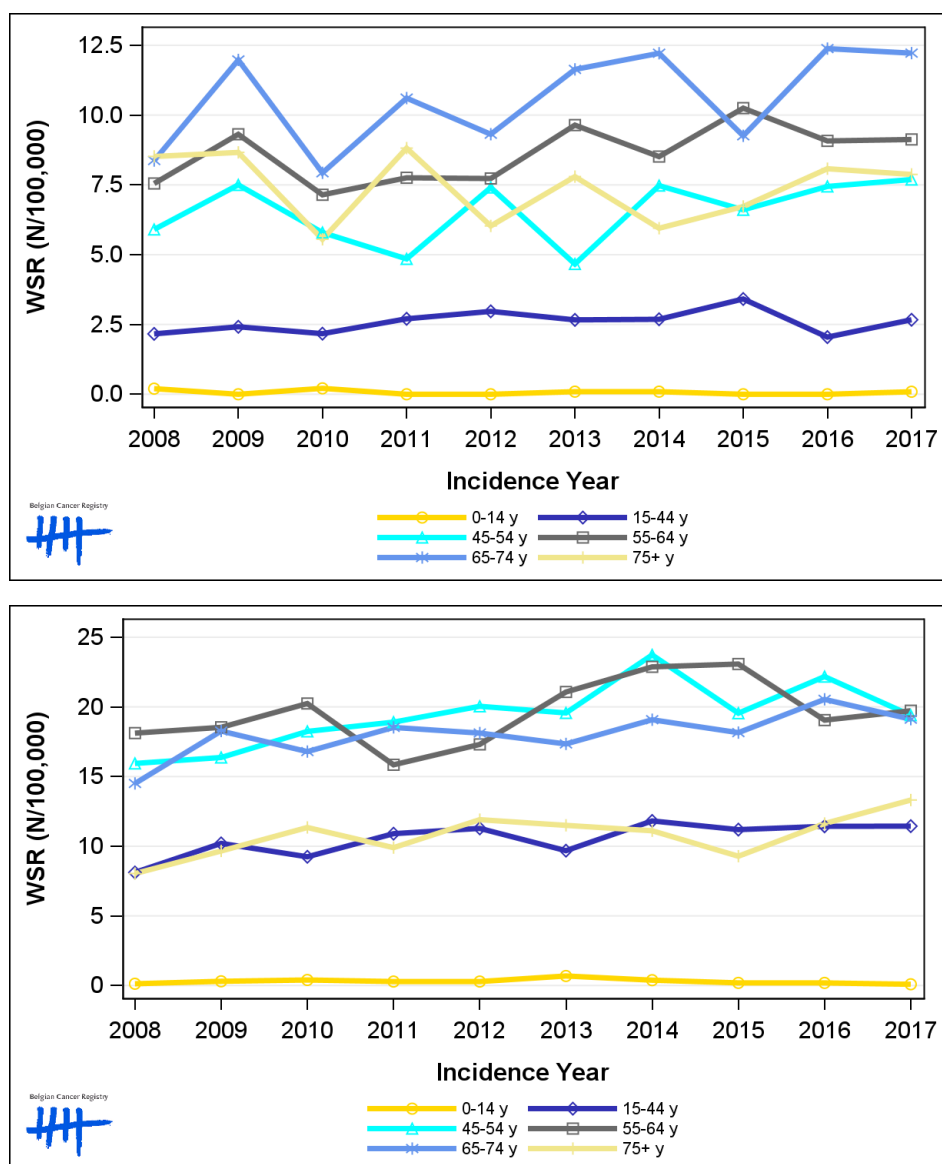
1.5. Incidence by broad age groups

Table 5: Thyroid Cancer: Number of new diagnoses and age-standardised incidence rates (WSR) by broad age groups and incidence year by sex, Belgium

	N										WSR									
	2008	2009	2010	2011	2012	2013	2014	2015	2016	2017	2008	2009	2010	2011	2012	2013	2014	2015	2016	2017
Males																				
All ages	212	258	204	241	251	250	264	281	265	287	2.8	3.4	2.7	3.0	3.3	3.2	3.4	3.6	3.2	3.5
0-14 y	2	0	2	0	0	1	1	0	0	1	0.2	0.0	0.2	0.0	0.0	<0.1	<0.1	0.0	0.0	<0.1
15-44 y	53	58	54	70	72	64	63	83	48	64	2.2	2.4	2.2	2.7	3.0	2.7	2.7	3.4	2.0	2.7
45-54 y	46	60	46	39	62	38	62	55	60	62	5.9	7.5	5.8	4.8	7.4	4.7	7.5	6.6	7.4	7.7
55-64 y	47	60	47	52	52	65	58	71	64	65	7.5	9.3	7.1	7.8	7.7	9.6	8.5	10.2	9.1	9.1
65-74 y	34	49	34	46	42	54	58	45	62	63	8.4	12.0	7.9	10.6	9.3	11.6	12.2	9.3	12.4	12.2
75+ y	30	31	21	34	23	28	22	27	31	32	8.5	8.7	5.6	8.8	6.0	7.8	5.9	6.7	8.1	7.9
Females																				
All ages	549	633	651	668	706	688	802	740	776	751	7.6	8.9	8.8	9.3	9.7	9.3	10.8	10.0	10.2	9.9
0-14 y	1	3	4	3	3	7	4	2	2	1	0.1	0.3	0.4	0.3	0.3	0.7	0.4	0.2	0.2	<0.1
15-44 y	196	240	218	258	265	227	284	265	276	274	8.1	10.2	9.2	10.9	11.3	9.7	11.8	11.2	11.4	11.4
45-54 y	122	127	145	151	160	156	189	156	177	152	15.9	16.4	18.2	18.9	20.0	19.6	23.7	19.6	22.2	19.4
55-64 y	115	121	136	109	120	147	161	166	139	145	18.1	18.5	20.2	15.8	17.3	21.1	22.9	23.1	19.1	19.7
65-74 y	72	88	80	91	91	88	100	97	113	109	14.5	18.3	16.8	18.5	18.1	17.3	19.1	18.2	20.5	19.1
75+ y	43	54	68	56	67	63	64	54	69	70	8.0	9.7	11.3	9.9	11.9	11.5	11.1	9.3	11.6	13.3

N=Number of invasive tumours
WSR=Age-Standardised Rate, using the World Standard Population (N/100,000 person-years)

Figure 5: Thyroid Cancer: Age-standardised incidence rates (WSR) versus incidence year by broad age groups for males (top) and females (bottom), Belgium



2. Relative survival

Table 6: Thyroid Cancer: 5-year relative survival proportion by sex, age group and region, Belgium 2013-2017

	5-year relative survival 2013-2017 (%)					
	Males			Females		
	N at risk	estimate	95% CI	N at risk	estimate	95% CI
Overall	1,333	92.2	[89.6, 94.6]	3,713	96.4	[95.4, 97.5]
Age group						
15-59 years	735	98.6	[96.8, 99.8]	2,557	99.3	[98.7, 99.8]
60-74 years	461	88.4	[83.0, 93.1]	838	94.2	[91.1, 96.7]
75+ years	137	64.7	[48.0, 81.1]	318	77.2	[67.9, 85.9]
Region						
Brussels-Capital Region	172	95.8	[88.2, 100.5]	553	98.7	[95.8, 100.7]
Flemish Region	619	86.9	[82.4, 90.8]	1,754	94.4	[92.7, 96.0]
Walloon Region	542	96.9	[93.3, 99.8]	1,406	98.1	[96.4, 99.5]

Figure 6: Thyroid Cancer: relative survival proportion by sex, Belgium 2013-2017

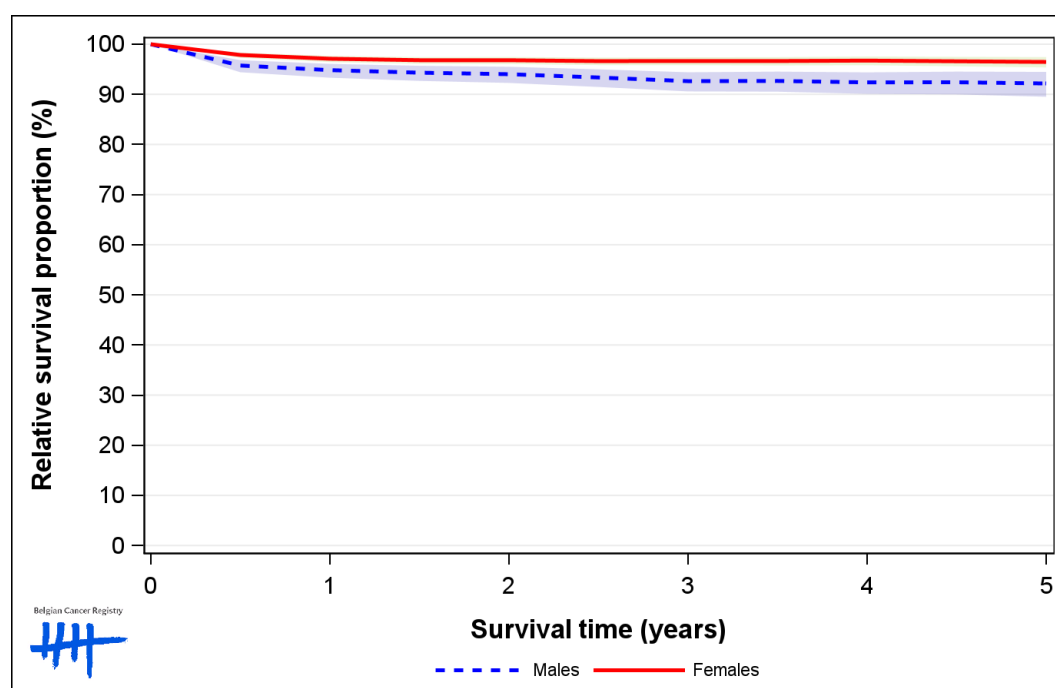


Figure 7: Thyroid Cancer: relative survival proportion by age group in males, Belgium 2013-2017

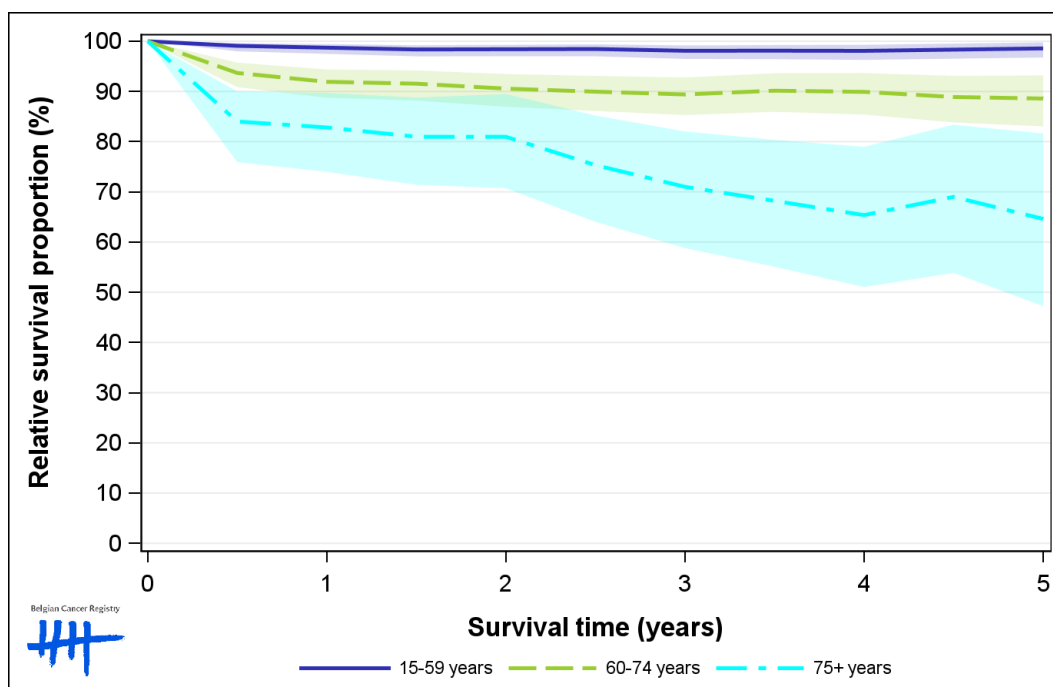


Figure 8: Thyroid Cancer: relative survival proportion by age group in females, Belgium 2013-2017

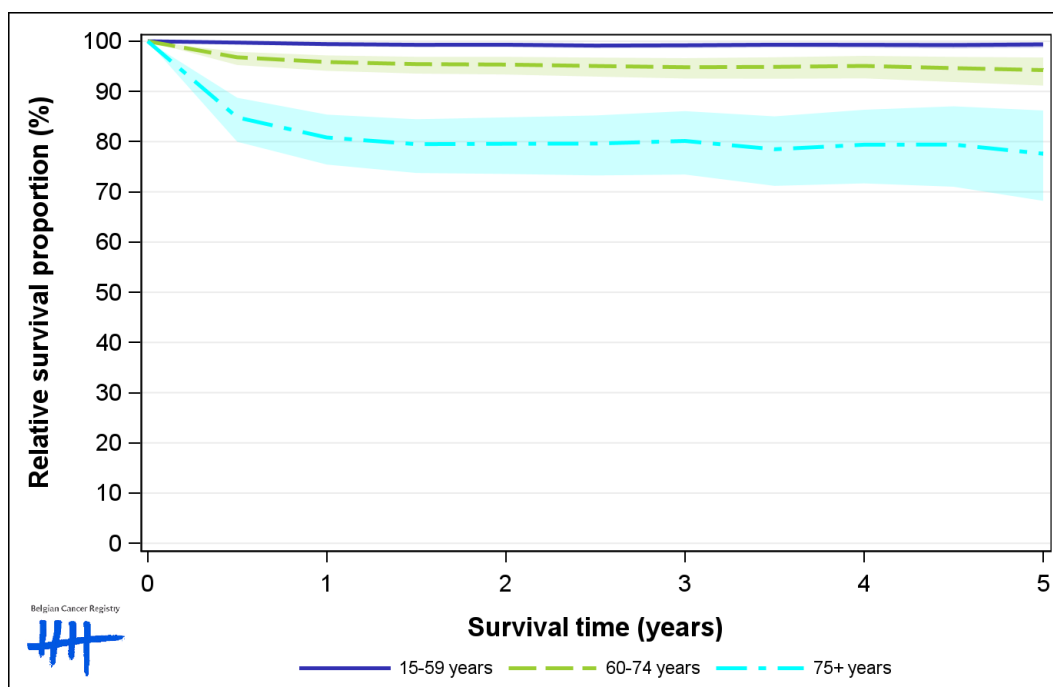


Figure 9: Thyroid Cancer: relative survival proportion by region in males, Belgium 2013-2017

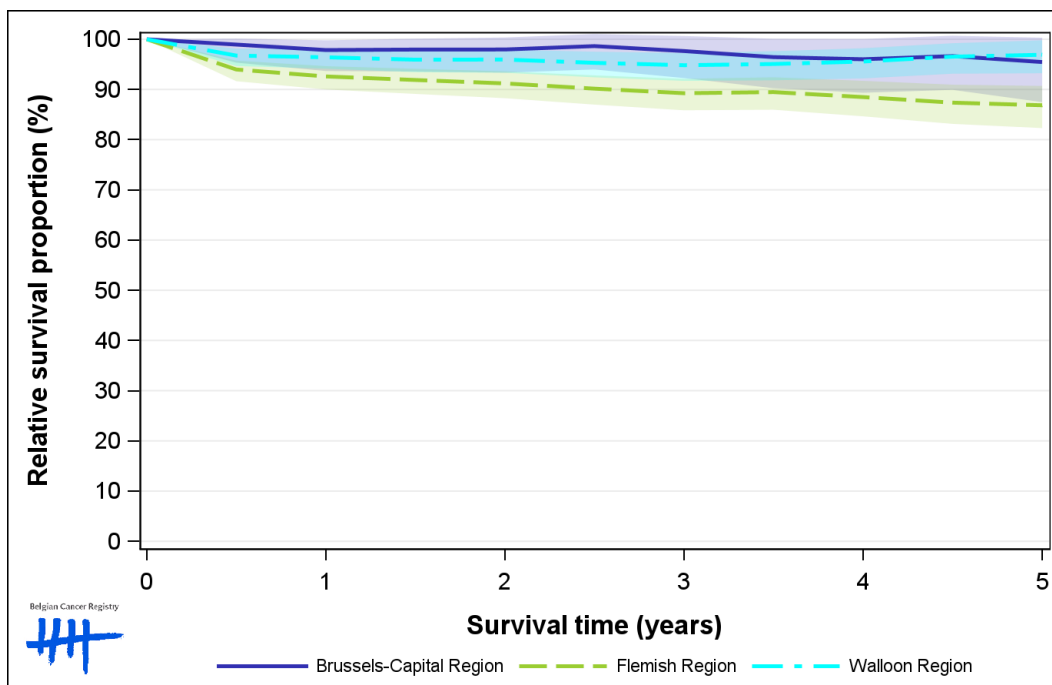


Figure 10: Thyroid Cancer: relative survival proportion by region in females, Belgium 2013-2017

