

Belgian Cancer Registry



Cancer Fact Sheet **Stomach Cancer**

ICD10 : C16.1-16.9

Belgium 2017

1. Cancer Incidence

1.1. Number of new diagnoses and incidence rates

Table 1: Stomach Cancer: Average age at diagnosis, number of new cancer diagnoses (N), crude rate (CR), age-standardised incidence rates (ESR and WSR) and cumulative risk by sex and region, 2017

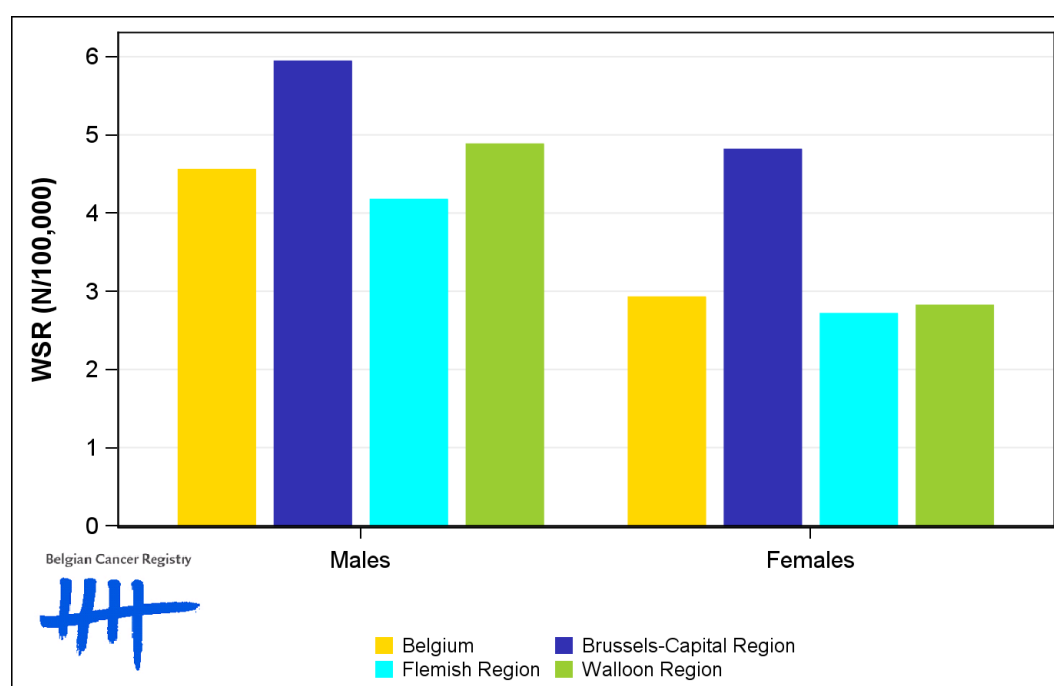
Males	Age (years)	N	CR	ESR	WSR	CRi
Belgium	70.3	536	9.6	6.9	4.6	0.48
Brussels-Capital Region	62.7	47	8.1	8.4	5.9	0.76
Flemish Region	72.1	321	10.0	6.5	4.2	0.40
Walloon Region	68.9	168	9.5	7.3	4.9	0.55

Females	Age (years)	N	CR	ESR	WSR	CRi
Belgium	70.7	396	6.9	4.3	2.9	0.34
Brussels-Capital Region	67.3	47	7.7	6.8	4.8	0.59
Flemish Region	72.1	233	7.1	4.0	2.7	0.30
Walloon Region	69.4	116	6.3	4.1	2.8	0.34

CR=Crude (all ages) Rate (N/100,000 person-years)
 ESR=Age-Standardised Rate, using the European Standard Population (N/100,000 person-years)
 WSR=Age-Standardised Rate, using the World Standard Population (N/100,000 person-years)
 CRi=Cumulative Risk for 0-74 years (%)



Figure 1: Stomach Cancer: Age-standardised incidence rates by sex and region, 2017



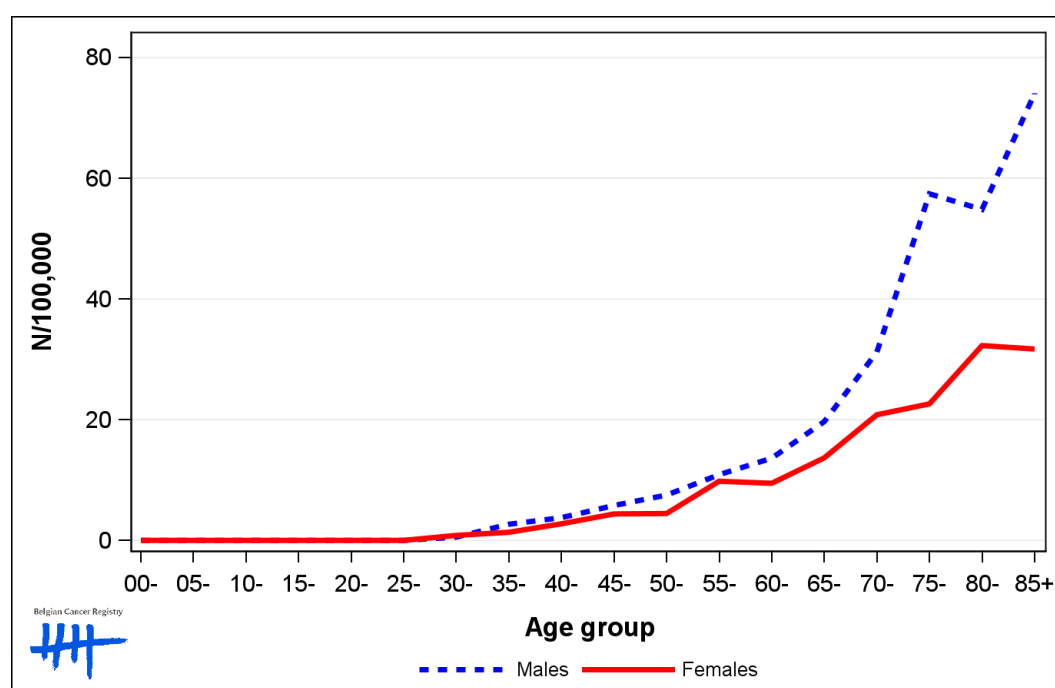
1.2. Age-specific incidence rates

Table 2: Stomach Cancer: Age-specific incidence rates, crude rate (CR) and age-standardised incidence rates (ESR and WSR) by sex, Belgium 2017

	00-	05-	10-	15-	20-	25-	30-	35-	40-	45-	50-	55-	60-	65-	70-	75-	80-	85+	CR	ESR	WSR
Males	0.0	0.0	0.0	0.0	0.0	0.0	0.6	2.7	3.8	5.8	7.5	10.9	13.6	19.7	31.2	57.4	54.8	74.1	9.6	6.9	4.6
Females	0.0	0.0	0.0	0.0	0.0	0.0	0.8	1.3	2.7	4.4	4.5	9.8	9.5	13.7	20.8	22.6	32.3	31.7	6.9	4.3	2.9

CR=Crude (all ages) Rate (N/100,000 person-years)
 ESR=Age-Standardised Rate, using the European Standard Population (N/100,000 person-years)
 WSR=Age-Standardised Rate, using the World Standard Population (N/100,000 person-years)

Figure 2: Stomach Cancer: Age-specific incidence rates by sex, 2017



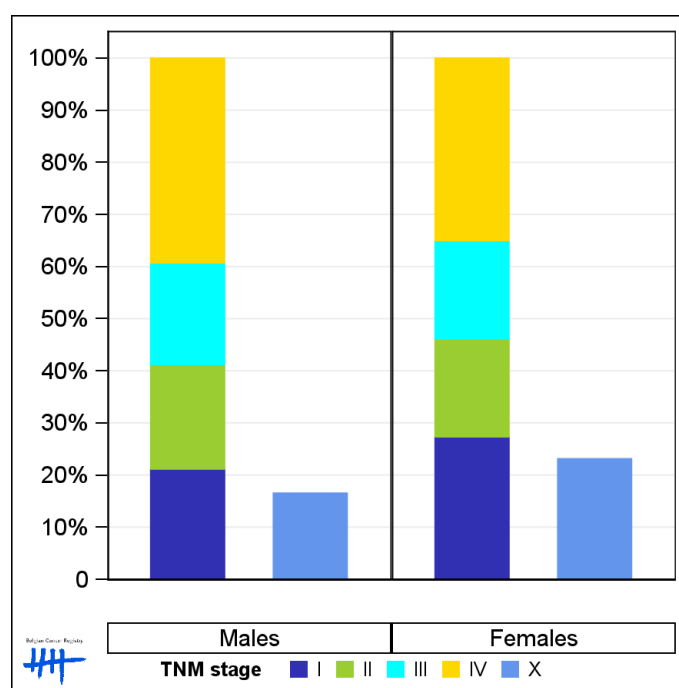
1.3. Combined stage

Table 3: Stomach Cancer: Distribution of combined stage by sex, Belgium 2017

	Stage I	Stage II	Stage III	Stage IV	Stage X	Stage NA	Total
Males							
N	75	71	69	139	70	112	536
%	14.0	13.2	12.9	25.9	13.1	20.9	100
Females							
N	61	42	42	78	67	106	396
%	15.4	10.6	10.6	19.7	16.9	26.8	100

Staging according to the TNM 8th edition (Ref: Brierley JD, Gospodarowicz MK, Wittekind Ch. TNM classification of malignant tumours, UICC 8th edition)
 Combined TNM stage : compilation of pathological (pTNM) and clinical (cTNM) stage. pTNM prevails over cTNM, except when cTNM stage is IV
 Stage X: diagnoses with an unknown stage
 Stage NA: diagnoses with a histological diagnosis where no stage can be evaluated (Not Applicable)

Figure 3: Stomach Cancer: Bar chart of known combined stage by sex, Belgium 2017



1.4. Trends in incidence

Table 4: Stomach Cancer: Age-standardised incidence rates (WSR) and average annual percentage change (AAPC) by incidence year, sex and region

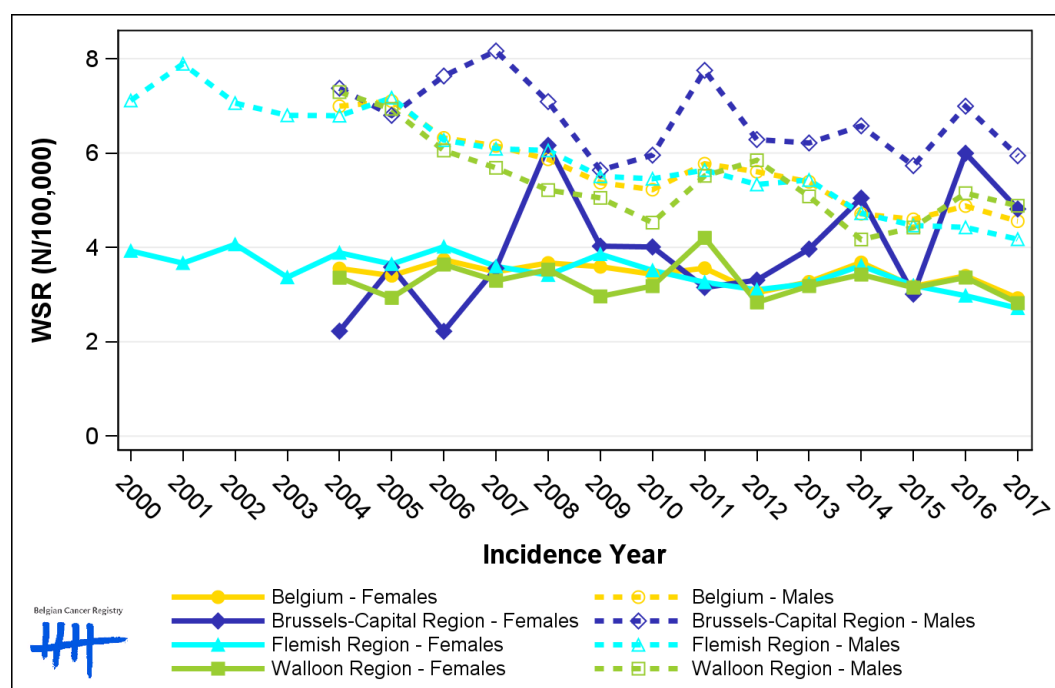
Males	2003	2004	2005	2006	2007	2008	2009	2010	2011	2012	2013	2014	2015	2016	2017	AAPC	95% CI
Belgium		7.0	7.1	6.3	6.2	5.9	5.4	5.2	5.8	5.6	5.4	4.7	4.6	4.9	4.6	-3.2	[-3.9; -2.4]
Brussels-Capital Region		7.4	6.8	7.6	8.2	7.1	5.6	6.0	7.8	6.3	6.2	6.6	5.7	7.0	5.9	-1.5	[-2.9; 0.1]
Flemish Region	6.8	6.8	7.2	6.3	6.1	6.1	5.5	5.5	5.6	5.3	5.4	4.7	4.5	4.4	4.2	-3.5	[-4.1; -3.0]
Walloon Region		7.3	6.9	6.1	5.7	5.2	5.0	4.5	5.5	5.8	5.1	4.2	4.4	5.1	4.9	-2.9	[-4.6; -1.0]

Females	2003	2004	2005	2006	2007	2008	2009	2010	2011	2012	2013	2014	2015	2016	2017	AAPC	95% CI
Belgium		3.6	3.4	3.7	3.5	3.7	3.6	3.4	3.6	3.0	3.3	3.7	3.2	3.4	2.9	-1.0	[-1.9; -0.1]
Brussels-Capital Region		2.2	3.6	2.2	3.6	6.2	4.0	4.0	3.2	3.3	4.0	5.0	3.0	6.0	4.8	4.0	[-0.1; 8.2]
Flemish Region	3.4	3.9	3.6	4.0	3.6	3.4	3.9	3.5	3.3	3.1	3.2	3.6	3.2	3.0	2.7	-1.7	[-2.7; -0.8]
Walloon Region		3.4	2.9	3.6	3.3	3.5	3.0	3.2	4.2	2.8	3.2	3.4	3.1	3.4	2.8	-0.5	[-2.0; 1.1]

WSR=Age-Standardised Rate, using the World Standard Population (N/100,000 person-years)

AAPC = Average Annual Percentage Change over the 2004-2017 period (except for the Flemish region : 2003-2017).

Figure 4: Stomach Cancer: Age-standardised incidence rates (WSR) by incidence year, sex and region



1.5. Incidence by broad age groups

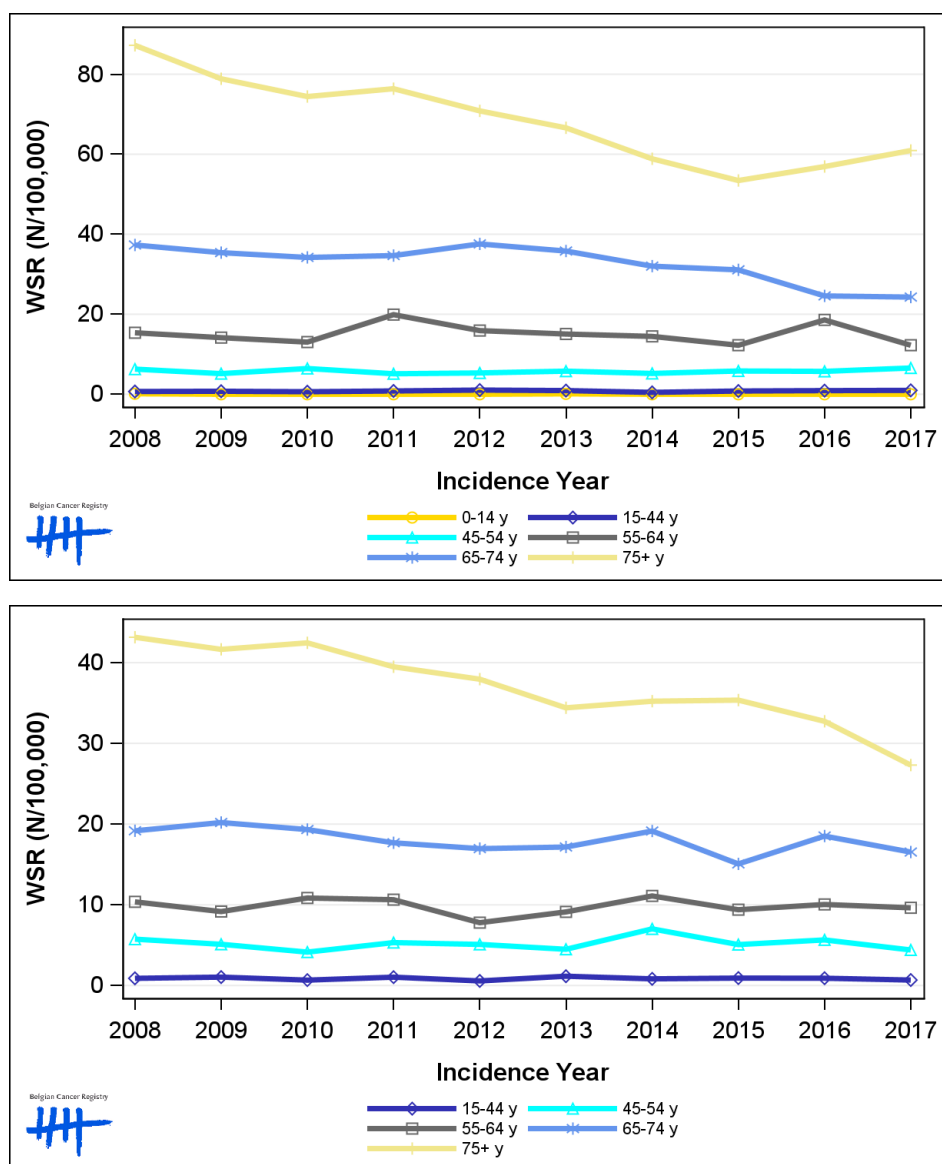
Table 5: Stomach Cancer: Number of new diagnoses and age-standardised incidence rates (WSR) by broad age groups and incidence year by sex, Belgium

	N											WSR									
	2008	2009	2010	2011	2012	2013	2014	2015	2016	2017	2008	2009	2010	2011	2012	2013	2014	2015	2016	2017	
Males																					
All ages	610	573	563	630	611	589	535	521	555	536	5.9	5.4	5.2	5.8	5.6	5.4	4.7	4.6	4.9	4.6	
0-14 y	1	0	0	0	0	1	0	0	0	0	0.1	0.0	0.0	0.0	0.0	0.1	0.0	0.0	0.0	0.0	
15-44 y	19	21	16	22	27	23	12	21	23	26	0.7	0.8	0.6	0.8	1.0	0.9	0.5	0.8	0.9	1.0	
45-54 y	49	41	51	43	44	48	44	49	47	54	6.3	5.2	6.4	5.1	5.3	5.8	5.2	5.8	5.7	6.6	
55-64 y	94	90	85	132	106	102	98	85	131	88	15.4	14.2	13.0	19.9	15.9	15.1	14.5	12.3	18.6	12.3	
65-74 y	162	155	150	157	173	167	152	152	124	128	37.3	35.4	34.2	34.7	37.6	35.8	32.0	31.1	24.6	24.3	
75+ y	285	266	261	276	261	248	229	214	230	240	87.2	78.9	74.4	76.4	70.8	66.6	58.9	53.4	56.9	60.9	
Females																					
All ages	481	477	476	476	440	442	475	431	455	396	3.7	3.6	3.4	3.6	3.0	3.3	3.7	3.2	3.4	2.9	
0-14 y	0	0	0	0	0	0	0	0	0	0	0.0	0.0	0.0	0.0	0.0	0.0	0.0	0.0	0.0	0.0	
15-44 y	23	27	16	27	15	30	21	24	23	18	0.9	1.1	0.7	1.0	0.6	1.2	0.8	0.9	0.9	0.7	
45-54 y	45	40	33	43	42	37	56	40	44	35	5.8	5.1	4.1	5.3	5.1	4.5	7.0	5.1	5.7	4.4	
55-64 y	66	59	72	72	53	63	77	66	72	71	10.4	9.2	10.8	10.6	7.8	9.1	11.1	9.4	10.0	9.6	
65-74 y	96	102	93	90	86	91	102	81	103	96	19.2	20.2	19.3	17.7	17.0	17.2	19.1	15.1	18.5	16.5	
75+ y	251	249	262	244	244	221	219	220	213	176	43.1	41.6	42.5	39.5	38.0	34.4	35.2	35.4	32.7	27.3	

N=Number of invasive tumours

WSR=Age-Standardised Rate, using the World Standard Population (N/100,000 person-years)

Figure 5: Stomach Cancer: Age-standardised incidence rates (WSR) versus incidence year by broad age groups for males (top) and females (bottom), Belgium



2. Relative survival

Table 6: Stomach Cancer: 5-year relative survival proportion by sex, age group and region, Belgium 2013-2017

	5-year relative survival 2013-2017 (%)					
	Males			Females		
	N at risk	estimate	95% CI	N at risk	estimate	95% CI
Overall	2,707	40.8	[38.3, 43.4]	2,172	47.6	[44.9, 50.4]
Age group						
15-59 years	569	50.3	[45.2, 55.3]	472	61.8	[56.5, 66.7]
60-74 years	988	48.3	[44.4, 52.2]	658	56.8	[52.1, 61.3]
75+ years	1,150	28.4	[24.4, 32.7]	1,042	34.2	[30.0, 38.7]
Region						
Brussels-Capital Region	252	33.7	[26.2, 41.6]	221	52.5	[44.3, 60.5]
Flemish Region	1,677	36.6	[33.6, 39.8]	1,297	46.4	[42.9, 50.1]
Walloon Region	778	52.5	[47.6, 57.5]	654	48.5	[43.6, 53.5]

Figure 6: Stomach Cancer: relative survival proportion by sex, Belgium 2013-2017

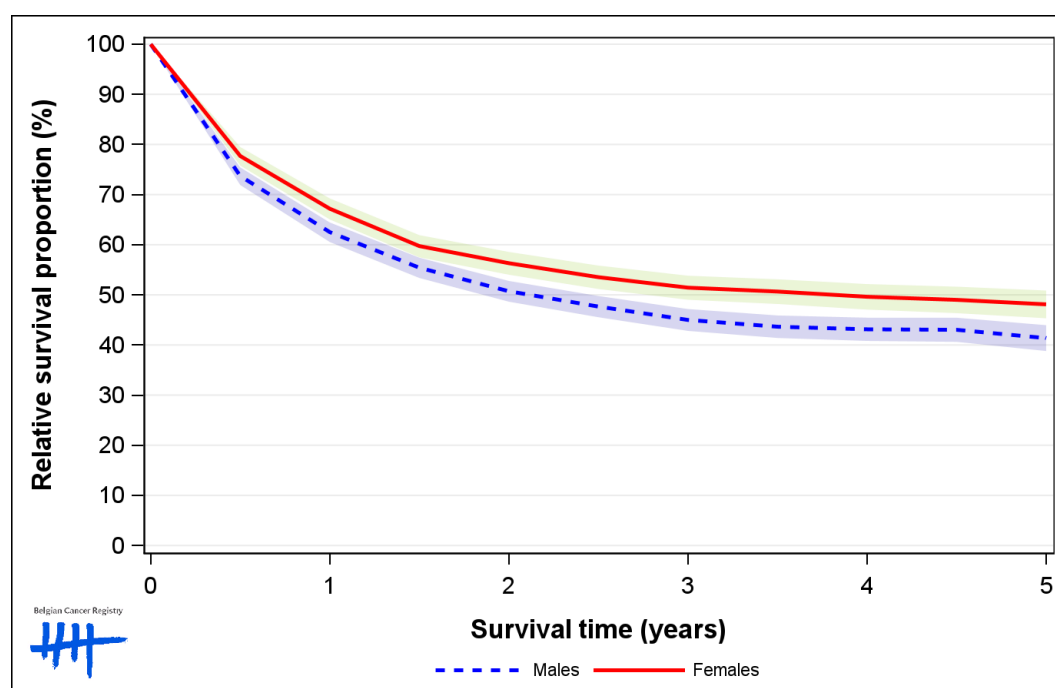


Figure 7: Stomach Cancer: relative survival proportion by age group in males, Belgium 2013-2017

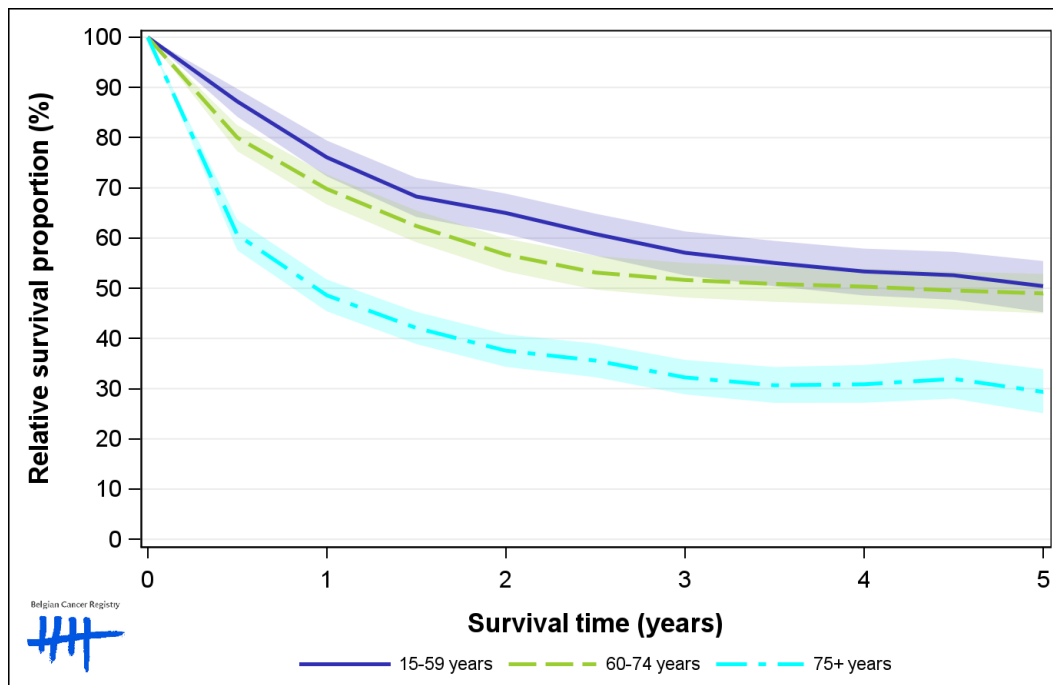


Figure 8: Stomach Cancer: relative survival proportion by age group in females, Belgium 2013-2017

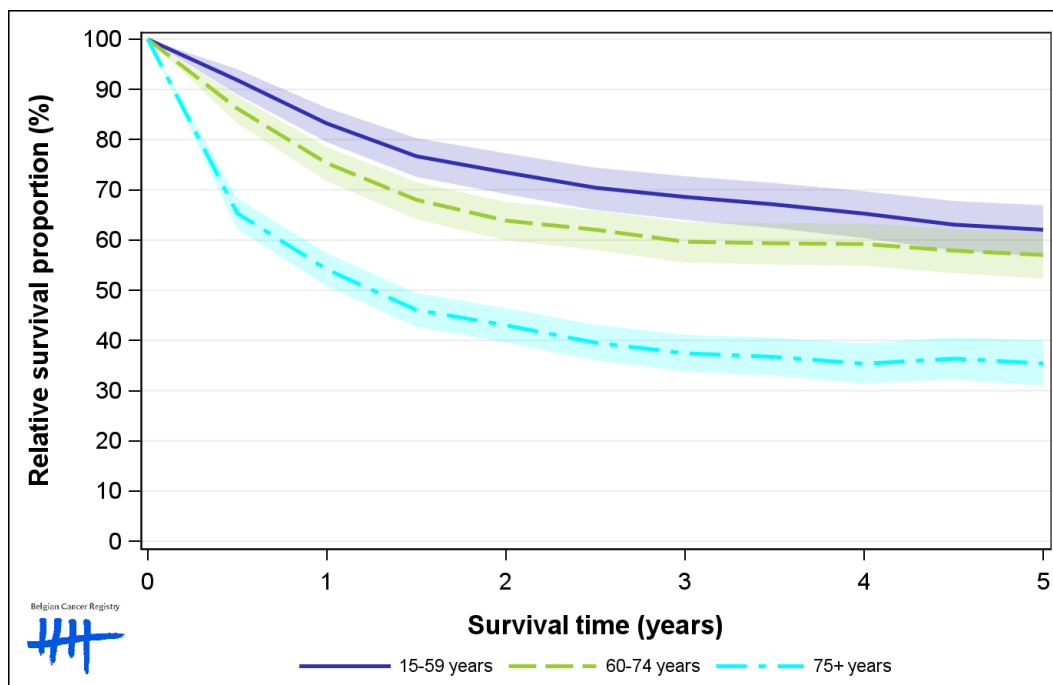


Figure 9: Stomach Cancer: relative survival proportion by region in males, Belgium 2013-2017

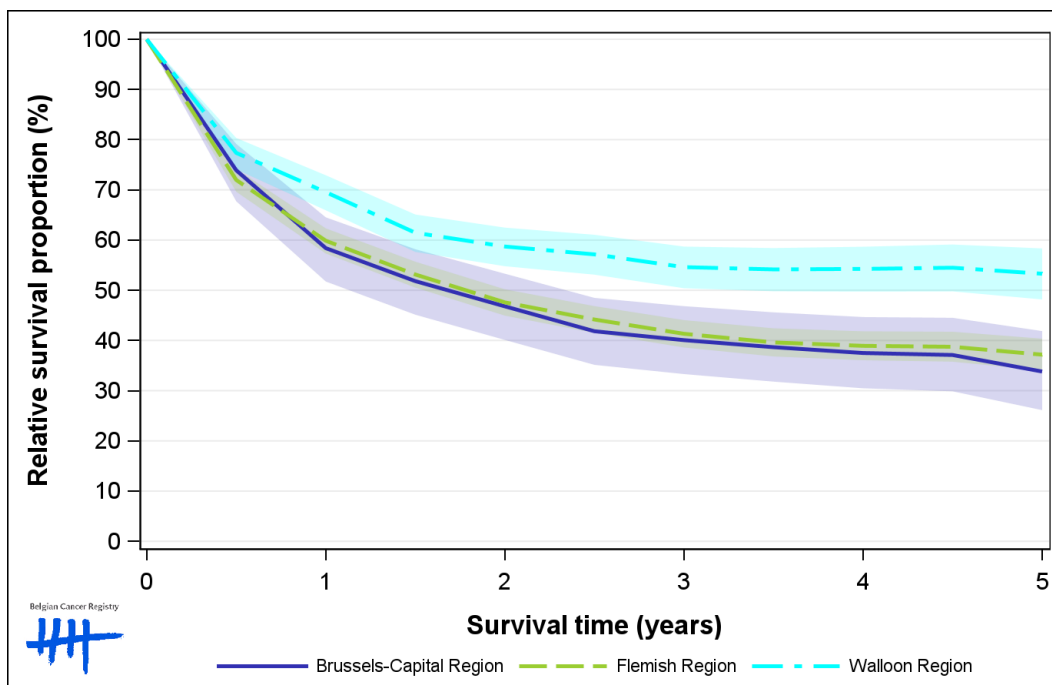


Figure 10: Stomach Cancer: relative survival proportion by region in females, Belgium 2013-2017

