



Belgian Cancer Registry



Cancer Fact Sheet **Ovarian Cancer**

ICD10 : C56

**Belgium 2017**

# 1. Cancer Incidence

## 1.1. Number of new diagnoses and incidence rates

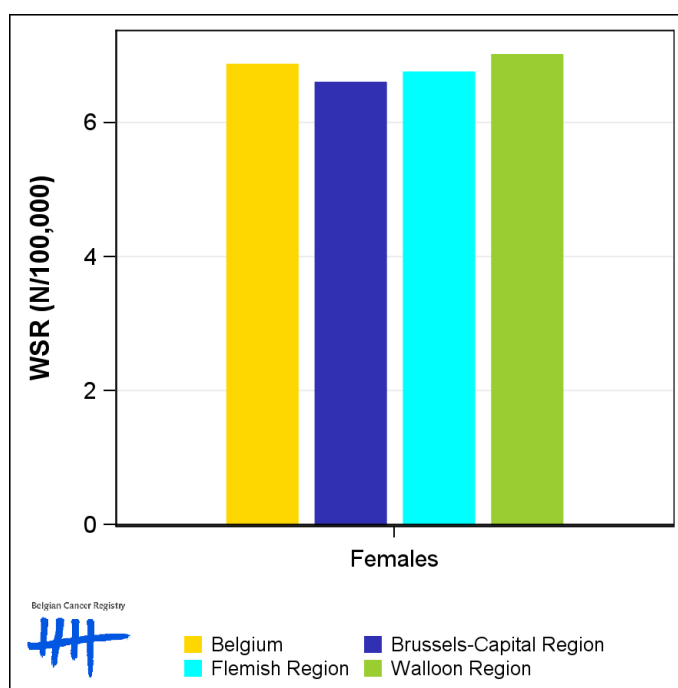
**Table 1:** Ovarian Cancer: Average age at diagnosis, number of new cancer diagnoses (N), crude rate (CR), age-standardised incidence rates (ESR and WSR) and cumulative risk by region, 2017

Females	Age (years)	N	CR	ESR	WSR	CRi
<b>Belgium</b>	<b>66.7</b>	<b>784</b>	<b>13.6</b>	<b>9.6</b>	<b>6.9</b>	<b>0.82</b>
Brussels-Capital Region	62.1	61	10.0	9.2	6.6	0.74
Flemish Region	68.0	480	14.6	9.6	6.8	0.81
Walloon Region	65.4	243	13.1	9.6	7.0	0.84

CR=Crude (all ages) Rate (N/100,000 person-years)  
 ESR=Age-Standardised Rate, using the European Standard Population (N/100,000 person-years)  
 WSR=Age-Standardised Rate, using the World Standard Population (N/100,000 person-years)  
 CRi=Cumulative Risk for 0-74 years (%)



**Figure 1:** Ovarian Cancer: Age-standardised incidence rates by region, 2017



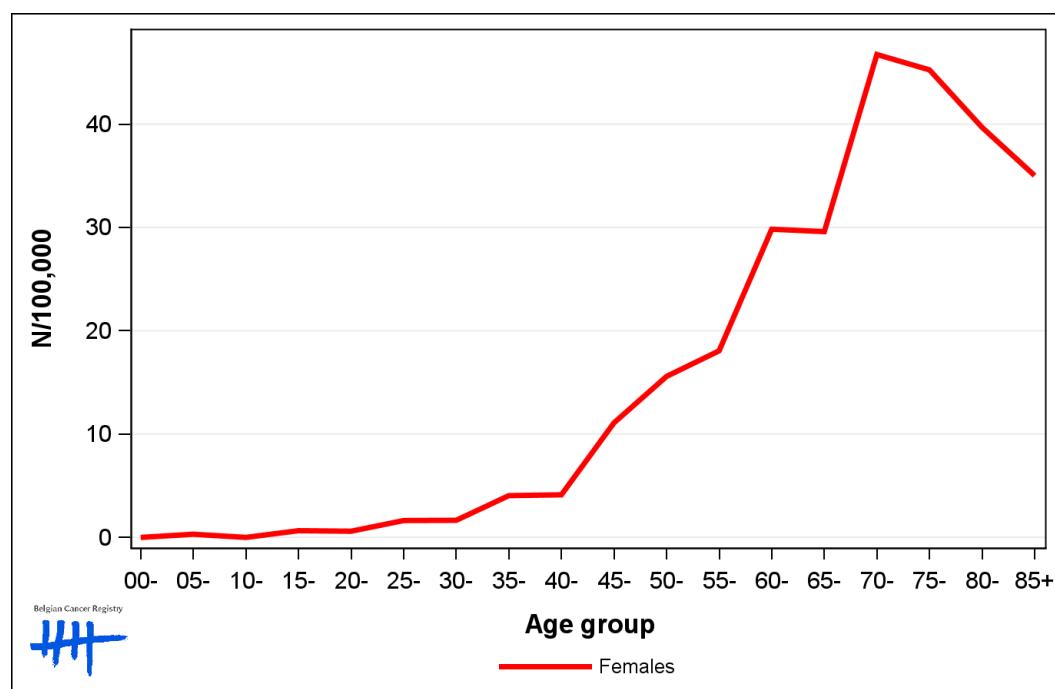
## 1.2. Age-specific incidence rates

**Table 2:** Ovarian Cancer: Age-specific incidence rates, crude rate (CR) and age-standardised incidence rates (ESR and WSR), Belgium 2017

	00-	05-	10-	15-	20-	25-	30-	35-	40-	45-	50-	55-	60-	65-	70-	75-	80-	85+	CR	ESR	WSR
Females	0.0	0.3	0.0	0.6	0.6	1.6	1.7	4.0	4.1	11.1	15.6	18.1	29.8	29.6	46.7	45.2	39.7	35.0	13.6	9.6	6.9

CR=Crude (all ages) Rate (N/100,000 person-years)  
 ESR=Age-Standardised Rate, using the European Standard Population (N/100,000 person-years)  
 WSR=Age-Standardised Rate, using the World Standard Population (N/100,000 person-years)

**Figure 2:** Ovarian Cancer: Age-specific incidence rates, 2017



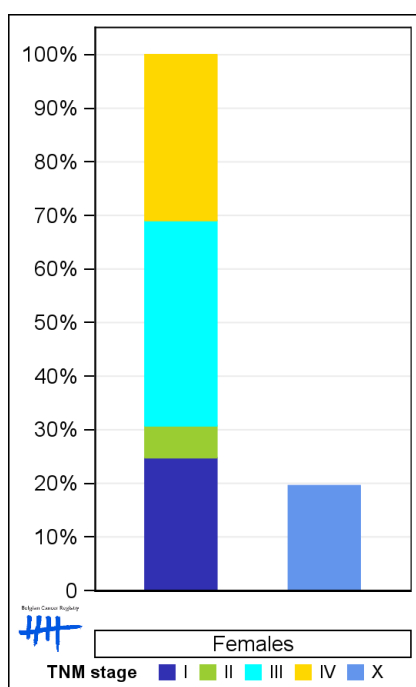
### 1.3. Combined stage

**Table 3:** Ovarian Cancer: Distribution of combined stage, Belgium 2017

	Stage I	Stage II	Stage III	Stage IV	Stage X	Stage NA	Total
<b>Females</b>							
N	154	37	238	192	151	12	784
%	19.6	4.7	30.4	24.5	19.3	1.5	100

Staging according to the TNM 8th edition (Ref: Brierley JD, Gospodarowicz MK, Wittekind Ch. TNM classification of malignant tumours, UICC 8th edition)  
 Combined TNM stage : compilation of pathological (pTNM) and clinical (cTNM) stage. pTNM prevails over cTNM, except when cTNM stage is IV  
 Stage X: diagnoses with an unknown stage  
 Stage NA: diagnoses with a histological diagnosis where no stage can be evaluated (Not Applicable)

**Figure 3:** Ovarian Cancer: Bar chart of known combined stage, Belgium 2017



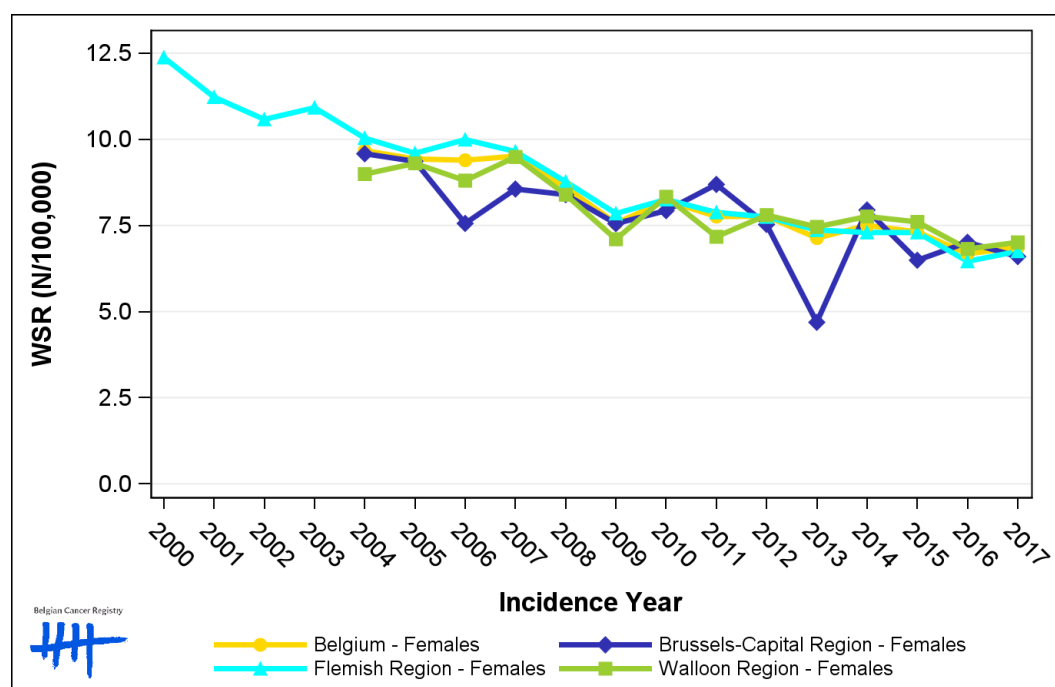
## 1.4. Trends in incidence

**Table 4:** Ovarian Cancer: Age-standardised incidence rates (WSR) and average annual percentage change (AAPC) by incidence year and region

Females	2003	2004	2005	2006	2007	2008	2009	2010	2011	2012	2013	2014	2015	2016	2017	AAPC	95% CI
<b>Belgium</b>		<b>9.7</b>	<b>9.4</b>	<b>9.4</b>	<b>9.5</b>	<b>8.6</b>	<b>7.6</b>	<b>8.2</b>	<b>7.8</b>	<b>7.8</b>	<b>7.1</b>	<b>7.5</b>	<b>7.3</b>	<b>6.7</b>	<b>6.9</b>	<b>-2.8</b>	<b>[-3.4; -2.2]</b>
Brussels-Capital Region		9.6	9.4	7.6	8.6	8.4	7.6	7.9	8.7	7.5	4.7	7.9	6.5	7.0	6.6	-2.8	[-4.8; -0.7]
Flemish Region	10.9	10.0	9.6	10.0	9.6	8.8	7.8	8.3	7.9	7.7	7.4	7.3	7.3	6.5	6.8	-3.4	[-3.9; -2.9]
Walloon Region		9.0	9.3	8.8	9.5	8.4	7.1	8.3	7.2	7.8	7.5	7.8	7.6	6.8	7.0	-2.1	[-3.0; -1.2]

WSR=Age-Standardised Rate, using the World Standard Population (N/100,000 person-years)  
 AAPC = Average Annual Percentage Change over the 2004-2017 period (except for the Flemish region : 2003-2017).

**Figure 4:** Ovarian Cancer: Age-standardised incidence rates (WSR) by incidence year and region



## 1.5. Incidence by broad age groups

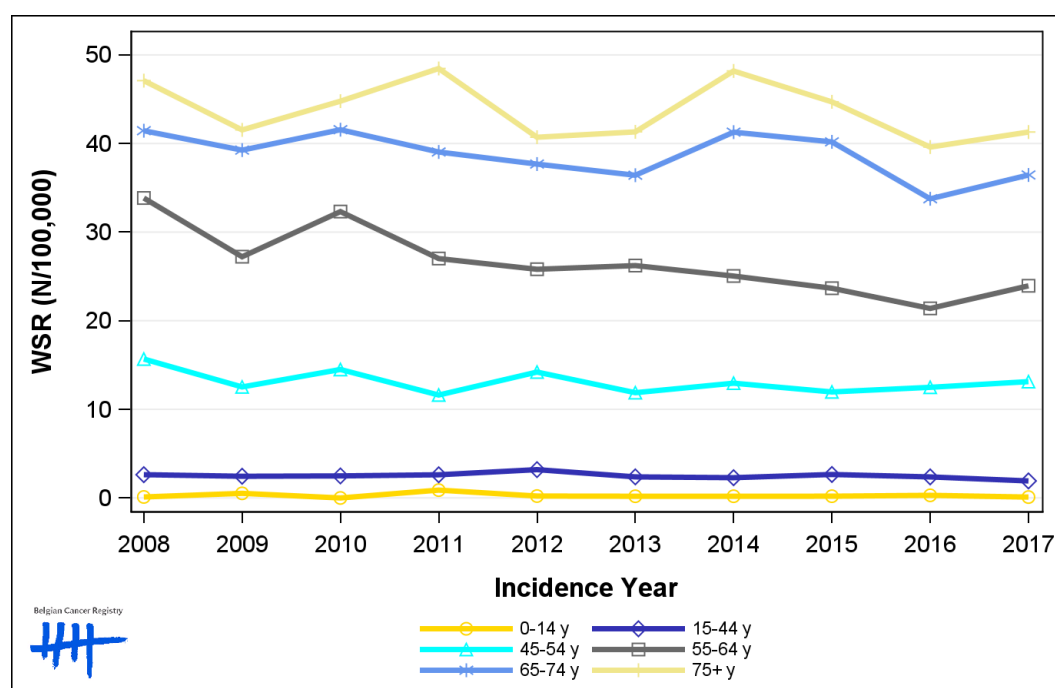
**Table 5:** Ovarian Cancer: Number of new diagnoses and age-standardised incidence rates (WSR) by broad age groups and incidence year, Belgium

	N										WSR									
	2008	2009	2010	2011	2012	2013	2014	2015	2016	2017	2008	2009	2010	2011	2012	2013	2014	2015	2016	2017
<b>Females</b>																				
All ages	875	781	859	822	797	772	841	813	738	784	8.6	7.6	8.2	7.8	7.8	7.1	7.5	7.3	6.7	6.9
0-14 y	1	5	0	9	2	2	2	2	3	1	0.1	0.5	0.0	0.9	0.2	0.2	0.2	0.2	0.3	<0.1
15-44 y	63	62	59	61	71	58	54	61	55	46	2.6	2.4	2.5	2.6	3.2	2.4	2.3	2.6	2.4	1.9
45-54 y	121	99	117	94	116	98	104	98	101	106	15.7	12.5	14.5	11.6	14.2	11.9	13.0	12.0	12.5	13.1
55-64 y	215	176	214	183	177	181	175	167	155	174	33.9	27.2	32.3	27.0	25.8	26.2	25.1	23.7	21.4	23.9
65-74 y	209	197	207	195	191	189	218	217	187	212	41.4	39.3	41.6	39.0	37.7	36.4	41.3	40.2	33.8	36.5
75+ y	266	242	262	280	240	244	288	268	237	245	47.1	41.5	44.8	48.5	40.7	41.3	48.2	44.7	39.6	41.3

N=Number of invasive tumours

WSR=Age-Standardised Rate, using the World Standard Population (N/100,000 person-years)

**Figure 5:** Ovarian Cancer: Age-standardised incidence rates (WSR) versus incidence year by broad age groups, Belgium



Belgian Cancer Registry

Legend:  
 0-14 y (yellow circle)  
 15-44 y (dark blue diamond)  
 45-54 y (cyan triangle)  
 55-64 y (grey square)  
 65-74 y (light blue asterisk)  
 75+ y (yellow plus)

## 2. Relative survival

**Table 6:** Ovarian Cancer: 5-year relative survival proportion by age group and region, Belgium 2013-2017

	5-year relative survival 2013-2017 (%)		
	Females		
	N at risk	estimate	95% CI
<b>Overall</b>	3,911	45.0	[42.9, 47.1]
<b>Age group</b>			
15-44 years	270	76.8	[69.9, 82.4]
45-69 years	1,862	53.7	[50.7, 56.7]
70+ years	1,779	29.5	[26.5, 32.7]
<b>Region</b>			
Brussels-Capital Region	303	51.1	[42.9, 59.0]
Flemish Region	2,344	45.6	[42.9, 48.3]
Walloon Region	1,264	42.4	[38.8, 46.1]

**Figure 6:** Ovarian Cancer: relative survival proportion, Belgium 2013-2017

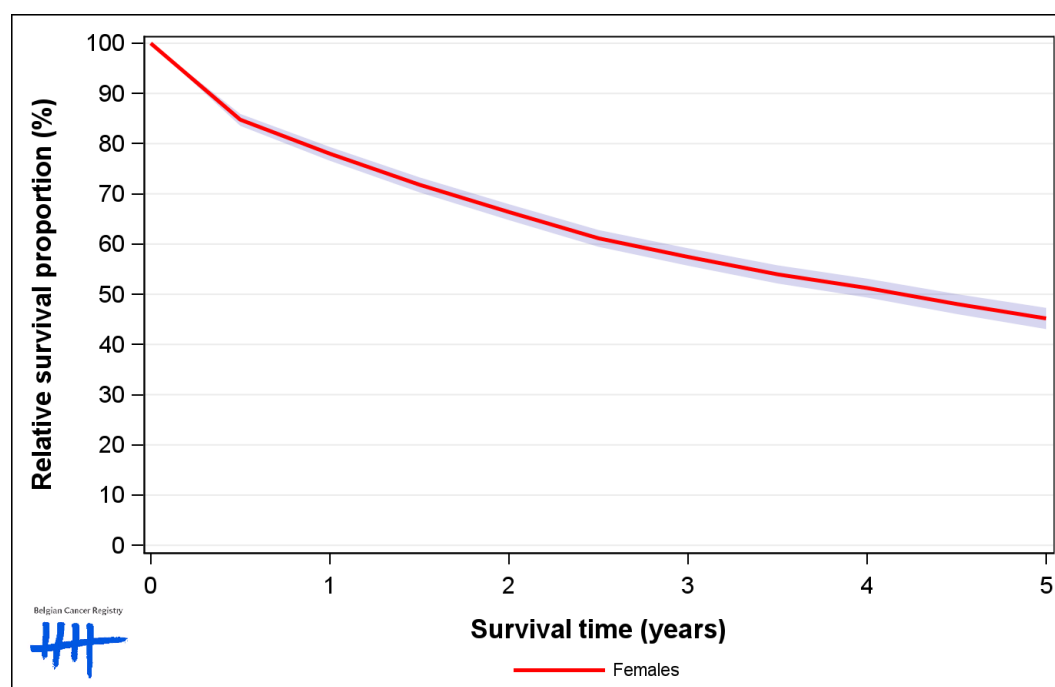


Figure 7: Ovarian Cancer: relative survival proportion by age group, Belgium 2013-2017

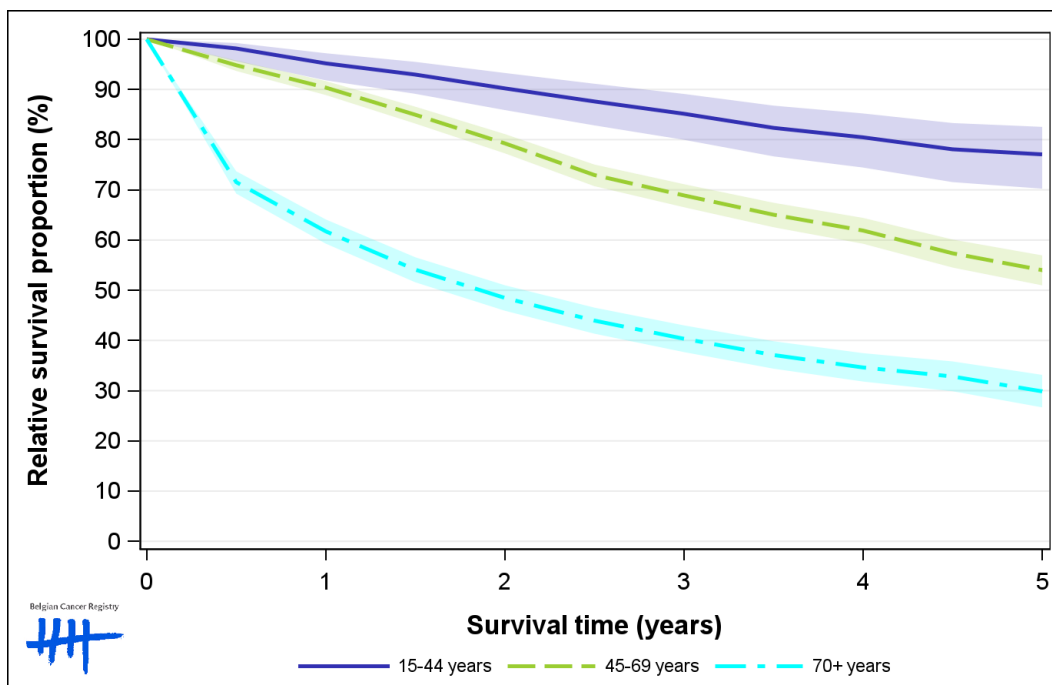


Figure 8: Ovarian Cancer: relative survival proportion by region, Belgium 2013-2017

