

Belgian Cancer Registry



Cancer Fact Sheet **Oesophagus Cancer**

ICD10 : C15-16.0

Belgium 2017

1. Cancer Incidence

1.1. Number of new diagnoses and incidence rates

Table 1: Oesophageal cancer: Average age at diagnosis, number of new cancer diagnoses (N), crude rate (CR), age-standardised incidence rates (ESR and WSR) and cumulative risk by sex and region, 2017

Males	Age (years)	N	CR	ESR	WSR	CRi
Belgium	68.3	1,148	20.6	15.4	10.5	1.32
Brussels-Capital Region	66.8	82	14.1	15.1	10.3	1.34
Flemish Region	69.3	677	21.0	14.4	9.8	1.21
Walloon Region	66.7	389	22.0	17.3	12.0	1.53

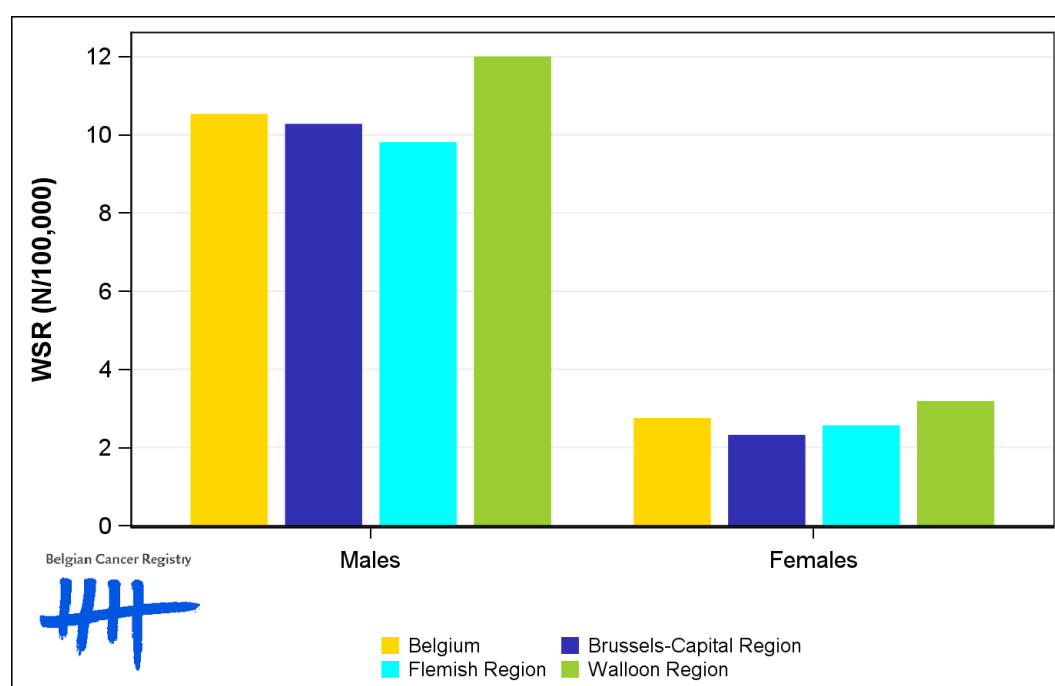
Females	Age (years)	N	CR	ESR	WSR	CRi
Belgium	70.9	368	6.4	4.0	2.7	0.36
Brussels-Capital Region	72.4	29	4.8	3.5	2.3	0.25
Flemish Region	71.1	206	6.3	3.8	2.6	0.33
Walloon Region	70.3	133	7.2	4.7	3.2	0.43

CR=Crude (all ages) Rate (N/100,000 person-years)
 ESR=Age-Standardised Rate, using the European Standard Population (N/100,000 person-years)
 WSR=Age-Standardised Rate, using the World Standard Population (N/100,000 person-years)
 CRi=Cumulative Risk for 0-74 years (%)

Belgian Cancer Registry



Figure 1: Oesophageal cancer: Age-standardised incidence rates by sex and region, 2017



1.2. Age-specific incidence rates

Table 2: Oesophageal cancer: Age-specific incidence rates, crude rate (CR) and age-standardised incidence rates (ESR and WSR) by sex, Belgium 2017

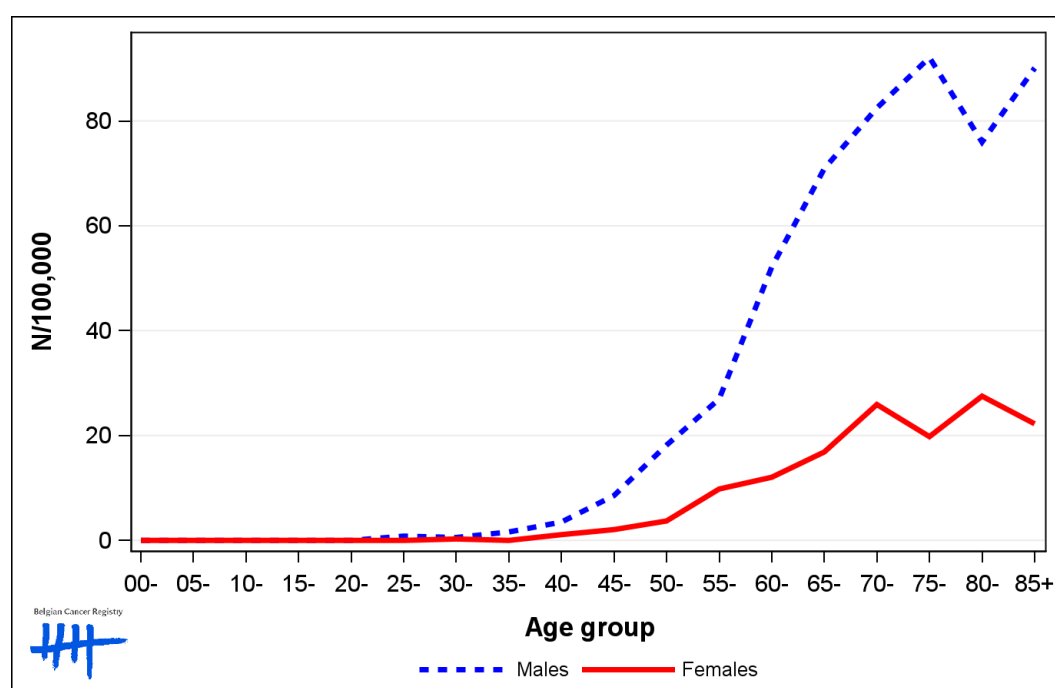
	00-	05-	10-	15-	20-	25-	30-	35-	40-	45-	50-	55-	60-	65-	70-	75-	80-	85+	CR	ESR	WSR
Males	0.0	0.0	0.0	0.0	0.0	0.8	0.6	1.6	3.5	8.6	18.2	27.0	52.1	70.9	82.5	92.1	76.0	90.1	20.6	15.4	10.5
Females	0.0	0.0	0.0	0.0	0.0	0.0	0.3	0.0	1.1	2.1	3.7	9.8	12.0	16.9	25.9	19.8	27.5	22.2	6.4	4.0	2.7

CR=Crude (all ages) Rate (N/100,000 person-years)

ESR=Age-Standardised Rate, using the European Standard Population (N/100,000 person-years)

WSR=Age-Standardised Rate, using the World Standard Population (N/100,000 person-years)

Figure 2: Oesophageal cancer: Age-specific incidence rates by sex, 2017



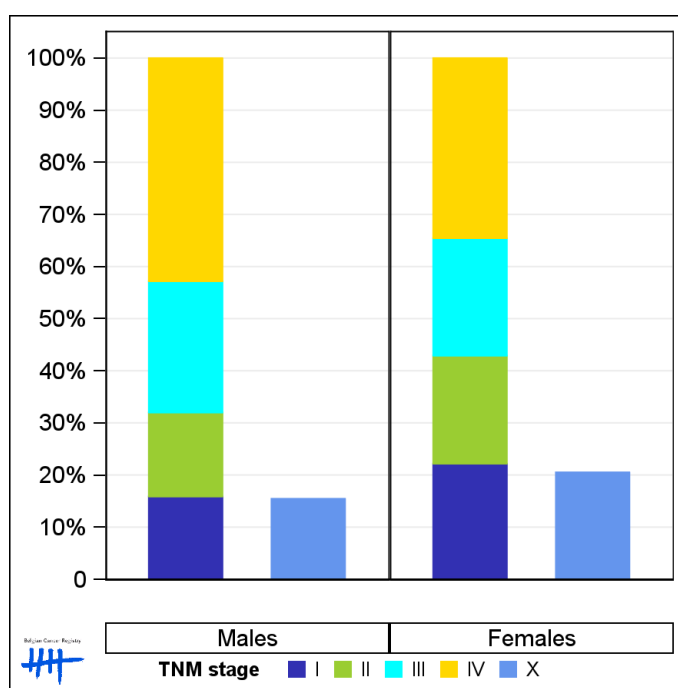
1.3. Combined stage

Table 3: Oesophageal cancer: Distribution of combined stage by sex, Belgium 2017

	Stage I	Stage II	Stage III	Stage IV	Stage X	Stage NA	Total
Males							
N	147	149	233	396	169	54	1,148
%	12.8	13.0	20.3	34.5	14.7	4.7	100
Females							
N	61	57	62	95	71	22	368
%	16.6	15.5	16.8	25.8	19.3	6.0	100

Staging according to the TNM 8th edition (Ref: Brierley JD, Gospodarowicz MK, Wittekind Ch. TNM classification of malignant tumours, UICC 8th edition)
 Combined TNM stage : compilation of pathological (pTNM) and clinical (cTNM) stage. pTNM prevails over cTNM, except when cTNM stage is IV
 Stage X: diagnoses with an unknown stage
 Stage NA: diagnoses with a histological diagnosis where no stage can be evaluated (Not Applicable)

Figure 3: Oesophageal cancer: Bar chart of known combined stage by sex, Belgium 2017



1.4. Trends in incidence

Table 4: Oesophageal cancer: Age-standardised incidence rates (WSR) and average annual percentage change (AAPC) by incidence year, sex and region

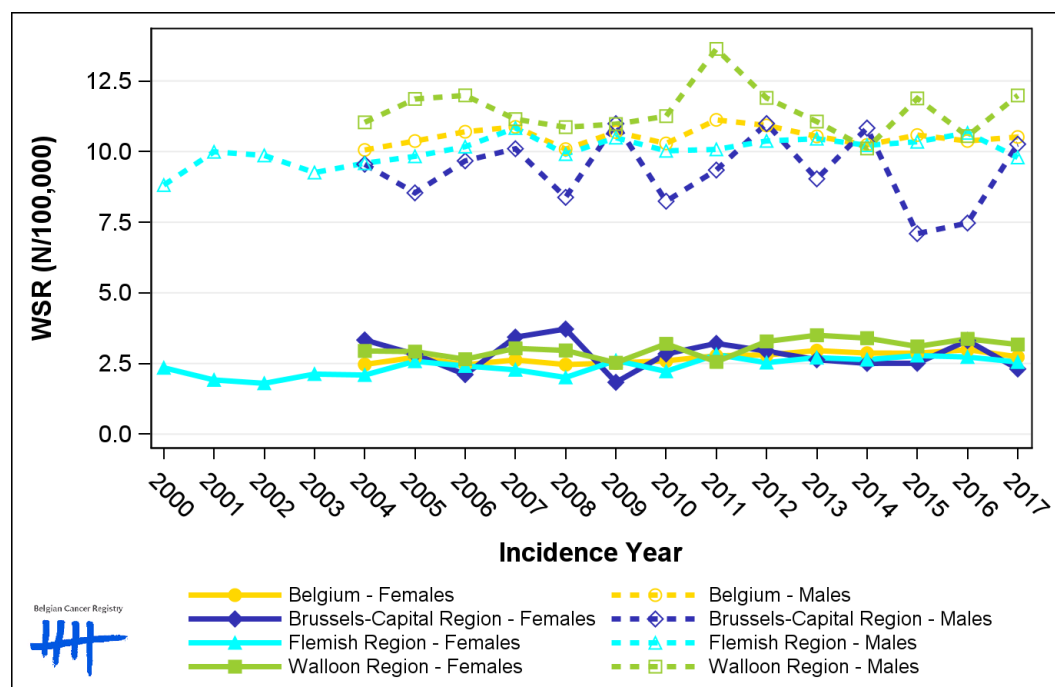
Males	2003	2004	2005	2006	2007	2008	2009	2010	2011	2012	2013	2014	2015	2016	2017	AAPC	95% CI
Belgium	10.1	10.4	10.7	10.9	10.9	10.1	10.7	10.3	11.1	10.9	10.5	10.2	10.6	10.4	10.5	0;0.1	[-0.3; 0.5]
Brussels-Capital Region	9.6	8.5	9.7	10.1	8.4	11.0	8.2	9.3	11.0	9.0	10.8	7.1	7.5	10.3	-0.5	[-2.5; 1.6]	
Flemish Region	9.3	9.6	9.8	10.2	10.8	9.9	10.5	10.0	10.1	10.4	10.5	10.2	10.3	10.7	9.8	0.7	[0.3; 1.1]
Walloon Region	11.0	11.9	12.0	11.1	10.9	11.0	11.3	13.6	11.9	11.1	10.1	11.9	10.5	12.0	-0.1	[-1.2; 1.0]	

Females	2003	2004	2005	2006	2007	2008	2009	2010	2011	2012	2013	2014	2015	2016	2017	AAPC	95% CI
Belgium	2.5	2.7	2.5	2.6	2.5	2.5	2.6	2.6	2.8	2.8	3.0	2.9	2.9	3.0	2.7	1.0	[0.2; 1.8]
Brussels-Capital Region	3.3	2.8	2.1	3.4	3.7	1.8	2.8	3.2	2.9	2.6	2.5	2.5	3.3	2.3	-0.8	[-3.7; 2.1]	
Flemish Region	2.1	2.1	2.6	2.4	2.3	2.0	2.6	2.2	2.8	2.5	2.7	2.6	2.8	2.7	2.6	1.7	[0.6; 2.8]
Walloon Region	2.9	2.9	2.7	3.0	3.0	2.5	3.2	2.6	2.6	3.3	3.5	3.4	3.1	3.4	3.2	1.4	[0.1; 2.7]

WSR=Age-Standardised Rate, using the World Standard Population (N/100,000 person-years)

AAPC = Average Annual Percentage Change over the 2004-2017 period (except for the Flemish region : 2003-2017).

Figure 4: Oesophageal cancer: Age-standardised incidence rates (WSR) by incidence year, sex and region



1.5. Incidence by broad age groups

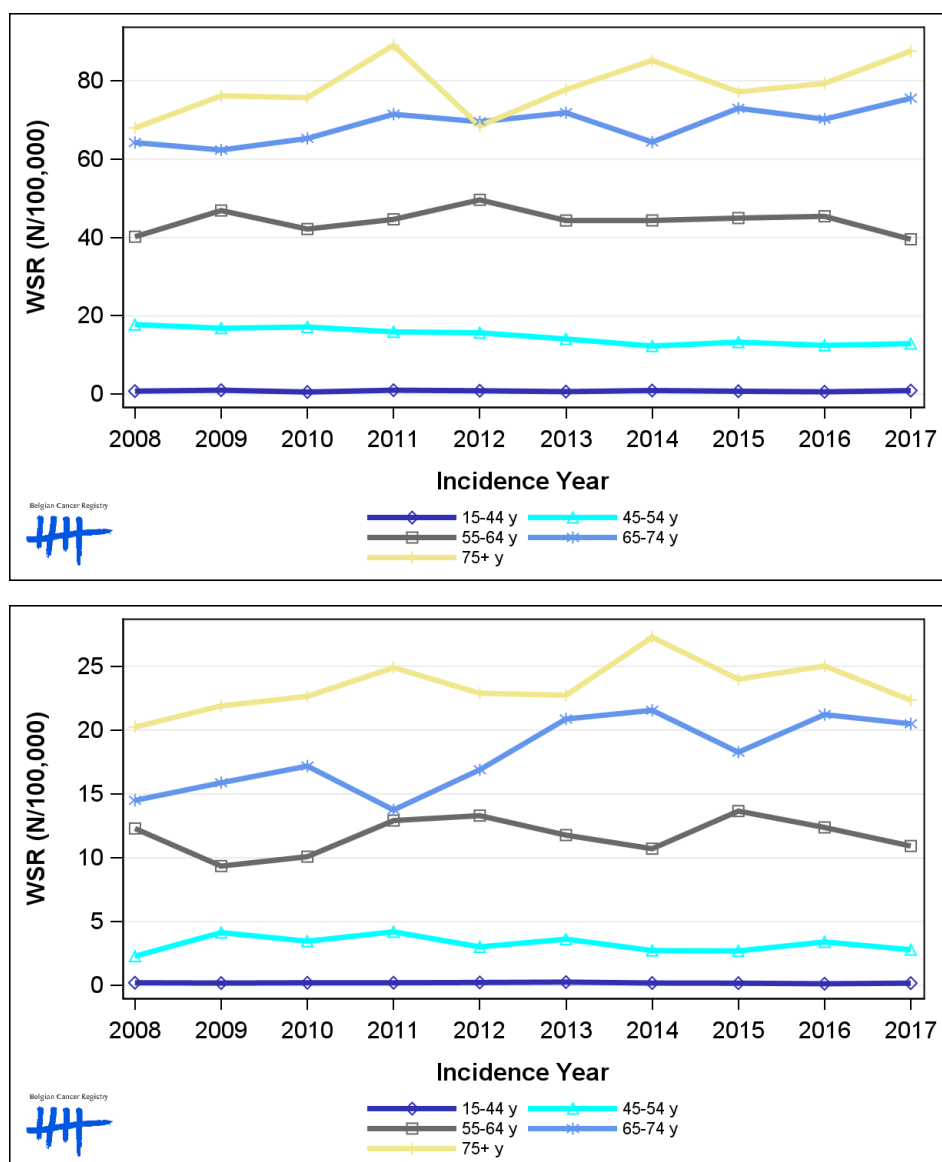
Table 5: Oesophageal cancer: Number of new diagnoses and age-standardised incidence rates (WSR) by broad age groups and incidence year by sex, Belgium

	N										WSR									
	2008	2009	2010	2011	2012	2013	2014	2015	2016	2017	2008	2009	2010	2011	2012	2013	2014	2015	2016	2017
Males																				
All ages	915	989	986	1,086	1,053	1,067	1,066	1,098	1,109	1,148	10.1	10.7	10.3	11.1	10.9	10.5	10.2	10.6	10.4	10.5
0-14 y	0	0	0	0	0	0	0	0	0	0	0.0	0.0	0.0	0.0	0.0	0.0	0.0	0.0	0.0	0.0
15-44 y	23	28	16	29	25	18	25	21	17	24	0.8	1.0	0.6	1.0	0.9	0.7	1.0	0.8	0.6	0.9
45-54 y	140	135	141	133	131	119	105	111	107	109	17.8	16.9	17.2	15.9	15.7	14.1	12.3	13.3	12.5	12.9
55-64 y	249	297	274	298	331	300	302	310	318	280	40.2	46.9	42.2	44.6	49.6	44.3	44.4	45.0	45.4	39.5
65-74 y	278	270	285	309	312	333	305	355	352	394	64.2	62.3	65.3	71.5	69.5	71.8	64.4	73.0	70.2	75.5
75+ y	225	259	270	317	254	297	329	301	315	341	67.9	76.1	75.7	89.0	68.5	77.7	85.2	77.2	79.3	87.6
Females																				
All ages	292	306	322	348	358	370	386	375	395	368	2.5	2.5	2.6	2.8	2.8	3.0	2.9	2.9	3.0	2.7
0-14 y	0	0	0	0	0	0	0	0	0	0	0.0	0.0	0.0	0.0	0.0	0.0	0.0	0.0	0.0	0.0
15-44 y	6	5	6	6	6	7	5	5	3	5	0.2	0.2	0.2	0.2	0.2	0.3	0.2	0.2	0.1	0.2
45-54 y	18	33	28	35	25	30	23	23	28	23	2.3	4.2	3.5	4.2	3.0	3.6	2.7	2.7	3.4	2.8
55-64 y	78	61	67	88	92	81	74	96	89	80	12.3	9.4	10.1	12.9	13.3	11.8	10.7	13.7	12.4	10.9
65-74 y	73	77	85	67	85	107	114	98	116	119	14.5	15.9	17.2	13.7	16.9	20.9	21.5	18.3	21.2	20.5
75+ y	117	130	136	152	150	145	170	153	159	141	20.2	21.9	22.6	24.9	22.9	22.7	27.3	24.0	25.0	22.3

N=Number of invasive tumours

WSR=Age-Standardised Rate, using the World Standard Population (N/100,000 person-years)

Figure 5: Oesophageal cancer: Age-standardised incidence rates (WSR) versus incidence year by broad age groups for males (top) and females (bottom), Belgium



2. Relative survival

Table 6: Oesophageal cancer: 5-year relative survival proportion by sex, age group and region, Belgium 2013-2017

	5-year relative survival 2013-2017 (%)					
	Males			Females		
	N at risk	estimate	95% CI	N at risk	estimate	95% CI
Overall	5,460	24.7	[23.3, 26.3]	1,881	25.7	[23.3, 28.3]
Age group						
15-59 years	1,278	30.1	[27.2, 33.1]	326	36.6	[30.5, 42.8]
60-74 years	2,604	26.3	[24.1, 28.6]	792	31.0	[27.2, 35.0]
75+ years	1,578	17.2	[14.5, 20.3]	763	15.0	[11.9, 18.8]
Region						
Brussels-Capital Region	356	27.8	[21.9, 34.3]	143	23.0	[15.3, 32.0]
Flemish Region	3,337	24.7	[22.9, 26.7]	1,065	24.9	[21.7, 28.3]
Walloon Region	1,767	24.1	[21.5, 27.0]	673	27.7	[23.7, 32.0]

Figure 6: Oesophageal cancer: relative survival proportion by sex, Belgium 2013-2017

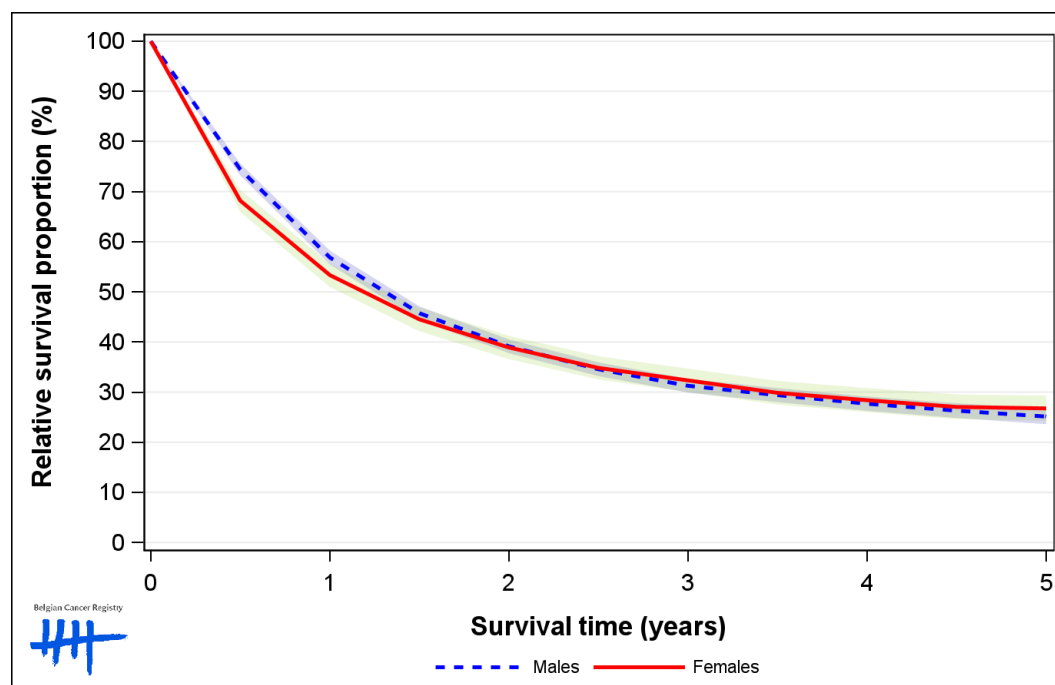


Figure 7: Oesophageal cancer: relative survival proportion by age group in males, Belgium 2013-2017

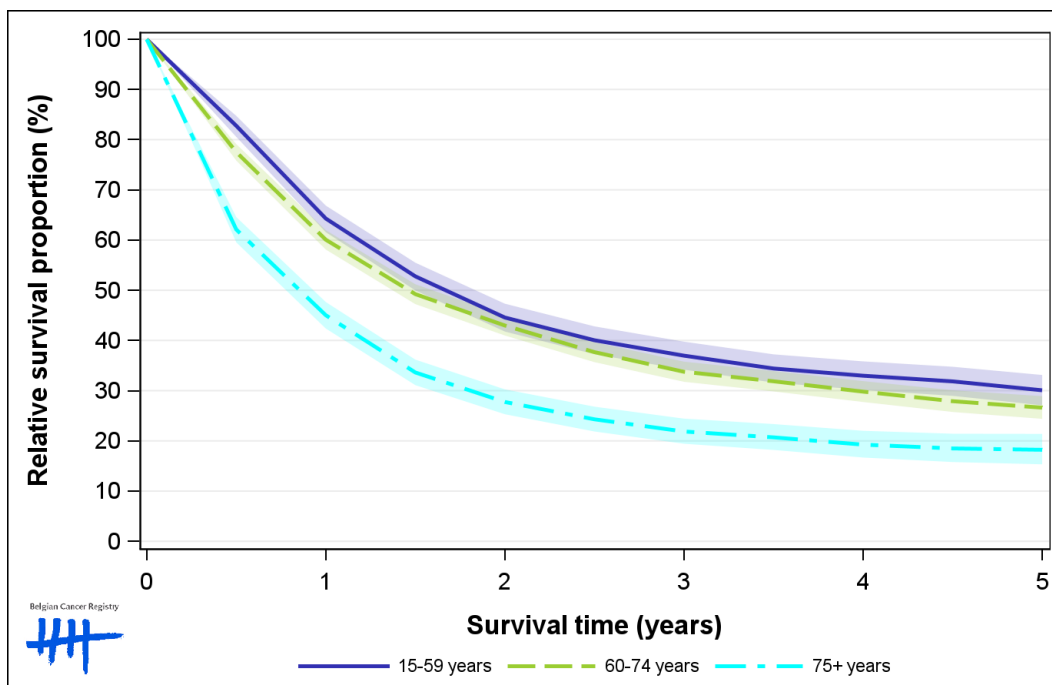


Figure 8: Oesophageal cancer: relative survival proportion by age group in females, Belgium 2013-2017

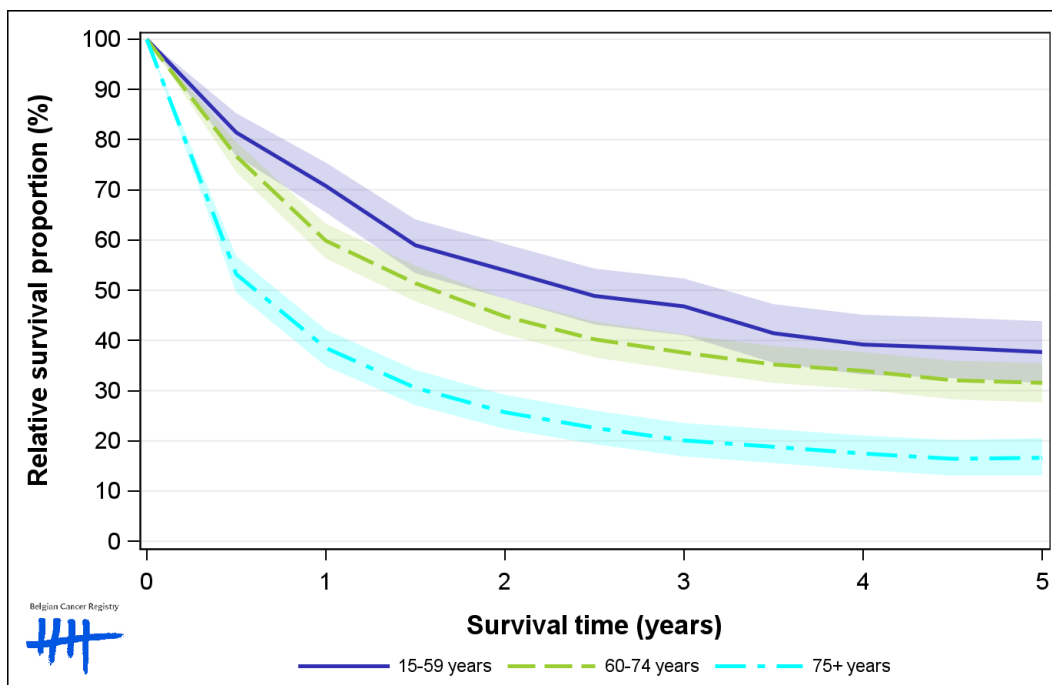


Figure 9: Oesophageal cancer: relative survival proportion by region in males, Belgium 2013-2017

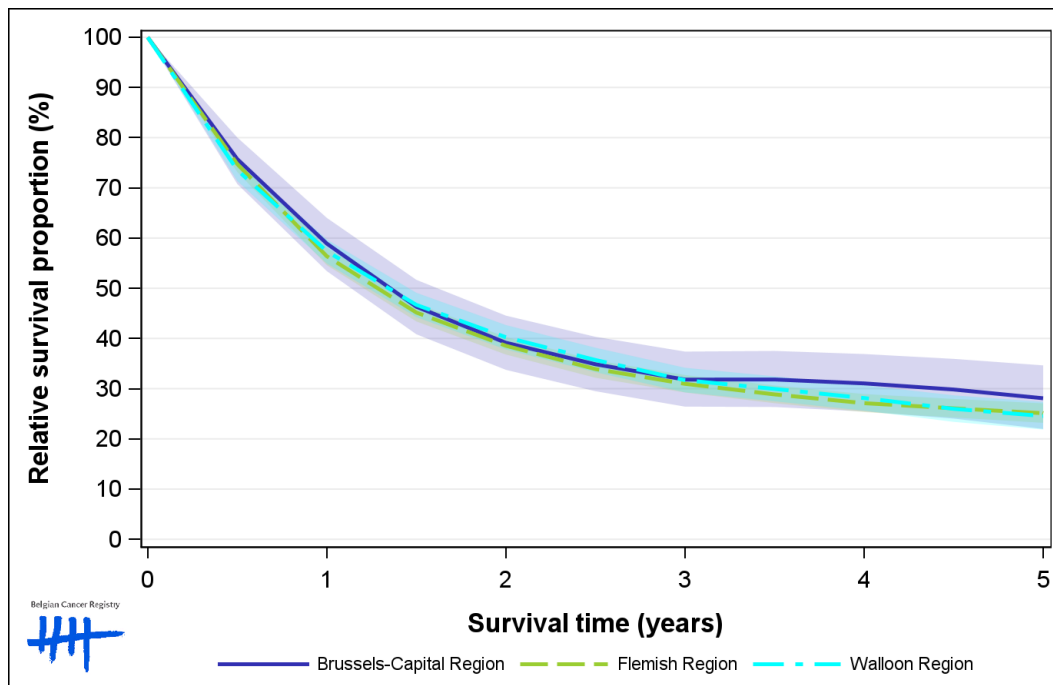


Figure 10: Oesophageal cancer: relative survival proportion by region in females, Belgium 2013-2017

