

Belgian Cancer Registry



Cancer Fact Sheet

Myeloid Malignancies

Belgium 2017

1. Cancer Incidence

1.1. Number of new diagnoses and incidence rates

Table 1: Myeloid Malignancies: Average age at diagnosis, number of new cancer diagnoses (N), crude rate (CR), age-standardised incidence rates (ESR and WSR) and cumulative risk by sex and region, 2017

Males	Age (years)	N	CR	ESR	WSR	CRi
Belgium	69.0	1,370	24.6	17.7	12.2	1.32
Brussels-Capital Region	64.9	107	18.4	18.2	12.8	1.30
Flemish Region	69.9	807	25.1	16.7	11.4	1.24
Walloon Region	68.4	456	25.8	19.7	13.4	1.49

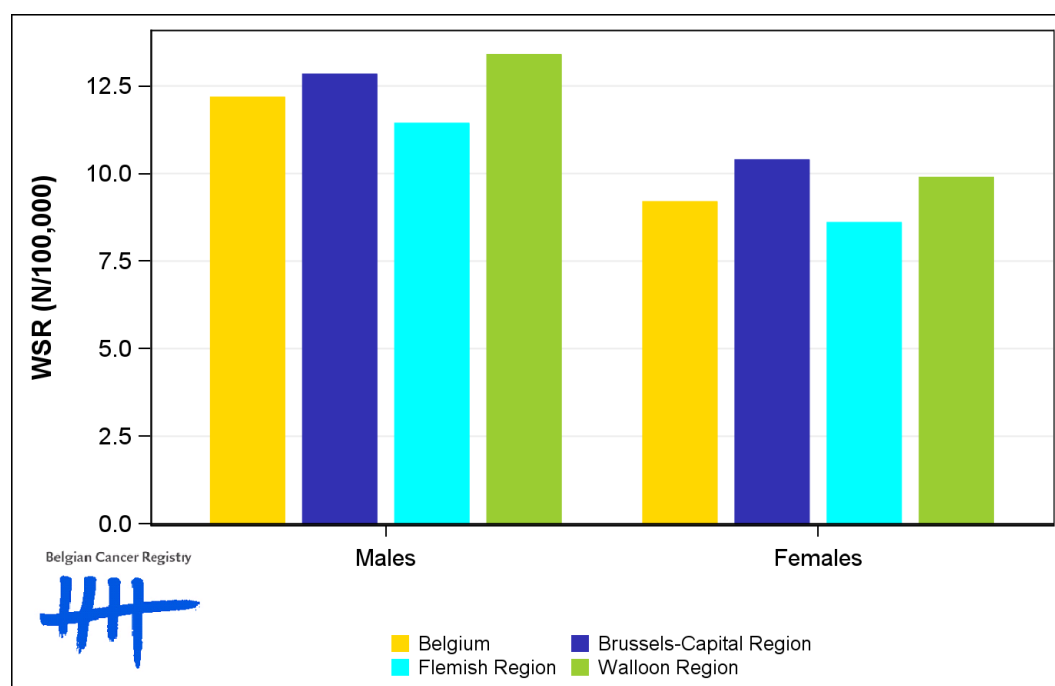
Females	Age (years)	N	CR	ESR	WSR	CRi
Belgium	68.9	1,135	19.7	12.7	9.2	1.00
Brussels-Capital Region	66.7	109	17.9	14.4	10.4	1.13
Flemish Region	69.4	636	19.3	12.0	8.6	0.95
Walloon Region	68.8	390	21.1	13.6	9.9	1.04

CR=Crude (all ages) Rate (N/100,000 person-years)
 ESR=Age-Standardised Rate, using the European Standard Population (N/100,000 person-years)
 WSR=Age-Standardised Rate, using the World Standard Population (N/100,000 person-years)
 CRi=Cumulative Risk for 0-74 years (%)

Belgian Cancer Registry



Figure 1: Myeloid Malignancies: Age-standardised incidence rates by sex and region, 2017



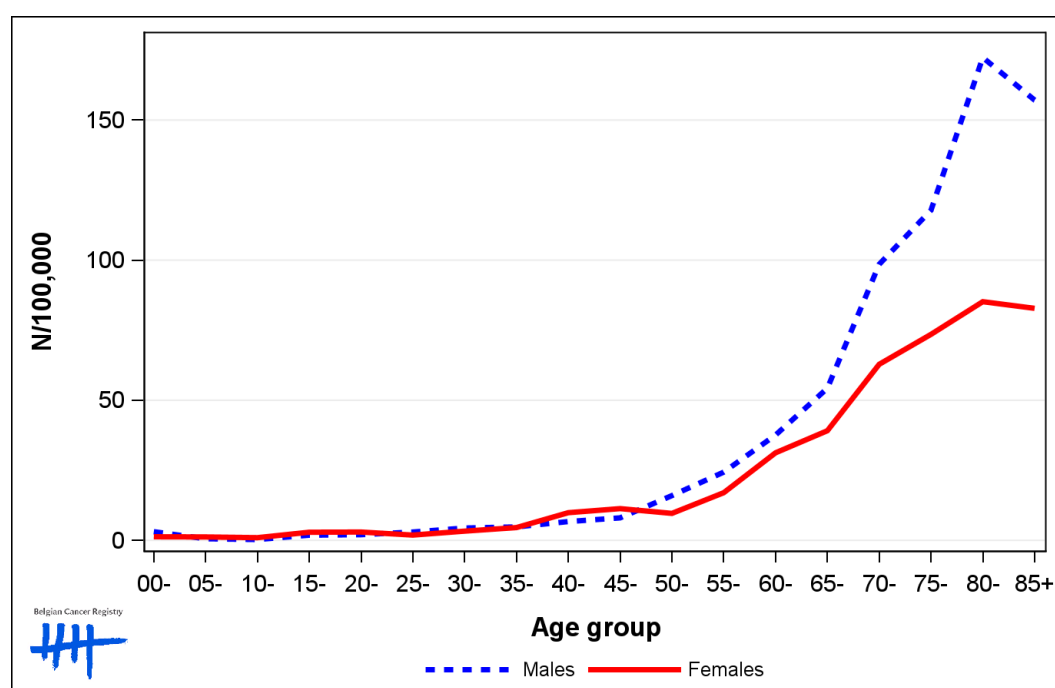
1.2. Age-specific incidence rates

Table 2: Myeloid Malignancies: Age-specific incidence rates, crude rate (CR) and age-standardised incidence rates (ESR and WSR) by sex, Belgium 2017

	00-	05-	10-	15-	20-	25-	30-	35-	40-	45-	50-	55-	60-	65-	70-	75-	80-	85+	CR	ESR	WSR
Males	3.1	0.6	0.3	1.9	2.0	3.0	4.4	4.8	6.7	8.0	16.0	24.4	37.6	54.3	98.5	117.8	172.3	157.1	24.6	17.7	12.2
Females	1.3	1.2	1.0	2.9	3.0	1.9	3.3	4.6	9.9	11.3	9.6	17.0	31.3	39.1	62.8	73.5	85.2	82.8	19.7	12.7	9.2

CR=Crude (all ages) Rate (N/100,000 person-years)
 ESR=Age-Standardised Rate, using the European Standard Population (N/100,000 person-years)
 WSR=Age-Standardised Rate, using the World Standard Population (N/100,000 person-years)

Figure 2: Myeloid Malignancies: Age-specific incidence rates by sex, 2017



1.3. Trends in incidence

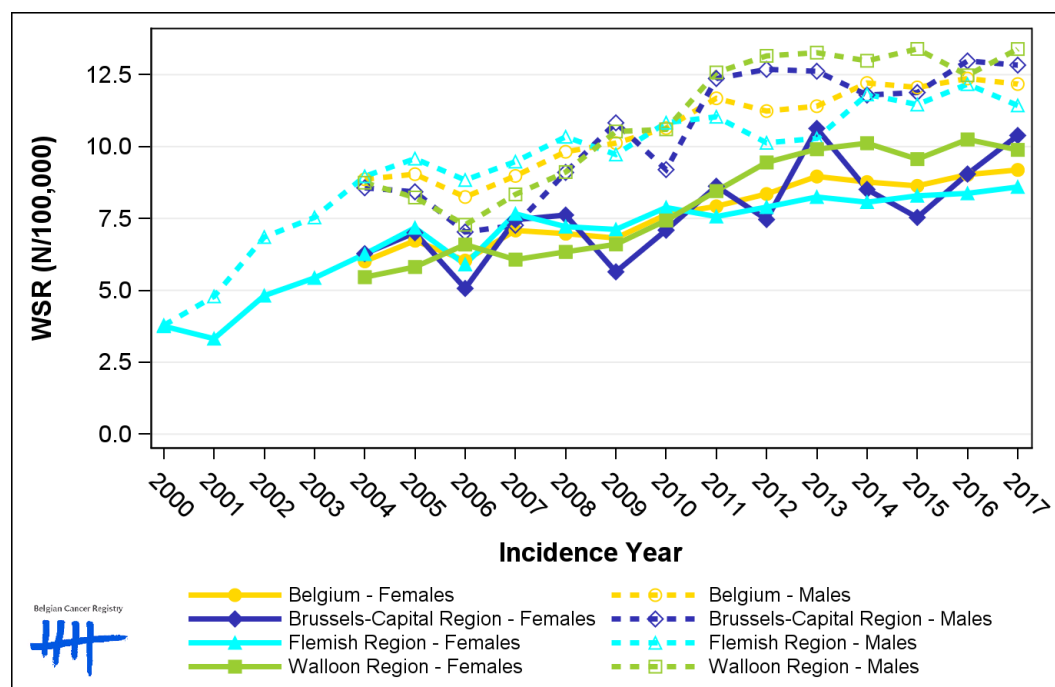
Table 3: Myeloid Malignancies: Age-standardised incidence rates (WSR) and average annual percentage change (AAPC) by incidence year, sex and region

Males	2003	2004	2005	2006	2007	2008	2009	2010	2011	2012	2013	2014	2015	2016	2017	AAPC	95% CI
Belgium	8.9	9.0	8.2	9.0	9.8	10.1	10.6	11.7	11.2	11.4	12.2	12.1	12.4	12.2	3.2	[2.5; 3.8]	
Brussels-Capital Region	8.6	8.4	7.0	7.3	9.1	10.8	9.2	12.4	12.7	12.6	11.8	11.9	13.0	12.8	4.6	[2.9; 6.4]	
Flemish Region	7.5	9.0	9.6	8.8	9.5	10.3	9.7	10.8	11.0	10.1	10.3	11.8	11.5	12.2	11.4	2.6	[1.8; 3.4]
Walloon Region	8.7	8.2	7.3	8.3	9.1	10.5	10.6	12.6	13.2	13.3	13.0	13.4	12.5	13.4	3.0	[2.4; 3.7]	

Females	2003	2004	2005	2006	2007	2008	2009	2010	2011	2012	2013	2014	2015	2016	2017	AAPC	95% CI
Belgium	6.0	6.7	6.0	7.1	7.0	6.8	7.6	7.9	8.4	9.0	8.8	8.6	9.0	9.2	3.4	[2.7; 4.1]	
Brussels-Capital Region	6.3	7.0	5.1	7.5	7.6	5.6	7.1	8.6	7.5	10.6	8.5	7.5	9.0	10.4	3.7	[1.5; 6.0]	
Flemish Region	5.4	6.3	7.2	5.9	7.7	7.2	7.1	7.9	7.6	7.9	8.2	8.1	8.3	8.4	8.6	3.0	[2.1; 3.9]
Walloon Region	5.5	5.8	6.6	6.1	6.3	6.6	7.4	8.5	9.5	9.9	10.1	9.6	10.2	9.9	4.5	[3.8; 5.2]	

WSR=Age-Standardised Rate, using the World Standard Population (N/100,000 person-years)
 AAPC = Average Annual Percentage Change over the 2004-2017 period (except for the Flemish region : 2003-2017).

Figure 3: Myeloid Malignancies: Age-standardised incidence rates (WSR) by incidence year, sex and region



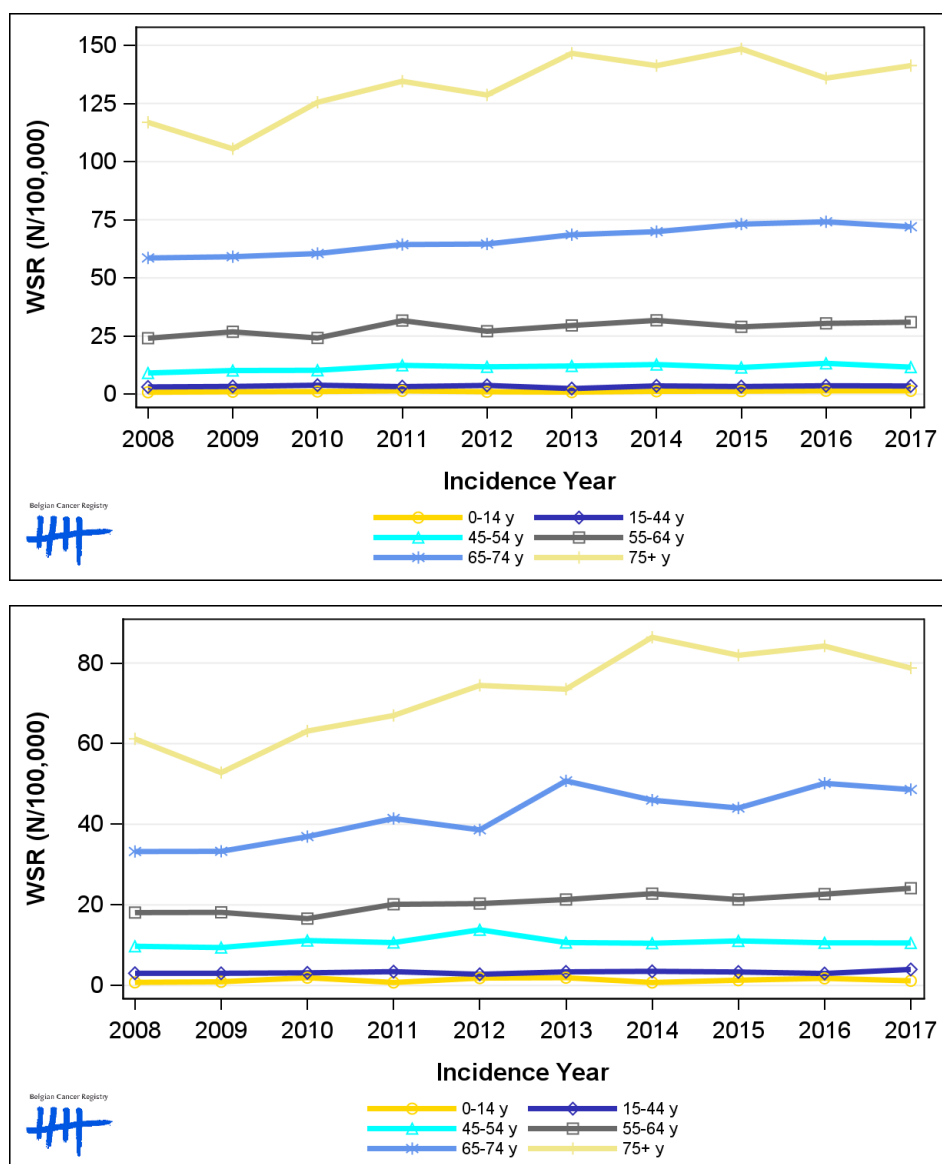
1.4. Incidence by broad age groups

Table 4: Myeloid Malignancies: Number of new diagnoses and age-standardised incidence rates (WSR) by broad age groups and incidence year by sex, Belgium

	N										WSR									
	2008	2009	2010	2011	2012	2013	2014	2015	2016	2017	2008	2009	2010	2011	2012	2013	2014	2015	2016	2017
Males																				
All ages	951	969	1,056	1,177	1,149	1,235	1,301	1,333	1,335	1,370	9.8	10.1	10.6	11.7	11.2	11.4	12.2	12.1	12.4	12.2
0-14 y	8	10	11	14	10	9	12	13	15	13	0.9	1.1	1.2	1.5	1.1	0.9	1.3	1.3	1.5	1.5
15-44 y	76	80	89	79	89	61	84	80	84	83	3.1	3.4	3.9	3.3	3.8	2.5	3.6	3.3	3.7	3.6
45-54 y	71	80	83	101	97	101	106	96	110	98	9.1	10.2	10.3	12.4	11.8	12.2	12.8	11.5	13.3	11.7
55-64 y	147	171	157	210	181	198	216	199	211	221	24.1	26.8	24.2	31.7	27.1	29.6	31.8	29.0	30.5	31.0
65-74 y	254	258	270	284	294	320	333	357	373	381	58.6	59.1	60.5	64.4	64.6	68.6	69.9	73.1	74.1	72.0
75+ y	395	370	446	489	478	546	550	588	542	574	116.9	105.5	125.5	134.6	128.7	146.6	141.3	148.5	135.9	141.3
Females																				
All ages	790	751	851	925	1,002	1,050	1,113	1,090	1,144	1,135	7.0	6.8	7.6	7.9	8.4	9.0	8.8	8.6	9.0	9.2
0-14 y	7	8	17	7	17	18	7	12	17	11	0.8	0.9	2.0	0.8	1.9	2.0	0.8	1.3	1.8	1.2
15-44 y	72	73	74	80	65	81	81	76	72	91	3.1	3.1	3.2	3.5	2.8	3.4	3.5	3.4	3.0	4.0
45-54 y	76	75	88	86	113	86	84	88	84	83	9.8	9.4	11.2	10.7	13.8	10.7	10.5	11.1	10.6	10.6
55-64 y	114	118	110	137	140	147	159	151	163	175	18.1	18.2	16.6	20.2	20.3	21.3	22.8	21.3	22.7	24.1
65-74 y	168	171	189	210	201	266	245	239	279	283	33.3	33.3	37.0	41.4	38.6	50.8	46.0	44.0	50.2	48.6
75+ y	353	306	373	405	466	452	537	524	529	492	61.2	52.8	63.1	67.0	74.5	73.5	86.4	81.9	84.2	78.8

N=Number of invasive tumours
WSR=Age-Standardised Rate, using the World Standard Population (N/100,000 person-years)

Figure 4: Myeloid Malignancies: Age-standardised incidence rates (WSR) versus incidence year by broad age groups for males (top) and females (bottom), Belgium



2. Relative survival

Table 5: Myeloid Malignancies: 5-year relative survival proportion by sex, age group and region, Belgium 2013-2017

	5-year relative survival 2013-2017 (%)					
	Males			Females		
	N at risk	estimate	95% CI	N at risk	estimate	95% CI
Overall	6,485	52.9	[51.1, 54.8]	5,437	59.1	[57.3, 61.0]
Age group						
15-59 years	1,299	79.1	[76.4, 81.7]	1,158	77.1	[74.2, 79.7]
60-74 years	2,396	54.2	[51.4, 57.0]	1,754	62.4	[59.5, 65.3]
75+ years	2,791	36.5	[33.3, 39.8]	2,525	46.3	[43.0, 49.8]
Region						
Brussels-Capital Region	508	52.2	[45.7, 58.6]	493	60.1	[53.4, 66.6]
Flemish Region	3,836	52.5	[50.2, 55.0]	3,001	60.3	[57.8, 62.8]
Walloon Region	2,141	53.8	[50.7, 57.0]	1,943	57.0	[53.9, 60.2]

Figure 5: Myeloid Malignancies: relative survival proportion by sex, Belgium 2013-2017

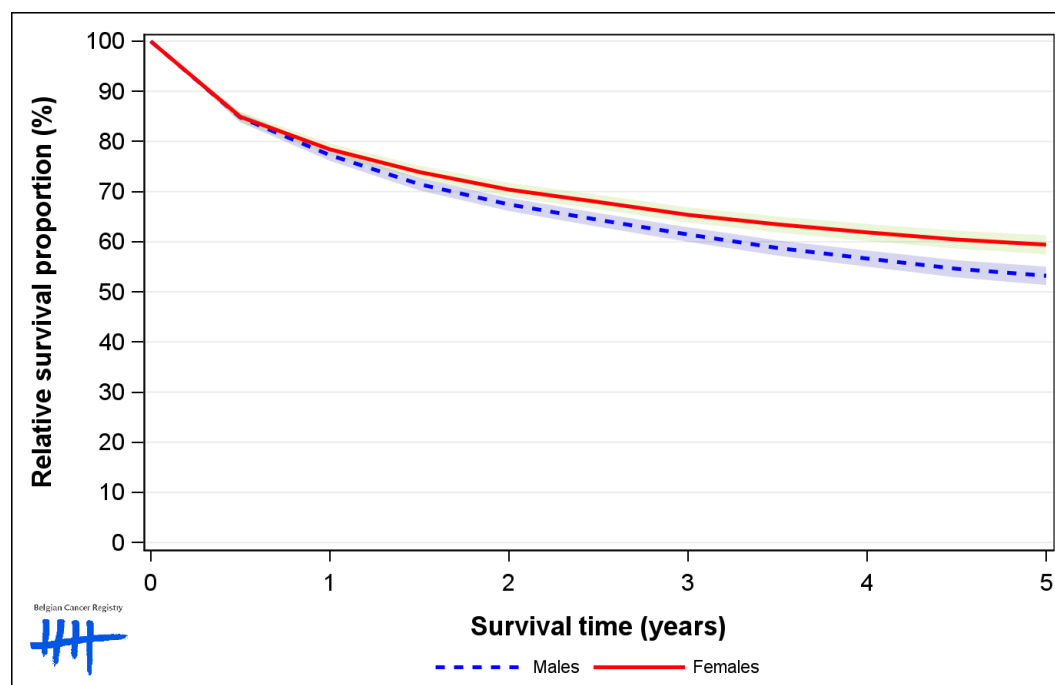


Figure 6: Myeloid Malignancies: relative survival proportion by age group in males, Belgium 2013-2017

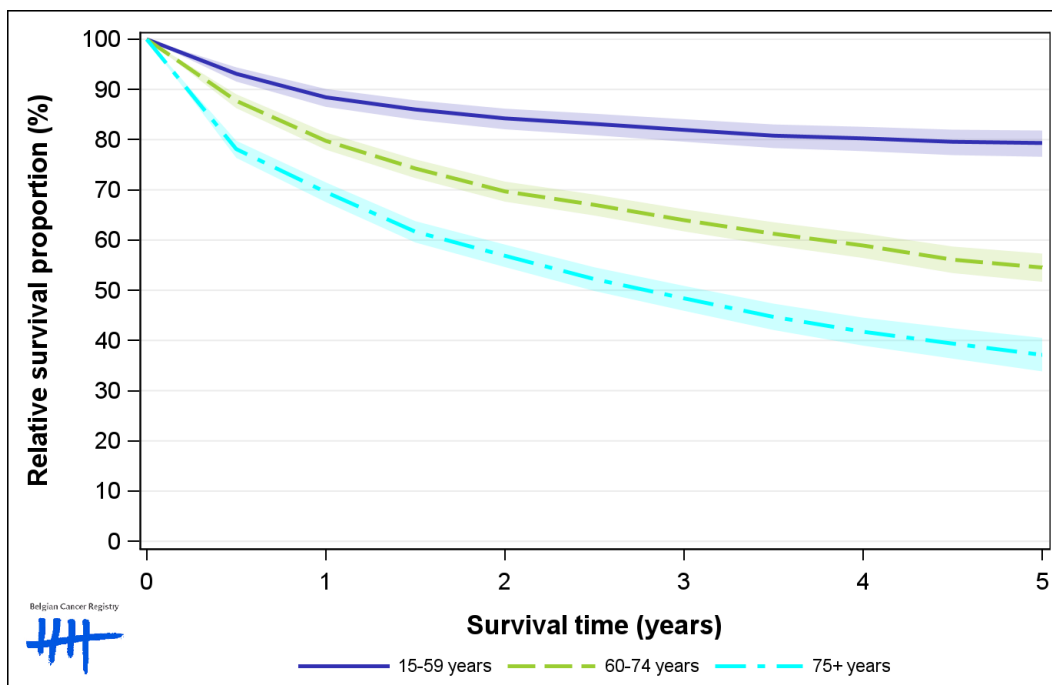


Figure 7: Myeloid Malignancies: relative survival proportion by age group in females, Belgium 2013-2017

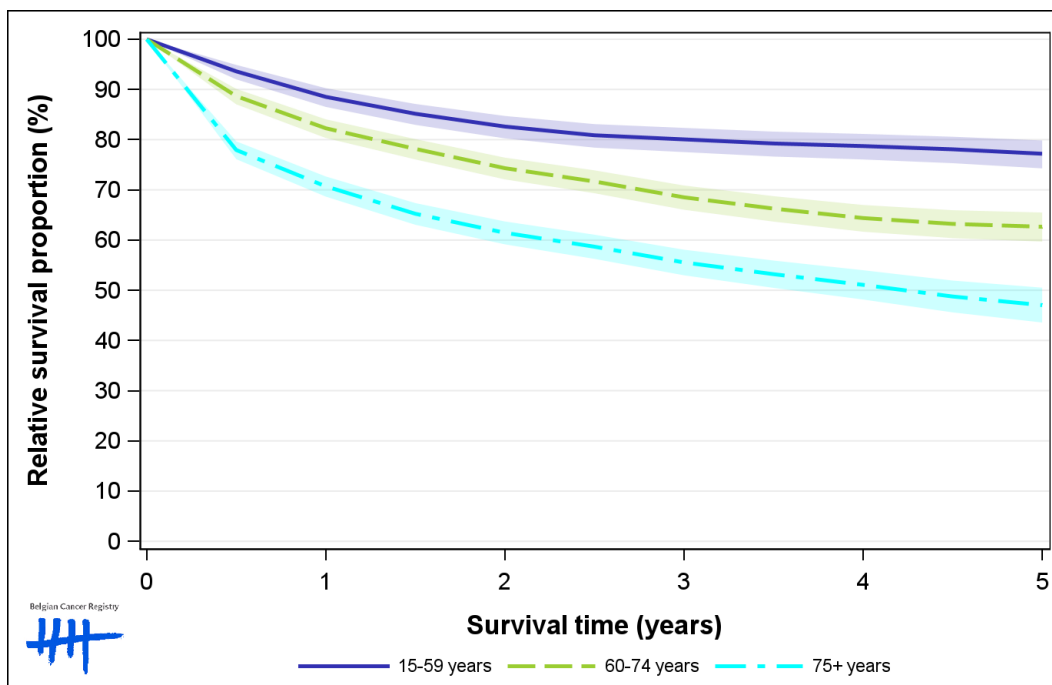


Figure 8: Myeloid Malignancies: relative survival proportion by region in males, Belgium 2013-2017

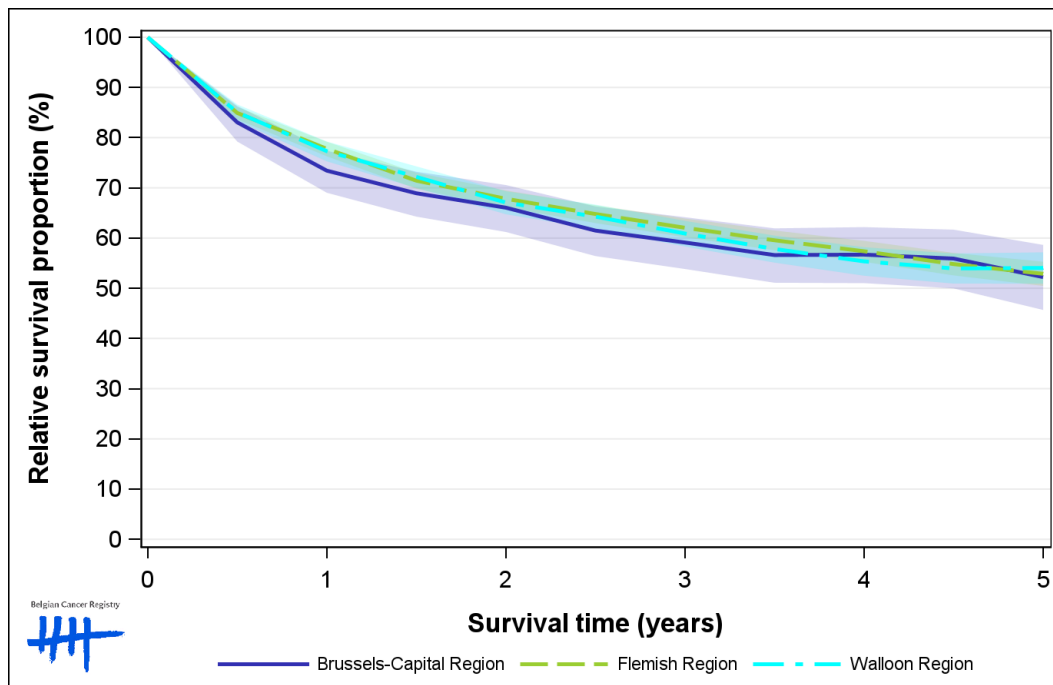


Figure 9: Myeloid Malignancies: relative survival proportion by region in females, Belgium 2013-2017

