

Belgian Cancer Registry



Cancer Fact Sheet **Malignant Melanoma**

ICD10 : C43

Belgium 2017

1. Cancer Incidence

1.1. Number of new diagnoses and incidence rates

Table 1: Malignant Melanoma: Average age at diagnosis, number of new cancer diagnoses (N), crude rate (CR), age-standardised incidence rates (ESR and WSR) and cumulative risk by sex and region, 2017

Males	Age (years)	N	CR	ESR	WSR	CRi
Belgium	61.6	1,445	26.0	21.1	15.6	1.75
Brussels-Capital Region	63.6	93	16.0	16.2	11.1	1.29
Flemish Region	62.2	873	27.1	21.1	15.5	1.73
Walloon Region	59.9	479	27.1	22.9	17.3	1.93

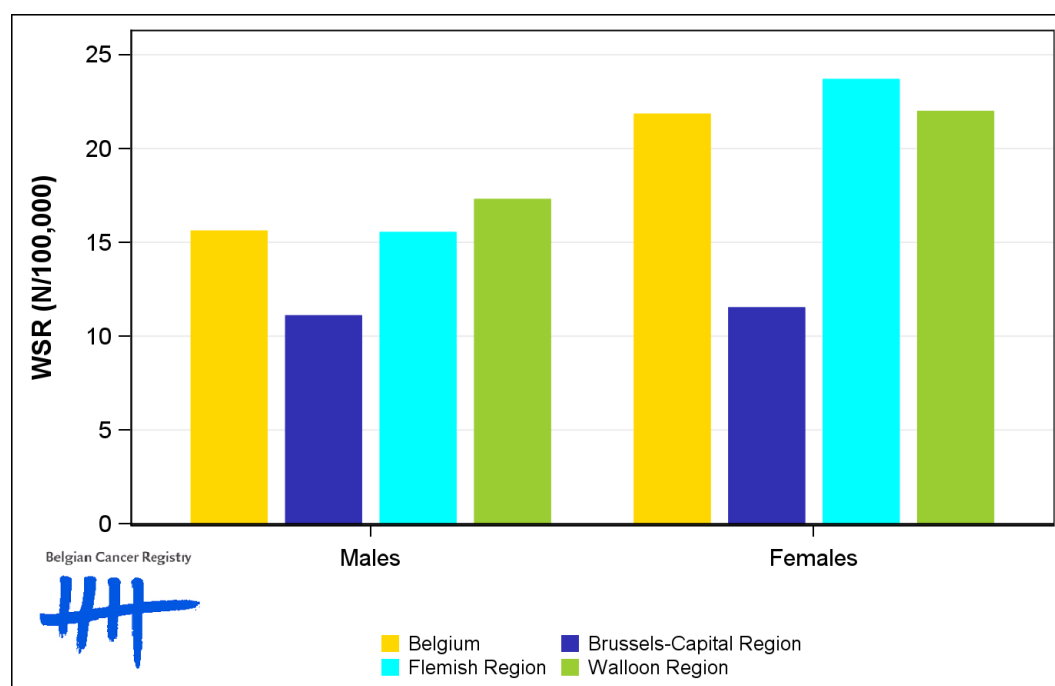
Females	Age (years)	N	CR	ESR	WSR	CRi
Belgium	57.6	1,916	33.3	27.8	21.8	2.19
Brussels-Capital Region	62.4	113	18.5	15.7	11.5	1.16
Flemish Region	58.0	1,216	36.9	30.3	23.7	2.39
Walloon Region	55.7	587	31.7	27.4	22.0	2.16

CR=Crude (all ages) Rate (N/100,000 person-years)
 ESR=Age-Standardised Rate, using the European Standard Population (N/100,000 person-years)
 WSR=Age-Standardised Rate, using the World Standard Population (N/100,000 person-years)
 CRi=Cumulative Risk for 0-74 years (%)

Belgian Cancer Registry



Figure 1: Malignant Melanoma: Age-standardised incidence rates by sex and region, 2017



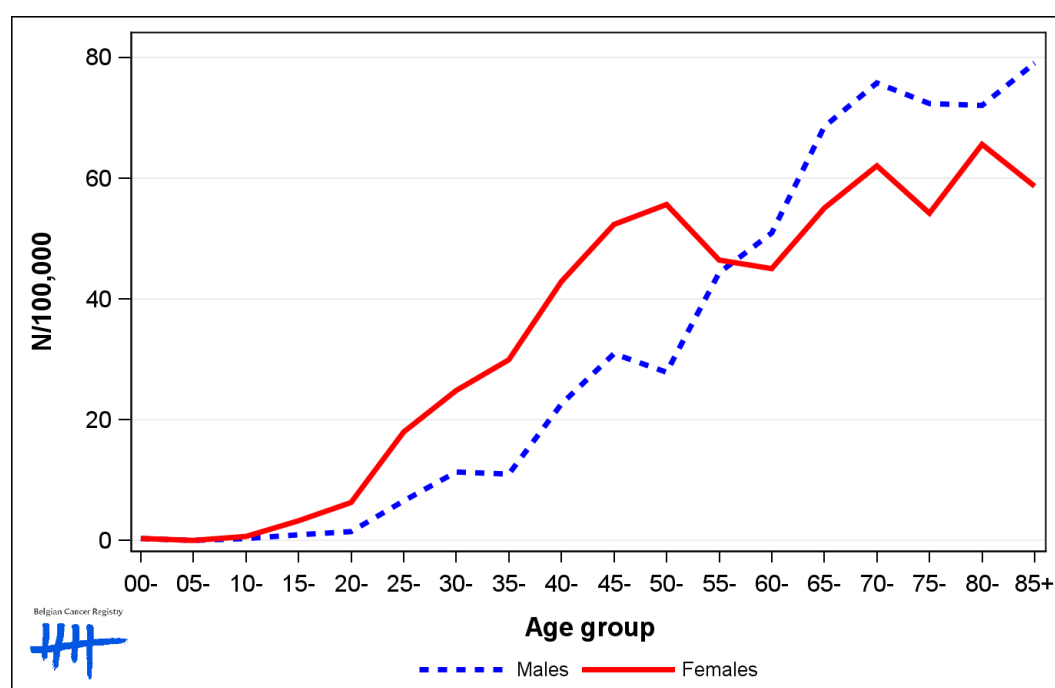
1.2. Age-specific incidence rates

Table 2: Malignant Melanoma: Age-specific incidence rates, crude rate (CR) and age-standardised incidence rates (ESR and WSR) by sex, Belgium 2017

	00-	05-	10-	15-	20-	25-	30-	35-	40-	45-	50-	55-	60-	65-	70-	75-	80-	85+	CR	ESR	WSR
Males	0.3	0.0	0.3	0.9	1.5	6.5	11.3	11.0	22.6	30.9	27.9	44.3	50.9	68.5	75.8	72.4	72.1	79.1	26.0	21.1	15.6
Females	0.3	0.0	0.7	3.2	6.3	18.0	24.8	29.9	42.9	52.3	55.7	46.4	45.0	55.1	62.1	54.2	65.6	58.7	33.3	27.8	21.8

CR=Crude (all ages) Rate (N/100,000 person-years)
 ESR=Age-Standardised Rate, using the European Standard Population (N/100,000 person-years)
 WSR=Age-Standardised Rate, using the World Standard Population (N/100,000 person-years)

Figure 2: Malignant Melanoma: Age-specific incidence rates by sex, 2017



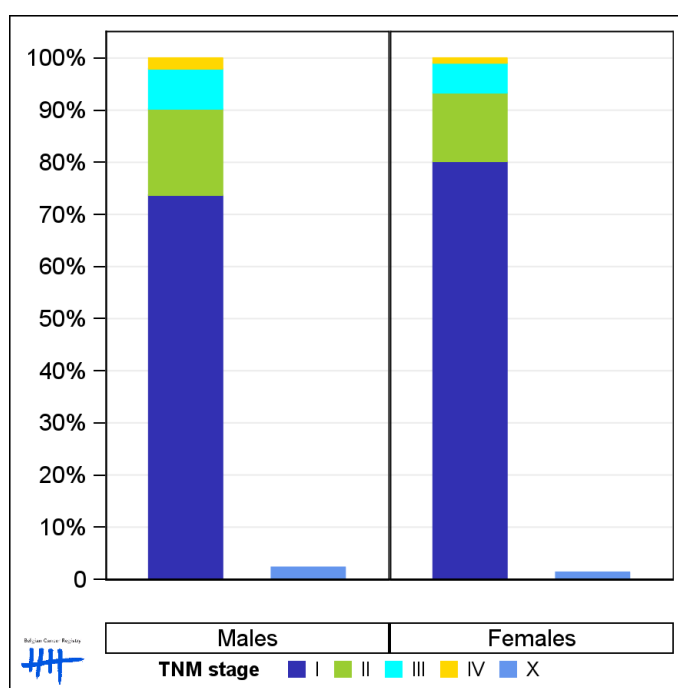
1.3. Combined stage

Table 3: Malignant Melanoma: Distribution of combined stage by sex, Belgium 2017

	Stage I	Stage II	Stage III	Stage IV	Stage X	Stage NA	Total
Males							
N	1,006	226	105	28	32	48	1,445
%	69.6	15.6	7.3	1.9	2.2	3.3	100
Females							
N	1,482	243	106	17	25	43	1,916
%	77.3	12.7	5.5	0.9	1.3	2.2	100

Staging according to the TNM 8th edition (Ref: Brierley JD, Gospodarowicz MK, Wittekind Ch. TNM classification of malignant tumours, UICC 8th edition)
 Combined TNM stage : compilation of pathological (pTNM) and clinical (cTNM) stage. pTNM prevails over cTNM, except when cTNM stage is IV
 Stage X: diagnoses with an unknown stage
 Stage NA: diagnoses with a histological diagnosis where no stage can be evaluated (Not Applicable)

Figure 3: Malignant Melanoma: Bar chart of known combined stage by sex, Belgium 2017



1.4. Trends in incidence

Table 4: Malignant Melanoma: Age-standardised incidence rates (WSR) and average annual percentage change (AAPC) by incidence year, sex and region

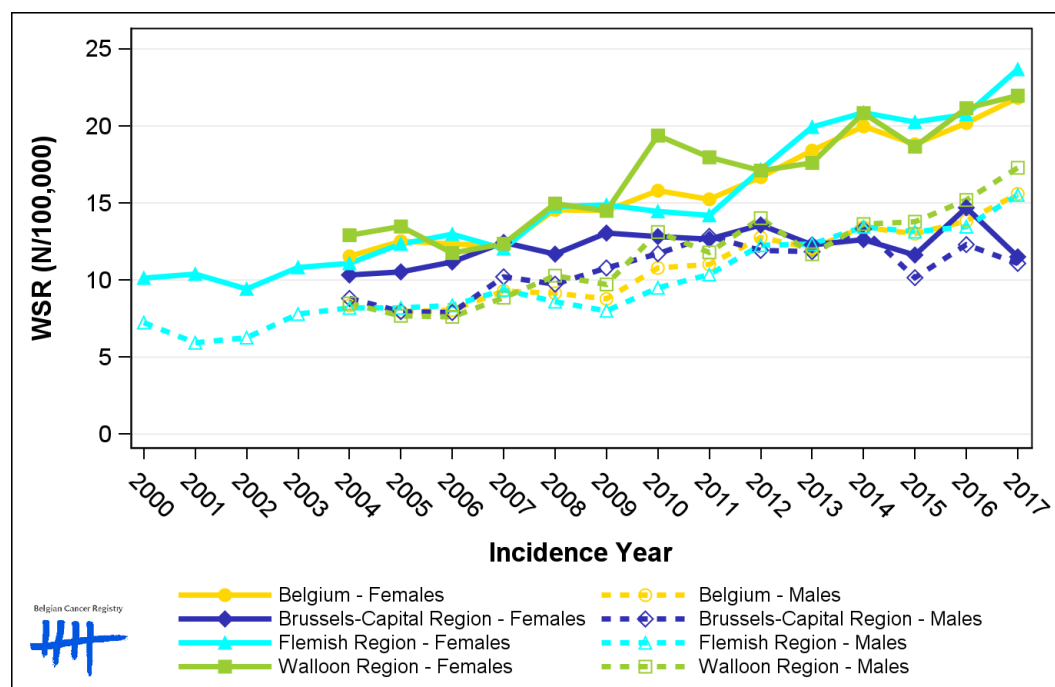
Males	2003	2004	2005	2006	2007	2008	2009	2010	2011	2012	2013	2014	2015	2016	2017	AAPC	95% CI
Belgium	8.3	8.0	8.1	8.1	9.3	9.2	8.8	10.8	11.0	12.8	12.1	13.4	13.0	13.8	15.6	5.3	[4.4; 6.2]
Brussels-Capital Region	8.8	8.0	7.9	7.9	10.2	9.7	10.8	11.7	12.8	11.9	11.8	13.3	10.2	12.3	11.1	2.8	[1.6; 4.1]
Flemish Region	7.8	8.2	8.2	8.4	9.4	8.6	8.0	9.5	10.4	12.3	12.3	13.5	13.1	13.5	15.5	4.9	[4.1; 5.8]
Walloon Region	8.5	7.7	7.6	7.6	8.9	10.3	9.7	13.1	11.8	14.0	11.7	13.6	13.8	15.2	17.3	6.1	[4.6; 7.5]

Females	2003	2004	2005	2006	2007	2008	2009	2010	2011	2012	2013	2014	2015	2016	2017	AAPC	95% CI
Belgium	11.5	12.5	12.3	12.2	14.6	14.5	15.8	15.2	16.7	18.4	20.0	18.8	20.2	21.8	21.8	5.0	[4.4; 5.7]
Brussels-Capital Region	10.3	10.5	11.2	12.4	11.7	13.1	12.8	12.7	13.6	12.3	12.6	11.6	14.7	11.5	11.5	1.5	[0.5; 2.5]
Flemish Region	10.8	11.1	12.3	13.0	12.0	14.8	14.9	14.5	14.2	17.2	19.9	20.9	20.3	20.8	23.7	5.6	[4.7; 6.6]
Walloon Region	12.9	13.5	11.8	12.4	15.0	14.5	19.4	18.0	17.1	17.6	20.8	18.7	21.2	22.0	22.0	4.7	[3.4; 6.1]

WSR=Age-Standardised Rate, using the World Standard Population (N/100,000 person-years)

AAPC = Average Annual Percentage Change over the 2004-2017 period (except for the Flemish region : 2003-2017).

Figure 4: Malignant Melanoma: Age-standardised incidence rates (WSR) by incidence year, sex and region



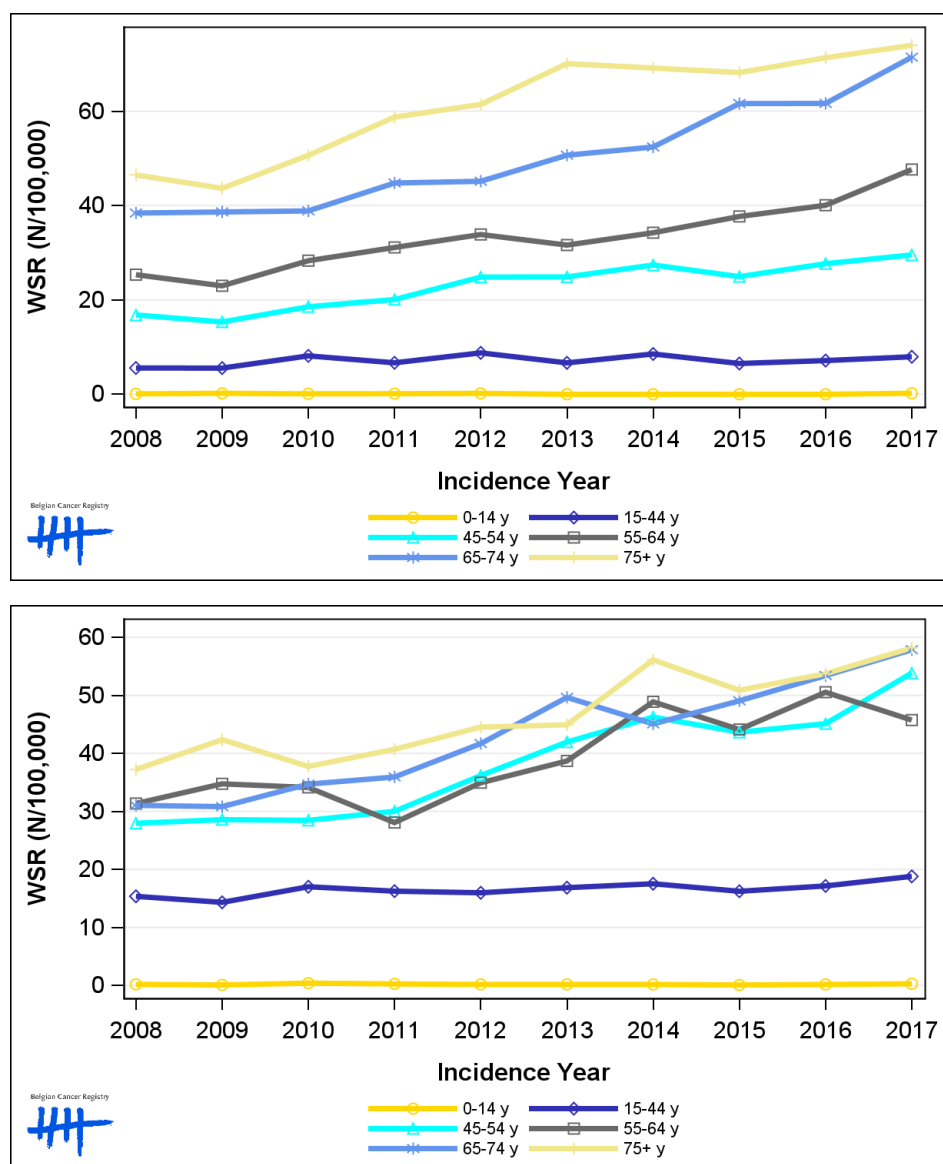
1.5. Incidence by broad age groups

Table 5: Malignant Melanoma: Number of new diagnoses and age-standardised incidence rates (WSR) by broad age groups and incidence year by sex, Belgium

	N										WSR									
	2008	2009	2010	2011	2012	2013	2014	2015	2016	2017	2008	2009	2010	2011	2012	2013	2014	2015	2016	2017
Males																				
All ages	748	723	881	937	1,082	1,085	1,184	1,196	1,278	1,445	9.2	8.8	10.8	11.0	12.8	12.1	13.4	13.0	13.8	15.6
0-14 y	1	2	1	1	2	0	0	0	0	2	<0.1	0.2	<0.1	0.1	0.2	0.0	0.0	0.0	0.0	0.2
15-44 y	144	135	197	165	222	164	211	162	176	198	5.6	5.6	8.1	6.7	8.8	6.7	8.5	6.5	7.1	7.9
45-54 y	131	121	148	163	203	206	224	205	225	238	16.8	15.3	18.5	20.1	24.8	24.9	27.4	24.9	27.7	29.5
55-64 y	157	147	185	207	226	215	235	262	282	343	25.3	23.0	28.3	31.1	33.9	31.6	34.2	37.7	40.1	47.6
65-74 y	162	168	171	194	205	235	249	300	310	372	38.4	38.6	38.9	44.8	45.1	50.7	52.4	61.6	61.7	71.4
75+ y	153	150	179	207	224	265	265	267	285	292	46.5	43.7	50.7	58.8	61.4	70.1	69.1	68.2	71.3	74.0
Females																				
All ages	1,153	1,190	1,247	1,252	1,396	1,548	1,720	1,631	1,784	1,916	14.6	14.5	15.8	15.2	16.7	18.4	20.0	18.8	20.2	21.8
0-14 y	2	1	4	3	2	2	2	1	2	3	0.2	0.1	0.4	0.3	0.2	0.2	0.2	0.1	0.2	0.3
15-44 y	371	343	399	391	386	413	430	390	419	454	15.4	14.3	17.0	16.3	16.0	16.9	17.5	16.2	17.2	18.8
45-54 y	213	222	223	239	289	337	368	351	358	428	28.0	28.6	28.5	30.0	36.2	42.0	46.3	43.6	45.1	53.8
55-64 y	199	226	227	191	241	269	342	315	365	337	31.4	34.8	34.1	28.1	34.9	38.7	48.9	44.1	50.5	45.7
65-74 y	156	152	171	177	210	259	237	265	295	331	31.0	30.8	34.7	35.9	41.7	49.6	45.1	49.1	53.4	57.9
75+ y	212	246	223	251	268	268	341	309	345	363	37.2	42.4	37.8	40.7	44.5	44.9	56.1	50.9	53.7	58.2

N=Number of invasive tumours
WSR=Age-Standardised Rate, using the World Standard Population (N/100,000 person-years)

Figure 5: Malignant Melanoma: Age-standardised incidence rates (WSR) versus incidence year by broad age groups for males (top) and females (bottom), Belgium



2. Relative survival

Table 6: Malignant Melanoma: 5-year relative survival proportion by sex, age group and region, Belgium 2013-2017

	5-year relative survival 2013-2017 (%)					
	Males			Females		
	N at risk	estimate	95% CI	N at risk	estimate	95% CI
Overall	6,056	91.9	[90.5, 93.3]	8,457	95.4	[94.5, 96.4]
Age group						
15-34 years	326	97.0	[94.2, 98.6]	831	97.7	[96.0, 98.7]
35-64 years	2,953	91.8	[90.3, 93.1]	4,656	97.5	[96.8, 98.2]
65+ years	2,777	91.4	[88.5, 94.4]	2,971	90.9	[88.3, 93.6]
Region						
Brussels-Capital Region	453	92.4	[86.3, 97.6]	553	94.8	[90.0, 98.8]
Flemish Region	3,691	90.6	[88.8, 92.4]	5,294	95.1	[93.9, 96.3]
Walloon Region	1,913	94.5	[91.9, 96.9]	2,610	96.2	[94.4, 97.8]

Figure 6: Malignant Melanoma: relative survival proportion by sex, Belgium 2013-2017

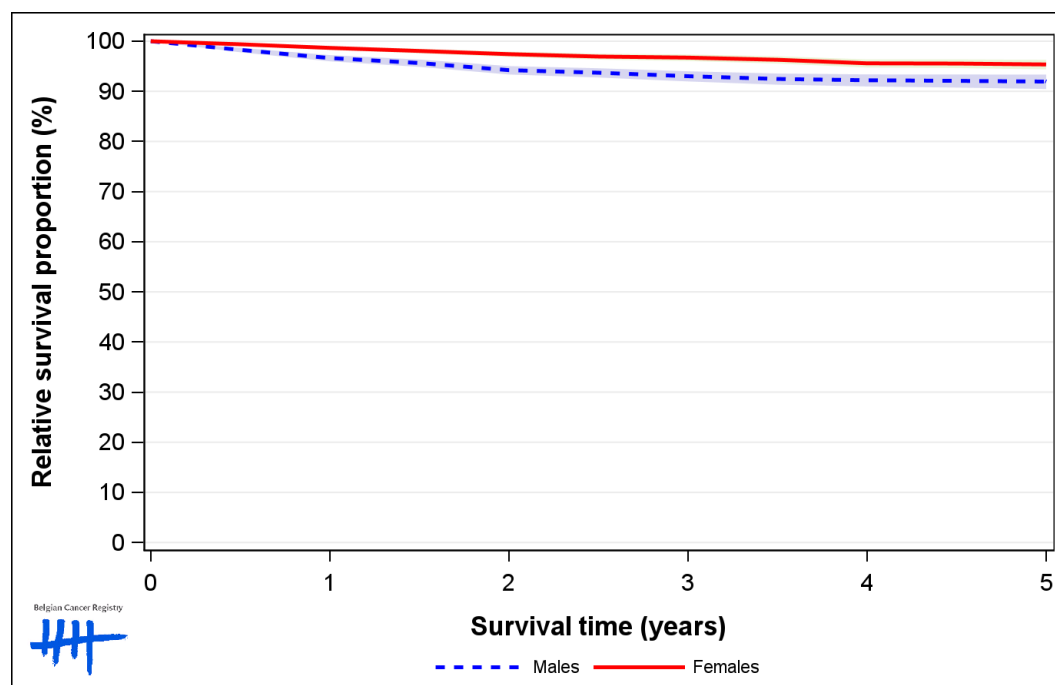


Figure 7: Malignant Melanoma: relative survival proportion by age group in males, Belgium 2013-2017

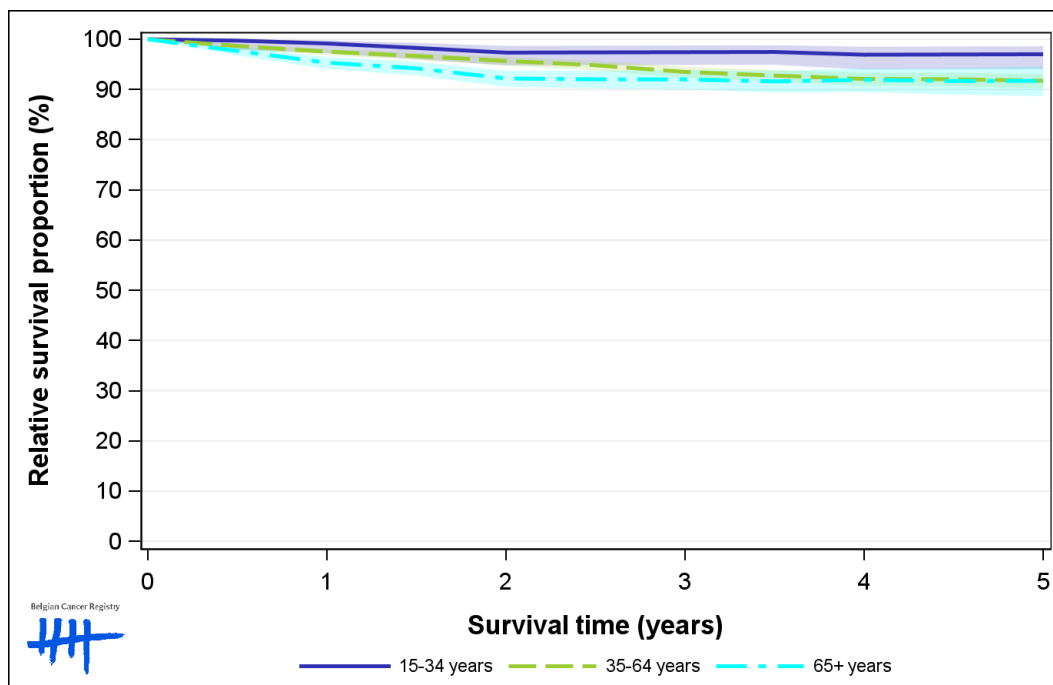


Figure 8: Malignant Melanoma: relative survival proportion by age group in females, Belgium 2013-2017

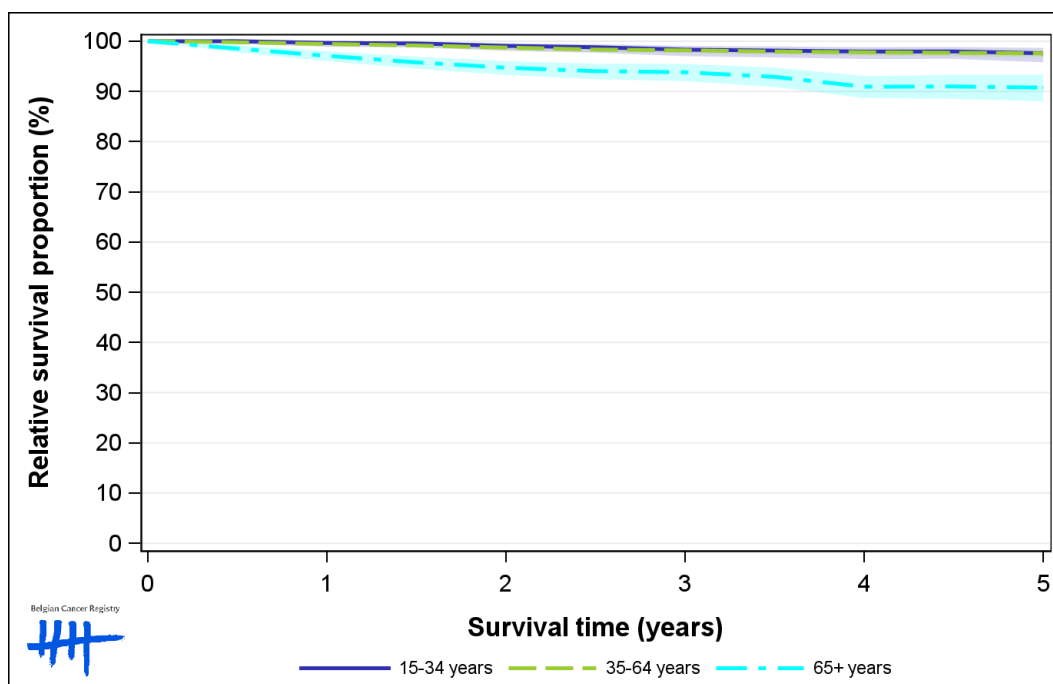


Figure 9: Malignant Melanoma: relative survival proportion by region in males, Belgium 2013-2017

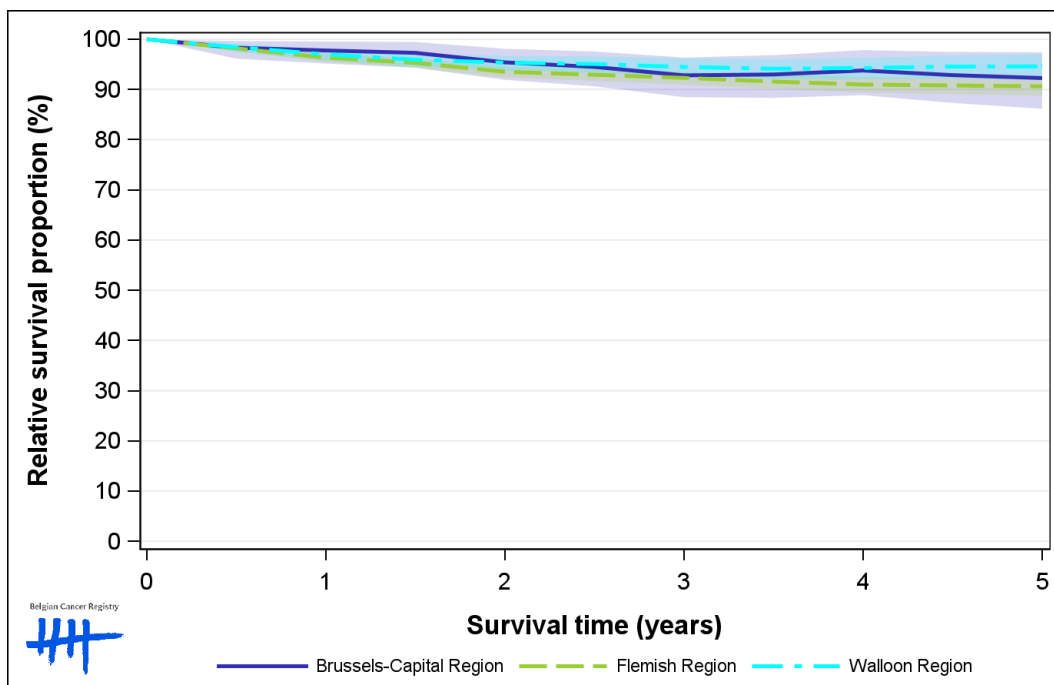


Figure 10: Malignant Melanoma: relative survival proportion by region in females, Belgium 2013-2017

