

Belgian Cancer Registry



Cancer Fact Sheet

Lymphoid Malignancies

Belgium 2017

1. Cancer Incidence

1.1. Number of new diagnoses and incidence rates

Table 1: Lymphoid Malignancies: Average age at diagnosis, number of new cancer diagnoses (N), crude rate (CR), age-standardised incidence rates (ESR and WSR) and cumulative risk by sex and region, 2017

Males	Age (years)	N	CR	ESR	WSR	CRi
Belgium	64.1	2,650	47.6	37.0	27.5	2.87
Brussels-Capital Region	61.5	231	39.7	39.6	29.3	3.01
Flemish Region	64.8	1,519	47.2	34.6	25.8	2.69
Walloon Region	63.7	900	51.0	41.1	30.2	3.18

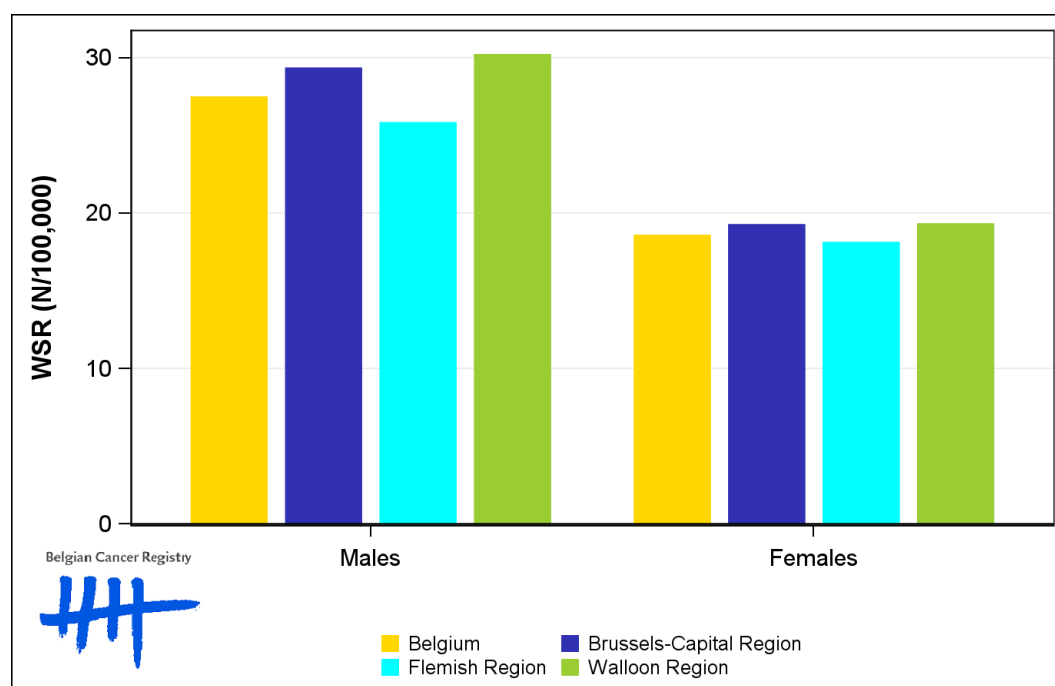
Females	Age (years)	N	CR	ESR	WSR	CRi
Belgium	66.1	2,048	35.6	24.7	18.6	2.00
Brussels-Capital Region	64.9	187	30.7	25.8	19.2	2.14
Flemish Region	67.0	1,207	36.6	24.1	18.1	1.94
Walloon Region	64.6	654	35.3	25.5	19.3	2.08

CR=Crude (all ages) Rate (N/100,000 person-years)
 ESR=Age-Standardised Rate, using the European Standard Population (N/100,000 person-years)
 WSR=Age-Standardised Rate, using the World Standard Population (N/100,000 person-years)
 CRi=Cumulative Risk for 0-74 years (%)

Belgian Cancer Registry



Figure 1: Lymphoid Malignancies: Age-standardised incidence rates by sex and region, 2017



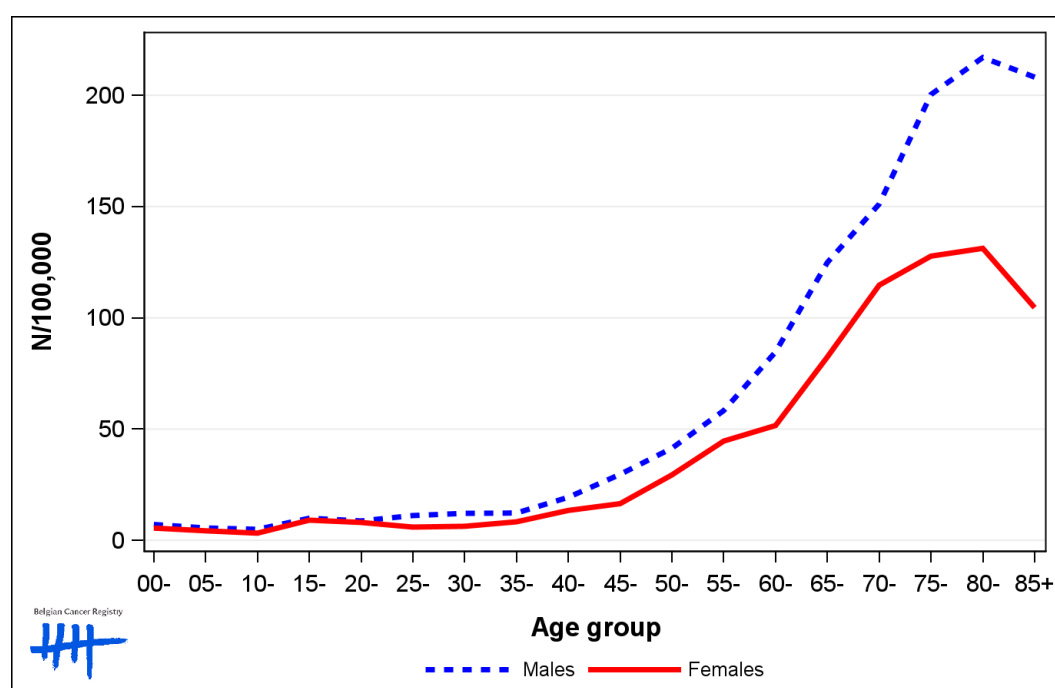
1.2. Age-specific incidence rates

Table 2: Lymphoid Malignancies: Age-specific incidence rates, crude rate (CR) and age-standardised incidence rates (ESR and WSR) by sex, Belgium 2017

	00-	05-	10-	15-	20-	25-	30-	35-	40-	45-	50-	55-	60-	65-	70-	75-	80-	85+	CR	ESR	WSR
Males	7.1	5.6	5.0	10.0	8.8	11.2	12.2	12.3	19.4	29.7	41.4	58.3	84.7	124.9	151.1	200.4	217.0	208.2	47.6	37.0	27.5
Females	5.5	4.3	3.3	9.1	8.1	6.0	6.3	8.4	13.5	16.5	29.4	44.6	51.6	82.4	114.7	127.7	131.2	104.6	35.6	24.7	18.6

CR=Crude (all ages) Rate (N/100,000 person-years)
 ESR=Age-Standardised Rate, using the European Standard Population (N/100,000 person-years)
 WSR=Age-Standardised Rate, using the World Standard Population (N/100,000 person-years)

Figure 2: Lymphoid Malignancies: Age-specific incidence rates by sex, 2017



1.3. Trends in incidence

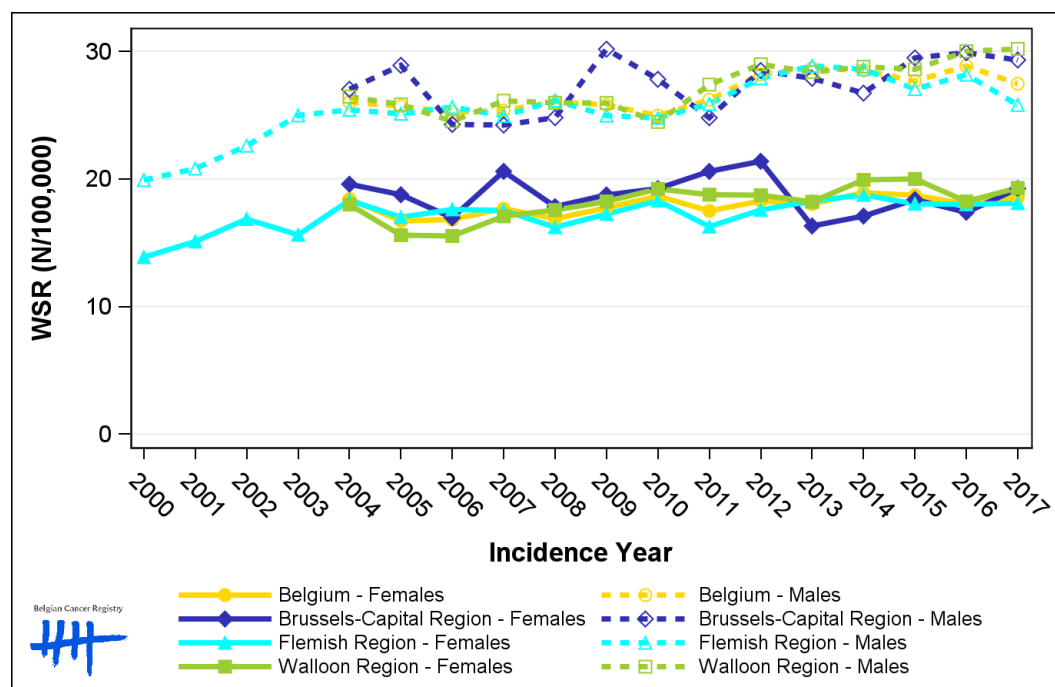
Table 3: Lymphoid Malignancies: Age-standardised incidence rates (WSR) and average annual percentage change (AAPC) by incidence year, sex and region

Males	2003	2004	2005	2006	2007	2008	2009	2010	2011	2012	2013	2014	2015	2016	2017	AAPC	95% CI
Belgium	26.0	25.7	25.2	25.4	26.0	25.8	25.0	26.2	28.2	28.7	28.5	27.7	28.9	27.5	0.9	[0.4; 1.4]	
Brussels-Capital Region	27.0	28.9	24.3	24.2	24.8	30.2	27.8	24.8	28.5	27.9	26.7	29.5	29.9	29.3	0.9	[-0.1; 2.0]	
Flemish Region	25.0	25.4	25.1	25.6	24.9	26.1	25.0	24.8	25.9	27.9	28.9	28.6	27.0	28.2	25.8	0.7	[0.1; 1.4]
Walloon Region	26.4	25.8	24.5	26.1	26.0	26.0	24.5	27.4	29.0	28.4	28.8	28.6	30.0	30.2	1.4	[0.9; 1.9]	

Females	2003	2004	2005	2006	2007	2008	2009	2010	2011	2012	2013	2014	2015	2016	2017	AAPC	95% CI
Belgium	18.4	16.7	16.8	17.7	16.9	17.7	18.7	17.5	18.3	18.0	18.9	18.7	18.0	18.6	0.6	[0.1; 1.1]	
Brussels-Capital Region	19.6	18.8	17.0	20.6	17.8	18.7	19.2	20.6	21.4	16.3	17.1	18.4	17.4	19.2	-0.4	[-1.5; 0.8]	
Flemish Region	15.6	18.3	17.0	17.6	17.5	16.2	17.3	18.3	16.3	17.6	18.3	18.7	18.1	18.0	18.1	0.6	[0.0; 1.2]
Walloon Region	18.0	15.6	15.5	17.1	17.6	18.2	19.2	18.8	18.7	18.2	19.9	20.0	18.2	19.3	1.4	[0.6; 2.2]	

WSR=Age-Standardised Rate, using the World Standard Population (N/100,000 person-years)
 AAPC = Average Annual Percentage Change over the 2004-2017 period (except for the Flemish region : 2003-2017).

Figure 3: Lymphoid Malignancies: Age-standardised incidence rates (WSR) by incidence year, sex and region



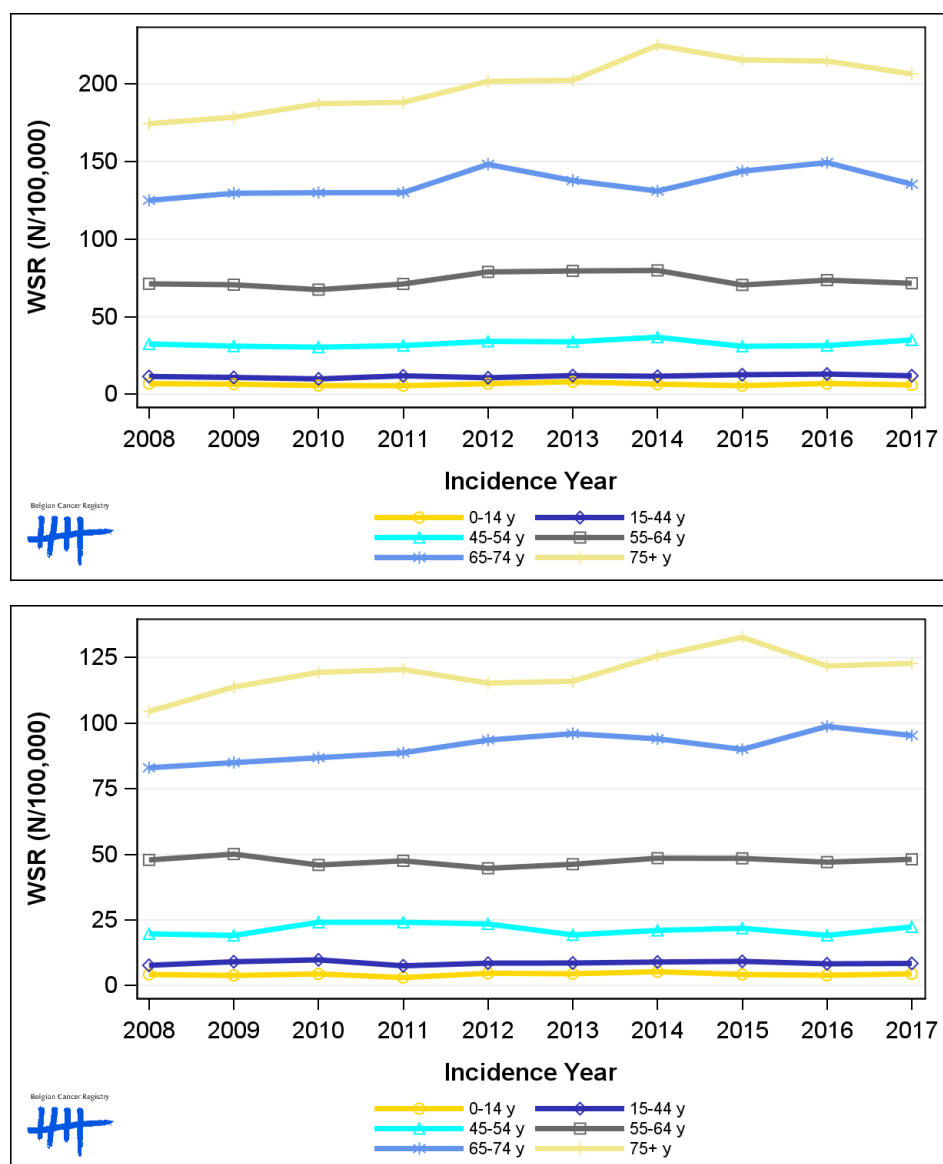
1.4. Incidence by broad age groups

Table 4: Lymphoid Malignancies: Number of new diagnoses and age-standardised incidence rates (WSR) by broad age groups and incidence year by sex, Belgium

	N											WSR									
	2008	2009	2010	2011	2012	2013	2014	2015	2016	2017	2008	2009	2010	2011	2012	2013	2014	2015	2016	2017	
Males																					
All ages	2,143	2,178	2,198	2,302	2,536	2,567	2,669	2,621	2,748	2,650	26.0	25.8	25.0	26.2	28.2	28.7	28.5	27.7	28.9	27.5	
0-14 y	63	60	53	53	64	75	62	55	66	58	6.8	6.5	5.6	5.5	6.9	8.1	6.5	5.5	6.9	6.0	
15-44 y	257	242	228	269	237	266	265	281	287	265	11.5	10.9	9.9	11.9	10.7	12.0	11.6	12.6	13.0	11.9	
45-54 y	254	246	244	257	283	281	306	254	260	289	32.4	31.0	30.4	31.4	34.1	33.8	36.8	30.9	31.4	35.0	
55-64 y	442	445	439	473	527	535	546	489	516	511	71.2	70.6	67.4	71.1	78.9	79.5	79.8	70.4	73.6	71.5	
65-74 y	541	567	572	570	671	639	623	701	753	707	125.0	129.6	129.9	130.0	148.2	137.8	131.0	143.8	149.3	135.4	
75+ y	586	618	662	680	754	771	867	841	866	820	174.4	178.6	187.3	188.2	201.7	202.4	224.9	215.5	214.8	206.5	
Females																					
All ages	1,674	1,783	1,881	1,857	1,896	1,907	2,018	2,044	1,997	2,048	16.9	17.7	18.7	17.5	18.3	18.0	18.9	18.7	18.0	18.6	
0-14 y	38	34	39	27	42	41	48	38	37	41	4.2	3.9	4.4	3.1	4.7	4.5	5.3	4.2	3.9	4.5	
15-44 y	169	189	216	161	187	190	195	195	177	180	7.7	9.1	9.8	7.5	8.5	8.6	9.0	9.2	8.3	8.5	
45-54 y	153	152	192	195	191	159	171	180	156	183	19.7	19.1	24.1	24.1	23.5	19.3	21.0	21.8	19.2	22.4	
55-64 y	305	324	304	322	306	320	339	342	340	353	47.9	50.1	46.0	47.5	44.7	46.2	48.6	48.5	47.0	48.1	
65-74 y	412	429	428	440	481	503	498	485	548	551	83.0	85.0	86.8	88.7	93.6	96.0	94.1	90.0	98.8	95.3	
75+ y	597	655	702	712	689	694	767	804	739	740	104.5	113.8	119.4	120.5	115.3	116.0	125.7	132.8	121.8	122.8	

N=Number of invasive tumours
WSR=Age-Standardised Rate, using the World Standard Population (N/100,000 person-years)

Figure 4: Lymphoid Malignancies: Age-standardised incidence rates (WSR) versus incidence year by broad age groups for males (top) and females (bottom), Belgium



2. Relative survival

Table 5: Lymphoid Malignancies: 5-year relative survival proportion by sex, age group and region, Belgium 2013-2017

	5-year relative survival 2013-2017 (%)					
	Males			Females		
	N at risk	estimate	95% CI	N at risk	estimate	95% CI
Overall	12,806	74.9	[73.8, 76.2]	9,752	74.8	[73.5, 76.1]
Age group						
15-59 years	3,855	87.8	[86.5, 89.1]	2,563	89.8	[88.3, 91.3]
60-74 years	4,823	77.0	[75.2, 78.8]	3,460	78.2	[76.3, 80.1]
75+ years	4,132	57.3	[54.4, 60.4]	3,732	59.3	[56.6, 62.2]
Region						
Brussels-Capital Region	1,013	76.6	[72.3, 80.6]	802	78.7	[74.1, 83.1]
Flemish Region	7,695	74.6	[73.1, 76.2]	5,718	74.1	[72.5, 75.8]
Walloon Region	4,098	75.1	[73.0, 77.3]	3,232	75.0	[72.7, 77.3]

Figure 5: Lymphoid Malignancies: relative survival proportion by sex, Belgium 2013-2017

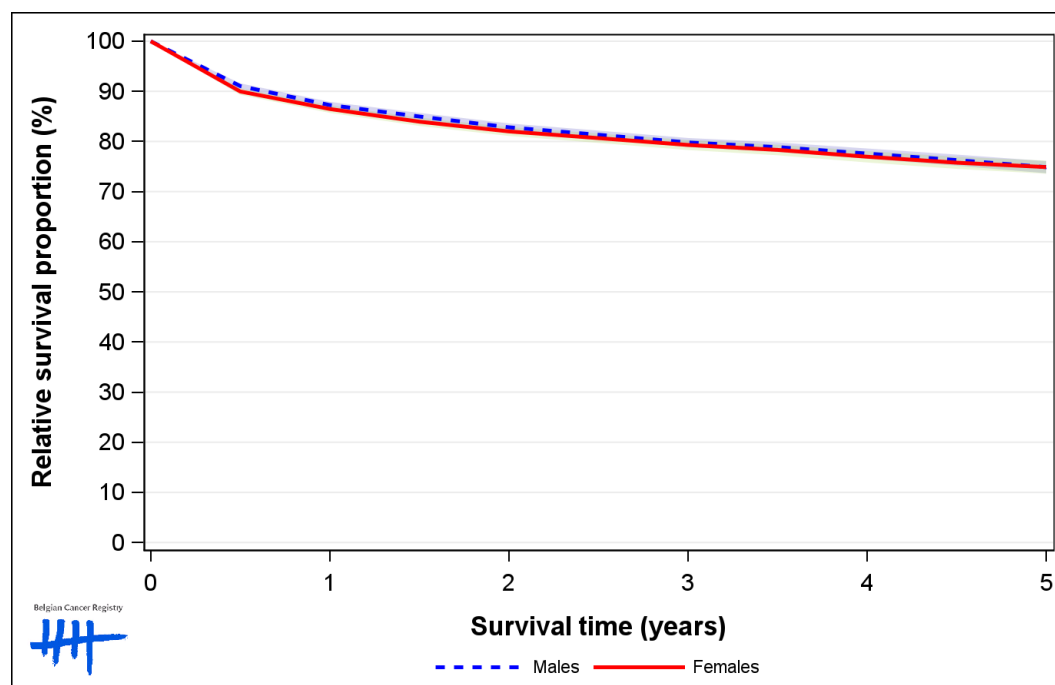


Figure 6: Lymphoid Malignancies: relative survival proportion by age group in males, Belgium 2013-2017

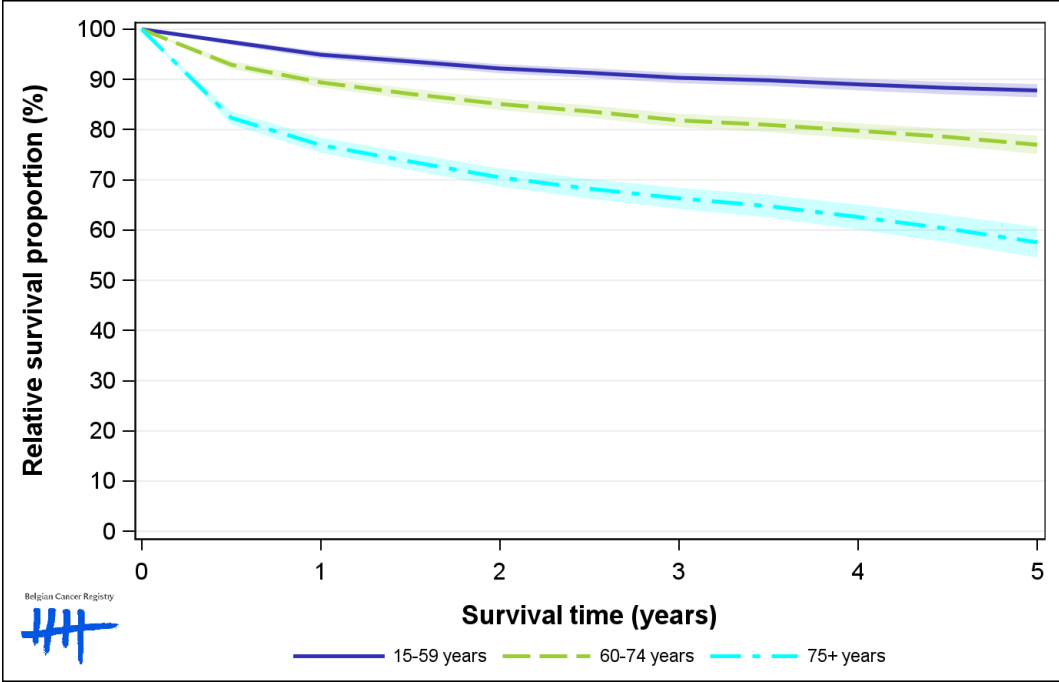


Figure 7: Lymphoid Malignancies: relative survival proportion by age group in females, Belgium 2013-2017

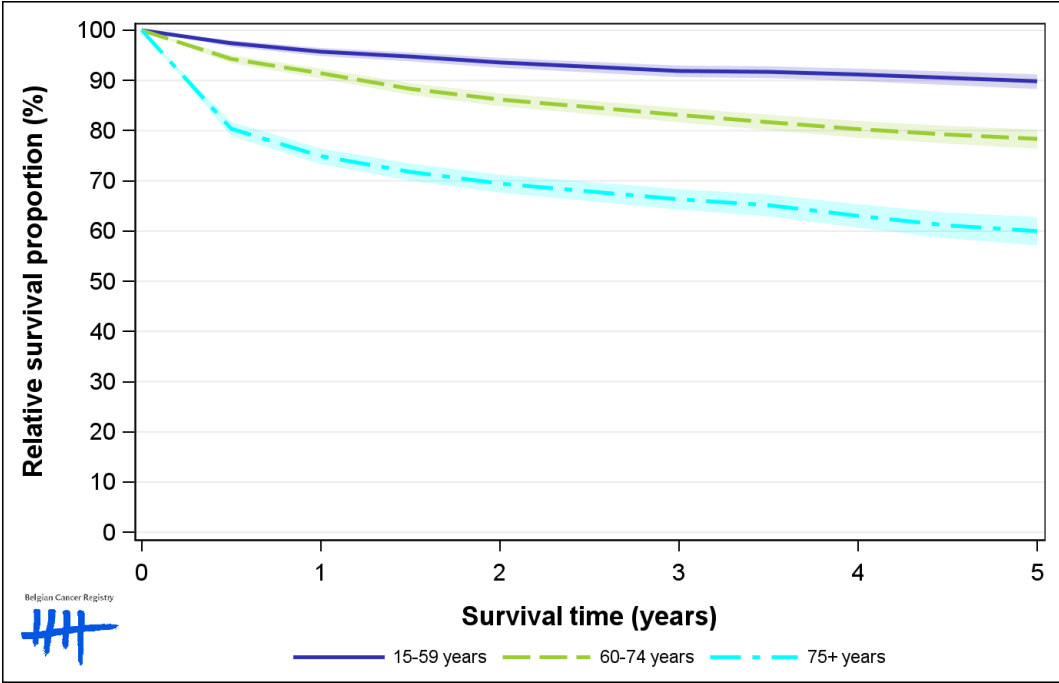


Figure 8: Lymphoid Malignancies: relative survival proportion by region in males, Belgium 2013-2017

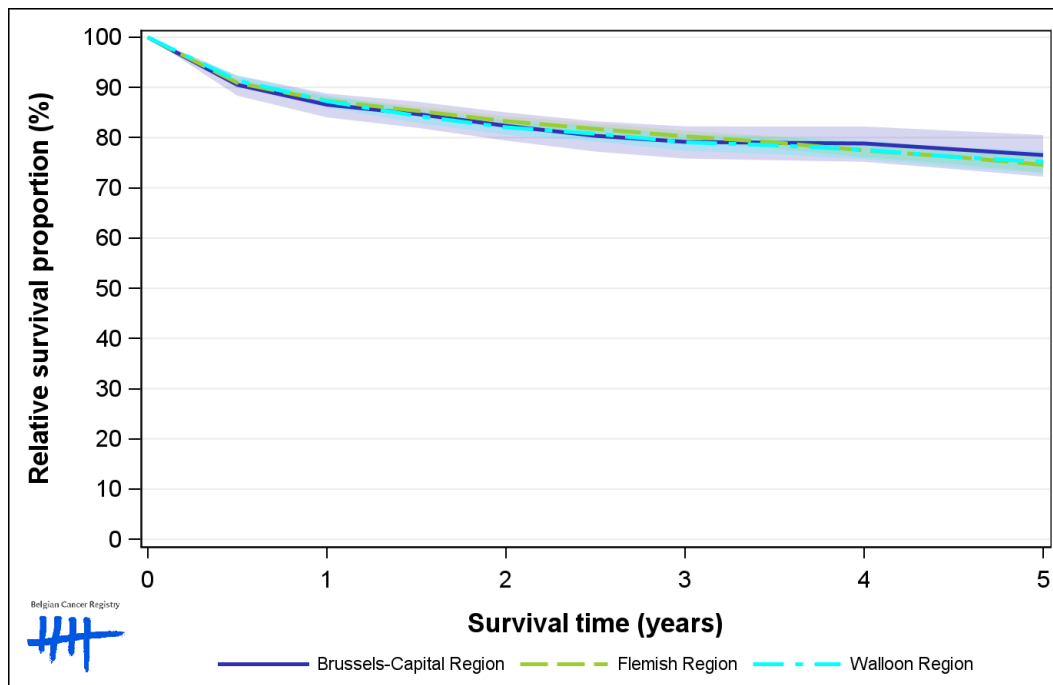


Figure 9: Lymphoid Malignancies: relative survival proportion by region in females, Belgium 2013-2017

