

Belgian Cancer Registry



Cancer Fact Sheet

ICD10 : C23-24

Gallbladder &
biliary tract Cancer

Belgium 2017

1. Cancer Incidence

1.1. Number of new diagnoses and incidence rates

Table 1: Gallbladder and Biliary Tract Cancers: Average age at diagnosis, number of new cancer diagnoses (N), crude rate (CR), age-standardised incidence rates (ESR and WSR) and cumulative risk by sex and region, 2017

Males	Age (years)	N	CR	ESR	WSR	CRi
Belgium	71.2	222	4.0	2.8	1.8	0.23
Brussels-Capital Region	69.7	18	3.1	3.2	2.1	0.30
Flemish Region	71.7	128	4.0	2.6	1.7	0.21
Walloon Region	70.7	76	4.3	3.2	2.1	0.26

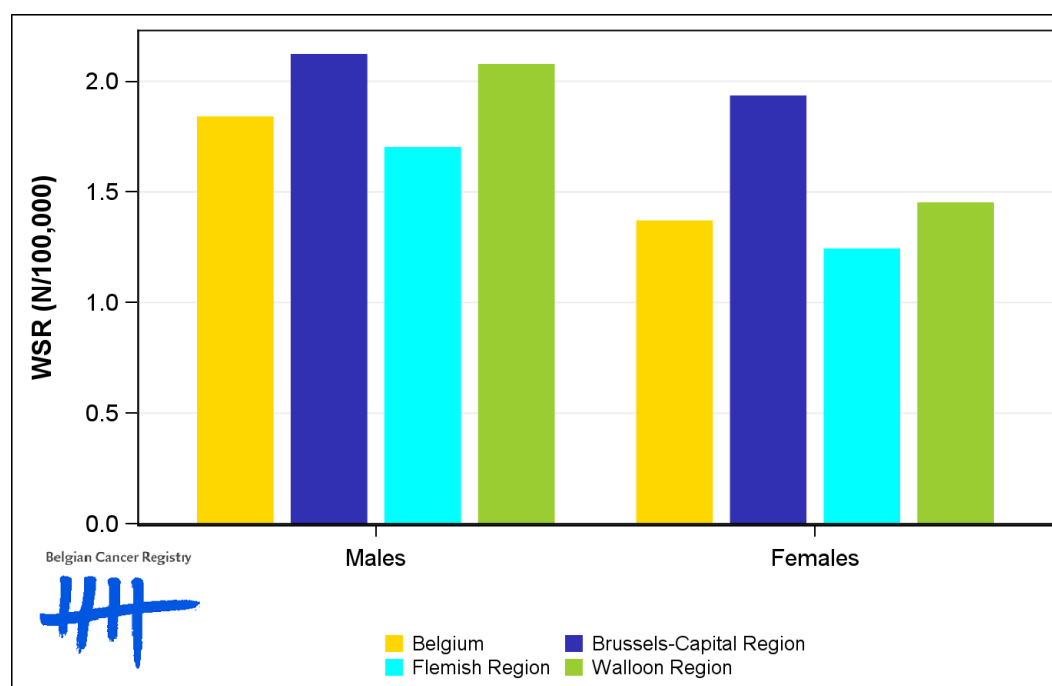
Females	Age (years)	N	CR	ESR	WSR	CRi
Belgium	73.3	202	3.5	2.0	1.4	0.15
Brussels-Capital Region	66.8	18	3.0	2.7	1.9	0.23
Flemish Region	73.8	113	3.4	1.9	1.2	0.14
Walloon Region	74.2	71	3.8	2.2	1.4	0.15

CR=Crude (all ages) Rate (N/100,000 person-years)
 ESR=Age-Standardised Rate, using the European Standard Population (N/100,000 person-years)
 WSR=Age-Standardised Rate, using the World Standard Population (N/100,000 person-years)
 CRi=Cumulative Risk for 0-74 years (%)

Belgian Cancer Registry



Figure 1: Gallbladder and Biliary Tract Cancers: Age-standardised incidence rates by sex and region, 2017



1.2. Age-specific incidence rates

Table 2: Gallbladder and Biliary Tract Cancers: Age-specific incidence rates, crude rate (CR) and age-standardised incidence rates (ESR and WSR) by sex, Belgium 2017

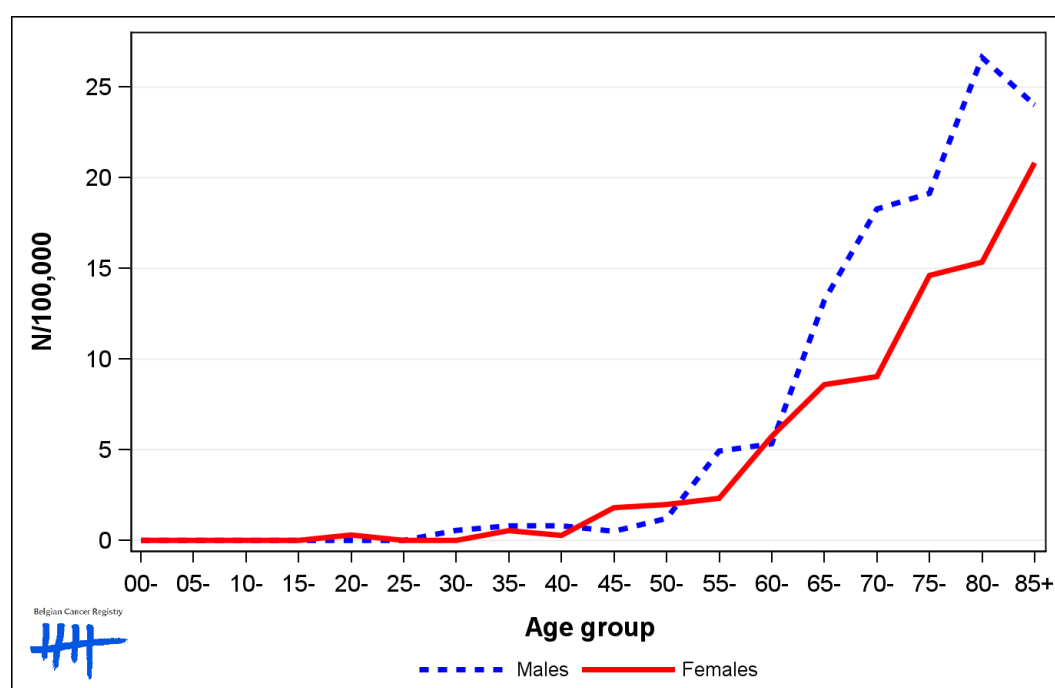
	00-	05-	10-	15-	20-	25-	30-	35-	40-	45-	50-	55-	60-	65-	70-	75-	80-	85+	CR	ESR	WSR
Males	0.0	0.0	0.0	0.0	0.0	0.0	0.6	0.8	0.8	0.5	1.2	4.9	5.3	13.2	18.3	19.1	26.6	24.0	4.0	2.8	1.8
Females	0.0	0.0	0.0	0.0	0.3	0.0	0.0	0.5	0.3	1.8	2.0	2.3	5.7	8.6	9.0	14.6	15.3	20.8	3.5	2.0	1.4

CR=Crude (all ages) Rate (N/100,000 person-years)

ESR=Age-Standardised Rate, using the European Standard Population (N/100,000 person-years)

WSR=Age-Standardised Rate, using the World Standard Population (N/100,000 person-years)

Figure 2: Gallbladder and Biliary Tract Cancers: Age-specific incidence rates by sex, 2017



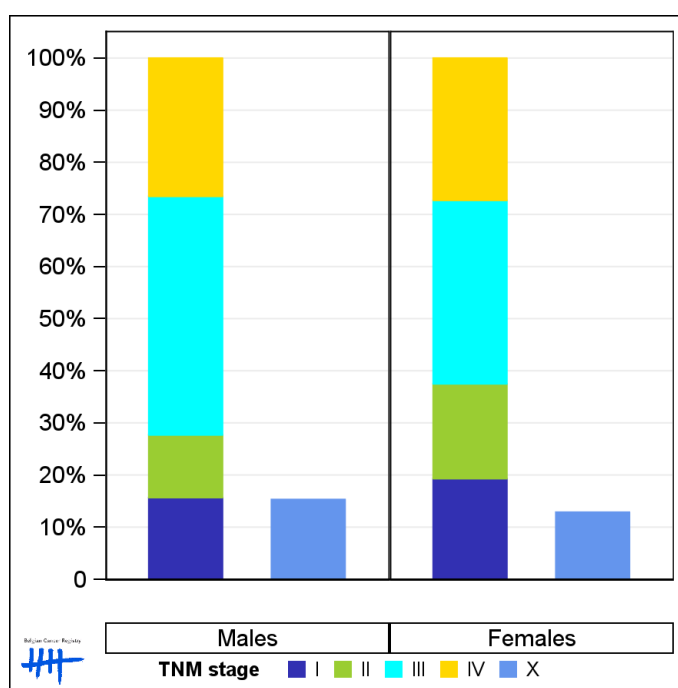
1.3. Combined stage

Table 3: Gallbladder and Biliary Tract Cancers: Distribution of combined stage by sex, Belgium 2017

	Stage I	Stage II	Stage III	Stage IV	Stage X	Stage NA	Total
Males							
N	13	10	38	22	15	124	222
%	5.9	4.5	17.1	9.9	6.8	55.9	100
Females							
N	17	16	31	24	13	101	202
%	8.4	7.9	15.3	11.9	6.4	50.0	100

Staging according to the TNM 8th edition (Ref: Brierley JD, Gospodarowicz MK, Wittekind Ch. TNM classification of malignant tumours, UICC 8th edition)
 Combined TNM stage : compilation of pathological (pTNM) and clinical (cTNM) stage. pTNM prevails over cTNM, except when cTNM stage is IV
 Stage X: diagnoses with an unknown stage
 Stage NA: diagnoses with a histological diagnosis where no stage can be evaluated (Not Applicable)

Figure 3: Gallbladder and Biliary Tract Cancers: Bar chart of known combined stage by sex, Belgium 2017



1.4. Trends in incidence

Table 4: Gallbladder and Biliary Tract Cancers: Age-standardised incidence rates (WSR) and average annual percentage change (AAPC) by incidence year, sex and region

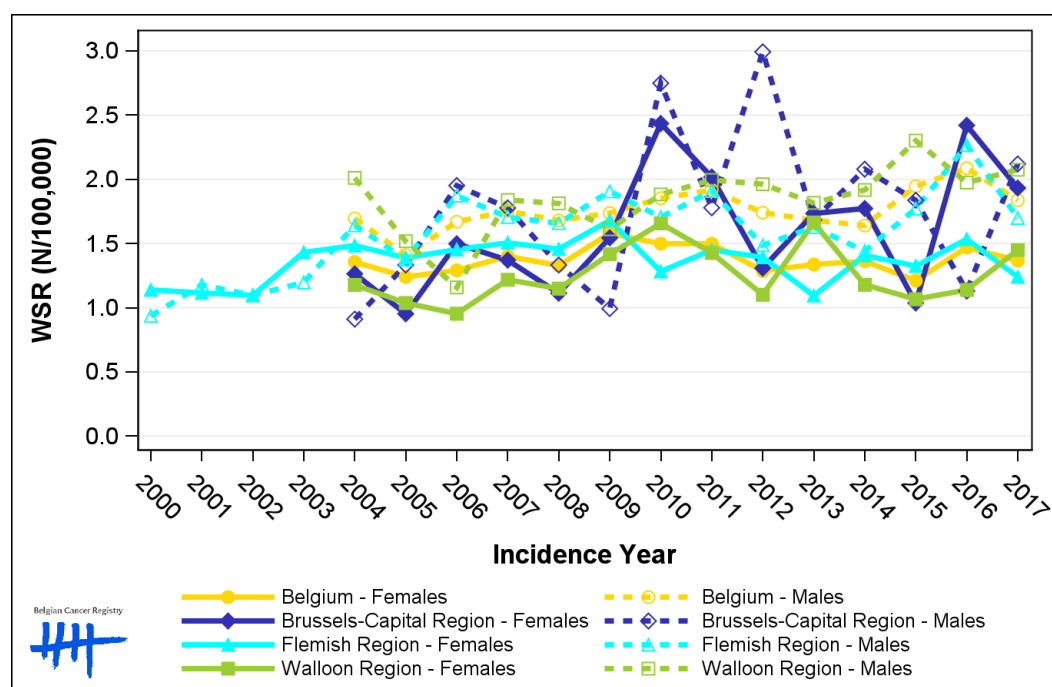
Males	2003	2004	2005	2006	2007	2008	2009	2010	2011	2012	2013	2014	2015	2016	2017	AAPC	95% CI
Belgium	1.7	1.4	1.7	1.8	1.7	1.7	1.7	1.9	1.9	1.7	1.7	1.6	1.9	2.1	1.8	1.4	[0.3; 2.5]
Brussels-Capital Region	0.9	1.3	2.0	1.8	1.3	1.0	2.7	1.8	3.0	1.7	2.1	1.8	1.1	2.1	3.1	3.1	[-1.9; 8.3]
Flemish Region	1.2	1.6	1.4	1.9	1.7	1.7	1.9	1.7	1.9	1.5	1.6	1.4	1.8	2.3	1.7	1.5	[-0.3; 3.4]
Walloon Region	2.0	1.5	1.2	1.8	1.8	1.6	1.9	2.0	2.0	1.8	1.9	2.3	2.0	2.1	2.3	2.3	[0.3; 4.4]

Females	2003	2004	2005	2006	2007	2008	2009	2010	2011	2012	2013	2014	2015	2016	2017	AAPC	95% CI
Belgium	1.4	1.2	1.3	1.4	1.3	1.6	1.5	1.5	1.3	1.3	1.4	1.2	1.5	1.4	1.4	0.1	[-1.0; 1.3]
Brussels-Capital Region	1.3	1.0	1.5	1.4	1.1	1.5	2.4	2.0	1.3	1.7	1.8	1.0	2.4	1.9	1.9	3.5	[-0.4; 7.6]
Flemish Region	1.4	1.5	1.4	1.5	1.5	1.5	1.7	1.3	1.5	1.4	1.1	1.4	1.3	1.5	1.2	-0.8	[-2.1; 0.4]
Walloon Region	1.2	1.0	1.0	1.2	1.1	1.4	1.7	1.4	1.4	1.1	1.7	1.2	1.1	1.1	1.4	1.3	[-0.9; 3.7]

WSR=Age-Standardised Rate, using the World Standard Population (N/100,000 person-years)

AAPC = Average Annual Percentage Change over the 2004-2017 period (except for the Flemish region : 2003-2017).

Figure 4: Gallbladder and Biliary Tract Cancers: Age-standardised incidence rates (WSR) by incidence year, sex and region



1.5. Incidence by broad age groups

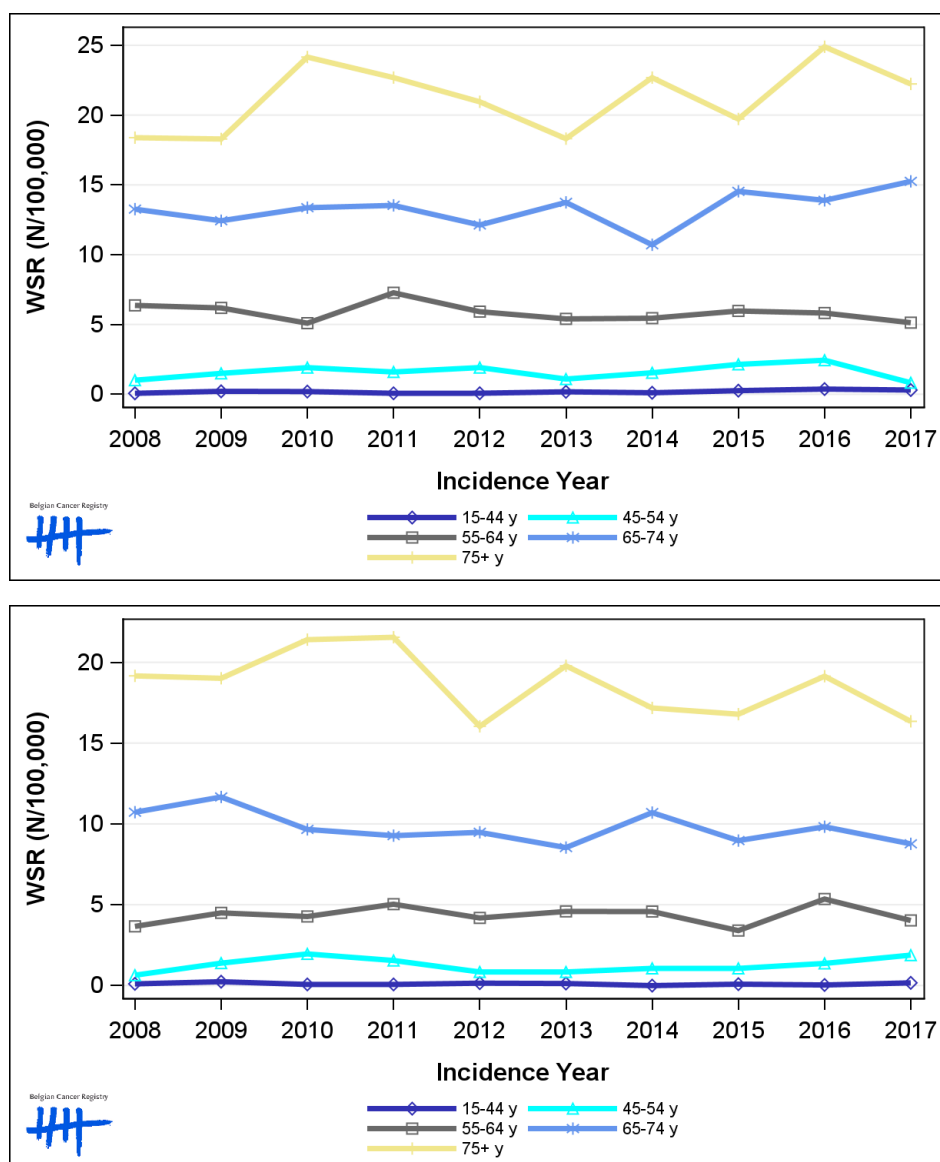
Table 5: Gallbladder and Biliary Tract Cancers: Number of new diagnoses and age-standardised incidence rates (WSR) by broad age groups and incidence year by sex, Belgium

	N											WSR										
	2008	2009	2010	2011	2012	2013	2014	2015	2016	2017	2008	2009	2010	2011	2012	2013	2014	2015	2016	2017		
Males																						
All ages	165	175	195	204	193	183	194	216	240	222	1.7	1.7	1.9	1.9	1.7	1.7	1.6	1.9	2.1	1.8		
0-14 y	0	0	0	0	0	0	0	0	0	0	0.0	0.0	0.0	0.0	0.0	0.0	0.0	0.0	0.0	0.0		
15-44 y	2	6	5	2	2	5	3	7	10	8	<0.1	0.2	0.2	<0.1	<0.1	0.2	0.1	0.3	0.4	0.3		
45-54 y	8	12	15	13	16	9	13	18	20	7	1.0	1.5	1.9	1.6	1.9	1.1	1.5	2.1	2.4	0.8		
55-64 y	39	39	33	48	39	36	37	41	41	37	6.4	6.2	5.1	7.3	5.9	5.4	5.4	6.0	5.8	5.1		
65-74 y	55	53	59	61	56	64	51	71	70	80	13.3	12.4	13.4	13.5	12.1	13.7	10.7	14.5	13.9	15.3		
75+ y	61	65	83	80	80	69	90	79	99	90	18.4	18.3	24.2	22.7	21.0	18.3	22.7	19.7	24.9	22.2		
Females																						
All ages	193	215	219	227	187	203	209	193	224	202	1.3	1.6	1.5	1.5	1.3	1.3	1.4	1.2	1.5	1.4		
0-14 y	0	0	0	0	0	0	0	0	0	0	0.0	0.0	0.0	0.0	0.0	0.0	0.0	0.0	0.0	0.0		
15-44 y	3	6	2	2	4	3	0	2	1	4	0.1	0.2	<0.1	<0.1	0.1	0.1	0.0	<0.1	<0.1	0.2		
45-54 y	5	11	16	13	7	7	9	9	11	15	0.6	1.4	2.0	1.6	0.8	0.8	1.1	1.1	1.4	1.9		
55-64 y	23	29	28	34	29	31	32	24	38	29	3.7	4.5	4.3	5.0	4.2	4.6	4.6	3.4	5.4	4.0		
65-74 y	55	58	47	49	49	44	57	48	55	50	10.7	11.7	9.7	9.3	9.5	8.5	10.7	9.0	9.8	8.8		
75+ y	107	111	126	129	98	118	111	110	119	104	19.2	19.0	21.4	21.5	16.0	19.8	17.2	16.8	19.1	16.3		

N=Number of invasive tumours

WSR=Age-Standardised Rate, using the World Standard Population (N/100,000 person-years)

Figure 5: Gallbladder and Biliary Tract Cancers: Age-standardised incidence rates (WSR) versus incidence year by broad age groups for males (top) and females (bottom), Belgium



2. Relative survival

Table 6: Gallbladder and Biliary Tract Cancers: 5-year relative survival proportion by sex, age group and region, Belgium 2013-2017

	5-year relative survival 2013-2017 (%)					
	Males			Females		
	N at risk	estimate	95% CI	N at risk	estimate	95% CI
Overall	1,049	22.4	[19.1, 26.0]	1,023	18.7	[15.9, 21.9]
Age group						
15-59 years	179	31.9	[24.1, 40.2]	112	29.5	[20.1, 39.7]
60-74 years	444	22.2	[17.3, 27.6]	350	23.6	[18.7, 29.0]
75+ years	426	18.3	[13.2, 24.5]	561	13.1	[9.7, 17.4]
Region						
Brussels-Capital Region	74	18.9	[8.9, 32.7]	97	21.3	[12.6, 31.9]
Flemish Region	630	23.0	[18.7, 27.8]	601	17.9	[14.2, 22.0]
Walloon Region	345	22.0	[16.6, 28.3]	325	19.3	[14.4, 25.0]

Figure 6: Gallbladder and Biliary Tract Cancers: relative survival proportion by sex, Belgium 2013-2017

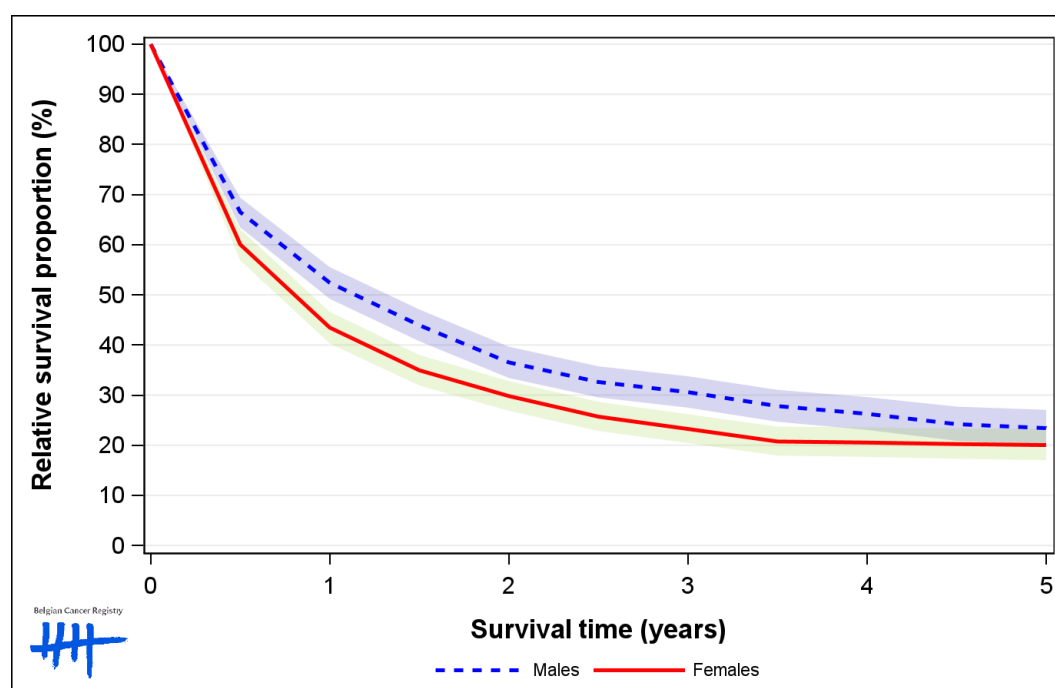


Figure 7: Gallbladder and Biliary Tract Cancers: relative survival proportion by age group in males, Belgium 2013-2017

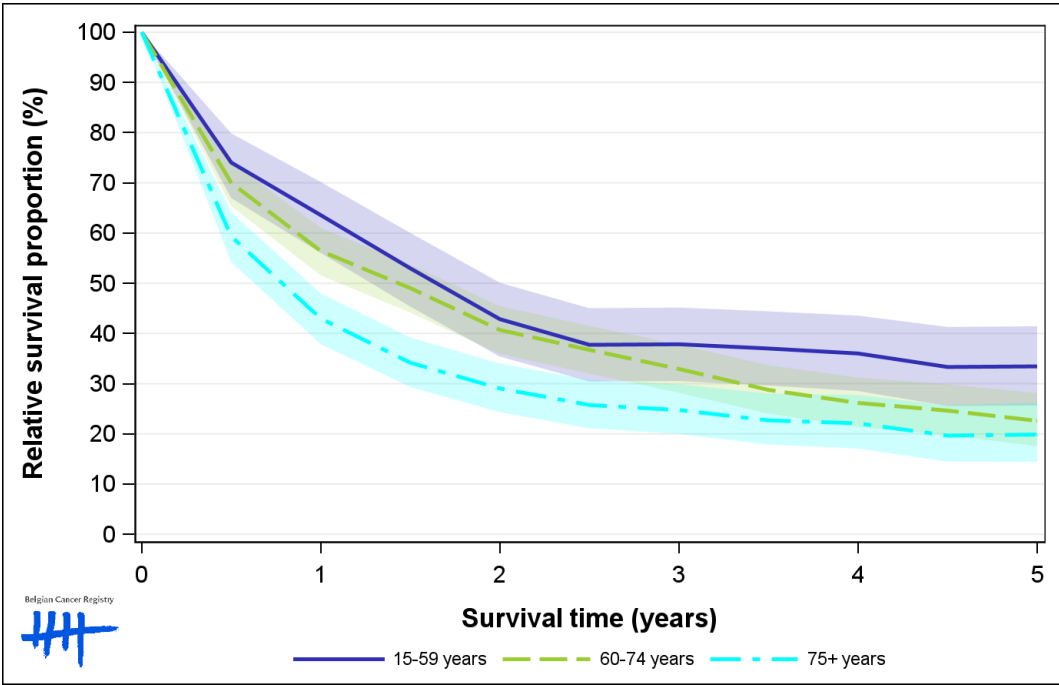


Figure 8: Gallbladder and Biliary Tract Cancers: relative survival proportion by age group in females, Belgium 2013-2017

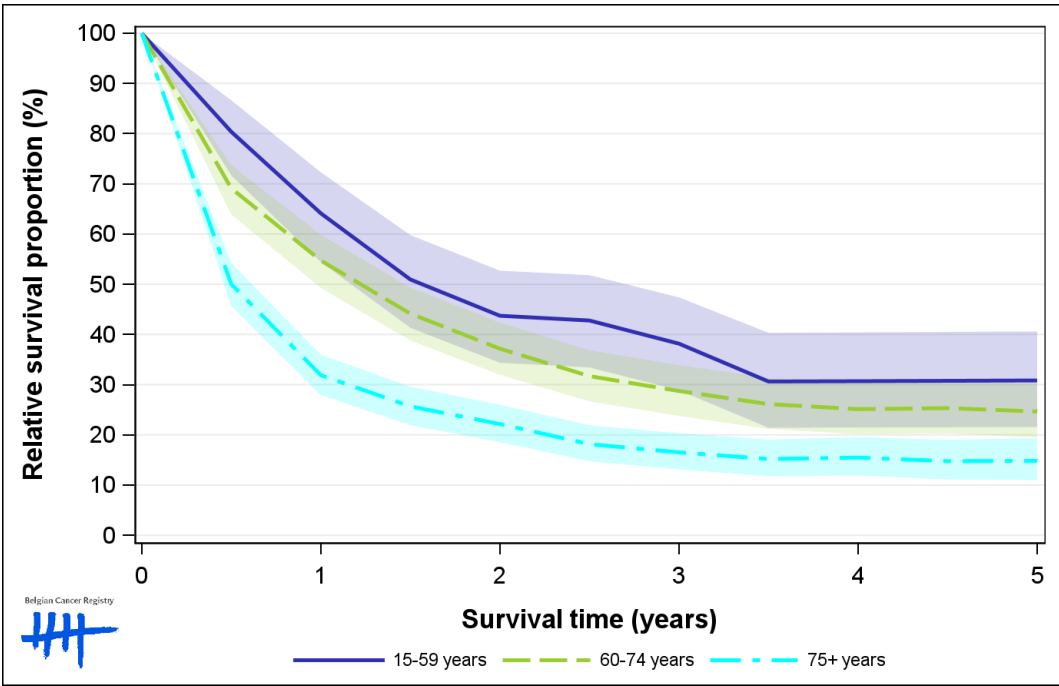


Figure 9: Gallbladder and Biliary Tract Cancers: relative survival proportion by region in males, Belgium 2013-2017

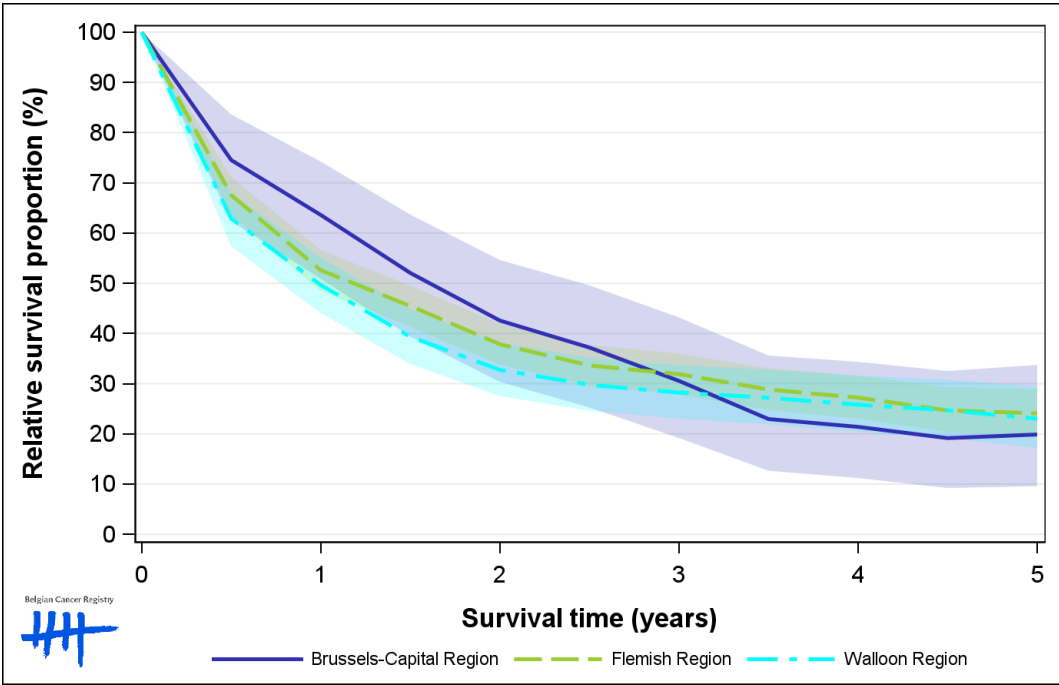


Figure 10: Gallbladder and Biliary Tract Cancers: relative survival proportion by region in females, Belgium 2013-2017

