

Belgian Cancer Registry



Cancer Fact Sheet **Colorectal Cancer**

ICD10 : C18-20

Belgium 2017

1. Cancer Incidence

1.1. Number of new diagnoses and incidence rates

Table 1: Colorectal Cancer: Average age at diagnosis, number of new cancer diagnoses (N), crude rate (CR), age-standardised incidence rates (ESR and WSR) and cumulative risk by sex and region, 2017

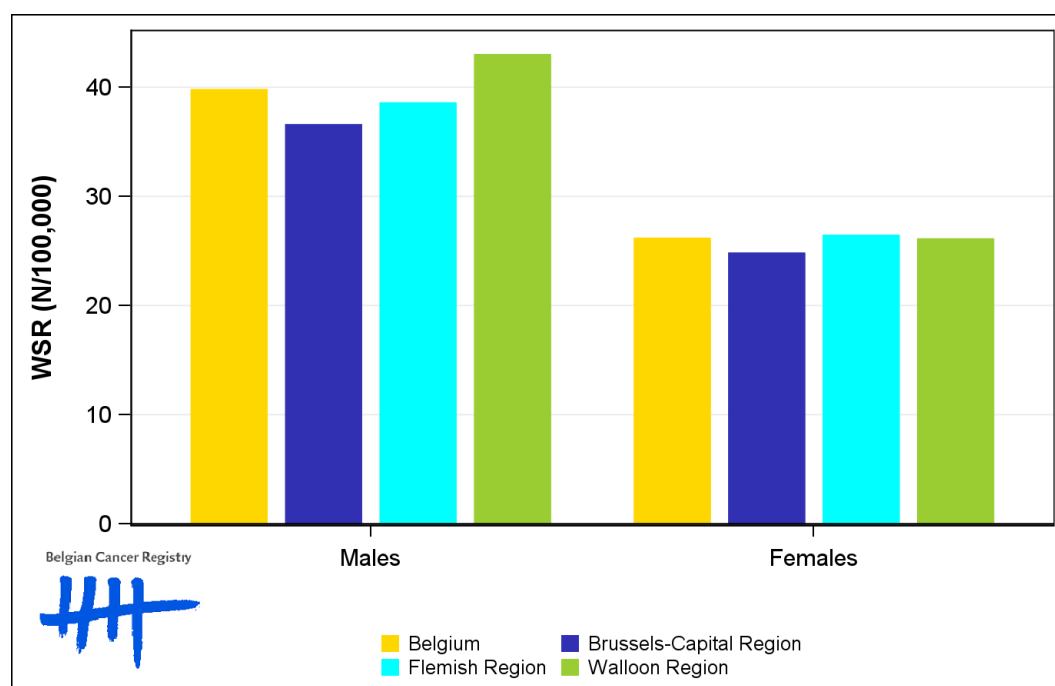
Males	Age (years)	N	CR	ESR	WSR	CRi
Belgium	69.6	4,559	81.9	59.1	39.8	4.62
Brussels-Capital Region	69.2	323	55.5	55.4	36.6	4.11
Flemish Region	70.2	2,763	85.8	57.5	38.5	4.45
Walloon Region	68.6	1,473	83.5	63.4	43.0	5.08

Females	Age (years)	N	CR	ESR	WSR	CRi
Belgium	71.6	3,632	63.1	38.3	26.1	3.03
Brussels-Capital Region	71.8	290	47.6	36.6	24.8	2.94
Flemish Region	71.5	2,179	66.1	38.7	26.4	3.04
Walloon Region	71.7	1,163	62.9	38.3	26.1	3.04

CR=Crude (all ages) Rate (N/100,000 person-years)
 ESR=Age-Standardised Rate, using the European Standard Population (N/100,000 person-years)
 WSR=Age-Standardised Rate, using the World Standard Population (N/100,000 person-years)
 CRi=Cumulative Risk for 0-74 years (%)



Figure 1: Colorectal Cancer: Age-standardised incidence rates by sex and region, 2017



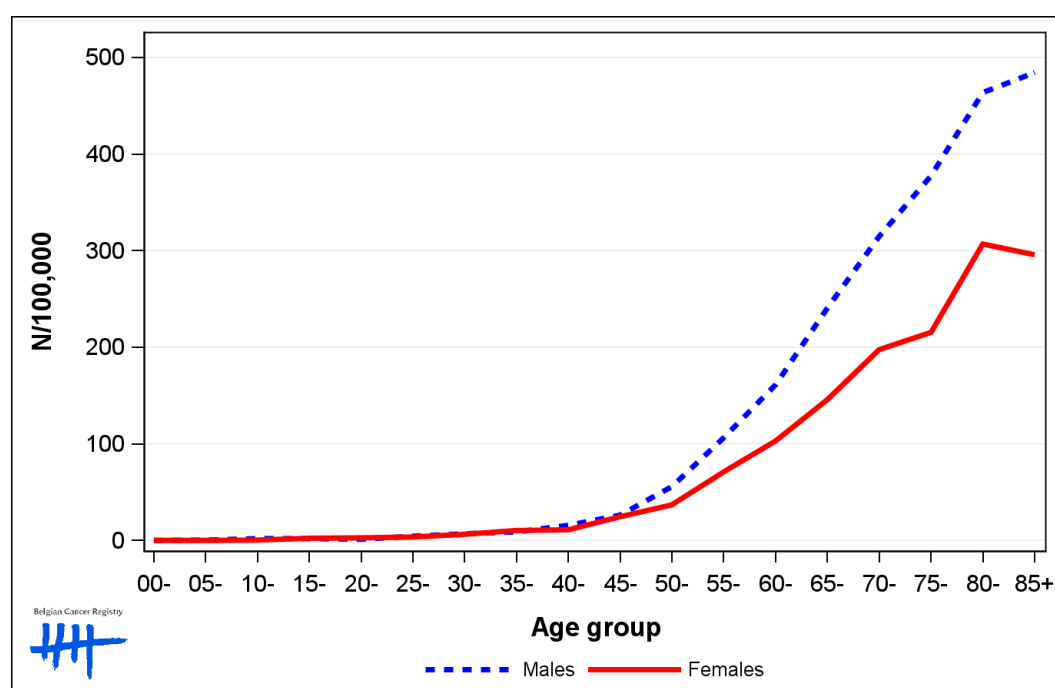
1.2. Age-specific incidence rates

Table 2: Colorectal Cancer: Age-specific incidence rates, crude rate (CR) and age-standardised incidence rates (ESR and WSR) by sex, Belgium 2017

	00-	05-	10-	15-	20-	25-	30-	35-	40-	45-	50-	55-	60-	65-	70-	75-	80-	85+	CR	ESR	WSR
Males	0.0	0.3	1.9	1.9	1.2	4.4	6.9	8.8	15.6	26.2	55.7	106.3	161.1	240.6	314.7	377.4	463.7	484.4	81.9	59.1	39.8
Females	0.0	0.0	0.3	2.3	2.7	3.5	6.3	10.2	11.0	24.5	36.9	70.9	103.0	145.7	197.5	215.4	306.9	295.8	63.1	38.3	26.1

CR=Crude (all ages) Rate (N/100,000 person-years)
 ESR=Age-Standardised Rate, using the European Standard Population (N/100,000 person-years)
 WSR=Age-Standardised Rate, using the World Standard Population (N/100,000 person-years)

Figure 2: Colorectal Cancer: Age-specific incidence rates by sex, 2017



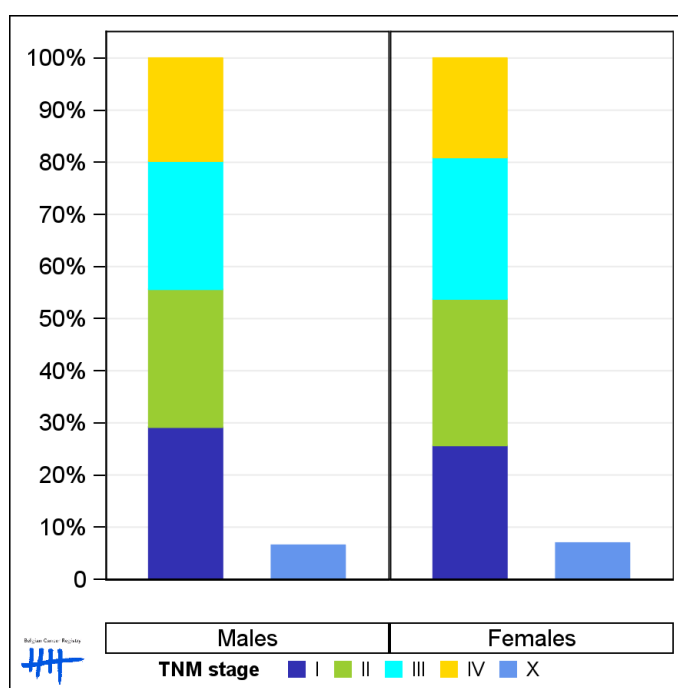
1.3. Combined stage

Table 3: Colorectal Cancer: Distribution of combined stage by sex, Belgium 2017

	Stage I	Stage II	Stage III	Stage IV	Stage X	Stage NA	Total
Males							
N	1,242	1,125	1,046	840	297	9	4,559
%	27.2	24.7	22.9	18.4	6.5	0.2	100
Females							
N	866	947	916	643	252	8	3,632
%	23.8	26.1	25.2	17.7	6.9	0.2	100

Staging according to the TNM 8th edition (Ref: Brierley JD, Gospodarowicz MK, Wittekind Ch. TNM classification of malignant tumours, UICC 8th edition)
 Combined TNM stage : compilation of pathological (pTNM) and clinical (cTNM) stage. pTNM prevails over cTNM, except when cTNM stage is IV
 Stage X: diagnoses with an unknown stage
 Stage NA: diagnoses with a histological diagnosis where no stage can be evaluated (Not Applicable)

Figure 3: Colorectal Cancer: Bar chart of known combined stage by sex, Belgium 2017



1.4. Trends in incidence

Table 4: Colorectal Cancer: Age-standardised incidence rates (WSR) and average annual percentage change (AAPC) by incidence year, sex and region

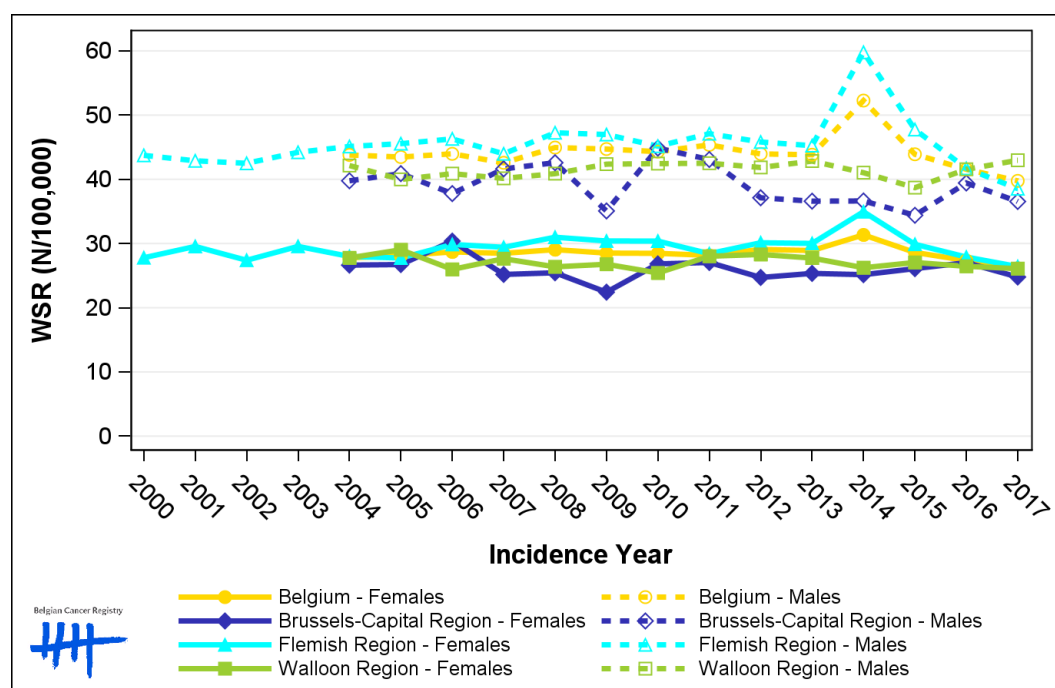
Males	2003	2004	2005	2006	2007	2008	2009	2010	2011	2012	2013	2014	2015	2016	2017	AAPC	95% CI
Belgium	43.8	43.5	44.0	42.6	45.0	44.7	44.3	45.4	44.0	43.8	52.3	43.9	41.6	39.8	-0.1	[-1.0; 0.8]	
Brussels-Capital Region	39.8	40.9	37.8	41.6	42.6	35.1	44.9	43.1	37.1	36.6	36.6	34.4	39.4	36.6	-0.8	[-1.9; 0.2]	
Flemish Region	44.2	45.1	45.6	46.3	44.0	47.3	47.0	45.2	47.1	45.8	45.2	59.8	47.8	41.7	38.5	-0.8	[-1.8; 0.1]
Walloon Region	42.2	40.0	40.9	40.2	40.9	42.4	42.4	42.5	41.9	42.8	41.0	38.7	41.6	43.0	0.1	[-0.3; 0.6]	

Females	2003	2004	2005	2006	2007	2008	2009	2010	2011	2012	2013	2014	2015	2016	2017	AAPC	95% CI
Belgium	27.8	28.1	28.7	28.5	29.1	28.5	28.5	28.2	29.1	28.9	31.4	28.6	27.4	26.1	-0.5	[-0.8; -0.1]	
Brussels-Capital Region	26.6	26.7	30.4	25.2	25.4	22.4	26.8	27.1	24.7	25.4	25.2	26.1	27.0	24.8	-0.4	[-1.4; 0.6]	
Flemish Region	29.6	28.0	27.7	29.9	29.4	31.0	30.4	30.4	28.4	30.1	30.0	35.0	29.9	27.9	26.4]-0.1;0[[-0.8; 0.8]
Walloon Region	27.8	29.0	26.0	27.6	26.4	26.8	25.4	28.0	28.3	27.7	26.2	27.0	26.5	26.1	-0.3	[-0.8; 0.3]	

WSR=Age-Standardised Rate, using the World Standard Population (N/100,000 person-years)

AAPC = Average Annual Percentage Change over the 2004-2017 period (except for the Flemish region : 2003-2017).

Figure 4: Colorectal Cancer: Age-standardised incidence rates (WSR) by incidence year, sex and region



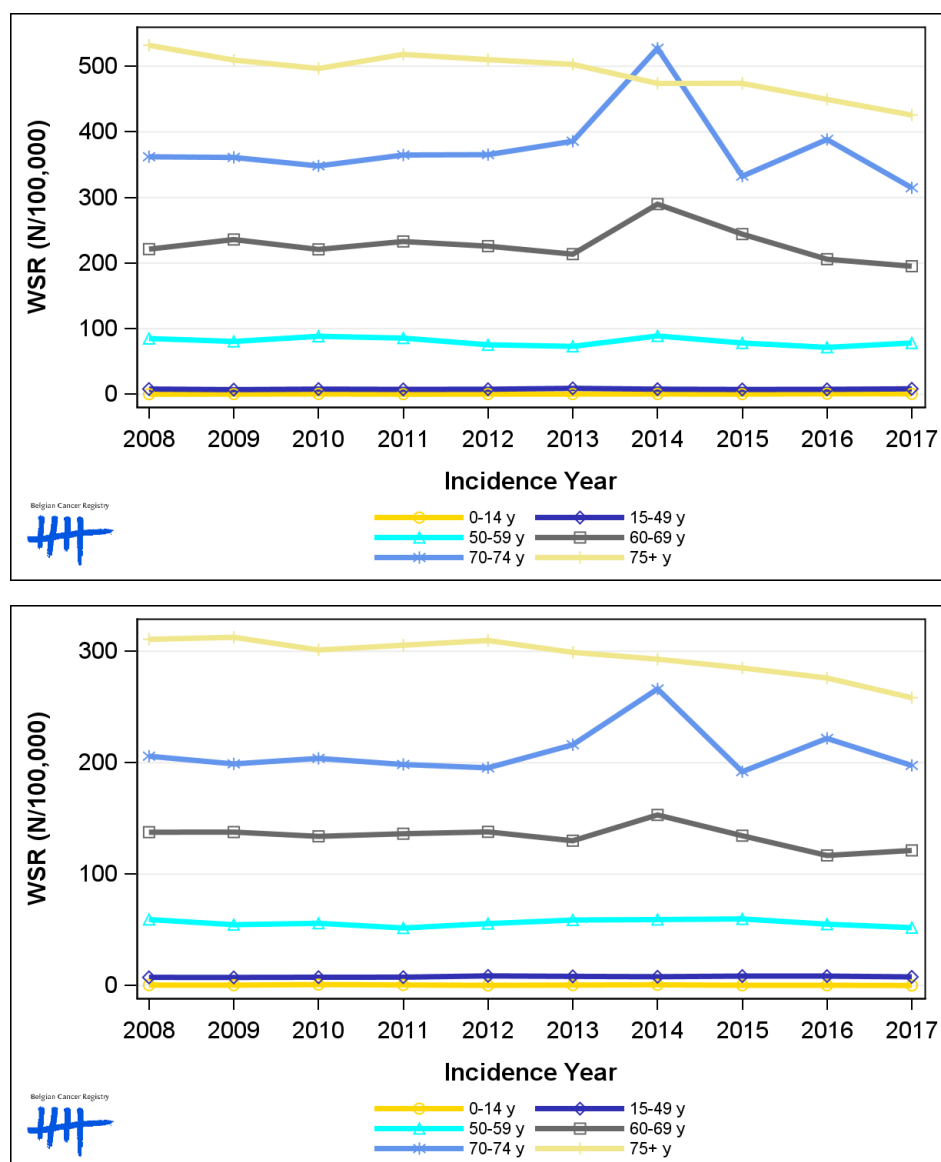
1.5. Incidence by broad age groups

Table 5: Colorectal Cancer: Number of new diagnoses and age-standardised incidence rates (WSR) by broad age groups and incidence year by sex, Belgium

	N										WSR									
	2008	2009	2010	2011	2012	2013	2014	2015	2016	2017	2008	2009	2010	2011	2012	2013	2014	2015	2016	2017
Males																				
All ages	4,507	4,527	4,573	4,780	4,731	4,790	5,591	4,903	4,735	4,559	45.0	44.7	44.3	45.4	44.0	43.8	52.3	43.9	41.6	39.8
0-14 y	1	3	5	2	3	4	5	2	9	7	0.1	0.3	0.5	0.2	0.3	0.4	0.5	0.2	0.8	0.6
15-49 y	248	215	243	230	239	275	242	222	229	246	8.0	7.1	7.9	7.4	7.7	9.0	7.8	7.3	7.5	8.3
50-59 y	613	590	654	644	577	566	702	630	583	640	85.0	80.5	88.4	85.6	75.4	73.0	88.9	78.2	71.5	78.2
60-69 y	1,126	1,224	1,173	1,277	1,295	1,272	1,778	1,511	1,310	1,253	221.2	235.9	220.8	232.9	225.8	213.6	289.8	244.1	205.9	195.2
70-74 y	741	745	721	749	727	752	1,030	662	798	706	362.1	361.1	348.1	364.8	365.3	385.7	527.5	332.5	388.5	314.7
75+ y	1,778	1,750	1,777	1,878	1,890	1,921	1,834	1,876	1,806	1,707	532.0	509.5	496.6	518.2	510.2	503.0	474.0	474.0	449.5	425.7
Females																				
All ages	3,705	3,723	3,731	3,752	3,889	3,881	4,117	3,848	3,761	3,632	29.1	28.5	28.5	28.2	29.1	28.9	31.4	28.6	27.4	26.1
0-14 y	4	4	9	6	2	5	7	3	3	1	0.4	0.4	0.9	0.6	0.2	0.5	0.7	0.3	0.3	<0.1
15-49 y	220	217	222	224	258	243	232	247	248	225	7.4	7.3	7.5	7.6	8.7	8.3	8.0	8.5	8.5	7.8
50-59 y	425	395	416	389	427	456	469	480	444	424	59.3	54.6	55.9	51.7	55.6	58.8	59.3	59.8	55.1	52.0
60-69 y	751	763	756	791	836	815	983	868	781	817	137.7	137.8	133.9	136.3	138.0	130.0	153.1	134.5	116.8	121.3
70-74 y	506	490	502	482	458	494	604	439	521	503	205.9	199.0	203.9	198.4	195.5	216.1	266.2	192.0	221.9	197.5
75+ y	1,799	1,854	1,826	1,860	1,908	1,868	1,822	1,811	1,764	1,662	310.8	312.6	301.2	305.5	309.7	299.1	293.0	285.1	276.1	258.4

N=Number of invasive tumours
WSR=Age-Standardised Rate, using the World Standard Population (N/100,000 person-years)

Figure 5: Colorectal Cancer: Age-standardised incidence rates (WSR) versus incidence year by broad age groups for males (top) and females (bottom), Belgium



2. Relative survival

Table 6: Colorectal Cancer: 5-year relative survival proportion by sex, age group and region, Belgium 2013-2017

	5-year relative survival 2013-2017 (%)					
	Males			Females		
	N at risk	estimate	95% CI	N at risk	estimate	95% CI
Overall	23,734	71.6	[70.7, 72.6]	18,706	71.0	[70.0, 72.0]
Age group						
15-49 years	1,182	75.7	[72.6, 78.6]	1,179	79.1	[76.3, 81.8]
50-64 years	6,086	75.3	[73.9, 76.7]	4,105	77.5	[75.9, 79.1]
65+ years	16,473	69.9	[68.8, 71.2]	13,425	68.2	[66.9, 69.5]
Region						
Brussels-Capital Region	1,511	63.4	[59.6, 67.2]	1,439	68.9	[64.9, 72.8]
Flemish Region	15,447	74.2	[73.1, 75.3]	11,624	73.8	[72.6, 75.1]
Walloon Region	6,777	67.1	[65.3, 69.0]	5,643	65.4	[63.5, 67.3]

Figure 6: Colorectal Cancer: relative survival proportion by sex, Belgium 2013-2017

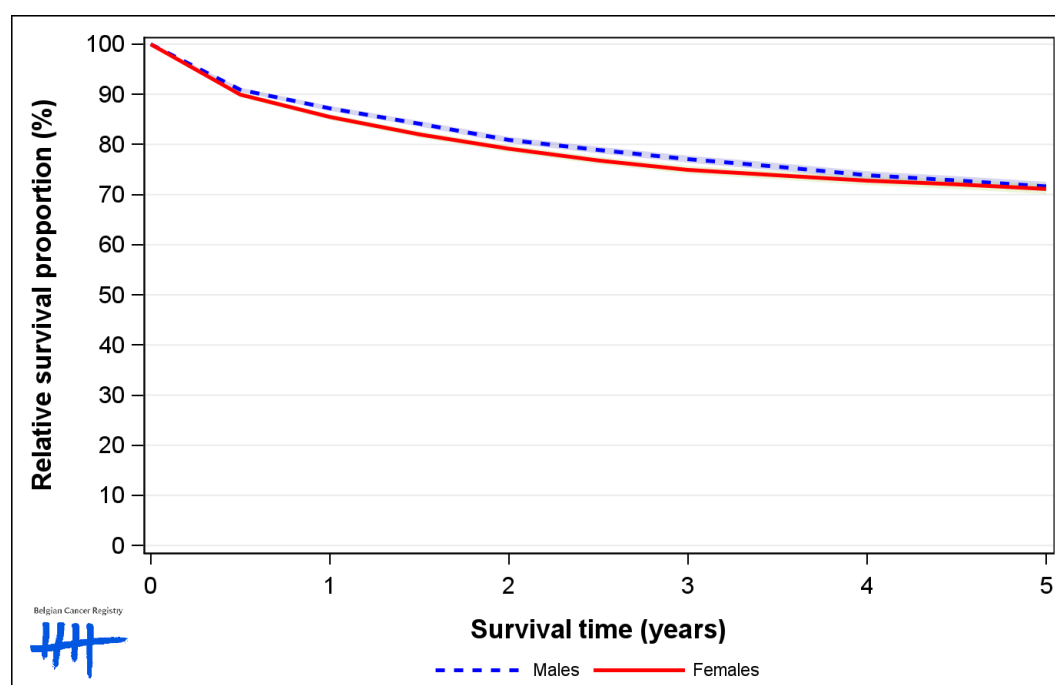


Figure 7: Colorectal Cancer: relative survival proportion by age group in males, Belgium 2013-2017

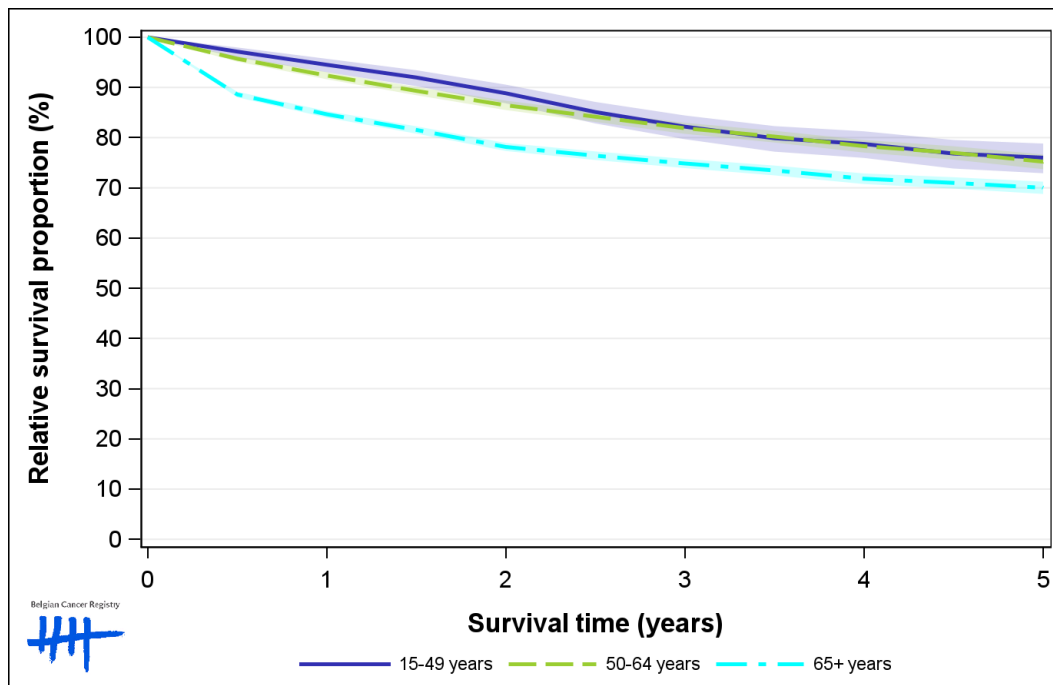


Figure 8: Colorectal Cancer: relative survival proportion by age group in females, Belgium 2013-2017

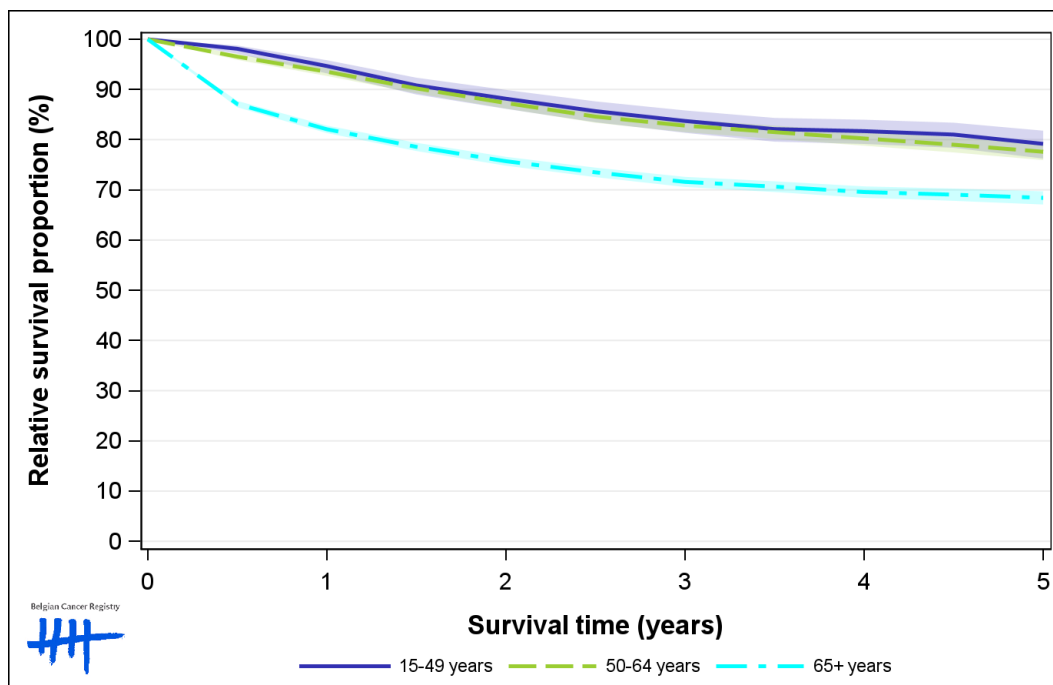


Figure 9: Colorectal Cancer: relative survival proportion by region in males, Belgium 2013-2017

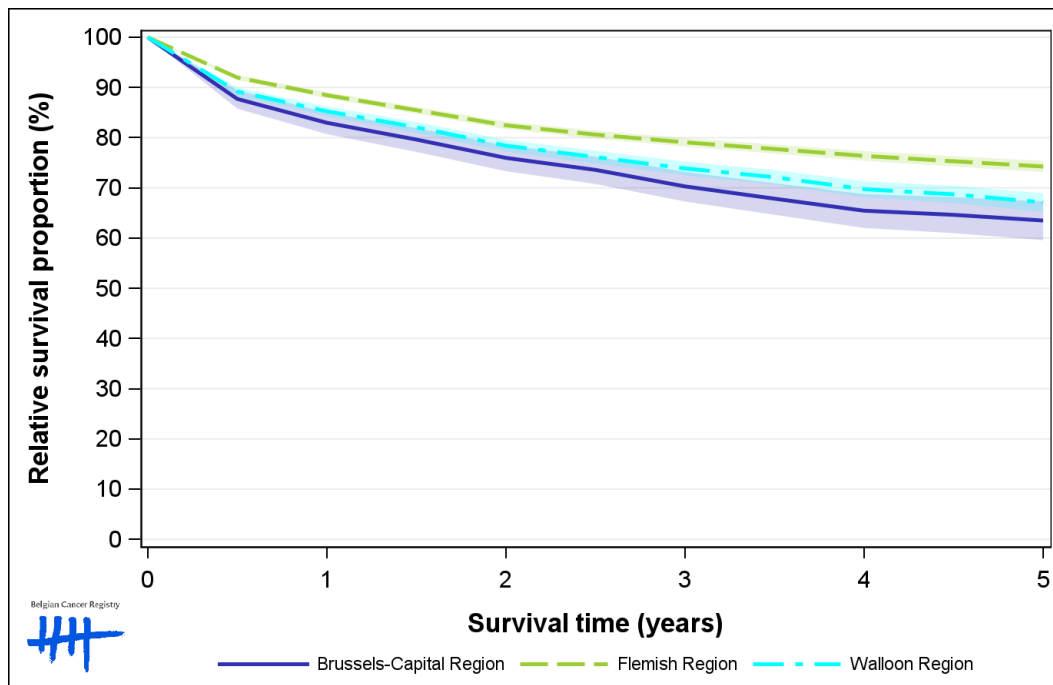


Figure 10: Colorectal Cancer: relative survival proportion by region in females, Belgium 2013-2017

