

Belgian Cancer Registry



Cancer Fact Sheet **Bladder Cancer**

ICD10 : C67

Belgium 2017

1. Cancer Incidence

1.1. Number of new diagnoses and incidence rates

Table 1: Bladder Cancer: Average age at diagnosis, number of new cancer diagnoses (N), crude rate (CR), age-standardised incidence rates (ESR and WSR) and cumulative risk by sex and region, 2017

Males	Age (years)	N	CR	ESR	WSR	CRi
Belgium	73.6	1,864	33.5	22.6	14.4	1.62
Brussels-Capital Region	73.3	138	23.7	22.5	14.1	1.46
Flemish Region	74.4	1,123	34.9	21.4	13.4	1.48
Walloon Region	72.2	603	34.2	24.9	16.1	1.92

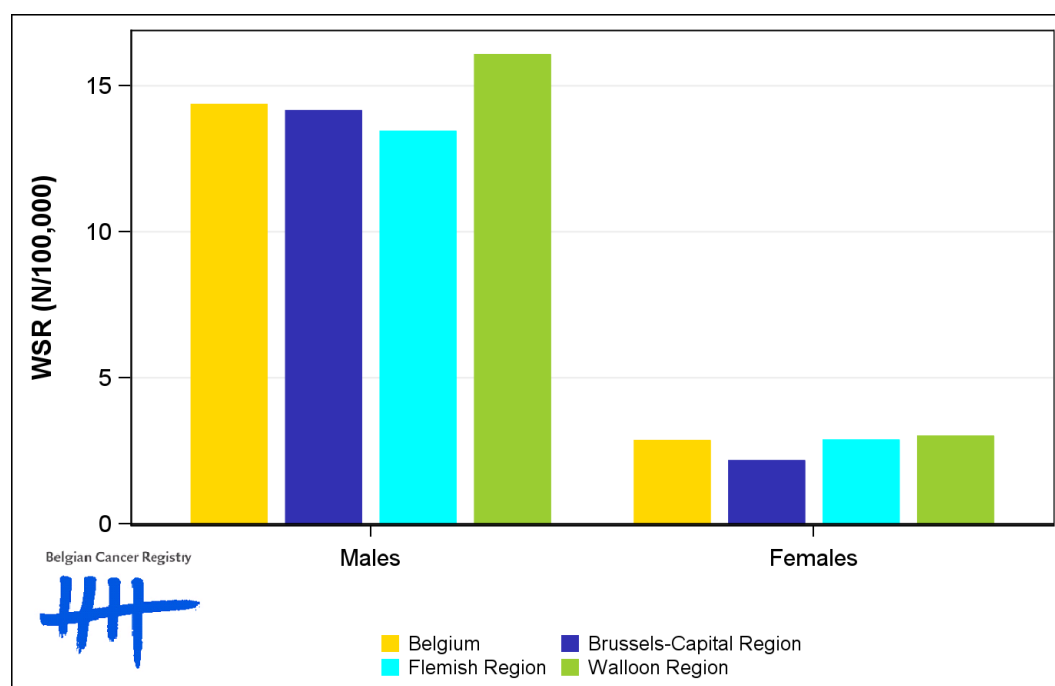
Females	Age (years)	N	CR	ESR	WSR	CRi
Belgium	75.0	462	8.0	4.4	2.8	0.31
Brussels-Capital Region	75.6	31	5.1	3.4	2.2	0.22
Flemish Region	75.1	279	8.5	4.4	2.9	0.32
Walloon Region	74.7	152	8.2	4.6	3.0	0.33

CR=Crude (all ages) Rate (N/100,000 person-years)
 ESR=Age-Standardised Rate, using the European Standard Population (N/100,000 person-years)
 WSR=Age-Standardised Rate, using the World Standard Population (N/100,000 person-years)
 CRi=Cumulative Risk for 0-74 years (%)

Belgian Cancer Registry



Figure 1: Bladder Cancer: Age-standardised incidence rates by sex and region, 2017



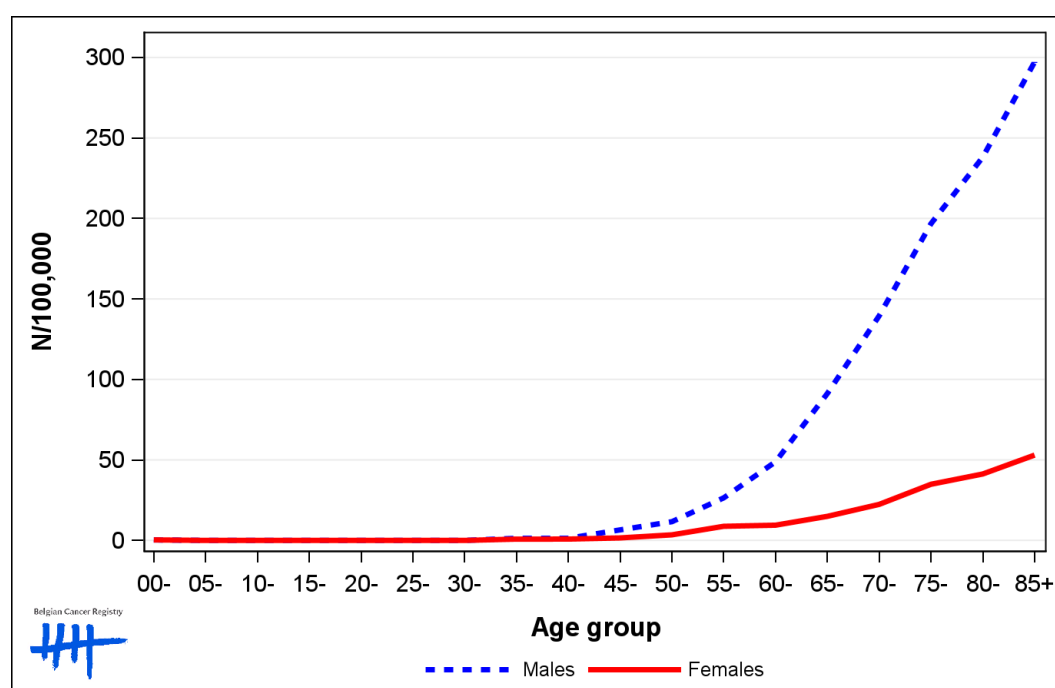
1.2. Age-specific incidence rates

Table 2: Bladder Cancer: Age-specific incidence rates, crude rate (CR) and age-standardised incidence rates (ESR and WSR) by sex, Belgium 2017

	00-	05-	10-	15-	20-	25-	30-	35-	40-	45-	50-	55-	60-	65-	70-	75-	80-	85+	CR	ESR	WSR
Males	0.3	0.0	0.0	0.0	0.0	0.0	0.0	1.3	1.3	6.5	11.6	26.4	48.9	91.3	139.5	196.8	238.1	297.2	33.5	22.6	14.4
Females	0.3	0.0	0.0	0.0	0.0	0.0	0.0	0.8	0.8	1.5	3.5	8.8	9.5	15.0	22.4	34.9	41.3	53.0	8.0	4.4	2.8

CR=Crude (all ages) Rate (N/100,000 person-years)
 ESR=Age-Standardised Rate, using the European Standard Population (N/100,000 person-years)
 WSR=Age-Standardised Rate, using the World Standard Population (N/100,000 person-years)

Figure 2: Bladder Cancer: Age-specific incidence rates by sex, 2017



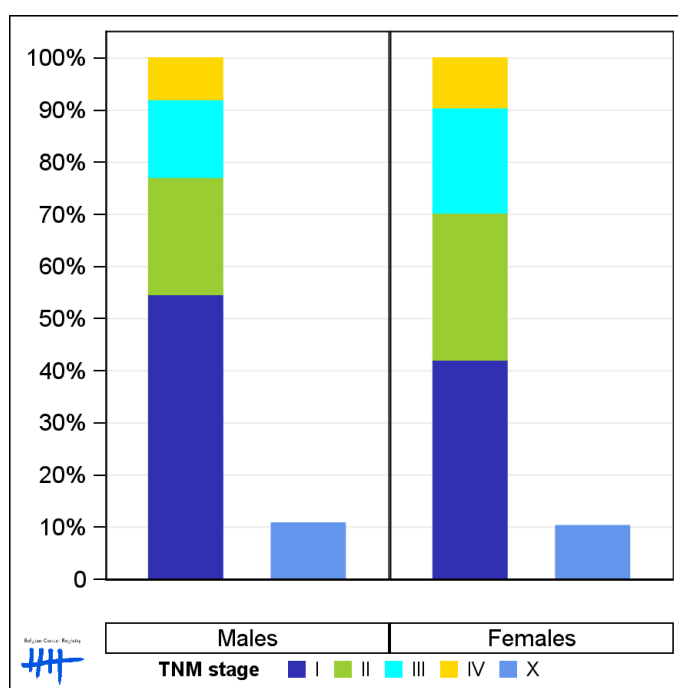
1.3. Combined stage

Table 3: Bladder Cancer: Distribution of combined stage by sex, Belgium 2017

	Stage I	Stage II	Stage III	Stage IV	Stage X	Stage NA	Total
Males							
N	905	373	247	131	200	8	1,864
%	48.6	20.0	13.3	7.0	10.7	0.4	100
Females							
N	173	116	83	39	47	4	462
%	37.4	25.1	18.0	8.4	10.2	0.9	100

Staging according to the TNM 8th edition (Ref: Brierley JD, Gospodarowicz MK, Wittekind Ch. TNM classification of malignant tumours, UICC 8th edition)
 Combined TNM stage : compilation of pathological (pTNM) and clinical (cTNM) stage. pTNM prevails over cTNM, except when cTNM stage is IV
 Stage X: diagnoses with an unknown stage
 Stage NA: diagnoses with a histological diagnosis where no stage can be evaluated (Not Applicable)

Figure 3: Bladder Cancer: Bar chart of known combined stage by sex, Belgium 2017



1.4. Trends in incidence

Table 4: Bladder Cancer: Age-standardised incidence rates (WSR) and average annual percentage change (AAPC) by incidence year, sex and region

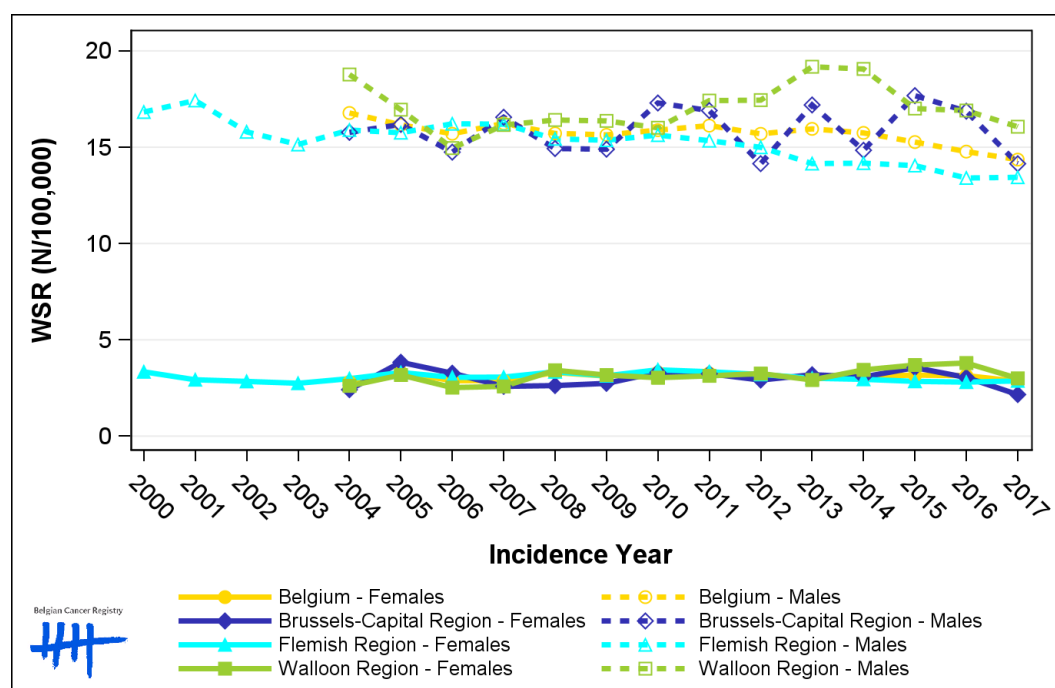
Males	2003	2004	2005	2006	2007	2008	2009	2010	2011	2012	2013	2014	2015	2016	2017	AAPC	95% CI
Belgium	16.8	16.2	15.7	16.2	15.7	15.7	15.6	15.9	16.1	15.7	16.0	15.7	15.3	14.8	14.4	-0.9	[-1.2; -0.7]
Brussels-Capital Region	15.8	16.2	14.7	16.6	14.9	14.9	17.3	16.9	14.1	17.2	14.8	17.7	16.9	14.1	14.1	0.1	[-1.1; 1.3]
Flemish Region	15.1	15.9	15.8	16.2	16.2	15.4	15.4	15.6	15.3	15.0	14.2	14.2	14.0	13.4	13.4	-1.2	[-1.5; -0.9]
Walloon Region	18.8	16.9	15.0	16.2	16.4	16.4	16.0	17.4	17.4	19.2	19.1	17.0	16.9	16.1	16.1	-1.3	[-1.9; -0.6]

Females	2003	2004	2005	2006	2007	2008	2009	2010	2011	2012	2013	2014	2015	2016	2017	AAPC	95% CI
Belgium	2.8	3.3	2.9	2.9	3.3	3.1	3.3	3.3	3.3	3.2	3.0	3.1	3.2	3.1	2.8	0.2	[-0.6; 1.0]
Brussels-Capital Region	2.4	3.8	3.3	2.6	2.6	2.7	3.3	3.2	3.2	2.9	3.2	3.1	3.6	3.0	2.2	-0.2	[-2.5; 2.2]
Flemish Region	2.7	3.0	3.3	3.1	3.1	3.3	3.1	3.4	3.3	3.2	3.0	2.9	2.8	2.8	2.9	-0.4	[-0.9; 0.2]
Walloon Region	2.6	3.2	2.5	2.6	3.4	3.2	3.0	3.1	3.1	3.2	2.9	3.4	3.7	3.8	3.0	1.9	[0.4; 3.4]

WSR=Age-Standardised Rate, using the World Standard Population (N/100,000 person-years)

AAPC = Average Annual Percentage Change over the 2004-2017 period (except for the Flemish region : 2003-2017).

Figure 4: Bladder Cancer: Age-standardised incidence rates (WSR) by incidence year, sex and region



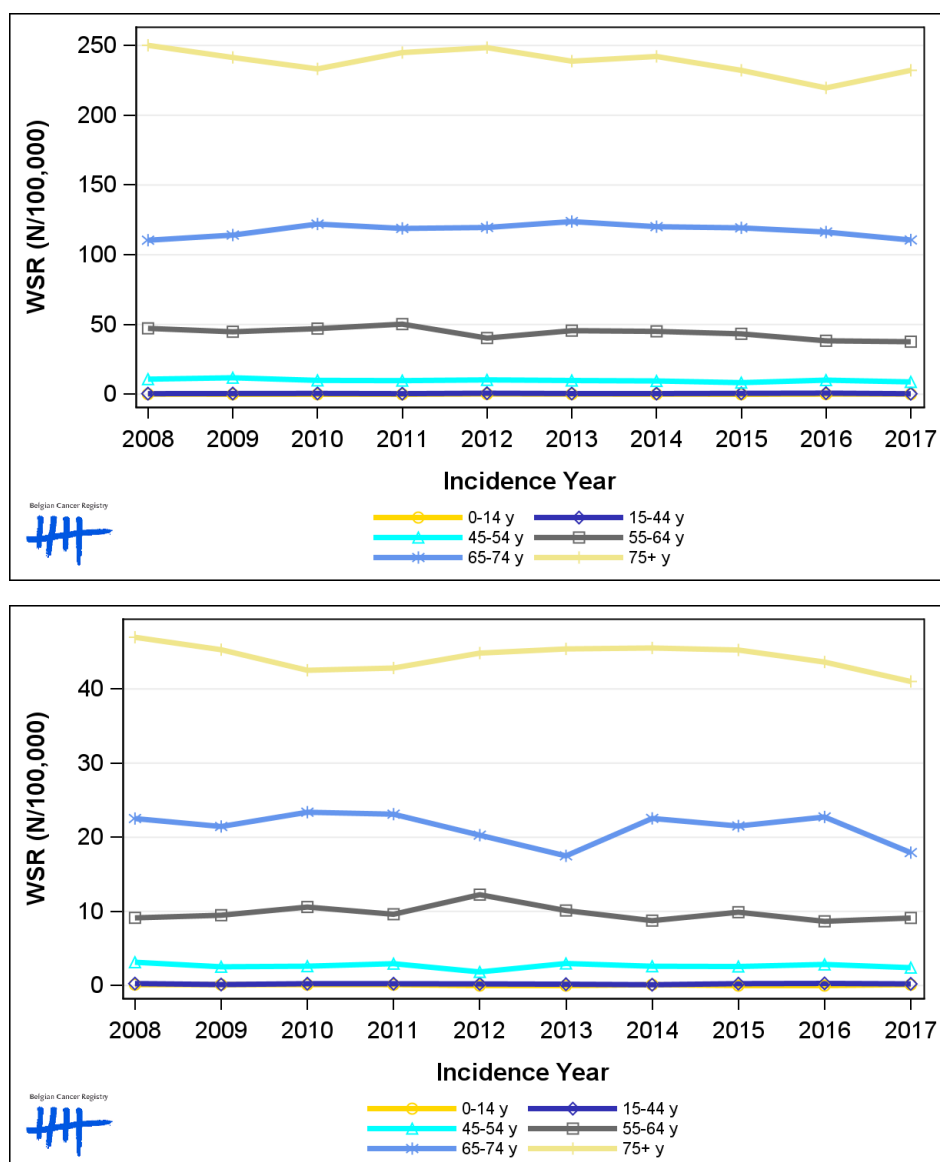
1.5. Incidence by broad age groups

Table 5: Bladder Cancer: Number of new diagnoses and age-standardised incidence rates (WSR) by broad age groups and incidence year by sex, Belgium

	N										WSR									
	2008	2009	2010	2011	2012	2013	2014	2015	2016	2017	2008	2009	2010	2011	2012	2013	2014	2015	2016	2017
Males																				
All ages	1,704	1,728	1,762	1,833	1,847	1,879	1,903	1,878	1,846	1,864	15.7	15.6	15.9	16.1	15.7	16.0	15.7	15.3	14.8	14.4
0-14 y	1	0	0	0	2	1	1	0	1	1	0.1	0.0	0.0	0.0	0.2	0.1	<0.1	0.0	0.1	0.1
15-44 y	12	15	17	12	21	14	13	18	22	10	0.4	0.5	0.6	0.4	0.8	0.5	0.5	0.7	0.8	0.4
45-54 y	86	95	81	81	86	82	81	71	86	74	10.8	11.8	9.9	9.8	10.3	9.9	9.5	8.3	10.1	8.9
55-64 y	288	282	303	333	267	305	304	296	268	267	47.2	44.8	47.1	50.3	40.3	45.6	45.1	43.3	38.3	37.7
65-74 y	479	505	545	527	546	575	572	583	586	582	110.4	114.1	122.0	118.9	119.6	123.8	120.1	119.3	116.3	110.6
75+ y	838	831	816	880	925	902	932	910	883	930	250.1	241.4	233.3	245.0	248.5	238.8	242.2	232.2	219.6	232.2
Females																				
All ages	478	465	477	473	494	480	506	507	505	462	3.3	3.1	3.3	3.3	3.2	3.0	3.1	3.2	3.1	2.8
0-14 y	1	1	1	1	0	0	1	0	0	1	0.1	0.1	0.1	0.1	0.0	0.0	0.1	0.0	0.0	0.1
15-44 y	7	4	7	7	6	5	3	7	7	6	0.3	0.1	0.3	0.3	0.2	0.2	0.1	0.3	0.3	0.2
45-54 y	25	20	21	24	15	25	22	21	24	20	3.1	2.5	2.6	3.0	1.8	3.0	2.6	2.6	2.9	2.4
55-64 y	58	62	70	65	83	69	61	69	62	67	9.1	9.5	10.6	9.6	12.3	10.1	8.8	9.9	8.7	9.1
65-74 y	114	106	120	117	109	90	121	116	126	104	22.5	21.5	23.4	23.1	20.3	17.5	22.5	21.5	22.7	17.9
75+ y	273	272	258	259	281	291	298	294	286	264	47.0	45.3	42.5	42.8	44.8	45.4	45.5	45.3	43.6	41.0

N=Number of invasive tumours
WSR=Age-Standardised Rate, using the World Standard Population (N/100,000 person-years)

Figure 5: Bladder Cancer: Age-standardised incidence rates (WSR) versus incidence year by broad age groups for males (top) and females (bottom), Belgium



2. Relative survival

Table 6: Bladder Cancer: 5-year relative survival proportion by sex, age group and region, Belgium 2013-2017

	5-year relative survival 2013-2017 (%)					
	Males			Females		
	N at risk	estimate	95% CI	N at risk	estimate	95% CI
Overall	9,320	57.0	[55.4, 58.6]	2,447	47.7	[45.0, 50.6]
Age group						
15-59 years	996	68.1	[64.4, 71.5]	269	61.6	[54.5, 68.1]
60-74 years	3,785	62.8	[60.7, 64.9]	754	60.8	[56.4, 65.0]
75+ years	4,540	48.5	[45.8, 51.3]	1,424	37.0	[33.0, 41.2]
Region						
Brussels-Capital Region	714	50.7	[45.3, 56.2]	195	46.0	[37.1, 55.0]
Flemish Region	5,457	58.2	[56.1, 60.3]	1,437	48.7	[45.0, 52.4]
Walloon Region	3,149	56.3	[53.7, 59.1]	815	46.4	[41.5, 51.4]

Figure 6: Bladder Cancer: relative survival proportion by sex, Belgium 2013-2017

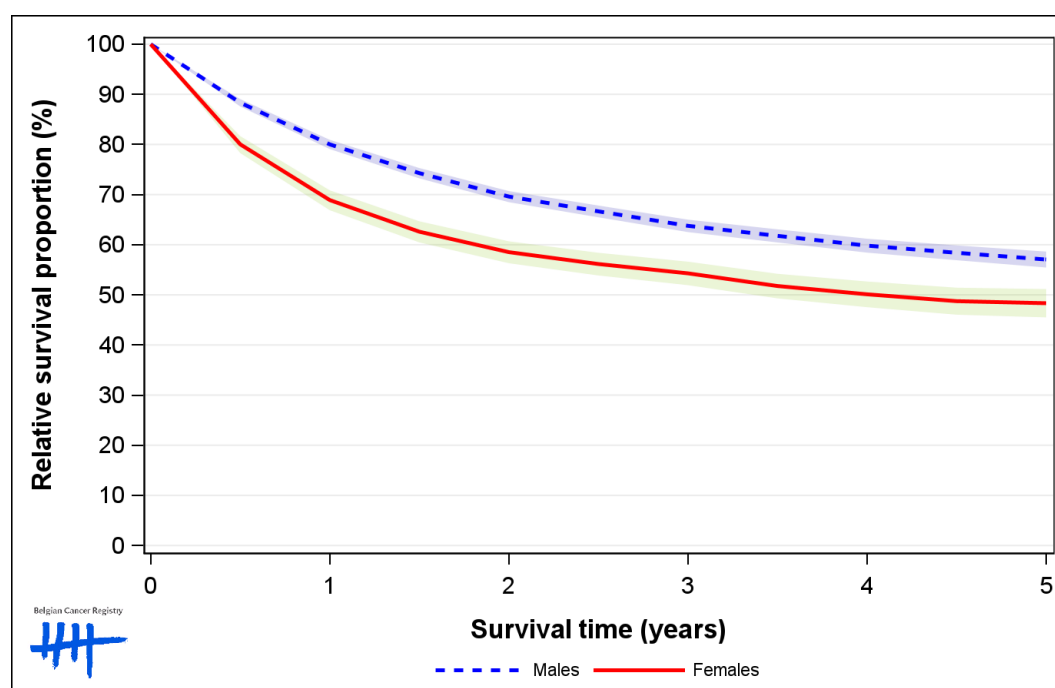


Figure 7: Bladder Cancer: relative survival proportion by age group in males, Belgium 2013-2017

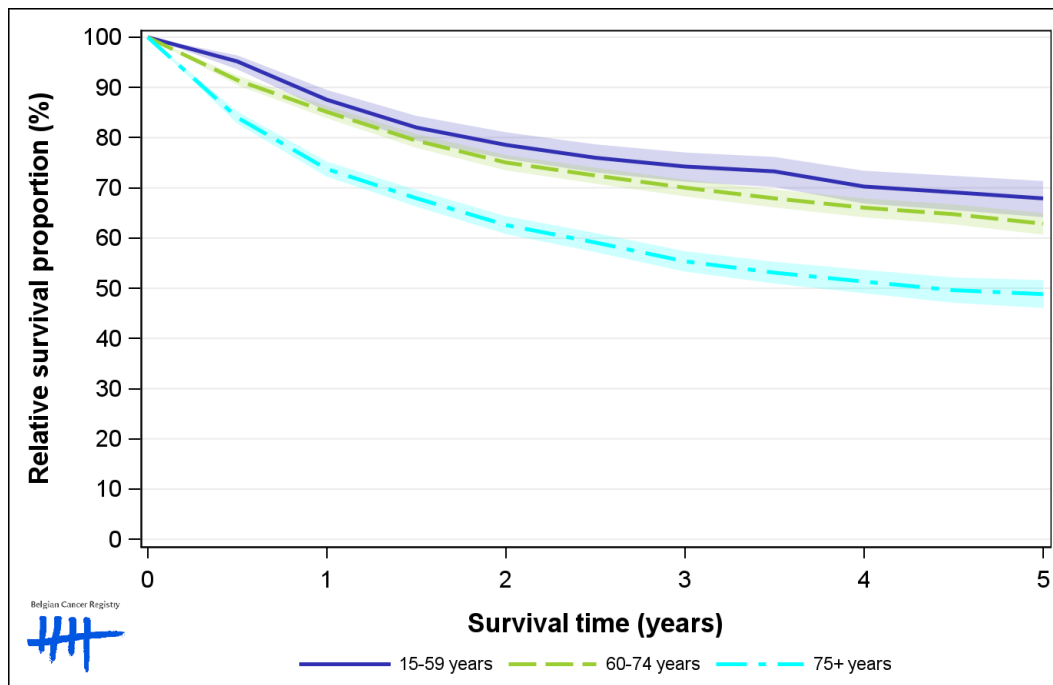


Figure 8: Bladder Cancer: relative survival proportion by age group in females, Belgium 2013-2017

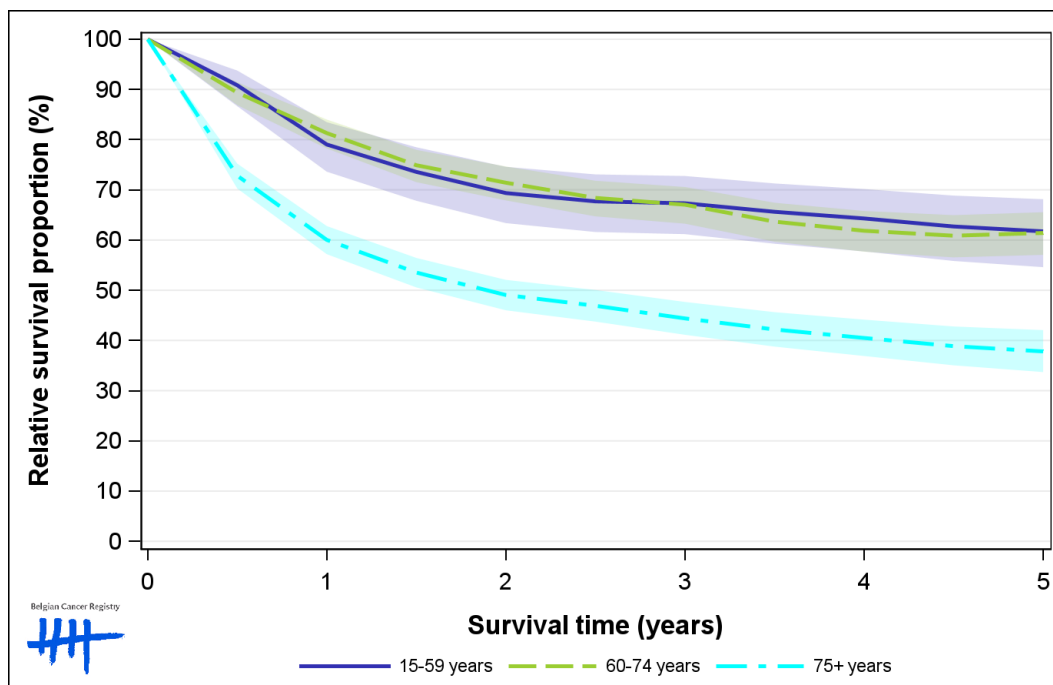


Figure 9: Bladder Cancer: relative survival proportion by region in males, Belgium 2013-2017

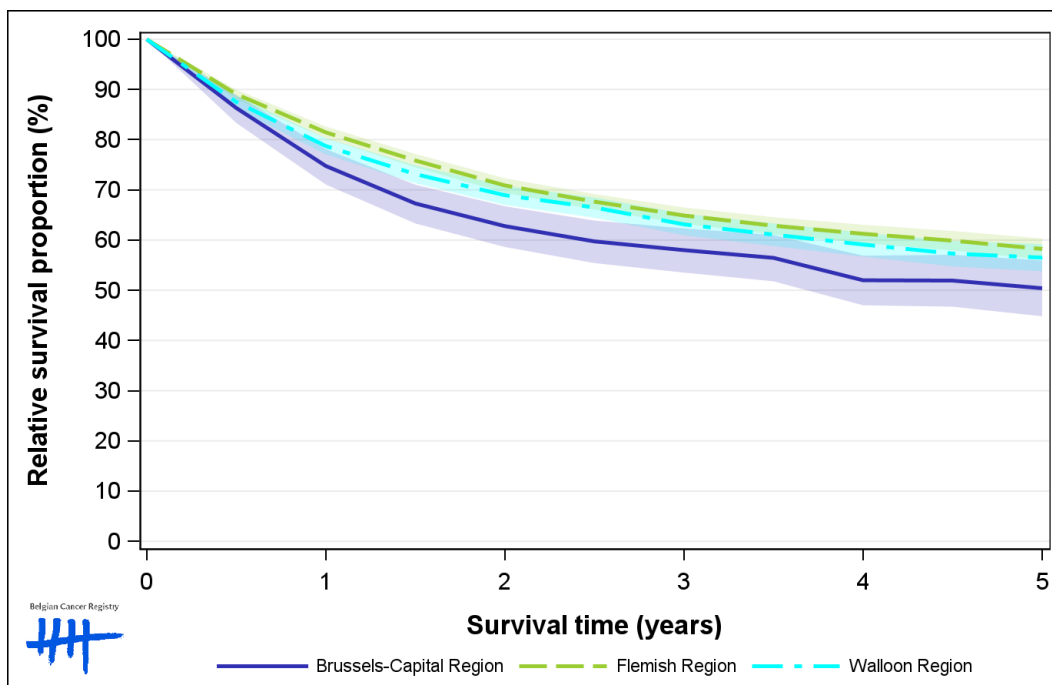


Figure 10: Bladder Cancer: relative survival proportion by region in females, Belgium 2013-2017

