

Belgian Cancer Registry



# Cancer Fact Sheet **Thyroid Cancer**

ICD10 : C73

**Belgium 2016**

# 1. Cancer Incidence

## 1.1. Number of new diagnoses and incidence rates

**Table 1:** Thyroid Cancer: Average age at diagnosis, number of new cancer diagnoses (N), crude rate (CR), age-standardised incidence rates (ESR and WSR) and cumulative risk by sex and region, 2016

Males	Age (years)	N	CR	ESR	WSR	CRi
<b>Belgium</b>	<b>57.3</b>	<b>266</b>	<b>4.8</b>	<b>4.1</b>	<b>3.2</b>	<b>0.35</b>
Brussels-Capital Region	53.0	31	5.3	5.6	4.5	0.50
Flemish Region	59.6	126	3.9	3.2	2.4	0.27
Walloon Region	55.8	109	6.2	5.5	4.3	0.47

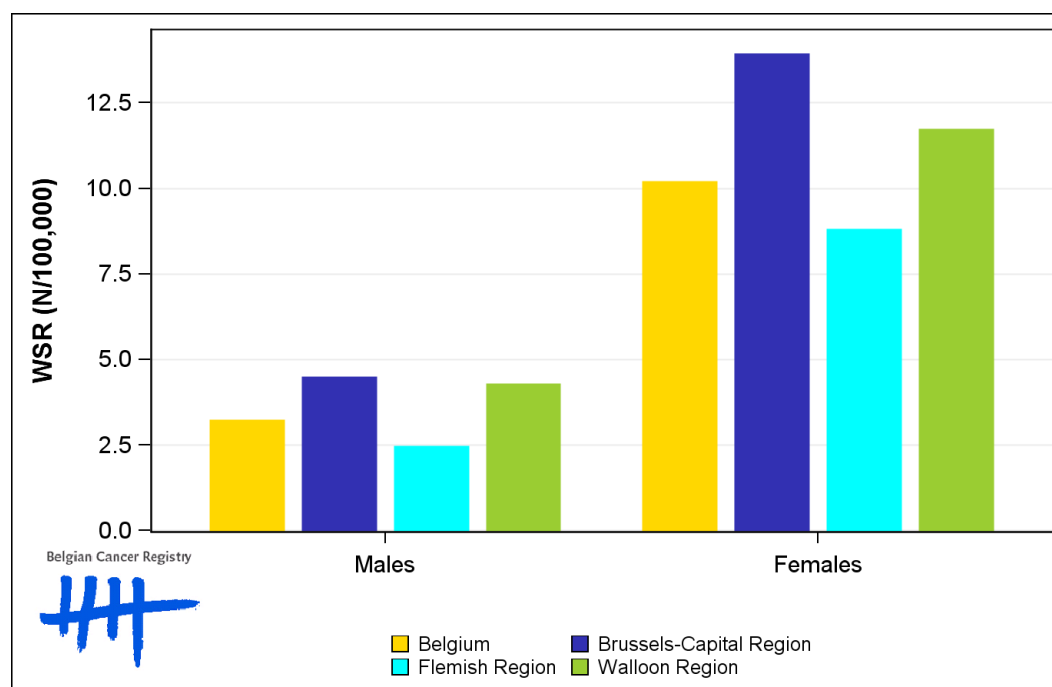
  

Females	Age (years)	N	CR	ESR	WSR	CRi
<b>Belgium</b>	<b>51.6</b>	<b>776</b>	<b>13.5</b>	<b>12.5</b>	<b>10.2</b>	<b>1.00</b>
Brussels-Capital Region	52.6	110	18.1	17.4	13.9	1.40
Flemish Region	51.5	381	11.6	10.7	8.8	0.85
Walloon Region	51.3	285	15.4	14.5	11.7	1.15

CR=Crude (all ages) Rate (N/100,000 person-years)  
 ESR=Age-Standardised Rate, using the European Standard Population (N/100,000 person-years)  
 WSR=Age-Standardised Rate, using the World Standard Population (N/100,000 person-years)  
 CRi=Cumulative Risk for 0-74 years (%)



**Figure 1:** Thyroid Cancer: Age-standardised incidence rates by sex and region, 2016



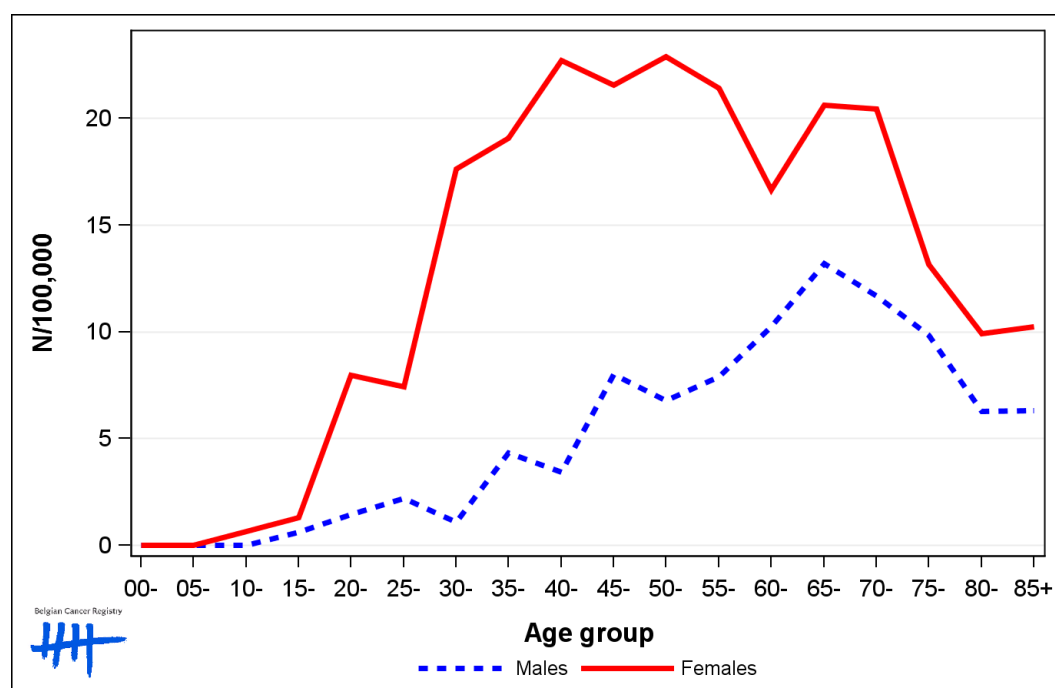
## 1.2. Age-specific incidence rates

**Table 2:** Thyroid Cancer: Age-specific incidence rates, crude rate (CR) and age-standardised incidence rates (ESR and WSR) by sex, Belgium 2016

	00-	05-	10-	15-	20-	25-	30-	35-	40-	45-	50-	55-	60-	65-	70-	75-	80-	85+	CR	ESR	WSR
Males	0.0	0.0	0.0	0.6	1.4	2.2	1.1	4.3	3.4	8.0	6.8	7.9	10.3	13.2	11.7	9.9	6.3	6.3	4.8	4.1	3.2
Females	0.0	0.0	0.7	1.3	8.0	7.4	17.7	19.1	22.7	21.6	22.9	21.4	16.7	20.6	20.4	13.2	9.9	10.3	13.5	12.5	10.2

CR=Crude (all ages) Rate (N/100,000 person-years)  
 ESR=Age-Standardised Rate, using the European Standard Population (N/100,000 person-years)  
 WSR=Age-Standardised Rate, using the World Standard Population (N/100,000 person-years)

**Figure 2:** Thyroid Cancer: Age-specific incidence rates by sex, 2016



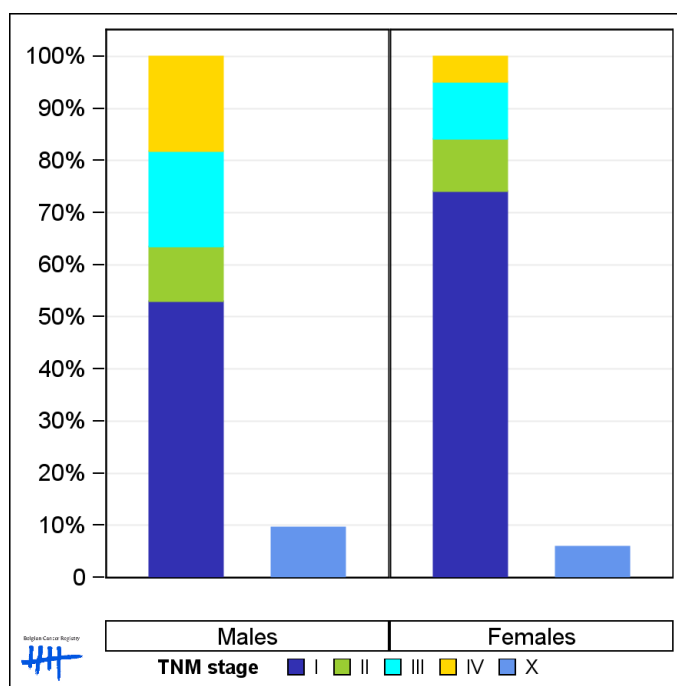
### 1.3. Combined stage

**Table 3:** Thyroid Cancer: Distribution of combined stage by sex, Belgium 2016

	Stage I	Stage II	Stage III	Stage IV	Stage X	Stage NA	Total
<b>Males</b>							
N	125	25	43	43	25	5	266
%	47.0	9.4	16.2	16.2	9.4	1.9	100
<b>Females</b>							
N	538	73	80	35	46	4	776
%	69.3	9.4	10.3	4.5	5.9	0.5	100

Staging according to the TNM 7th edition (Ref:Sobin LH, Gospodarowicz MK, Wittekind Ch. TNM classification of malignant tumours, UICC 7th edition)  
 Combined TNM stage : compilation of pathological (pTNM) and clinical (cTNM) stage.  
 pTNM prevails over cTNM, except when cTNM stage is IV  
 Stage X: diagnoses with an unknown stage  
 Stage NA: diagnoses with a histological diagnosis where no stage can be evaluated (Not Applicable)

**Figure 3:** Thyroid Cancer: Bar chart of known combined stage by sex, Belgium 2016



## 1.4. Trends in incidence

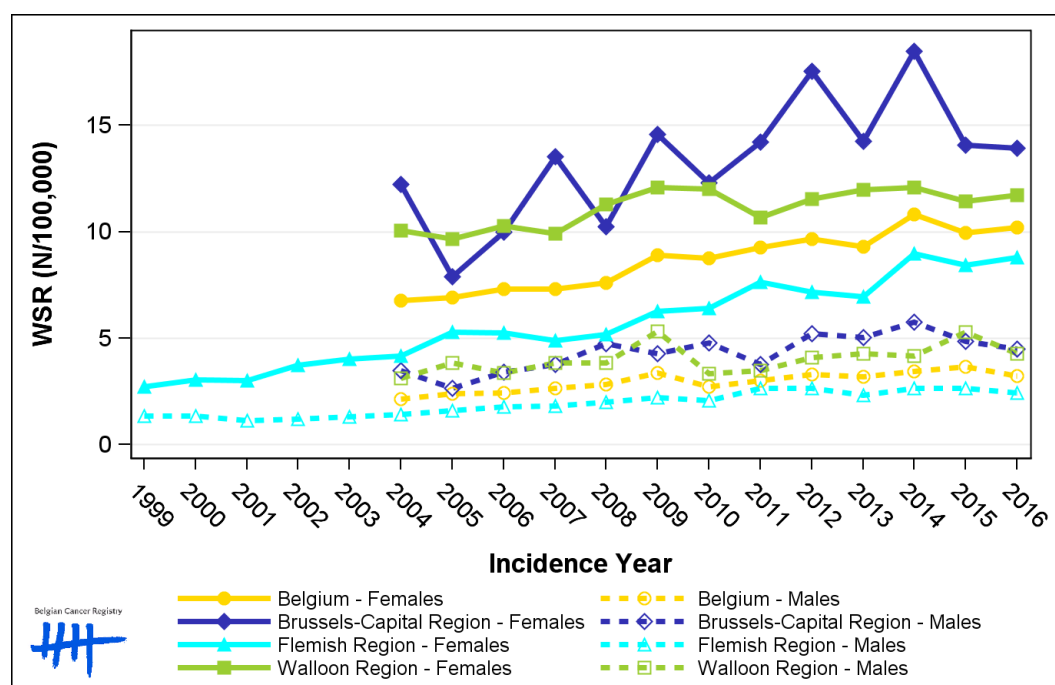
**Table 4:** Thyroid Cancer: Age-standardised incidence rates (WSR) and average annual percentage change (AAPC) by incidence year, sex and region

Males																	
	2002	2003	2004	2005	2006	2007	2008	2009	2010	2011	2012	2013	2014	2015	2016	AAPC	95% CI
<b>Belgium</b>			2.2	2.4	2.4	2.6	2.8	3.4	2.7	3.0	3.3	3.2	3.4	3.6	3.2	3.9	[2.8; 5.1]
Brussels-Capital Region			3.5	2.6	3.4	3.8	4.8	4.3	4.8	3.8	5.2	5.0	5.8	4.8	4.5	4.3	[1.8; 6.8]
Flemish Region	1.2	1.3	1.4	1.6	1.8	1.8	2.0	2.2	2.1	2.7	2.6	2.3	2.6	2.7	2.4	5.6	[4.7; 6.5]
Walloon Region			3.1	3.8	3.4	3.8	3.8	5.3	3.3	3.5	4.1	4.3	4.2	5.3	4.3	2.4	[0.2; 4.7]
Females																	
	2002	2003	2004	2005	2006	2007	2008	2009	2010	2011	2012	2013	2014	2015	2016	AAPC	95% CI
<b>Belgium</b>			6.8	6.9	7.3	7.3	7.6	8.9	8.8	9.3	9.7	9.3	10.8	10.0	10.2	3.8	[3.0; 4.5]
Brussels-Capital Region			12.2	7.9	10.0	13.5	10.2	14.6	12.3	14.2	17.6	14.3	18.5	14.1	13.9	4.1	[1.2; 7.1]
Flemish Region	3.7	4.0	4.2	5.3	5.2	4.9	5.2	6.3	6.4	7.6	7.2	7.0	9.0	8.4	8.8	6.4	[5.4; 7.4]
Walloon Region			10.0	9.6	10.3	9.9	11.3	12.1	12.0	10.7	11.6	12.0	12.1	11.4	11.7	1.5	[0.6; 2.4]

WSR=Age-Standardised Rate, using the World Standard Population (N/100,000 person-years)

AAPC = Average Annual Percentage Change over the 2004-2016 period (except for the Flemish region : 2002-2016).

**Figure 4:** Thyroid Cancer: Age-standardised incidence rates (WSR) by incidence year, sex and region



## 1.5. Incidence by broad age groups

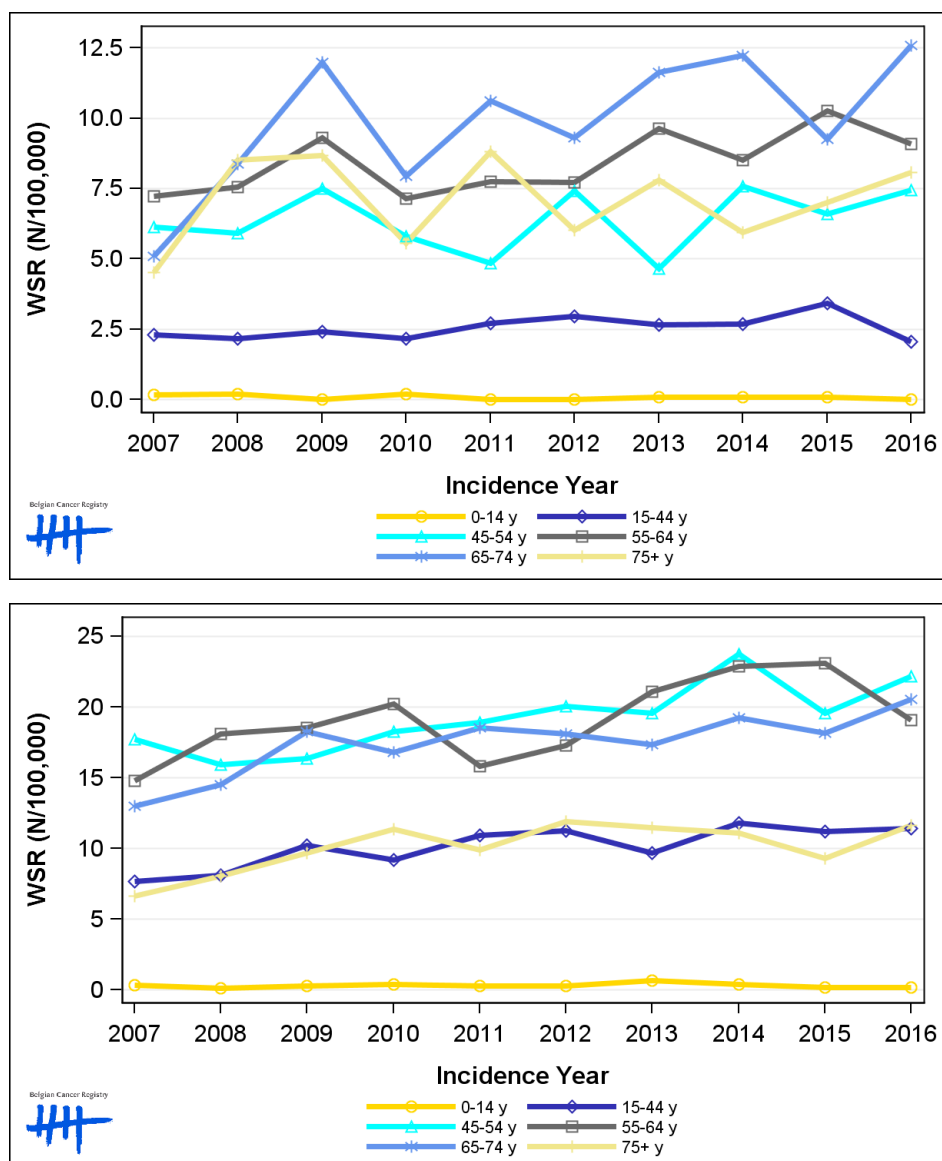
**Table 5:** Thyroid Cancer: Number of new diagnoses and age-standardised incidence rates (WSR) by broad age groups and incidence year by sex, Belgium

	N										WSR									
	2007	2008	2009	2010	2011	2012	2013	2014	2015	2016	2007	2008	2009	2010	2011	2012	2013	2014	2015	2016
<b>Males</b>																				
All ages	186	212	258	204	241	251	250	265	283	266	2.6	2.8	3.4	2.7	3.0	3.3	3.2	3.4	3.6	3.2
0-14 y	2	2	0	2	0	0	1	1	1	0	0.2	0.2	0.0	0.2	0.0	0.0	<0.1	<0.1	<0.1	0.0
15-44 y	55	53	58	54	70	72	64	63	83	48	2.3	2.2	2.4	2.2	2.7	3.0	2.7	2.7	3.4	2.0
45-54 y	47	46	60	46	39	62	38	63	55	60	6.1	5.9	7.5	5.8	4.8	7.4	4.7	7.6	6.6	7.4
55-64 y	45	47	60	47	52	52	65	58	71	64	7.2	7.5	9.3	7.1	7.8	7.7	9.6	8.5	10.2	9.1
65-74 y	22	34	49	34	46	42	54	58	45	63	5.1	8.4	12.0	7.9	10.6	9.3	11.6	12.2	9.3	12.6
75+ y	15	30	31	21	34	23	28	22	28	31	4.5	8.5	8.7	5.6	8.8	6.0	7.8	5.9	7.0	8.1
<b>Females</b>																				
All ages	513	548	634	650	669	706	688	803	740	776	7.3	7.6	8.9	8.8	9.3	9.7	9.3	10.8	10.0	10.2
0-14 y	3	1	3	4	3	3	7	4	2	2	0.3	0.1	0.3	0.4	0.3	0.3	0.7	0.4	0.2	0.2
15-44 y	184	195	241	217	259	265	227	284	265	276	7.7	8.1	10.2	9.2	10.9	11.3	9.7	11.8	11.2	11.4
45-54 y	134	122	127	145	151	160	156	189	156	177	17.7	15.9	16.4	18.2	18.9	20.0	19.6	23.7	19.6	22.2
55-64 y	91	115	121	136	109	120	147	161	166	139	14.8	18.1	18.5	20.2	15.8	17.3	21.1	22.9	23.1	19.1
65-74 y	65	72	88	80	91	91	88	101	97	113	13.0	14.5	18.3	16.8	18.5	18.1	17.3	19.3	18.2	20.5
75+ y	36	43	54	68	56	67	63	64	54	69	6.6	8.0	9.7	11.3	9.9	11.9	11.5	11.1	9.3	11.6

N=Number of invasive tumours

WSR=Age-Standardised Rate, using the World Standard Population (N/100,000 person-years)

**Figure 5:** Thyroid Cancer: Age-standardised incidence rates (WSR) versus incidence year by broad age groups for males (top) and females (bottom), Belgium

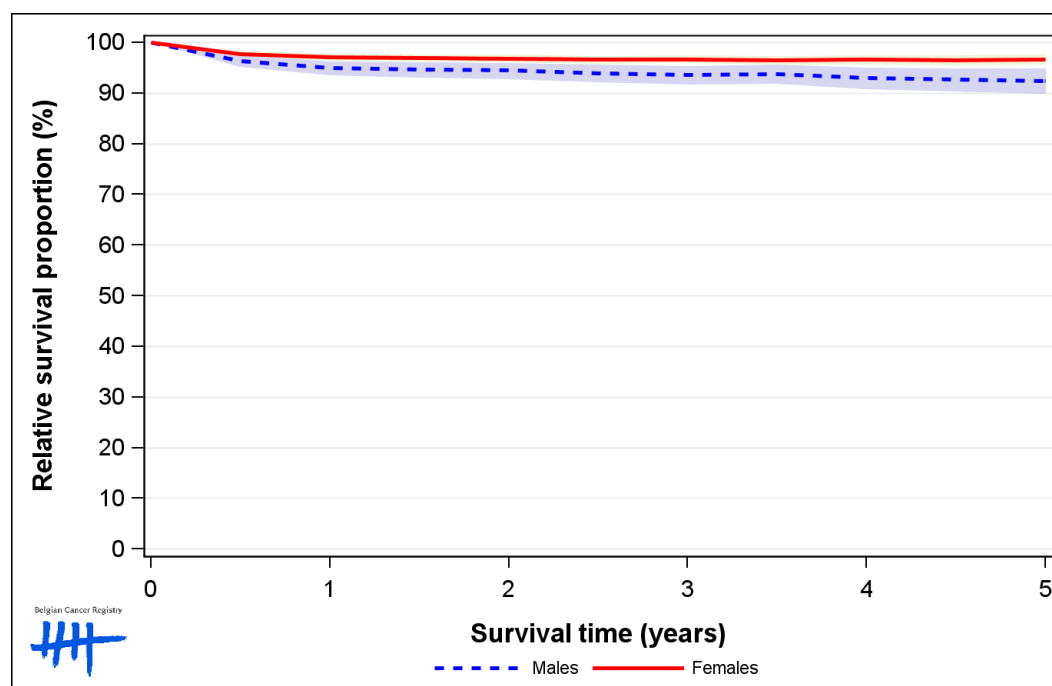


## 2. Relative survival

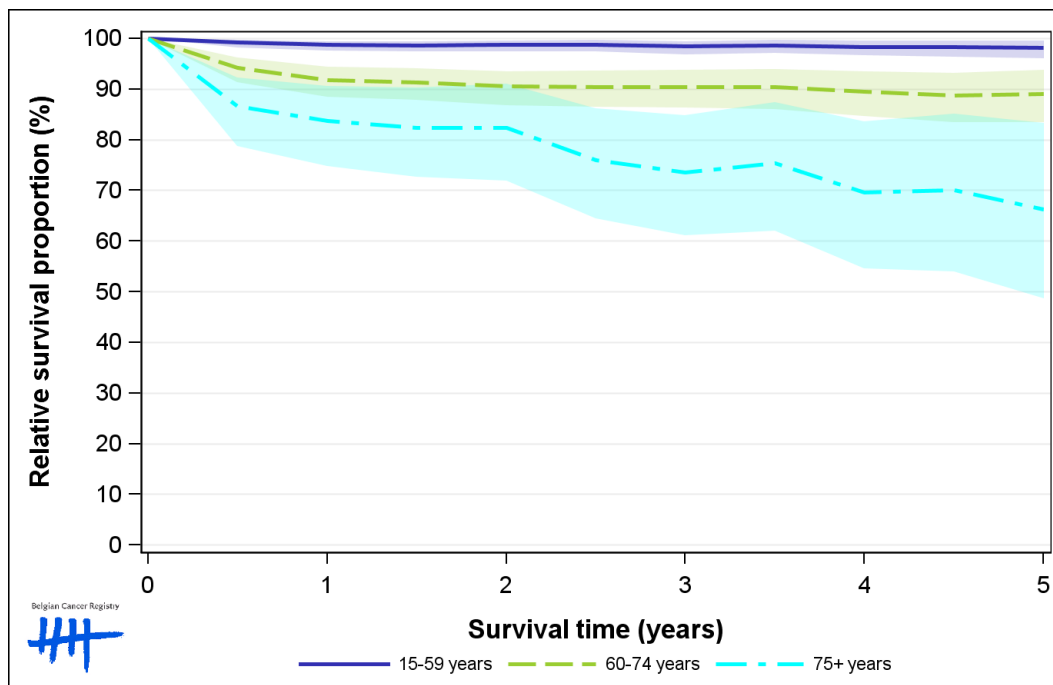
**Table 6:** Thyroid Cancer: 5-year relative survival proportion by sex, age group and region, Belgium 2012-2016

	5-year relative survival 2012-2016 (%)					
	Males			Females		
	N at risk	estimate	95% CI	N at risk	estimate	95% CI
<b>Overall</b>	1,295	92.5	[89.8, 94.8]	3,664	96.6	[95.6, 97.6]
<b>Age group</b>						
15-59 years	737	98.2	[96.1, 99.6]	2,552	99.2	[98.5, 99.8]
60-74 years	430	88.9	[83.3, 93.7]	796	93.4	[90.1, 96.1]
75+ years	128	65.8	[48.5, 82.6]	316	83.3	[74.5, 91.3]
<b>Region</b>						
Brussels-Capital Region	169	100.0	[93.3, 103.5]	576	97.9	[95.0, 100.0]
Flemish Region	586	87.0	[82.6, 90.9]	1,732	94.5	[92.7, 96.1]
Walloon Region	540	96.0	[92.0, 99.2]	1,356	98.7	[97.2, 100.0]

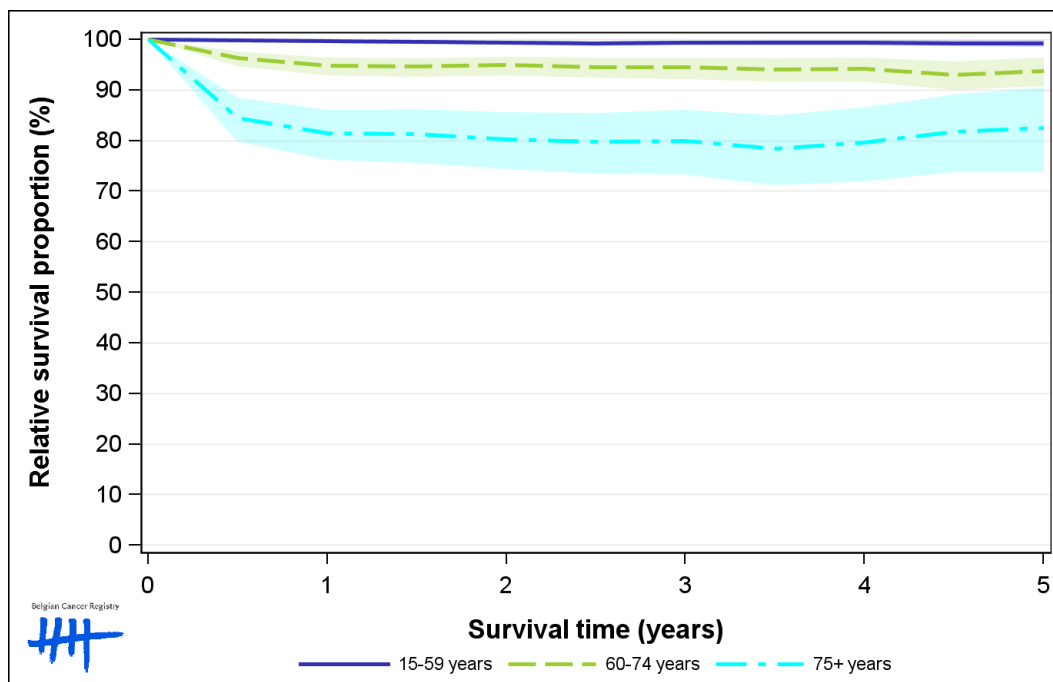
**Figure 6:** Thyroid Cancer: relative survival proportion by sex, Belgium 2012-2016



**Figure 7:** Thyroid Cancer: relative survival proportion by age group in males, Belgium 2012-2016

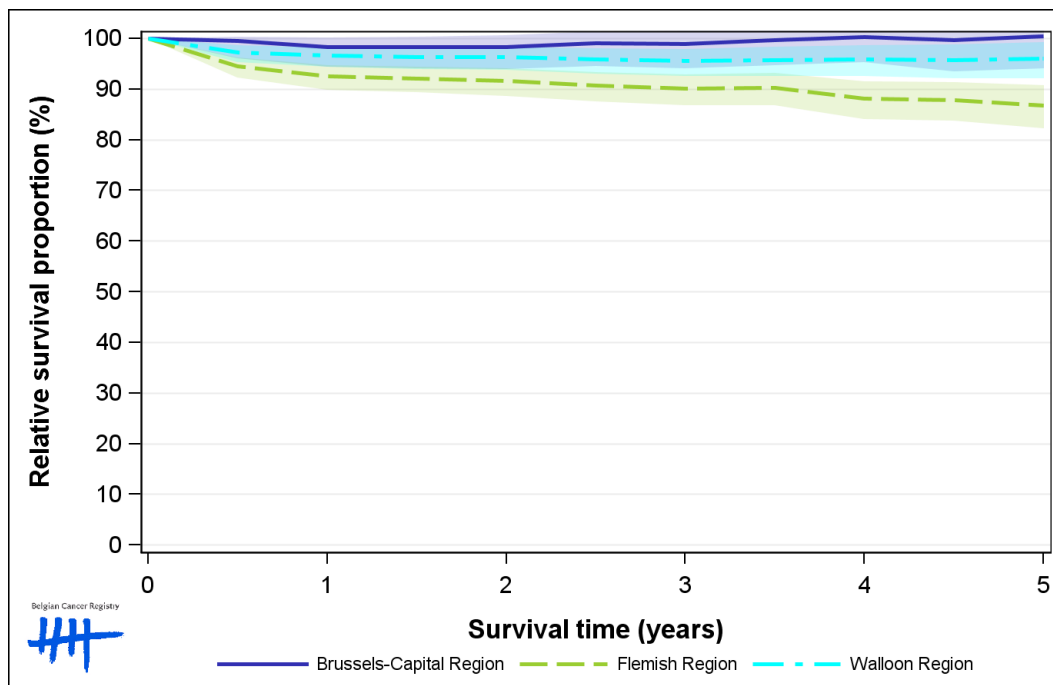


**Figure 8:** Thyroid Cancer: relative survival proportion by age group in females, Belgium 2012-2016





**Figure 9:** Thyroid Cancer: relative survival proportion by region in males, Belgium 2012-2016



**Figure 10:** Thyroid Cancer: relative survival proportion by region in females, Belgium 2012-2016

