



Belgian Cancer Registry



Cancer Fact Sheet **Pancreatic Cancer**

ICD10 : C25

Belgium 2016

1. Cancer Incidence

1.1. Number of new diagnoses and incidence rates

Table 1: Pancreatic Cancer: Average age at diagnosis, number of new cancer diagnoses (N), crude rate (CR), age-standardised incidence rates (ESR and WSR) and cumulative risk by sex and region, 2016

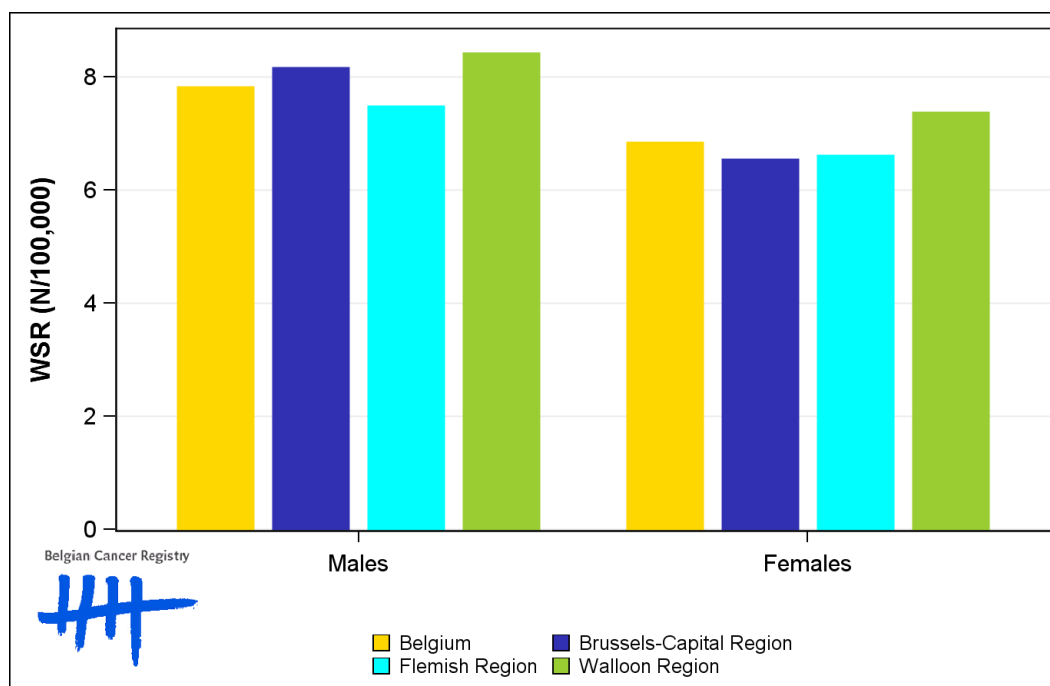
Males	Age (years)	N	CR	ESR	WSR	CRi
Belgium	69.7	888	16.0	11.7	7.8	0.94
Brussels-Capital Region	67.8	65	11.2	11.8	8.2	1.06
Flemish Region	70.7	538	16.8	11.3	7.5	0.89
Walloon Region	68.3	285	16.2	12.6	8.4	1.02

Females	Age (years)	N	CR	ESR	WSR	CRi
Belgium	70.3	891	15.5	10.0	6.8	0.81
Brussels-Capital Region	73.2	82	13.5	10.2	6.6	0.66
Flemish Region	70.3	512	15.6	9.6	6.6	0.79
Walloon Region	69.4	297	16.1	10.6	7.4	0.88

CR=Crude (all ages) Rate (N/100,000 person-years)
 ESR=Age-Standardised Rate, using the European Standard Population (N/100,000 person-years)
 WSR=Age-Standardised Rate, using the World Standard Population (N/100,000 person-years)
 CRi=Cumulative Risk for 0-74 years (%)



Figure 1: Pancreatic Cancer: Age-standardised incidence rates by sex and region, 2016



1.2. Age-specific incidence rates

Table 2: Pancreatic Cancer: Age-specific incidence rates, crude rate (CR) and age-standardised incidence rates (ESR and WSR) by sex, Belgium 2016

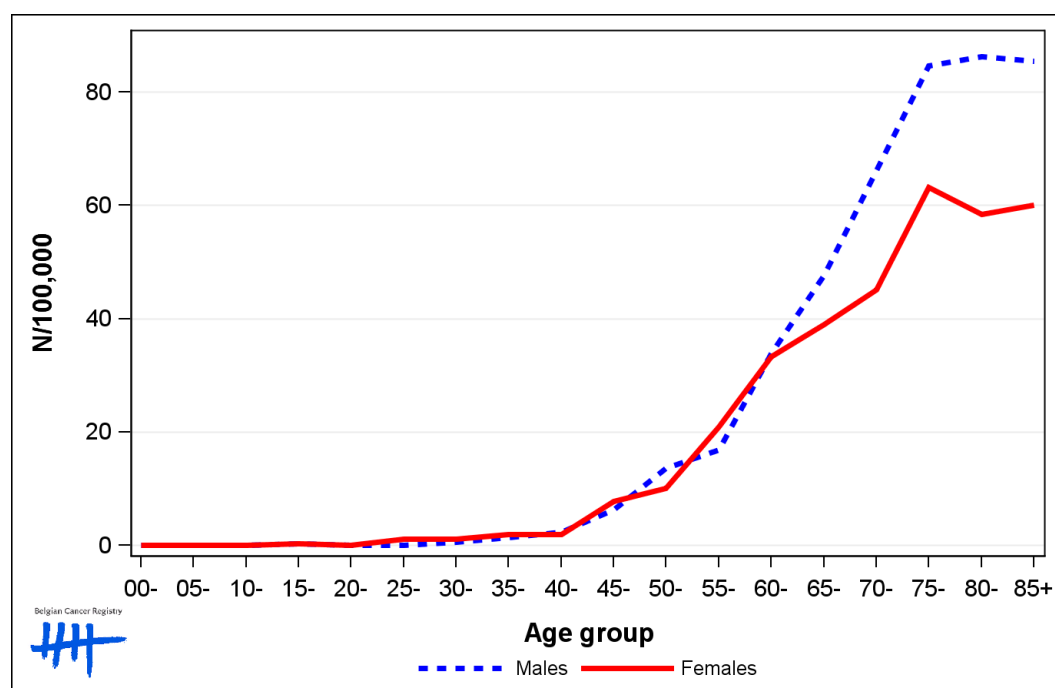
	00-	05-	10-	15-	20-	25-	30-	35-	40-	45-	50-	55-	60-	65-	70-	75-	80-	85+	CR	ESR	WSR
Males	0.0	0.0	0.0	0.3	0.0	0.0	0.6	1.4	2.4	6.2	13.6	16.8	33.8	47.7	66.2	84.7	86.3	85.4	16.0	11.7	7.8
Females	0.0	0.0	0.0	0.3	0.0	1.1	1.1	1.9	1.9	7.7	10.1	20.9	33.3	39.0	45.1	63.1	58.5	60.1	15.5	10.0	6.8

CR=Crude (all ages) Rate (N/100,000 person-years)

ESR=Age-Standardised Rate, using the European Standard Population (N/100,000 person-years)

WSR=Age-Standardised Rate, using the World Standard Population (N/100,000 person-years)

Figure 2: Pancreatic Cancer: Age-specific incidence rates by sex, 2016



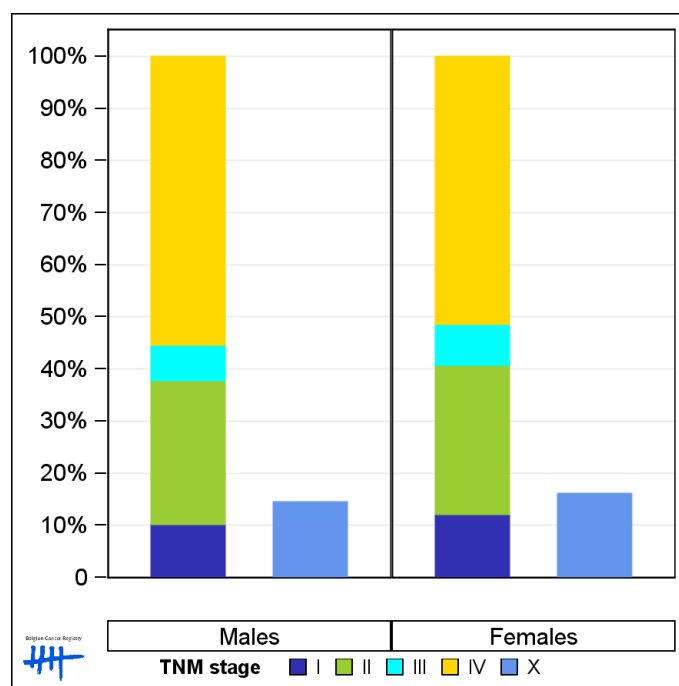
1.3. Combined stage

Table 3: Pancreatic Cancer: Distribution of combined stage by sex, Belgium 2016

	Stage I	Stage II	Stage III	Stage IV	Stage X	Stage NA	Total
Males							
N	77	210	51	421	129	0	888
%	8.7	23.6	5.7	47.4	14.5	0.0	100
Females							
N	91	214	58	384	144	0	891
%	10.2	24.0	6.5	43.1	16.2	0.0	100

Staging according to the TNM 7th edition (Ref:Sobin LH, Gospodarowicz MK, Wittekind Ch. TNM classification of malignant tumours, UICC 7th edition)
 Combined TNM stage : compilation of pathological (pTNM) and clinical (cTNM) stage.
 pTNM prevails over cTNM, except when cTNM stage is IV
 Stage X: diagnoses with an unknown stage
 Stage NA: diagnoses with a histological diagnosis where no stage can be evaluated (Not Applicable)

Figure 3: Pancreatic Cancer: Bar chart of known combined stage by sex, Belgium 2016



1.4. Trends in incidence

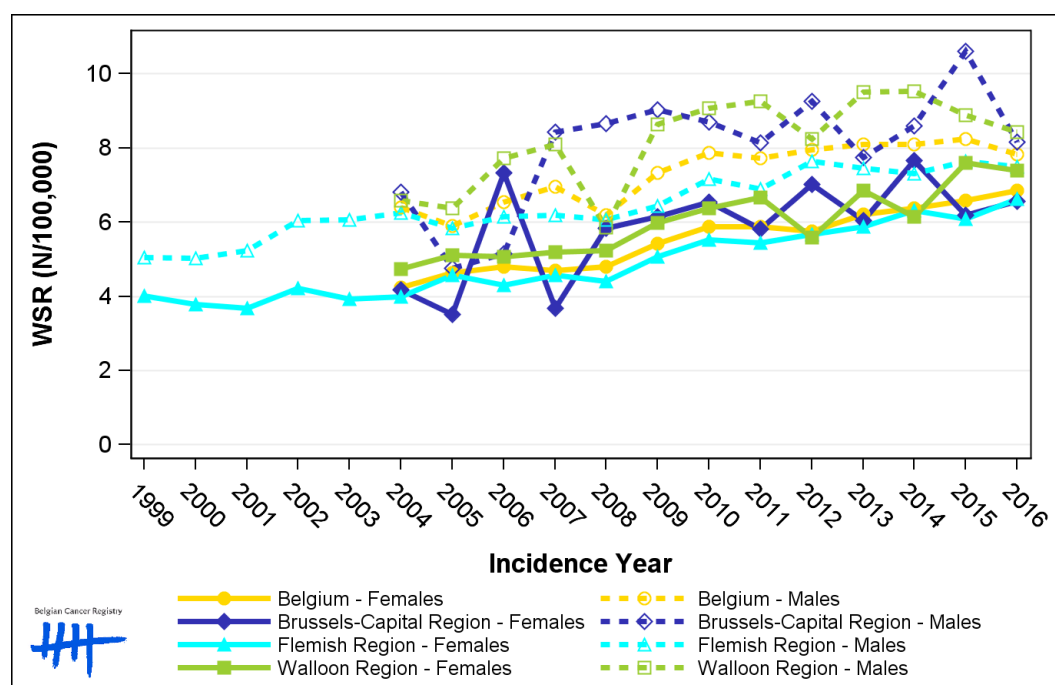
Table 4: Pancreatic Cancer: Age-standardised incidence rates (WSR) and average annual percentage change (AAPC) by incidence year, sex and region

Males																	
	2002	2003	2004	2005	2006	2007	2008	2009	2010	2011	2012	2013	2014	2015	2016	AAPC	95% CI
Belgium			6.4	5.9	6.5	7.0	6.2	7.3	7.9	7.7	7.9	8.1	8.1	8.3	7.8	2.3	[1.4; 3.2]
Brussels-Capital Region			6.8	4.8	5.2	8.4	8.7	9.0	8.7	8.1	9.3	7.8	8.6	10.6	8.2	3.9	[0.9; 7.0]
Flemish Region	6.0	6.1	6.3	5.8	6.1	6.2	6.1	6.4	7.2	6.9	7.6	7.4	7.3	7.6	7.5	1.8	[1.2; 2.4]
Walloon Region			6.6	6.4	7.7	8.1	5.9	8.6	9.1	9.3	8.2	9.5	9.5	8.9	8.4	2.9	[0.9; 4.9]
Females																	
	2002	2003	2004	2005	2006	2007	2008	2009	2010	2011	2012	2013	2014	2015	2016	AAPC	95% CI
Belgium			4.2	4.6	4.8	4.7	4.8	5.4	5.9	5.9	5.8	6.2	6.4	6.6	6.8	3.9	[3.3; 4.5]
Brussels-Capital Region			4.2	3.5	7.3	3.7	5.8	6.1	6.5	5.8	7.0	6.0	7.7	6.2	6.6	4.2	[0.8; 7.7]
Flemish Region	4.2	3.9	4.0	4.6	4.3	4.6	4.4	5.1	5.5	5.5	5.7	5.9	6.3	6.1	6.6	3.8	[3.2; 4.5]
Walloon Region			4.7	5.1	5.1	5.2	5.2	6.0	6.4	6.7	5.6	6.9	6.1	7.6	7.4	3.6	[2.5; 4.8]

WSR=Age-Standardised Rate, using the World Standard Population (N/100,000 person-years)

AAPC = Average Annual Percentage Change over the 2004-2016 period (except for the Flemish region : 2002-2016).

Figure 4: Pancreatic Cancer: Age-standardised incidence rates (WSR) by incidence year, sex and region



1.5. Incidence by broad age groups

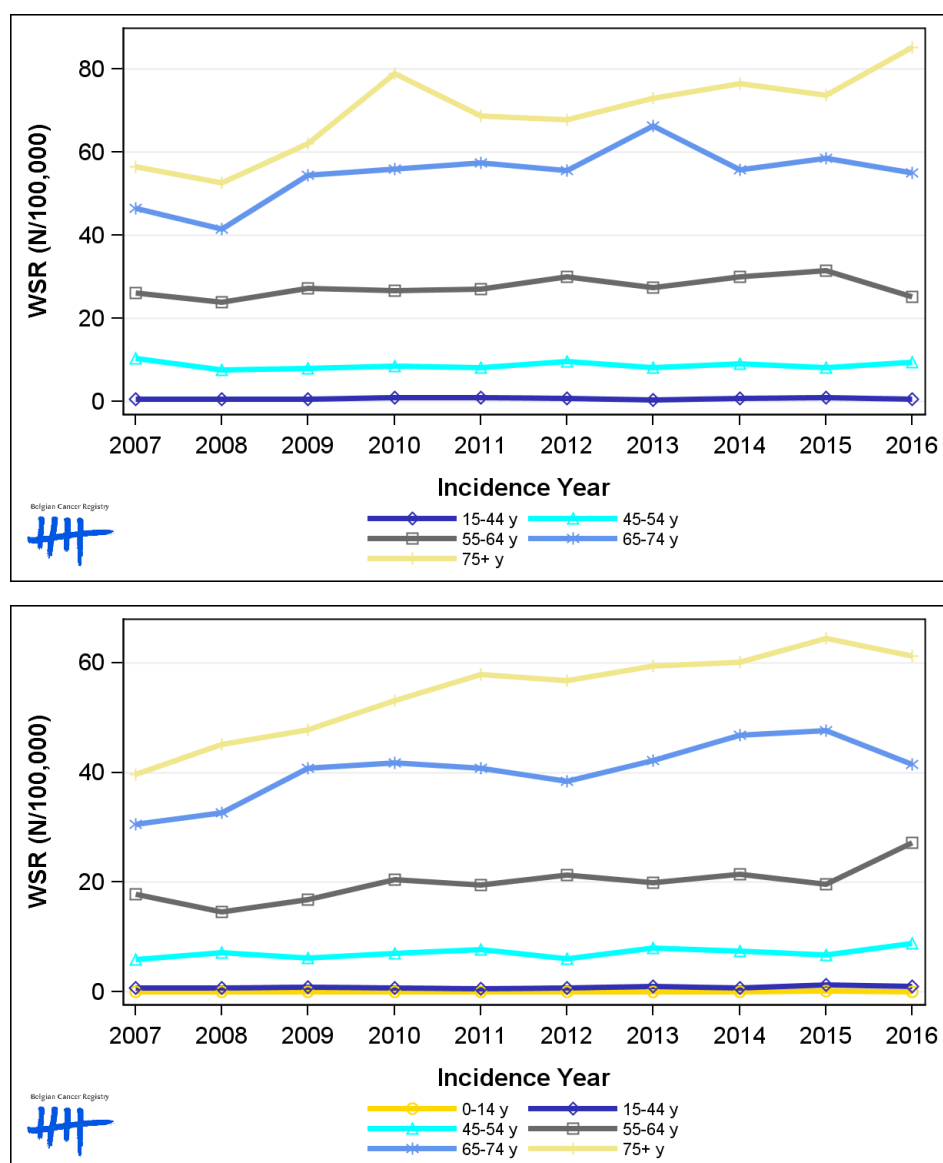
Table 5: Pancreatic Cancer: Number of new diagnoses and age-standardised incidence rates (WSR) by broad age groups and incidence year by sex, Belgium

	N											WSR									
	2007	2008	2009	2010	2011	2012	2013	2014	2015	2016	2007	2008	2009	2010	2011	2012	2013	2014	2015	2016	
Males																					
All ages	644	586	707	789	781	807	858	866	888	888	7.0	6.2	7.3	7.9	7.7	7.9	8.1	8.1	8.3	7.8	
0-14 y	0	0	0	0	0	0	0	0	0	0	0.0	0.0	0.0	0.0	0.0	0.0	0.0	0.0	0.0	0.0	
15-44 y	17	18	19	25	23	21	13	20	26	17	0.6	0.7	0.7	1.0	0.9	0.8	0.5	0.8	1.0	0.7	
45-54 y	81	60	65	69	68	81	69	77	68	81	10.5	7.7	8.0	8.5	8.2	9.7	8.2	9.2	8.1	9.6	
55-64 y	156	146	173	172	181	198	186	206	217	176	26.2	23.9	27.3	26.7	27.2	30.0	27.5	30.1	31.5	25.3	
65-74 y	201	182	230	242	254	252	308	266	285	277	46.5	41.6	54.6	55.9	57.4	55.6	66.4	55.8	58.5	55.1	
75+ y	189	180	220	281	255	255	282	297	292	337	56.6	52.7	62.1	78.9	68.9	67.9	73.1	76.6	73.8	85.3	
Females																					
All ages	546	580	663	737	758	745	813	841	882	891	4.7	4.8	5.4	5.9	5.9	5.8	6.2	6.4	6.6	6.8	
0-14 y	0	0	1	0	0	0	0	0	2	0	0.0	0.0	<0.1	0.0	0.0	0.0	0.0	0.0	0.2	0.0	
15-44 y	17	18	22	19	15	19	26	17	31	23	0.7	0.7	0.9	0.7	0.6	0.7	1.0	0.7	1.3	1.0	
45-54 y	45	56	50	57	63	50	66	62	57	71	5.9	7.2	6.3	7.0	7.8	6.1	8.0	7.5	6.8	8.8	
55-64 y	106	91	109	135	133	146	137	148	139	194	17.8	14.5	16.8	20.5	19.5	21.3	19.9	21.4	19.6	27.1	
65-74 y	159	162	205	215	205	197	220	249	257	229	30.6	32.6	40.8	41.8	40.8	38.5	42.2	46.9	47.6	41.5	
75+ y	219	253	276	311	342	333	364	365	396	374	39.6	45.1	47.8	53.1	57.8	56.8	59.4	60.1	64.4	61.2	

N=Number of invasive tumours

WSR=Age-Standardised Rate, using the World Standard Population (N/100,000 person-years)

Figure 5: Pancreatic Cancer: Age-standardised incidence rates (WSR) versus incidence year by broad age groups for males (top) and females (bottom), Belgium



2. Relative survival

Table 6: Pancreatic Cancer: 5-year relative survival proportion by sex, age group and region, Belgium 2012-2016

	5-year relative survival 2012-2016 (%)					
	Males			Females		
	N at risk	estimate	95% CI	N at risk	estimate	95% CI
Overall	4,273	12.3	[11.2, 13.7]	4,152	12.6	[11.4, 14.0]
Age group						
15-59 years	856	19.6	[16.7, 22.8]	737	25.9	[22.3, 29.7]
60-74 years	1,965	12.7	[10.9, 14.7]	1,585	13.4	[11.4, 15.7]
75+ years	1,452	7.0	[5.2, 9.3]	1,830	6.1	[4.7, 7.8]
Region						
Brussels-Capital Region	345	9.0	[5.8, 13.3]	364	11.3	[7.6, 16.1]
Flemish Region	2,497	13.3	[11.7, 15.1]	2,389	13.5	[11.9, 15.3]
Walloon Region	1,431	11.5	[9.6, 13.8]	1,399	11.3	[9.3, 13.6]

Figure 6: Pancreatic Cancer: relative survival proportion by sex, Belgium 2012-2016

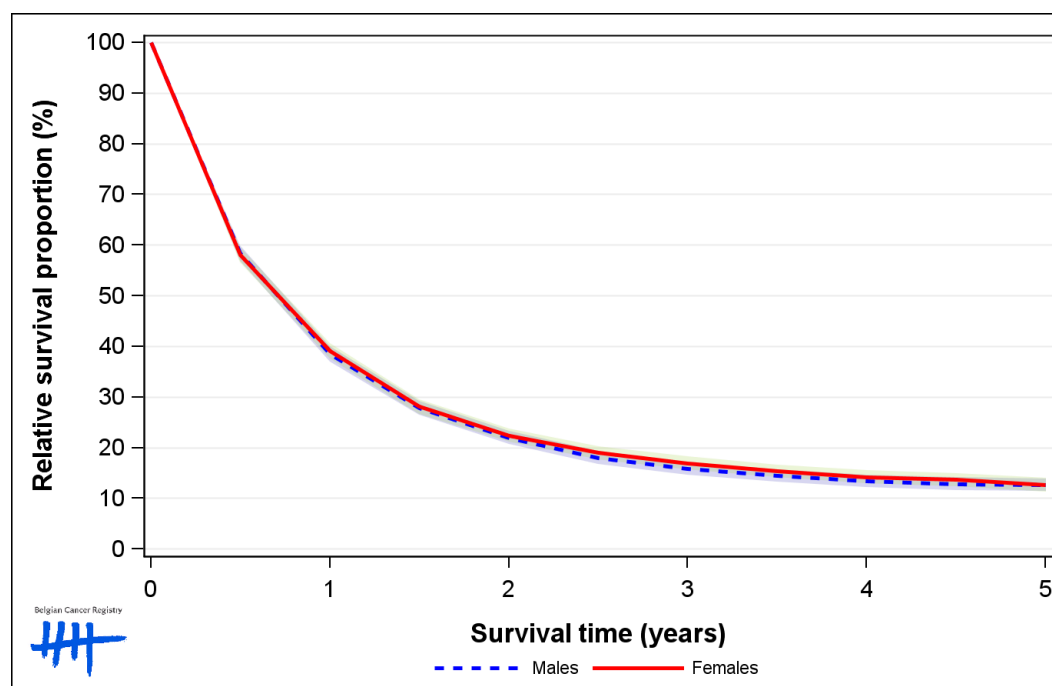


Figure 7: Pancreatic Cancer: relative survival proportion by age group in males, Belgium 2012-2016

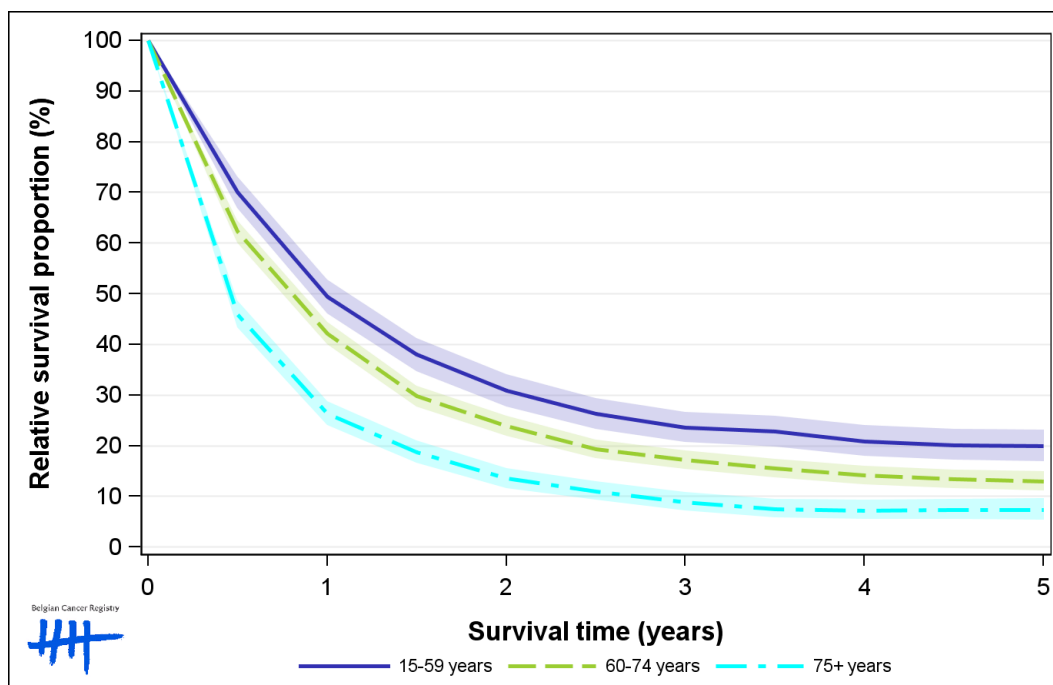


Figure 8: Pancreatic Cancer: relative survival proportion by age group in females, Belgium 2012-2016

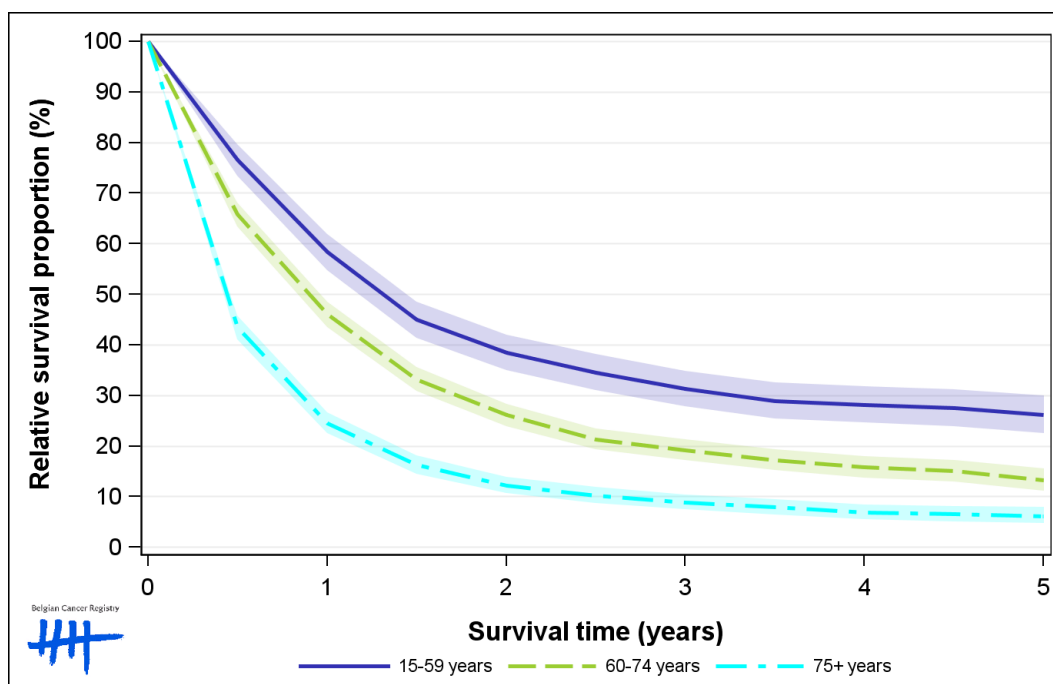


Figure 9: Pancreatic Cancer: relative survival proportion by region in males, Belgium 2012-2016

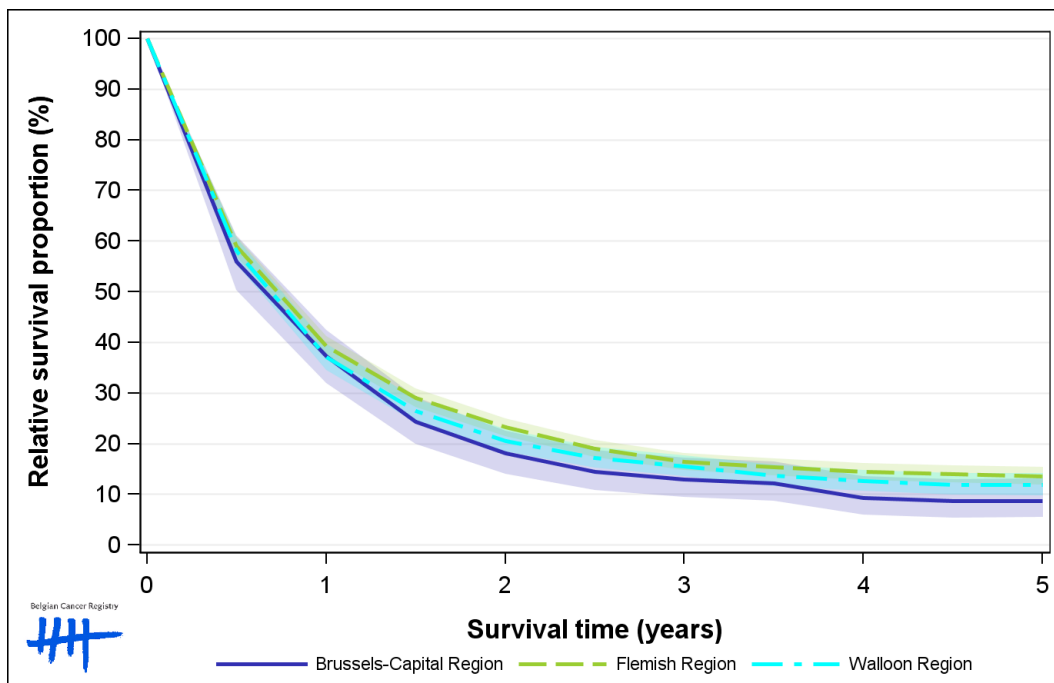


Figure 10: Pancreatic Cancer: relative survival proportion by region in females, Belgium 2012-2016

