

Belgian Cancer Registry



# Cancer Fact Sheet **Ovarian Cancer**

ICD10 : C56

**Belgium 2016**

# 1. Cancer Incidence

## 1.1. Number of new diagnoses and incidence rates

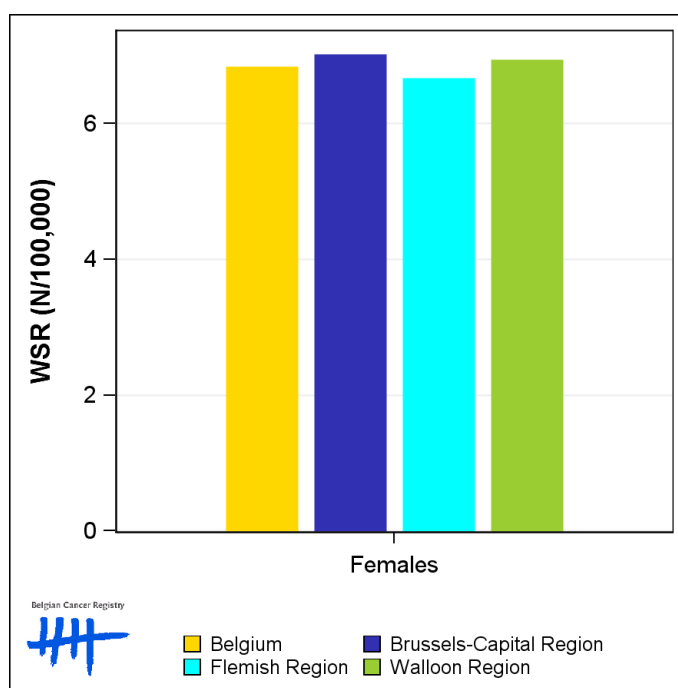
**Table 1:** Ovarian Cancer: Average age at diagnosis, number of new cancer diagnoses (N), crude rate (CR), age-standardised incidence rates (ESR and WSR) and cumulative risk by region, 2016

| Females                 | Age (years) | N          | CR          | ESR        | WSR        | CRi         |
|-------------------------|-------------|------------|-------------|------------|------------|-------------|
| <b>Belgium</b>          | <b>65.6</b> | <b>752</b> | <b>13.1</b> | <b>9.4</b> | <b>6.8</b> | <b>0.79</b> |
| Brussels-Capital Region | 61.6        | 66         | 10.9        | 9.6        | 7.0        | 0.70        |
| Flemish Region          | 66.5        | 445        | 13.6        | 9.3        | 6.7        | 0.79        |
| Walloon Region          | 65.1        | 241        | 13.1        | 9.5        | 6.9        | 0.78        |

CR=Crude (all ages) Rate (N/100,000 person-years)  
ESR=Age-Standardised Rate, using the European Standard Population (N/100,000 person-years)  
WSR=Age-Standardised Rate, using the World Standard Population (N/100,000 person-years)  
CRi=Cumulative Risk for 0-74 years (%)



**Figure 1:** Ovarian Cancer: Age-standardised incidence rates by region, 2016



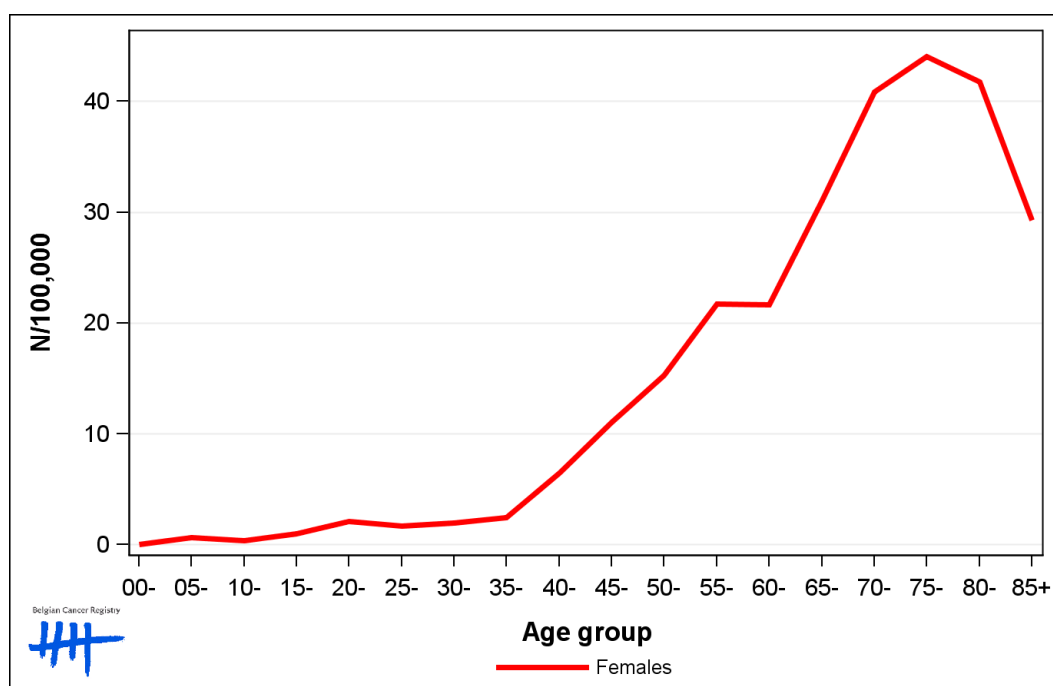
## 1.2. Age-specific incidence rates

**Table 2:** Ovarian Cancer: Age-specific incidence rates, crude rate (CR) and age-standardised incidence rates (ESR and WSR), Belgium 2016

|         | 00- | 05- | 10- | 15- | 20- | 25- | 30- | 35- | 40- | 45-  | 50-  | 55-  | 60-  | 65-  | 70-  | 75-  | 80-  | 85+  | CR   | ESR | WSR |
|---------|-----|-----|-----|-----|-----|-----|-----|-----|-----|------|------|------|------|------|------|------|------|------|------|-----|-----|
| Females | 0.0 | 0.6 | 0.3 | 1.0 | 2.1 | 1.7 | 1.9 | 2.5 | 6.5 | 11.0 | 15.3 | 21.7 | 21.6 | 31.1 | 40.9 | 44.1 | 41.8 | 29.3 | 13.1 | 9.4 | 6.8 |

CR=Crude (all ages) Rate (N/100,000 person-years)  
 ESR=Age-Standardised Rate, using the European Standard Population (N/100,000 person-years)  
 WSR=Age-Standardised Rate, using the World Standard Population (N/100,000 person-years)

**Figure 2:** Ovarian Cancer: Age-specific incidence rates, 2016



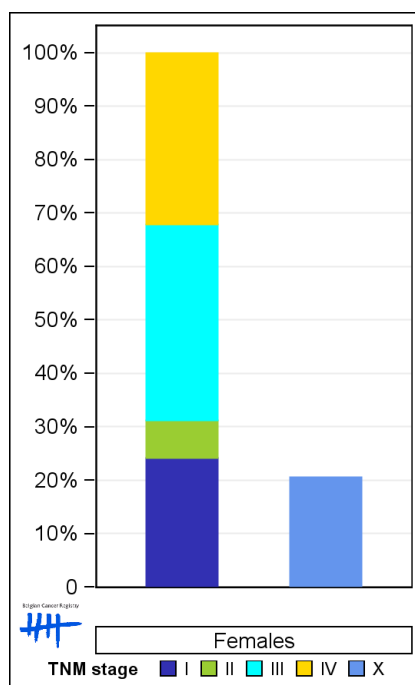
### 1.3. Combined stage

**Table 3:** Ovarian Cancer: Distribution of combined stage, Belgium 2016

|                | Stage I | Stage II | Stage III | Stage IV | Stage X | Stage NA | Total |
|----------------|---------|----------|-----------|----------|---------|----------|-------|
| <b>Females</b> |         |          |           |          |         |          |       |
| N              | 142     | 42       | 216       | 189      | 153     | 10       | 752   |
| %              | 18.9    | 5.6      | 28.7      | 25.1     | 20.3    | 1.3      | 100   |

Staging according to the TNM 7th edition (Ref.Sobin LH, Gospodarowicz MK, Wittekind Ch. TNM classification of malignant tumours, UICC 7th edition)  
 Combined TNM stage : compilation of pathological (pTNM) and clinical (cTNM) stage.  
 pTNM prevails over cTNM, except when cTNM stage is IV  
 Stage X: diagnoses with an unknown stage  
 Stage NA: diagnoses with a histological diagnosis where no stage can be evaluated (Not Applicable)

**Figure 3:** Ovarian Cancer: Bar chart of known combined stage, Belgium 2016



## 1.4. Trends in incidence

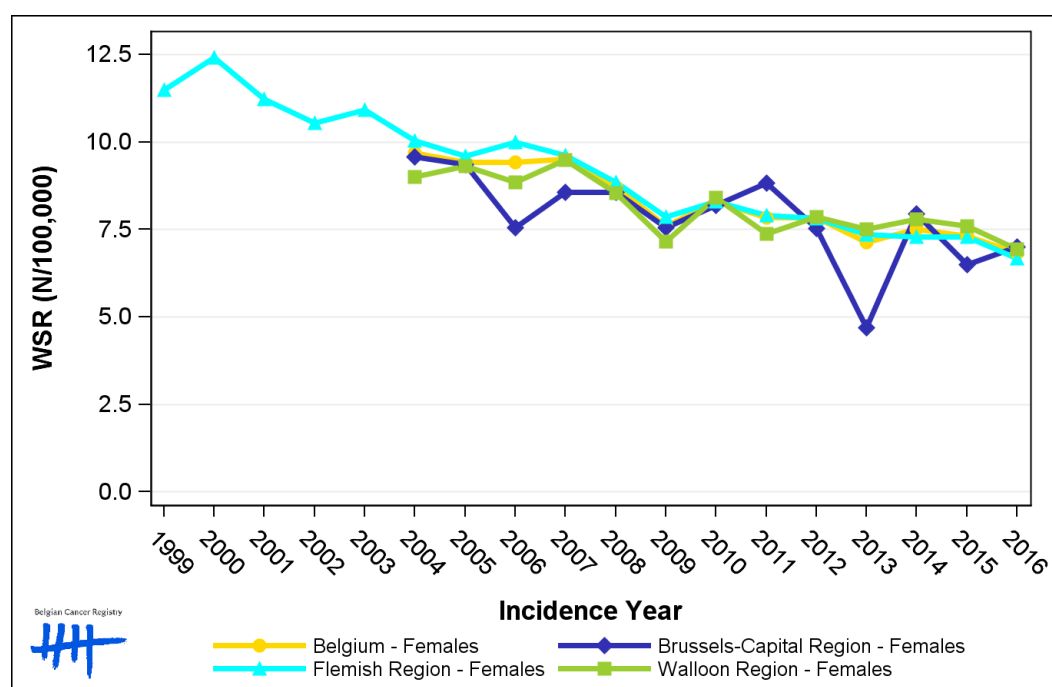
**Table 4:** Ovarian Cancer: Age-standardised incidence rates (WSR) and average annual percentage change (AAPC) by incidence year and region

| Females                 | 2002 | 2003 | 2004 | 2005 | 2006 | 2007 | 2008 | 2009 | 2010 | 2011 | 2012 | 2013 | 2014 | 2015 | 2016 | AAPC | 95% CI       |
|-------------------------|------|------|------|------|------|------|------|------|------|------|------|------|------|------|------|------|--------------|
| <b>Belgium</b>          |      |      | 9.7  | 9.4  | 9.4  | 9.5  | 8.7  | 7.6  | 8.3  | 7.8  | 7.8  | 7.1  | 7.5  | 7.3  | 6.8  | -2.9 | [-3.5; -2.2] |
| Brussels-Capital Region |      |      | 9.6  | 9.4  | 7.6  | 8.6  | 8.6  | 7.6  | 8.2  | 8.8  | 7.5  | 4.7  | 7.9  | 6.5  | 7.0  | -2.9 | [-5.3; -0.5] |
| Flemish Region          | 10.6 | 10.9 | 10.0 | 9.6  | 10.0 | 9.6  | 8.8  | 7.9  | 8.3  | 7.9  | 7.8  | 7.3  | 7.3  | 7.3  | 6.7  | -3.3 | [-3.8; -2.9] |
| Walloon Region          |      |      | 9.0  | 9.3  | 8.8  | 9.5  | 8.5  | 7.1  | 8.4  | 7.4  | 7.9  | 7.5  | 7.8  | 7.6  | 6.9  | -2.1 | [-3.1; -1.1] |

WSR=Age-Standardised Rate, using the World Standard Population (N/100,000 person-years)

AAPC = Average Annual Percentage Change over the 2004-2016 period (except for the Flemish region : 2002-2016).

**Figure 4:** Ovarian Cancer: Age-standardised incidence rates (WSR) by incidence year and region



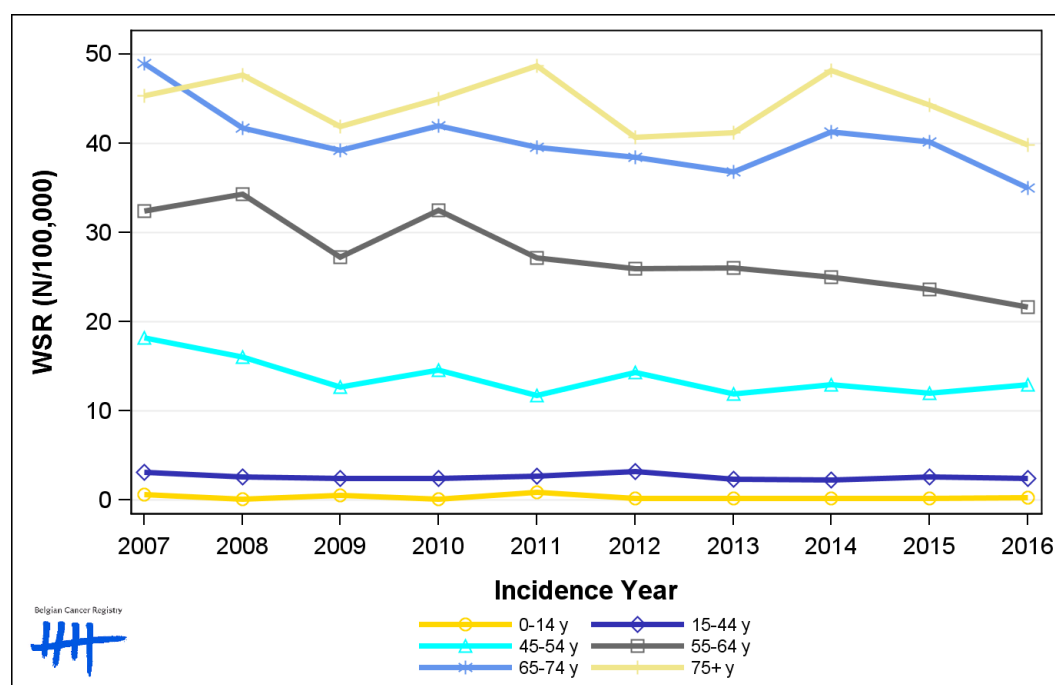
## 1.5. Incidence by broad age groups

**Table 5:** Ovarian Cancer: Number of new diagnoses and age-standardised incidence rates (WSR) by broad age groups and incidence year, Belgium

|                | N    |      |      |      |      |      |      |      |      |      | WSR  |      |      |      |      |      |      |      |      |      |
|----------------|------|------|------|------|------|------|------|------|------|------|------|------|------|------|------|------|------|------|------|------|
|                | 2007 | 2008 | 2009 | 2010 | 2011 | 2012 | 2013 | 2014 | 2015 | 2016 | 2007 | 2008 | 2009 | 2010 | 2011 | 2012 | 2013 | 2014 | 2015 | 2016 |
| <b>Females</b> |      |      |      |      |      |      |      |      |      |      |      |      |      |      |      |      |      |      |      |      |
| All ages       | 920  | 885  | 784  | 865  | 829  | 803  | 773  | 841  | 810  | 752  | 9.5  | 8.7  | 7.6  | 8.3  | 7.8  | 7.8  | 7.1  | 7.5  | 7.3  | 6.8  |
| 0-14 y         | 6    | 1    | 5    | 1    | 9    | 2    | 2    | 2    | 2    | 3    | 0.6  | 0.1  | 0.5  | 0.1  | 0.9  | 0.2  | 0.2  | 0.2  | 0.2  | 0.3  |
| 15-44 y        | 76   | 63   | 62   | 58   | 63   | 71   | 58   | 54   | 61   | 56   | 3.2  | 2.6  | 2.4  | 2.5  | 2.7  | 3.2  | 2.4  | 2.3  | 2.6  | 2.4  |
| 45-54 y        | 139  | 124  | 100  | 118  | 95   | 117  | 98   | 104  | 98   | 105  | 18.2 | 16.1 | 12.7 | 14.6 | 11.7 | 14.3 | 11.9 | 13.0 | 12.0 | 13.0 |
| 55-64 y        | 198  | 218  | 176  | 215  | 184  | 178  | 180  | 175  | 167  | 157  | 32.4 | 34.3 | 27.2 | 32.5 | 27.2 | 26.0 | 26.1 | 25.0 | 23.7 | 21.7 |
| 65-74 y        | 249  | 210  | 197  | 209  | 197  | 195  | 191  | 218  | 217  | 194  | 49.0 | 41.7 | 39.3 | 42.0 | 39.5 | 38.5 | 36.8 | 41.3 | 40.2 | 35.0 |
| 75+ y          | 252  | 269  | 244  | 264  | 281  | 240  | 244  | 288  | 265  | 237  | 45.4 | 47.6 | 41.9 | 45.0 | 48.7 | 40.7 | 41.2 | 48.2 | 44.3 | 39.8 |

N=Number of invasive tumours  
WSR=Age-Standardised Rate, using the World Standard Population (N/100,000 person-years)

**Figure 5:** Ovarian Cancer: Age-standardised incidence rates (WSR) versus incidence year by broad age groups, Belgium



Belgian Cancer Registry

## 2. Relative survival

**Table 6:** Ovarian Cancer: 5-year relative survival proportion by age group and region, Belgium 2012-2016

| 5-year relative survival<br>2012-2016 (%) |           |          |              |
|---|-----------|----------|--------------|
| Females                                   |           |          |              |
|   | N at risk | estimate | 95% CI       |
| <b>Overall</b>                            | 3,936     | 44.3     | [42.2, 46.4] |
| <b>Age group</b>                          |           |          |              |
| 15-44 years                               | 296       | 78.0     | [72.0, 83.0] |
| 45-69 years                               | 1,888     | 52.9     | [50.0, 55.8] |
| 70+ years                                 | 1,752     | 27.9     | [24.8, 31.1] |
| <b>Region</b>                             |           |          |              |
| Brussels-Capital Region                   | 307       | 51.5     | [43.7, 59.2] |
| Flemish Region                            | 2,350     | 45.2     | [42.6, 47.9] |
| Walloon Region                            | 1,279     | 40.8     | [37.3, 44.5] |

**Figure 6:** Ovarian Cancer: relative survival proportion, Belgium 2012-2016

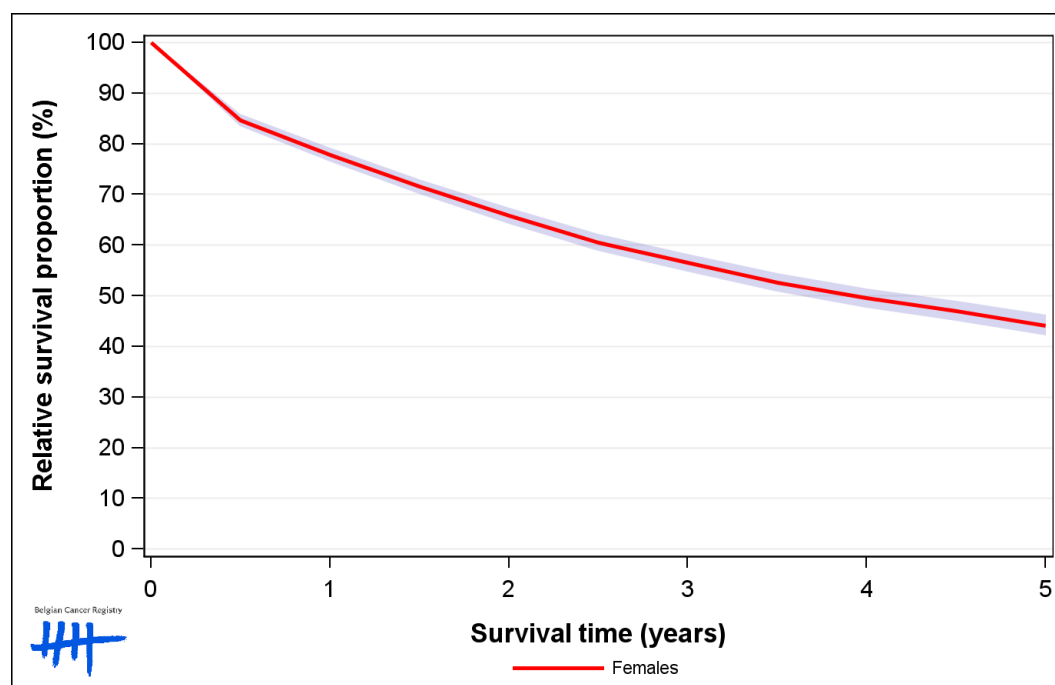


Figure 7: Ovarian Cancer: relative survival proportion by age group, Belgium 2012-2016

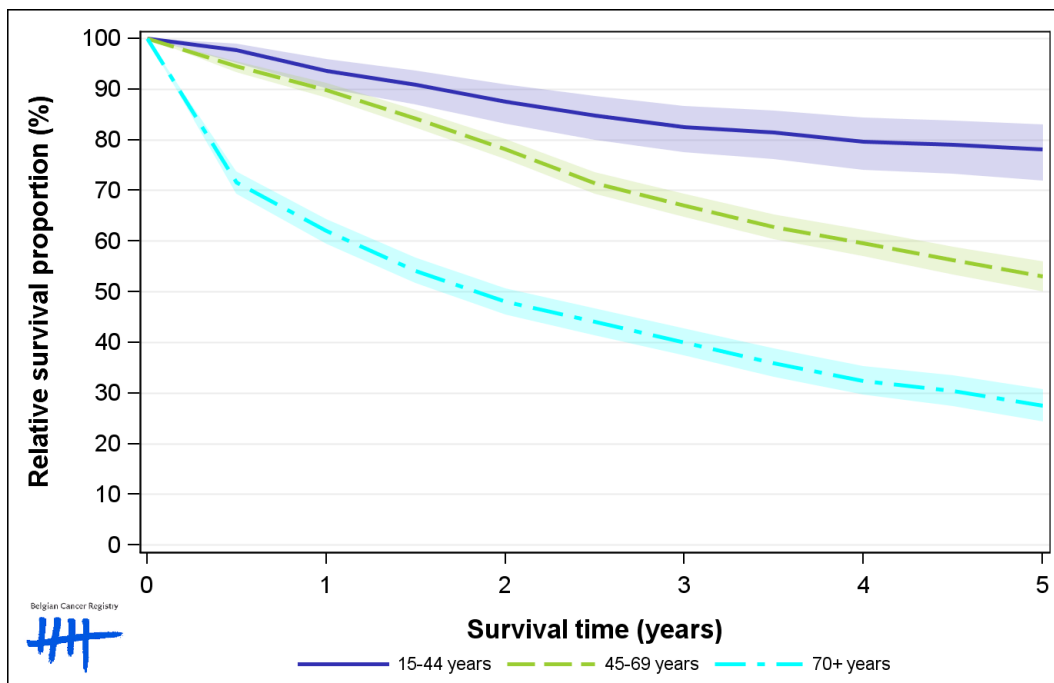


Figure 8: Ovarian Cancer: relative survival proportion by region, Belgium 2012-2016

