

Belgian Cancer Registry



Cancer Fact Sheet **Oesophagus Cancer**

ICD10 : C15-16.0

Belgium 2016

1. Cancer Incidence

1.1. Number of new diagnoses and incidence rates

Table 1: Oesophageal cancer: Average age at diagnosis, number of new cancer diagnoses (N), crude rate (CR), age-standardised incidence rates (ESR and WSR) and cumulative risk by sex and region, 2016

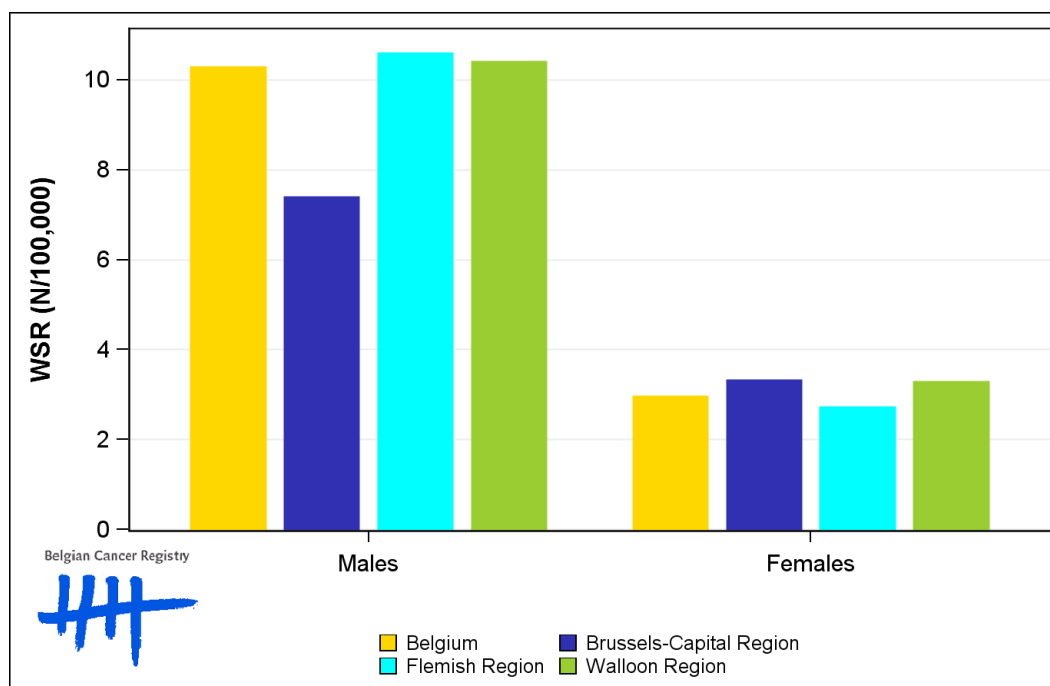
Males	Age (years)	N	CR	ESR	WSR	CRi
Belgium	67.8	1,099	19.8	15.0	10.3	1.29
Brussels-Capital Region	67.3	57	9.8	10.7	7.4	1.04
Flemish Region	68.0	698	21.8	15.4	10.6	1.33
Walloon Region	67.3	344	19.6	15.2	10.4	1.29

Females	Age (years)	N	CR	ESR	WSR	CRi
Belgium	71.1	392	6.8	4.3	3.0	0.36
Brussels-Capital Region	68.3	32	5.3	4.7	3.3	0.45
Flemish Region	72.2	224	6.8	4.0	2.7	0.33
Walloon Region	69.8	136	7.4	4.8	3.3	0.41

CR=Crude (all ages) Rate (N/100,000 person-years)
 ESR=Age-Standardised Rate, using the European Standard Population (N/100,000 person-years)
 WSR=Age-Standardised Rate, using the World Standard Population (N/100,000 person-years)
 CRi=Cumulative Risk for 0-74 years (%)



Figure 1: Oesophageal cancer: Age-standardised incidence rates by sex and region, 2016



1.2. Age-specific incidence rates

Table 2: Oesophageal cancer: Age-specific incidence rates, crude rate (CR) and age-standardised incidence rates (ESR and WSR) by sex, Belgium 2016

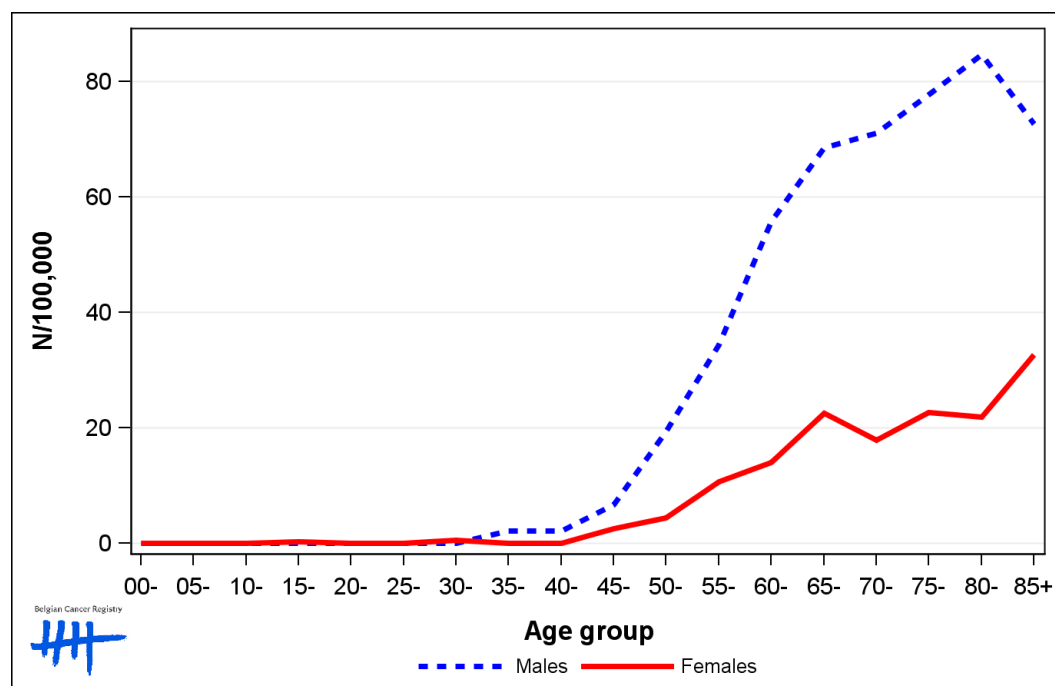
	00-	05-	10-	15-	20-	25-	30-	35-	40-	45-	50-	55-	60-	65-	70-	75-	80-	85+	CR	ESR	WSR
Males	0.0	0.0	0.0	0.0	0.0	0.0	0.0	2.2	2.1	6.7	19.4	34.5	55.8	68.6	71.1	77.7	84.7	72.7	19.8	15.0	10.3
Females	0.0	0.0	0.0	0.3	0.0	0.0	0.6	0.0	0.0	2.6	4.4	10.7	14.0	22.5	17.9	22.7	21.9	32.7	6.8	4.3	3.0

CR=Crude (all ages) Rate (N/100,000 person-years)

ESR=Age-Standardised Rate, using the European Standard Population (N/100,000 person-years)

WSR=Age-Standardised Rate, using the World Standard Population (N/100,000 person-years)

Figure 2: Oesophageal cancer: Age-specific incidence rates by sex, 2016



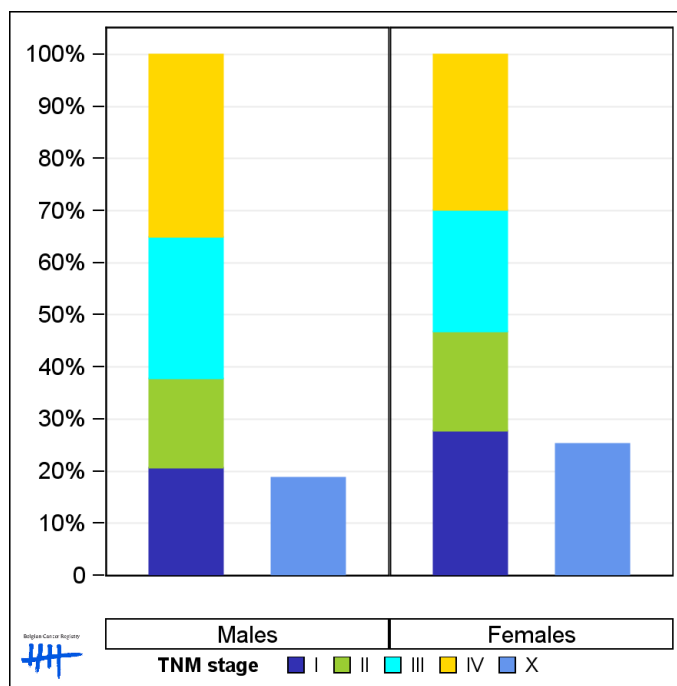
1.3. Combined stage

Table 3: Oesophageal cancer: Distribution of combined stage by sex, Belgium 2016

	Stage I	Stage II	Stage III	Stage IV	Stage X	Stage NA	Total
Males							
N	184	152	241	310	205	7	1,099
%	16.7	13.8	21.9	28.2	18.7	0.6	100
Females							
N	80	55	67	86	97	7	392
%	20.4	14.0	17.1	21.9	24.7	1.8	100

Staging according to the TNM 7th edition (Ref:Sobin LH, Gospodarowicz MK, Wittekind Ch. TNM classification of malignant tumours, UICC 7th edition)
 Combined TNM stage : compilation of pathological (pTNM) and clinical (cTNM) stage.
 pTNM prevails over cTNM, except when cTNM stage is IV
 Stage X: diagnoses with an unknown stage
 Stage NA: diagnoses with a histological diagnosis where no stage can be evaluated (Not Applicable)

Figure 3: Oesophageal cancer: Bar chart of known combined stage by sex, Belgium 2016



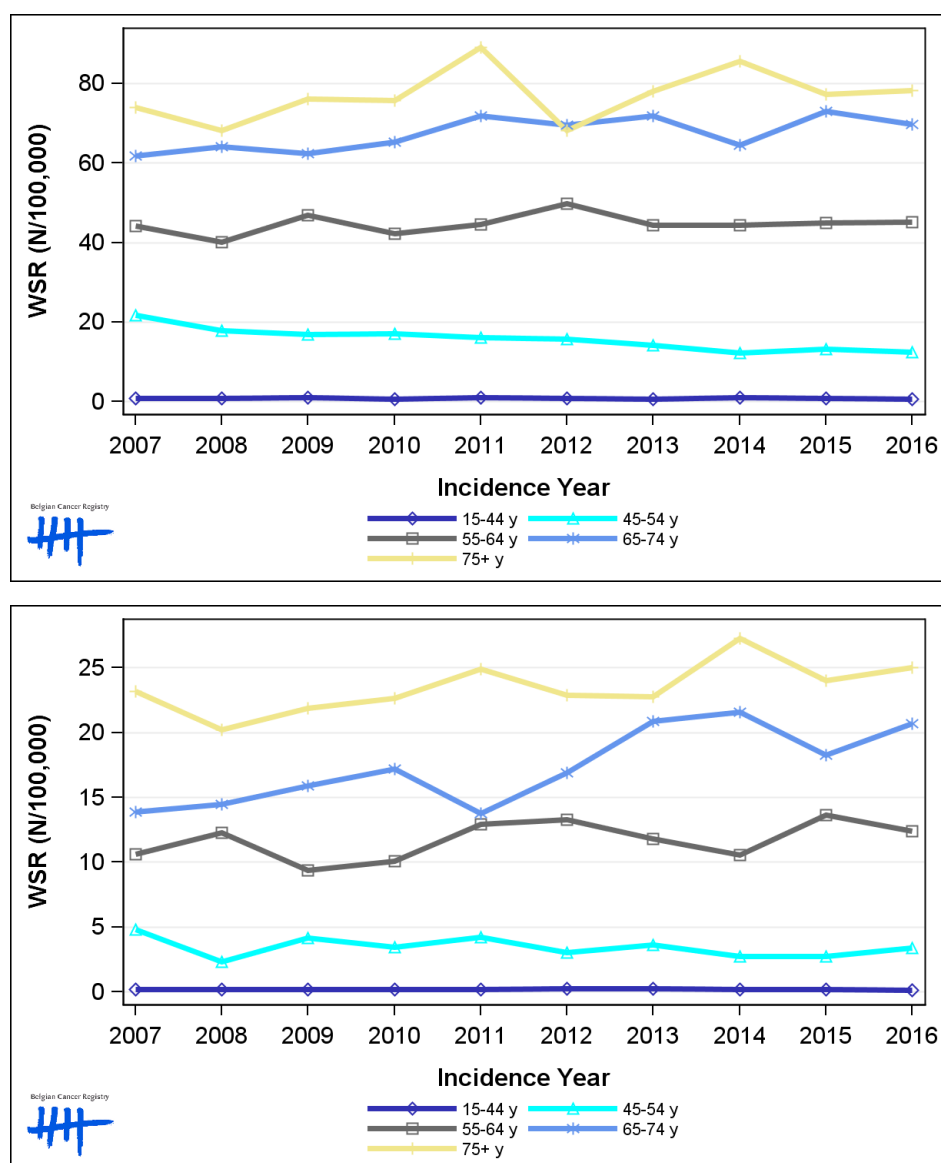
1.5. Incidence by broad age groups

Table 5: Oesophageal cancer: Number of new diagnoses and age-standardised incidence rates (WSR) by broad age groups and incidence year by sex, Belgium

	N										WSR									
	2007	2008	2009	2010	2011	2012	2013	2014	2015	2016	2007	2008	2009	2010	2011	2012	2013	2014	2015	2016
Males																				
All ages	971	915	989	986	1,088	1,053	1,068	1,068	1,099	1,099	10.9	10.1	10.7	10.3	11.1	10.9	10.5	10.3	10.6	10.3
0-14 y	0	0	0	0	0	0	0	0	0	0	0.0	0.0	0.0	0.0	0.0	0.0	0.0	0.0	0.0	0.0
15-44 y	24	23	28	16	29	25	18	25	22	16	0.9	0.8	1.0	0.6	1.0	0.9	0.7	1.0	0.8	0.6
45-54 y	168	140	135	141	134	131	119	105	111	107	21.7	17.8	16.9	17.2	16.1	15.7	14.1	12.3	13.3	12.5
55-64 y	265	249	297	274	298	332	300	302	310	316	44.1	40.2	46.9	42.2	44.6	49.7	44.3	44.4	45.0	45.1
65-74 y	263	277	270	285	310	312	333	306	355	349	61.8	64.0	62.3	65.3	71.7	69.5	71.8	64.6	73.0	69.6
75+ y	251	226	259	270	317	253	298	330	301	311	74.0	68.2	76.1	75.7	89.0	68.2	78.0	85.5	77.2	78.2
Females																				
All ages	310	292	306	322	348	358	370	385	375	392	2.6	2.5	2.5	2.6	2.8	2.8	3.0	2.9	2.9	3.0
0-14 y	0	0	0	0	0	0	0	0	0	0	0.0	0.0	0.0	0.0	0.0	0.0	0.0	0.0	0.0	0.0
15-44 y	6	6	5	6	6	6	7	5	5	3	0.2	0.2	0.2	0.2	0.2	0.2	0.3	0.2	0.2	0.1
45-54 y	37	18	33	28	35	25	30	23	23	28	4.8	2.3	4.2	3.5	4.2	3.0	3.6	2.7	2.7	3.4
55-64 y	65	78	61	67	88	92	81	73	96	89	10.6	12.3	9.4	10.1	12.9	13.3	11.8	10.6	13.7	12.4
65-74 y	70	73	77	85	67	85	107	114	98	113	13.9	14.5	15.9	17.2	13.7	16.9	20.9	21.5	18.3	20.7
75+ y	132	117	130	136	152	150	145	170	153	159	23.2	20.2	21.9	22.6	24.9	22.9	22.7	27.3	24.0	25.0

N=Number of invasive tumours
WSR=Age-Standardised Rate, using the World Standard Population (N/100,000 person-years)

Figure 5: Oesophageal cancer: Age-standardised incidence rates (WSR) versus incidence year by broad age groups for males (top) and females (bottom), Belgium



2. Relative survival

Table 6: Oesophageal cancer: 5-year relative survival proportion by sex, age group and region, Belgium 2012-2016

	5-year relative survival 2012-2016 (%)					
	Males			Females		
	N at risk	estimate	95% CI	N at risk	estimate	95% CI
Overall	5,359	24.8	[23.4, 26.4]	1,869	26.6	[24.2, 29.3]
Age group						
15-59 years	1,338	29.6	[26.8, 32.5]	342	35.4	[29.6, 41.4]
60-74 years	2,536	26.7	[24.6, 29.0]	753	31.3	[27.4, 35.3]
75+ years	1,485	16.3	[13.4, 19.6]	774	17.9	[14.2, 22.1]
Region						
Brussels-Capital Region	351	26.5	[20.8, 32.7]	148	24.0	[16.4, 32.8]
Flemish Region	3,277	24.4	[22.6, 26.4]	1,056	26.7	[23.4, 30.2]
Walloon Region	1,731	25.3	[22.8, 28.1]	665	27.1	[23.0, 31.4]

Figure 6: Oesophageal cancer: relative survival proportion by sex, Belgium 2012-2016

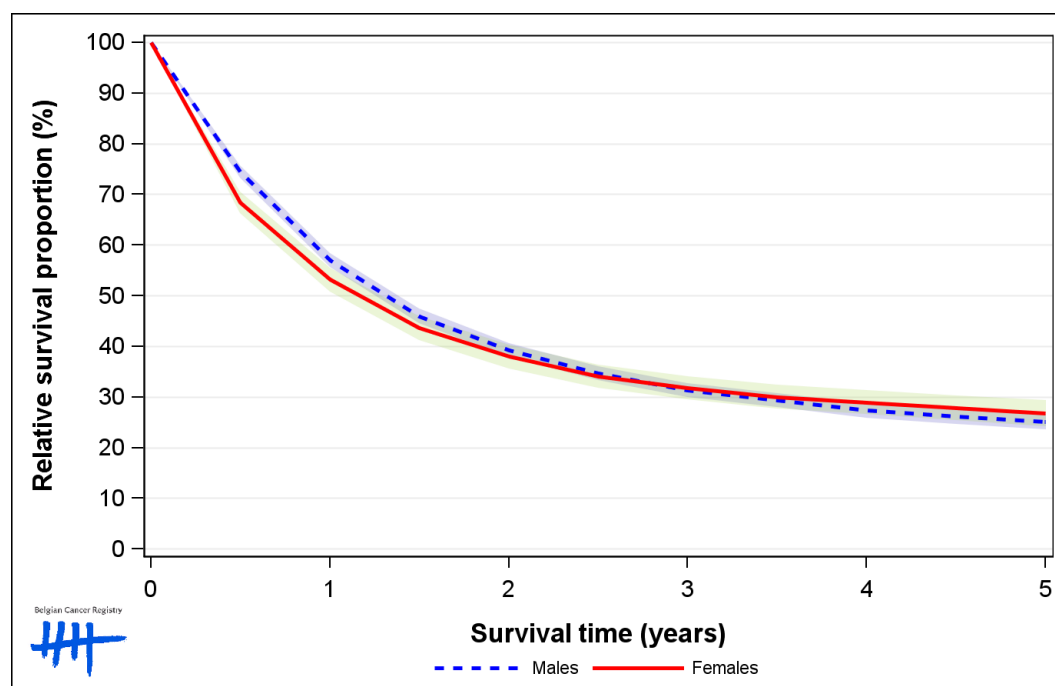


Figure 7: Oesophageal cancer: relative survival proportion by age group in males, Belgium 2012-2016

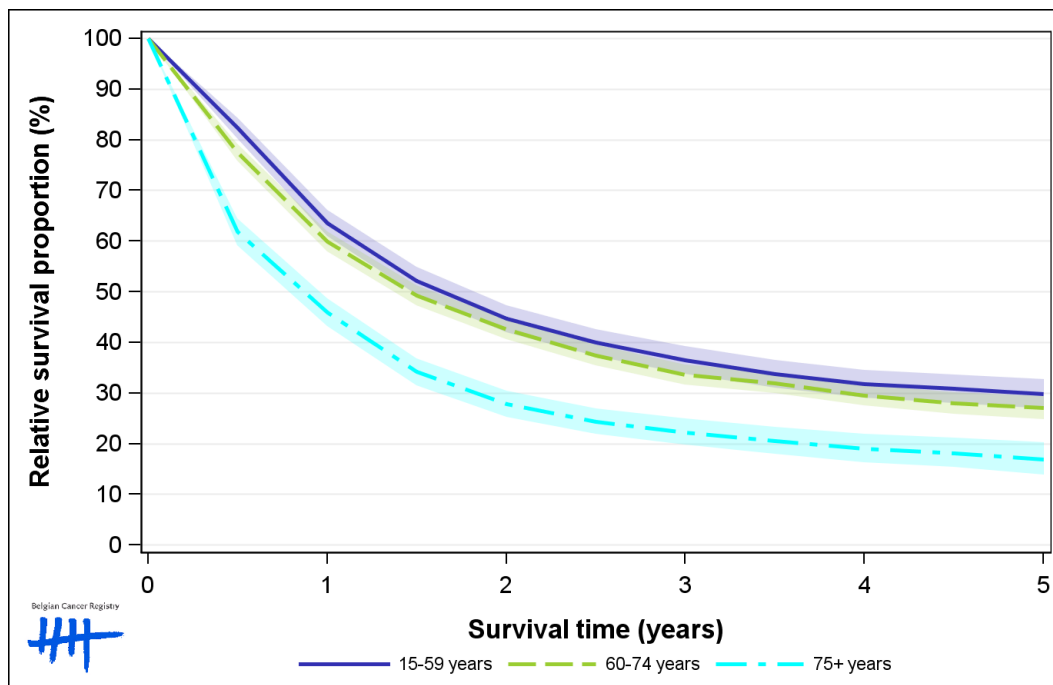


Figure 8: Oesophageal cancer: relative survival proportion by age group in females, Belgium 2012-2016

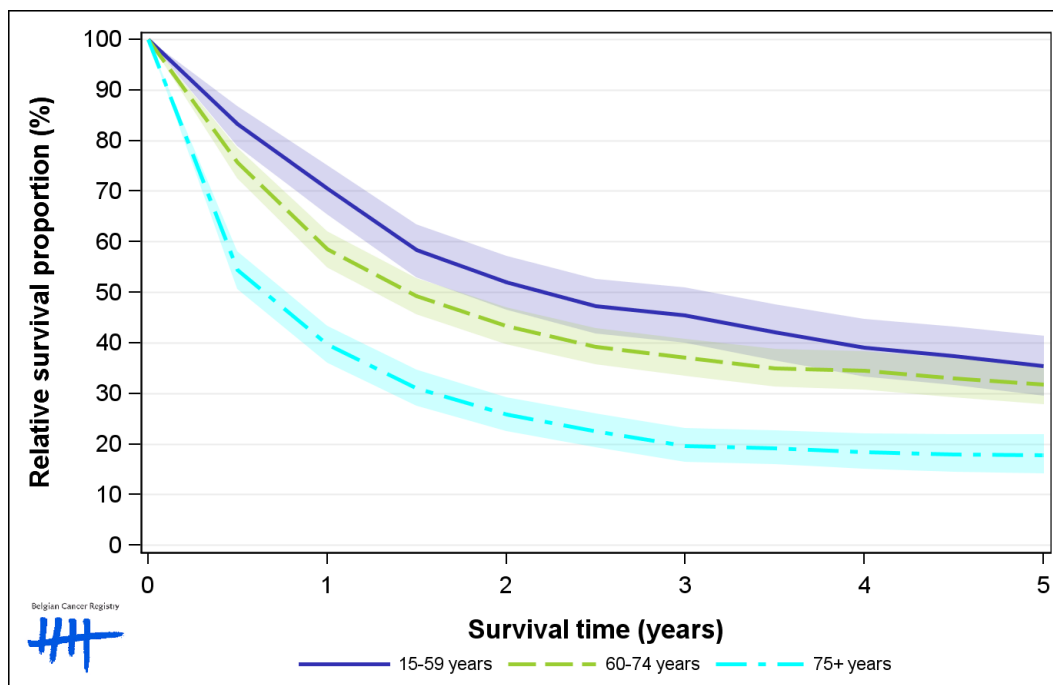


Figure 9: Oesophageal cancer: relative survival proportion by region in males, Belgium 2012-2016

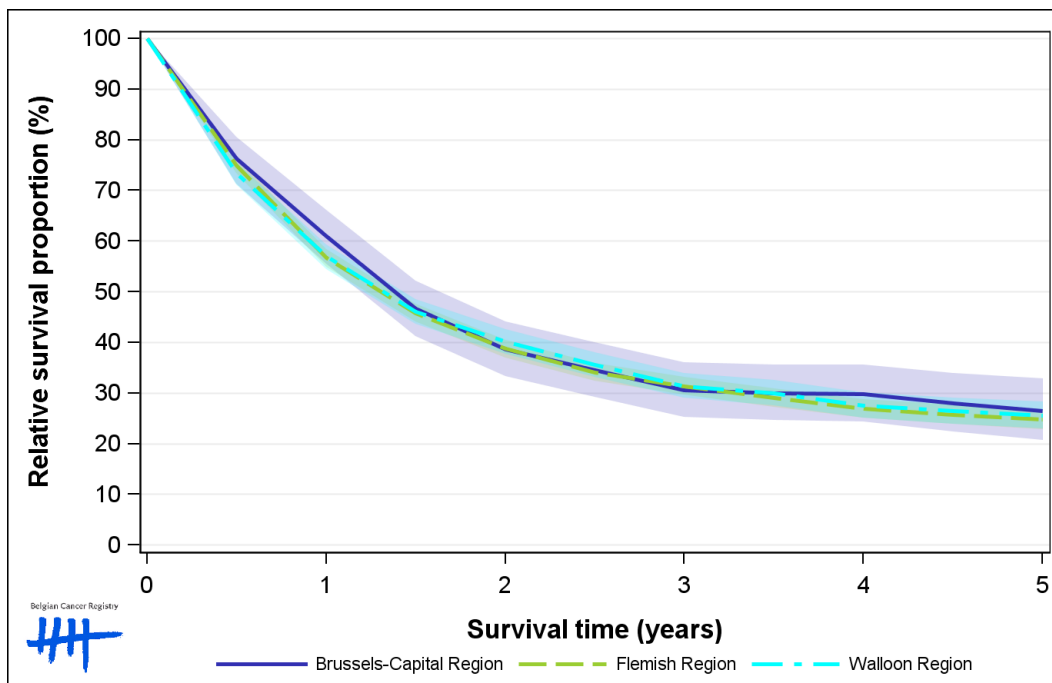


Figure 10: Oesophageal cancer: relative survival proportion by region in females, Belgium 2012-2016

