

Belgian Cancer Registry



Cancer Fact Sheet **Malignant Melanoma**

ICD10 : C43

Belgium 2016

1. Cancer Incidence

1.1. Number of new diagnoses and incidence rates

Table 1: Malignant Melanoma: Average age at diagnosis, number of new cancer diagnoses (N), crude rate (CR), age-standardised incidence rates (ESR and WSR) and cumulative risk by sex and region, 2016

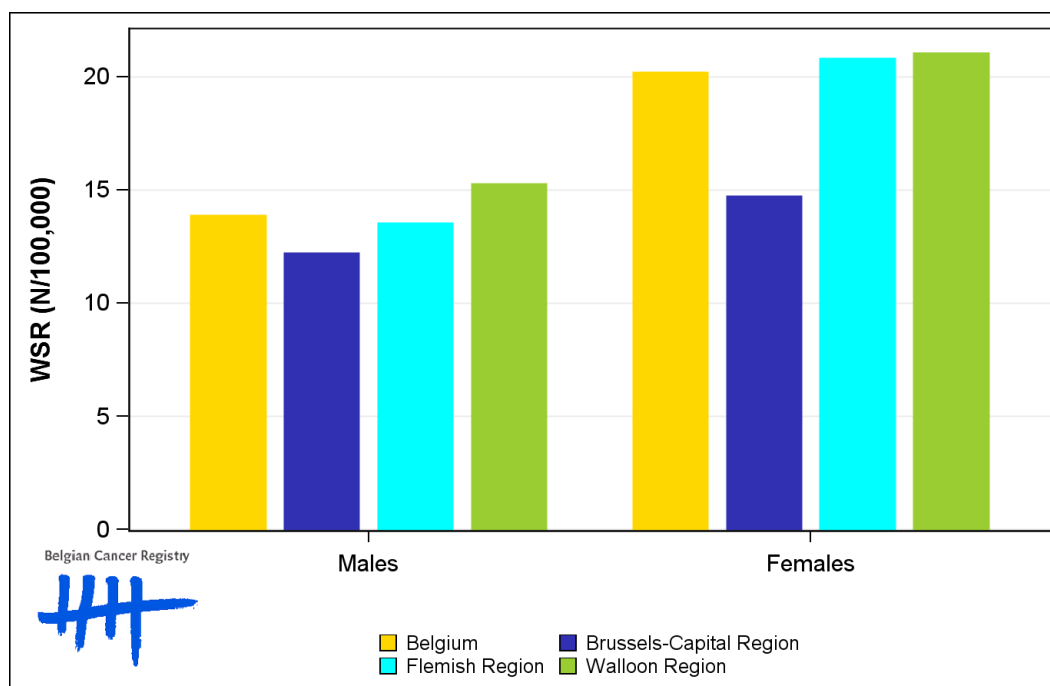
Males	Age (years)	N	CR	ESR	WSR	CRi
Belgium	61.8	1,283	23.2	18.9	13.9	1.55
Brussels-Capital Region	64.4	98	16.9	17.7	12.2	1.47
Flemish Region	63.1	777	24.3	18.6	13.5	1.53
Walloon Region	58.8	408	23.2	20.0	15.3	1.63

Females	Age (years)	N	CR	ESR	WSR	CRi
Belgium	58.0	1,786	31.2	25.8	20.2	2.05
Brussels-Capital Region	61.2	138	22.7	19.9	14.7	1.55
Flemish Region	58.8	1,086	33.1	26.8	20.8	2.15
Walloon Region	55.7	562	30.5	26.2	21.0	2.06

CR=Crude (all ages) Rate (N/100,000 person-years)
 ESR=Age-Standardised Rate, using the European Standard Population (N/100,000 person-years)
 WSR=Age-Standardised Rate, using the World Standard Population (N/100,000 person-years)
 CRi=Cumulative Risk for 0-74 years (%)



Figure 1: Malignant Melanoma: Age-standardised incidence rates by sex and region, 2016



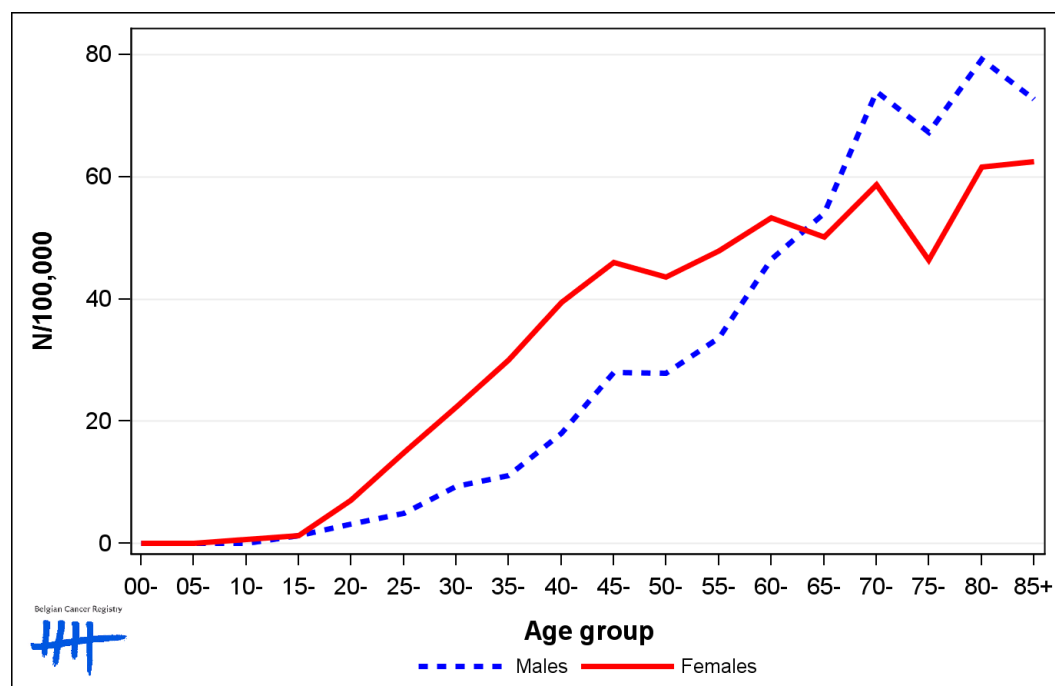
1.2. Age-specific incidence rates

Table 2: Malignant Melanoma: Age-specific incidence rates, crude rate (CR) and age-standardised incidence rates (ESR and WSR) by sex, Belgium 2016

	00-	05-	10-	15-	20-	25-	30-	35-	40-	45-	50-	55-	60-	65-	70-	75-	80-	85+	CR	ESR	WSR
Males	0.0	0.0	0.0	1.2	3.2	5.0	9.4	11.1	18.0	28.0	27.9	33.7	46.5	54.1	74.0	67.3	79.2	72.7	23.2	18.9	13.9
Females	0.0	0.0	0.7	1.3	7.1	14.9	22.3	30.0	39.5	46.0	43.6	47.8	53.2	50.1	58.8	46.3	61.6	62.5	31.2	25.8	20.2

CR=Crude (all ages) Rate (N/100,000 person-years)
 ESR=Age-Standardised Rate, using the European Standard Population (N/100,000 person-years)
 WSR=Age-Standardised Rate, using the World Standard Population (N/100,000 person-years)

Figure 2: Malignant Melanoma: Age-specific incidence rates by sex, 2016



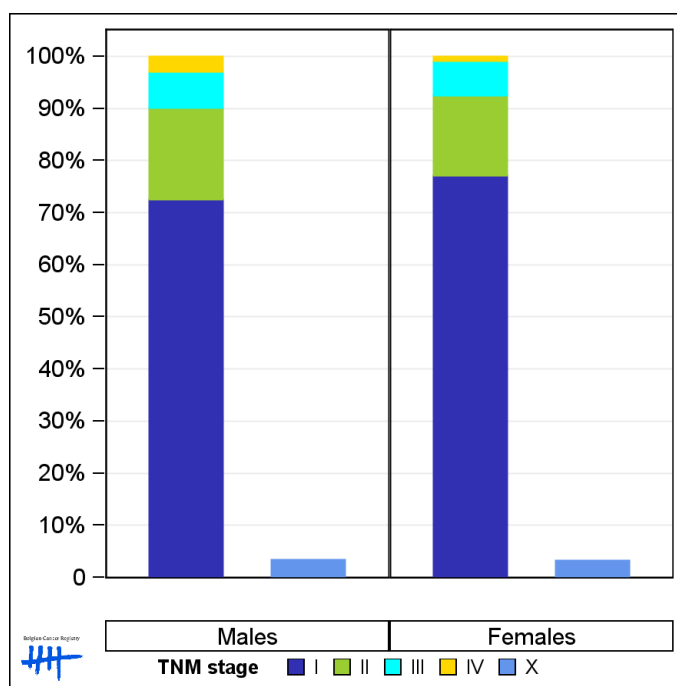
1.3. Combined stage

Table 3: Malignant Melanoma: Distribution of combined stage by sex, Belgium 2016

	Stage I	Stage II	Stage III	Stage IV	Stage X	Stage NA	Total
Males							
N	868	210	82	36	42	45	1,283
%	67.7	16.4	6.4	2.8	3.3	3.5	100
Females							
N	1,307	261	111	16	56	35	1,786
%	73.2	14.6	6.2	0.9	3.1	2.0	100

Staging according to the TNM 7th edition (Ref:Sobin LH, Gospodarowicz MK, Wittekind Ch. TNM classification of malignant tumours, UICC 7th edition)
 Combined TNM stage : compilation of pathological (pTNM) and clinical (cTNM) stage.
 pTNM prevails over cTNM, except when cTNM stage is IV
 Stage X: diagnoses with an unknown stage
 Stage NA: diagnoses with a histological diagnosis where no stage can be evaluated (Not Applicable)

Figure 3: Malignant Melanoma: Bar chart of known combined stage by sex, Belgium 2016



1.4. Trends in incidence

Table 4: Malignant Melanoma: Age-standardised incidence rates (WSR) and average annual percentage change (AAPC) by incidence year, sex and region

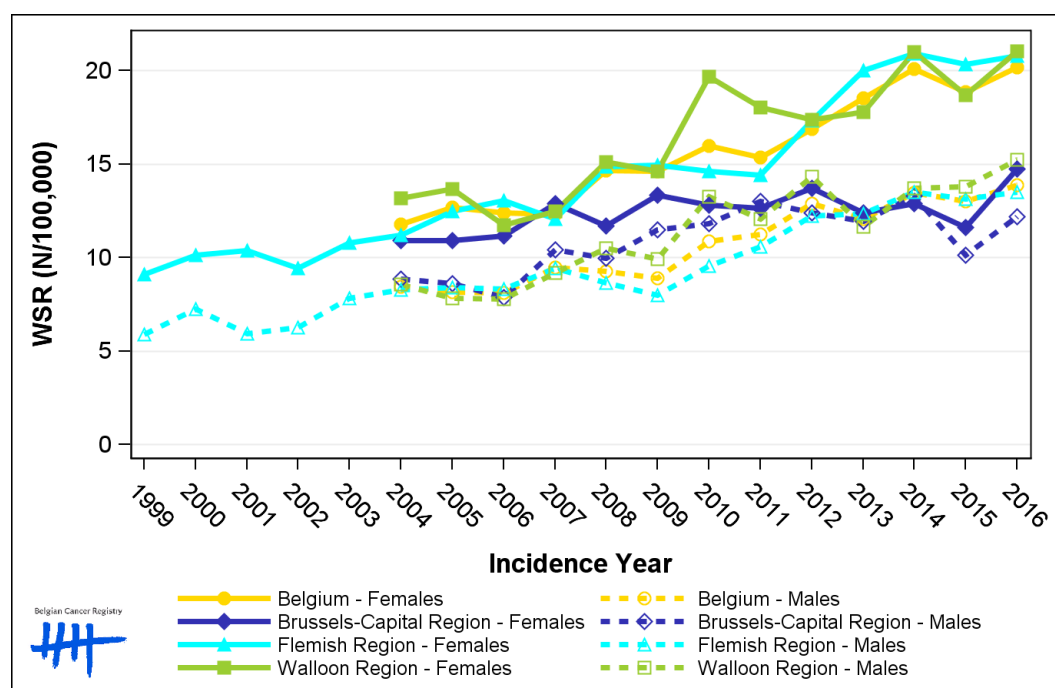
Males	2002	2003	2004	2005	2006	2007	2008	2009	2010	2011	2012	2013	2014	2015	2016	AAPC	95% CI
Belgium			8.4	8.2	8.1	9.5	9.3	8.9	10.9	11.2	12.9	12.1	13.5	13.0	13.9	5.1	[4.0; 6.1]
Brussels-Capital Region			8.9	8.6	7.9	10.4	10.0	11.5	11.8	13.0	12.4	11.9	13.3	10.2	12.2	3.0	[1.5; 4.5]
Flemish Region	6.3	7.8	8.3	8.4	8.3	9.4	8.7	8.0	9.6	10.6	12.2	12.3	13.5	13.1	13.5	5.1	[4.0; 6.2]
Walloon Region			8.6	7.8	7.8	9.2	10.5	9.9	13.3	12.1	14.3	11.7	13.7	13.8	15.3	5.7	[4.0; 7.4]

Females	2002	2003	2004	2005	2006	2007	2008	2009	2010	2011	2012	2013	2014	2015	2016	AAPC	95% CI
Belgium			11.8	12.7	12.4	12.3	14.7	14.6	16.0	15.4	16.9	18.5	20.1	18.9	20.2	4.9	[4.1; 5.7]
Brussels-Capital Region			10.9	10.9	11.2	12.9	11.7	13.4	12.8	12.7	13.7	12.4	12.9	11.6	14.7	1.6	[0.4; 2.7]
Flemish Region	9.4	10.8	11.2	12.5	13.1	12.1	14.9	14.9	14.6	14.4	17.3	20.0	20.9	20.3	20.8	5.7	[4.8; 6.6]
Walloon Region			13.2	13.7	11.8	12.5	15.1	14.6	19.7	18.0	17.4	17.8	21.0	18.7	21.0	4.6	[3.0; 6.3]

WSR=Age-Standardised Rate, using the World Standard Population (N/100,000 person-years)

AAPC = Average Annual Percentage Change over the 2004-2016 period (except for the Flemish region : 2002-2016).

Figure 4: Malignant Melanoma: Age-standardised incidence rates (WSR) by incidence year, sex and region



1.5. Incidence by broad age groups

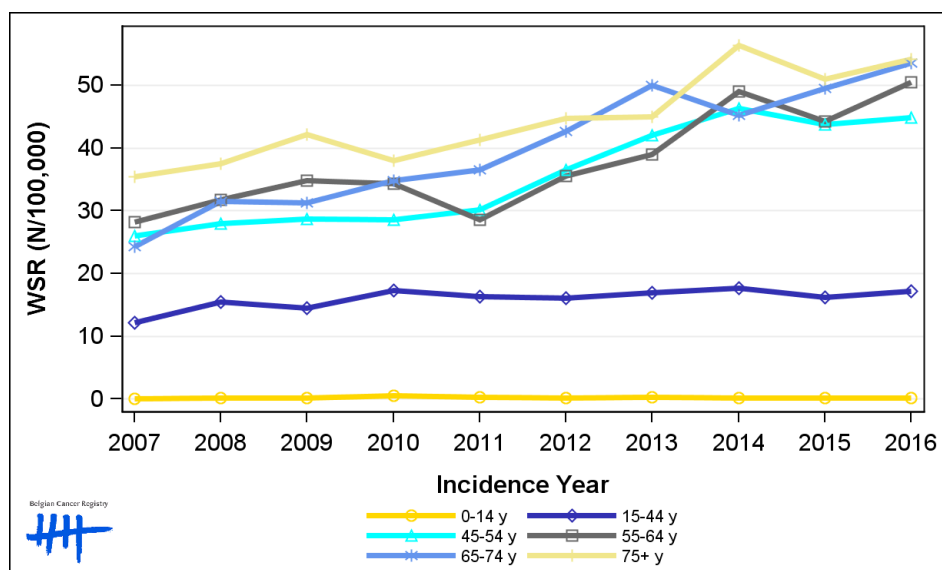
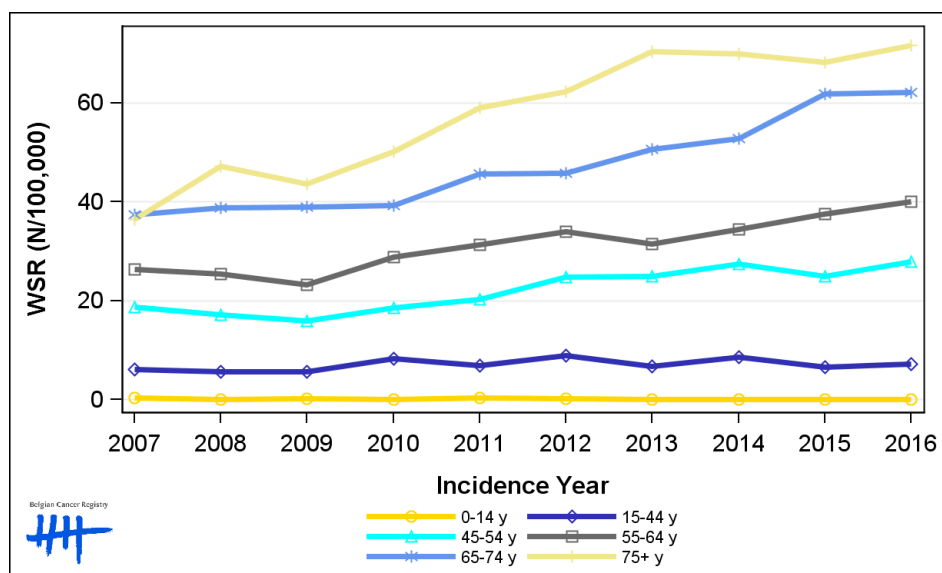
Table 5: Malignant Melanoma: Number of new diagnoses and age-standardised incidence rates (WSR) by broad age groups and incidence year by sex, Belgium

	N										WSR									
	2007	2008	2009	2010	2011	2012	2013	2014	2015	2016	2007	2008	2009	2010	2011	2012	2013	2014	2015	2016
Males																				
All ages	739	759	732	887	950	1,094	1,086	1,190	1,196	1,283	9.5	9.3	8.9	10.9	11.2	12.9	12.1	13.5	13.0	13.9
0-14 y	3	1	2	1	3	2	0	0	0	0	0.3	<0.1	0.2	<0.1	0.3	0.2	0.0	0.0	0.0	0.0
15-44 y	152	147	137	200	169	227	165	211	162	176	6.1	5.7	5.6	8.2	6.9	9.0	6.7	8.5	6.5	7.1
45-54 y	142	134	126	148	165	203	206	224	205	227	18.6	17.2	15.9	18.5	20.3	24.8	24.9	27.4	24.9	27.9
55-64 y	162	157	148	188	208	227	214	236	261	282	26.4	25.3	23.2	28.8	31.3	34.0	31.5	34.4	37.5	40.1
65-74 y	160	164	169	173	197	208	235	251	301	312	37.4	38.8	38.9	39.3	45.6	45.8	50.7	52.8	61.8	62.1
75+ y	120	156	150	177	208	227	266	268	267	286	36.5	47.3	43.7	50.1	59.1	62.2	70.4	69.9	68.2	71.6
Females																				
All ages	987	1,163	1,197	1,257	1,264	1,413	1,556	1,729	1,636	1,786	12.3	14.7	14.6	16.0	15.4	16.9	18.5	20.1	18.9	20.2
0-14 y	1	2	1	5	3	2	3	2	1	2	<0.1	0.2	0.1	0.5	0.3	0.2	0.3	0.2	0.1	0.2
15-44 y	295	374	347	404	393	390	415	434	390	419	12.2	15.5	14.5	17.3	16.4	16.1	16.9	17.7	16.2	17.2
45-54 y	198	213	223	224	240	292	338	369	352	356	26.0	27.9	28.7	28.6	30.1	36.6	42.1	46.4	43.8	44.9
55-64 y	173	202	226	228	194	245	271	343	316	365	28.1	31.8	34.8	34.3	28.5	35.5	39.0	49.0	44.3	50.5
65-74 y	121	158	154	172	180	215	261	238	267	296	24.3	31.5	31.2	34.9	36.5	42.7	50.0	45.2	49.4	53.6
75+ y	199	214	246	224	254	269	268	343	310	348	35.4	37.5	42.2	38.0	41.3	44.7	44.9	56.4	51.0	54.2

N=Number of invasive tumours

WSR=Age-Standardised Rate, using the World Standard Population (N/100,000 person-years)

Figure 5: Malignant Melanoma: Age-standardised incidence rates (WSR) versus incidence year by broad age groups for males (top) and females (bottom), Belgium



2. Relative survival

Table 6: Malignant Melanoma: 5-year relative survival proportion by sex, age group and region, Belgium 2012-2016

	5-year relative survival 2012-2016 (%)					
	Males			Females		
	N at risk	estimate	95% CI	N at risk	estimate	95% CI
Overall	5,728	91.2	[89.7, 92.7]	7,989	95.0	[94.0, 96.0]
Age group						
15-34 years	335	94.5	[90.6, 97.0]	790	97.8	[96.1, 98.9]
35-64 years	2,832	92.2	[90.8, 93.6]	4,422	96.9	[96.2, 97.7]
65+ years	2,562	89.5	[86.3, 92.7]	2,777	90.6	[87.8, 93.3]
Region						
Brussels-Capital Region	456	93.9	[87.7, 99.1]	558	95.8	[91.5, 99.3]
Flemish Region	3,458	89.9	[88.0, 91.8]	4,953	94.8	[93.6, 96.1]
Walloon Region	1,814	93.1	[90.4, 95.6]	2,478	95.1	[93.2, 96.9]

Figure 6: Malignant Melanoma: relative survival proportion by sex, Belgium 2012-2016

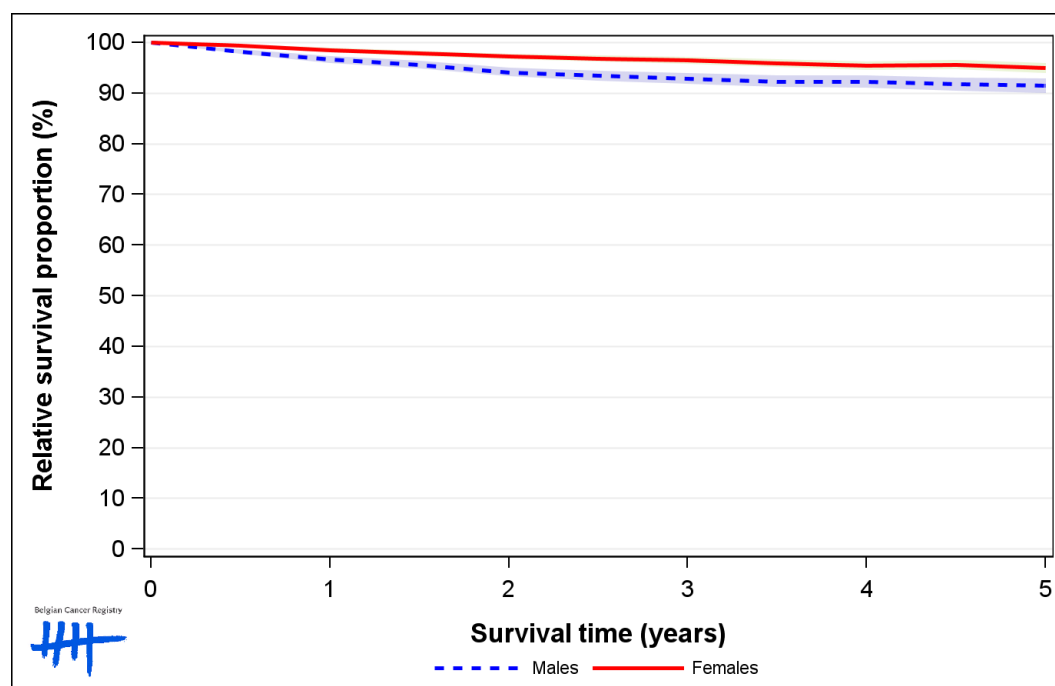


Figure 7: Malignant Melanoma: relative survival proportion by age group in males, Belgium 2012-2016

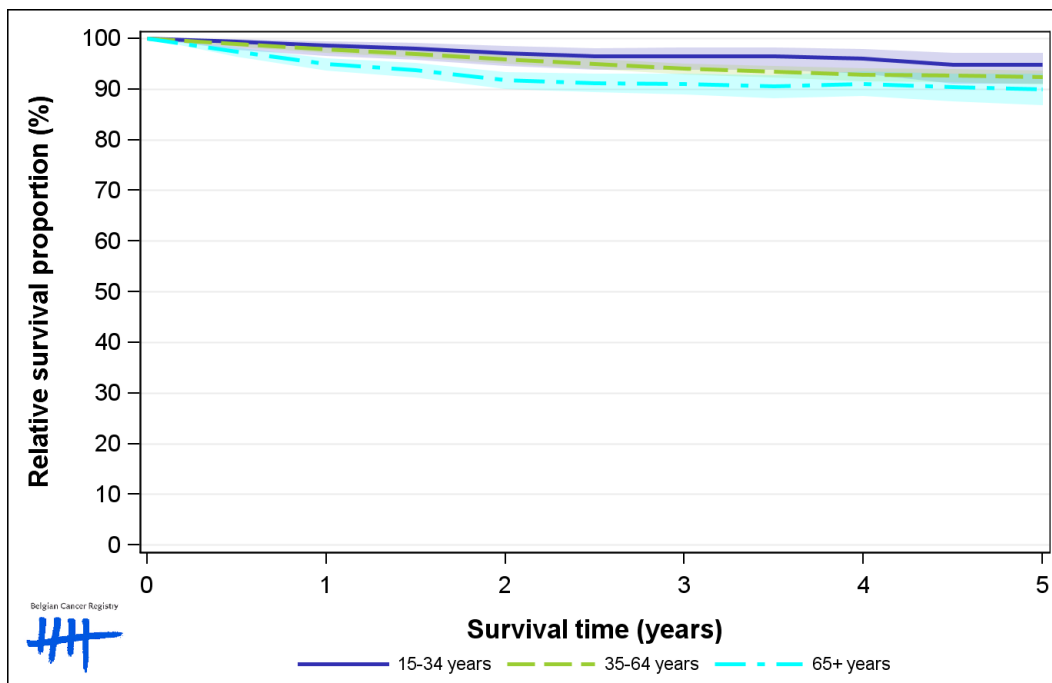


Figure 8: Malignant Melanoma: relative survival proportion by age group in females, Belgium 2012-2016

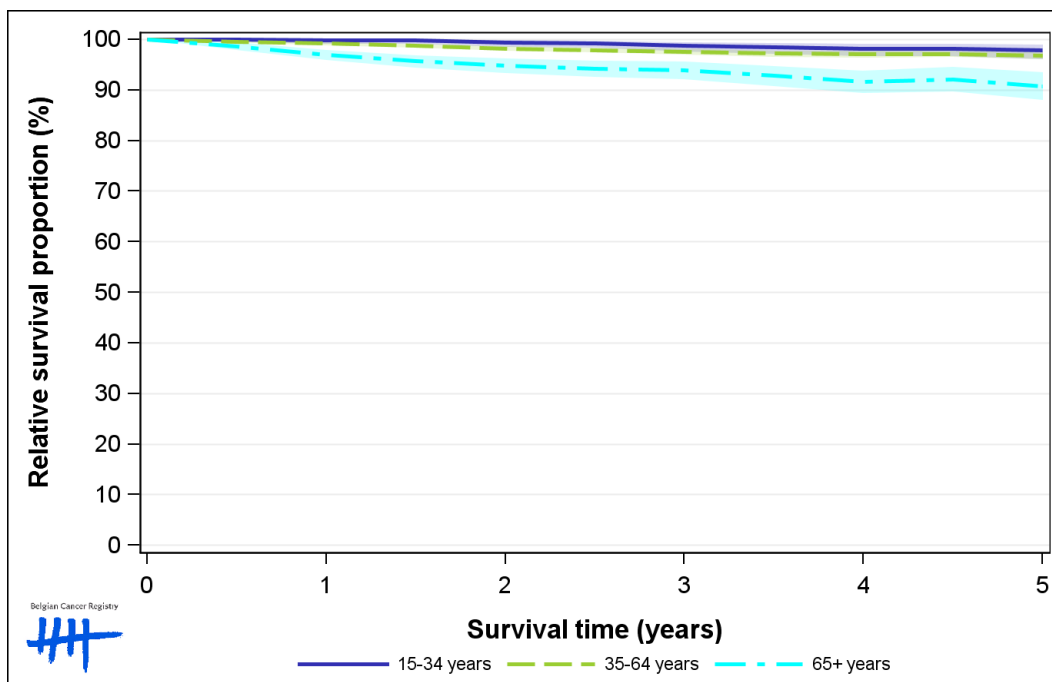


Figure 9: Malignant Melanoma: relative survival proportion by region in males, Belgium 2012-2016

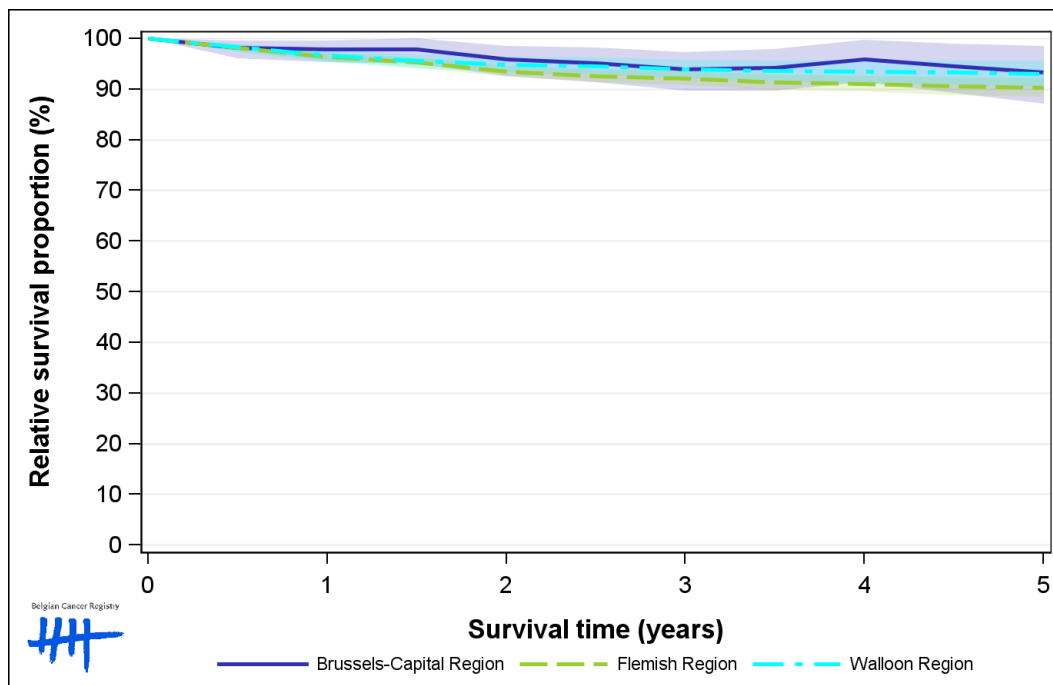


Figure 10: Malignant Melanoma: relative survival proportion by region in females, Belgium 2012-2016

