



Belgian Cancer Registry



Cancer Fact Sheet **Head & Neck Cancer**

ICD10 : C00-C14, C30-C32

Belgium 2016

1. Cancer Incidence

1.1. Number of new diagnoses and incidence rates

Table 1: Head and Neck Cancer: Average age at diagnosis, number of new cancer diagnoses (N), crude rate (CR), age-standardised incidence rates (ESR and WSR) and cumulative risk by sex and region, 2016

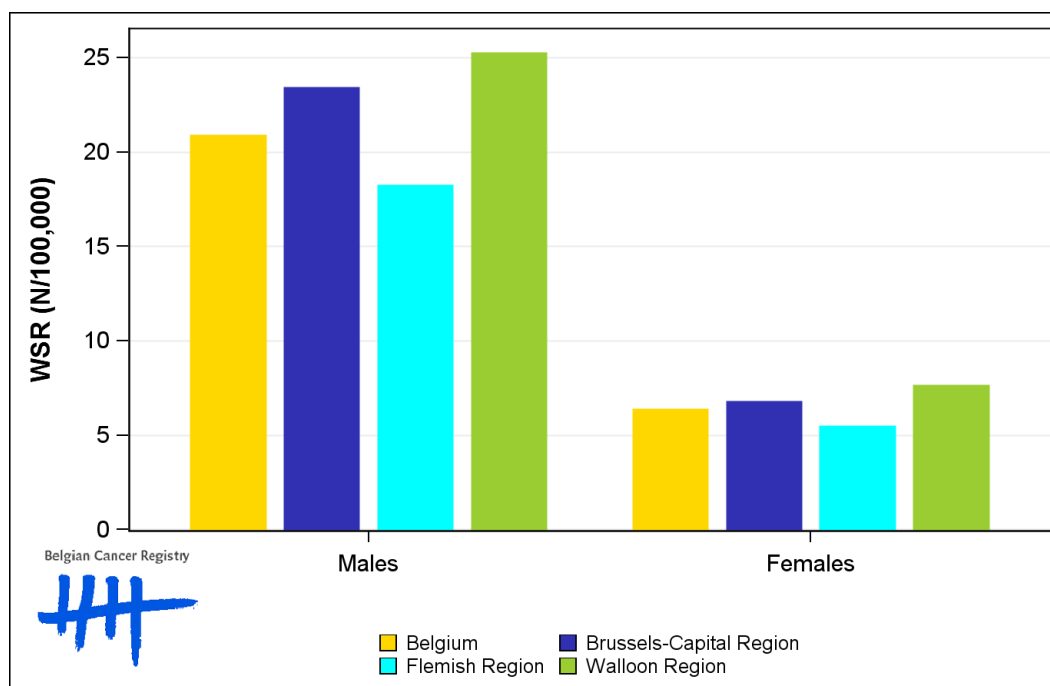
Males	Age (years)	N	CR	ESR	WSR	CRi
Belgium	63.7	2,005	36.2	29.1	20.9	2.64
Brussels-Capital Region	62.2	174	30.0	32.7	23.4	3.01
Flemish Region	64.5	1,079	33.7	25.5	18.2	2.31
Walloon Region	63.0	752	42.8	35.0	25.2	3.17

Females	Age (years)	N	CR	ESR	WSR	CRi
Belgium	65.8	689	12.0	8.8	6.4	0.79
Brussels-Capital Region	60.8	59	9.7	8.8	6.8	0.83
Flemish Region	67.1	366	11.2	7.7	5.5	0.69
Walloon Region	65.3	264	14.3	10.6	7.6	0.94

CR=Crude (all ages) Rate (N/100,000 person-years)
 ESR=Age-Standardised Rate, using the European Standard Population (N/100,000 person-years)
 WSR=Age-Standardised Rate, using the World Standard Population (N/100,000 person-years)
 CRi=Cumulative Risk for 0-74 years (%)



Figure 1: Head and Neck Cancer: Age-standardised incidence rates by sex and region, 2016



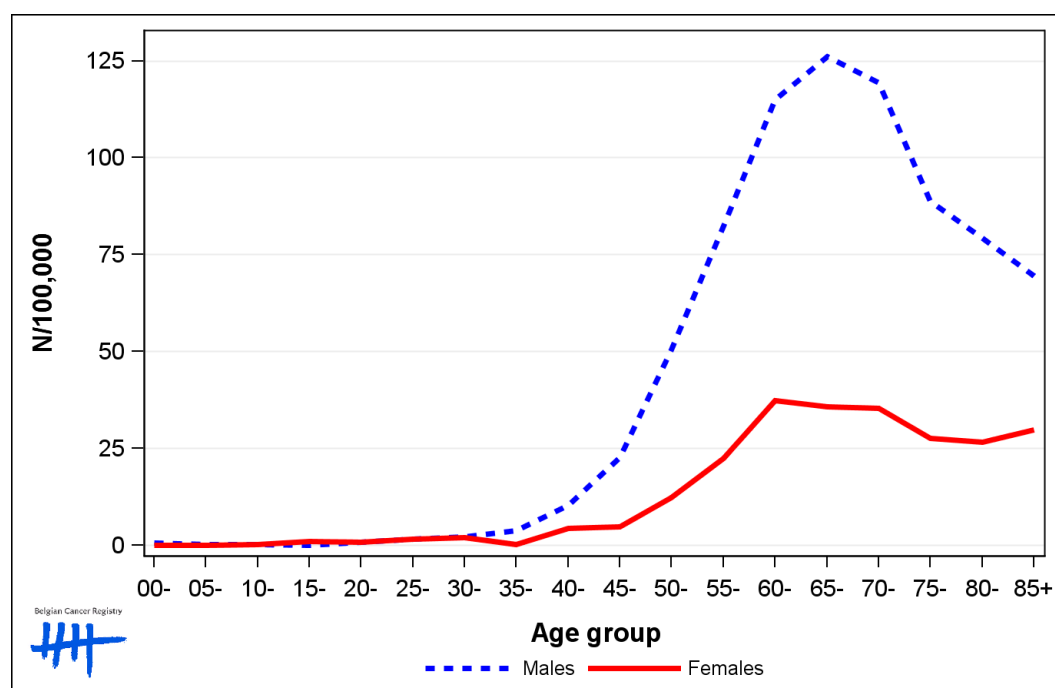
1.2. Age-specific incidence rates

Table 2: Head and Neck Cancer: Age-specific incidence rates, crude rate (CR) and age-standardised incidence rates (ESR and WSR) by sex, Belgium 2016

	00-	05-	10-	15-	20-	25-	30-	35-	40-	45-	50-	55-	60-	65-	70-	75-	80-	85+	CR	ESR	WSR
Males	0.6	0.3	0.3	0.0	0.9	1.7	2.2	3.8	10.3	22.7	50.4	82.3	115.0	126.1	119.3	88.7	79.2	69.6	36.2	29.1	20.9
Females	0.0	0.0	0.3	1.0	0.9	1.7	1.9	0.3	4.3	4.9	12.3	22.5	37.4	35.8	35.3	27.7	26.6	29.8	12.0	8.8	6.4

CR=Crude (all ages) Rate (N/100,000 person-years)
 ESR=Age-Standardised Rate, using the European Standard Population (N/100,000 person-years)
 WSR=Age-Standardised Rate, using the World Standard Population (N/100,000 person-years)

Figure 2: Head and Neck Cancer: Age-specific incidence rates by sex, 2016



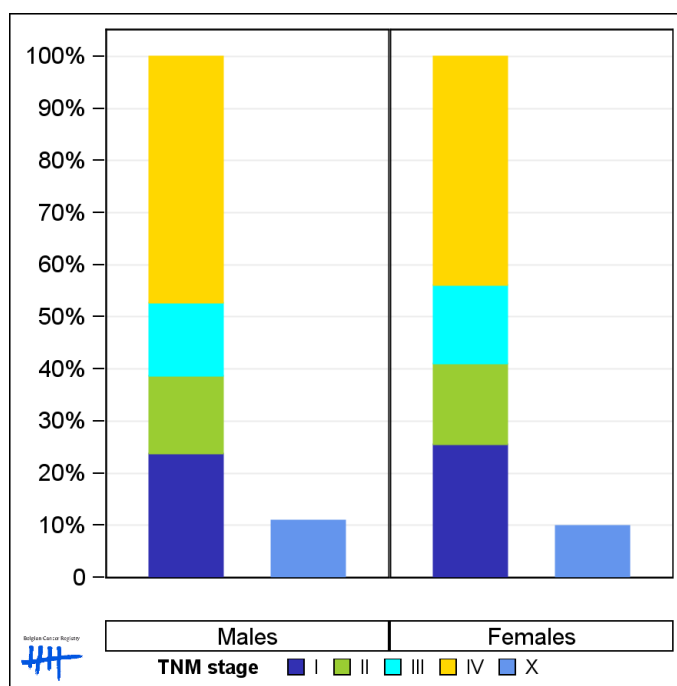
1.3. Combined stage

Table 3: Head and Neck Cancer: Distribution of combined stage by sex, Belgium 2016

	Stage I	Stage II	Stage III	Stage IV	Stage X	Stage NA	Total
Males							
N	414	257	246	820	212	56	2,005
%	20.6	12.8	12.3	40.9	10.6	2.8	100
Females							
N	154	93	91	264	66	21	689
%	22.4	13.5	13.2	38.3	9.6	3.0	100

Staging according to the TNM 7th edition (Ref:Sobin LH, Gospodarowicz MK, Wittekind Ch. TNM classification of malignant tumours, UICC 7th edition)
 Combined TNM stage : compilation of pathological (pTNM) and clinical (cTNM) stage.
 pTNM prevails over cTNM, except when cTNM stage is IV
 Stage X: diagnoses with an unknown stage
 Stage NA: diagnoses with a histological diagnosis where no stage can be evaluated (Not Applicable)

Figure 3: Head and Neck Cancer: Bar chart of known combined stage by sex, Belgium 2016



1.4. Trends in incidence

Table 4: Head and Neck Cancer: Age-standardised incidence rates (WSR) and average annual percentage change (AAPC) by incidence year, sex and region

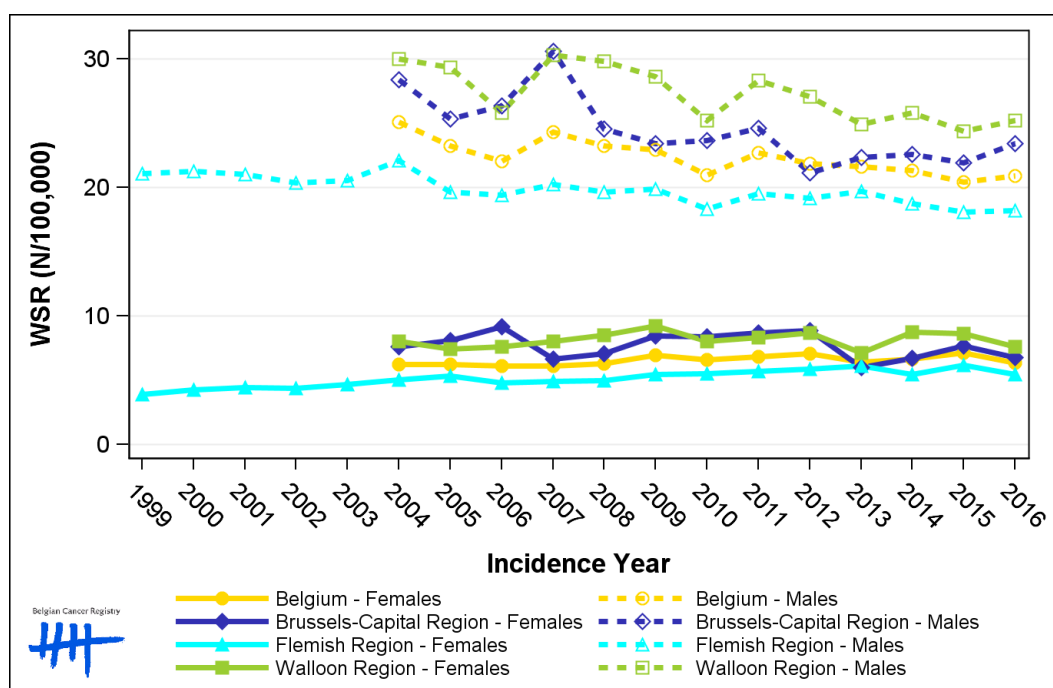
Males	2002	2003	2004	2005	2006	2007	2008	2009	2010	2011	2012	2013	2014	2015	2016	AAPC	95% CI
Belgium			25.1	23.2	22.0	24.3	23.2	23.0	20.9	22.7	21.8	21.6	21.3	20.4	20.9	-1.3	[-1.9; -0.7]
Brussels-Capital Region			28.4	25.3	26.4	30.6	24.6	23.4	23.7	24.6	21.2	22.3	22.6	21.9	23.4	-2.0	[-3.1; -0.9]
Flemish Region	20.4	20.5	22.1	19.7	19.4	20.2	19.7	19.9	18.4	19.5	19.2	19.7	18.8	18.1	18.2	-0.9	[-1.3; -0.5]
Walloon Region			30.0	29.4	25.8	30.3	29.8	28.6	25.2	28.3	27.1	24.9	25.8	24.4	25.2	-1.5	[-2.4; -0.6]

Females	2002	2003	2004	2005	2006	2007	2008	2009	2010	2011	2012	2013	2014	2015	2016	AAPC	95% CI
Belgium			6.3	6.2	6.1	6.1	6.3	7.0	6.6	6.8	7.1	6.4	6.7	7.1	6.4	0.8	[0.1; 1.6]
Brussels-Capital Region			7.6	8.1	9.2	6.7	7.1	8.5	8.4	8.7	8.8	6.0	6.8	7.7	6.8	-1.1	[-3.1; 1.0]
Flemish Region	4.4	4.7	5.1	5.3	4.8	5.0	5.0	5.5	5.5	5.7	5.9	6.1	5.5	6.2	5.5	1.9	[1.1; 2.6]
Walloon Region			8.0	7.4	7.6	8.1	8.5	9.2	8.0	8.4	8.7	7.1	8.8	8.6	7.6	0.3	[-0.9; 1.6]

WSR=Age-Standardised Rate, using the World Standard Population (N/100,000 person-years)

AAPC = Average Annual Percentage Change over the 2004-2016 period (except for the Flemish region : 2002-2016).

Figure 4: Head and Neck Cancer: Age-standardised incidence rates (WSR) by incidence year, sex and region



1.5. Incidence by broad age groups

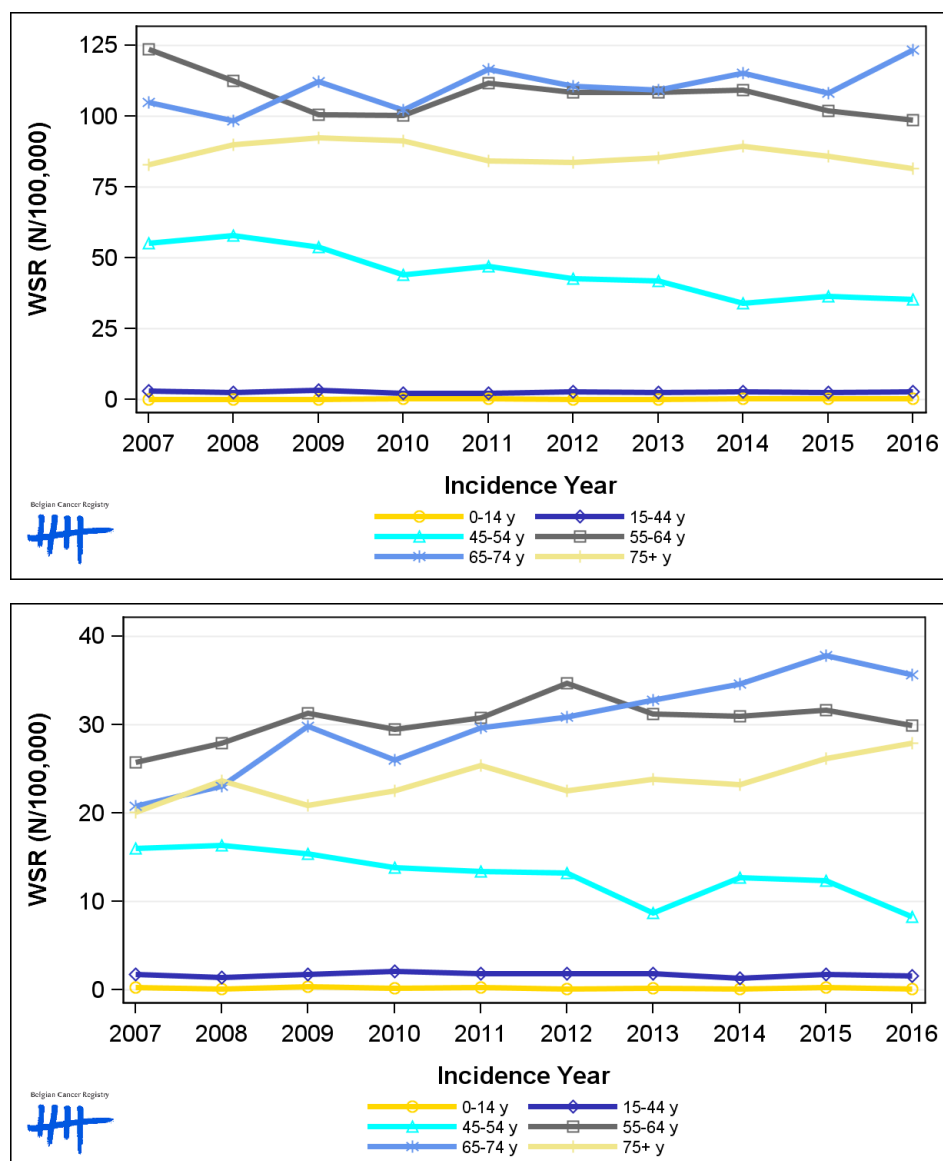
Table 5: Head and Neck Cancer: Number of new diagnoses and age-standardised incidence rates (WSR) by broad age groups and incidence year by sex, Belgium

	N										WSR									
	2007	2008	2009	2010	2011	2012	2013	2014	2015	2016	2007	2008	2009	2010	2011	2012	2013	2014	2015	2016
Males																				
All ages	1,981	1,947	1,963	1,837	2,013	1,949	1,982	1,995	1,942	2,005	24.3	23.2	23.0	20.9	22.7	21.8	21.6	21.3	20.4	20.9
0-14 y	2	1	2	4	3	2	2	3	4	4	0.2	<0.1	0.2	0.5	0.3	0.2	0.2	0.3	0.4	0.4
15-44 y	89	71	91	60	62	72	67	72	62	70	3.2	2.6	3.5	2.3	2.3	2.9	2.5	2.8	2.4	2.7
45-54 y	428	455	432	357	388	354	355	287	307	299	55.1	57.8	53.7	43.9	46.9	42.6	41.9	34.0	36.4	35.3
55-64 y	744	698	643	655	746	729	734	748	708	694	123.7	112.5	100.6	100.4	111.8	108.4	108.4	109.3	102.0	98.7
65-74 y	445	419	471	433	504	494	504	545	525	618	104.9	98.4	112.2	102.1	116.5	110.5	109.3	115.4	108.0	123.4
75+ y	273	303	324	328	310	298	320	340	336	320	82.8	90.0	92.3	91.2	84.3	83.6	85.2	89.3	85.8	81.6
Females																				
All ages	546	587	634	616	663	692	652	677	734	689	6.1	6.3	7.0	6.6	6.8	7.1	6.4	6.7	7.1	6.4
0-14 y	3	1	3	2	3	1	2	1	2	1	0.3	0.1	0.3	0.2	0.3	0.1	0.2	0.1	0.2	<0.1
15-44 y	44	35	40	47	46	49	46	33	43	36	1.8	1.4	1.7	2.1	1.9	1.9	1.9	1.3	1.7	1.6
45-54 y	123	128	122	113	108	110	72	105	100	69	16.0	16.4	15.4	13.9	13.4	13.2	8.7	12.7	12.3	8.3
55-64 y	159	178	205	196	210	238	217	217	224	214	25.7	27.9	31.3	29.5	30.8	34.7	31.2	30.9	31.6	30.0
65-74 y	103	111	142	124	145	156	168	181	202	196	20.8	23.0	29.8	26.0	29.7	30.8	32.8	34.6	37.8	35.6
75+ y	114	134	122	134	151	138	147	140	163	173	20.1	23.7	20.9	22.6	25.4	22.5	23.8	23.2	26.2	28.0

N=Number of invasive tumours

WSR=Age-Standardised Rate, using the World Standard Population (N/100,000 person-years)

Figure 5: Head and Neck Cancer: Age-standardised incidence rates (WSR) versus incidence year by broad age groups for males (top) and females (bottom), Belgium



2. Relative survival

Table 6: Head and Neck Cancer: 5-year relative survival proportion by sex, age group and region, Belgium 2012-2016

	5-year relative survival 2012-2016 (%)					
	Males			Females		
	N at risk	estimate	95% CI	N at risk	estimate	95% CI
Overall	9,588	51.2	[49.9, 52.6]	3,359	59.4	[57.2, 61.6]
Age group						
15-49 years	813	60.5	[56.5, 64.4]	348	74.5	[68.7, 79.4]
50-74 years	7,182	50.5	[49.0, 52.0]	2,258	58.2	[55.7, 60.7]
75+ years	1,597	50.5	[46.1, 55.0]	754	56.5	[50.1, 63.0]
Region						
Brussels-Capital Region	790	49.0	[44.0, 54.0]	299	58.5	[51.3, 65.4]
Flemish Region	5,284	54.3	[52.5, 56.1]	1,774	61.2	[58.2, 64.3]
Walloon Region	3,515	47.2	[45.0, 49.4]	1,286	57.0	[53.5, 60.4]

Figure 6: Head and Neck Cancer: relative survival proportion by sex, Belgium 2012-2016

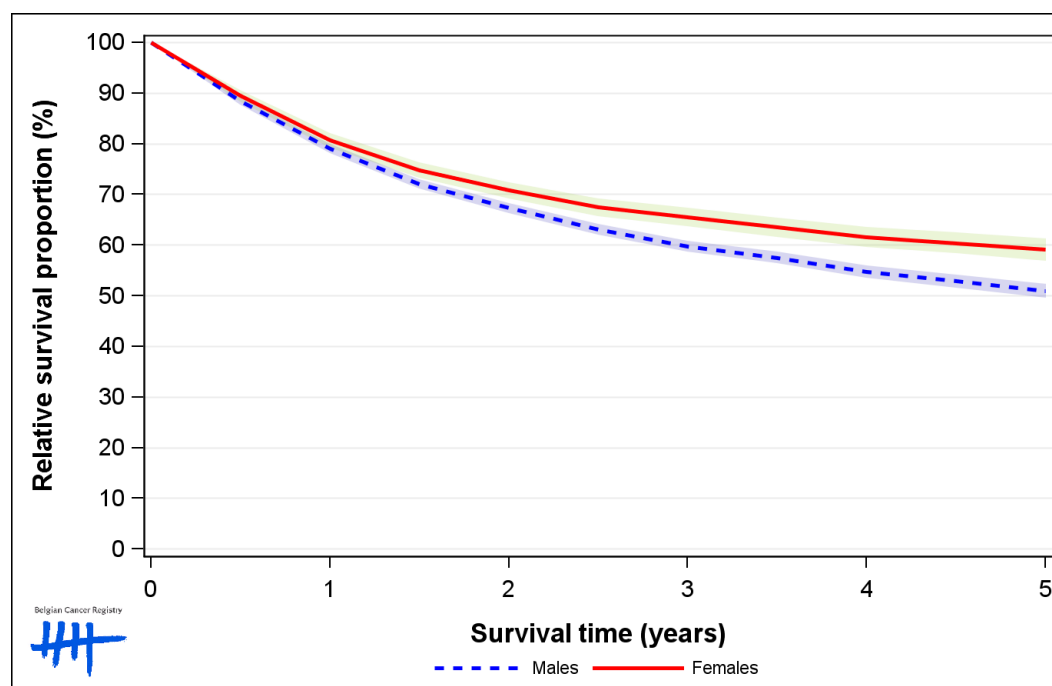


Figure 7: Head and Neck Cancer: relative survival proportion by age group in males, Belgium 2012-2016

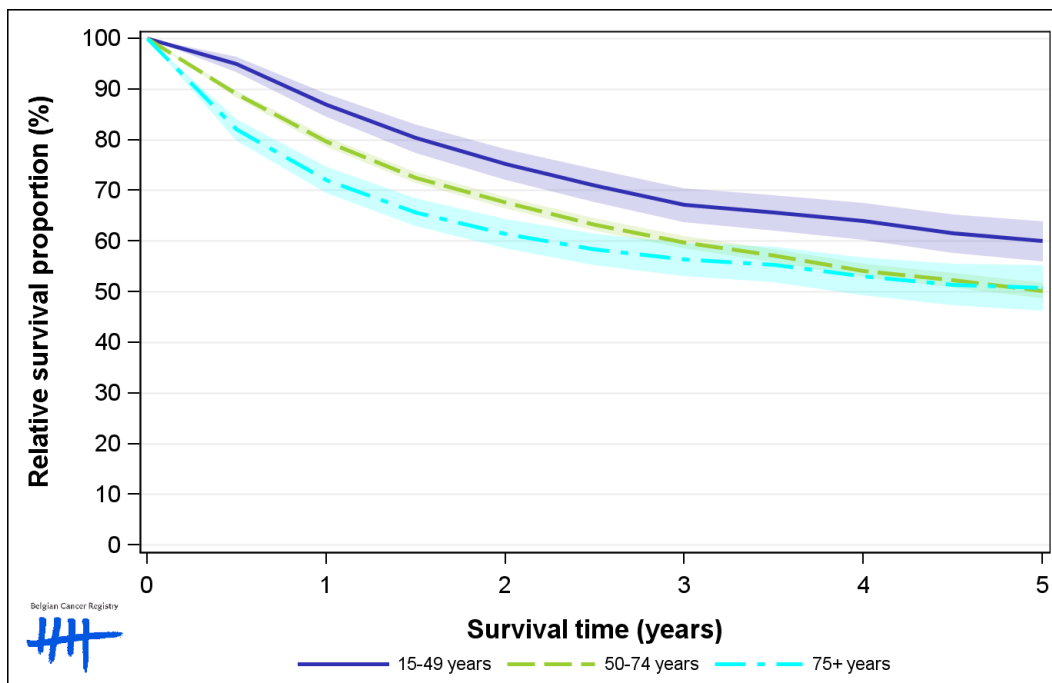


Figure 8: Head and Neck Cancer: relative survival proportion by age group in females, Belgium 2012-2016

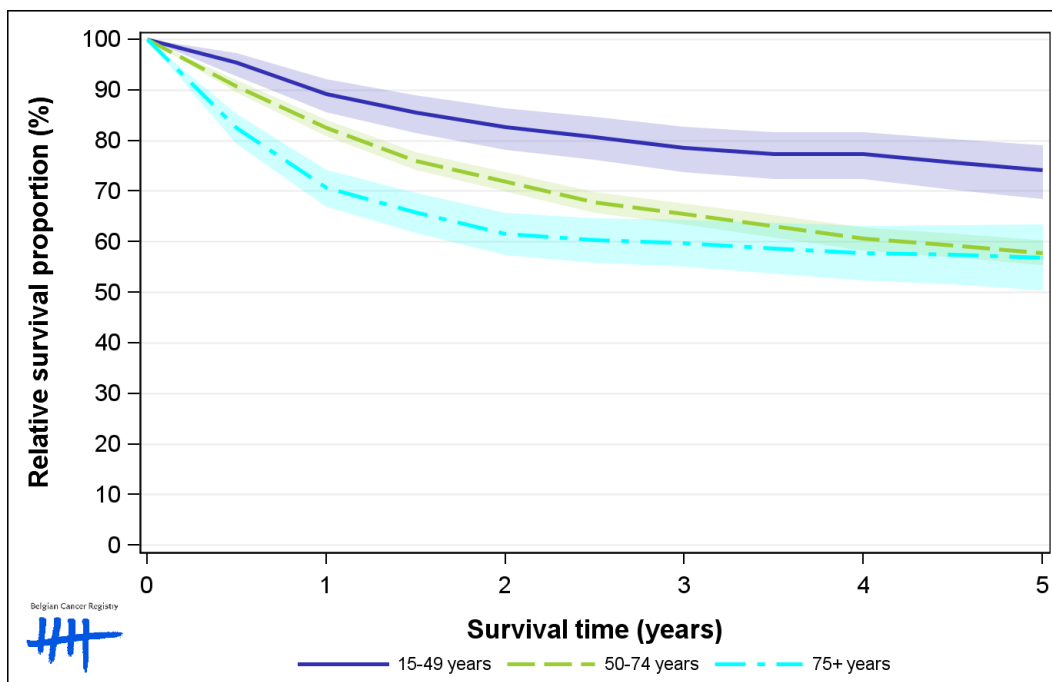


Figure 9: Head and Neck Cancer: relative survival proportion by region in males, Belgium 2012-2016

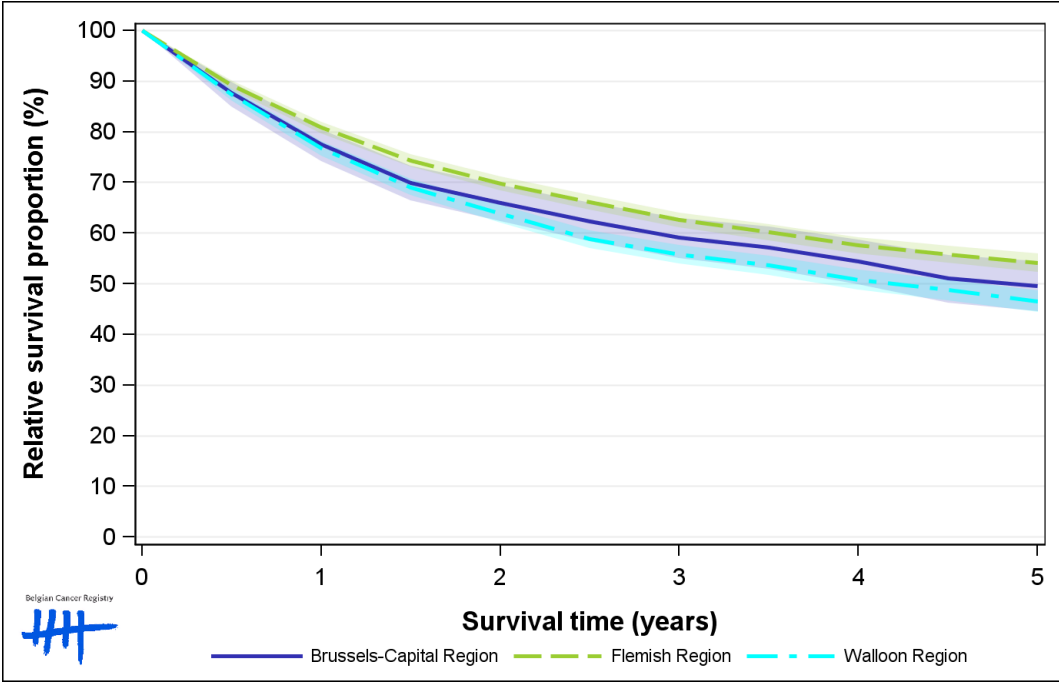


Figure 10: Head and Neck Cancer: relative survival proportion by region in females, Belgium 2012-2016

