

Belgian Cancer Registry



Cancer Fact Sheet **Corpus Uteri Cancer**

ICD10 : C54

Belgium 2016

1. Cancer Incidence

1.1. Number of new diagnoses and incidence rates

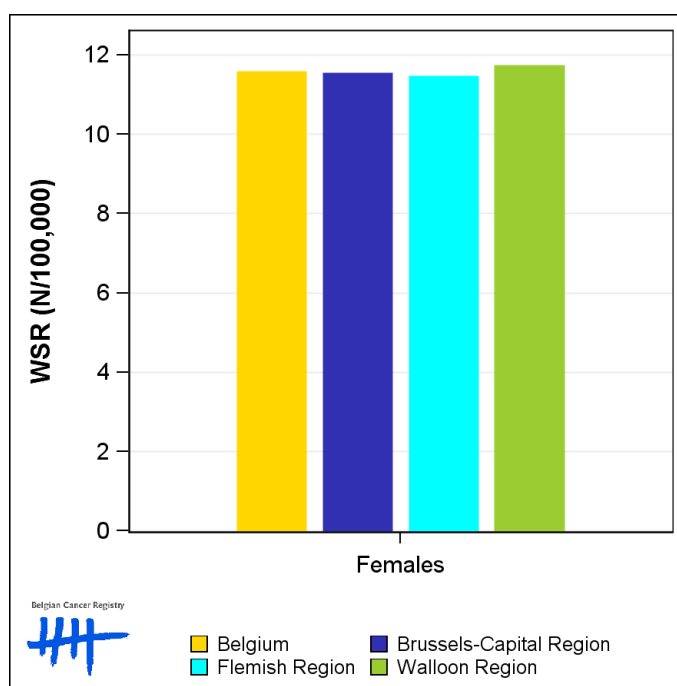
Table 1: Corpus Uteri Cancer: Average age at diagnosis, number of new cancer diagnoses (N), crude rate (CR), age-standardised incidence rates (ESR and WSR) and cumulative risk by region, 2016

Females	Age (years)	N	CR	ESR	WSR	CRi
Belgium	69.4	1,438	25.1	16.8	11.6	1.51
Brussels-Capital Region	67.9	114	18.7	16.4	11.5	1.45
Flemish Region	70.2	871	26.6	16.7	11.5	1.51
Walloon Region	68.4	453	24.5	17.0	11.7	1.52

CR=Crude (all ages) Rate (N/100,000 person-years)
ESR=Age-Standardised Rate, using the European Standard Population (N/100,000 person-years)
WSR=Age-Standardised Rate, using the World Standard Population (N/100,000 person-years)
CRi=Cumulative Risk for 0-74 years (%)



Figure 1: Corpus Uteri Cancer: Age-standardised incidence rates by region, 2016



Belgian Cancer Registry



Belgium Brussels-Capital Region
Flemish Region Walloon Region

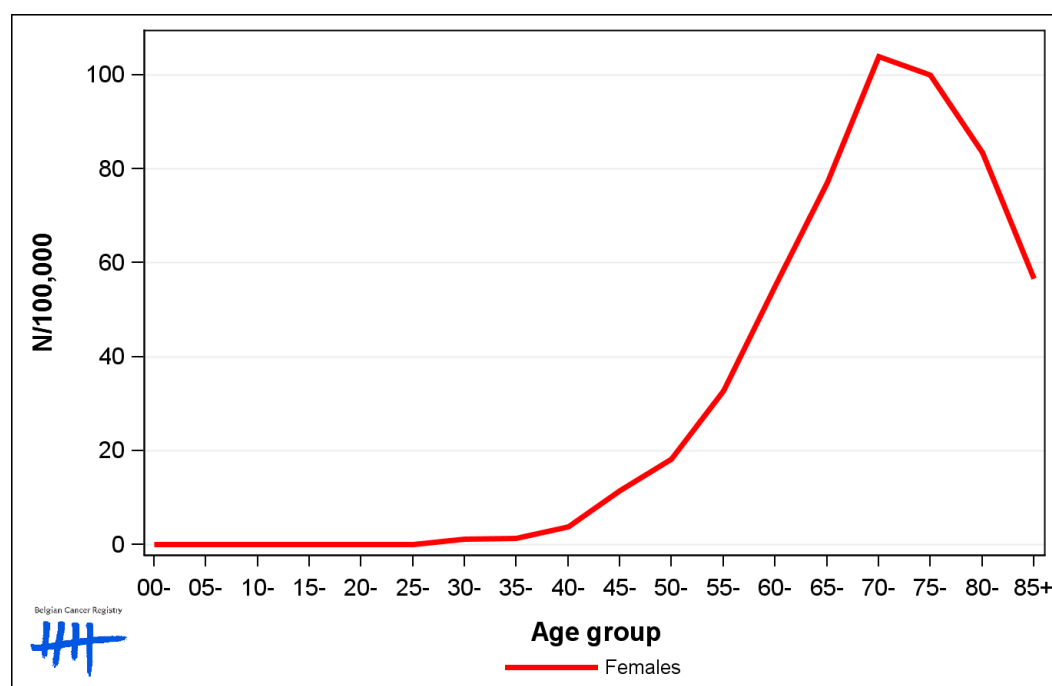
1.2. Age-specific incidence rates

Table 2: Corpus Uteri Cancer: Age-specific incidence rates, crude rate (CR) and age-standardised incidence rates (ESR and WSR), Belgium 2016

	00-	05-	10-	15-	20-	25-	30-	35-	40-	45-	50-	55-	60-	65-	70-	75-	80-	85+	CR	ESR	WSR
Females	0.0	0.0	0.0	0.0	0.0	1.1	1.4	3.8	11.6	18.2	32.7	55.0	77.1	103.9	99.9	83.5	56.7	25.1	16.8	11.6	

CR=Crude (all ages) Rate (N/100,000 person-years)
 ESR=Age-Standardised Rate, using the European Standard Population (N/100,000 person-years)
 WSR=Age-Standardised Rate, using the World Standard Population (N/100,000 person-years)

Figure 2: Corpus Uteri Cancer: Age-specific incidence rates, 2016



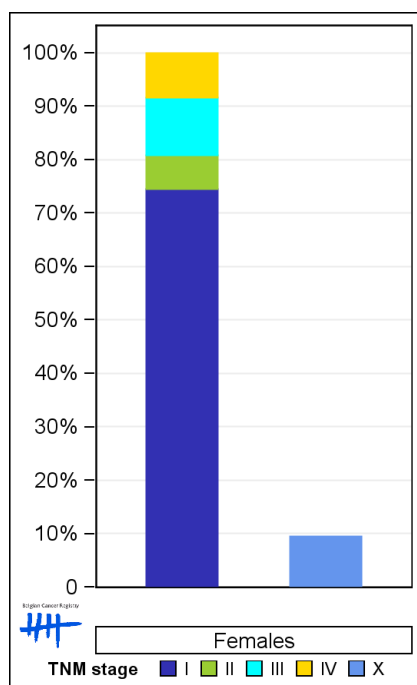
1.3. Combined stage

Table 3: Corpus Uteri Cancer: Distribution of combined stage, Belgium 2016

	Stage I	Stage II	Stage III	Stage IV	Stage X	Stage NA	Total
Females							
N	915	77	133	102	129	82	1,438
%	63.6	5.4	9.2	7.1	9.0	5.7	100

Staging according to the TNM 7th edition (Ref.Sobin LH, Gospodarowicz MK, Wittekind Ch. TNM classification of malignant tumours, UICC 7th edition)
 Combined TNM stage : compilation of pathological (pTNM) and clinical (cTNM) stage.
 pTNM prevails over cTNM, except when cTNM stage is IV
 Stage X: diagnoses with an unknown stage
 Stage NA: diagnoses with a histological diagnosis where no stage can be evaluated (Not Applicable)

Figure 3: Corpus Uteri Cancer: Bar chart of known combined stage, Belgium 2016



1.4. Trends in incidence

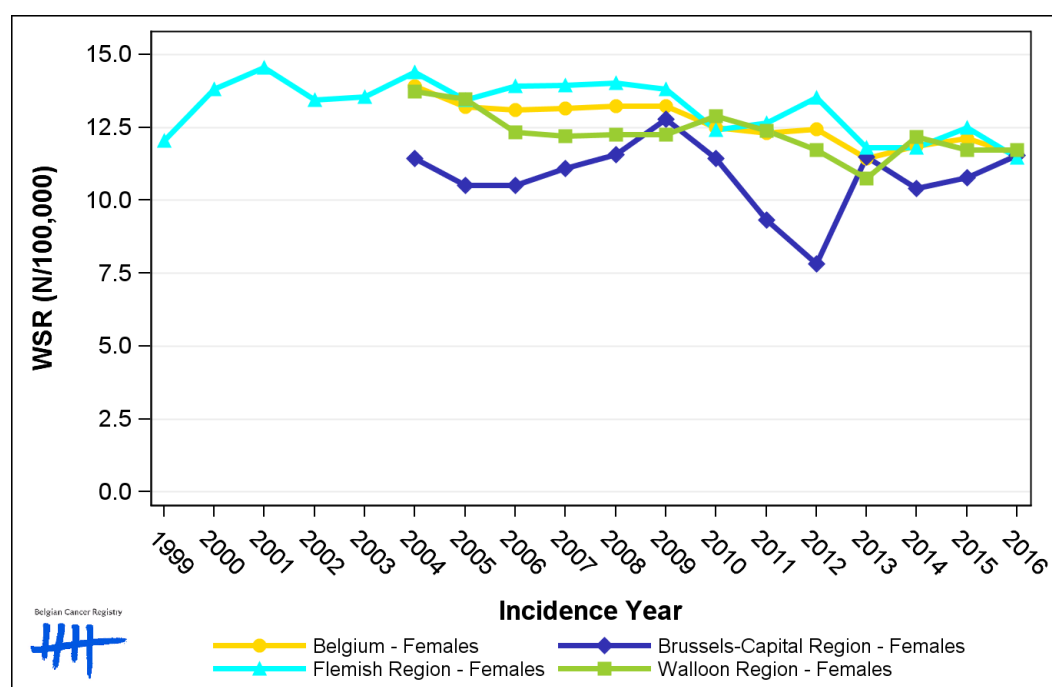
Table 4: Corpus Uteri Cancer: Age-standardised incidence rates (WSR) and average annual percentage change (AAPC) by incidence year and region

Females	2002	2003	2004	2005	2006	2007	2008	2009	2010	2011	2012	2013	2014	2015	2016	AAPC	95% CI
Belgium			13.9	13.2	13.1	13.2	13.2	13.2	12.5	12.3	12.4	11.4	11.9	12.1	11.6	-1.4	[-1.8; -1.0]
Brussels-Capital Region			11.4	10.5	10.5	11.1	11.6	12.8	11.4	9.3	7.8	11.5	10.4	10.8	11.5	-0.5	[-2.5; 1.6]
Flemish Region	13.5	13.5	14.4	13.5	13.9	14.0	14.0	13.8	12.4	12.6	13.5	11.8	11.8	12.5	11.5	-1.2	[-1.7; -0.7]
Walloon Region			13.7	13.5	12.3	12.2	12.2	12.3	12.9	12.4	11.7	10.8	12.2	11.7	11.7	-1.2	[-1.9; -0.5]

WSR=Age-Standardised Rate, using the World Standard Population (N/100,000 person-years)

AAPC = Average Annual Percentage Change over the 2004-2016 period (except for the Flemish region : 2002-2016).

Figure 4: Corpus Uteri Cancer: Age-standardised incidence rates (WSR) by incidence year and region



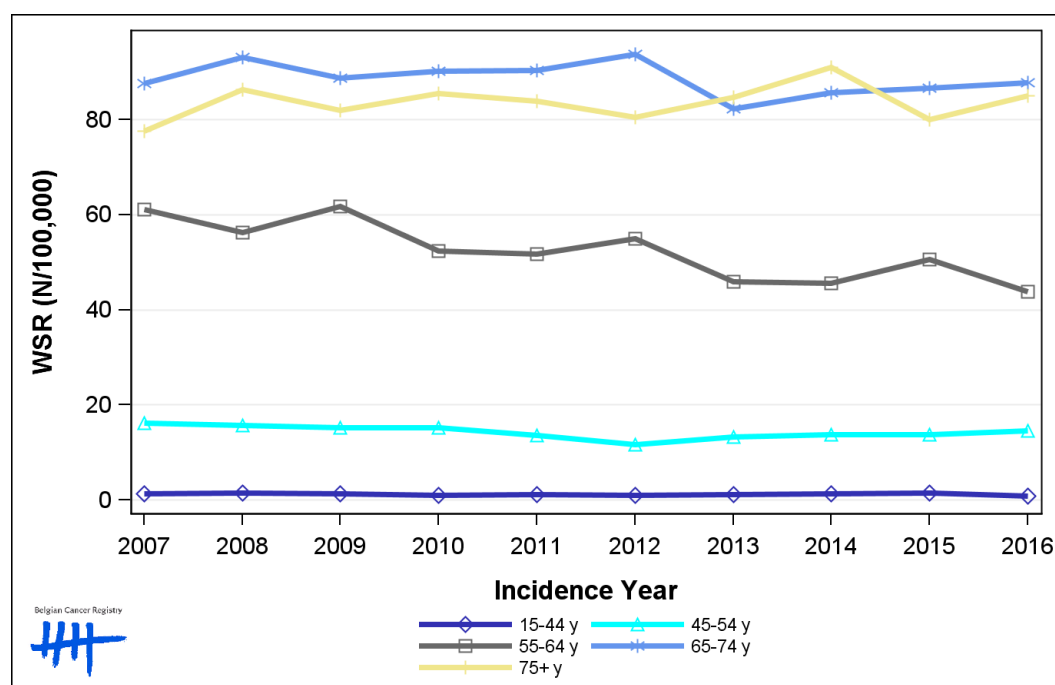
1.5. Incidence by broad age groups

Table 5: Corpus Uteri Cancer: Number of new diagnoses and age-standardised incidence rates (WSR) by broad age groups and incidence year, Belgium

	N										WSR									
	2007	2008	2009	2010	2011	2012	2013	2014	2015	2016	2007	2008	2009	2010	2011	2012	2013	2014	2015	2016
Females																				
All ages	1,394	1,463	1,461	1,417	1,428	1,448	1,384	1,461	1,457	1,438	13.2	13.2	13.2	12.5	12.3	12.4	11.4	11.9	12.1	11.6
0-14 y	0	0	0	0	0	0	0	0	0	0	0.0	0.0	0.0	0.0	0.0	0.0	0.0	0.0	0.0	0.0
15-44 y	35	39	35	26	28	27	28	35	39	23	1.3	1.5	1.3	1.0	1.1	1.1	1.1	1.4	1.5	0.9
45-54 y	125	123	121	122	111	96	111	115	115	119	16.2	15.7	15.2	15.2	13.6	11.6	13.3	13.8	13.7	14.6
55-64 y	367	356	399	346	351	376	315	316	357	313	61.1	56.2	61.7	52.4	51.7	55.0	45.8	45.7	50.6	43.8
65-74 y	446	461	437	438	454	476	426	453	466	487	87.6	93.0	88.7	90.1	90.3	93.7	82.3	85.7	86.6	87.8
75+ y	421	484	469	485	484	473	504	542	480	496	77.6	86.3	82.0	85.4	83.9	80.6	84.7	91.1	80.0	85.0

N=Number of invasive tumours
WSR=Age-Standardised Rate, using the World Standard Population (N/100,000 person-years)

Figure 5: Corpus Uteri Cancer: Age-standardised incidence rates (WSR) versus incidence year by broad age groups, Belgium



2. Relative survival

Table 6: Corpus Uteri Cancer: 5-year relative survival proportion by age group and region, Belgium 2012-2016

5-year relative survival 2012-2016 (%)			
Females			
	N at risk	estimate	95% CI
Overall	7,138	80.2	[78.7, 81.7]
Age group			
15-54 years	699	89.0	[86.0, 91.5]
55-69 years	2,862	84.4	[82.6, 86.2]
70+ years	3,577	74.7	[72.1, 77.3]
Region			
Brussels-Capital Region	524	80.4	[74.7, 85.6]
Flemish Region	4,375	80.9	[79.1, 82.7]
Walloon Region	2,239	78.8	[76.0, 81.5]

Figure 6: Corpus Uteri Cancer: relative survival proportion, Belgium 2012-2016

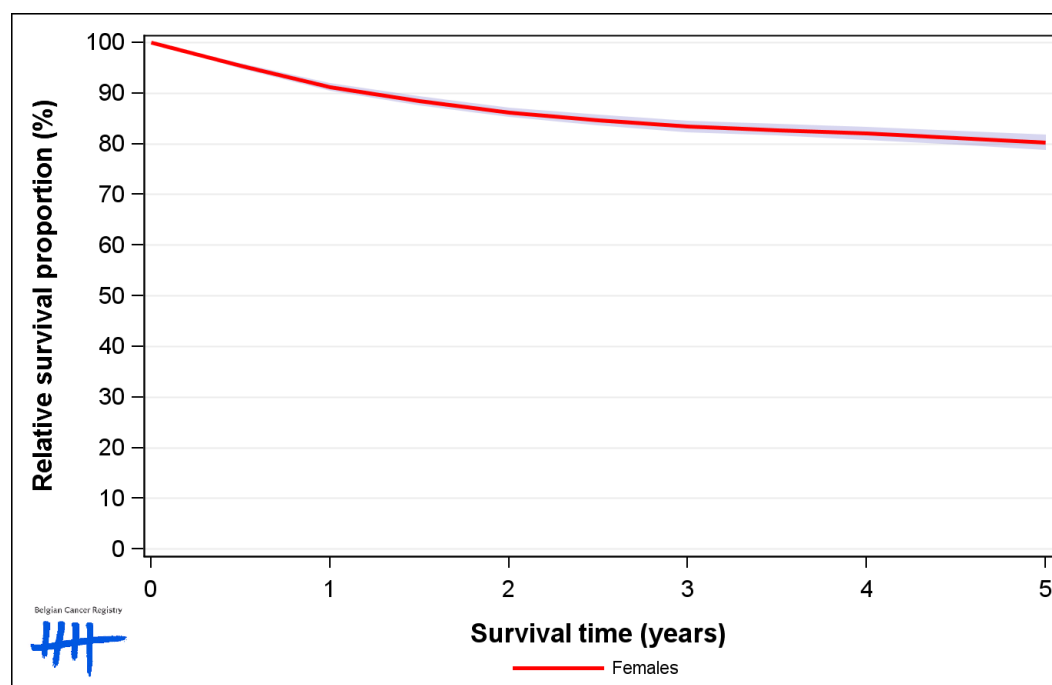


Figure 7: Corpus Uteri Cancer: relative survival proportion by age group, Belgium 2012-2016

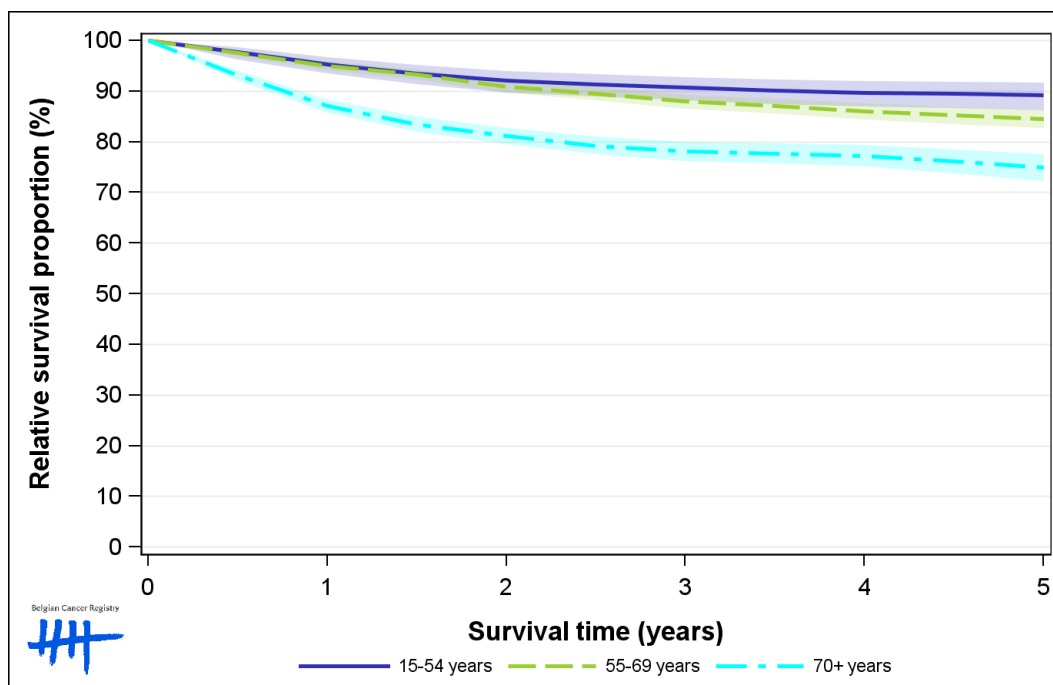


Figure 8: Corpus Uteri Cancer: relative survival proportion by region, Belgium 2012-2016

