



Belgian Cancer Registry



Cancer Fact Sheet **Cervical Cancer**

ICD10 : C53



Belgium 2016

1. Cancer Incidence

1.1. Number of new diagnoses and incidence rates

Table 1: Cervical Cancer: Average age at diagnosis, number of new cancer diagnoses (N), crude rate (CR), age-standardised incidence rates (ESR and WSR) and cumulative risk by region, 2016

Females	Age (years)	N	CR	ESR	WSR	CRi
Belgium	54.4	640	11.2	9.9	7.9	0.79
Brussels-Capital Region	53.5	68	11.2	10.8	8.4	0.87
Flemish Region	54.6	347	10.6	9.3	7.3	0.72
Walloon Region	54.2	225	12.2	11.0	8.8	0.91

CR=Crude (all ages) Rate (N/100,000 person-years)

ESR=Age-Standardised Rate, using the European Standard Population (N/100,000 person-years)

WSR=Age-Standardised Rate, using the World Standard Population (N/100,000 person-years)

CRi=Cumulative Risk for 0-74 years (%)

Belgian Cancer Registry


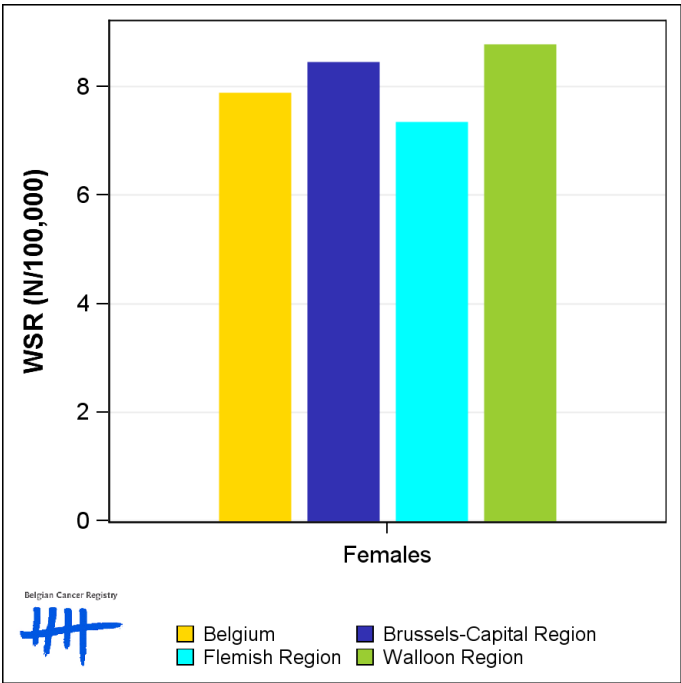


Figure 1: Cervical Cancer: Age-standardised incidence rates by region, 2016



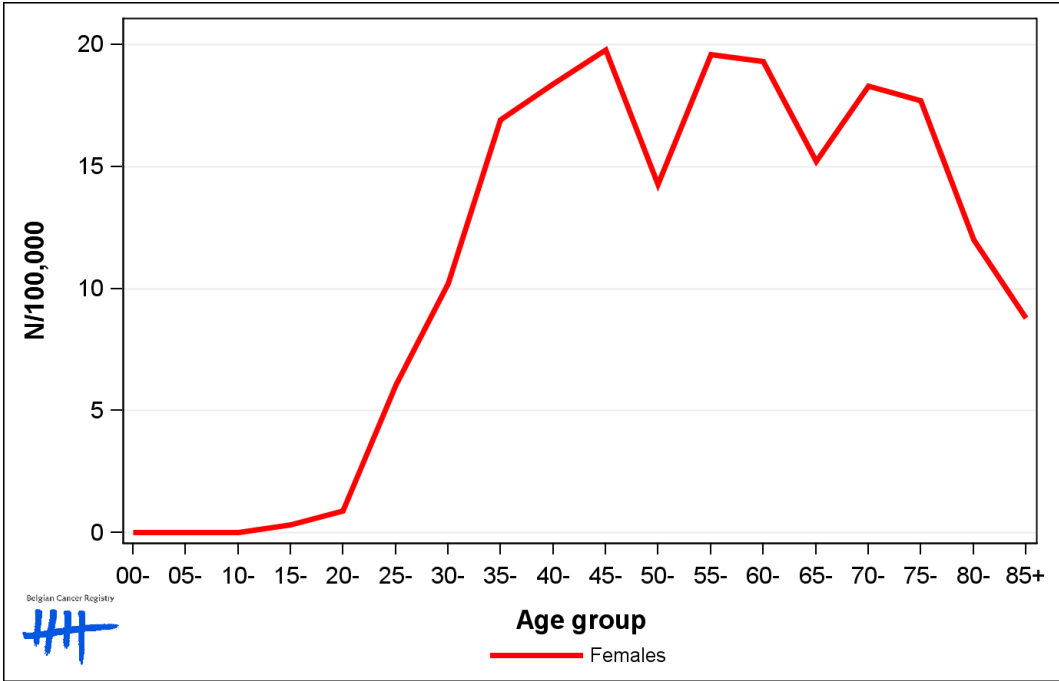
1.2. Age-specific incidence rates

Table 2: Cervical Cancer: Age-specific incidence rates, crude rate (CR) and age-standardised incidence rates (ESR and WSR), Belgium 2016

	00-	05-	10-	15-	20-	25-	30-	35-	40-	45-	50-	55-	60-	65-	70-	75-	80-	85+	CR	ESR	WSR
Females	0.0	0.0	0.0	0.3	0.9	6.1	10.2	16.9	18.4	19.8	14.3	19.6	19.3	15.2	18.3	17.7	12.0	8.8	11.2	9.9	7.9

CR=Crude (all ages) Rate (N/100,000 person-years)
ESR=Age-Standardised Rate, using the European Standard Population (N/100,000 person-years)
WSR=Age-Standardised Rate, using the World Standard Population (N/100,000 person-years)

Figure 2: Cervical Cancer: Age-specific incidence rates, 2016



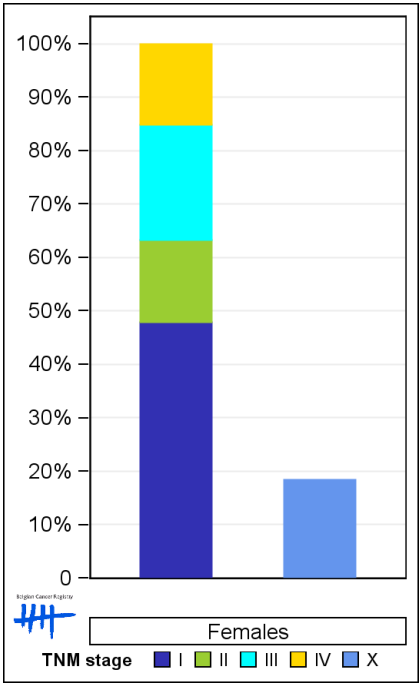
1.3. Combined stage

Table 3: Cervical Cancer: Distribution of combined stage, Belgium 2016

	Stage I	Stage II	Stage III	Stage IV	Stage X	Stage NA	Total
Females							
N	248	80	112	78	117	5	640
%	38.8	12.5	17.5	12.2	18.3	0.8	100

Staging according to the TNM 7th edition (Ref:Sobin LH, Gospodarowicz MK, Wittekind Ch. TNM classification of malignant tumours, UICC 7th edition)
Combined TNM stage : compilation of pathological (pTNM) and clinical (cTNM) stage.
pTNM prevails over cTNM, except when cTNM stage is IV
Stage X: diagnoses with an unknown stage
Stage NA: diagnoses with a histological diagnosis where no stage can be evaluated (Not Applicable)

Figure 3: Cervical Cancer: Bar chart of known combined stage, Belgium 2016



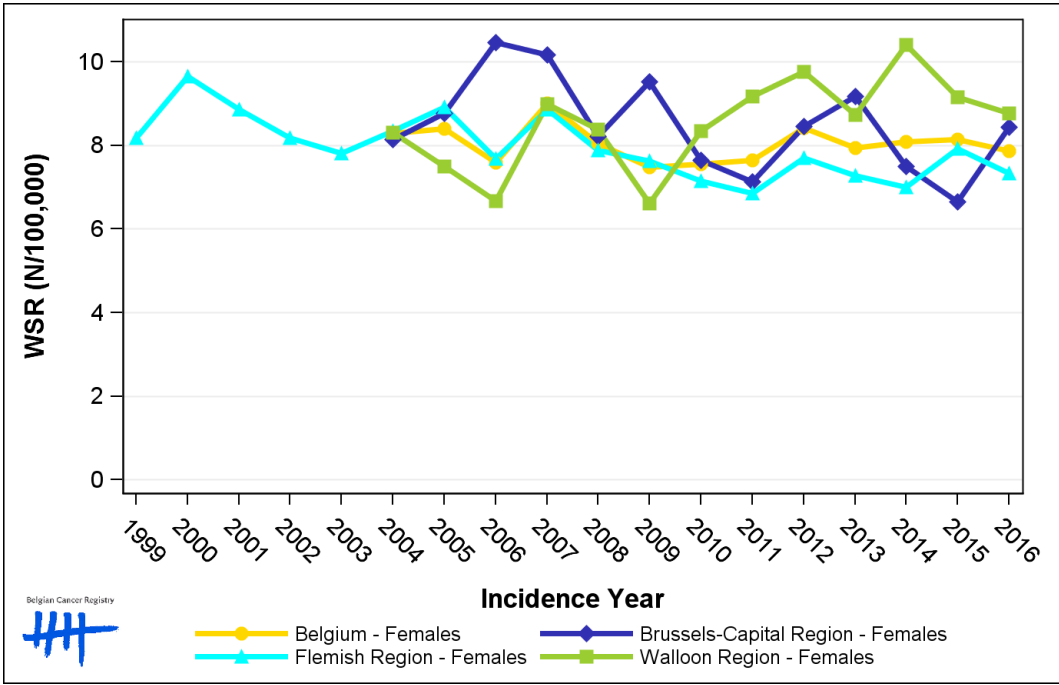
1.4. Trends in incidence

Table 4: Cervical Cancer: Age-standardised incidence rates (WSR) and average annual percentage change (AAPC) by incidence year and region

Females	2002	2003	2004	2005	2006	2007	2008	2009	2010	2011	2012	2013	2014	2015	2016	AAPC	95% CI
Belgium			8.3	8.4	7.6	9.0	8.1	7.5	7.6	7.6	8.4	7.9	8.1	8.1	7.9	-0.3	[-1.1; 0.6]
Brussels-Capital Region			8.1	8.8	10.5	10.2	8.2	9.5	7.6	7.1	8.5	9.2	7.5	6.7	8.4	-1.6	[-3.6; 0.3]
Flemish Region	8.2	7.8	8.3	8.9	7.7	8.9	7.9	7.6	7.2	6.8	7.7	7.3	7.0	7.9	7.3	-1.1	[-1.9; -0.2]
Walloon Region			8.3	7.5	6.7	9.0	8.4	6.6	8.3	9.2	9.8	8.7	10.4	9.2	8.8	2.0	[0.2; 3.9]

WSR=Age-Standardised Rate, using the World Standard Population (N/100,000 person-years)
AAPC = Average Annual Percentage Change over the 2004-2016 period (except for the Flemish region : 2002-2016).

Figure 4: Cervical Cancer: Age-standardised incidence rates (WSR) by incidence year and region



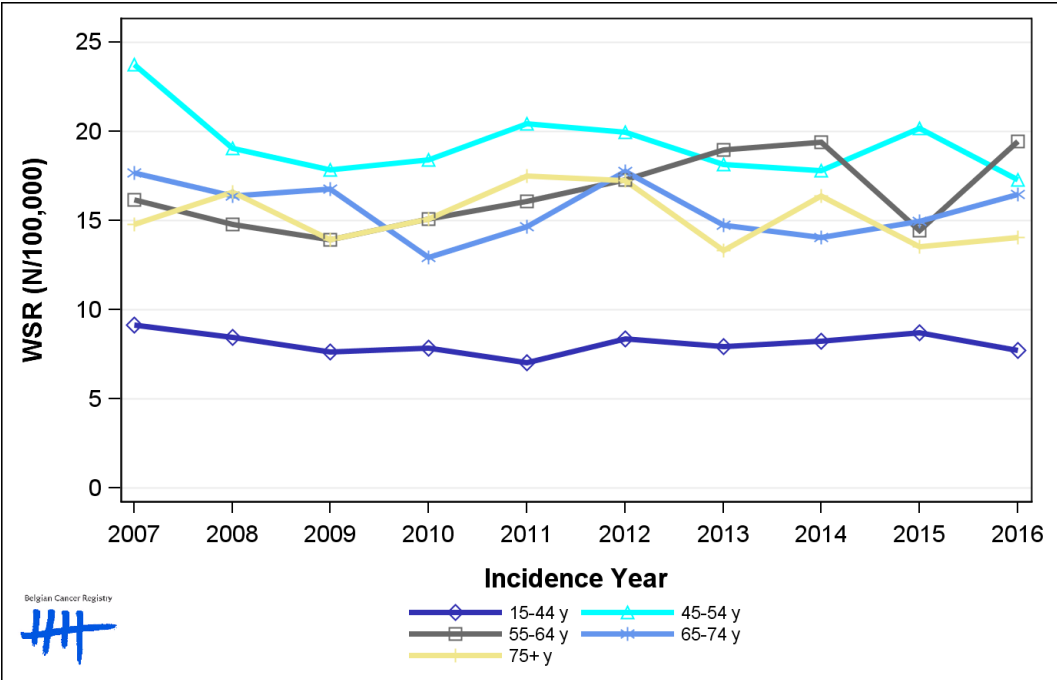
1.5. Incidence by broad age groups

Table 5: Cervical Cancer: Number of new diagnoses and age-standardised incidence rates (WSR) by broad age groups and incidence year, Belgium

	N											WSR									
	2007	2008	2009	2010	2011	2012	2013	2014	2015	2016		2007	2008	2009	2010	2011	2012	2013	2014	2015	2016
Females																					
All ages	683	633	591	599	625	679	630	661	643	640		9.0	8.1	7.5	7.6	7.6	8.4	7.9	8.1	8.1	7.9
0-14 y	0	0	0	0	0	0	0	0	0	0		0.0	0.0	0.0	0.0	0.0	0.0	0.0	0.0	0.0	0.0
15-44 y	234	219	200	200	177	213	202	208	220	193		9.1	8.4	7.6	7.8	7.0	8.4	7.9	8.3	8.7	7.7
45-54 y	180	145	139	144	162	158	145	141	156	135		23.7	19.1	17.9	18.4	20.4	20.0	18.2	17.8	20.2	17.3
55-64 y	100	94	91	101	110	119	131	136	103	141		16.1	14.8	13.9	15.1	16.1	17.3	19.0	19.4	14.4	19.5
65-74 y	85	82	82	63	72	90	76	74	81	91		17.7	16.4	16.8	12.9	14.6	17.8	14.7	14.0	15.0	16.5
75+ y	84	93	79	91	104	99	76	102	83	80		14.8	16.6	13.9	15.1	17.5	17.2	13.3	16.4	13.5	14.1

N=Number of invasive tumours
WSR=Age-Standardised Rate, using the World Standard Population (N/100,000 person-years)

Figure 5: Cervical Cancer: Age-standardised incidence rates (WSR) versus incidence year by broad age groups, Belgium



Belgian Cancer Registry

2. Relative survival

Table 6: Cervical Cancer: 5-year relative survival proportion by age group and region, Belgium 2012-2016

5-year relative survival 2012-2016 (%)			
Females			
	N at risk	estimate	95% CI
Overall	3,221	69.4	[67.5, 71.4]
Age group			
15-44 years	1,027	87.9	[85.5, 90.0]
45-64 years	1,348	67.7	[64.6, 70.7]
65+ years	846	48.7	[44.1, 53.4]
Region			
Brussels-Capital Region	314	69.9	[63.1, 75.9]
Flemish Region	1,727	71.4	[68.8, 74.0]
Walloon Region	1,180	66.5	[63.0, 69.8]

Figure 6: Cervical Cancer: relative survival proportion, Belgium 2012-2016

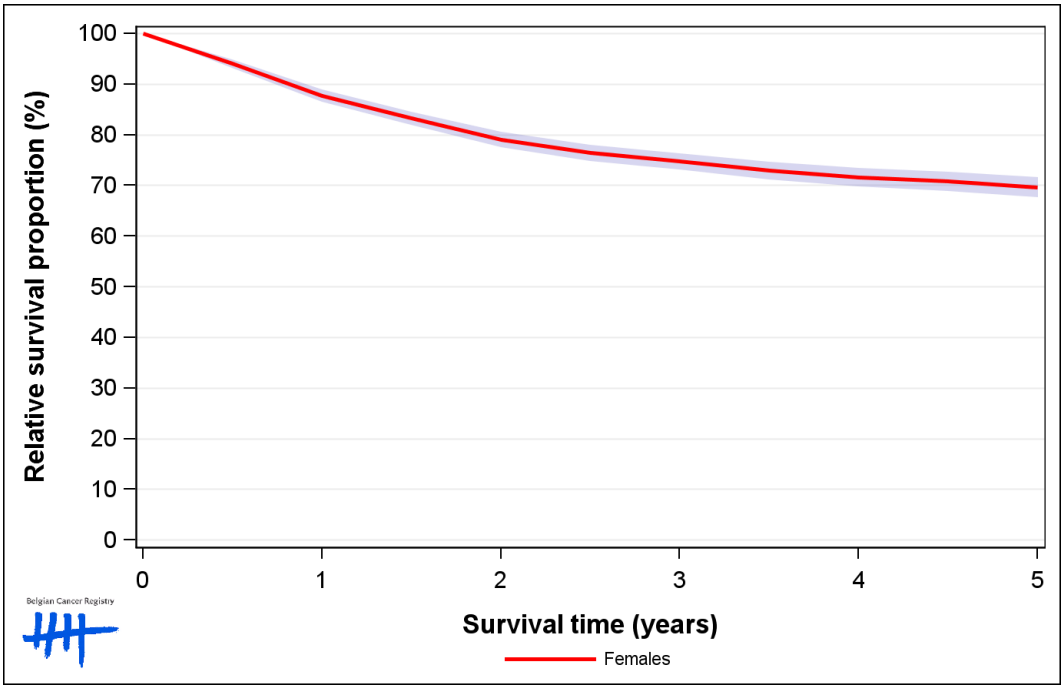


Figure 7: Cervical Cancer: relative survival proportion by age group, Belgium 2012-2016

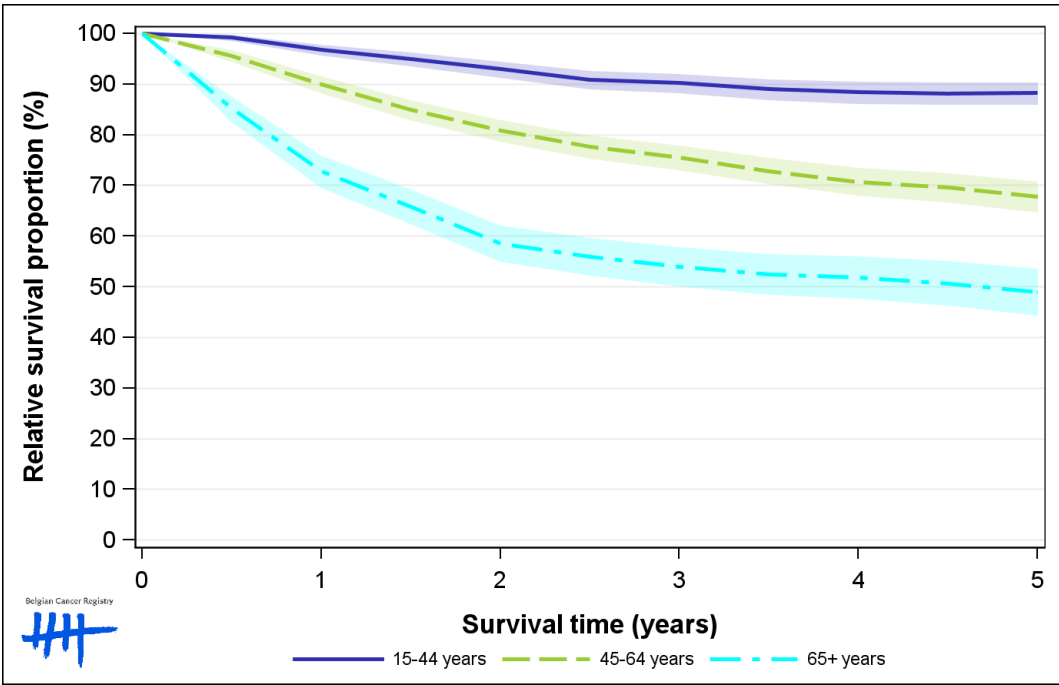


Figure 8: Cervical Cancer: relative survival proportion by region, Belgium 2012-2016

