

Belgian Cancer Registry



Cancer Fact Sheet **Central nervous system**

ICD10 : C71-C72

Belgium 2016

1. Cancer Incidence

1.1. Number of new diagnoses and incidence rates

Table 1: Central Nervous System Cancers: Average age at diagnosis, number of new cancer diagnoses (N), crude rate (CR), age-standardised incidence rates (ESR and WSR) and cumulative risk by sex and region, 2016

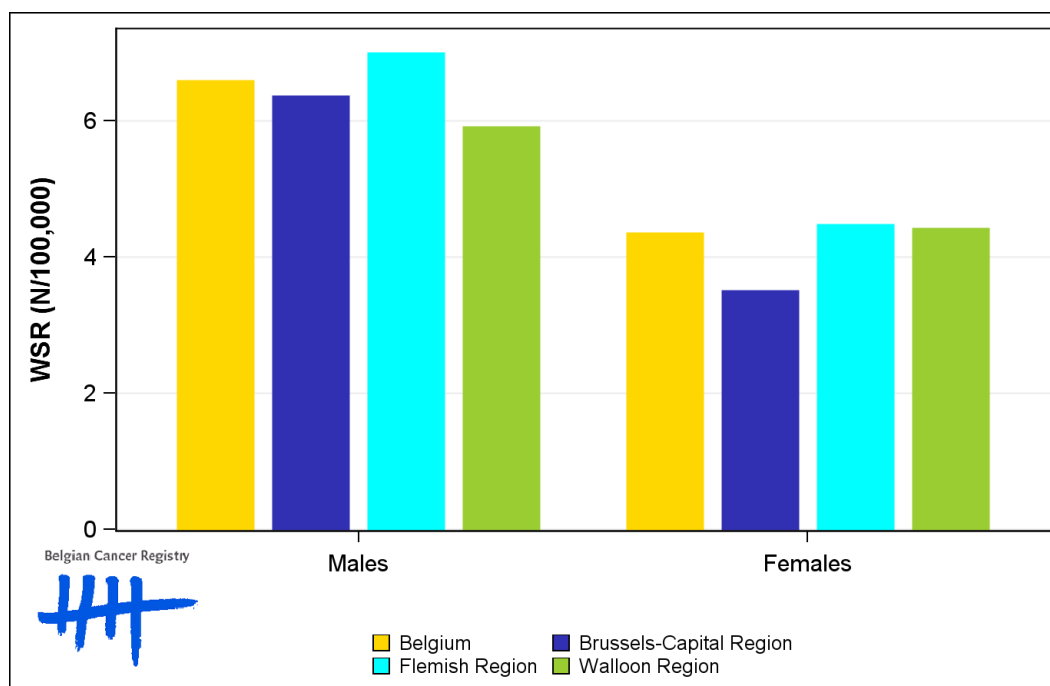
Males	Age (years)	N	CR	ESR	WSR	CRi
Belgium	56.4	521	9.4	8.1	6.6	0.66
Brussels-Capital Region	52.2	43	7.4	7.5	6.4	0.64
Flemish Region	56.9	330	10.3	8.6	7.0	0.69
Walloon Region	56.4	148	8.4	7.3	5.9	0.62

Females	Age (years)	N	CR	ESR	WSR	CRi
Belgium	58.1	365	6.4	5.2	4.3	0.44
Brussels-Capital Region	56.2	26	4.3	4.2	3.5	0.37
Flemish Region	58.7	223	6.8	5.4	4.5	0.47
Walloon Region	57.4	116	6.3	5.1	4.4	0.43

CR=Crude (all ages) Rate (N/100,000 person-years)
 ESR=Age-Standardised Rate, using the European Standard Population (N/100,000 person-years)
 WSR=Age-Standardised Rate, using the World Standard Population (N/100,000 person-years)
 CRi=Cumulative Risk for 0-74 years (%)



Figure 1: Central Nervous System Cancers: Age-standardised incidence rates by sex and region, 2016



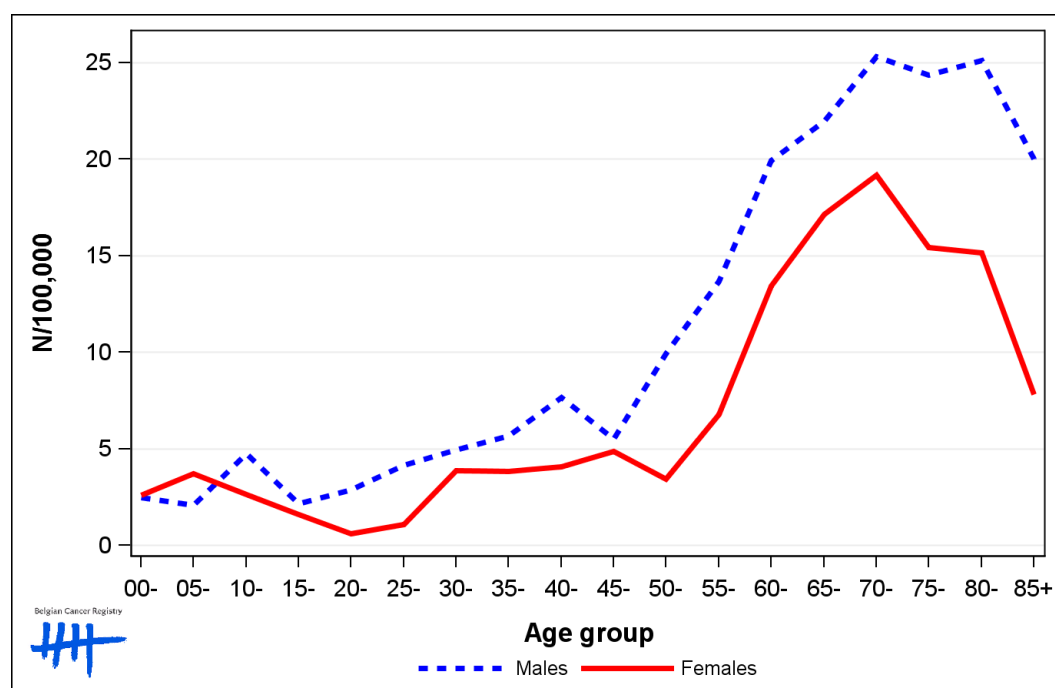
1.2. Age-specific incidence rates

Table 2: Central Nervous System Cancers: Age-specific incidence rates, crude rate (CR) and age-standardised incidence rates (ESR and WSR) by sex, Belgium 2016

	00-	05-	10-	15-	20-	25-	30-	35-	40-	45-	50-	55-	60-	65-	70-	75-	80-	85+	CR	ESR	WSR
Males	2.5	2.1	4.7	2.2	2.9	4.1	5.0	5.7	7.7	5.5	9.9	13.7	19.9	22.0	25.3	24.4	25.1	20.0	9.4	8.1	6.6
Females	2.6	3.7	2.7	1.6	0.6	1.1	3.9	3.8	4.1	4.9	3.4	6.8	13.5	17.1	19.2	15.4	15.1	7.8	6.4	5.2	4.3

CR=Crude (all ages) Rate (N/100,000 person-years)
 ESR=Age-Standardised Rate, using the European Standard Population (N/100,000 person-years)
 WSR=Age-Standardised Rate, using the World Standard Population (N/100,000 person-years)

Figure 2: Central Nervous System Cancers: Age-specific incidence rates by sex, 2016



1.3. Trends in incidence

Table 3: Central Nervous System Cancers: Age-standardised incidence rates (WSR) and average annual percentage change (AAPC) by incidence year, sex and region

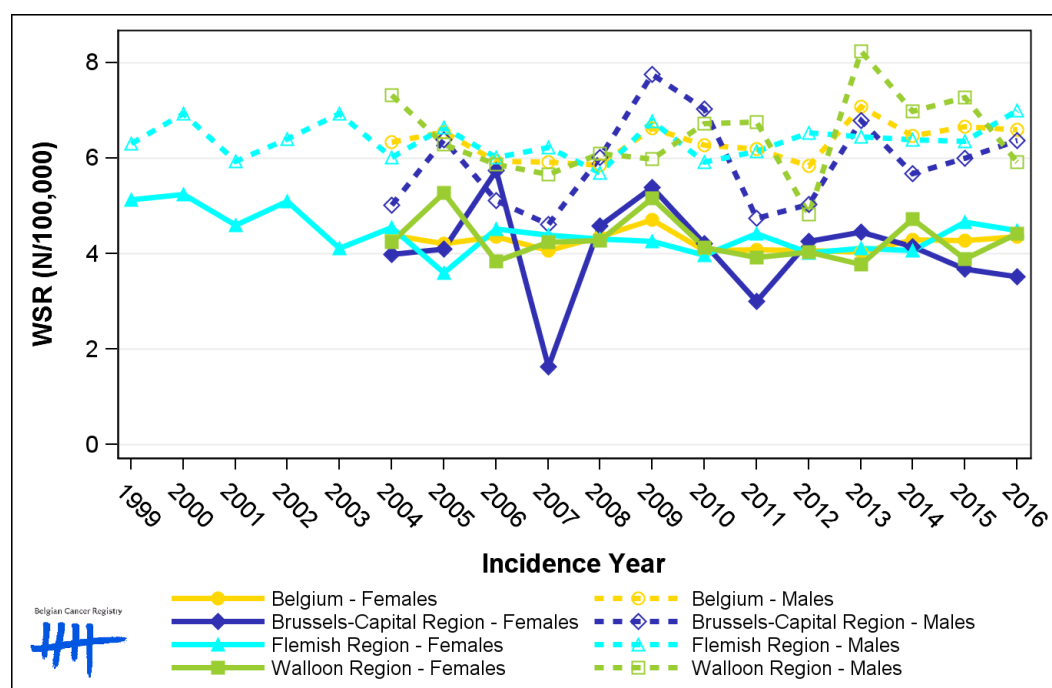
Males		2002	2003	2004	2005	2006	2007	2008	2009	2010	2011	2012	2013	2014	2015	2016	AAPC	95% CI
Belgium				6.3	6.5	5.9	5.9	5.9	6.6	6.3	6.2	5.8	7.1	6.5	6.7	6.6	0.6	[-0.3; 1.6]
Brussels-Capital Region				5.0	6.4	5.1	4.6	6.0	7.8	7.0	4.7	5.0	6.8	5.7	6.0	6.4	1.0	[-1.6; 3.8]
Flemish Region	6.4	6.9	6.0	6.6	6.0	6.2	5.7	6.8	5.9	6.1	6.5	6.4	6.4	6.4	7.0	0.3	[-0.4; 1.0]	
Walloon Region			7.3	6.3	5.9	5.7	6.1	6.0	6.7	6.8	4.8	8.2	7.0	7.3	5.9	0.5	[-1.8; 2.9]	

Females		2002	2003	2004	2005	2006	2007	2008	2009	2010	2011	2012	2013	2014	2015	2016	AAPC	95% CI
Belgium				4.4	4.2	4.4	4.1	4.3	4.7	4.1	4.1	4.1	4.0	4.3	4.3	4.3	-0.2	[-0.9; 0.6]
Brussels-Capital Region				4.0	4.1	5.7	1.6	4.6	5.4	4.2	3.0	4.3	4.5	4.1	3.7	3.5	-0.2	[-5.3; 5.2]
Flemish Region	5.1	4.1	4.6	3.6	4.5	4.4	4.3	4.3	4.3	4.0	4.4	4.0	4.1	4.1	4.7	4.5	-0.2	[-1.3; 0.9]
Walloon Region			4.2	5.3	3.8	4.2	4.3	5.2	4.1	3.9	4.0	3.8	4.7	3.9	4.4	-0.6	[-2.4; 1.1]	

WSR=Age-Standardised Rate, using the World Standard Population (N/100,000 person-years)

AAPC = Average Annual Percentage Change over the 2004-2016 period (except for the Flemish region : 2002-2016).

Figure 3: Central Nervous System Cancers: Age-standardised incidence rates (WSR) by incidence year, sex and region



1.4. Incidence by broad age groups

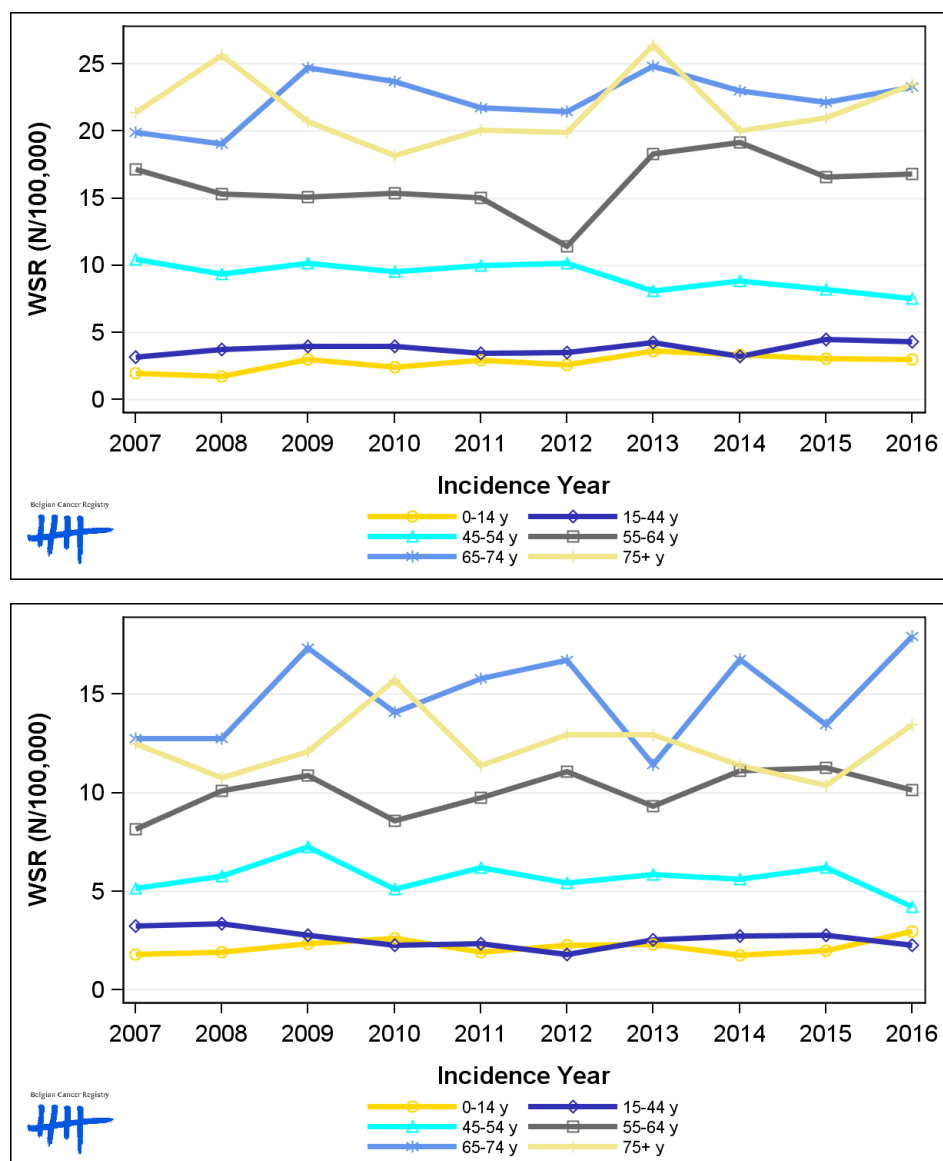
Table 4: Central Nervous System Cancers: Number of new diagnoses and age-standardised incidence rates (WSR) by broad age groups and incidence year by sex, Belgium

	N										WSR									
	2007	2008	2009	2010	2011	2012	2013	2014	2015	2016	2007	2008	2009	2010	2011	2012	2013	2014	2015	2016
Males																				
All ages	431	440	472	462	460	438	536	498	505	521	5.9	5.9	6.6	6.3	6.2	5.8	7.1	6.5	6.7	6.6
0-14 y	18	17	28	22	28	25	35	32	29	30	2.0	1.7	3.0	2.4	2.9	2.6	3.6	3.3	3.1	3.0
15-44 y	70	85	92	93	83	82	98	76	103	100	3.2	3.7	4.0	4.0	3.5	3.5	4.3	3.2	4.5	4.3
45-54 y	81	73	80	77	82	84	67	73	68	63	10.4	9.4	10.2	9.5	10.0	10.2	8.1	8.9	8.2	7.5
55-64 y	105	94	96	100	100	76	123	130	115	118	17.2	15.3	15.1	15.4	15.1	11.4	18.3	19.2	16.6	16.8
65-74 y	86	83	106	105	96	97	115	109	108	117	19.9	19.0	24.7	23.7	21.7	21.5	24.8	23.0	22.2	23.3
75+ y	71	88	70	65	71	74	98	78	82	93	21.4	25.7	20.7	18.2	20.1	19.9	26.4	20.0	21.0	23.5
Females																				
All ages	311	328	360	329	330	340	319	355	343	365	4.1	4.3	4.7	4.1	4.1	4.0	4.3	4.3	4.3	4.3
0-14 y	15	17	20	23	17	21	21	16	18	28	1.8	1.9	2.3	2.6	1.9	2.3	2.3	1.8	2.0	3.0
15-44 y	73	77	62	51	54	42	55	62	62	54	3.3	3.4	2.8	2.3	2.3	1.8	2.5	2.7	2.8	2.3
45-54 y	39	45	57	41	50	44	47	45	50	33	5.2	5.8	7.3	5.1	6.2	5.4	5.8	5.6	6.2	4.2
55-64 y	50	64	71	57	66	76	64	77	80	72	8.2	10.1	10.9	8.6	9.7	11.1	9.3	11.1	11.3	10.1
65-74 y	66	66	84	70	78	84	60	88	72	99	12.8	12.8	17.4	14.1	15.8	16.7	11.4	16.8	13.5	17.9
75+ y	68	59	66	87	65	73	72	67	61	79	12.5	10.8	12.1	15.7	11.4	12.9	13.0	11.4	10.4	13.5

N=Number of invasive tumours

WSR=Age-Standardised Rate, using the World Standard Population (N/100,000 person-years)

Figure 4: Central Nervous System Cancers: Age-standardised incidence rates (WSR) versus incidence year by broad age groups for males (top) and females (bottom), Belgium



2. Relative survival

Table 5: Central Nervous System Cancers: 5-year relative survival proportion by sex, age group and region, Belgium 2012-2016

	5-year relative survival 2012-2016 (%)					
	Males			Females		
	N at risk	estimate	95% CI	N at risk	estimate	95% CI
Overall	2,327	21.7	[19.7, 23.8]	1,604	23.7	[21.3, 26.3]
Age group						
15-59 years	1,041	40.0	[36.4, 43.6]	642	46.6	[42.1, 51.1]
60-74 years	863	8.2	[6.1, 10.9]	612	10.7	[7.9, 14.2]
75+ years	423	2.4	[0.9, 5.5]	350		
Region						
Brussels-Capital Region	178	26.2	[19.0, 34.1]	138	30.4	[21.7, 39.6]
Flemish Region	1,437	21.9	[19.4, 24.6]	978	23.8	[20.7, 27.2]
Walloon Region	712	20.2	[16.7, 24.1]	488	21.6	[17.6, 26.1]

Figure 5: Central Nervous System Cancers: relative survival proportion by sex, Belgium 2012-2016

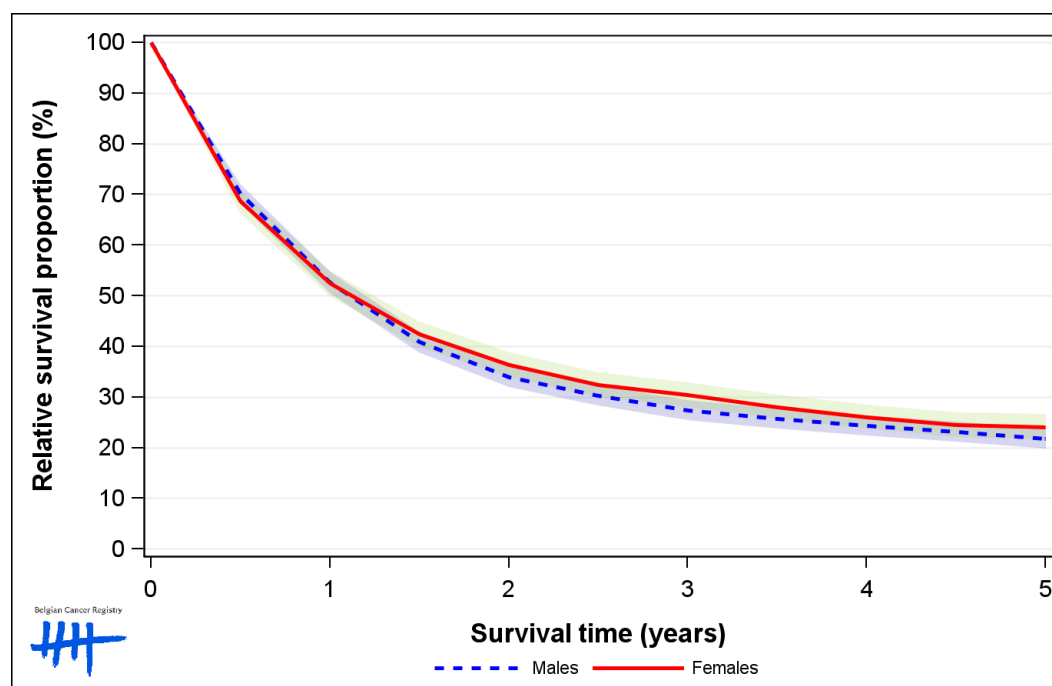


Figure 6: Central Nervous System Cancers: relative survival proportion by age group in males, Belgium 2012-2016

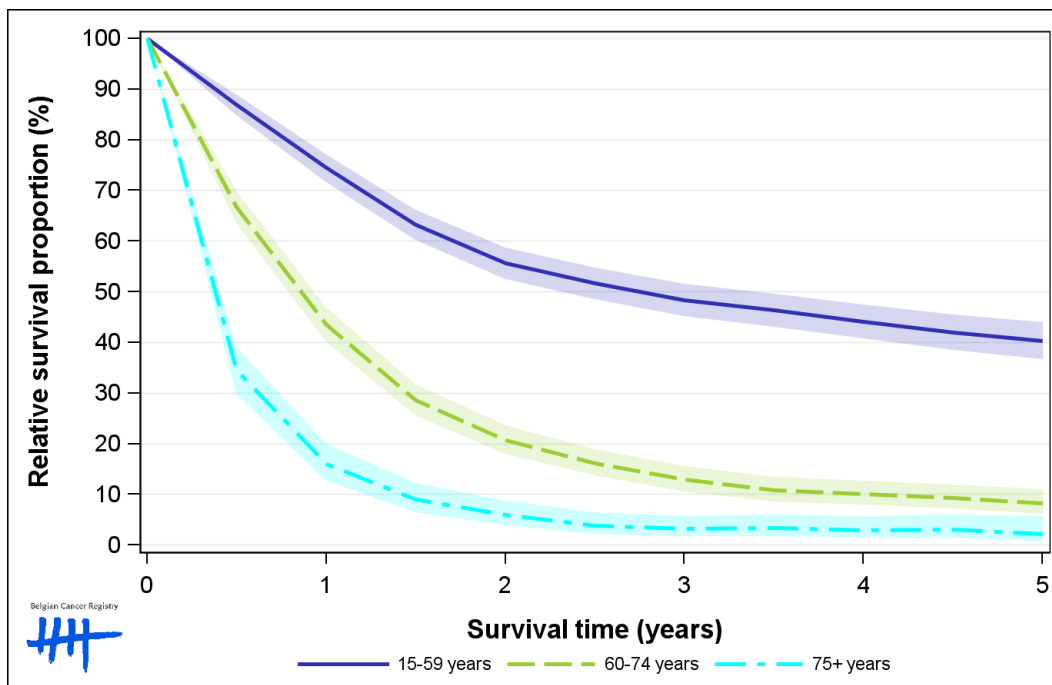


Figure 7: Central Nervous System Cancers: relative survival proportion by age group in females, Belgium 2012-2016

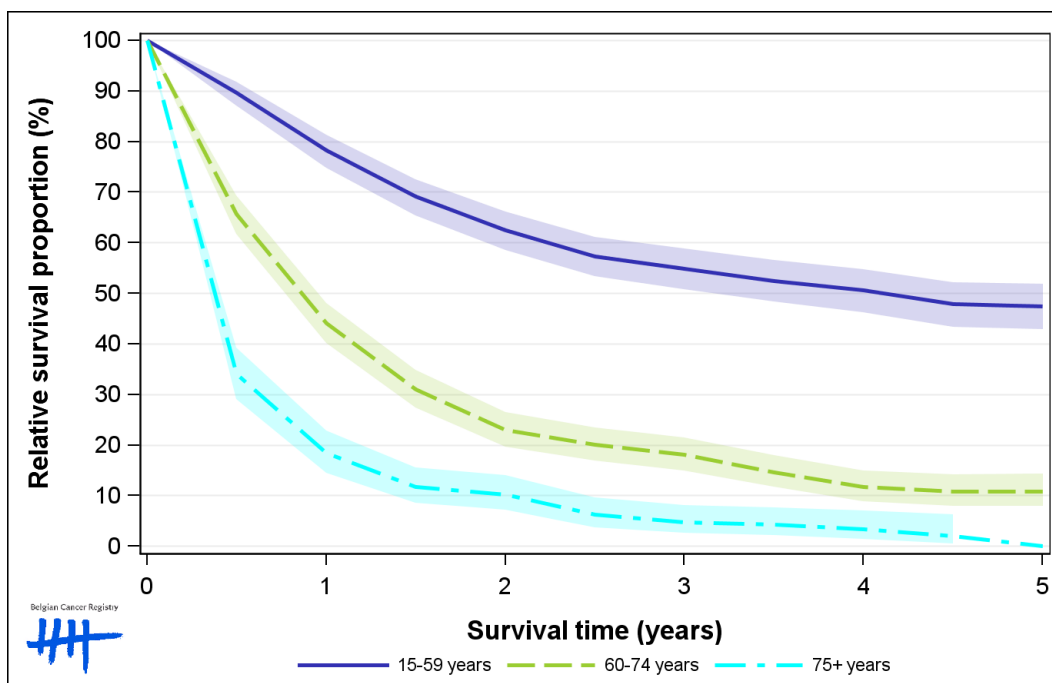


Figure 8: Central Nervous System Cancers: relative survival proportion by region in males, Belgium 2012-2016

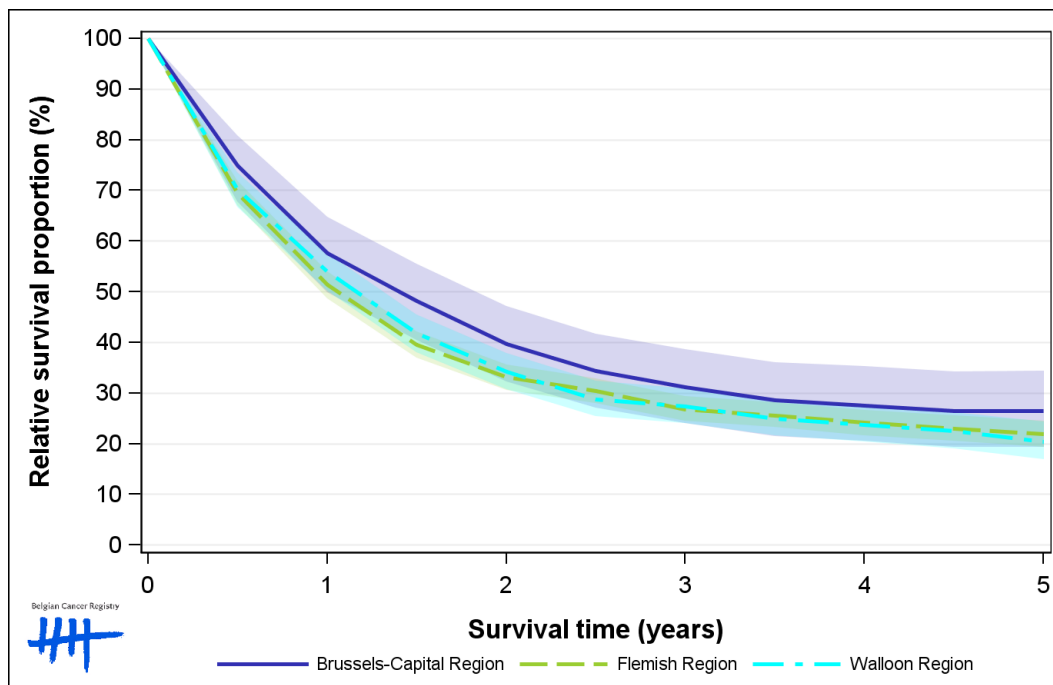


Figure 9: Central Nervous System Cancers: relative survival proportion by region in females, Belgium 2012-2016

