

Belgian Cancer Registry



Cancer Fact Sheet **Bladder Cancer**

ICD10 : C67

Belgium 2016

1. Cancer Incidence

1.1. Number of new diagnoses and incidence rates

Table 1: Bladder Cancer: Average age at diagnosis, number of new cancer diagnoses (N), crude rate (CR), age-standardised incidence rates (ESR and WSR) and cumulative risk by sex and region, 2016

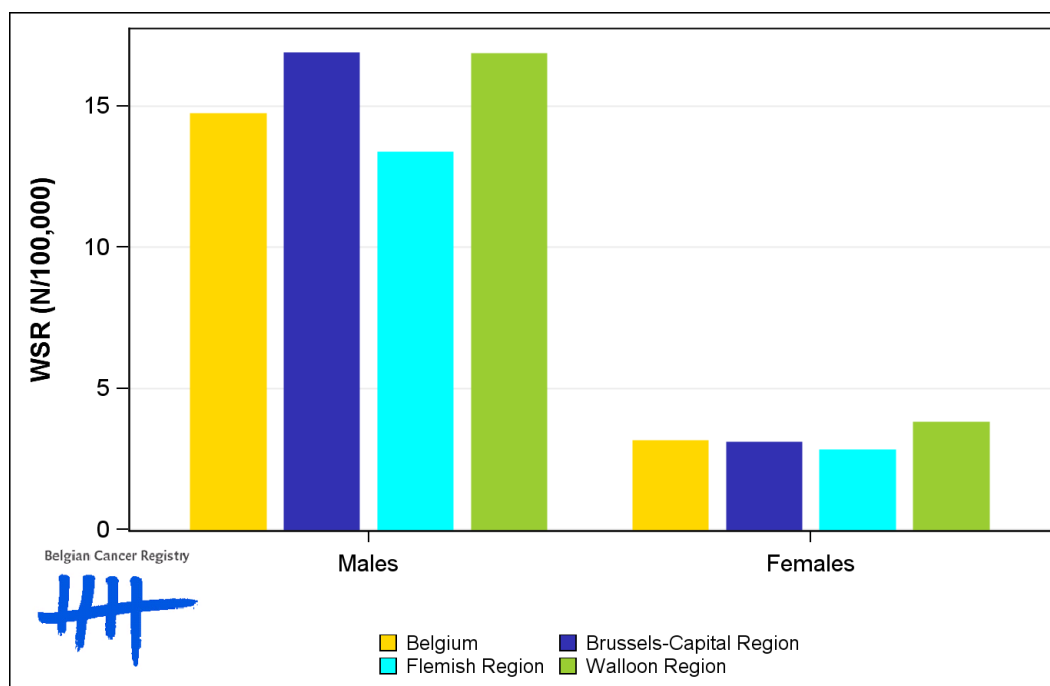
Males	Age (years)	N	CR	ESR	WSR	CRi
Belgium	73.0	1,841	33.2	23.0	14.7	1.72
Brussels-Capital Region	70.9	150	25.9	25.9	16.9	1.87
Flemish Region	74.1	1,075	33.6	21.1	13.4	1.54
Walloon Region	71.7	616	35.1	26.1	16.9	2.04

Females	Age (years)	N	CR	ESR	WSR	CRi
Belgium	74.7	506	8.8	4.8	3.1	0.36
Brussels-Capital Region	74.7	41	6.7	4.9	3.1	0.35
Flemish Region	75.8	285	8.7	4.4	2.8	0.32
Walloon Region	73.1	180	9.8	5.7	3.8	0.44

CR=Crude (all ages) Rate (N/100,000 person-years)
 ESR=Age-Standardised Rate, using the European Standard Population (N/100,000 person-years)
 WSR=Age-Standardised Rate, using the World Standard Population (N/100,000 person-years)
 CRi=Cumulative Risk for 0-74 years (%)



Figure 1: Bladder Cancer: Age-standardised incidence rates by sex and region, 2016



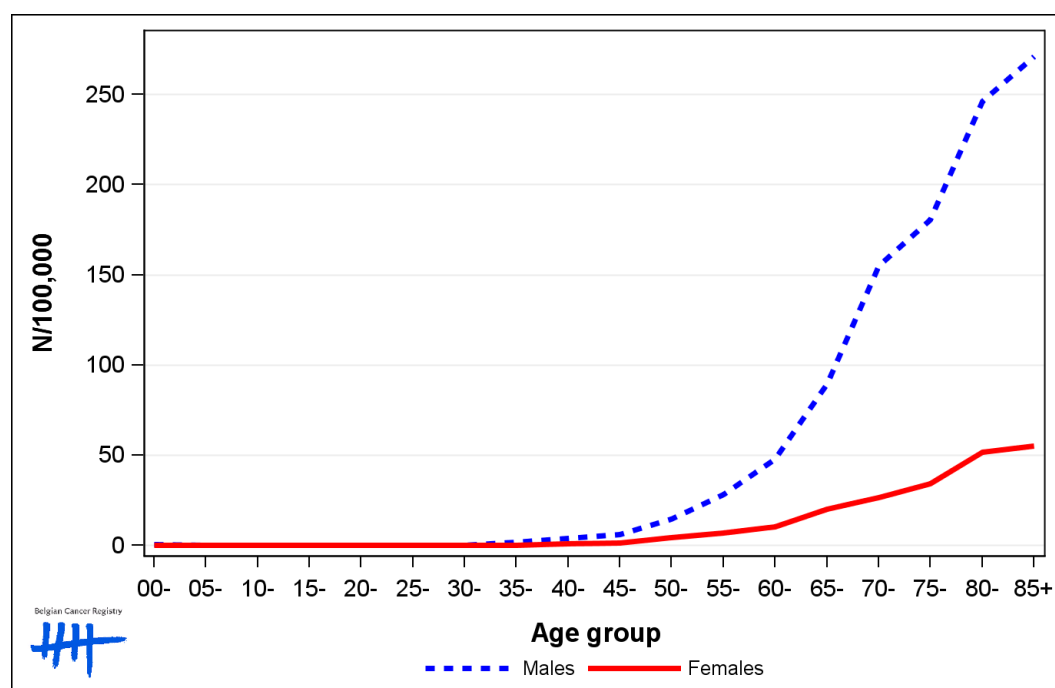
1.2. Age-specific incidence rates

Table 2: Bladder Cancer: Age-specific incidence rates, crude rate (CR) and age-standardised incidence rates (ESR and WSR) by sex, Belgium 2016

	00-	05-	10-	15-	20-	25-	30-	35-	40-	45-	50-	55-	60-	65-	70-	75-	80-	85+	CR	ESR	WSR
Males	0.3	0.0	0.0	0.0	0.0	0.0	0.3	1.6	4.0	6.2	14.8	28.4	48.0	89.6	154.8	180.4	246.3	271.0	33.2	23.0	14.7
Females	0.0	0.0	0.0	0.0	0.3	0.3	0.3	0.0	1.1	1.5	4.4	6.8	10.5	20.3	26.4	34.1	51.7	55.2	8.8	4.8	3.1

CR=Crude (all ages) Rate (N/100,000 person-years)
 ESR=Age-Standardised Rate, using the European Standard Population (N/100,000 person-years)
 WSR=Age-Standardised Rate, using the World Standard Population (N/100,000 person-years)

Figure 2: Bladder Cancer: Age-specific incidence rates by sex, 2016



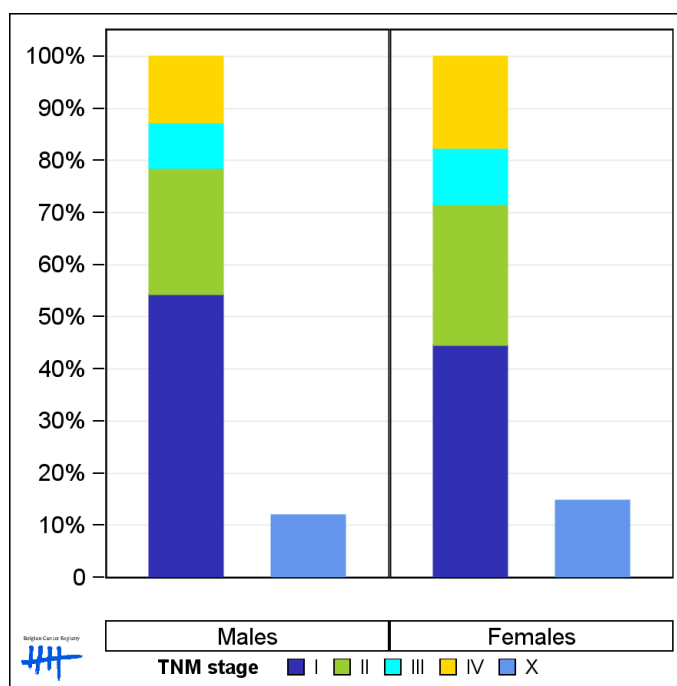
1.3. Combined stage

Table 3: Bladder Cancer: Distribution of combined stage by sex, Belgium 2016

	Stage I	Stage II	Stage III	Stage IV	Stage X	Stage NA	Total
Males							
N	878	391	142	205	221	4	1,841
%	47.7	21.2	7.7	11.1	12.0	0.2	100
Females							
N	192	117	46	76	75	0	506
%	37.9	23.1	9.1	15.0	14.8	0.0	100

Staging according to the TNM 7th edition (Ref:Sobin LH, Gospodarowicz MK, Wittekind Ch. TNM classification of malignant tumours, UICC 7th edition)
 Combined TNM stage : compilation of pathological (pTNM) and clinical (cTNM) stage.
 pTNM prevails over cTNM, except when cTNM stage is IV
 Stage X: diagnoses with an unknown stage
 Stage NA: diagnoses with a histological diagnosis where no stage can be evaluated (Not Applicable)

Figure 3: Bladder Cancer: Bar chart of known combined stage by sex, Belgium 2016



1.4. Trends in incidence

Table 4: Bladder Cancer: Age-standardised incidence rates (WSR) and average annual percentage change (AAPC) by incidence year, sex and region

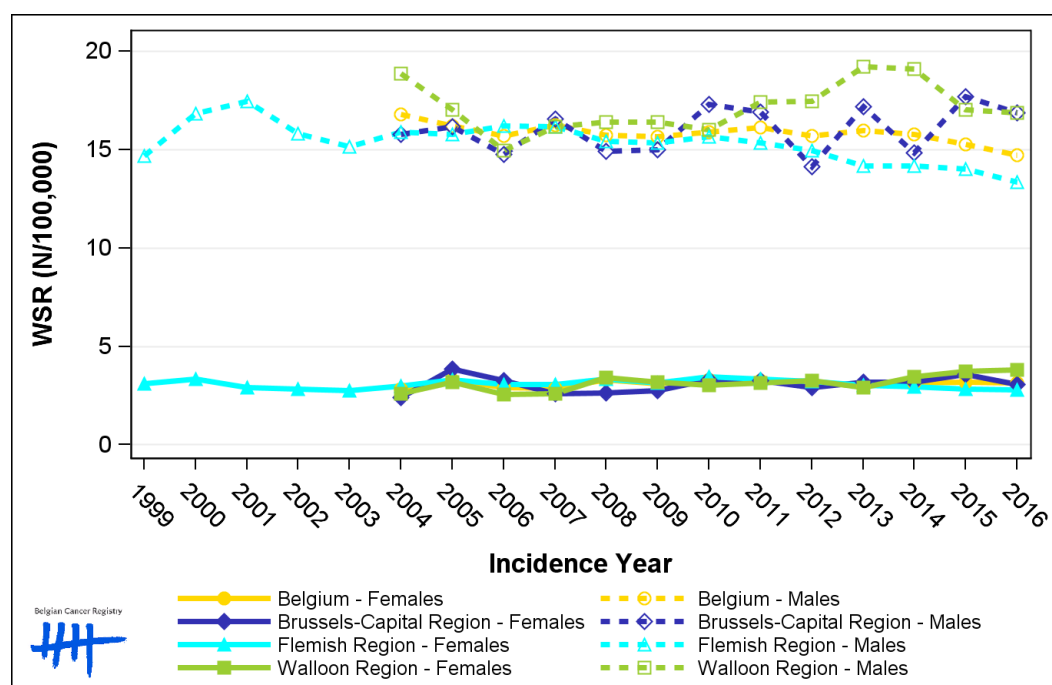
Males	2002	2003	2004	2005	2006	2007	2008	2009	2010	2011	2012	2013	2014	2015	2016	AAPC	95% CI
Belgium			16.8	16.2	15.7	16.2	15.7	15.7	15.9	16.1	15.7	16.0	15.8	15.3	14.7	-0.8	[-1.2; -0.5]
Brussels-Capital Region			15.8	16.2	14.7	16.6	14.9	15.0	17.3	16.9	14.1	17.2	14.8	17.7	16.9	0.5	[-0.6; 1.8]
Flemish Region	15.8	15.1	15.9	15.8	16.2	16.2	15.4	15.3	15.7	15.3	15.0	14.2	14.2	14.0	13.4	-1.1	[-1.4; -0.9]
Walloon Region			18.9	17.0	15.0	16.2	16.4	16.4	16.0	17.4	17.4	19.2	19.1	17.0	16.9	-1.1	[-1.9; -0.3]

Females	2002	2003	2004	2005	2006	2007	2008	2009	2010	2011	2012	2013	2014	2015	2016	AAPC	95% CI
Belgium			2.8	3.3	2.9	2.9	3.3	3.1	3.3	3.3	3.2	3.0	3.1	3.2	3.1	0.5	[-0.4; 1.4]
Brussels-Capital Region			2.4	3.8	3.3	2.6	2.6	2.7	3.3	3.2	2.9	3.2	3.2	3.6	3.1	1.1	[-1.0; 3.3]
Flemish Region	2.8	2.7	3.0	3.3	3.1	3.1	3.3	3.1	3.4	3.3	3.2	3.0	2.9	2.8	2.8	-0.1	[-0.6; 0.4]
Walloon Region			2.6	3.2	2.6	2.6	3.4	3.2	3.0	3.1	3.2	2.9	3.5	3.7	3.8	2.5	[1.0; 4.0]

WSR=Age-Standardised Rate, using the World Standard Population (N/100,000 person-years)

AAPC = Average Annual Percentage Change over the 2004-2016 period (except for the Flemish region : 2002-2016).

Figure 4: Bladder Cancer: Age-standardised incidence rates (WSR) by incidence year, sex and region



1.5. Incidence by broad age groups

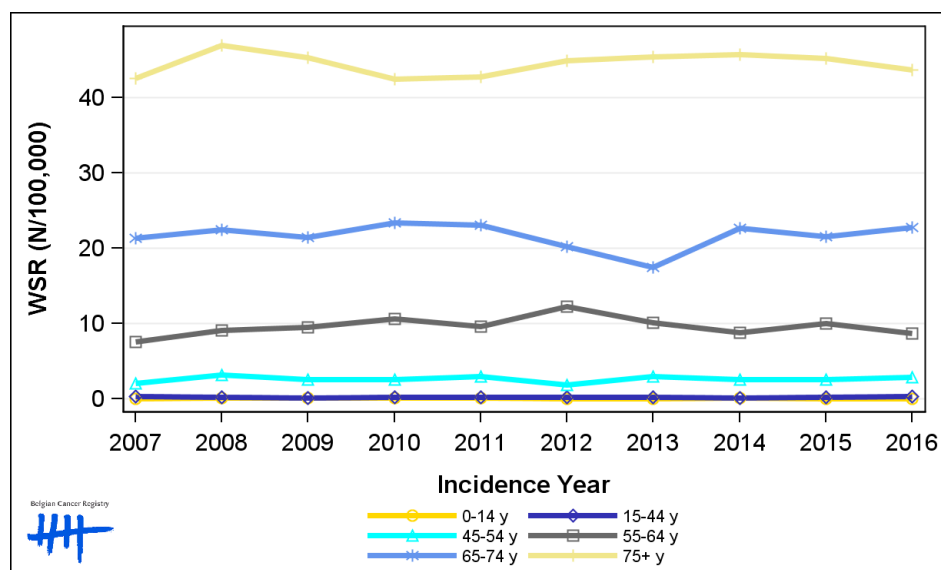
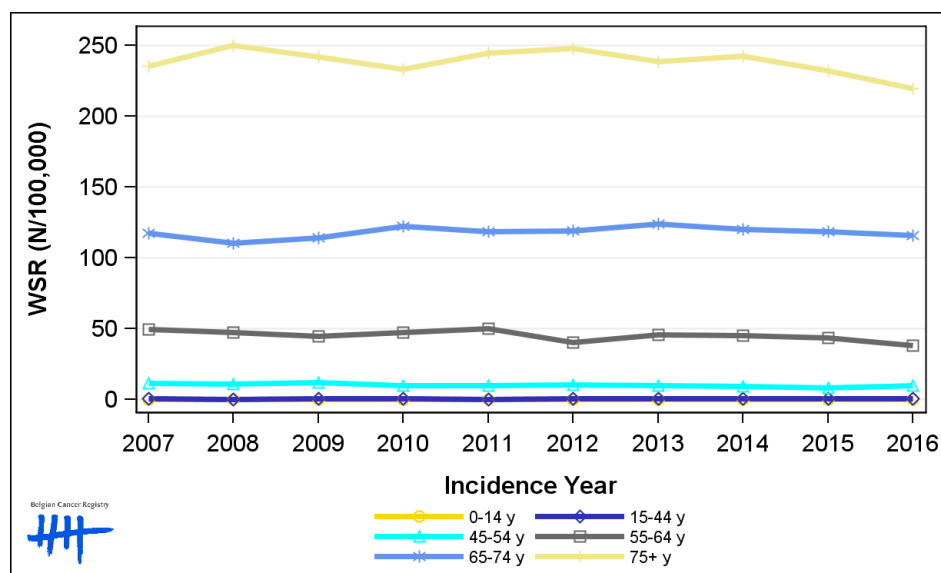
Table 5: Bladder Cancer: Number of new diagnoses and age-standardised incidence rates (WSR) by broad age groups and incidence year by sex, Belgium

	N										WSR									
	2007	2008	2009	2010	2011	2012	2013	2014	2015	2016	2007	2008	2009	2010	2011	2012	2013	2014	2015	2016
Males																				
All ages	1,682	1,704	1,729	1,764	1,832	1,845	1,880	1,904	1,876	1,841	16.2	15.7	15.7	15.9	16.1	15.7	16.0	15.8	15.3	14.7
0-14 y	0	1	0	0	0	2	1	1	0	1	0.0	0.1	0.0	0.0	0.0	0.2	0.1	<0.1	0.0	0.1
15-44 y	25	12	15	17	12	21	14	13	18	22	0.9	0.4	0.5	0.6	0.4	0.8	0.5	0.5	0.7	0.8
45-54 y	88	86	96	81	81	86	82	81	71	86	11.4	10.8	12.0	9.9	9.8	10.3	9.9	9.5	8.3	10.1
55-64 y	293	288	281	304	333	267	305	304	297	267	49.8	47.2	44.6	47.2	50.3	40.3	45.6	45.1	43.4	38.2
65-74 y	523	479	505	546	527	545	576	573	581	583	117.6	110.4	114.1	122.2	118.9	119.4	124.0	120.3	118.9	115.7
75+ y	753	838	832	816	879	924	902	932	909	882	235.6	250.1	241.7	233.3	244.7	248.2	238.8	242.3	232.0	219.5
Females																				
All ages	421	478	465	477	473	495	480	508	508	506	2.9	3.3	3.1	3.3	3.3	3.2	3.0	3.1	3.2	3.1
0-14 y	0	1	1	1	1	0	0	1	0	0	0.0	0.1	0.1	0.1	0.1	0.0	0.0	0.1	0.0	0.0
15-44 y	8	7	4	7	7	6	5	3	7	7	0.3	0.3	0.1	0.3	0.3	0.2	0.2	0.1	0.3	0.3
45-54 y	16	25	20	21	24	15	25	22	21	24	2.1	3.1	2.5	2.6	3.0	1.8	3.0	2.6	2.6	2.9
55-64 y	45	58	62	70	65	83	69	61	70	62	7.6	9.1	9.5	10.6	9.6	12.3	10.1	8.8	10.0	8.7
65-74 y	109	114	106	120	117	109	90	122	116	126	21.4	22.5	21.5	23.4	23.1	20.3	17.5	22.7	21.5	22.7
75+ y	243	273	272	258	259	282	291	299	294	287	42.6	47.0	45.3	42.5	42.8	45.0	45.4	45.8	45.3	43.8

N=Number of invasive tumours

WSR=Age-Standardised Rate, using the World Standard Population (N/100,000 person-years)

Figure 5: Bladder Cancer: Age-standardised incidence rates (WSR) versus incidence year by broad age groups for males (top) and females (bottom), Belgium



2. Relative survival

Table 6: Bladder Cancer: 5-year relative survival proportion by sex, age group and region, Belgium 2012-2016

	5-year relative survival 2012-2016 (%)					
	Males			Females		
	N at risk	estimate	95% CI	N at risk	estimate	95% CI
Overall	9,298	57.7	[56.2, 59.4]	2,481	48.5	[45.7, 51.3]
Age group						
15-59 years	1,015	67.5	[63.9, 70.9]	258	62.3	[55.4, 68.6]
60-74 years	3,753	63.5	[61.4, 65.7]	781	60.1	[55.8, 64.3]
75+ years	4,532	49.8	[47.1, 52.6]	1,442	38.4	[34.3, 42.7]
Region						
Brussels-Capital Region	697	53.7	[47.9, 59.5]	207	49.8	[40.8, 58.9]
Flemish Region	5,455	58.9	[56.9, 61.0]	1,452	49.4	[45.7, 53.1]
Walloon Region	3,146	56.6	[53.9, 59.4]	822	46.4	[41.4, 51.5]

Figure 6: Bladder Cancer: relative survival proportion by sex, Belgium 2012-2016

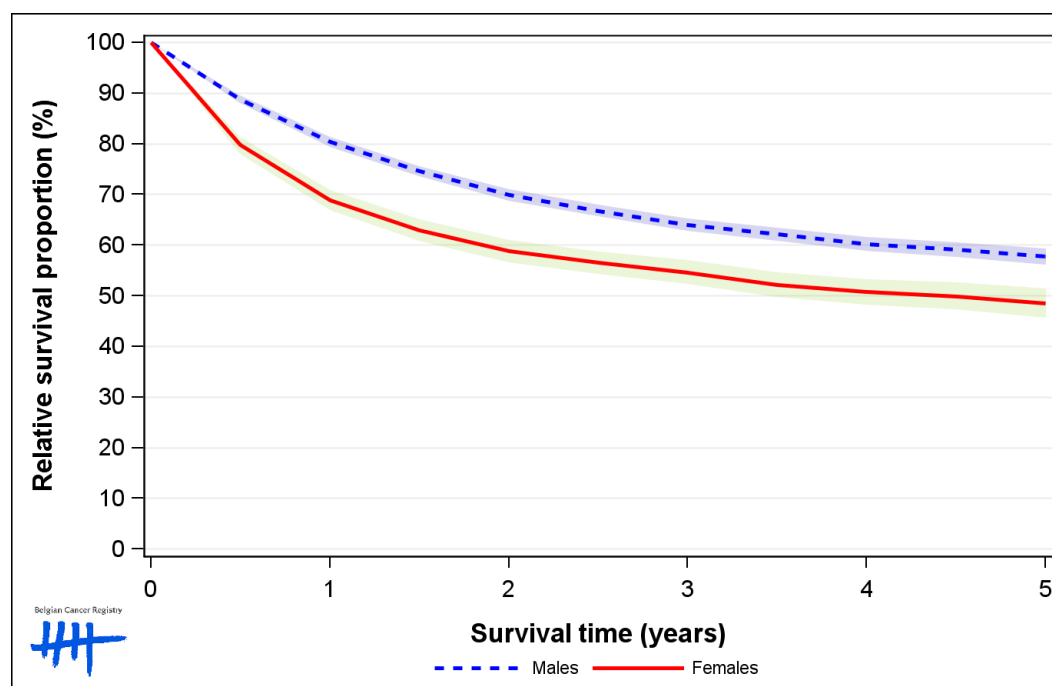


Figure 7: Bladder Cancer: relative survival proportion by age group in males, Belgium 2012-2016

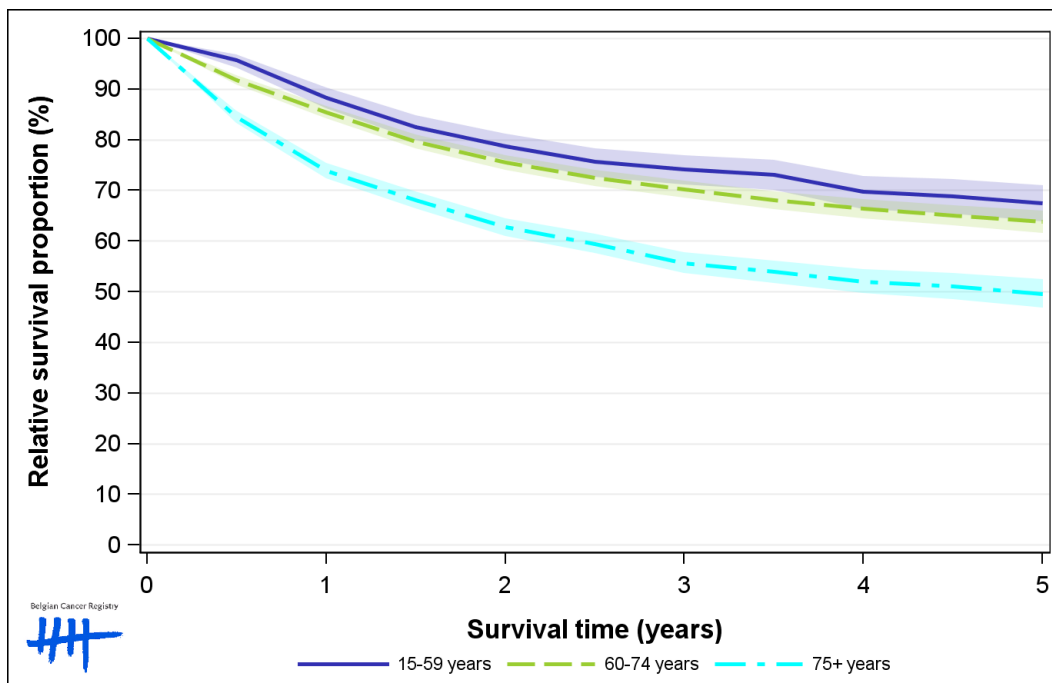


Figure 8: Bladder Cancer: relative survival proportion by age group in females, Belgium 2012-2016

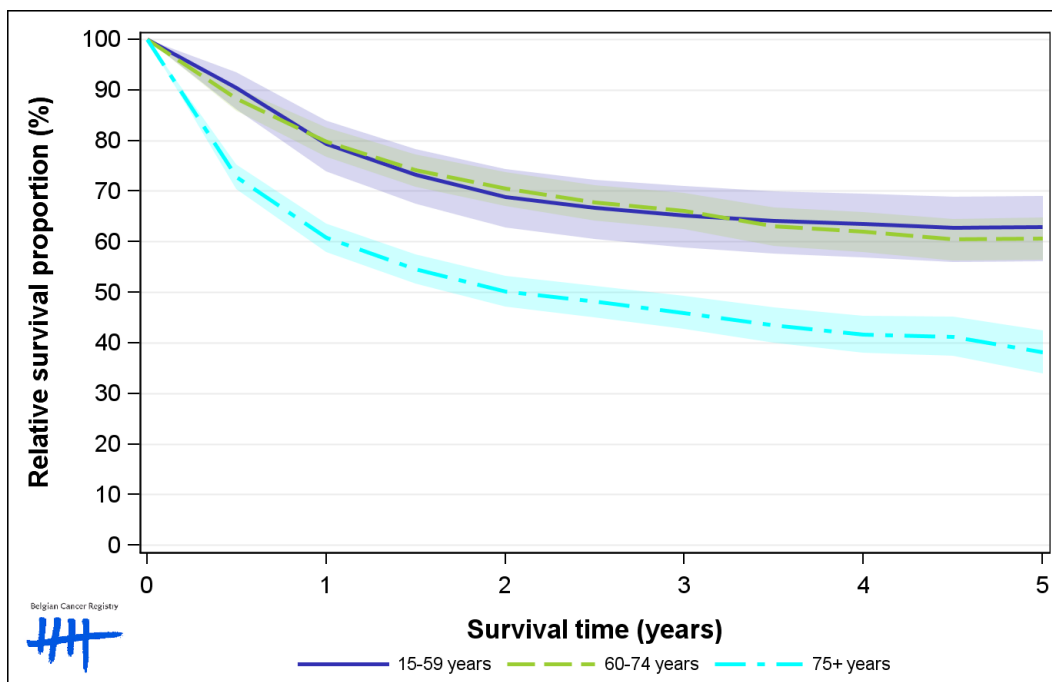


Figure 9: Bladder Cancer: relative survival proportion by region in males, Belgium 2012-2016

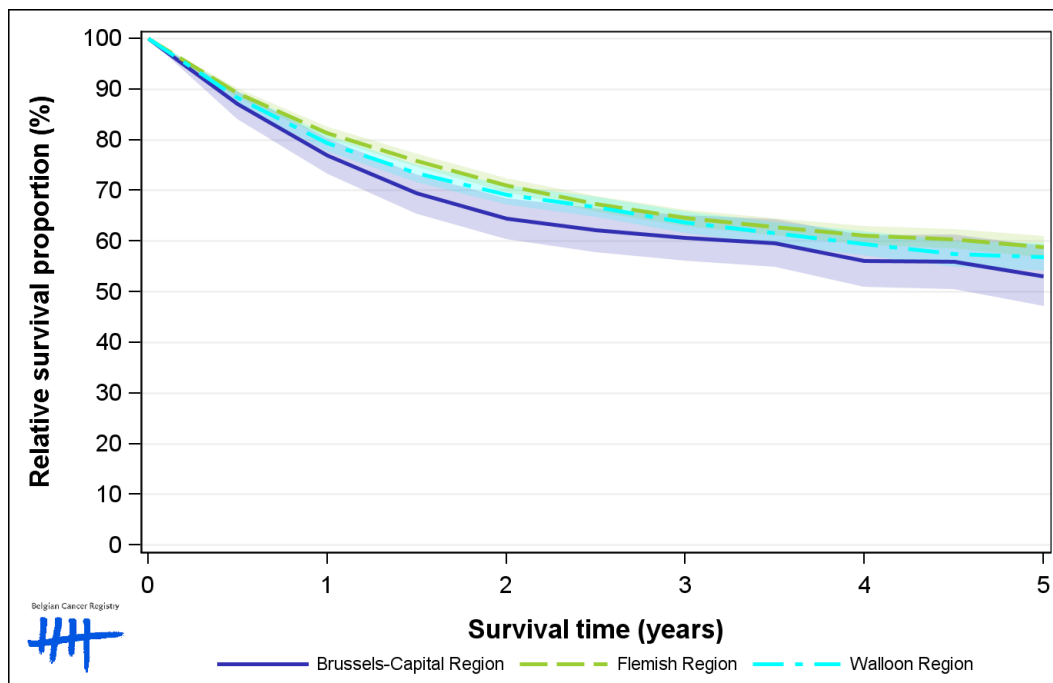


Figure 10: Bladder Cancer: relative survival proportion by region in females, Belgium 2012-2016

