

Belgian Cancer Registry



# Cancer Fact Sheet **Pancreatic Cancer**

ICD10 : C25

**Belgium 2019**

# 1. Cancer Incidence

## 1.1. Number of new diagnoses and incidence rates

**Table 1:** Pancreatic Cancer: Average age at diagnosis, number of new cancer diagnoses (N), crude rate (CR), age-standardised incidence rates (ESR and WSR) and cumulative risk by sex and region, 2019

Males	Age (years)	N	CR	ESR	WSR	CRi
<b>Belgium</b>	<b>68.7</b>	<b>1,041</b>	<b>18.5</b>	<b>13.3</b>	<b>9.1</b>	<b>1.14</b>
Brussels-Capital Region	66.7	76	12.8	13.2	9.2	1.23
Flemish Region	69.6	615	18.9	12.5	8.5	1.06
Walloon Region	67.7	350	19.7	14.8	10.1	1.29

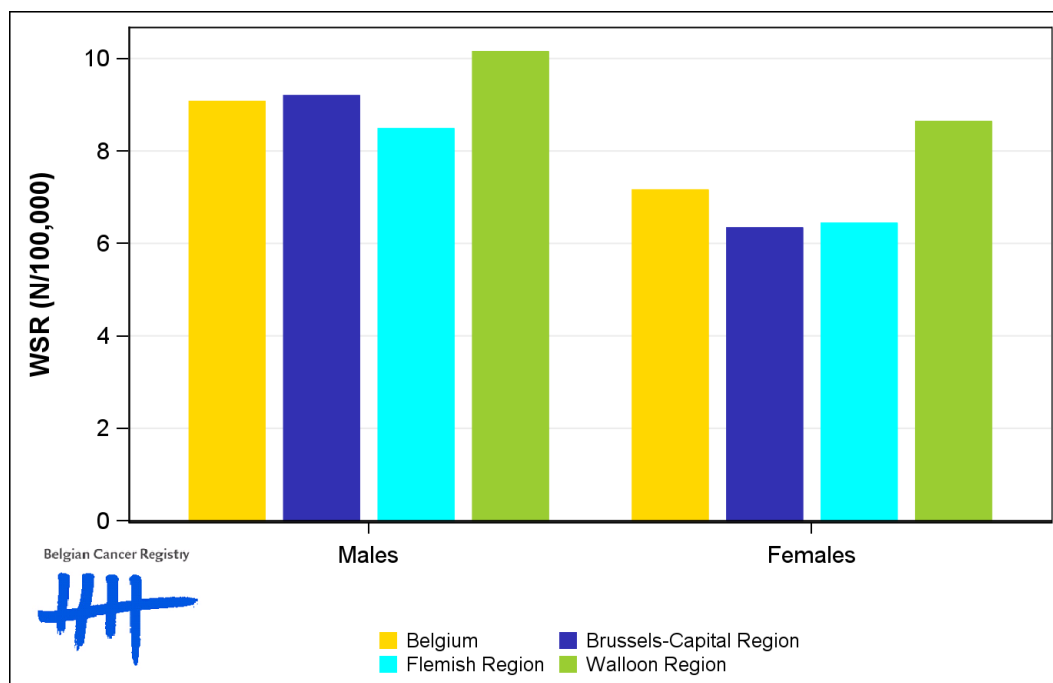
Females	Age (years)	N	CR	ESR	WSR	CRi
<b>Belgium</b>	<b>71.1</b>	<b>987</b>	<b>17.0</b>	<b>10.5</b>	<b>7.2</b>	<b>0.86</b>
Brussels-Capital Region	71.4	72	11.7	9.0	6.3	0.77
Flemish Region	72.1	558	16.8	9.6	6.4	0.77
Walloon Region	69.6	357	19.2	12.4	8.6	1.05

CR=Crude (all ages) Rate (N/100,000 person-years)  
 ESR (1976)=Age-Standardised Rate, using the European Standard Population (N/100,000 person-years)  
 WSR=Age-Standardised Rate, using the World Standard Population (N/100,000 person-years)  
 CRi=Cumulative Risk for 0-74 years (%)

Belgian Cancer Registry



**Figure 1:** Pancreatic Cancer: Age-standardised incidence rates by sex and region, 2019



## 1.2. Age-specific incidence rates

**Table 2:** Pancreatic Cancer: Age-specific incidence rates, crude rate (CR) and age-standardised incidence rates (ESR and WSR) by sex, Belgium 2019

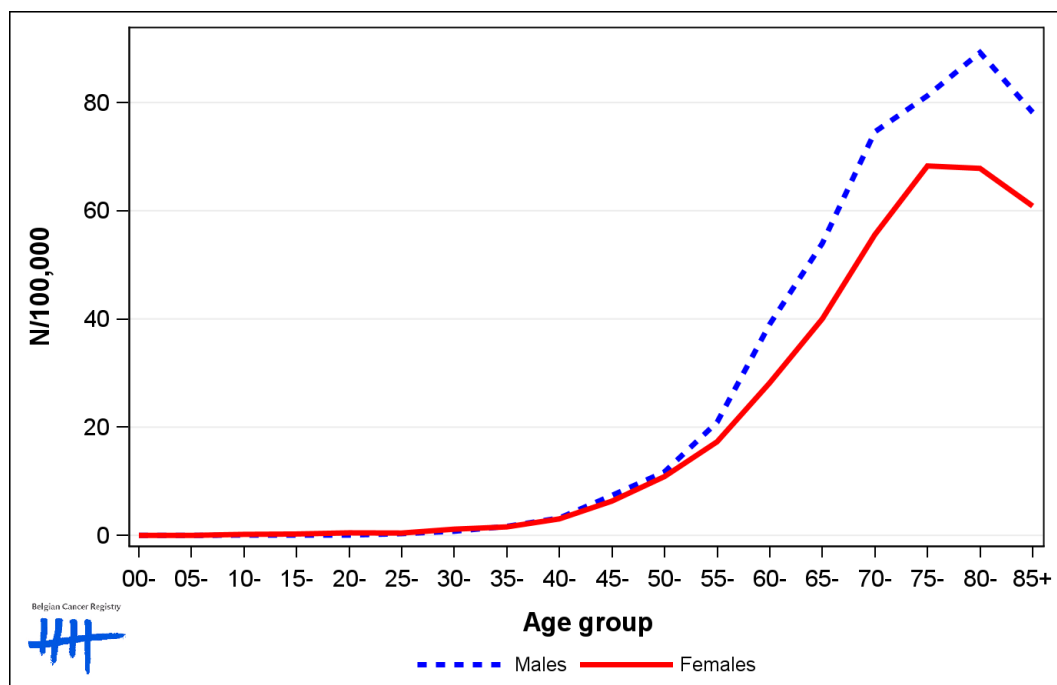
	00-	05-	10-	15-	20-	25-	30-	35-	40-	45-	50-	55-	60-	65-	70-	75-	80-	85+	CR	ESR	WSR
Males	0.0	0.0	0.3	0.0	0.3	0.3	1.4	2.1	3.8	8.9	11.6	22.2	37.7	60.0	81.6	84.7	86.2	67.8	18.5	13.3	9.1
Females	0.0	0.0	0.3	0.7	0.6	0.5	0.5	1.1	2.8	9.1	10.3	14.7	29.4	45.1	57.2	70.9	80.8	55.5	17.0	10.5	7.2

CR=Crude (all ages) Rate (N/100,000 person-years)

ESR (1976)=Age-Standardised Rate, using the European Standard Population (N/100,000 person-years)

WSR=Age-Standardised Rate, using the World Standard Population (N/100,000 person-years)

**Figure 2:** Pancreatic Cancer: Age-specific incidence rates by sex, 2015-2019



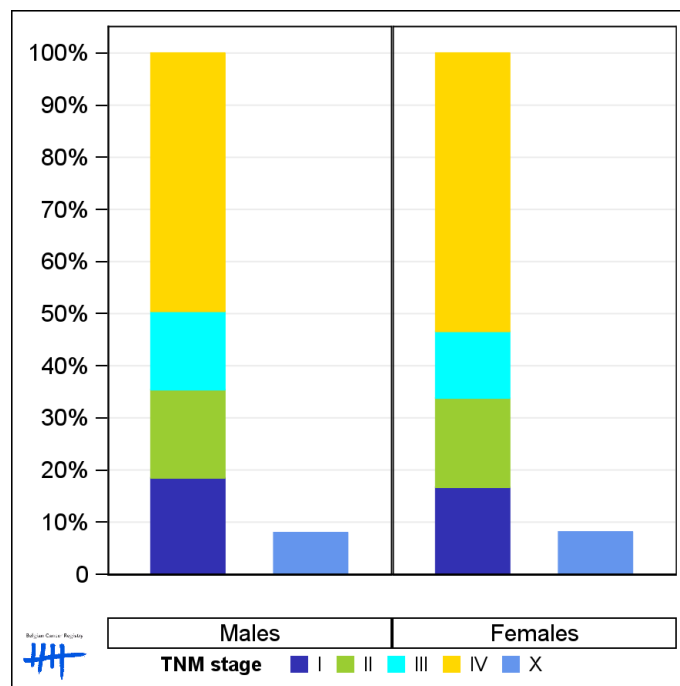
### 1.3. Combined stage

**Table 3:** Pancreatic Cancer: Distribution of combined stage by sex, Belgium 2019

	Stage I	Stage II	Stage III	Stage IV	Stage X	Stage NA	Total
<b>Males</b>							
N	177	162	144	474	83	1	1,041
%	17.0	15.6	13.8	45.5	8.0	<0.1	100
<b>Females</b>							
N	151	155	116	483	80	2	987
%	15.3	15.7	11.8	48.9	8.1	0.2	100

Staging according to the TNM 8th edition (Ref: Brierley JD, Gospodarowicz MK, Wittekind Ch. TNM classification of malignant tumours, UICC 8th edition)  
 Combined TNM stage : compilation of pathological (pTNM) and clinical (cTNM) stage. pTNM prevails over cTNM, except when cTNM stage is IV  
 Stage X: diagnoses with an unknown stage  
 Stage NA: diagnoses with a histological diagnosis where no stage can be evaluated (Not Applicable)

**Figure 3:** Pancreatic Cancer: Bar chart of known combined stage by sex, Belgium 2019



## 1.4. Trends in incidence

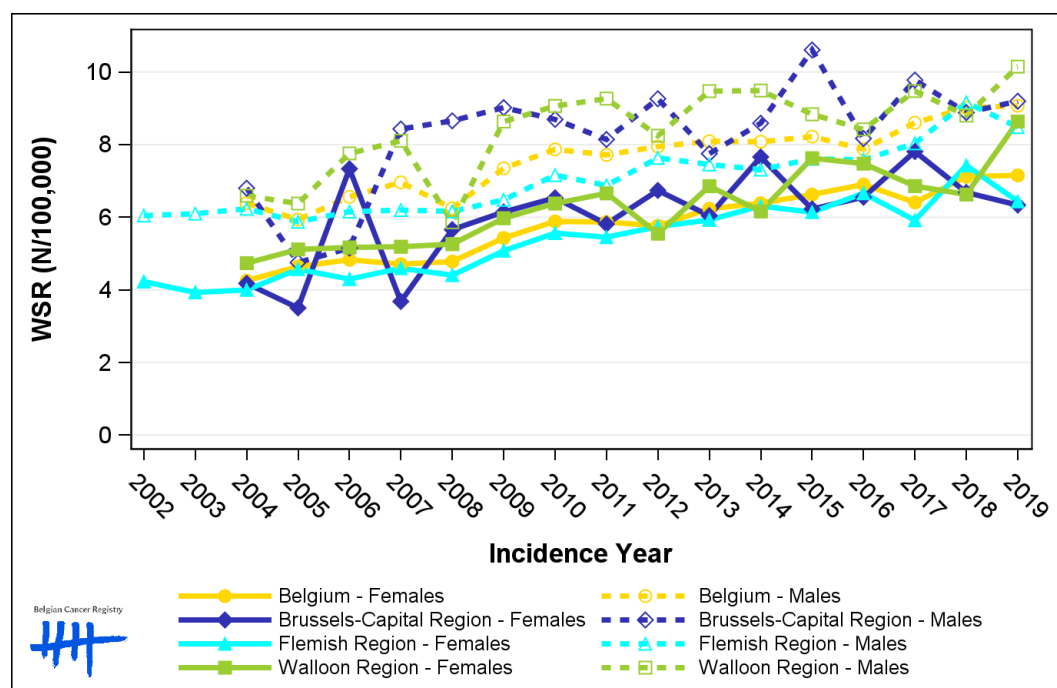
**Table 4:** Pancreatic Cancer: Age-standardised incidence rates (WSR) and average annual percentage change (AAPC) by incidence year, sex and region

Males	2005	2006	2007	2008	2009	2010	2011	2012	2013	2014	2015	2016	2017	2018	2019	AAPC	95% CI
<b>Belgium</b>	5.9	6.6	7.0	6.2	7.3	7.9	7.7	7.9	8.1	8.1	8.2	7.9	8.6	9.0	9.1	2.7	[2.1; 3.3]
Brussels-Capital Region	4.8	5.2	8.4	8.7	9.0	8.7	8.1	9.3	7.8	8.6	10.6	8.2	9.8	8.9	9.2	2.8	[0.6; 5.1]
Flemish Region	5.9	6.2	6.2	6.2	6.5	7.2	6.9	7.6	7.5	7.3	7.6	7.6	8.0	9.2	8.5	2.8	[2.2; 3.3]
Walloon Region	6.4	7.8	8.1	5.9	8.6	9.1	9.3	8.2	9.5	9.5	8.8	8.4	9.5	8.8	10.1	2.3	[0.8; 3.8]

Females	2005	2006	2007	2008	2009	2010	2011	2012	2013	2014	2015	2016	2017	2018	2019	AAPC	95% CI
<b>Belgium</b>	4.6	4.8	4.7	4.8	5.4	5.9	5.9	5.8	6.2	6.4	6.6	6.9	6.4	7.1	7.2	3.2	[2.7; 3.8]
Brussels-Capital Region	3.5	7.3	3.7	5.7	6.1	6.5	5.8	6.7	6.0	7.7	6.2	6.6	7.8	6.7	6.3	3.0	[0.5; 5.6]
Flemish Region	4.6	4.3	4.6	4.4	5.1	5.6	5.5	5.7	5.9	6.3	6.1	6.7	5.9	7.4	6.4	3.5	[2.6; 4.3]
Walloon Region	5.1	5.2	5.2	5.3	6.0	6.4	6.7	5.6	6.9	6.2	7.6	7.5	6.9	6.6	8.6	3.1	[2.0; 4.2]

WSR=Age-Standardised Rate, using the World Standard Population (N/100,000 person-years)  
AAPC = Average Annual Percentage Change over the 2005-2019 period

**Figure 4:** Pancreatic Cancer: Age-standardised incidence rates (WSR) by incidence year, sex and region



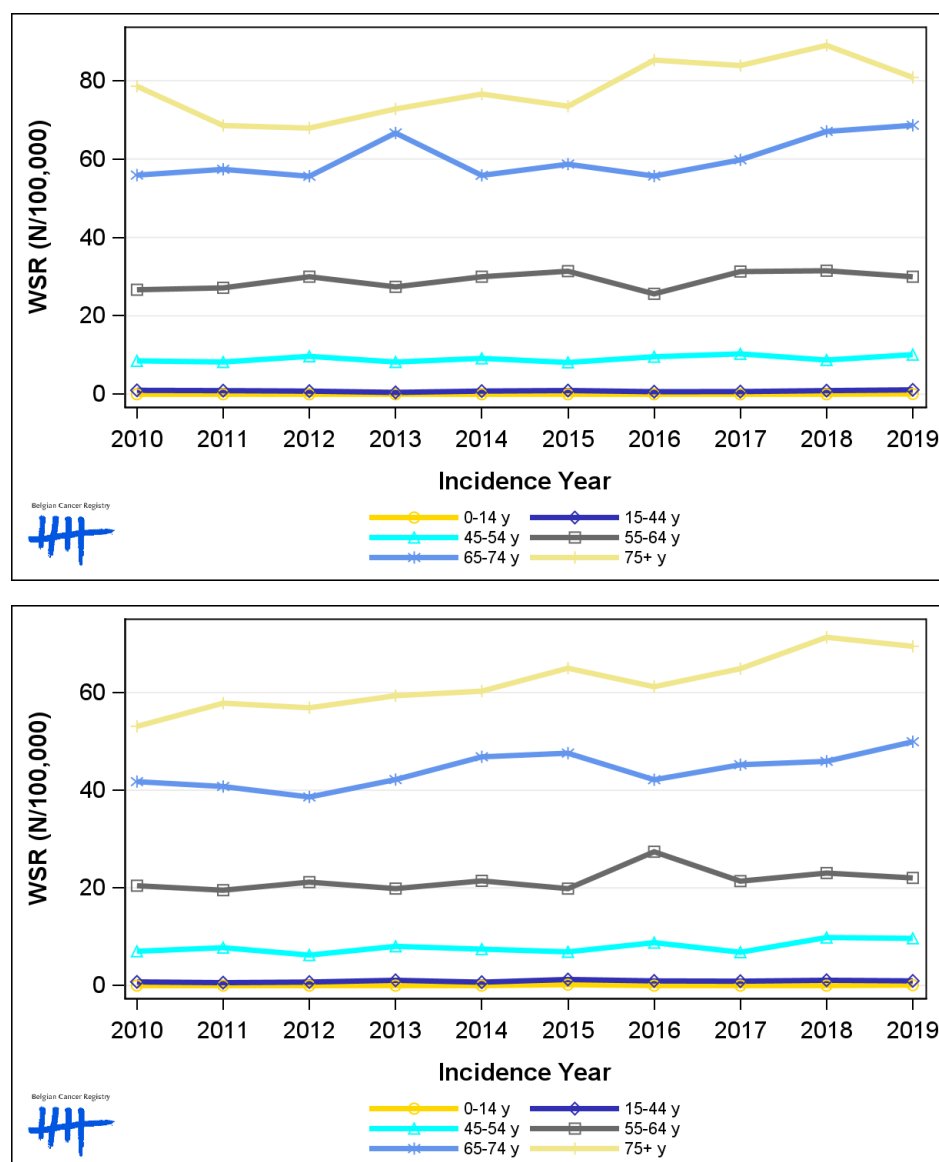
## 1.5. Incidence by broad age groups

**Table 5:** Pancreatic Cancer: Number of new diagnoses and age-standardised incidence rates (WSR) by broad age groups and incidence year by sex, Belgium

	N										WSR									
	2010	2011	2012	2013	2014	2015	2016	2017	2018	2019	2010	2011	2012	2013	2014	2015	2016	2017	2018	2019
<b>Males</b>																				
All ages	788	780	807	857	865	886	894	974	1,045	1,041	7.9	7.7	7.9	8.1	8.1	8.2	7.9	8.6	9.0	9.1
0-14 y	0	0	0	0	0	0	0	0	0	1	0.0	0.0	0.0	0.0	0.0	0.0	0.0	0.0	0.0	<0.1
15-44 y	25	23	21	13	20	25	17	18	24	29	1.0	0.9	0.8	0.5	0.8	1.0	0.7	0.7	0.9	1.1
45-54 y	69	68	81	69	77	68	81	85	72	82	8.5	8.2	9.7	8.2	9.2	8.1	9.6	10.3	8.7	10.1
55-64 y	172	181	198	185	205	216	178	221	227	220	26.7	27.2	30.0	27.4	30.0	31.4	25.6	31.3	31.5	30.0
65-74 y	242	254	252	309	266	286	280	314	366	383	55.9	57.4	55.6	66.7	55.8	58.7	55.7	59.8	67.1	68.6
75+ y	280	254	255	281	297	291	338	336	356	326	78.6	68.6	67.9	72.8	76.6	73.5	85.3	83.9	89.0	80.8
<b>Females</b>																				
All ages	738	758	747	814	842	888	897	890	984	987	5.9	5.9	5.8	6.2	6.4	6.6	6.9	6.4	7.1	7.2
0-14 y	0	0	0	0	0	2	0	0	0	1	0.0	0.0	0.0	0.0	0.0	0.2	0.0	0.0	0.0	<0.1
15-44 y	20	15	19	27	17	31	23	22	28	22	0.8	0.6	0.7	1.1	0.7	1.3	1.0	0.9	1.1	1.0
45-54 y	57	63	51	66	62	58	71	56	81	76	7.0	7.8	6.3	8.0	7.5	6.9	8.8	6.8	9.8	9.7
55-64 y	135	133	145	137	148	141	196	156	169	164	20.5	19.5	21.2	19.9	21.4	19.9	27.4	21.4	23.0	22.0
65-74 y	215	205	198	220	249	257	233	264	276	304	41.8	40.8	38.6	42.2	46.9	47.6	42.2	45.2	45.9	49.9
75+ y	311	342	334	364	366	399	374	392	430	420	53.1	57.8	56.9	59.4	60.3	65.0	61.2	64.9	71.3	69.5

N=Number of invasive tumours  
WSR=Age-Standardised Rate, using the World Standard Population (N/100,000 person-years)

**Figure 5:** Pancreatic Cancer: Age-standardised incidence rates (WSR) versus incidence year by broad age groups for males (top) and females (bottom), Belgium



## 2. Relative survival

**Table 6:** Pancreatic Cancer: 5-year relative survival proportion by sex, age group and region, Belgium 2015-2019

	5-year relative survival 2015-2019 (%)					
	Males			Females		
	N at risk	estimate	95% CI	N at risk	estimate	95% CI
<b>Overall</b>	4,816	12.4	[11.2, 13.8]	4,627	12.8	[11.6, 14.0]
<b>Age group</b>						
15-59 years	900	22.0	[18.8, 25.4]	795	28.8	[25.1, 32.7]
60-74 years	2,275	12.7	[10.9, 14.7]	1,819	13.4	[11.5, 15.5]
75+ years	1,641	6.6	[4.8, 8.7]	2,013	5.7	[4.4, 7.2]
<b>Region</b>						
Brussels-Capital Region	373	10.5	[7.1, 14.7]	378	11.1	[7.6, 15.3]
Flemish Region	2,883	13.6	[11.9, 15.4]	2,670	13.9	[12.3, 15.6]
Walloon Region	1,560	10.8	[8.7, 13.2]	1,579	11.3	[9.4, 13.5]

**Figure 6:** Pancreatic Cancer: relative survival proportion by sex, Belgium 2015-2019

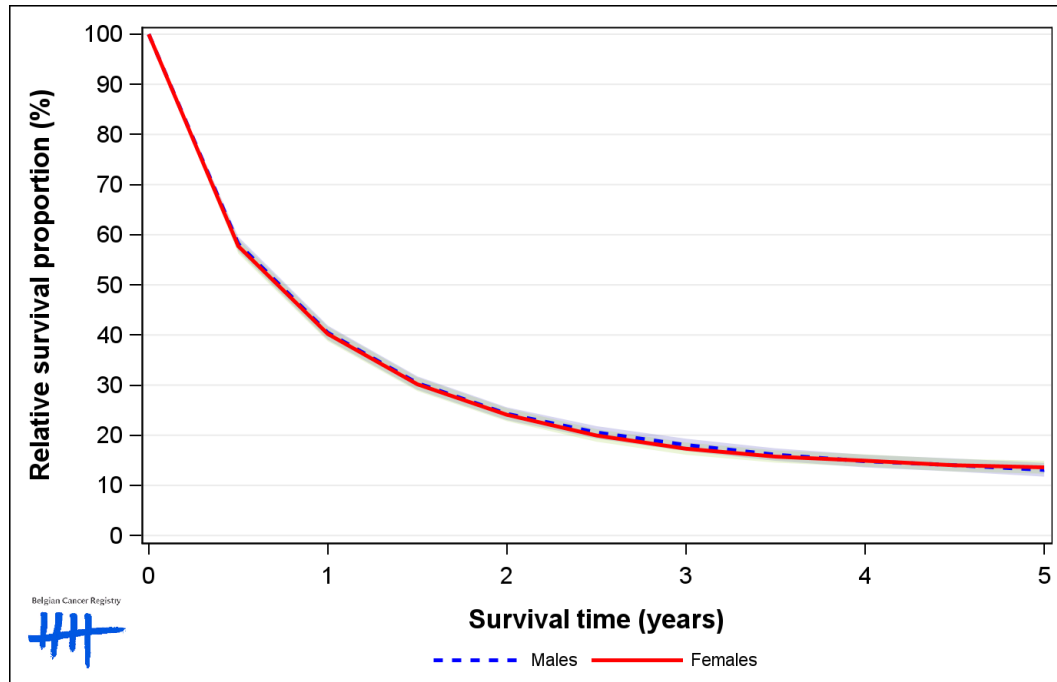


Figure 7: Pancreatic Cancer: relative survival proportion by age group in males, Belgium 2015-2019

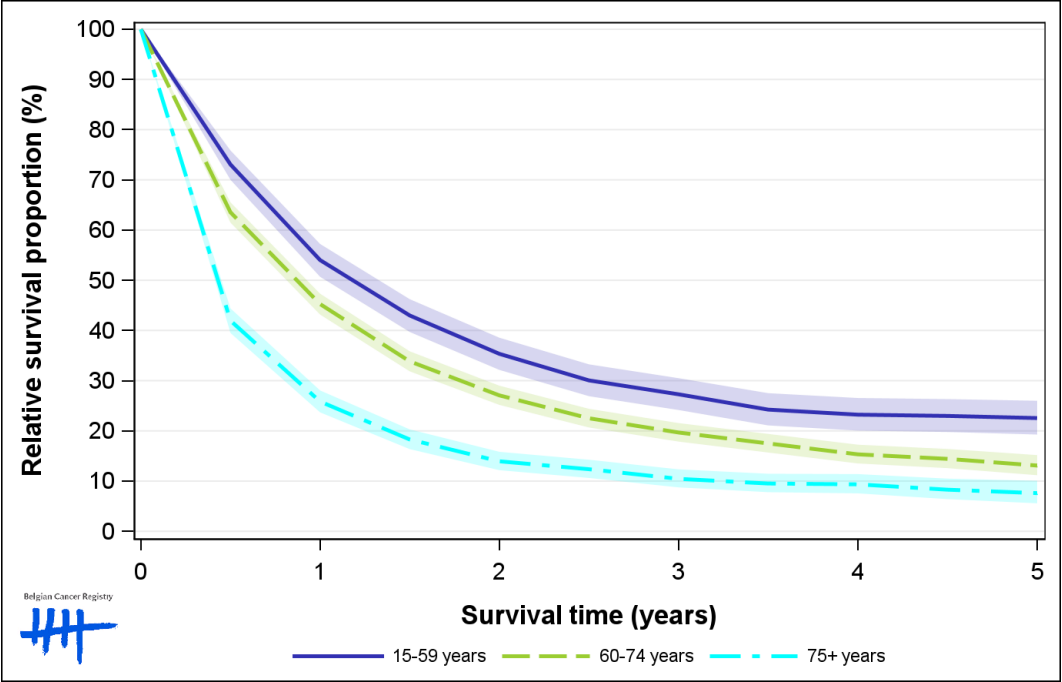
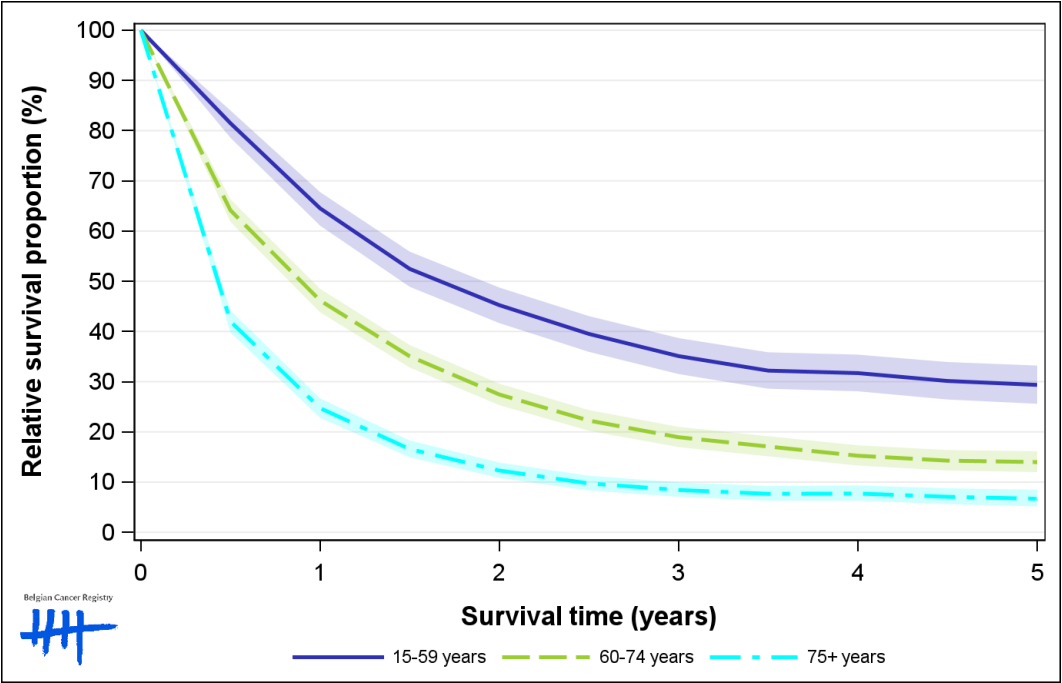
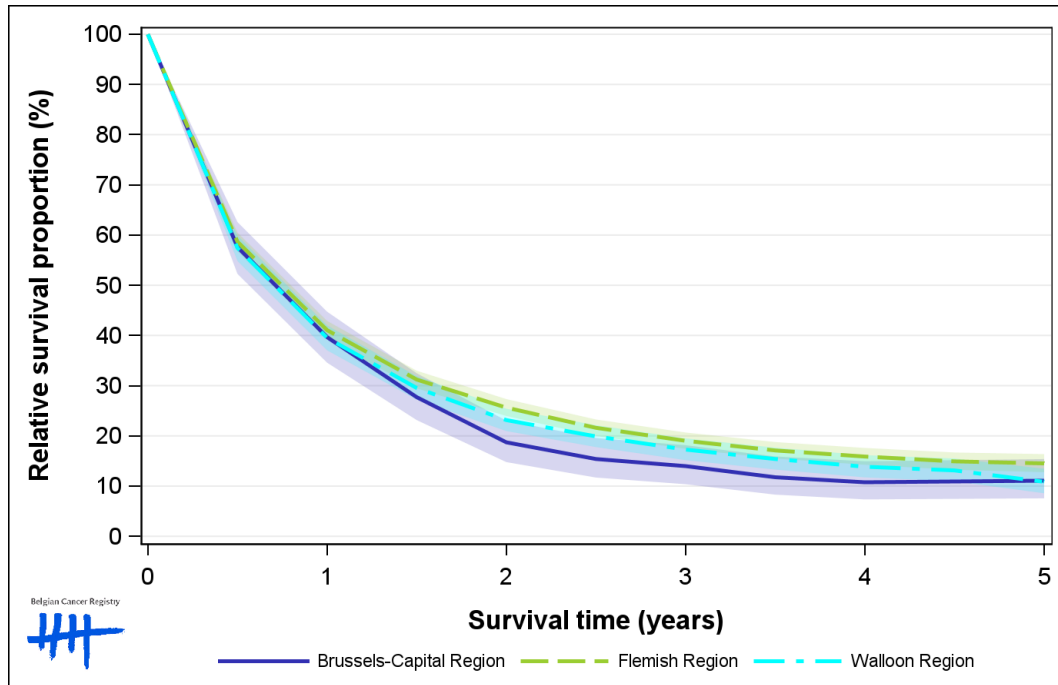


Figure 8: Pancreatic Cancer: relative survival proportion by age group in females, Belgium 2015-2019





**Figure 9:** Pancreatic Cancer: relative survival proportion by region in males, Belgium 2015-2019



**Figure 10:** Pancreatic Cancer: relative survival proportion by region in females, Belgium 2015-2019

