

Belgian Cancer Registry



Cancer Fact Sheet **Oesophagus Cancer**

ICD10 : C15-16.0

Belgium 2019

1. Cancer Incidence

1.1. Number of new diagnoses and incidence rates

Table 1: Oesophageal cancer: Average age at diagnosis, number of new cancer diagnoses (N), crude rate (CR), age-standardised incidence rates (ESR and WSR) and cumulative risk by sex and region, 2019

Males	Age (years)	N	CR	ESR	WSR	CRi
Belgium	68.3	1,212	21.5	15.6	10.7	1.34
Brussels-Capital Region	68.0	68	11.5	11.8	8.0	1.07
Flemish Region	68.7	743	22.8	15.5	10.6	1.31
Walloon Region	67.8	401	22.6	16.8	11.6	1.47

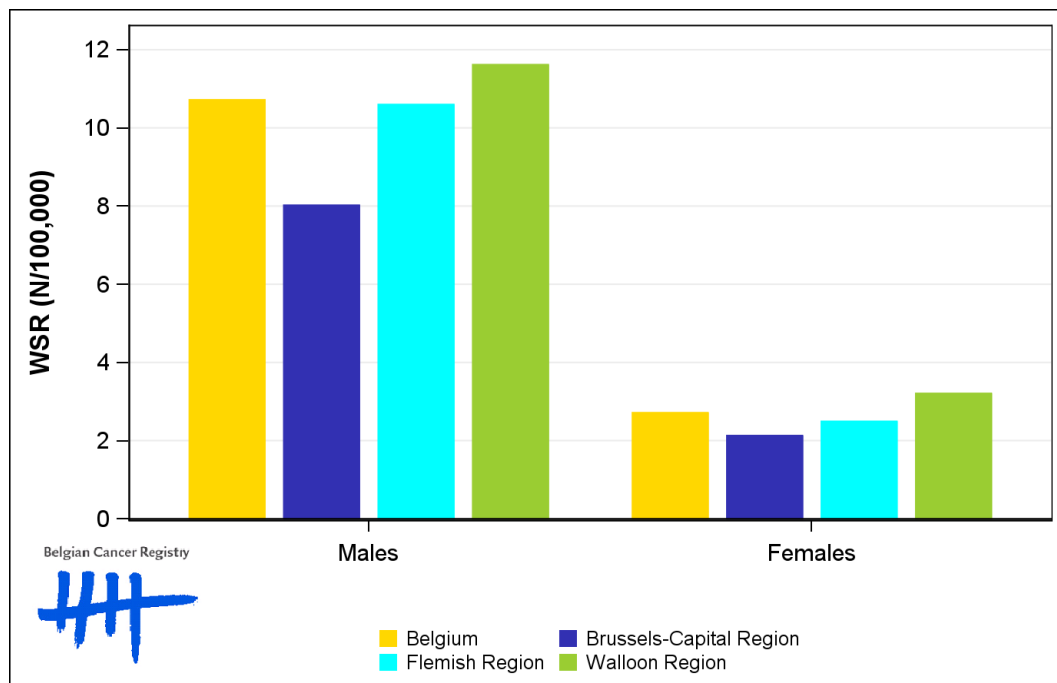
Females	Age (years)	N	CR	ESR	WSR	CRi
Belgium	72.0	391	6.7	4.1	2.7	0.31
Brussels-Capital Region	65.7	22	3.6	3.1	2.1	0.26
Flemish Region	73.5	232	7.0	3.8	2.5	0.28
Walloon Region	70.3	137	7.4	4.7	3.2	0.38

CR=Crude (all ages) Rate (N/100,000 person-years)
 ESR (1976)=Age-Standardised Rate, using the European Standard Population (N/100,000 person-years)
 WSR=Age-Standardised Rate, using the World Standard Population (N/100,000 person-years)
 CRi=Cumulative Risk for 0-74 years (%)

Belgian Cancer Registry



Figure 1: Oesophageal cancer: Age-standardised incidence rates by sex and region, 2019



1.2. Age-specific incidence rates

Table 2: Oesophageal cancer: Age-specific incidence rates, crude rate (CR) and age-standardised incidence rates (ESR and WSR) by sex, Belgium 2019

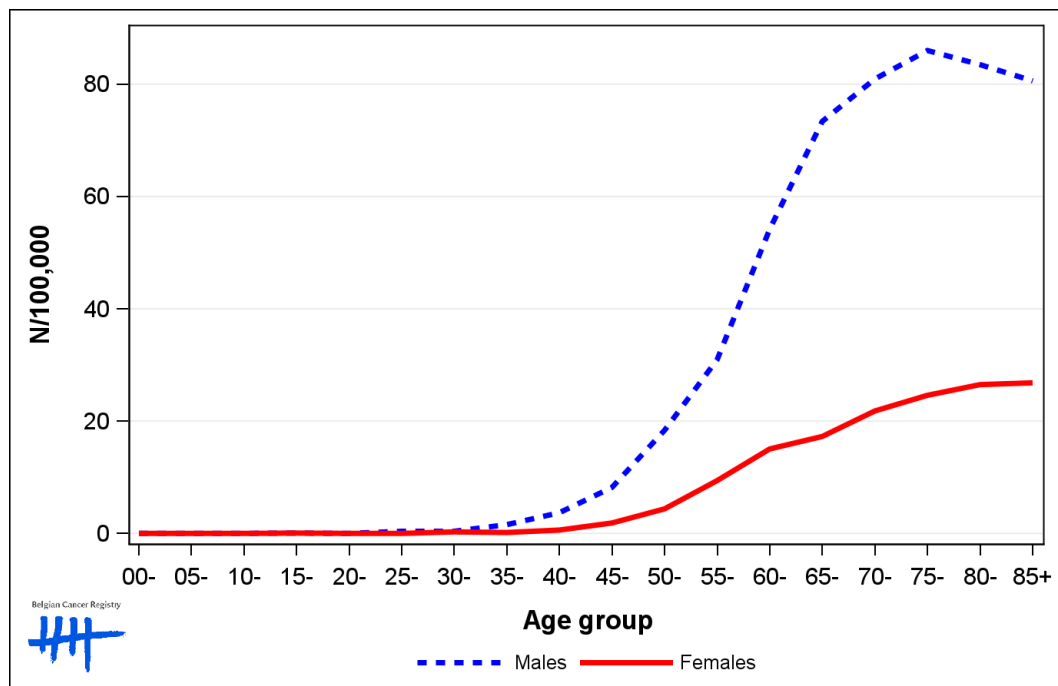
	00-	05-	10-	15-	20-	25-	30-	35-	40-	45-	50-	55-	60-	65-	70-	75-	80-	85+	CR	ESR	WSR
Males	0.0	0.0	0.0	0.3	0.0	0.5	0.5	1.3	5.7	7.9	15.8	28.6	54.3	74.0	81.6	88.9	97.6	77.1	21.5	15.6	10.7
Females	0.0	0.0	0.0	0.0	0.0	0.0	0.3	0.3	0.8	1.8	4.8	7.6	14.7	12.6	19.5	35.9	23.9	28.6	6.7	4.1	2.7

CR=Crude (all ages) Rate (N/100,000 person-years)

ESR (1976)=Age-Standardised Rate, using the European Standard Population (N/100,000 person-years)

WSR=Age-Standardised Rate, using the World Standard Population (N/100,000 person-years)

Figure 2: Oesophageal cancer: Age-specific incidence rates by sex, 2015-2019



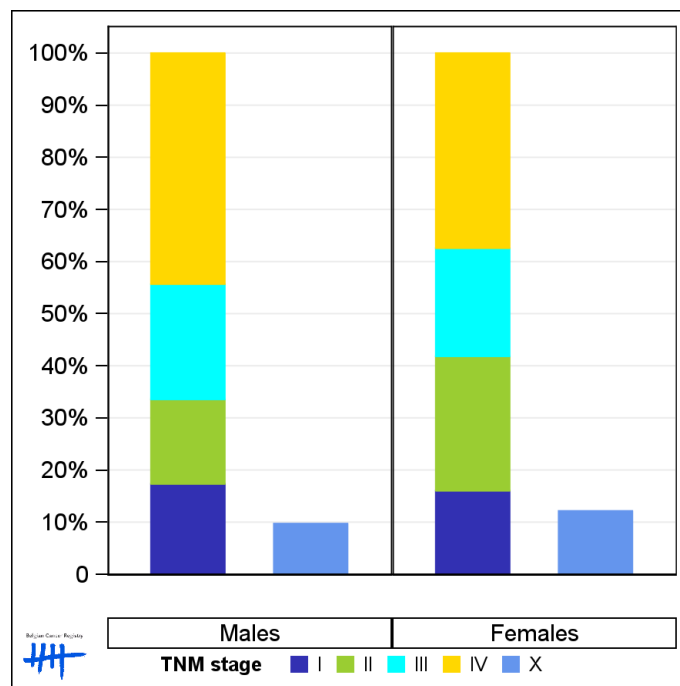
1.3. Combined stage

Table 3: Oesophageal cancer: Distribution of combined stage by sex, Belgium 2019

	Stage I	Stage II	Stage III	Stage IV	Stage X	Stage NA	Total
Males							
N	182	170	232	465	113	50	1,212
%	15.0	14.0	19.1	38.4	9.3	4.1	100
Females							
N	51	82	66	119	44	29	391
%	13.0	21.0	16.9	30.4	11.3	7.4	100

Staging according to the TNM 8th edition (Ref: Brierley JD, Gospodarowicz MK, Wittekind Ch. TNM classification of malignant tumours, UICC 8th edition)
 Combined TNM stage : compilation of pathological (pTNM) and clinical (cTNM) stage. pTNM prevails over cTNM, except when cTNM stage is IV
 Stage X: diagnoses with an unknown stage
 Stage NA: diagnoses with a histological diagnosis where no stage can be evaluated (Not Applicable)

Figure 3: Oesophageal cancer: Bar chart of known combined stage by sex, Belgium 2019



1.4. Trends in incidence

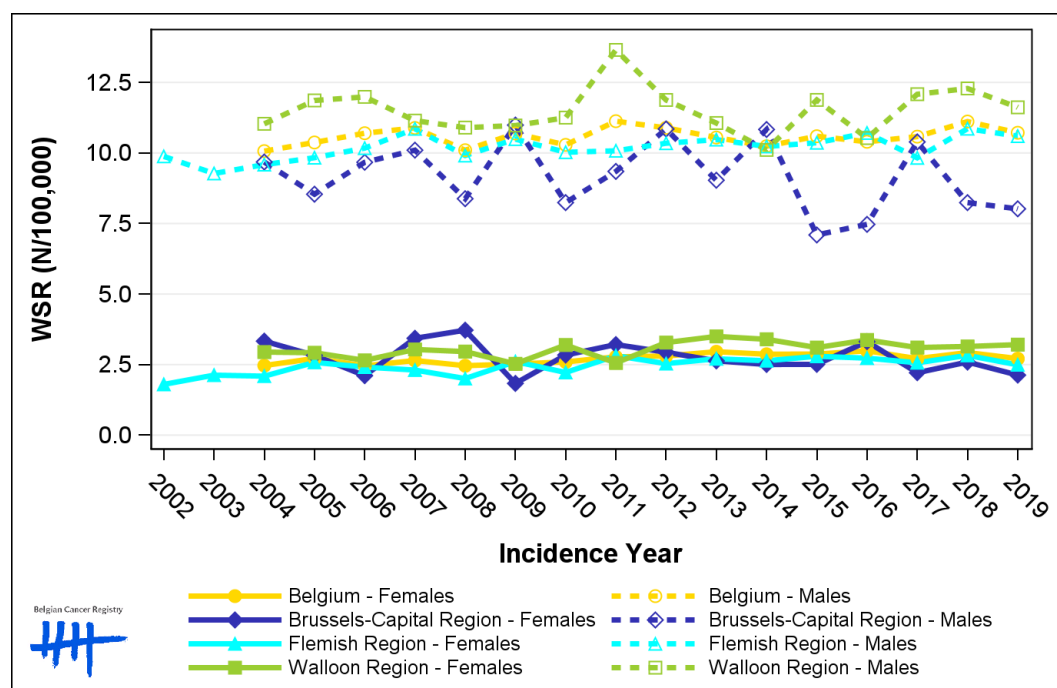
Table 4: Oesophageal cancer: Age-standardised incidence rates (WSR) and average annual percentage change (AAPC) by incidence year, sex and region

Males	2005	2006	2007	2008	2009	2010	2011	2012	2013	2014	2015	2016	2017	2018	2019	AAPC	95% CI
Belgium	10.4	10.7	10.9	10.1	10.7	10.3	11.1	10.9	10.5	10.2	10.6	10.4	10.6	11.1	10.7	0.1	[-0.3; 0.5]
Brussels-Capital Region	8.5	9.7	10.1	8.4	11.0	8.2	9.3	10.9	9.0	10.8	7.1	7.5	10.4	8.2	8.0	-0.9	[-2.7; 0.9]
Flemish Region	9.8	10.2	10.9	9.9	10.5	10.0	10.1	10.3	10.5	10.2	10.4	10.7	9.8	10.9	10.6	0.3	[-0.1; 0.7]
Walloon Region	11.9	12.0	11.1	10.9	11.0	11.3	13.7	11.9	11.1	10.1	11.9	10.5	12.1	12.3	11.6	0.0	[-0.9; 1.0]

Females	2005	2006	2007	2008	2009	2010	2011	2012	2013	2014	2015	2016	2017	2018	2019	AAPC	95% CI
Belgium	2.7	2.5	2.6	2.5	2.5	2.6	2.8	2.8	3.0	2.9	2.9	3.0	2.7	2.9	2.7	0.3	[-0.3; 0.9]
Brussels-Capital Region	2.8	2.1	3.4	3.7	1.8	2.8	3.2	2.9	2.6	2.5	2.5	3.3	2.2	2.6	2.1	-1.0	[-3.6; 1.6]
Flemish Region	2.6	2.4	2.3	2.0	2.6	2.2	2.8	2.5	2.7	2.6	2.8	2.7	2.6	2.8	2.5	1.1	[-0.0; 2.2]
Walloon Region	2.9	2.7	3.0	3.0	2.5	3.2	2.6	3.3	3.5	3.4	3.1	3.4	3.1	3.1	3.2	1.2	[0.1; 2.4]

WSR=Age-Standardised Rate, using the World Standard Population (N/100,000 person-years)
 AAPC = Average Annual Percentage Change over the 2005-2019 period

Figure 4: Oesophageal cancer: Age-standardised incidence rates (WSR) by incidence year, sex and region



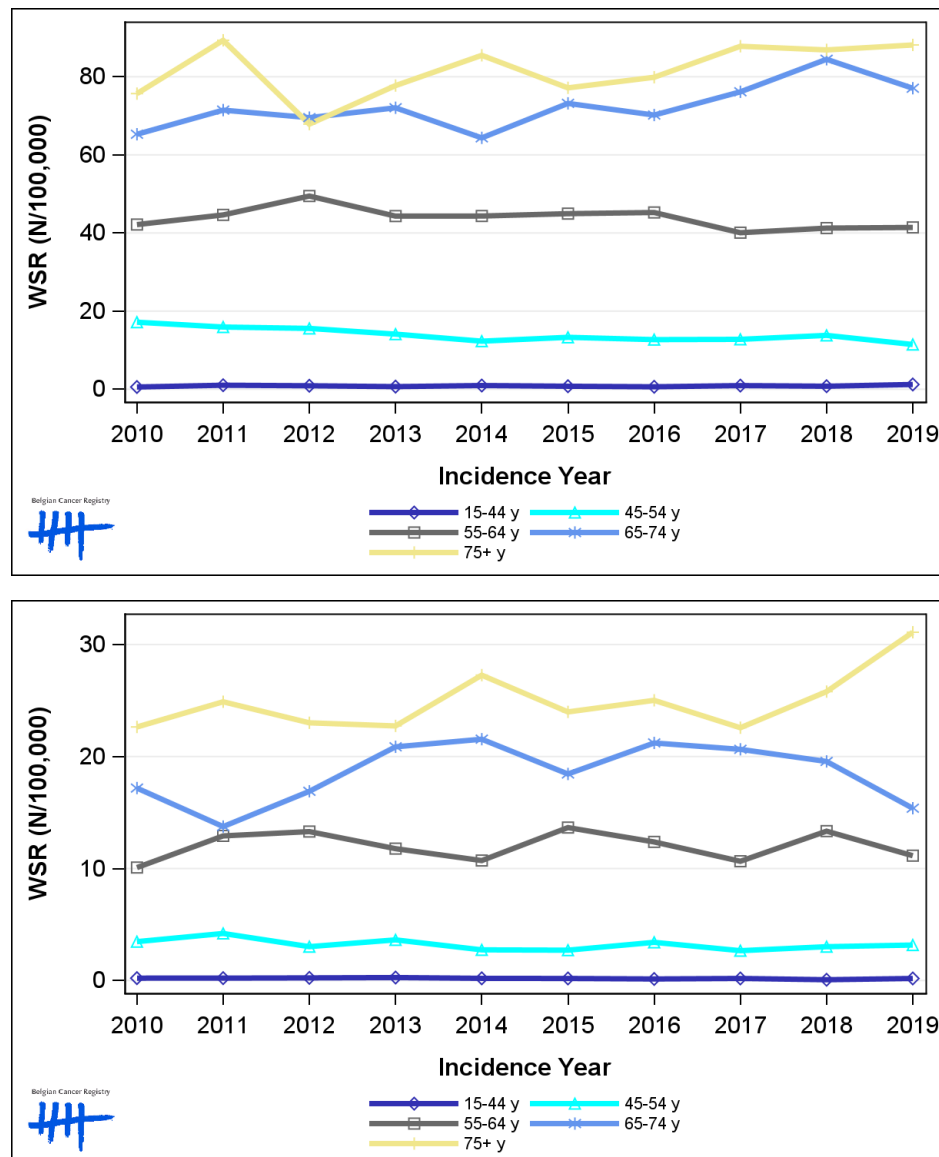
1.5. Incidence by broad age groups

Table 5: Oesophageal cancer: Number of new diagnoses and age-standardised incidence rates (WSR) by broad age groups and incidence year by sex, Belgium

	N											WSR									
	2010	2011	2012	2013	2014	2015	2016	2017	2018	2019	2010	2011	2012	2013	2014	2015	2016	2017	2018	2019	
Males																					
All ages	986	1,087	1,049	1,068	1,067	1,099	1,112	1,155	1,234	1,212	10.3	11.1	10.9	10.5	10.2	10.6	10.4	10.6	11.1	10.7	
0-14 y	0	0	0	0	0	0	0	0	0	0	0.0	0.0	0.0	0.0	0.0	0.0	0.0	0.0	0.0	0.0	
15-44 y	16	29	25	18	25	21	17	24	20	31	0.6	1.0	0.9	0.7	1.0	0.8	0.6	0.9	0.8	1.2	
45-54 y	141	133	130	119	105	111	109	108	117	95	17.2	15.9	15.6	14.1	12.3	13.3	12.7	12.8	13.8	11.5	
55-64 y	274	298	330	300	302	310	317	284	297	303	42.2	44.6	49.5	44.3	44.4	45.0	45.3	40.1	41.3	41.4	
65-74 y	285	309	312	334	305	356	352	397	456	425	65.3	71.5	69.5	72.1	64.4	73.2	70.2	76.2	84.5	77.1	
75+ y	270	318	252	297	330	301	317	342	344	358	75.7	89.3	67.9	77.7	85.5	77.2	79.9	87.8	86.9	88.1	
Females																					
All ages	322	348	359	370	386	376	395	367	404	391	2.6	2.8	2.8	3.0	2.9	2.9	3.0	2.7	2.9	2.7	
0-14 y	0	0	0	0	0	0	0	0	0	0	0.0	0.0	0.0	0.0	0.0	0.0	0.0	0.0	0.0	0.0	
15-44 y	6	6	6	7	5	5	3	5	2	5	0.2	0.2	0.2	0.3	0.2	0.2	0.1	0.2	<0.1	0.2	
45-54 y	28	35	25	30	23	23	28	22	25	26	3.5	4.2	3.0	3.6	2.7	2.7	3.4	2.7	3.0	3.2	
55-64 y	67	88	92	81	74	96	89	78	98	83	10.1	12.9	13.3	11.8	10.7	13.7	12.4	10.7	13.3	11.1	
65-74 y	85	67	85	107	114	99	116	120	118	95	17.2	13.7	16.9	20.9	21.5	18.4	21.2	20.6	19.6	15.4	
75+ y	136	152	151	145	170	153	159	142	161	182	22.6	24.9	23.0	22.7	27.3	24.0	25.0	22.6	25.8	31.1	

N=Number of invasive tumours
WSR=Age-Standardised Rate, using the World Standard Population (N/100,000 person-years)

Figure 5: Oesophageal cancer: Age-standardised incidence rates (WSR) versus incidence year by broad age groups for males (top) and females (bottom), Belgium



2. Relative survival

Table 6: Oesophageal cancer: 5-year relative survival proportion by sex, age group and region, Belgium 2015-2019

	5-year relative survival 2015-2019 (%)					
	Males			Females		
	N at risk	estimate	95% CI	N at risk	estimate	95% CI
Overall	5,775	26.3	[24.8, 27.9]	1,919	24.4	[21.8, 27.1]
Age group						
15-59 years	1,239	32.6	[29.4, 35.8]	323	34.7	[28.4, 41.2]
60-74 years	2,883	28.1	[25.9, 30.3]	807	28.2	[24.2, 32.4]
75+ years	1,653	17.6	[14.8, 20.8]	789	15.1	[11.4, 19.4]
Region						
Brussels-Capital Region	328	23.7	[17.6, 30.5]	138	22.4	[13.3, 33.2]
Flemish Region	3,533	26.2	[24.3, 28.2]	1,118	25.4	[22.0, 28.8]
Walloon Region	1,914	26.9	[24.1, 29.8]	663	23.0	[18.6, 27.7]

Figure 6: Oesophageal cancer: relative survival proportion by sex, Belgium 2015-2019

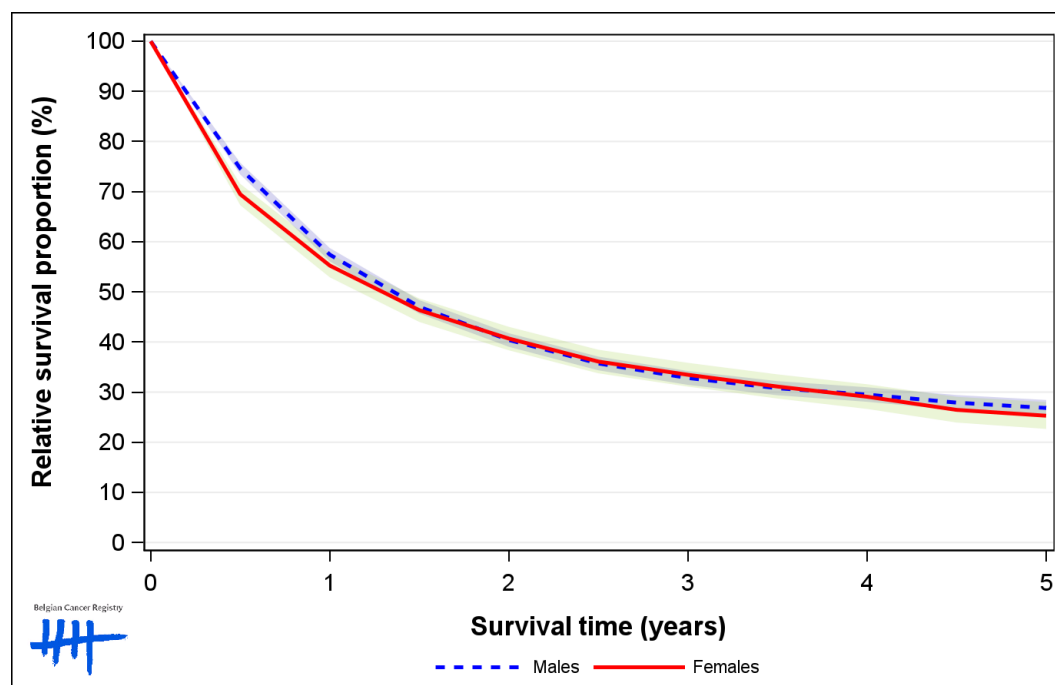


Figure 7: Oesophageal cancer: relative survival proportion by age group in males, Belgium 2015-2019

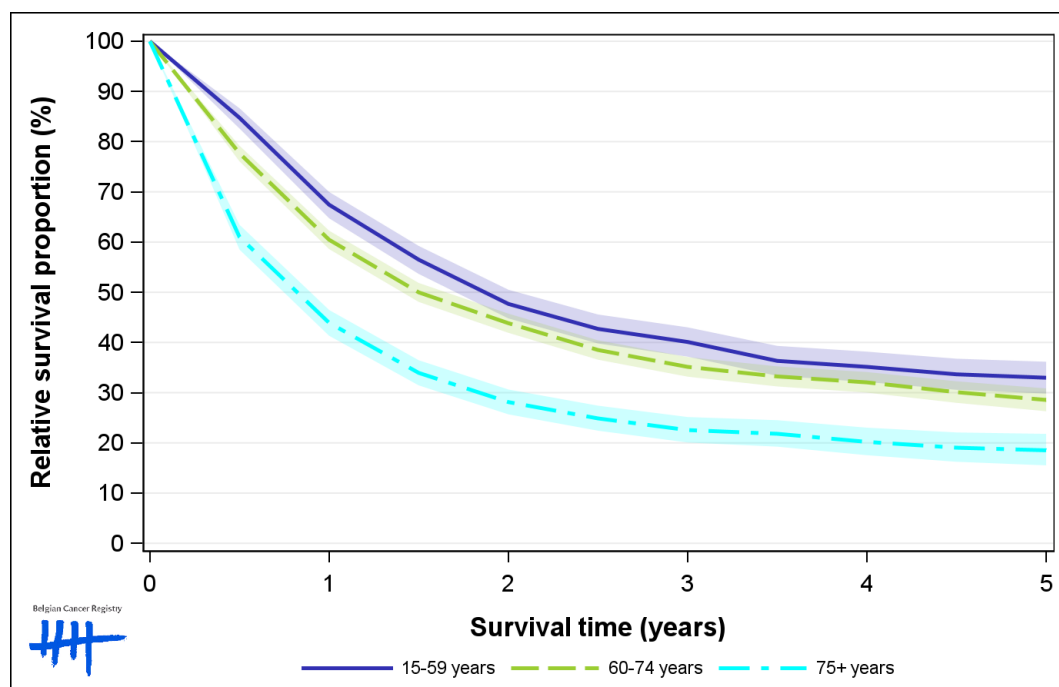


Figure 8: Oesophageal cancer: relative survival proportion by age group in females, Belgium 2015-2019

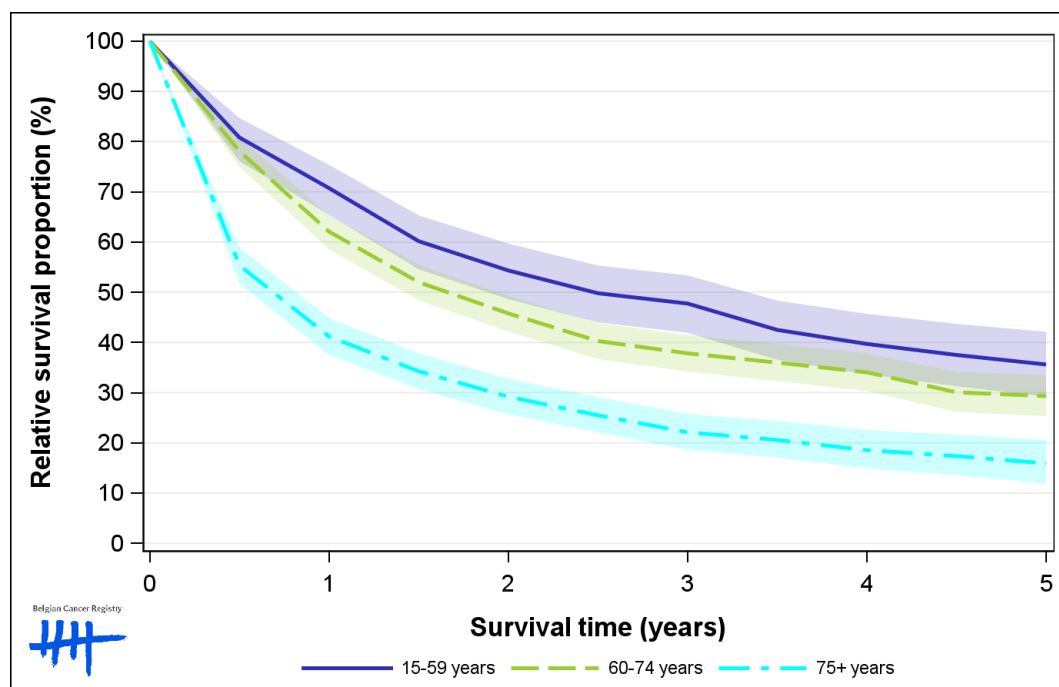


Figure 9: Oesophageal cancer: relative survival proportion by region in males, Belgium 2015-2019

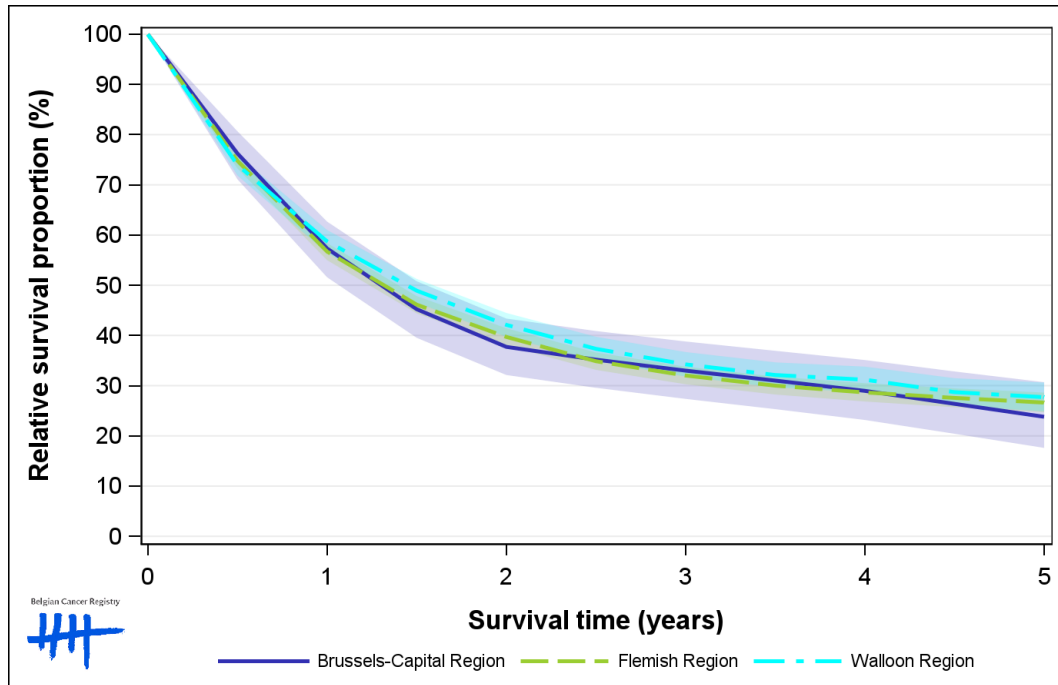


Figure 10: Oesophageal cancer: relative survival proportion by region in females, Belgium 2015-2019

