

Belgian Cancer Registry



Cancer Fact Sheet **Mesothelioma**

ICD10 : C45

Belgium 2019

1. Cancer Incidence

1.1. Number of new diagnoses and incidence rates

Table 1: Mesothelioma: Average age at diagnosis, number of new cancer diagnoses (N), crude rate (CR), age-standardised incidence rates (ESR and WSR) and cumulative risk by sex and region, 2019

Males	Age (years)	N	CR	ESR	WSR	CRi
Belgium	73.6	235	4.2	2.7	1.7	0.22
Brussels-Capital Region	70.1	8	1.4	1.3	0.9	0.12
Flemish Region	73.5	154	4.7	2.9	1.8	0.23
Walloon Region	74.1	73	4.1	2.8	1.8	0.21

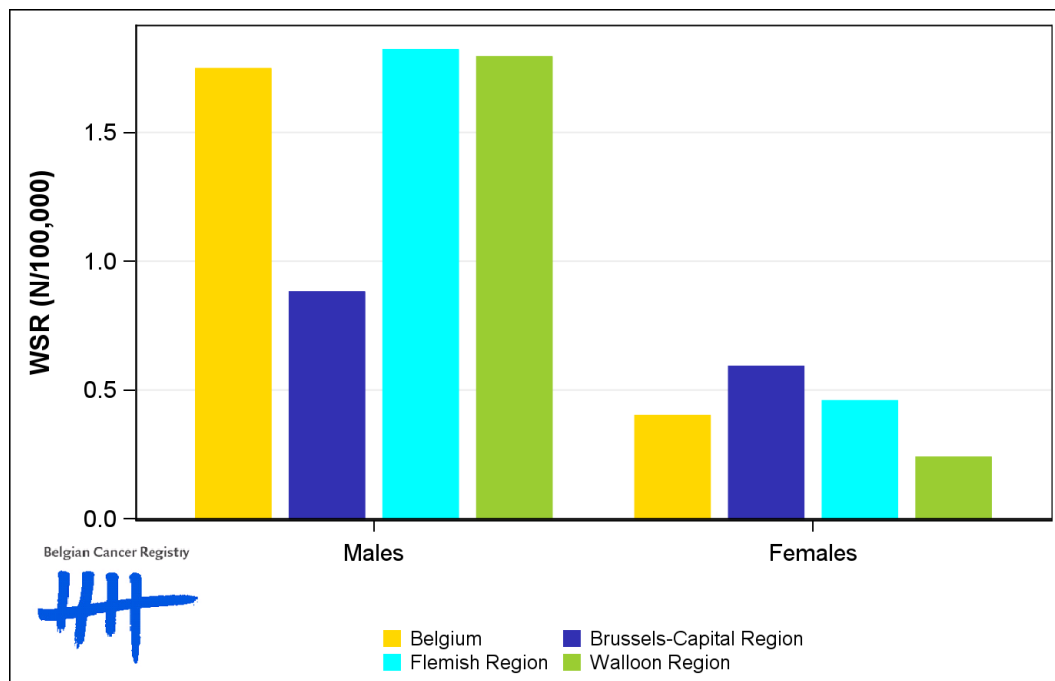
Females	Age (years)	N	CR	ESR	WSR	CRi
Belgium	70.0	53	0.9	0.6	0.4	<0.1
Brussels-Capital Region	62.0	5	0.8	0.8	0.6	<0.1
Flemish Region	70.5	37	1.1	0.7	0.5	<0.1
Walloon Region	71.9	11	0.6	0.4	0.2	<0.1

CR=Crude (all ages) Rate (N/100,000 person-years)
 ESR (1976)=Age-Standardised Rate, using the European Standard Population (N/100,000 person-years)
 WSR=Age-Standardised Rate, using the World Standard Population (N/100,000 person-years)
 CRi=Cumulative Risk for 0-74 years (%)

Belgian Cancer Registry



Figure 1: Mesothelioma: Age-standardised incidence rates by sex and region, 2019



1.2. Age-specific incidence rates

Table 2: Mesothelioma: Age-specific incidence rates, crude rate (CR) and age-standardised incidence rates (ESR and WSR) by sex, Belgium 2019

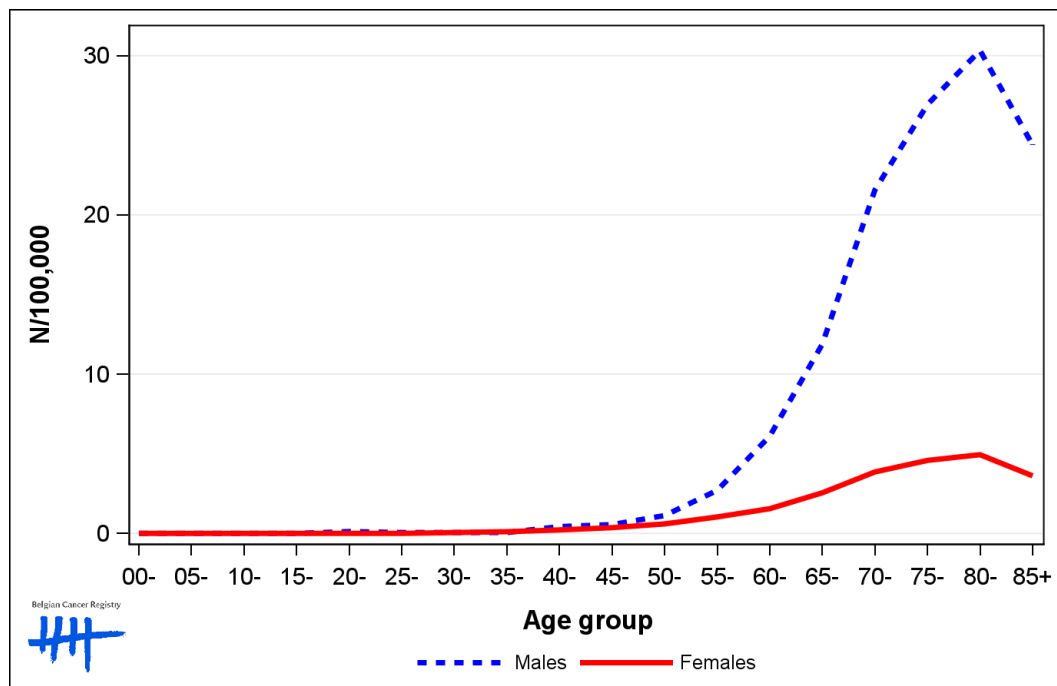
	00-	05-	10-	15-	20-	25-	30-	35-	40-	45-	50-	55-	60-	65-	70-	75-	80-	85+	CR	ESR	WSR
Males	0.0	0.0	0.0	0.0	0.3	0.0	0.0	0.0	0.5	0.3	1.0	1.8	5.1	13.1	21.2	25.4	32.8	23.2	4.2	2.7	1.7
Females	0.0	0.0	0.0	0.0	0.0	0.0	0.0	0.3	0.3	0.3	0.5	1.0	1.4	1.9	5.7	3.9	2.1	2.3	0.9	0.6	0.4

CR=Crude (all ages) Rate (N/100,000 person-years)

ESR (1976)=Age-Standardised Rate, using the European Standard Population (N/100,000 person-years)

WSR=Age-Standardised Rate, using the World Standard Population (N/100,000 person-years)

Figure 2: Mesothelioma: Age-specific incidence rates by sex, 2015-2019



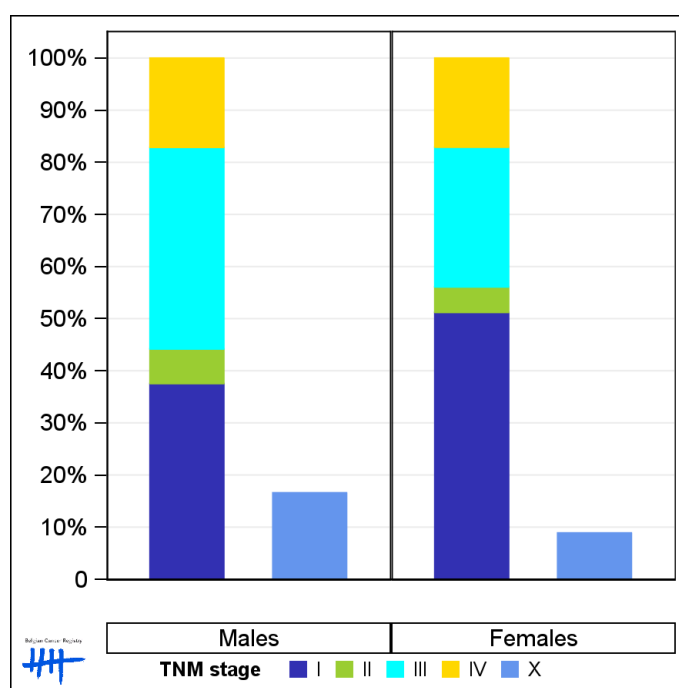
1.3. Combined stage

Table 3: Mesothelioma: Distribution of combined stage by sex, Belgium 2019

	Stage I	Stage II	Stage III	Stage IV	Stage X	Stage NA	Total
Males							
N	68	12	70	31	36	18	235
%	28.9	5.1	29.8	13.2	15.3	7.7	100
Females							
N	21	2	11	7	4	8	53
%	39.6	3.8	20.8	13.2	7.5	15.1	100

Staging according to the TNM 8th edition (Ref: Brierley JD, Gospodarowicz MK, Wittekind Ch. TNM classification of malignant tumours, UICC 8th edition)
 Combined TNM stage : compilation of pathological (pTNM) and clinical (cTNM) stage. pTNM prevails over cTNM, except when cTNM stage is IV
 Stage X: diagnoses with an unknown stage
 Stage NA: diagnoses with a histological diagnosis where no stage can be evaluated (Not Applicable)

Figure 3: Mesothelioma: Bar chart of known combined stage by sex, Belgium 2019



1.4. Trends in incidence

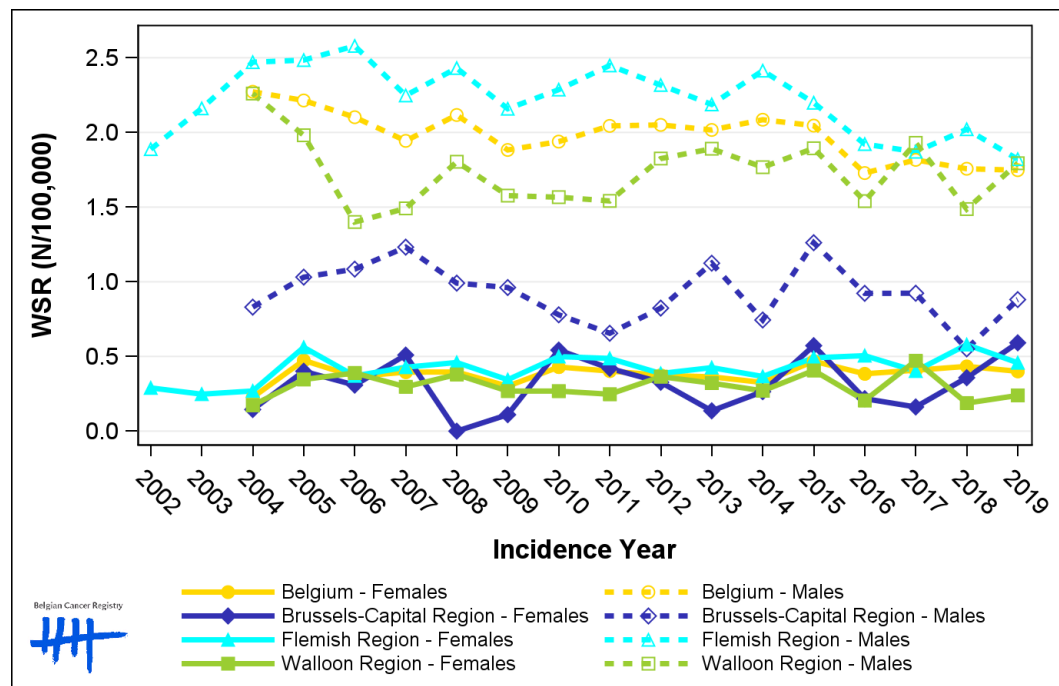
Table 4: Mesothelioma: Age-standardised incidence rates (WSR) and average annual percentage change (AAPC) by incidence year, sex and region

Males	2005	2006	2007	2008	2009	2010	2011	2012	2013	2014	2015	2016	2017	2018	2019	AAPC	95% CI
Belgium	2.2	2.1	1.9	2.1	1.9	1.9	2.0	2.1	2.0	2.1	2.0	1.7	1.8	1.8	1.7	-1.5	[-2.2; -0.8]
Brussels-Capital Region	1.0	1.1	1.2	1.0	1.0	0.8	0.7	0.8	1.1	0.7	1.3	0.9	0.9	0.6	0.9	-2.0	[-4.7; 0.8]
Flemish Region	2.5	2.6	2.2	2.4	2.2	2.3	2.4	2.3	2.2	2.4	2.2	1.9	1.9	2.0	1.8	-2.1	[-2.9; -1.3]
Walloon Region	2.0	1.4	1.5	1.8	1.6	1.6	1.5	1.8	1.9	1.8	1.9	1.5	1.9	1.5	1.8	0.5	[-1.0; 2.0]

Females	2005	2006	2007	2008	2009	2010	2011	2012	2013	2014	2015	2016	2017	2018	2019	AAPC	95% CI
Belgium	0.5	0.4	0.4	0.4	0.3	0.4	0.4	0.4	0.4	0.3	0.5	0.4	0.4	0.4	0.4	0.2	[-1.4; 1.8]
Brussels-Capital Region	0.4	0.3	0.5	0.0	0.1	0.5	0.4	0.3	0.1	0.3	0.6	0.2	0.2	0.4	0.6	0.0	
Flemish Region	0.6	0.4	0.4	0.5	0.3	0.5	0.5	0.4	0.4	0.4	0.5	0.5	0.4	0.6	0.5	0.6	[-1.5; 2.7]
Walloon Region	0.3	0.4	0.3	0.4	0.3	0.3	0.2	0.4	0.3	0.3	0.4	0.2	0.5	0.2	0.2	-2.0	[-5.2; 1.3]

WSR=Age-Standardised Rate, using the World Standard Population (N/100,000 person-years)
 AAPC = Average Annual Percentage Change over the 2005-2019 period

Figure 4: Mesothelioma: Age-standardised incidence rates (WSR) by incidence year, sex and region



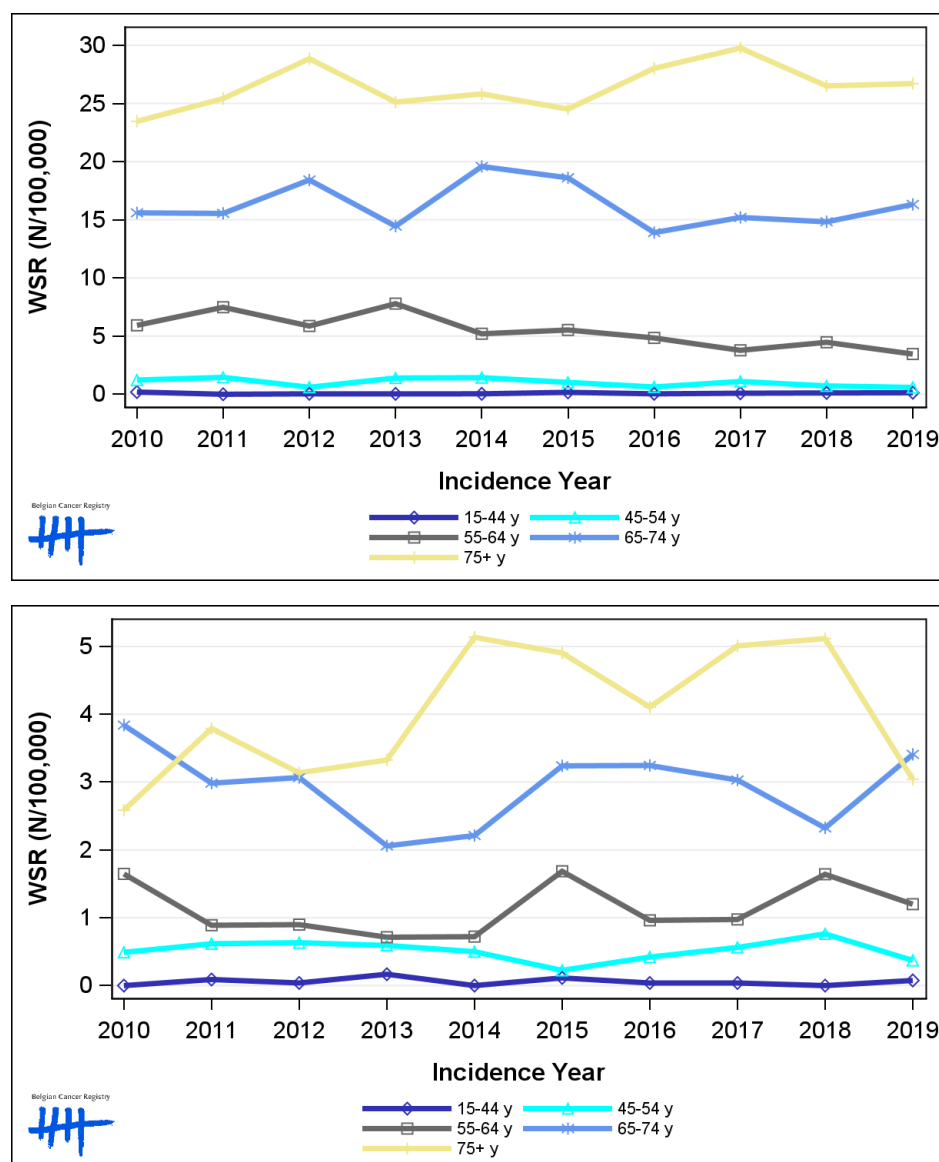
1.5. Incidence by broad age groups

Table 5: Mesothelioma: Number of new diagnoses and age-standardised incidence rates (WSR) by broad age groups and incidence year by sex, Belgium

	N										WSR									
	2010	2011	2012	2013	2014	2015	2016	2017	2018	2019	2010	2011	2012	2013	2014	2015	2016	2017	2018	2019
Males																				
All ages	204	222	235	228	244	239	219	238	230	235	1.9	2.0	2.1	2.0	2.1	2.0	1.7	1.8	1.8	1.7
0-14 y	0	0	0	0	0	0	0	0	0	0	0.0	0.0	0.0	0.0	0.0	0.0	0.0	0.0	0.0	0.0
15-44 y	4	0	1	1	1	4	1	2	3	3	0.2	0.0	<0.1	<0.1	<0.1	0.2	<0.1	<0.1	0.1	0.1
45-54 y	10	12	5	12	12	9	5	9	6	5	1.2	1.5	0.6	1.4	1.4	1.0	0.6	1.1	0.7	0.6
55-64 y	38	50	39	52	36	38	33	27	32	25	5.9	7.5	5.9	7.8	5.2	5.5	4.8	3.8	4.5	3.5
65-74 y	67	70	86	68	93	91	70	81	82	92	15.6	15.5	18.4	14.5	19.6	18.6	13.9	15.2	14.8	16.3
75+ y	85	90	104	95	102	97	110	119	107	110	23.5	25.4	28.9	25.1	25.8	24.5	28.0	29.8	26.5	26.7
Females																				
All ages	52	50	44	44	49	65	54	62	62	53	0.4	0.4	0.4	0.4	0.3	0.5	0.4	0.4	0.4	0.4
0-14 y	0	0	0	0	0	0	0	0	0	0	0.0	0.0	0.0	0.0	0.0	0.0	0.0	0.0	0.0	0.0
15-44 y	0	2	1	4	0	3	1	1	0	2	0.0	<0.1	<0.1	0.2	0.0	0.1	<0.1	<0.1	0.0	<0.1
45-54 y	4	5	5	5	4	2	3	5	6	3	0.5	0.6	0.6	0.6	0.5	0.2	0.4	0.6	0.8	0.4
55-64 y	11	6	6	5	5	12	7	7	12	9	1.6	0.9	0.9	0.7	0.7	1.7	1.0	1.0	1.6	1.2
65-74 y	20	14	15	11	12	17	18	18	14	22	3.8	3.0	3.1	2.1	2.2	3.2	3.2	3.0	2.3	3.4
75+ y	17	23	17	19	28	31	25	31	30	17	2.6	3.8	3.1	3.3	5.1	4.9	4.1	5.0	5.1	3.0

N=Number of invasive tumours
WSR=Age-Standardised Rate, using the World Standard Population (N/100,000 person-years)

Figure 5: Mesothelioma: Age-standardised incidence rates (WSR) versus incidence year by broad age groups for males (top) and females (bottom), Belgium



2. Relative survival

Table 6: Mesothelioma: 5-year relative survival proportion by sex, age group and region, Belgium 2015-2019

	5-year relative survival 2015-2019 (%)					
	Males			Females		
	N at risk	estimate	95% CI	N at risk	estimate	95% CI
Overall	1,156	9.2	[6.9, 11.9]	296	18.1	[12.9, 24.1]
Age group						
15-59 years	99	24.0	[14.4, 35.0]	46	32.1	[17.5, 47.8]
60-74 years	517	12.1	[8.5, 16.5]	116	16.4	[8.5, 26.6]
75+ years	540	2.3	[0.7, 5.8]	134	13.5	[7.2, 22.2]
Region						
Brussels-Capital Region	40	0.3	[0.0, 7.8]	24	NA (N<35)	-
Flemish Region	783	10.2	[7.3, 13.6]	201	18.7	[12.5, 25.9]
Walloon Region	333	9.4	[5.6, 14.6]	71	14.4	[5.9, 27.0]

Figure 6: Mesothelioma: relative survival proportion by sex, Belgium 2015-2019

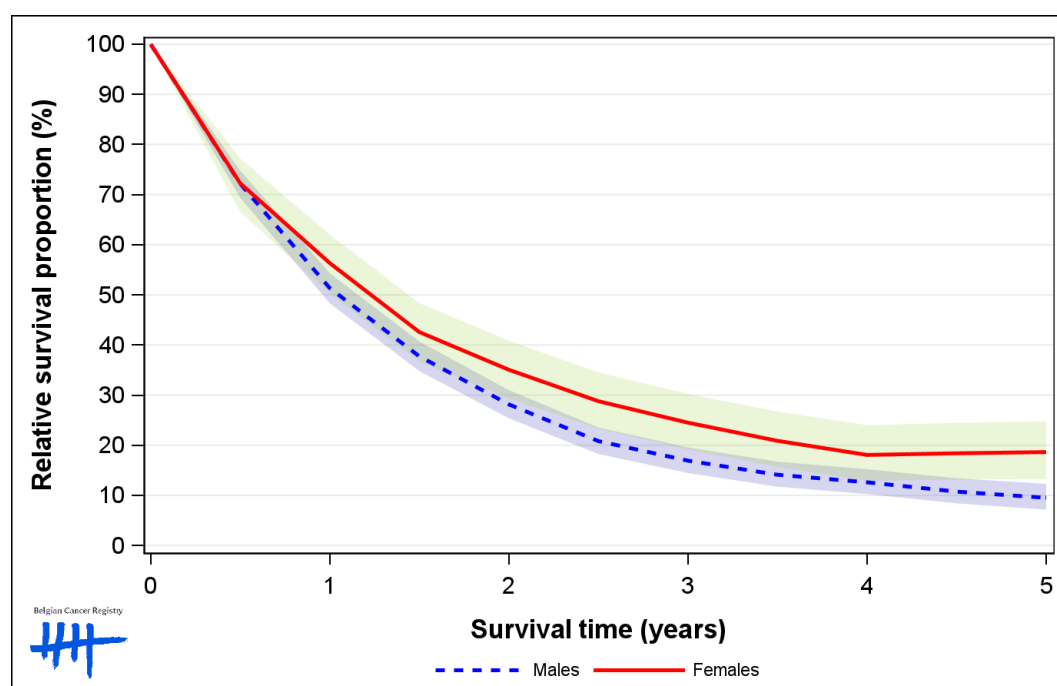


Figure 7: Mesothelioma: relative survival proportion by age group in males, Belgium 2015-2019

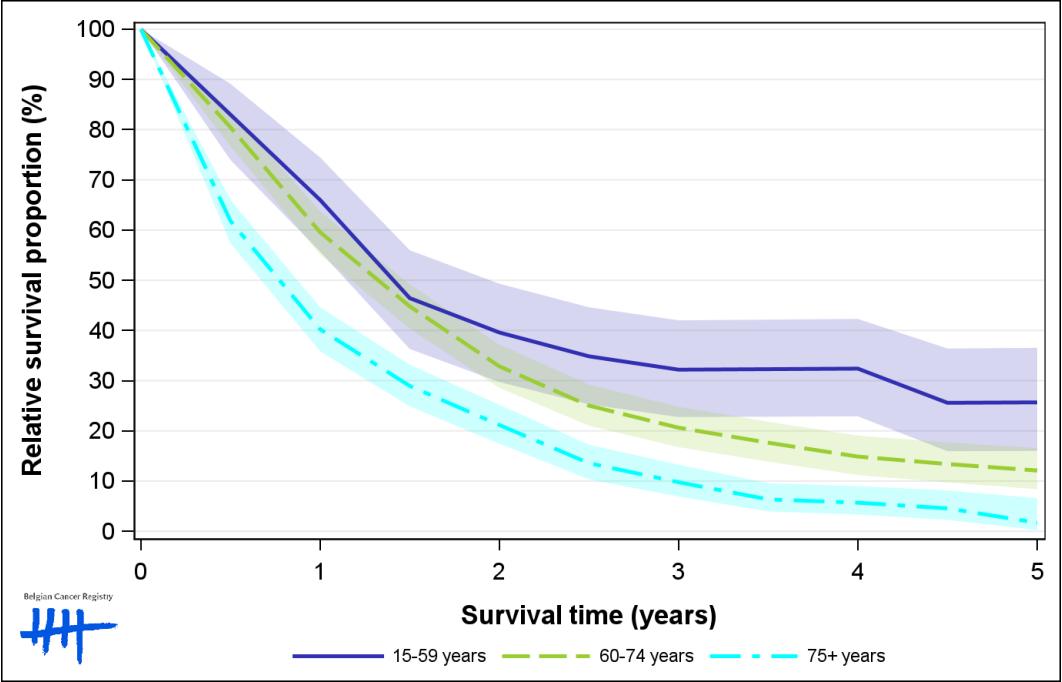


Figure 8: Mesothelioma: relative survival proportion by age group in females, Belgium 2015-2019

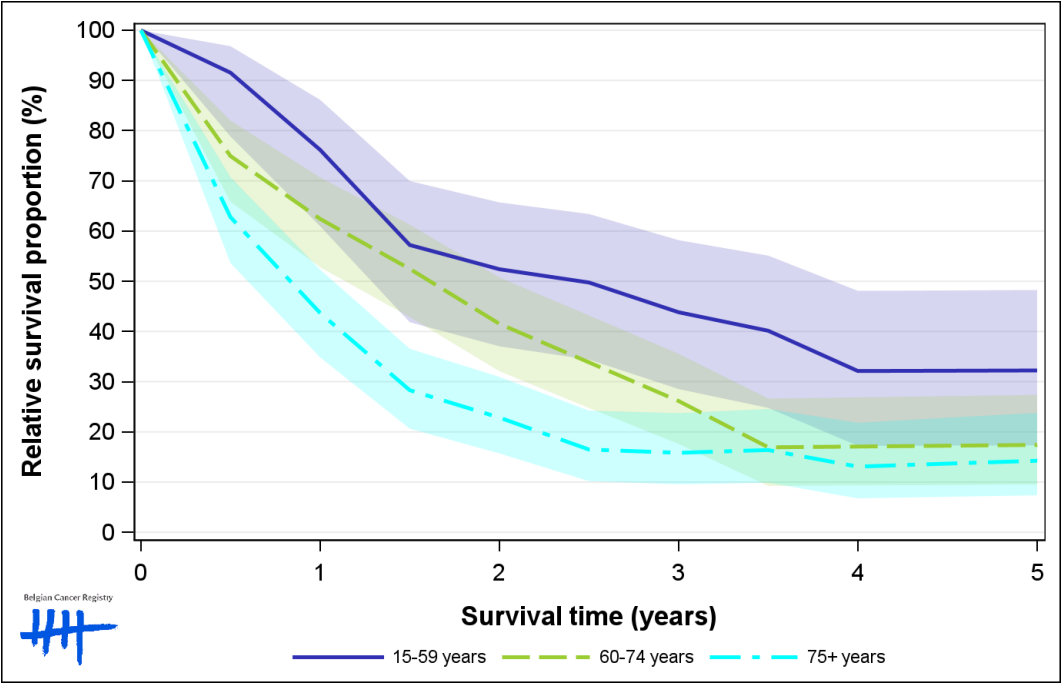


Figure 9: Mesothelioma: relative survival proportion by region in males, Belgium 2015-2019

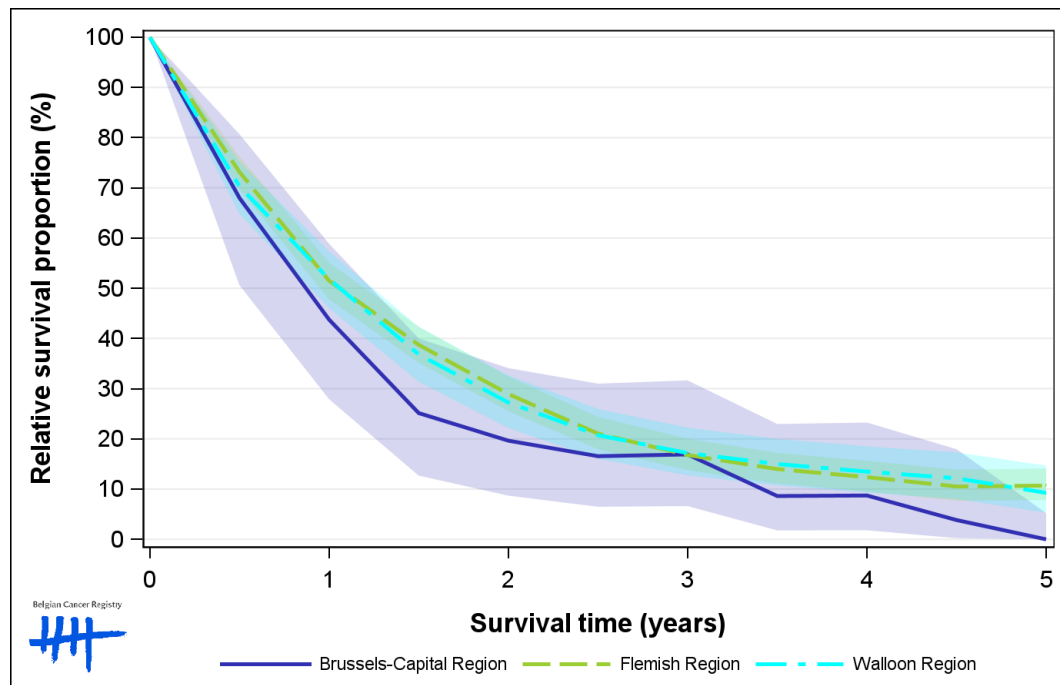


Figure 10: Mesothelioma: relative survival proportion by region in females, Belgium 2015-2019

