

Belgian Cancer Registry



Cancer Fact Sheet **Lung Cancer**

ICD10 : C34

Belgium 2019

1. Cancer Incidence

1.1. Number of new diagnoses and incidence rates

Table 1: Lung Cancer: Average age at diagnosis, number of new cancer diagnoses (N), crude rate (CR), age-standardised incidence rates (ESR and WSR) and cumulative risk by sex and region, 2019

Males	Age (years)	N	CR	ESR	WSR	CRi
Belgium	69.9	5,624	99.9	70.5	47.4	5.92
Brussels-Capital Region	68.0	383	64.6	67.0	45.8	5.69
Flemish Region	71.0	3,277	100.5	64.9	43.2	5.35
Walloon Region	68.5	1,964	110.6	81.8	55.6	7.03

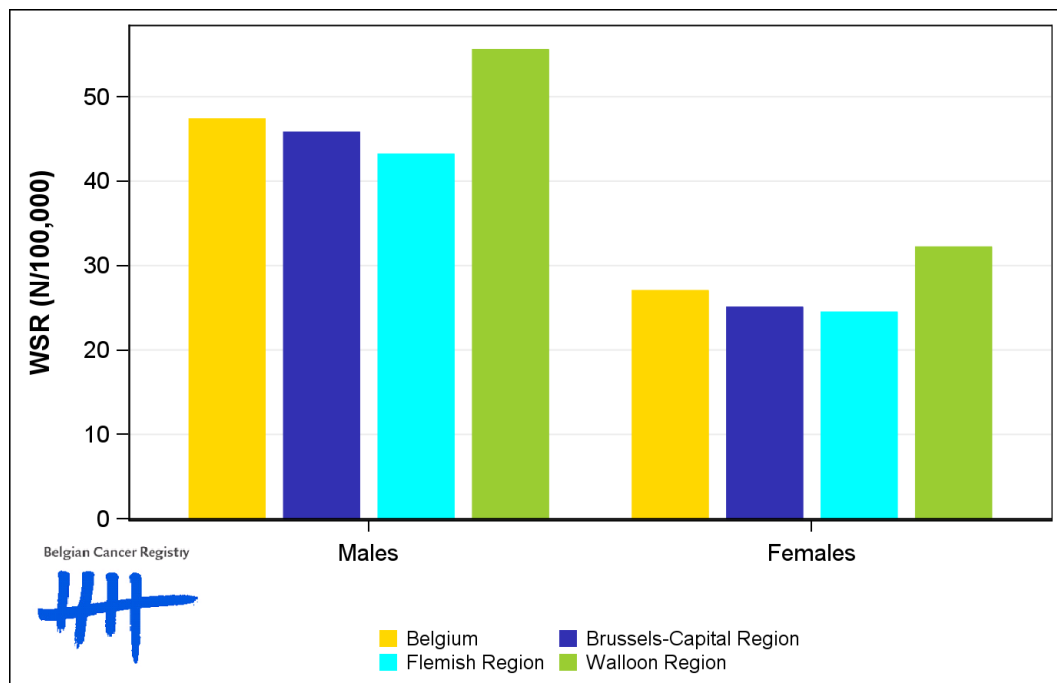
Females	Age (years)	N	CR	ESR	WSR	CRi
Belgium	67.7	3,250	56.0	38.7	27.0	3.53
Brussels-Capital Region	67.3	245	39.8	36.1	25.1	3.24
Flemish Region	68.8	1,814	54.5	35.2	24.5	3.22
Walloon Region	66.2	1,191	64.1	45.7	32.2	4.15

CR=Crude (all ages) Rate (N/100,000 person-years)
 ESR (1976)=Age-Standardised Rate, using the European Standard Population (N/100,000 person-years)
 WSR=Age-Standardised Rate, using the World Standard Population (N/100,000 person-years)
 CRi=Cumulative Risk for 0-74 years (%)

Belgian Cancer Registry



Figure 1: Lung Cancer: Age-standardised incidence rates by sex and region, 2019



1.2. Age-specific incidence rates

Table 2: Lung Cancer: Age-specific incidence rates, crude rate (CR) and age-standardised incidence rates (ESR and WSR) by sex, Belgium 2019

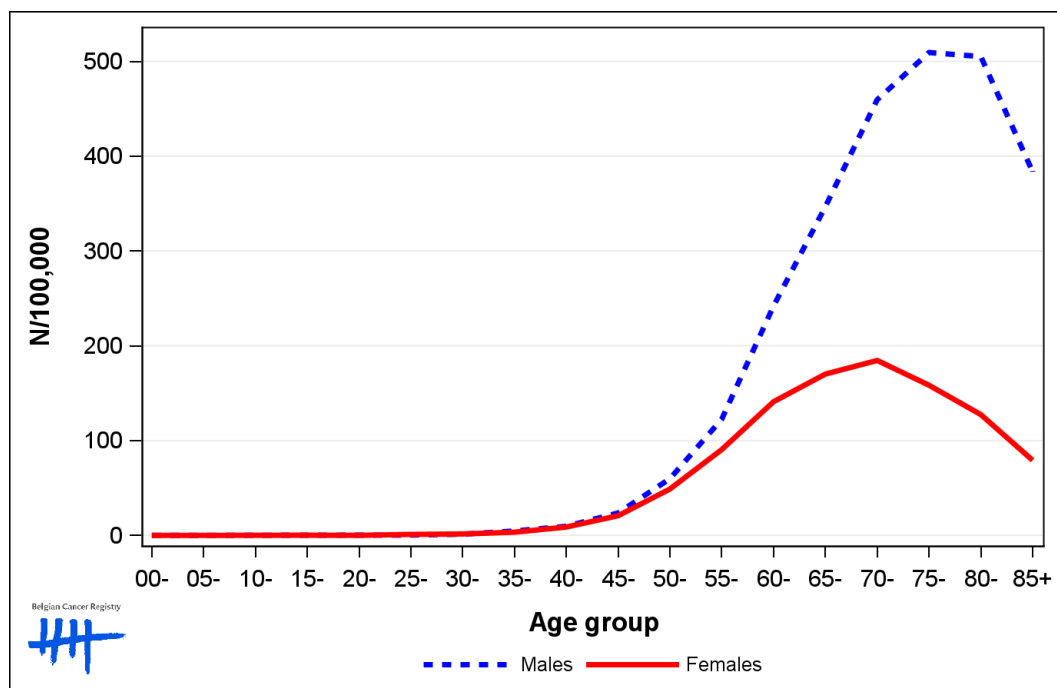
	00-	05-	10-	15-	20-	25-	30-	35-	40-	45-	50-	55-	60-	65-	70-	75-	80-	85+	CR	ESR	WSR
Males	0.0	0.0	0.0	0.6	0.6	0.5	1.1	5.9	9.5	25.4	54.9	109.9	229.2	338.3	444.1	507.0	499.4	356.7	99.9	70.5	47.4
Females	0.0	0.0	0.0	0.0	0.3	0.5	2.2	3.2	9.1	19.0	53.7	94.1	139.3	194.3	202.8	187.3	151.9	79.6	56.0	38.7	27.0

CR=Crude (all ages) Rate (N/100,000 person-years)

ESR (1976)=Age-Standardised Rate, using the European Standard Population (N/100,000 person-years)

WSR=Age-Standardised Rate, using the World Standard Population (N/100,000 person-years)

Figure 2: Lung Cancer: Age-specific incidence rates by sex, 2015-2019



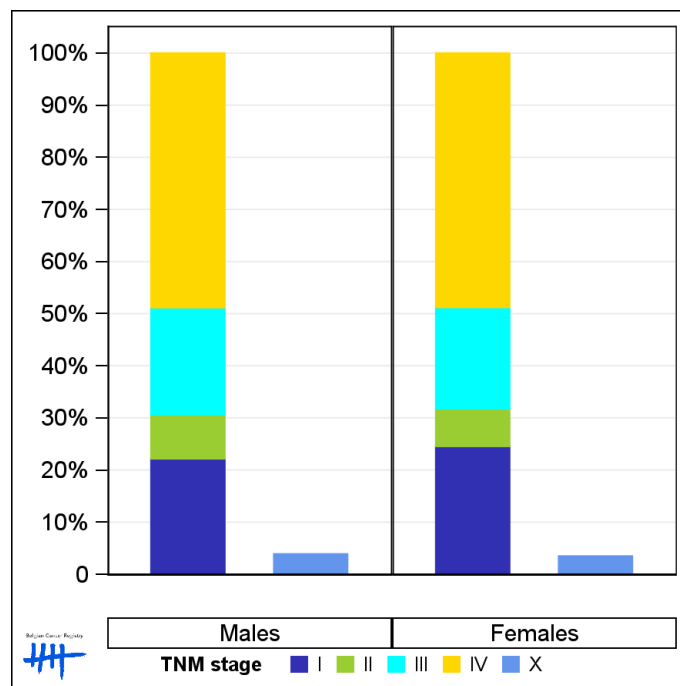
1.3. Combined stage

Table 3: Lung Cancer: Distribution of combined stage by sex, Belgium 2019

	Stage I	Stage II	Stage III	Stage IV	Stage X	Stage NA	Total
Males							
N	1,196	455	1,112	2,636	219	6	5,624
%	21.3	8.1	19.8	46.9	3.9	0.1	100
Females							
N	767	225	608	1,524	113	13	3,250
%	23.6	6.9	18.7	46.9	3.5	0.4	100

Staging according to the TNM 8th edition (Ref: Brierley JD, Gospodarowicz MK, Wittekind Ch. TNM classification of malignant tumours, UICC 8th edition)
 Combined TNM stage : compilation of pathological (pTNM) and clinical (cTNM) stage. pTNM prevails over cTNM, except when cTNM stage is IV
 Stage X: diagnoses with an unknown stage
 Stage NA: diagnoses with a histological diagnosis where no stage can be evaluated (Not Applicable)

Figure 3: Lung Cancer: Bar chart of known combined stage by sex, Belgium 2019



1.4. Trends in incidence

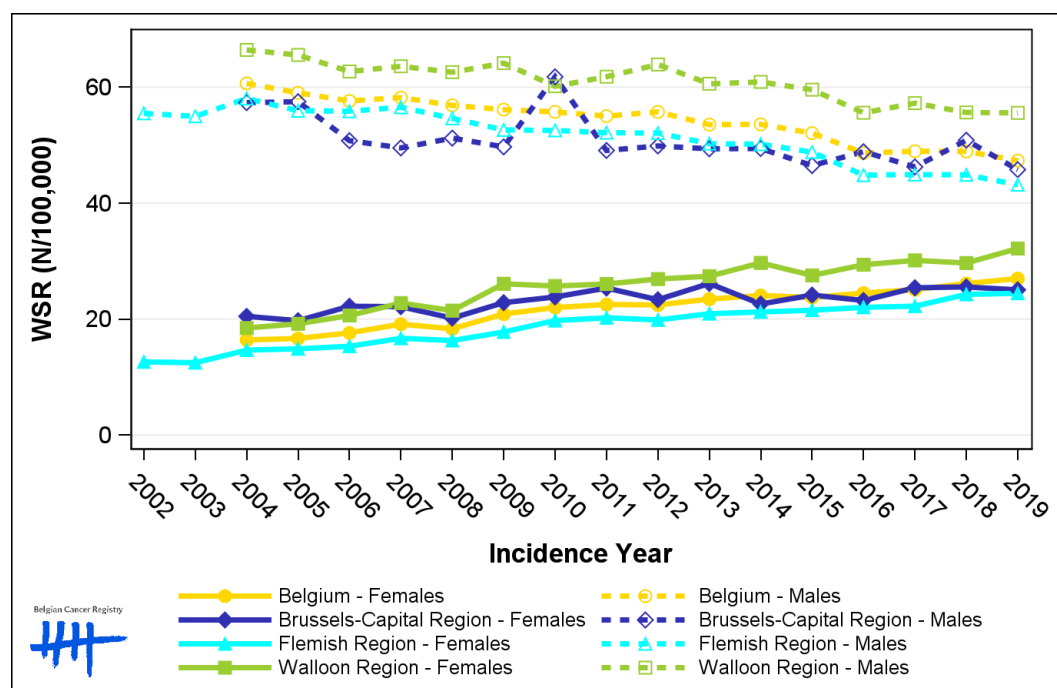
Table 4: Lung Cancer: Age-standardised incidence rates (WSR) and average annual percentage change (AAPC) by incidence year, sex and region

Males	2005	2006	2007	2008	2009	2010	2011	2012	2013	2014	2015	2016	2017	2018	2019	AAPC	95% CI
Belgium	59.0	57.6	58.2	56.9	56.1	55.7	55.0	55.7	53.6	53.6	52.1	48.6	49.0	48.9	47.4	-1.5	[-1.7; -1.4]
Brussels-Capital Region	57.5	50.8	49.5	51.2	49.7	61.8	49.1	49.9	49.4	49.4	46.5	48.9	46.3	50.9	45.8	-1.0	[-1.8; -0.1]
Flemish Region	55.9	55.9	56.5	54.6	52.6	52.6	52.2	52.1	50.3	50.2	48.8	44.8	44.9	44.9	43.2	-2.0	[-2.2; -1.7]
Walloon Region	65.6	62.7	63.6	62.6	64.2	60.2	61.8	63.9	60.6	60.9	59.6	55.6	57.3	55.6	55.6	-1.1	[-1.4; -0.8]

Females	2005	2006	2007	2008	2009	2010	2011	2012	2013	2014	2015	2016	2017	2018	2019	AAPC	95% CI
Belgium	16.7	17.6	19.1	18.3	20.9	22.0	22.5	22.5	23.5	24.1	23.7	24.5	25.1	26.1	27.0	3.4	[3.0; 3.7]
Brussels-Capital Region	19.7	22.2	22.2	20.2	22.9	23.8	25.4	23.4	26.2	22.6	24.2	23.2	25.4	25.6	25.1	1.4	[0.6; 2.1]
Flemish Region	14.9	15.3	16.7	16.3	17.8	19.8	20.2	19.9	20.9	21.2	21.5	22.0	22.2	24.3	24.5	3.7	[3.3; 4.0]
Walloon Region	19.2	20.6	22.8	21.5	26.1	25.7	26.1	26.9	27.4	29.7	27.5	29.4	30.1	29.7	32.2	3.6	[3.0; 4.1]

WSR=Age-Standardised Rate, using the World Standard Population (N/100,000 person-years)
AAPC = Average Annual Percentage Change over the 2005-2019 period

Figure 4: Lung Cancer: Age-standardised incidence rates (WSR) by incidence year, sex and region



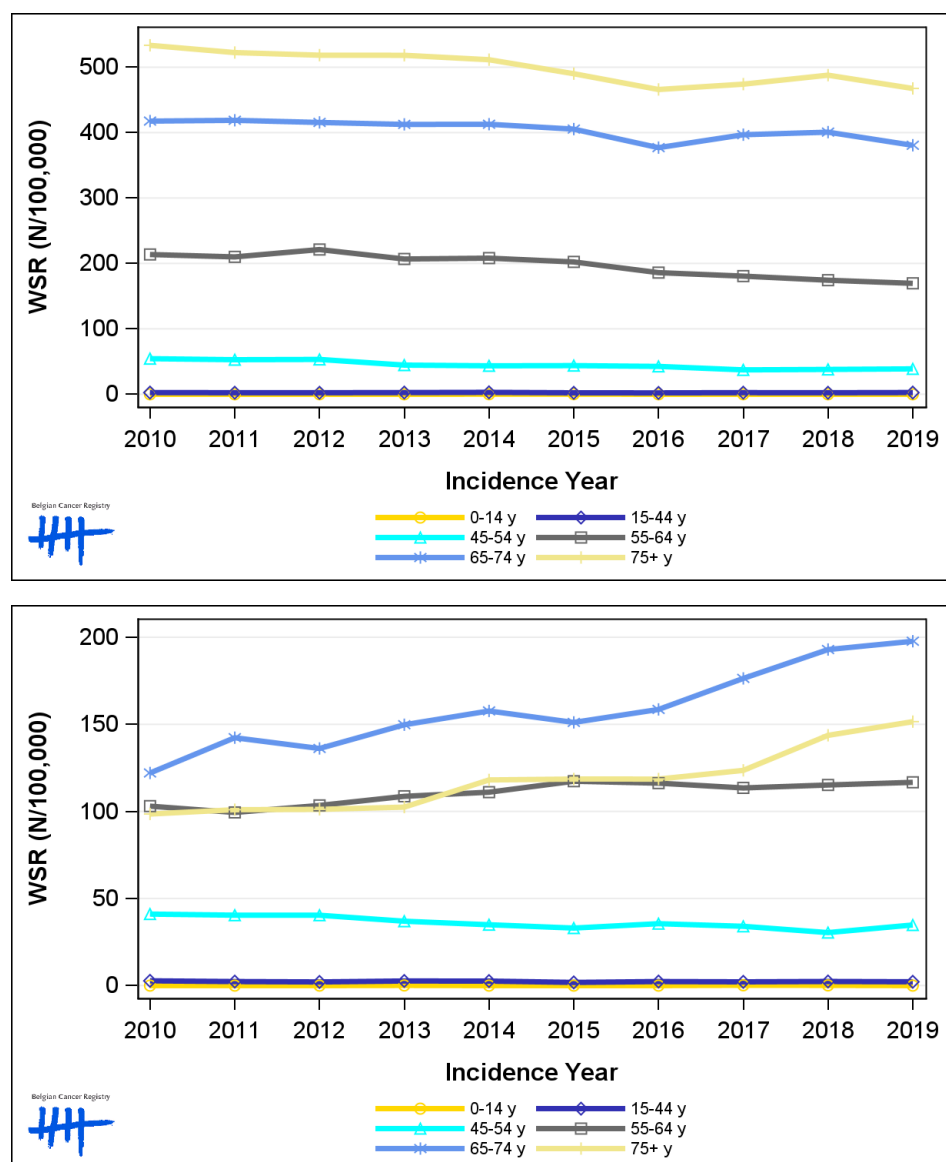
1.5. Incidence by broad age groups

Table 5: Lung Cancer: Number of new diagnoses and age-standardised incidence rates (WSR) by broad age groups and incidence year by sex, Belgium

	N										WSR									
	2010	2011	2012	2013	2014	2015	2016	2017	2018	2019	2010	2011	2012	2013	2014	2015	2016	2017	2018	2019
Males																				
All ages	5,659	5,647	5,813	5,717	5,795	5,730	5,452	5,607	5,738	5,624	55.7	55.0	55.7	53.6	53.6	52.1	48.6	49.0	48.9	47.4
0-14 y	0	0	1	0	1	2	0	1	0	0	0.0	0.0	<0.1	0.0	0.1	0.2	0.0	<0.1	0.0	0.0
15-44 y	70	63	62	69	76	59	55	65	60	67	2.6	2.4	2.3	2.6	2.9	2.2	2.1	2.5	2.3	2.6
45-54 y	446	439	448	377	370	374	366	317	319	323	54.4	52.8	53.3	44.6	43.5	43.8	42.6	37.3	38.0	38.8
55-64 y	1,383	1,394	1,473	1,392	1,412	1,386	1,293	1,279	1,254	1,237	213.7	210.0	221.3	206.8	208.1	202.3	186.0	180.6	174.4	169.6
65-74 y	1,840	1,846	1,891	1,916	1,962	1,976	1,896	2,081	2,174	2,120	417.6	418.9	415.6	412.6	412.8	405.4	377.0	396.8	400.7	380.7
75+ y	1,920	1,905	1,938	1,963	1,974	1,933	1,842	1,864	1,931	1,877	533.5	522.4	518.4	518.3	511.5	490.1	466.0	474.1	487.9	467.6
Females																				
All ages	2,241	2,343	2,365	2,494	2,656	2,662	2,746	2,874	3,097	3,250	22.0	22.5	22.5	23.5	24.1	23.7	24.5	25.1	26.1	27.0
0-14 y	0	0	0	1	0	0	0	2	1	0	0.0	0.0	0.0	<0.1	0.0	0.0	0.0	0.2	0.1	0.0
15-44 y	72	62	53	68	67	47	57	56	60	56	2.7	2.3	2.1	2.6	2.6	1.8	2.3	2.2	2.4	2.2
45-54 y	331	332	333	308	291	274	294	283	251	286	41.1	40.4	40.4	37.0	34.9	33.0	35.6	34.0	30.4	34.8
55-64 y	685	675	710	751	772	829	832	826	847	874	103.0	99.4	103.4	108.7	111.0	117.3	116.2	113.5	115.2	116.7
65-74 y	595	693	686	775	829	810	877	1,007	1,134	1,187	122.1	142.3	136.1	149.8	157.7	151.1	158.6	176.4	193.0	197.7
75+ y	558	581	583	591	697	702	686	700	804	847	98.5	101.0	101.2	102.5	118.1	118.6	118.6	123.6	143.7	151.5

N=Number of invasive tumours
WSR=Age-Standardised Rate, using the World Standard Population (N/100,000 person-years)

Figure 5: Lung Cancer: Age-standardised incidence rates (WSR) versus incidence year by broad age groups for males (top) and females (bottom), Belgium



2. Relative survival

Table 6: Lung Cancer: 5-year relative survival proportion by sex, age group and region, Belgium 2015-2019

	5-year relative survival 2015-2019 (%)					
	Males			Females		
	N at risk	estimate	95% CI	N at risk	estimate	95% CI
Overall	27,821	22.1	[21.4, 22.7]	14,453	29.6	[28.6, 30.6]
Age group						
15-49 years	760	32.0	[28.1, 35.9]	666	46.2	[41.7, 50.6]
50-64 years	7,594	27.2	[26.0, 28.5]	5,135	33.9	[32.3, 35.5]
65+ years	19,479	19.4	[18.6, 20.2]	8,660	25.4	[24.2, 26.8]
Region						
Brussels-Capital Region	1,910	23.6	[21.0, 26.3]	1,175	30.8	[27.4, 34.4]
Flemish Region	16,346	22.1	[21.2, 22.9]	7,959	28.7	[27.4, 30.0]
Walloon Region	9,566	21.7	[20.6, 22.9]	5,319	30.7	[29.0, 32.3]

Figure 6: Lung Cancer: relative survival proportion by sex, Belgium 2015-2019

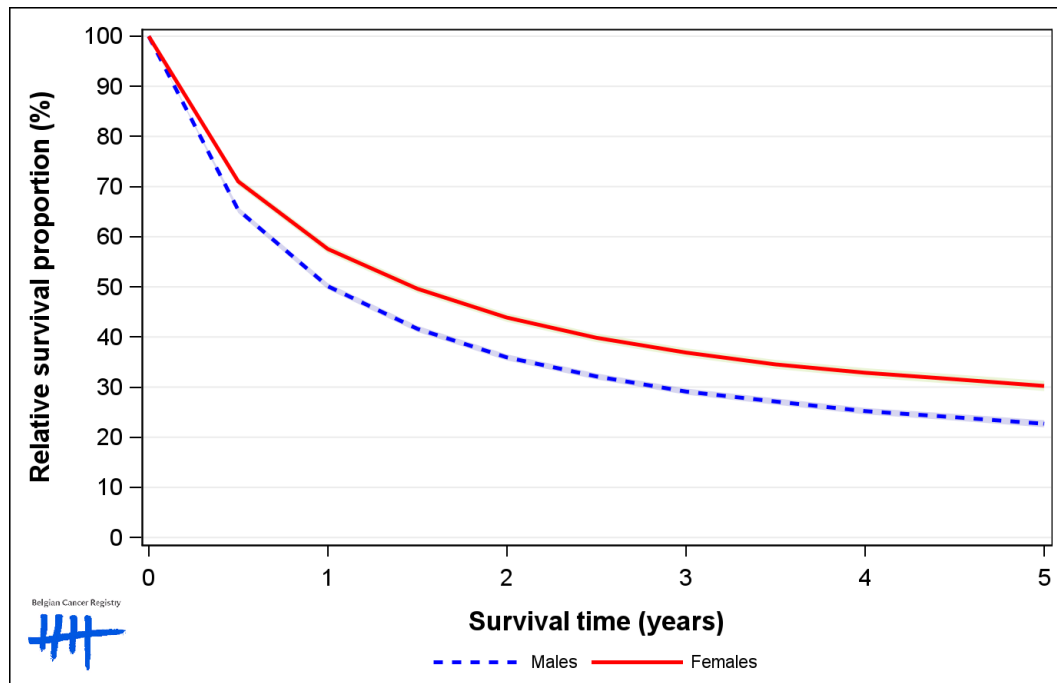


Figure 7: Lung Cancer: relative survival proportion by age group in males, Belgium 2015-2019

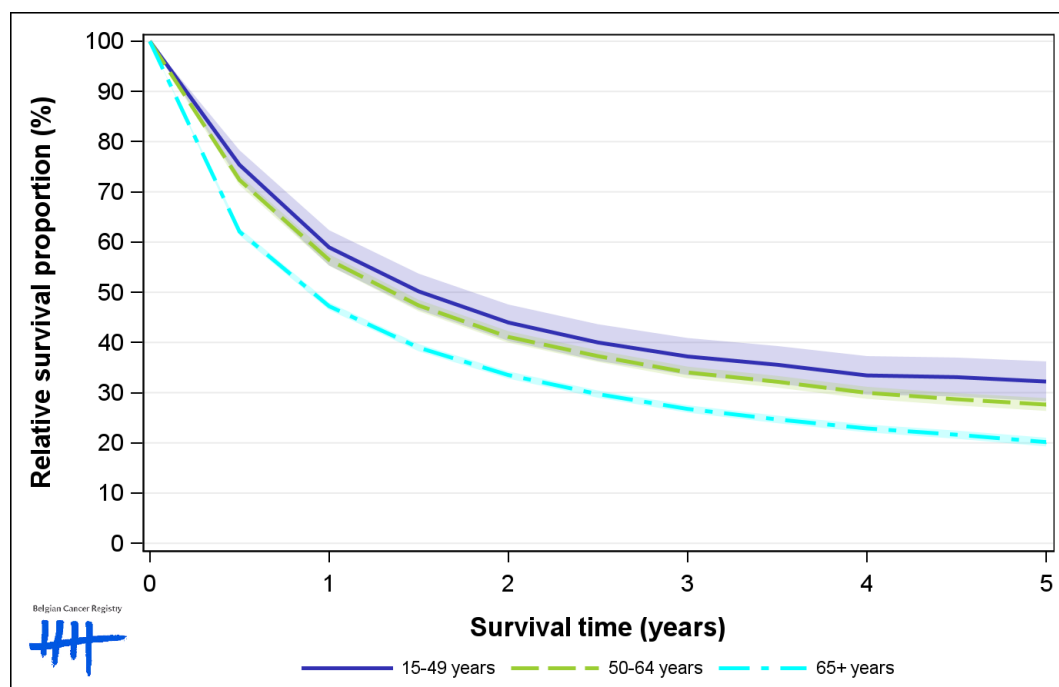


Figure 8: Lung Cancer: relative survival proportion by age group in females, Belgium 2015-2019

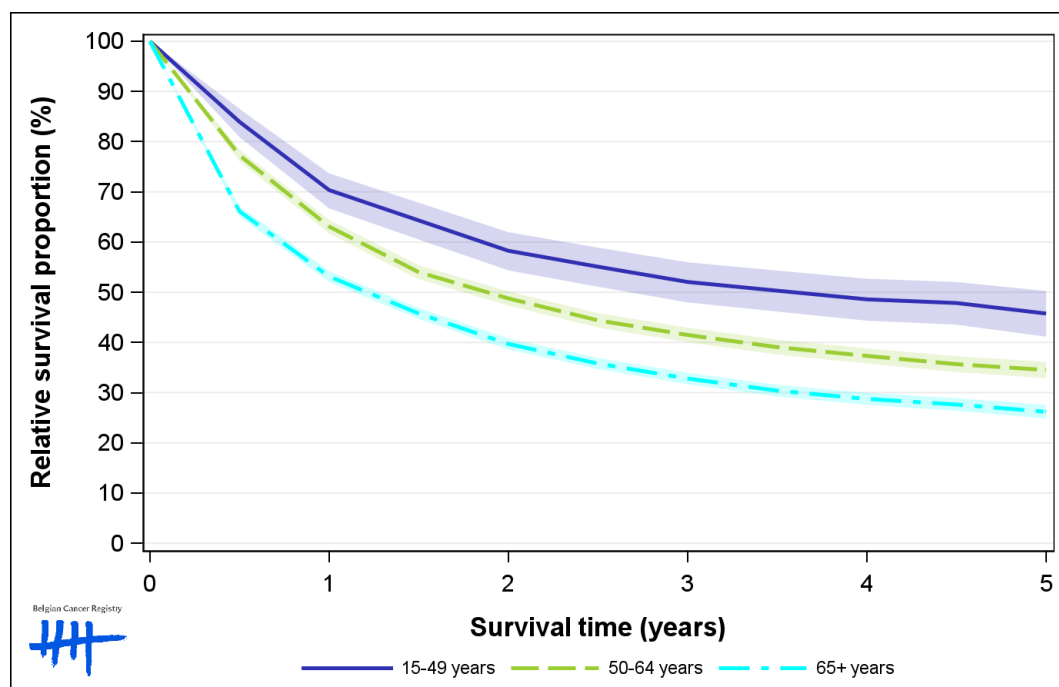


Figure 9: Lung Cancer: relative survival proportion by region in males, Belgium 2015-2019

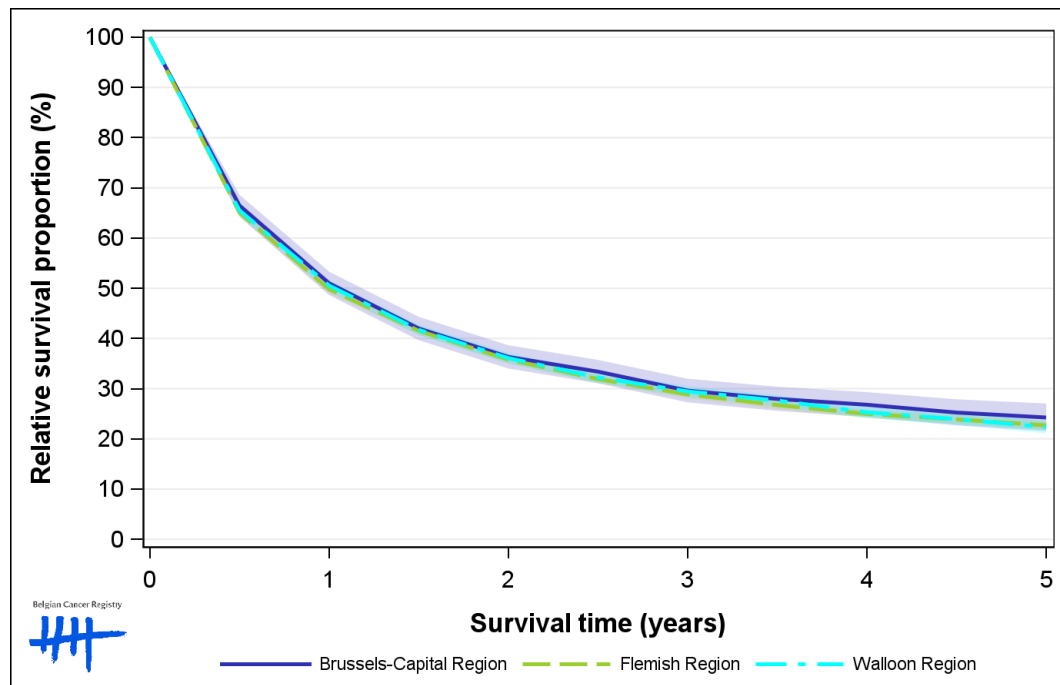


Figure 10: Lung Cancer: relative survival proportion by region in females, Belgium 2015-2019

