

Belgian Cancer Registry



# Cancer Fact Sheet **Liver Cancer**

ICD10 : C22

**Belgium 2019**

# 1. Cancer Incidence

## 1.1. Number of new diagnoses and incidence rates

**Table 1:** Liver cancer: Average age at diagnosis, number of new cancer diagnoses (N), crude rate (CR), age-standardised incidence rates (ESR and WSR) and cumulative risk by sex and region, 2019

Males	Age (years)	N	CR	ESR	WSR	CRi
<b>Belgium</b>	<b>68.8</b>	<b>804</b>	<b>14.3</b>	<b>10.2</b>	<b>7.0</b>	<b>0.90</b>
Brussels-Capital Region	65.5	63	10.6	10.7	7.5	0.88
Flemish Region	69.8	396	12.1	8.0	5.5	0.71
Walloon Region	68.4	345	19.4	14.4	9.8	1.27

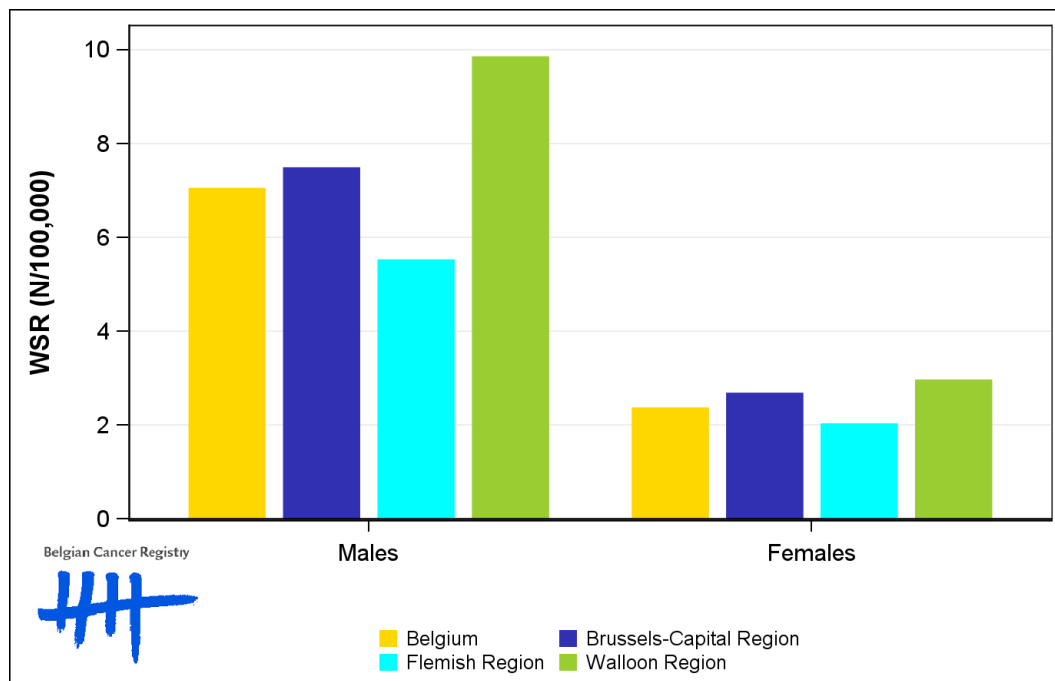
Females	Age (years)	N	CR	ESR	WSR	CRi
<b>Belgium</b>	<b>69.4</b>	<b>302</b>	<b>5.2</b>	<b>3.4</b>	<b>2.4</b>	<b>0.28</b>
Brussels-Capital Region	71.8	31	5.0	4.1	2.7	0.33
Flemish Region	69.7	154	4.6	2.8	2.0	0.24
Walloon Region	68.4	117	6.3	4.2	3.0	0.35

CR=Crude (all ages) Rate (N/100,000 person-years)  
 ESR (1976)=Age-Standardised Rate, using the European Standard Population (N/100,000 person-years)  
 WSR=Age-Standardised Rate, using the World Standard Population (N/100,000 person-years)  
 CRi=Cumulative Risk for 0-74 years (%)

Belgian Cancer Registry



**Figure 1:** Liver cancer: Age-standardised incidence rates by sex and region, 2019



## 1.2. Age-specific incidence rates

**Table 2:** Liver cancer: Age-specific incidence rates, crude rate (CR) and age-standardised incidence rates (ESR and WSR) by sex, Belgium 2019

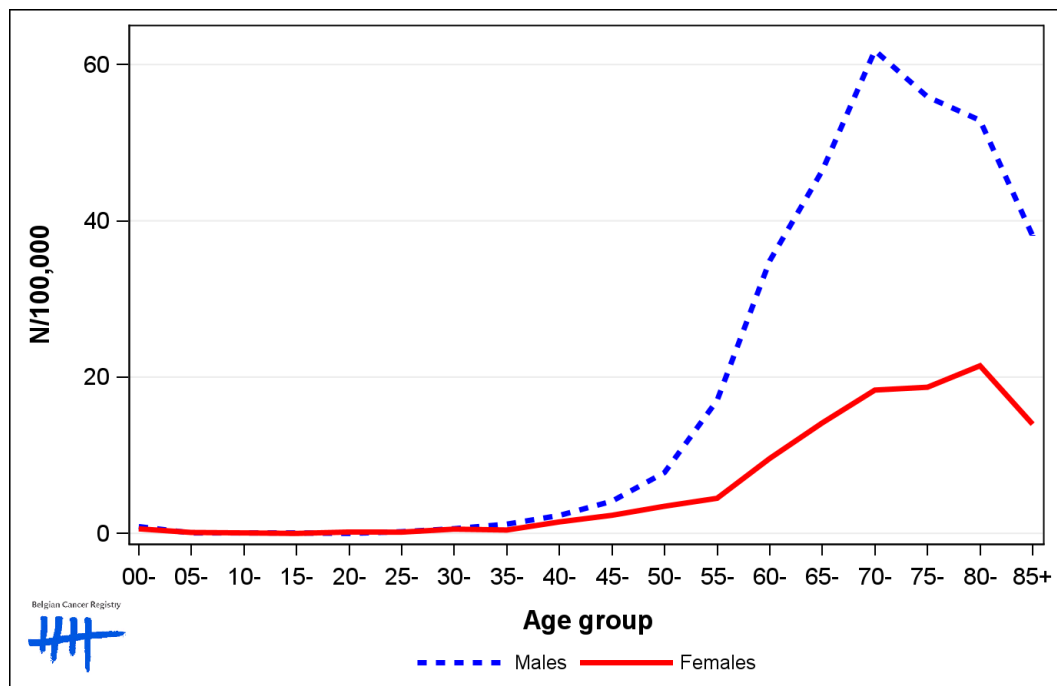
	00-	05-	10-	15-	20-	25-	30-	35-	40-	45-	50-	55-	60-	65-	70-	75-	80-	85+	CR	ESR	WSR
Males	1.3	0.0	0.0	0.0	0.0	0.3	0.8	1.3	2.2	4.3	5.4	17.2	34.6	48.9	64.8	69.0	61.8	48.3	14.3	10.2	7.0
Females	0.3	0.3	0.0	0.0	0.3	0.0	0.8	0.3	1.7	3.4	3.0	3.3	9.4	15.5	18.5	23.3	20.2	13.6	5.2	3.4	2.4

CR=Crude (all ages) Rate (N/100,000 person-years)

ESR (1976)=Age-Standardised Rate, using the European Standard Population (N/100,000 person-years)

WSR=Age-Standardised Rate, using the World Standard Population (N/100,000 person-years)

**Figure 2:** Liver cancer: Age-specific incidence rates by sex, 2015-2019



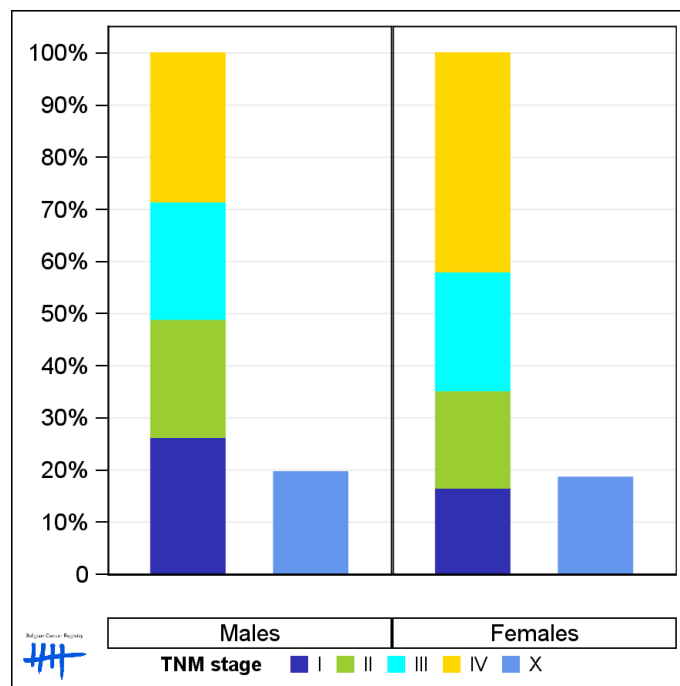
### 1.3. Combined stage

**Table 3:** Liver cancer: Distribution of combined stage by sex, Belgium 2019

	Stage I	Stage II	Stage III	Stage IV	Stage X	Stage NA	Total
<b>Males</b>							
N	168	145	144	182	156	9	804
%	20.9	18.0	17.9	22.6	19.4	1.1	100
<b>Females</b>							
N	40	45	55	101	55	6	302
%	13.2	14.9	18.2	33.4	18.2	2.0	100

Staging according to the TNM 8th edition (Ref: Brierley JD, Gospodarowicz MK, Wittekind Ch. TNM classification of malignant tumours, UICC 8th edition)  
 Combined TNM stage : compilation of pathological (pTNM) and clinical (cTNM) stage. pTNM prevails over cTNM, except when cTNM stage is IV  
 Stage X: diagnoses with an unknown stage  
 Stage NA: diagnoses with a histological diagnosis where no stage can be evaluated (Not Applicable)

**Figure 3:** Liver cancer: Bar chart of known combined stage by sex, Belgium 2019



## 1.4. Trends in incidence

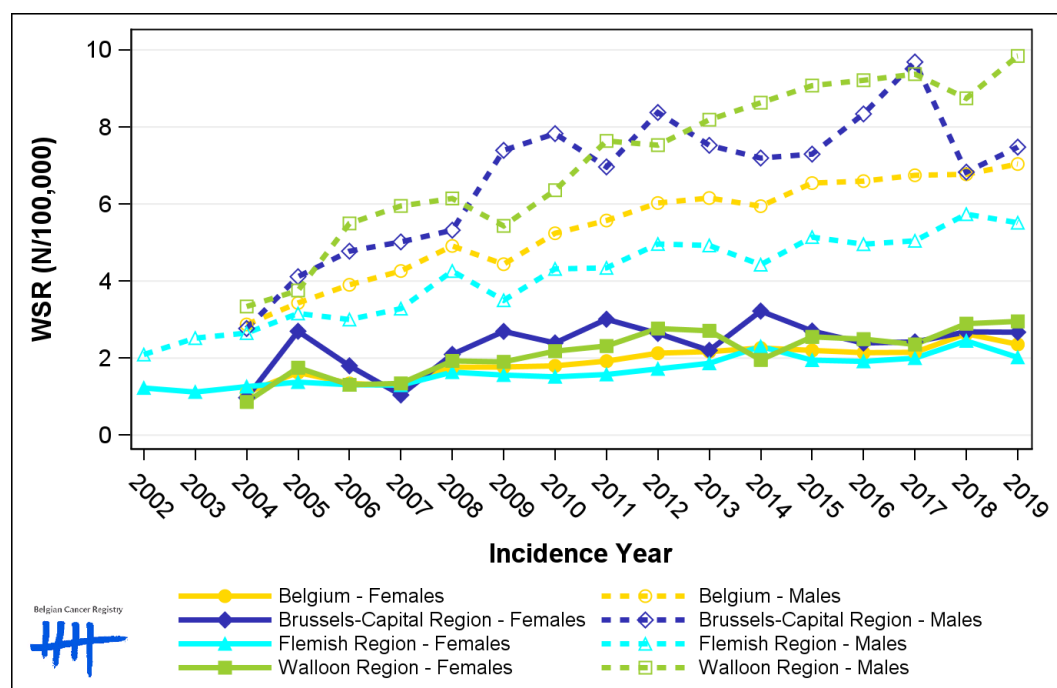
**Table 4:** Liver cancer: Age-standardised incidence rates (WSR) and average annual percentage change (AAPC) by incidence year, sex and region

Males	2005	2006	2007	2008	2009	2010	2011	2012	2013	2014	2015	2016	2017	2018	2019	AAPC	95% CI
<b>Belgium</b>	3.4	3.9	4.3	4.9	4.4	5.2	5.6	6.0	6.2	5.9	6.5	6.6	6.7	6.8	7.0	4.9	[4.3; 5.5]
Brussels-Capital Region	4.1	4.8	5.0	5.3	7.4	7.8	7.0	8.4	7.5	7.2	7.3	8.3	9.7	6.8	7.5	4.8	[3.4; 6.2]
Flemish Region	3.2	3.0	3.3	4.3	3.5	4.3	4.3	5.0	4.9	4.4	5.1	5.0	5.0	5.7	5.5	4.3	[3.3; 5.4]
Walloon Region	3.8	5.5	5.9	6.1	5.4	6.4	7.6	7.5	8.2	8.6	9.1	9.2	9.4	8.7	9.8	5.4	[4.1; 6.7]

Females	2005	2006	2007	2008	2009	2010	2011	2012	2013	2014	2015	2016	2017	2018	2019	AAPC	95% CI
<b>Belgium</b>	1.6	1.3	1.3	1.8	1.8	1.8	1.9	2.1	2.2	2.3	2.2	2.1	2.2	2.6	2.4	4.1	[2.8; 5.4]
Brussels-Capital Region	2.7	1.8	1.0	2.1	2.7	2.4	3.0	2.6	2.2	3.2	2.7	2.4	2.4	2.7	2.7	2.7	[-0.6; 6.0]
Flemish Region	1.4	1.3	1.3	1.6	1.6	1.5	1.6	1.7	1.9	2.3	1.9	1.9	2.0	2.4	2.0	4.0	[2.8; 5.2]
Walloon Region	1.8	1.3	1.3	1.9	1.9	2.2	2.3	2.8	2.7	2.0	2.6	2.5	2.4	2.9	3.0	4.8	[2.9; 6.7]

WSR=Age-Standardised Rate, using the World Standard Population (N/100,000 person-years)  
AAPC = Average Annual Percentage Change over the 2005-2019 period

**Figure 4:** Liver cancer: Age-standardised incidence rates (WSR) by incidence year, sex and region



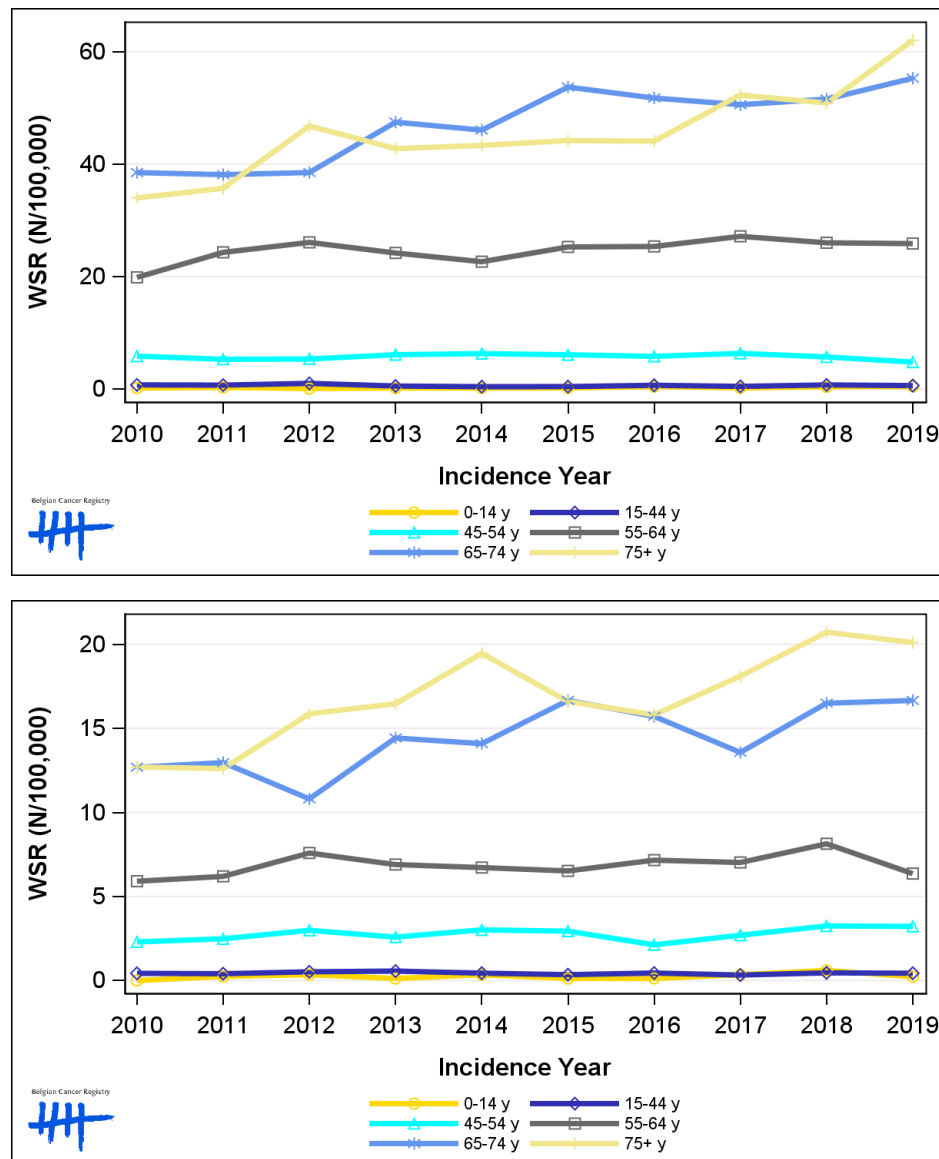
## 1.5. Incidence by broad age groups

**Table 5:** Liver cancer: Number of new diagnoses and age-standardised incidence rates (WSR) by broad age groups and incidence year by sex, Belgium

	N										WSR									
	2010	2011	2012	2013	2014	2015	2016	2017	2018	2019	2010	2011	2012	2013	2014	2015	2016	2017	2018	2019
<b>Males</b>																				
All ages	487	530	596	614	607	671	685	730	741	804	5.2	5.6	6.0	6.2	5.9	6.5	6.6	6.7	6.8	7.0
0-14 y	2	3	1	2	2	2	4	2	4	4	0.2	0.3	0.1	0.2	0.2	0.2	0.5	0.2	0.4	0.5
15-44 y	19	19	27	14	12	12	19	13	20	17	0.8	0.7	1.0	0.6	0.5	0.5	0.7	0.5	0.8	0.7
45-54 y	48	44	45	52	53	50	50	55	48	39	5.9	5.3	5.4	6.1	6.3	6.1	5.8	6.4	5.7	4.8
55-64 y	129	161	175	163	153	173	176	192	187	189	19.9	24.3	26.1	24.2	22.7	25.3	25.4	27.2	26.0	25.9
65-74 y	166	167	172	220	218	262	260	265	280	308	38.5	38.1	38.5	47.5	46.1	53.7	51.8	50.6	51.6	55.3
75+ y	123	136	176	163	169	172	176	203	202	247	34.0	35.7	46.8	42.8	43.3	44.2	44.1	52.3	50.9	62.0
<b>Females</b>																				
All ages	202	211	243	252	274	271	267	272	326	302	1.8	1.9	2.1	2.2	2.3	2.2	2.1	2.2	2.6	2.4
0-14 y	0	2	3	1	3	1	1	3	5	2	0.0	0.2	0.4	0.1	0.3	0.1	0.1	0.4	0.6	0.2
15-44 y	10	10	12	14	11	9	11	8	12	11	0.4	0.4	0.5	0.6	0.4	0.4	0.4	0.3	0.5	0.4
45-54 y	19	20	24	21	25	25	17	22	26	25	2.3	2.5	3.0	2.6	3.0	2.9	2.1	2.7	3.3	3.2
55-64 y	39	42	52	48	46	45	51	51	60	47	5.9	6.2	7.6	6.9	6.7	6.5	7.2	7.0	8.1	6.4
65-74 y	62	65	55	75	75	90	87	78	99	101	12.7	13.0	10.8	14.4	14.1	16.7	15.7	13.6	16.5	16.7
75+ y	72	72	97	93	114	101	100	110	124	116	12.7	12.6	15.9	16.5	19.5	16.6	15.8	18.1	20.7	20.1

N=Number of invasive tumours  
WSR=Age-Standardised Rate, using the World Standard Population (N/100,000 person-years)

**Figure 5:** Liver cancer: Age-standardised incidence rates (WSR) versus incidence year by broad age groups for males (top) and females (bottom), Belgium



## 2. Relative survival

**Table 6:** Liver cancer: 5-year relative survival proportion by sex, age group and region, Belgium 2015-2019

	5-year relative survival 2015-2019 (%)					
	Males			Females		
	N at risk	estimate	95% CI	N at risk	estimate	95% CI
<b>Overall</b>	3,587	22.2	[20.3, 24.2]	1,411	23.8	[21.0, 26.7]
<b>Age group</b>						
15-59 years	639	30.3	[25.9, 34.7]	248	34.7	[27.9, 41.6]
60-74 years	1,951	24.3	[21.8, 27.0]	617	26.8	[22.6, 31.1]
75+ years	997	11.2	[8.0, 15.2]	546	14.0	[9.4, 19.5]
<b>Region</b>						
Brussels-Capital Region	316	24.6	[17.7, 32.4]	137	28.9	[18.8, 40.2]
Flemish Region	1,760	21.6	[19.0, 24.4]	757	22.5	[18.9, 26.4]
Walloon Region	1,511	22.5	[19.5, 25.5]	517	24.2	[19.6, 29.2]

**Figure 6:** Liver cancer: relative survival proportion by sex, Belgium 2015-2019

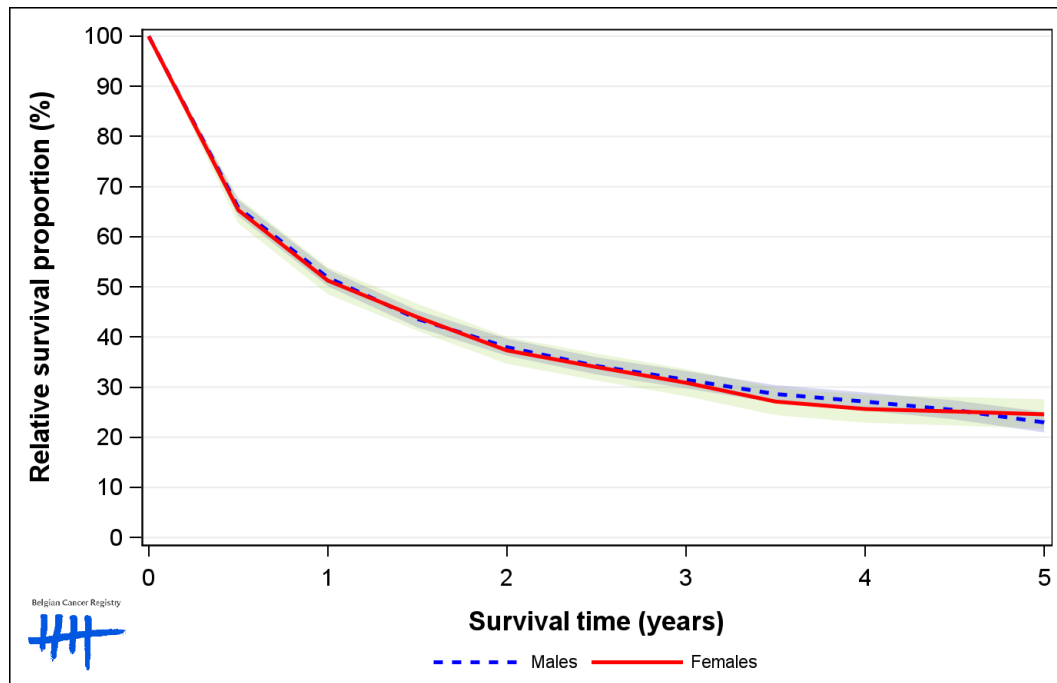


Figure 7: Liver cancer: relative survival proportion by age group in males, Belgium 2015-2019

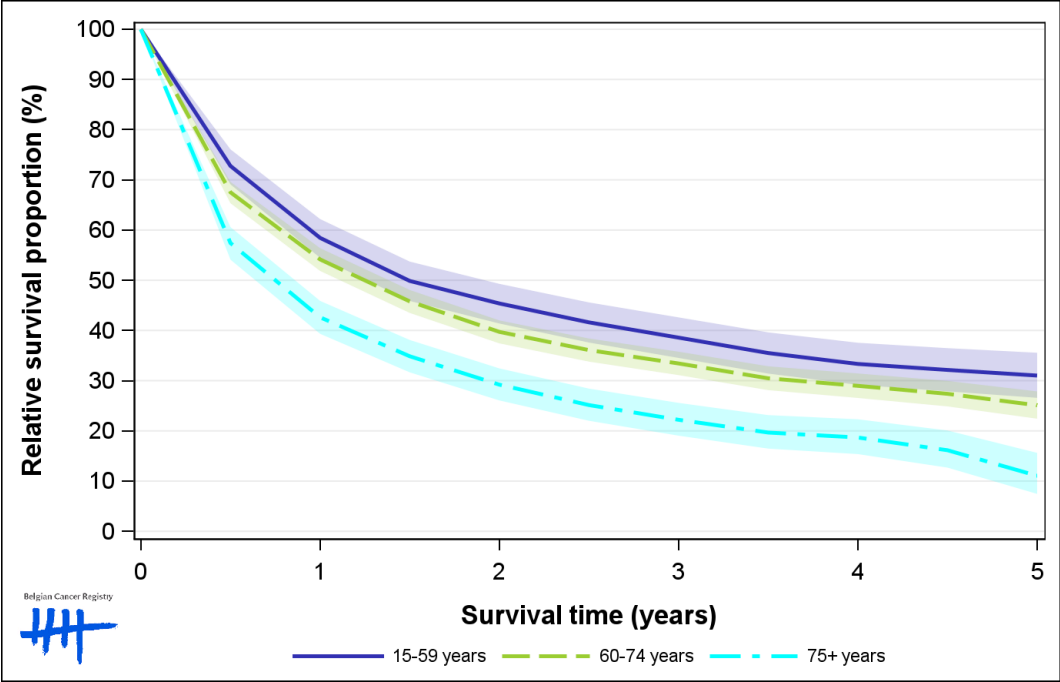
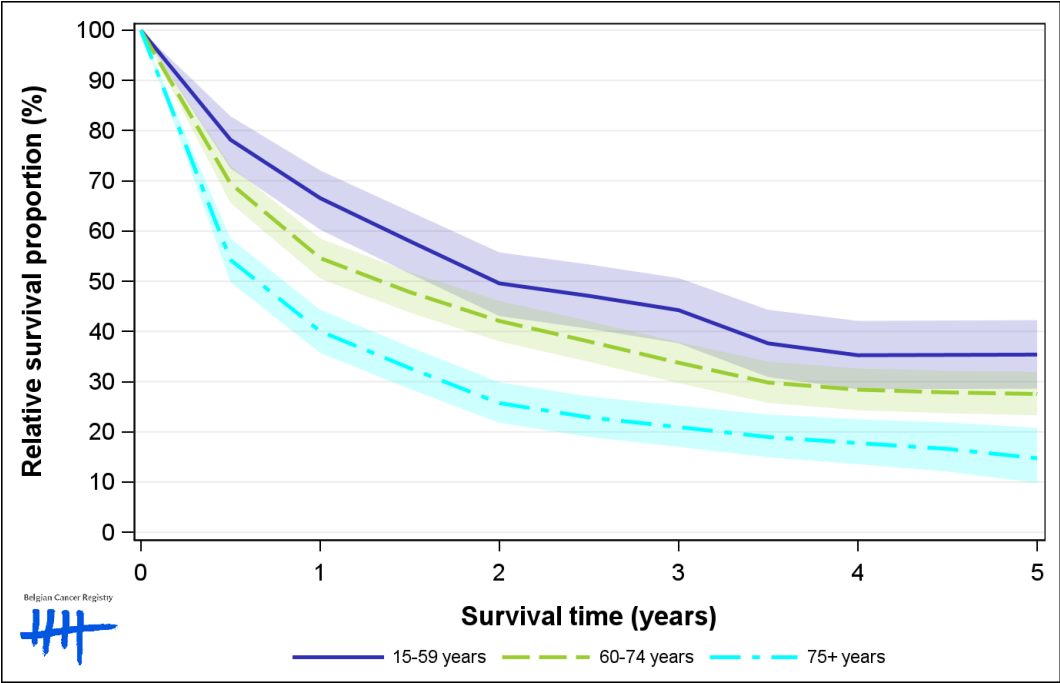
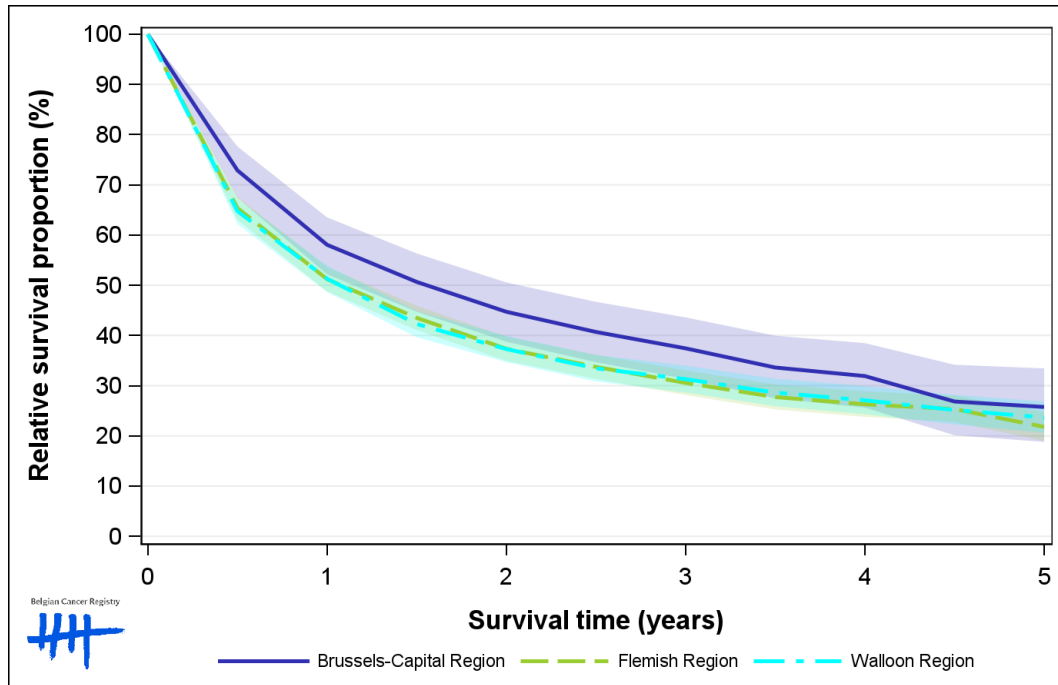


Figure 8: Liver cancer: relative survival proportion by age group in females, Belgium 2015-2019





**Figure 9:** Liver cancer: relative survival proportion by region in males, Belgium 2015-2019



**Figure 10:** Liver cancer: relative survival proportion by region in females, Belgium 2015-2019

