



Belgian Cancer Registry



Cancer Fact Sheet **Colorectal Cancer**

ICD10 : C18-20

**Belgium 2019**

# 1. Cancer Incidence

## 1.1. Number of new diagnoses and incidence rates

**Table 1:** Colorectal Cancer: Average age at diagnosis, number of new cancer diagnoses (N), crude rate (CR), age-standardised incidence rates (ESR and WSR) and cumulative risk by sex and region, 2019

Males	Age (years)	N	CR	ESR	WSR	CRi
<b>Belgium</b>	<b>69.8</b>	<b>4,300</b>	<b>76.4</b>	<b>53.7</b>	<b>36.1</b>	<b>4.16</b>
Brussels-Capital Region	69.2	298	50.3	50.7	33.9	4.32
Flemish Region	70.4	2,548	78.2	50.9	34.2	3.88
Walloon Region	68.9	1,454	81.9	60.4	40.7	4.68

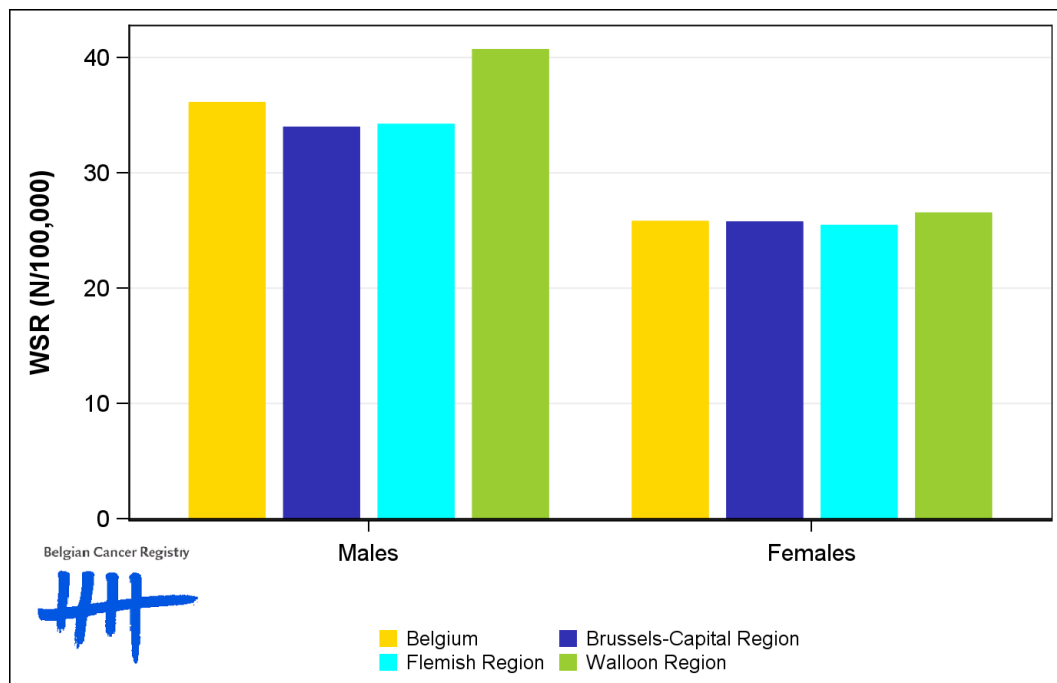
Females	Age (years)	N	CR	ESR	WSR	CRi
<b>Belgium</b>	<b>71.8</b>	<b>3,690</b>	<b>63.6</b>	<b>37.8</b>	<b>25.8</b>	<b>2.88</b>
Brussels-Capital Region	72.2	317	51.5	38.3	25.7	2.82
Flemish Region	72.0	2,183	65.6	37.3	25.4	2.84
Walloon Region	71.3	1,190	64.0	38.8	26.5	2.98

CR=Crude (all ages) Rate (N/100,000 person-years)  
 ESR (1976)=Age-Standardised Rate, using the European Standard Population (N/100,000 person-years)  
 WSR=Age-Standardised Rate, using the World Standard Population (N/100,000 person-years)  
 CRi=Cumulative Risk for 0-74 years (%)

Belgian Cancer Registry



**Figure 1:** Colorectal Cancer: Age-standardised incidence rates by sex and region, 2019



## 1.2. Age-specific incidence rates

**Table 2:** Colorectal Cancer: Age-specific incidence rates, crude rate (CR) and age-standardised incidence rates (ESR and WSR) by sex, Belgium 2019

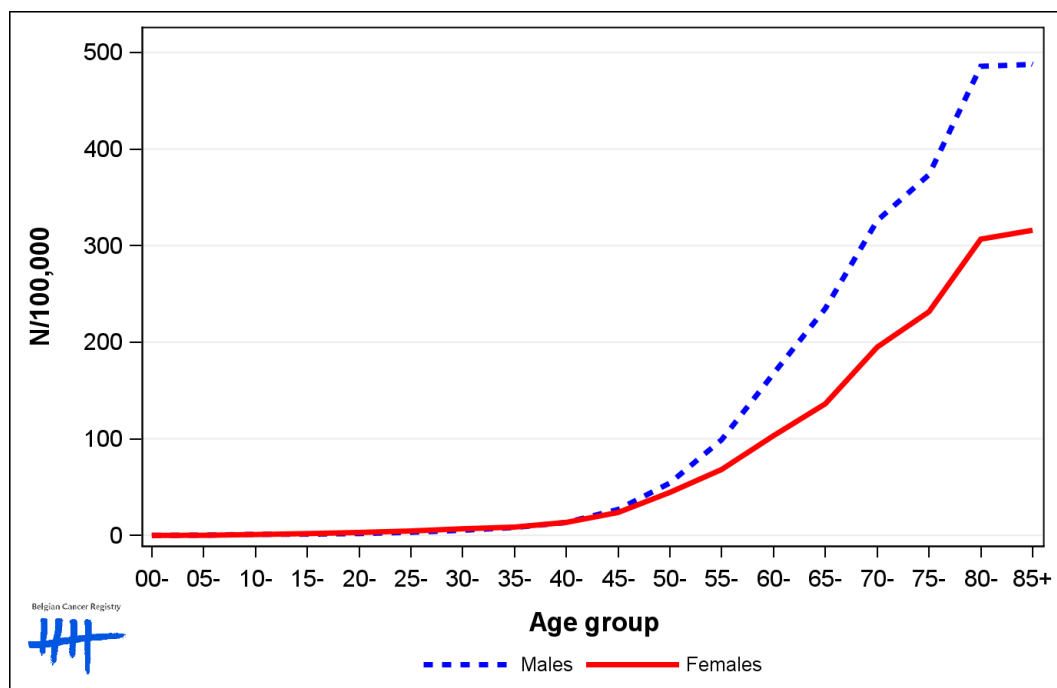
	00-	05-	10-	15-	20-	25-	30-	35-	40-	45-	50-	55-	60-	65-	70-	75-	80-	85+	CR	ESR	WSR
Males	0.0	0.0	0.6	1.6	2.4	3.2	6.3	8.2	13.3	30.8	64.3	82.6	141.5	204.0	290.1	324.9	467.4	447.8	76.4	53.7	36.1
Females	0.0	0.3	1.3	3.3	3.0	4.9	5.7	7.2	12.7	22.4	51.5	58.7	94.1	135.0	184.7	227.6	316.1	309.1	63.6	37.8	25.8

CR=Crude (all ages) Rate (N/100,000 person-years)

ESR (1976)=Age-Standardised Rate, using the European Standard Population (N/100,000 person-years)

WSR=Age-Standardised Rate, using the World Standard Population (N/100,000 person-years)

**Figure 2:** Colorectal Cancer: Age-specific incidence rates by sex, 2015-2019



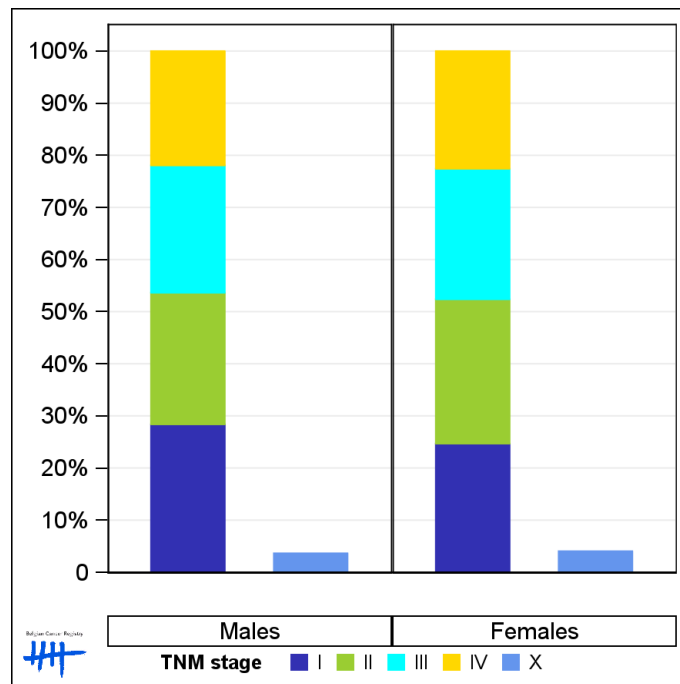
### 1.3. Combined stage

**Table 3:** Colorectal Cancer: Distribution of combined stage by sex, Belgium 2019

	Stage I	Stage II	Stage III	Stage IV	Stage X	Stage NA	Total
<b>Males</b>							
N	1,171	1,042	1,008	904	156	19	4,300
%	27.2	24.2	23.4	21.0	3.6	0.4	100
<b>Females</b>							
N	872	979	885	797	149	8	3,690
%	23.6	26.5	24.0	21.6	4.0	0.2	100

Staging according to the TNM 8th edition (Ref: Brierley JD, Gospodarowicz MK, Wittekind Ch. TNM classification of malignant tumours, UICC 8th edition)  
 Combined TNM stage : compilation of pathological (pTNM) and clinical (cTNM) stage. pTNM prevails over cTNM, except when cTNM stage is IV  
 Stage X: diagnoses with an unknown stage  
 Stage NA: diagnoses with a histological diagnosis where no stage can be evaluated (Not Applicable)

**Figure 3:** Colorectal Cancer: Bar chart of known combined stage by sex, Belgium 2019



## 1.4. Trends in incidence

**Table 4:** Colorectal Cancer: Age-standardised incidence rates (WSR) and average annual percentage change (AAPC) by incidence year, sex and region

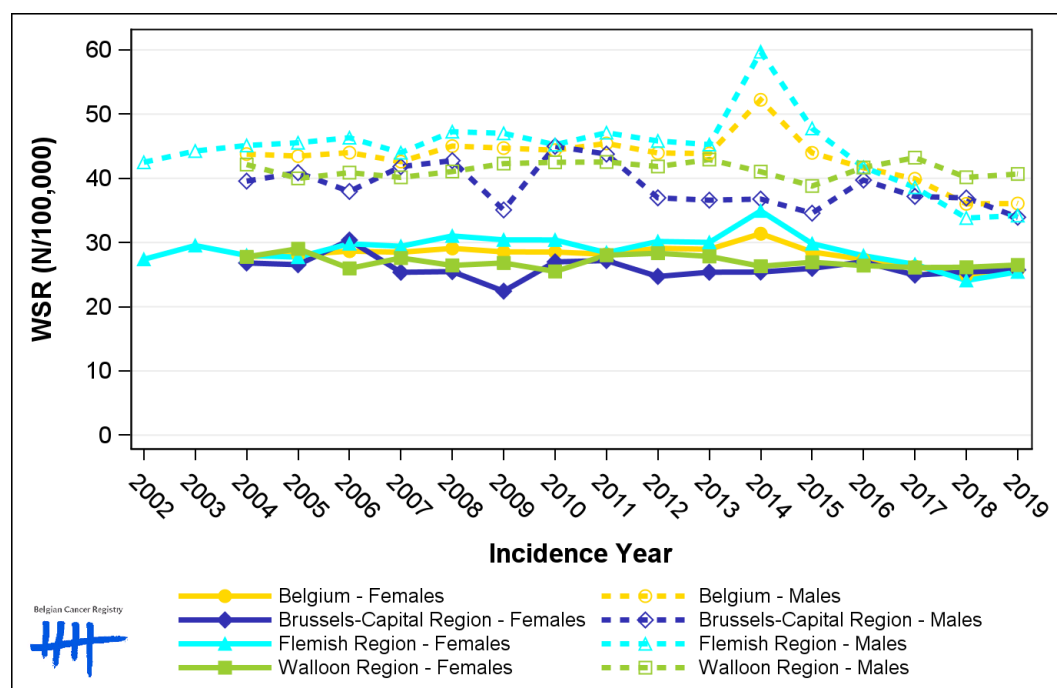
Males	2005	2006	2007	2008	2009	2010	2011	2012	2013	2014	2015	2016	2017	2018	2019	AAPC	95% CI
<b>Belgium</b>	43.5	44.0	42.6	45.0	44.7	44.4	45.4	43.9	43.9	52.2	44.0	41.6	39.9	36.0	36.1	-1.4	[-1.9; -0.8]
Brussels-Capital Region	40.9	38.0	41.8	42.8	35.1	45.0	43.8	37.0	36.6	36.8	34.6	39.7	37.2	37.0	33.9	-1.1	[-2.0; -0.1]
Flemish Region	45.5	46.3	44.0	47.3	47.0	45.2	47.1	45.8	45.3	59.7	47.8	41.7	38.6	33.8	34.2	-2.1	[-3.0; -1.2]
Walloon Region	40.0	40.9	40.2	41.1	42.3	42.5	42.5	41.8	42.9	41.0	38.8	41.7	43.2	40.2	40.7	0.1	[-0.2; 0.5]

Females	2005	2006	2007	2008	2009	2010	2011	2012	2013	2014	2015	2016	2017	2018	2019	AAPC	95% CI
<b>Belgium</b>	28.1	28.7	28.5	29.1	28.5	28.5	28.2	29.1	28.9	31.4	28.5	27.4	26.3	24.9	25.8	-0.9	[-1.2; -0.5]
Brussels-Capital Region	26.6	30.4	25.4	25.5	22.4	27.0	27.2	24.7	25.4	25.4	26.0	27.0	24.9	25.4	25.7	-0.3	[-1.1; 0.5]
Flemish Region	27.7	29.8	29.4	31.0	30.4	30.4	28.4	30.2	30.0	34.9	29.8	28.0	26.6	24.1	25.4	-1.2	[-1.9; -0.6]
Walloon Region	29.0	26.0	27.6	26.4	26.8	25.5	28.0	28.3	27.8	26.3	26.9	26.4	26.1	26.1	26.5	-0.3	[-0.7; 0.2]

WSR=Age-Standardised Rate, using the World Standard Population (N/100,000 person-years)  
 AAPC = Average Annual Percentage Change over the 2005-2019 period

**Figure 4:** Colorectal Cancer: Age-standardised incidence rates (WSR) by incidence year, sex and region



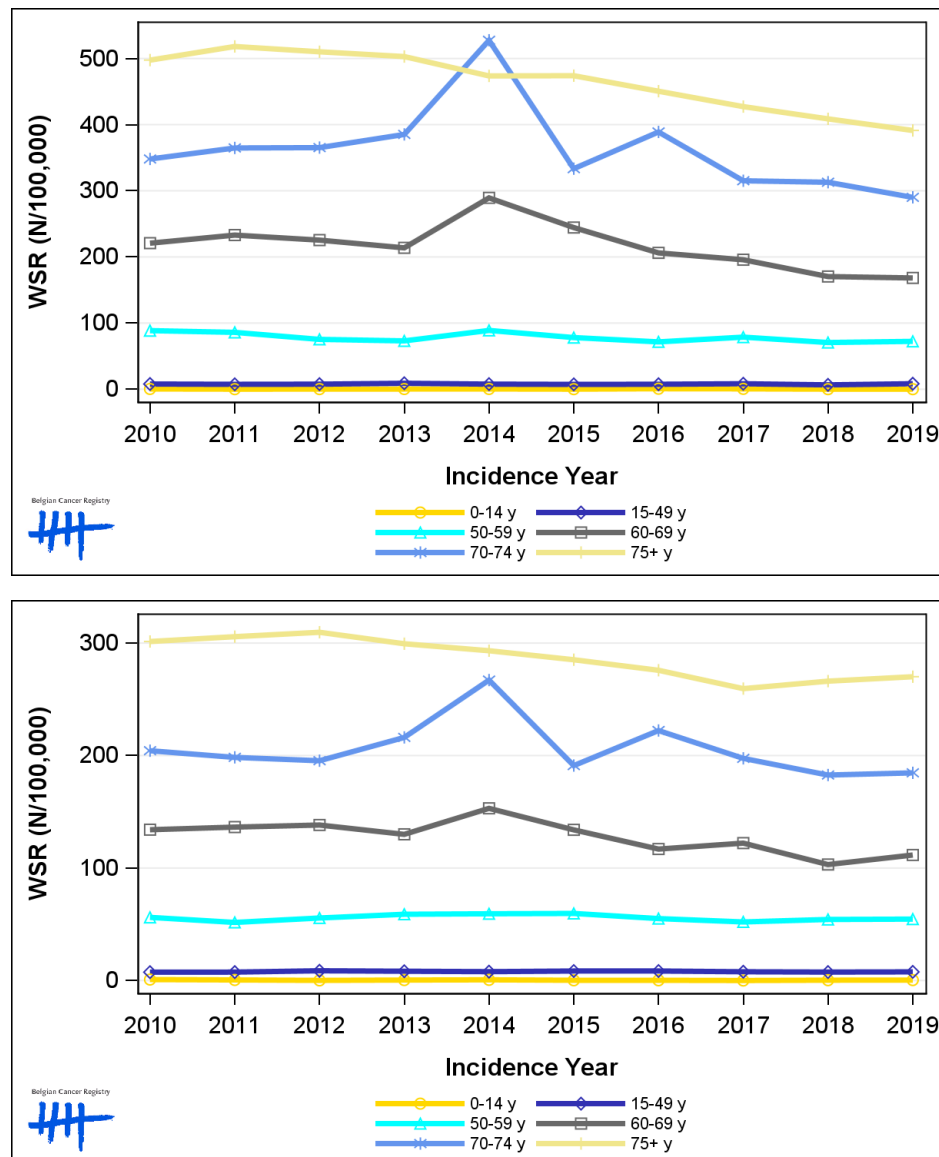
## 1.5. Incidence by broad age groups

**Table 5:** Colorectal Cancer: Number of new diagnoses and age-standardised incidence rates (WSR) by broad age groups and incidence year by sex, Belgium

	N										WSR									
	2010	2011	2012	2013	2014	2015	2016	2017	2018	2019	2010	2011	2012	2013	2014	2015	2016	2017	2018	2019
<b>Males</b>																				
All ages	4,581	4,785	4,730	4,792	5,587	4,908	4,744	4,577	4,293	4,300	44.4	45.4	43.9	43.9	52.2	44.0	41.6	39.9	36.0	36.1
0-14 y	5	2	3	4	5	2	9	7	2	2	0.5	0.2	0.3	0.4	0.5	0.2	0.8	0.6	0.2	0.2
15-49 y	245	231	240	276	242	223	230	248	197	249	7.9	7.5	7.7	9.1	7.8	7.4	7.6	8.3	6.6	8.4
50-59 y	656	647	577	567	702	630	584	645	577	588	88.7	86.0	75.4	73.1	88.9	78.2	71.6	78.8	70.7	72.4
60-69 y	1,173	1,278	1,293	1,273	1,775	1,513	1,312	1,257	1,106	1,104	220.8	233.1	225.5	213.8	289.3	244.5	206.2	195.8	170.4	168.3
70-74 y	721	749	727	751	1,030	664	799	707	749	725	348.1	364.8	365.3	385.2	527.5	333.5	389.0	315.2	312.9	290.1
75+ y	1,781	1,878	1,890	1,921	1,833	1,876	1,810	1,713	1,662	1,632	497.6	518.2	510.2	503.0	473.7	474.0	450.6	427.3	408.8	391.3
<b>Females</b>																				
All ages	3,736	3,754	3,892	3,885	4,122	3,842	3,761	3,646	3,580	3,690	28.5	28.2	29.1	28.9	31.4	28.5	27.4	26.3	24.9	25.8
0-14 y	9	6	2	5	7	3	3	1	4	5	0.9	0.6	0.2	0.5	0.7	0.3	0.3	<0.1	0.4	0.5
15-49 y	222	224	259	244	232	246	248	226	218	218	7.5	7.6	8.7	8.3	8.0	8.5	8.5	7.9	7.6	7.8
50-59 y	418	389	427	457	470	479	444	425	435	436	56.2	51.7	55.6	59.0	59.4	59.7	55.1	52.1	54.3	54.7
60-69 y	757	792	838	815	983	865	782	823	700	767	134.1	136.5	138.3	130.0	153.1	134.0	116.9	122.2	103.2	111.6
70-74 y	503	482	458	494	606	437	522	503	494	520	204.3	198.4	195.5	216.1	267.1	191.1	222.3	197.5	182.7	184.7
75+ y	1,827	1,861	1,908	1,870	1,824	1,812	1,762	1,668	1,729	1,744	301.4	305.7	309.6	299.4	293.2	285.2	275.9	259.6	266.2	270.1

N=Number of invasive tumours  
WSR=Age-Standardised Rate, using the World Standard Population (N/100,000 person-years)

**Figure 5:** Colorectal Cancer: Age-standardised incidence rates (WSR) versus incidence year by broad age groups for males (top) and females (bottom), Belgium

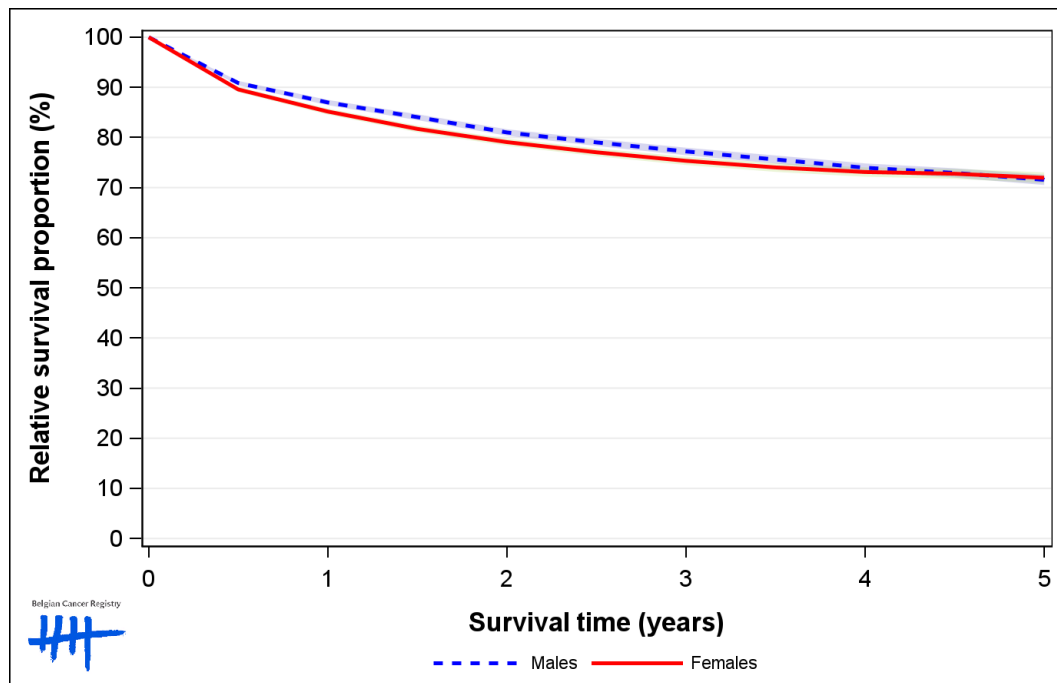


## 2. Relative survival

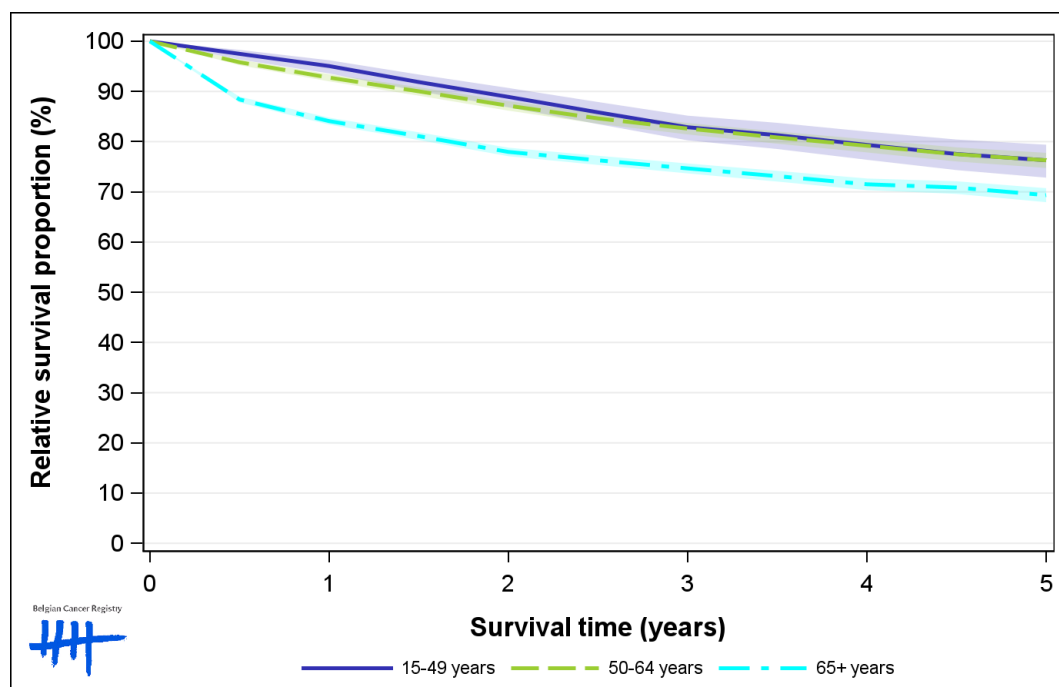
**Table 6:** Colorectal Cancer: 5-year relative survival proportion by sex, age group and region, Belgium 2015-2019

	5-year relative survival 2015-2019 (%)					
	Males			Females		
	N at risk	estimate	95% CI	N at risk	estimate	95% CI
<b>Overall</b>	22,079	71.6	[70.5, 72.6]	18,014	71.9	[70.8, 72.9]
<b>Age group</b>						
15-49 years	1,115	76.2	[72.8, 79.3]	1,138	78.6	[75.6, 81.4]
50-64 years	5,719	76.2	[74.7, 77.7]	3,921	79.6	[77.9, 81.1]
65+ years	15,249	69.4	[68.0, 70.7]	12,958	68.7	[67.2, 70.1]
<b>Region</b>						
Brussels-Capital Region	1,514	67.6	[63.5, 71.5]	1,446	67.4	[63.3, 71.4]
Flemish Region	13,665	74.1	[72.8, 75.3]	10,872	74.9	[73.5, 76.2]
Walloon Region	6,901	67.1	[65.1, 69.0]	5,696	67.1	[65.1, 69.1]

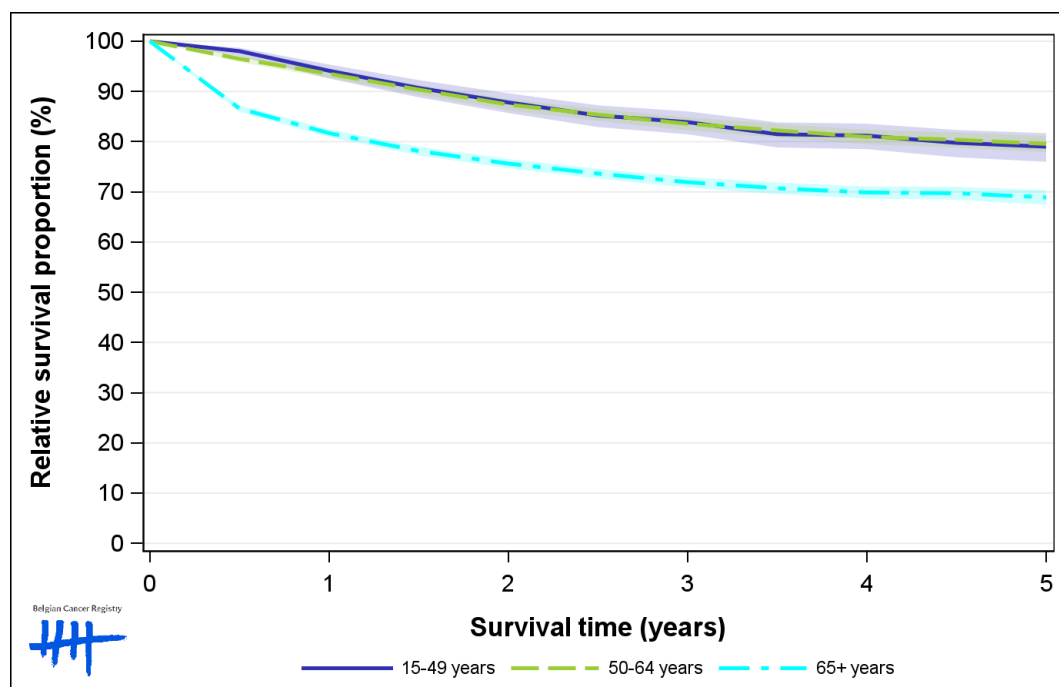
**Figure 6:** Colorectal Cancer: relative survival proportion by sex, Belgium 2015-2019



**Figure 7:** Colorectal Cancer: relative survival proportion by age group in males, Belgium 2015-2019

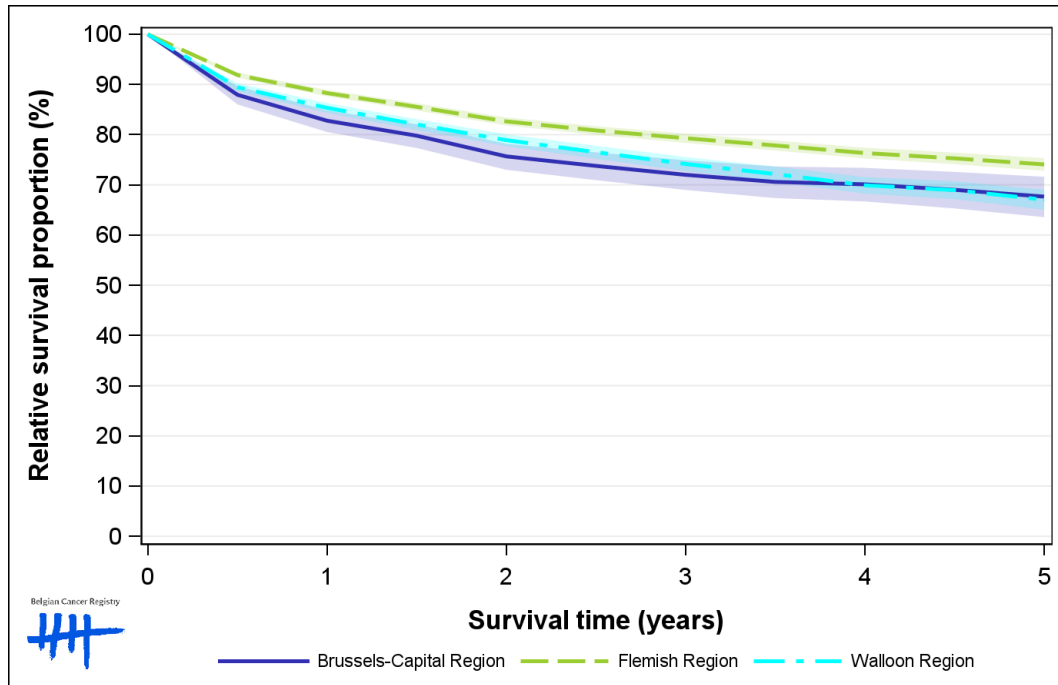


**Figure 8:** Colorectal Cancer: relative survival proportion by age group in females, Belgium 2015-2019





**Figure 9:** Colorectal Cancer: relative survival proportion by region in males, Belgium 2015-2019



**Figure 10:** Colorectal Cancer: relative survival proportion by region in females, Belgium 2015-2019

