



Belgian Cancer Registry



Cancer Fact Sheet **Central nervous system**

ICD10 : C71-C72

**Belgium 2019**

# 1. Cancer Incidence

## 1.1. Number of new diagnoses and incidence rates

**Table 1:** Central Nervous System Cancers: Average age at diagnosis, number of new cancer diagnoses (N), crude rate (CR), age-standardised incidence rates (ESR and WSR) and cumulative risk by sex and region, 2019

Males	Age (years)	N	CR	ESR	WSR	CRi
<b>Belgium</b>	<b>58.9</b>	<b>542</b>	<b>9.6</b>	<b>8.0</b>	<b>6.3</b>	<b>0.67</b>
Brussels-Capital Region	57.3	47	7.9	8.2	6.4	0.72
Flemish Region	59.7	337	10.3	8.2	6.4	0.71
Walloon Region	57.6	158	8.9	7.6	6.1	0.58

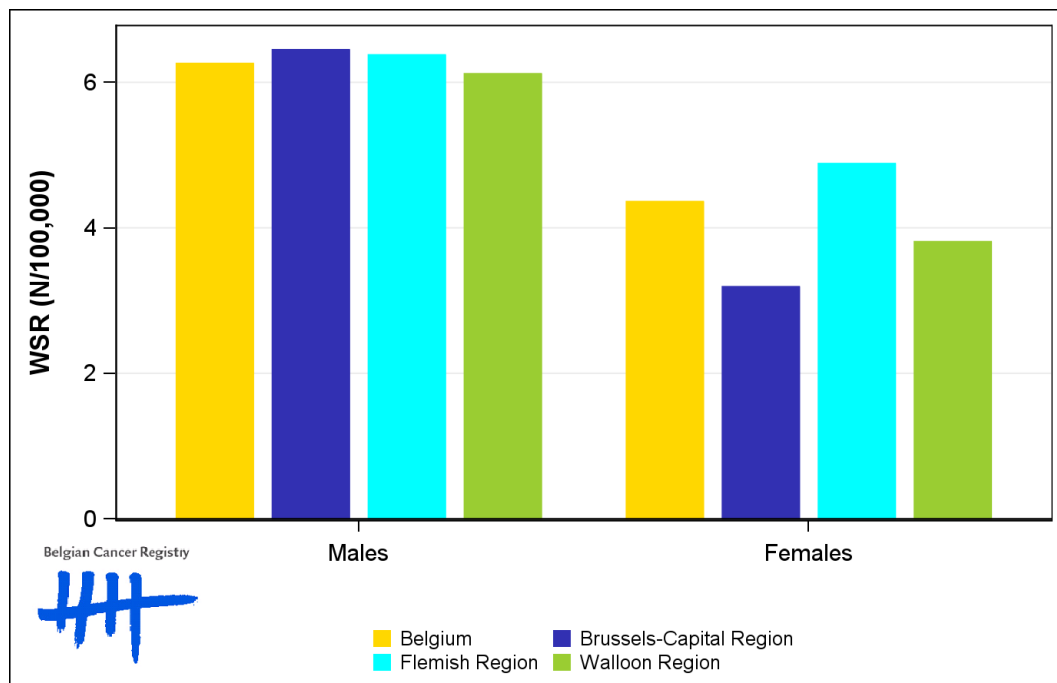
Females	Age (years)	N	CR	ESR	WSR	CRi
<b>Belgium</b>	<b>59.6</b>	<b>393</b>	<b>6.8</b>	<b>5.3</b>	<b>4.4</b>	<b>0.44</b>
Brussels-Capital Region	58.1	30	4.9	4.1	3.2	0.27
Flemish Region	59.5	248	7.4	5.7	4.9	0.47
Walloon Region	60.3	115	6.2	4.9	3.8	0.42

CR=Crude (all ages) Rate (N/100,000 person-years)  
 ESR (1976)=Age-Standardised Rate, using the European Standard Population (N/100,000 person-years)  
 WSR=Age-Standardised Rate, using the World Standard Population (N/100,000 person-years)  
 CRi=Cumulative Risk for 0-74 years (%)

Belgian Cancer Registry



**Figure 1:** Central Nervous System Cancers: Age-standardised incidence rates by sex and region, 2019



## 1.2. Age-specific incidence rates

**Table 2:** Central Nervous System Cancers: Age-specific incidence rates, crude rate (CR) and age-standardised incidence rates (ESR and WSR) by sex, Belgium 2019

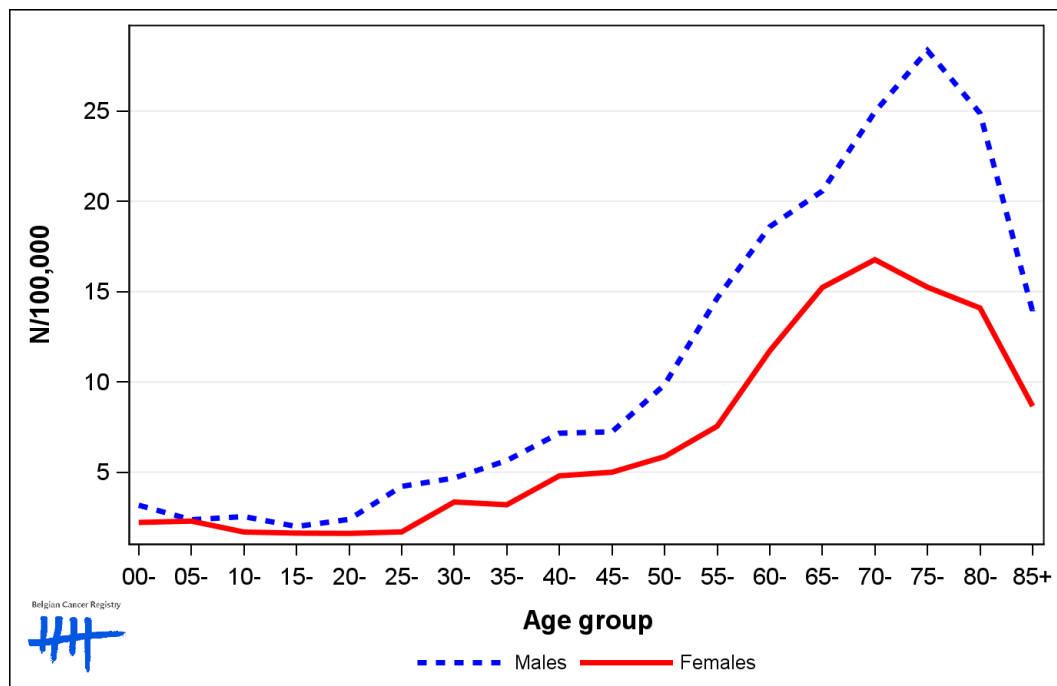
	00-	05-	10-	15-	20-	25-	30-	35-	40-	45-	50-	55-	60-	65-	70-	75-	80-	85+	CR	ESR	WSR
Males	3.2	0.6	1.5	1.6	0.9	2.4	4.4	5.9	7.9	8.1	11.1	13.6	22.3	21.8	28.8	29.6	24.4	13.0	9.6	8.0	6.3
Females	2.7	1.8	0.9	2.0	2.7	2.2	4.4	3.7	5.5	3.4	6.6	5.6	10.5	16.4	19.2	18.4	19.7	10.5	6.8	5.3	4.4

CR=Crude (all ages) Rate (N/100,000 person-years)

ESR (1976)=Age-Standardised Rate, using the European Standard Population (N/100,000 person-years)

WSR=Age-Standardised Rate, using the World Standard Population (N/100,000 person-years)

**Figure 2:** Central Nervous System Cancers: Age-specific incidence rates by sex, 2015-2019



### 1.3. Trends in incidence

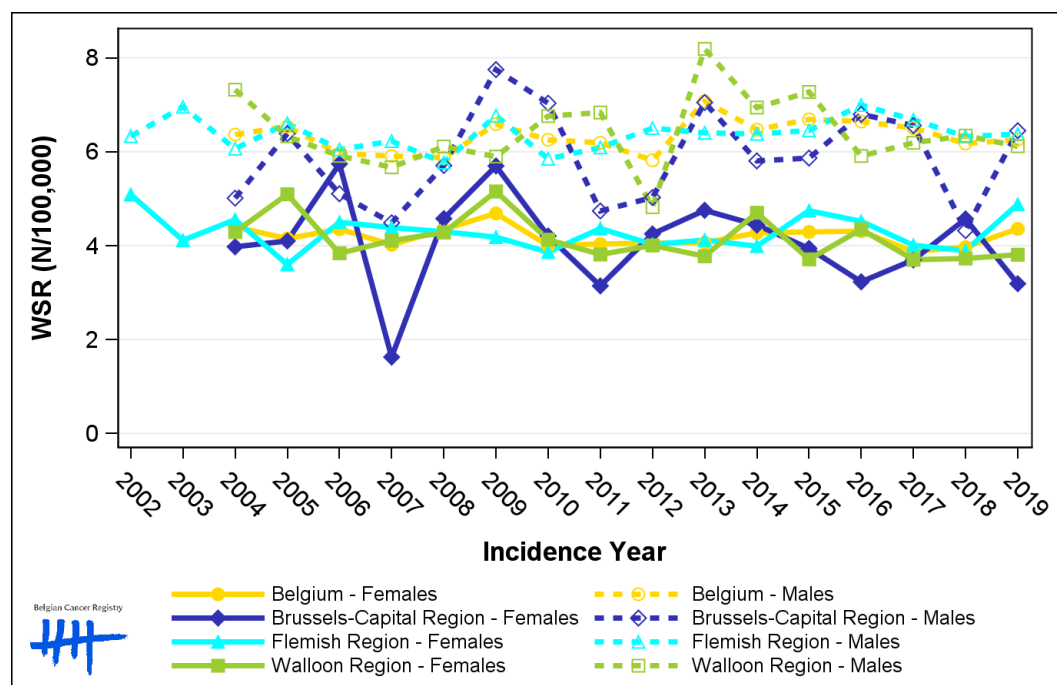
**Table 3:** Central Nervous System Cancers: Age-standardised incidence rates (WSR) and average annual percentage change (AAPC) by incidence year, sex and region

Males	2005	2006	2007	2008	2009	2010	2011	2012	2013	2014	2015	2016	2017	2018	2019	AAPC	95% CI
<b>Belgium</b>	6.5	6.0	5.9	5.9	6.6	6.3	6.2	5.8	7.1	6.5	6.7	6.6	6.5	6.2	6.3	0.4	[-0.3; 1.1]
Brussels-Capital Region	6.4	5.1	4.5	5.7	7.8	7.0	4.7	5.0	7.1	5.8	5.9	6.8	6.6	4.3	6.4	0.3	[-2.1; 2.7]
Flemish Region	6.6	6.0	6.2	5.8	6.8	5.8	6.1	6.5	6.4	6.4	6.5	7.0	6.7	6.3	6.4	0.4	[-0.2; 1.1]
Walloon Region	6.3	5.9	5.7	6.1	5.9	6.8	6.8	4.8	8.2	6.9	7.3	5.9	6.2	6.3	6.1	0.5	[-1.1; 2.1]

Females	2005	2006	2007	2008	2009	2010	2011	2012	2013	2014	2015	2016	2017	2018	2019	AAPC	95% CI
<b>Belgium</b>	4.2	4.4	4.0	4.3	4.7	4.0	4.0	4.1	4.1	4.3	4.3	4.3	3.9	4.0	4.4	-0.2	[-0.9; 0.5]
Brussels-Capital Region	4.1	5.7	1.6	4.6	5.7	4.2	3.1	4.3	4.8	4.4	3.9	3.2	3.7	4.6	3.2	-0.4	[-4.3; 3.8]
Flemish Region	3.6	4.5	4.4	4.3	4.2	3.9	4.4	4.0	4.1	4.0	4.7	4.5	4.0	3.9	4.9	0.5	[-0.6; 1.6]
Walloon Region	5.1	3.8	4.1	4.3	5.2	4.1	3.8	4.0	3.8	4.7	3.7	4.3	3.7	3.7	3.8	-1.2	[-2.5; 0.1]

WSR=Age-Standardised Rate, using the World Standard Population (N/100,000 person-years)  
 AAPC = Average Annual Percentage Change over the 2005-2019 period

**Figure 3:** Central Nervous System Cancers: Age-standardised incidence rates (WSR) by incidence year, sex and region



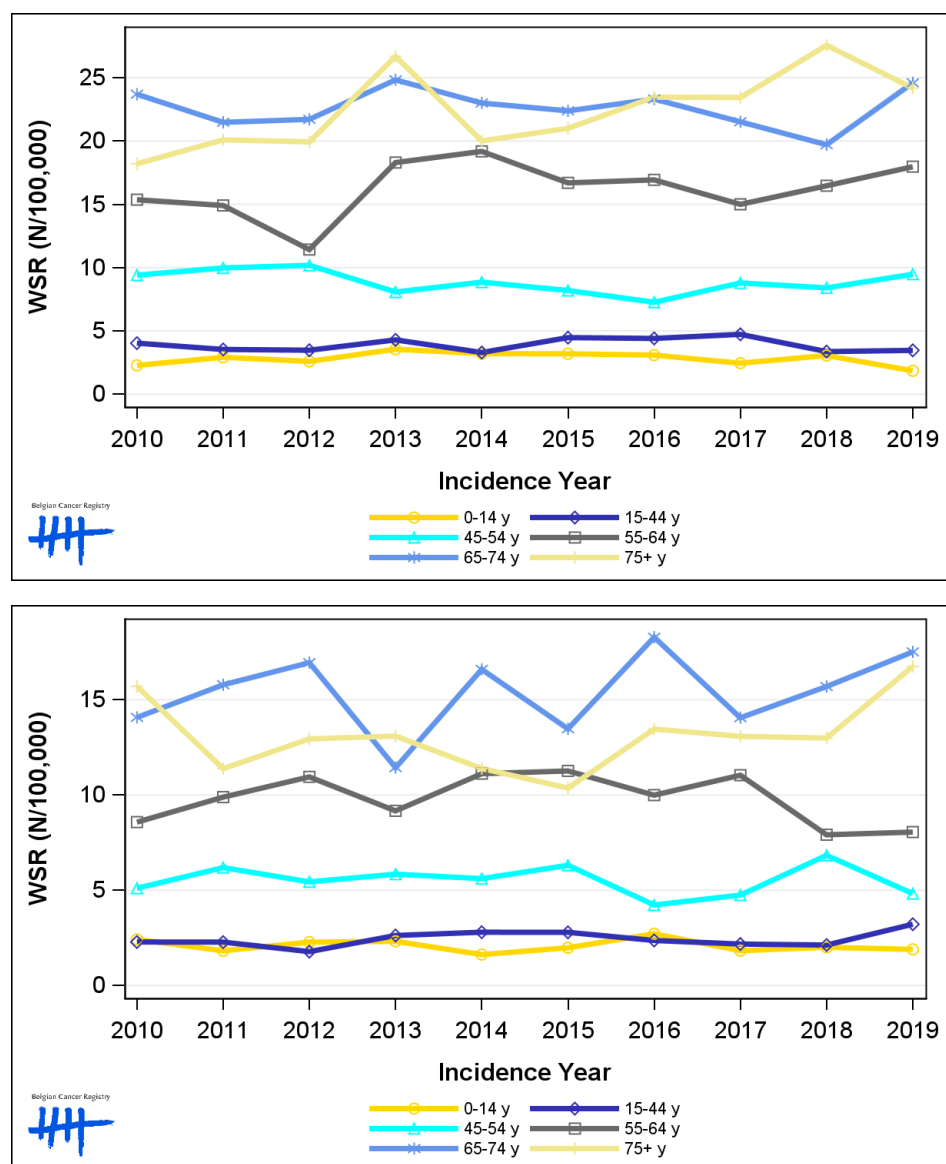
## 1.4. Incidence by broad age groups

**Table 4:** Central Nervous System Cancers: Number of new diagnoses and age-standardised incidence rates (WSR) by broad age groups and incidence year by sex, Belgium

	N										WSR									
	2010	2011	2012	2013	2014	2015	2016	2017	2018	2019	2010	2011	2012	2013	2014	2015	2016	2017	2018	2019
<b>Males</b>																				
All ages	461	459	438	537	499	507	523	513	513	542	6.3	6.2	5.8	7.1	6.5	6.7	6.6	6.5	6.2	6.3
0-14 y	21	28	25	34	31	30	31	24	30	17	2.3	2.9	2.6	3.6	3.2	3.2	3.1	2.5	3.1	1.9
15-44 y	94	84	81	99	78	102	102	107	79	84	4.0	3.5	3.5	4.3	3.3	4.5	4.4	4.7	3.4	3.5
45-54 y	76	82	84	67	73	68	61	71	69	77	9.4	10.0	10.2	8.1	8.9	8.2	7.3	8.8	8.4	9.5
55-64 y	100	99	76	123	130	116	119	108	121	132	15.4	14.9	11.4	18.3	19.2	16.7	16.9	15.0	16.5	18.0
65-74 y	105	95	98	115	109	109	117	112	107	137	23.7	21.5	21.7	24.8	23.0	22.4	23.3	21.5	19.7	24.6
75+ y	65	71	74	99	78	82	93	91	107	95	18.2	20.1	19.9	26.7	20.0	21.0	23.5	23.4	27.6	24.2
<b>Females</b>																				
All ages	327	329	340	321	354	345	366	339	350	393	4.0	4.0	4.1	4.1	4.3	4.3	4.3	3.9	4.0	4.4
0-14 y	21	16	21	21	15	18	26	17	19	17	2.4	1.8	2.3	2.3	1.6	2.0	2.7	1.8	2.0	1.9
15-44 y	51	53	42	57	63	63	56	49	50	73	2.3	2.3	1.8	2.6	2.8	2.8	2.4	2.2	2.1	3.2
45-54 y	41	50	44	47	45	51	33	38	54	39	5.1	6.2	5.4	5.8	5.6	6.3	4.2	4.8	6.8	4.8
55-64 y	57	67	75	63	77	80	71	80	59	60	8.6	9.9	11.0	9.2	11.1	11.3	10.0	11.0	7.9	8.1
65-74 y	70	78	85	60	87	72	101	80	93	106	14.1	15.8	16.9	11.4	16.6	13.5	18.3	14.1	15.7	17.5
75+ y	87	65	73	73	67	61	79	75	75	98	15.7	11.4	12.9	13.1	11.4	10.4	13.5	13.1	13.0	16.8

N=Number of invasive tumours  
WSR=Age-Standardised Rate, using the World Standard Population (N/100,000 person-years)

**Figure 4:** Central Nervous System Cancers: Age-standardised incidence rates (WSR) versus incidence year by broad age groups for males (top) and females (bottom), Belgium

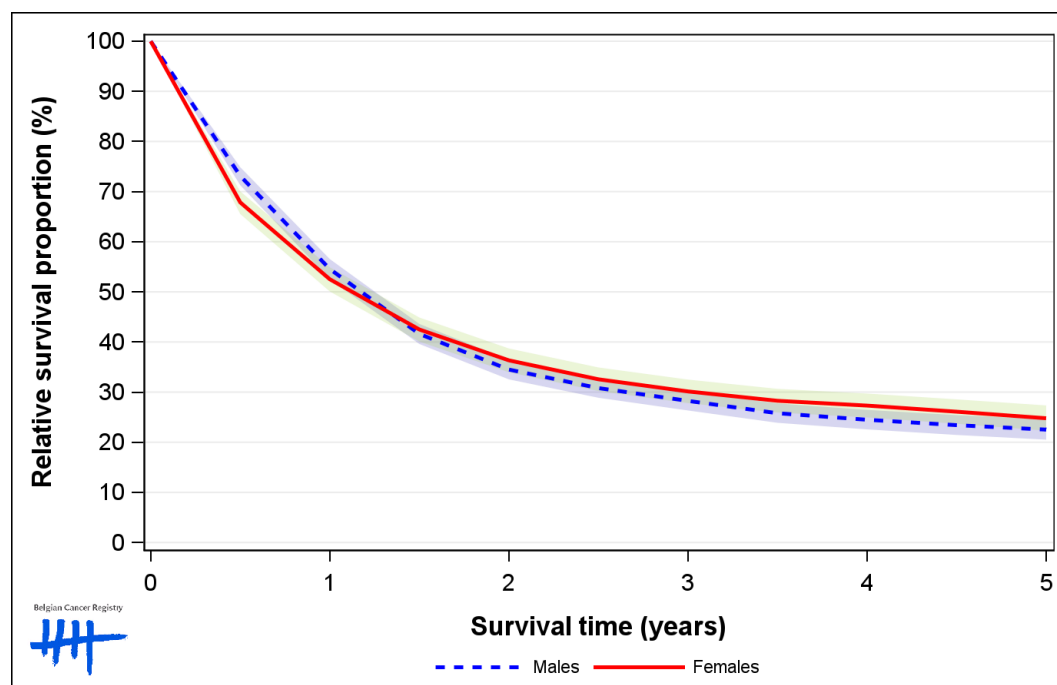


## 2. Relative survival

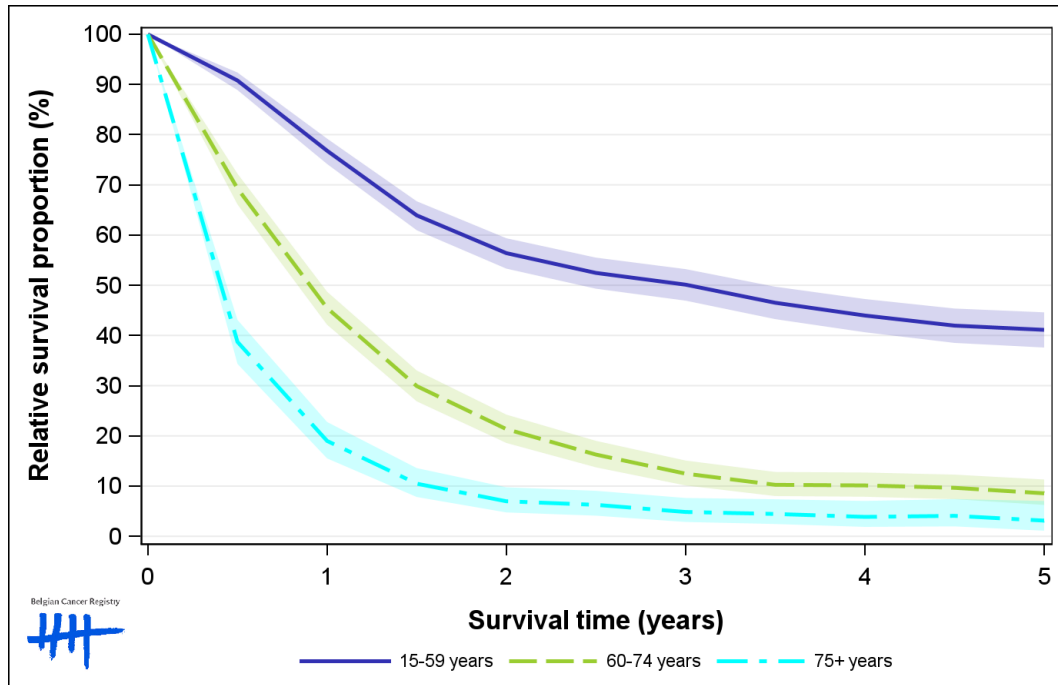
**Table 5:** Central Nervous System Cancers: 5-year relative survival proportion by sex, age group and region, Belgium 2015-2019

	5-year relative survival 2015-2019 (%)					
	Males			Females		
	N at risk	estimate	95% CI	N at risk	estimate	95% CI
<b>Overall</b>	2,449	22.1	[20.1, 24.1]	1,690	24.1	[21.7, 26.6]
<b>Age group</b>						
15-59 years	1,090	40.7	[37.2, 44.2]	651	46.2	[41.6, 50.7]
60-74 years	892	8.4	[6.2, 11.1]	652	14.2	[11.0, 17.7]
75+ years	467	2.9	[1.2, 6.1]	387	3.2	[1.3, 6.8]
<b>Region</b>						
Brussels-Capital Region	179	34.3	[26.6, 42.1]	137	32.6	[23.6, 42.0]
Flemish Region	1,542	21.6	[19.1, 24.2]	1,048	23.8	[20.8, 27.0]
Walloon Region	728	20.2	[16.8, 23.8]	505	22.2	[18.1, 26.7]

**Figure 5:** Central Nervous System Cancers: relative survival proportion by sex, Belgium 2015-2019



**Figure 6:** Central Nervous System Cancers: relative survival proportion by age group in males, Belgium 2015-2019



**Figure 7:** Central Nervous System Cancers: relative survival proportion by age group in females, Belgium 2015-2019

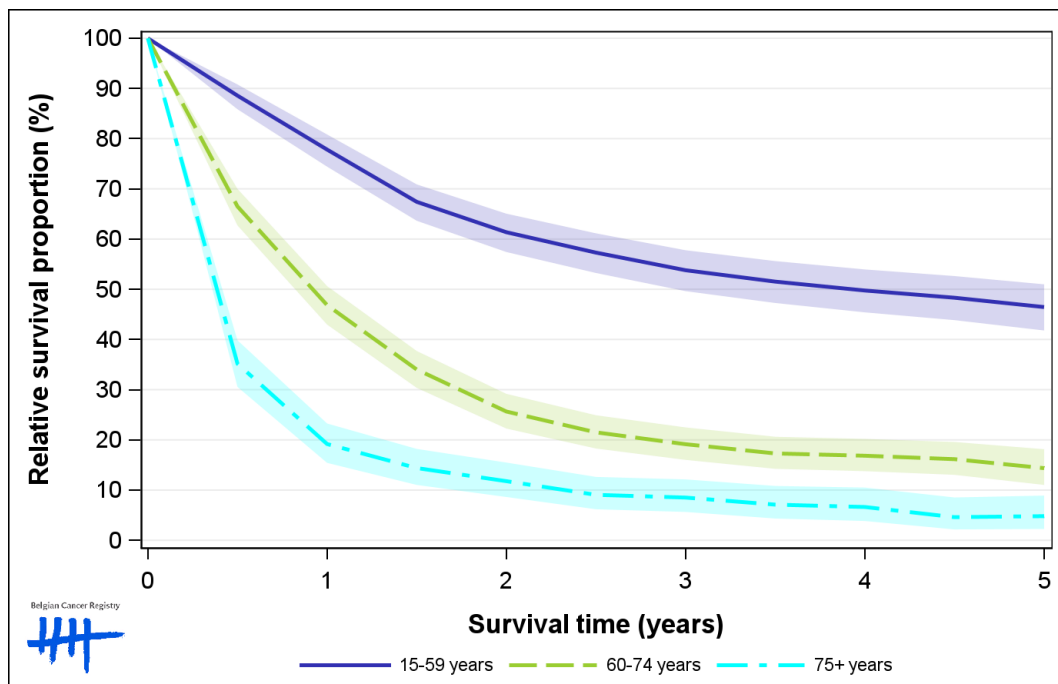


Figure 8: Central Nervous System Cancers: relative survival proportion by region in males, Belgium 2015-2019

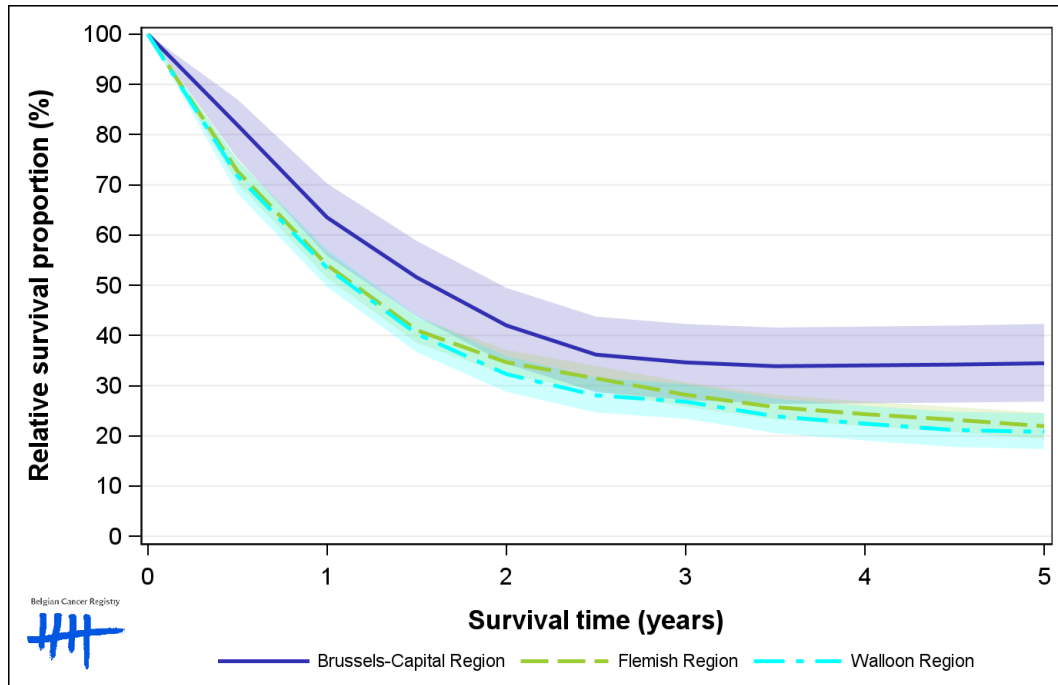


Figure 9: Central Nervous System Cancers: relative survival proportion by region in females, Belgium 2015-2019

