

Belgian Cancer Registry



Cancer Fact Sheet **Bladder Cancer**

ICD10 : C67

Belgium 2019

1. Cancer Incidence

1.1. Number of new diagnoses and incidence rates

Table 1: Bladder Cancer: Average age at diagnosis, number of new cancer diagnoses (N), crude rate (CR), age-standardised incidence rates (ESR and WSR) and cumulative risk by sex and region, 2019

Males	Age (years)	N	CR	ESR	WSR	CRi
Belgium	74.1	1,927	34.2	22.3	14.1	1.59
Brussels-Capital Region	74.3	123	20.8	19.8	12.3	1.27
Flemish Region	74.6	1,140	35.0	20.9	13.2	1.46
Walloon Region	73.1	664	37.4	25.9	16.5	1.93

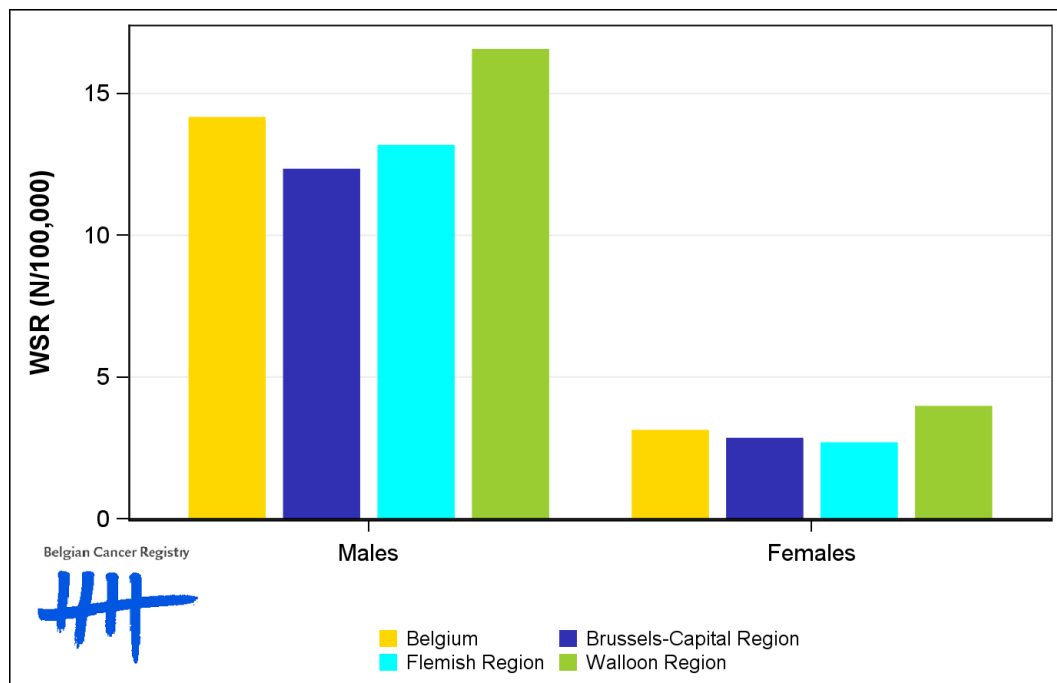
Females	Age (years)	N	CR	ESR	WSR	CRi
Belgium	74.7	511	8.8	4.7	3.1	0.36
Brussels-Capital Region	74.2	37	6.0	4.3	2.8	0.33
Flemish Region	76.1	287	8.6	4.2	2.7	0.30
Walloon Region	72.7	187	10.1	5.8	4.0	0.47

CR=Crude (all ages) Rate (N/100,000 person-years)
 ESR (1976)=Age-Standardised Rate, using the European Standard Population (N/100,000 person-years)
 WSR=Age-Standardised Rate, using the World Standard Population (N/100,000 person-years)
 CRi=Cumulative Risk for 0-74 years (%)

Belgian Cancer Registry



Figure 1: Bladder Cancer: Age-standardised incidence rates by sex and region, 2019



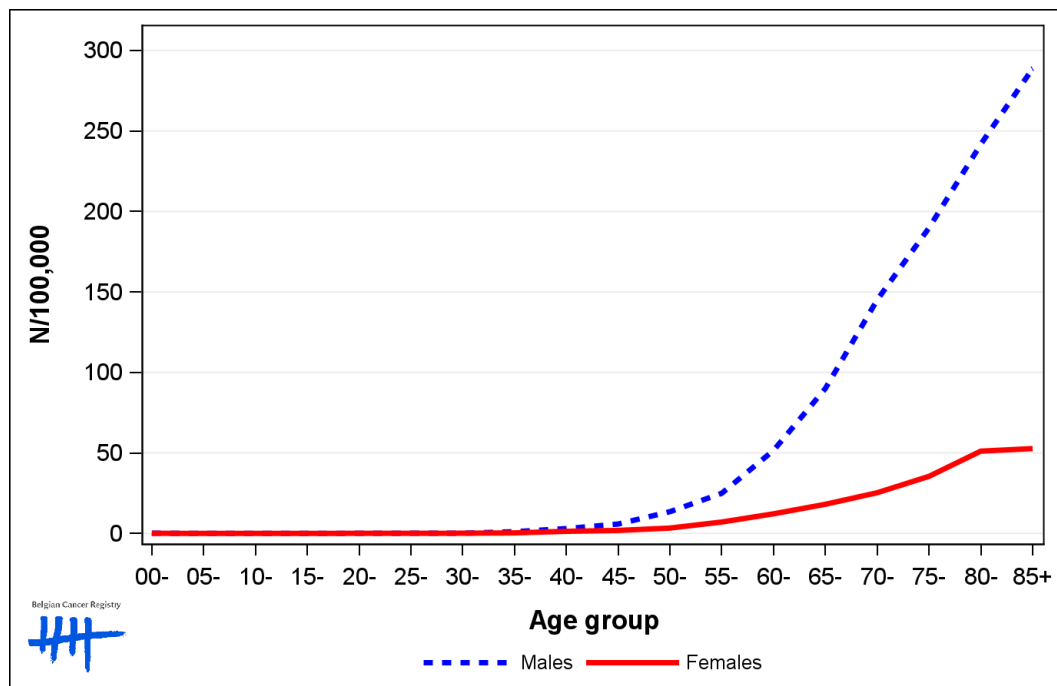
1.2. Age-specific incidence rates

Table 2: Bladder Cancer: Age-specific incidence rates, crude rate (CR) and age-standardised incidence rates (ESR and WSR) by sex, Belgium 2019

	00-	05-	10-	15-	20-	25-	30-	35-	40-	45-	50-	55-	60-	65-	70-	75-	80-	85+	CR	ESR	WSR
Males	0.0	0.0	0.0	0.0	0.3	0.5	0.0	1.1	2.4	5.9	12.1	20.2	49.4	87.4	141.6	187.0	248.6	312.1	34.2	22.3	14.1
Females	0.0	0.0	0.0	0.0	0.0	0.0	0.0	0.3	1.4	2.9	2.3	5.6	14.2	18.9	27.0	30.6	55.8	49.1	8.8	4.7	3.1

CR=Crude (all ages) Rate (N/100,000 person-years)
 ESR (1976)=Age-Standardised Rate, using the European Standard Population (N/100,000 person-years)
 WSR=Age-Standardised Rate, using the World Standard Population (N/100,000 person-years)

Figure 2: Bladder Cancer: Age-specific incidence rates by sex, 2015-2019



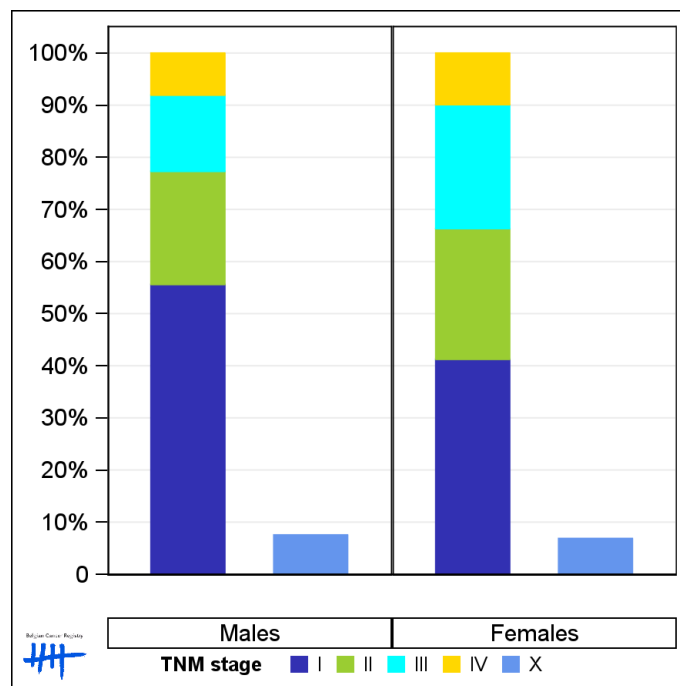
1.3. Combined stage

Table 3: Bladder Cancer: Distribution of combined stage by sex, Belgium 2019

	Stage I	Stage II	Stage III	Stage IV	Stage X	Stage NA	Total
Males							
N	989	386	260	143	145	4	1,927
%	51.3	20.0	13.5	7.4	7.5	0.2	100
Females							
N	196	119	113	47	35	1	511
%	38.4	23.3	22.1	9.2	6.8	0.2	100

Staging according to the TNM 8th edition (Ref: Brierley JD, Gospodarowicz MK, Wittekind Ch. TNM classification of malignant tumours, UICC 8th edition)
 Combined TNM stage : compilation of pathological (pTNM) and clinical (cTNM) stage. pTNM prevails over cTNM, except when cTNM stage is IV
 Stage X: diagnoses with an unknown stage
 Stage NA: diagnoses with a histological diagnosis where no stage can be evaluated (Not Applicable)

Figure 3: Bladder Cancer: Bar chart of known combined stage by sex, Belgium 2019



1.4. Trends in incidence

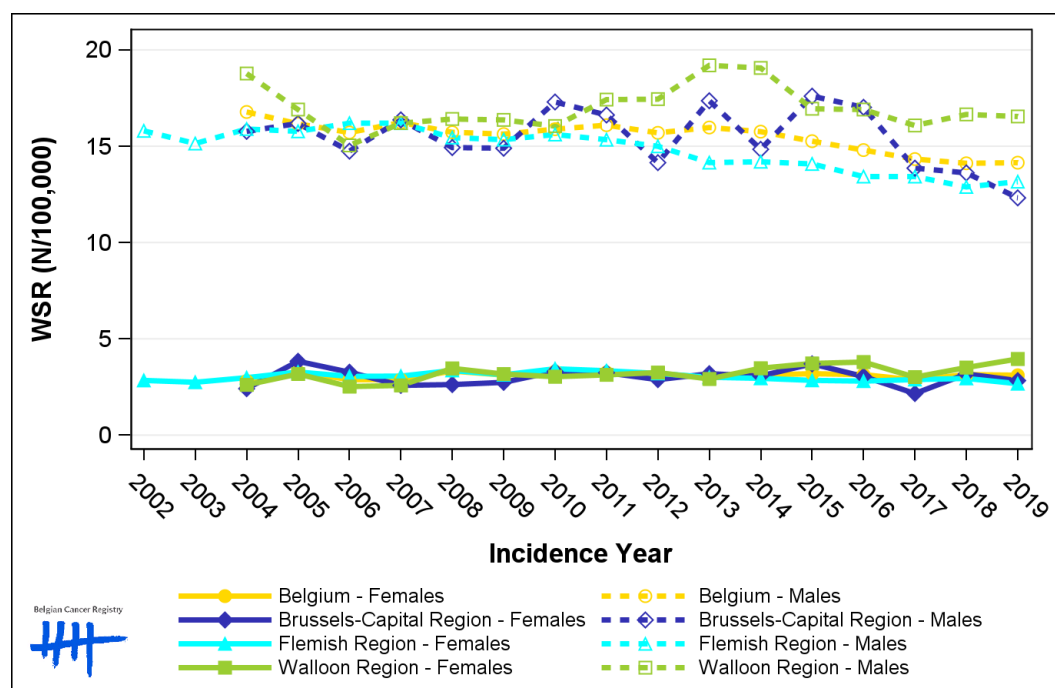
Table 4: Bladder Cancer: Age-standardised incidence rates (WSR) and average annual percentage change (AAPC) by incidence year, sex and region

Males	2005	2006	2007	2008	2009	2010	2011	2012	2013	2014	2015	2016	2017	2018	2019	AAPC	95% CI
Belgium	16.2	15.7	16.2	15.7	15.6	15.9	16.1	15.7	16.0	15.8	15.3	14.8	14.3	14.1	14.1	-1.0	[-1.1; -0.8]
Brussels-Capital Region	16.2	14.7	16.4	14.9	14.9	17.3	16.6	14.1	17.4	14.8	17.6	17.0	13.9	13.6	12.3	-1.7	[-2.7; -0.6]
Flemish Region	15.8	16.2	16.2	15.4	15.3	15.6	15.3	15.0	14.2	14.2	14.1	13.4	13.4	12.9	13.2	-1.6	[-1.8; -1.3]
Walloon Region	16.9	15.0	16.2	16.4	16.4	16.0	17.4	17.4	19.2	19.1	16.9	16.9	16.1	16.7	16.5	0.2	[-0.5; 0.8]

Females	2005	2006	2007	2008	2009	2010	2011	2012	2013	2014	2015	2016	2017	2018	2019	AAPC	95% CI
Belgium	3.3	2.9	2.9	3.3	3.1	3.3	3.3	3.2	3.0	3.1	3.2	3.1	2.9	3.1	3.1]-0.1;0[[-0.8; 0.6]
Brussels-Capital Region	3.8	3.3	2.6	2.6	2.7	3.3	3.2	2.9	3.2	3.1	3.7	3.0	2.2	3.2	2.8	-0.7	[-2.5; 1.2]
Flemish Region	3.3	3.1	3.1	3.4	3.1	3.4	3.3	3.2	3.0	2.9	2.8	2.8	2.9	2.9	2.7	-1.1	[-1.7; -0.6]
Walloon Region	3.2	2.5	2.6	3.5	3.2	3.0	3.1	3.2	2.9	3.5	3.7	3.8	3.0	3.5	4.0	1.9	[0.6; 3.3]

WSR=Age-Standardised Rate, using the World Standard Population (N/100,000 person-years)
 AAPC = Average Annual Percentage Change over the 2005-2019 period

Figure 4: Bladder Cancer: Age-standardised incidence rates (WSR) by incidence year, sex and region



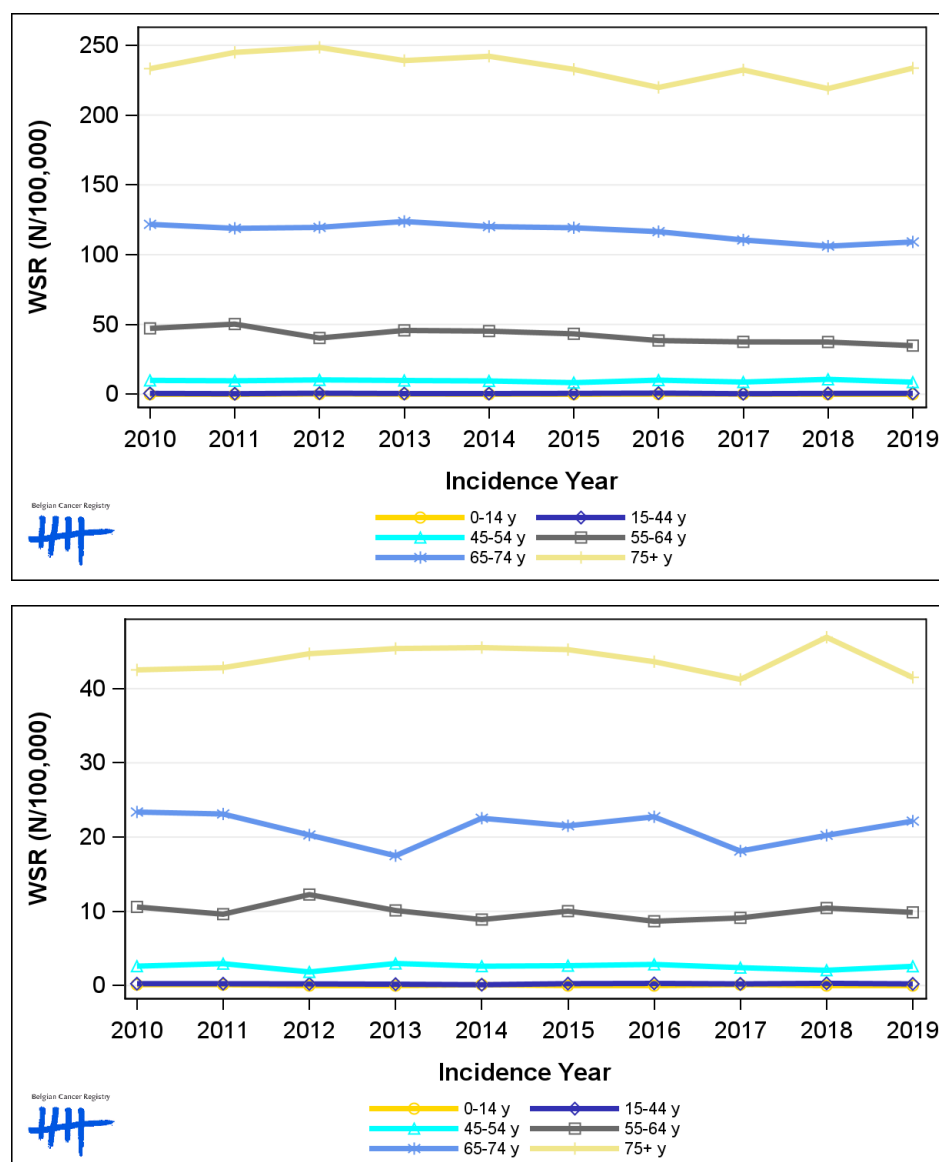
1.5. Incidence by broad age groups

Table 5: Bladder Cancer: Number of new diagnoses and age-standardised incidence rates (WSR) by broad age groups and incidence year by sex, Belgium

	N										WSR									
	2010	2011	2012	2013	2014	2015	2016	2017	2018	2019	2010	2011	2012	2013	2014	2015	2016	2017	2018	2019
Males																				
All ages	1,762	1,831	1,847	1,881	1,904	1,879	1,849	1,862	1,846	1,927	15.9	16.1	15.7	16.0	15.8	15.3	14.8	14.3	14.1	14.1
0-14 y	0	0	2	1	1	0	1	1	0	0	0.0	0.0	0.2	0.1	<0.1	0.0	0.1	0.1	0.0	0.0
15-44 y	17	11	21	14	13	17	22	10	16	16	0.6	0.4	0.8	0.5	0.5	0.6	0.8	0.4	0.6	0.6
45-54 y	81	80	86	82	81	71	86	73	91	72	9.9	9.7	10.3	9.9	9.5	8.3	10.1	8.7	10.7	8.7
55-64 y	304	333	267	306	305	296	269	266	267	253	47.2	50.3	40.3	45.7	45.2	43.3	38.5	37.5	37.4	34.8
65-74 y	544	527	546	575	572	583	587	582	581	615	121.7	118.9	119.6	123.8	120.1	119.3	116.5	110.5	106.1	109.1
75+ y	816	880	925	903	932	912	884	930	891	971	233.3	245.0	248.5	239.1	242.2	232.8	219.8	232.4	219.0	233.7
Females																				
All ages	477	473	493	480	507	509	505	464	522	511	3.3	3.3	3.2	3.0	3.1	3.2	3.1	2.9	3.1	3.1
0-14 y	1	1	0	0	1	0	0	1	0	0	0.1	0.1	0.0	0.0	0.1	0.0	0.0	0.1	0.0	0.0
15-44 y	7	7	6	5	3	7	7	6	8	6	0.3	0.3	0.2	0.2	0.1	0.3	0.3	0.2	0.3	0.2
45-54 y	21	24	15	25	22	22	24	20	17	20	2.6	3.0	1.8	3.0	2.6	2.7	2.9	2.4	2.1	2.6
55-64 y	70	65	83	69	62	70	62	67	77	73	10.6	9.6	12.3	10.1	8.9	10.0	8.7	9.1	10.4	9.9
65-74 y	120	117	109	90	121	116	126	105	122	136	23.4	23.1	20.3	17.5	22.5	21.5	22.7	18.1	20.2	22.2
75+ y	258	259	280	291	298	294	286	265	298	276	42.5	42.8	44.7	45.4	45.5	45.3	43.6	41.2	46.9	41.5

N=Number of invasive tumours
WSR=Age-Standardised Rate, using the World Standard Population (N/100,000 person-years)

Figure 5: Bladder Cancer: Age-standardised incidence rates (WSR) versus incidence year by broad age groups for males (top) and females (bottom), Belgium



2. Relative survival

Table 6: Bladder Cancer: 5-year relative survival proportion by sex, age group and region, Belgium 2015-2019

	5-year relative survival 2015-2019 (%)					
	Males			Females		
	N at risk	estimate	95% CI	N at risk	estimate	95% CI
Overall	9,331	59.0	[57.3, 60.6]	2,501	49.0	[46.1, 51.9]
Age group						
15-59 years	951	73.9	[70.2, 77.1]	272	62.1	[55.3, 68.1]
60-74 years	3,804	65.2	[63.0, 67.4]	815	61.4	[56.8, 65.6]
75+ years	4,576	48.9	[46.0, 51.9]	1,414	38.2	[33.9, 42.6]
Region						
Brussels-Capital Region	687	51.8	[46.1, 57.5]	192	41.7	[31.3, 52.4]
Flemish Region	5,521	60.0	[57.9, 62.2]	1,431	51.3	[47.4, 55.2]
Walloon Region	3,123	58.8	[55.8, 61.7]	878	46.8	[41.9, 51.6]

Figure 6: Bladder Cancer: relative survival proportion by sex, Belgium 2015-2019

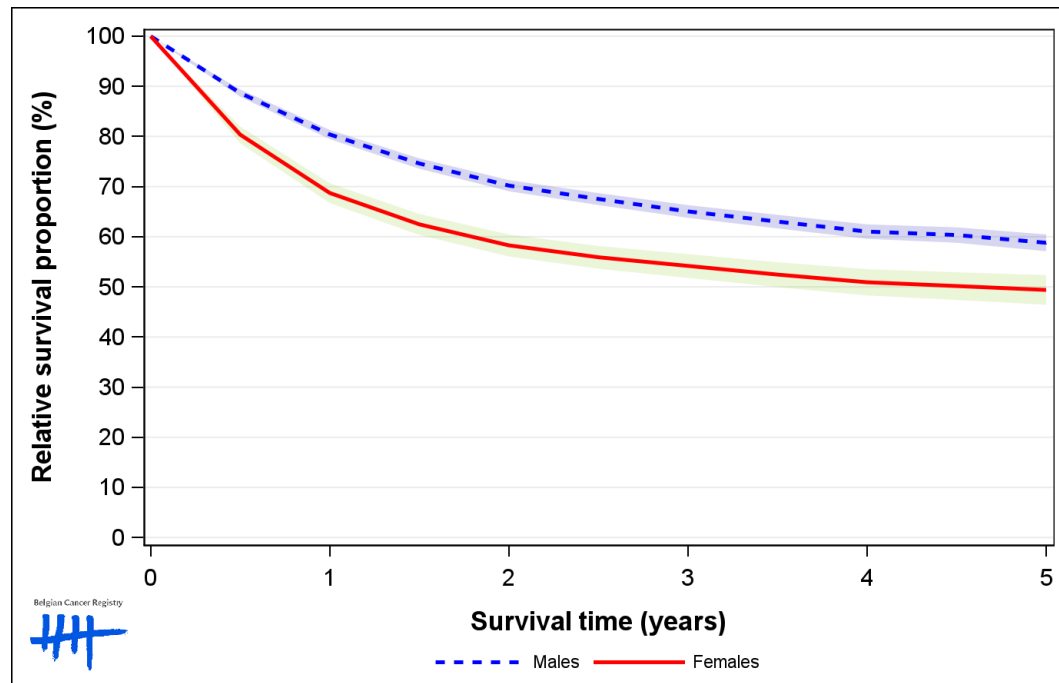


Figure 7: Bladder Cancer: relative survival proportion by age group in males, Belgium 2015-2019

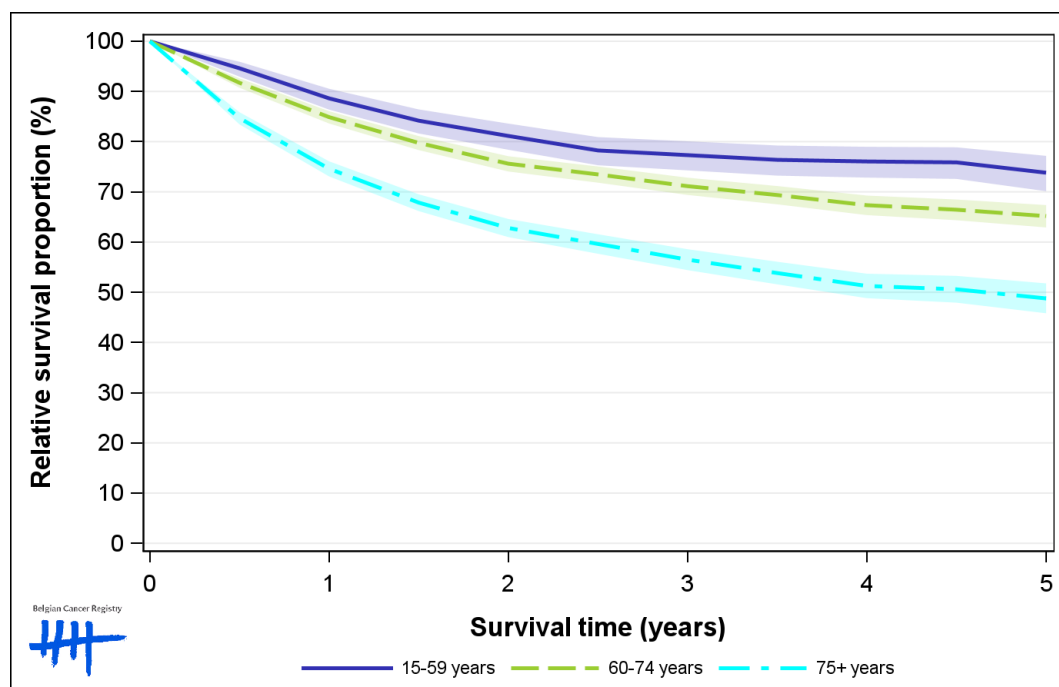


Figure 8: Bladder Cancer: relative survival proportion by age group in females, Belgium 2015-2019

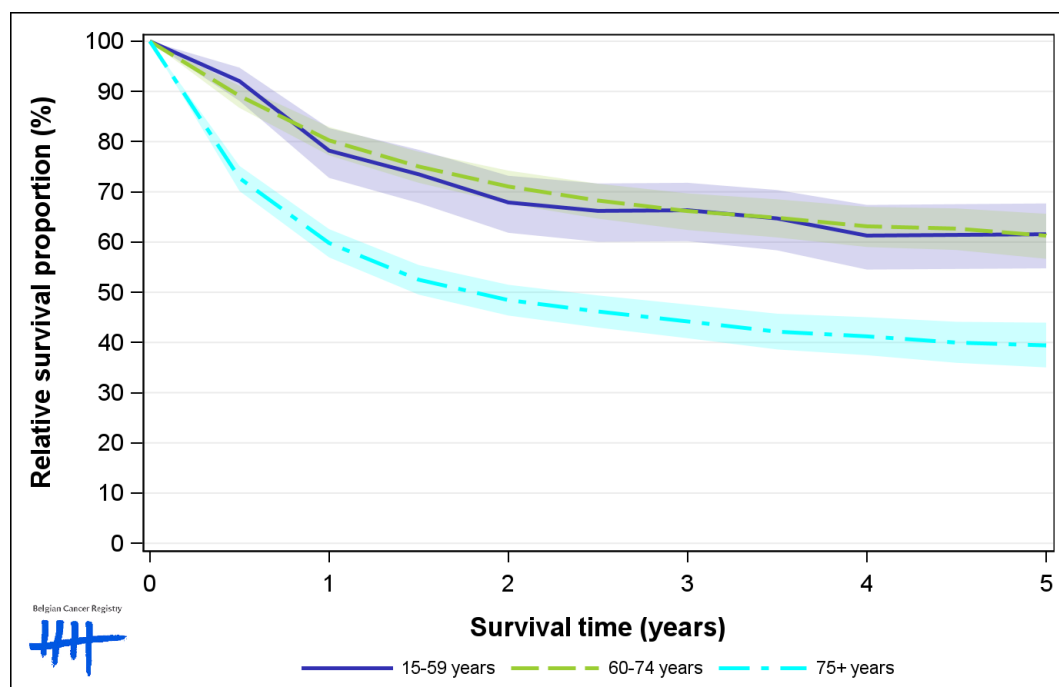


Figure 9: Bladder Cancer: relative survival proportion by region in males, Belgium 2015-2019

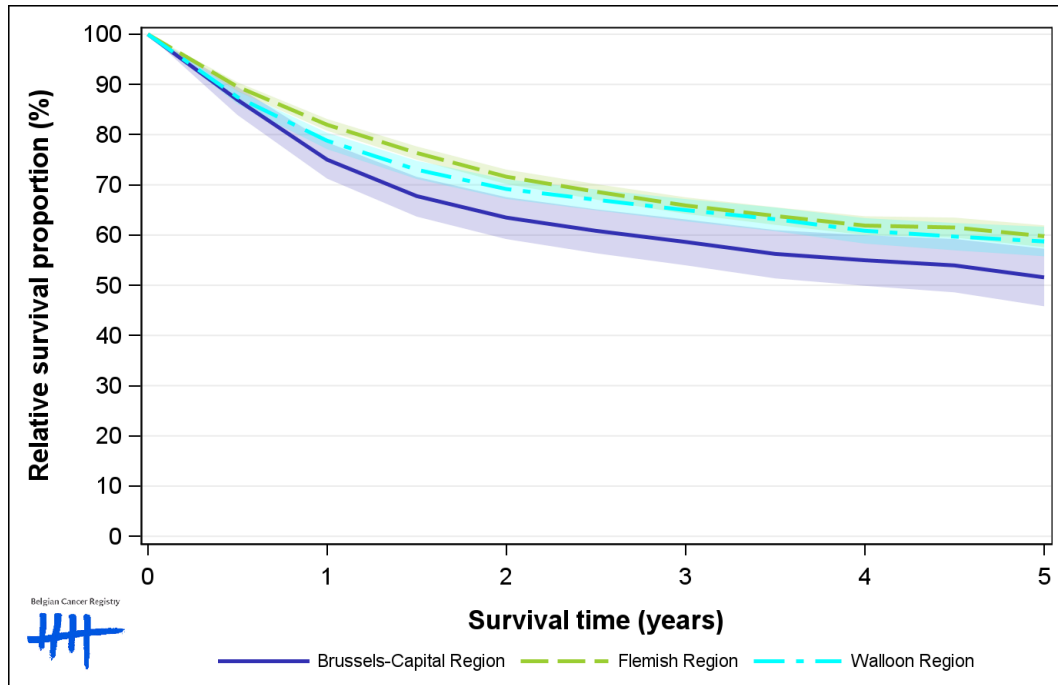


Figure 10: Bladder Cancer: relative survival proportion by region in females, Belgium 2015-2019

