

Belgian Cancer Registry



Cancer Fact Sheet **Thyroid Cancer**

ICD10 : C73

Belgium 2018

1. Cancer Incidence

1.1. Number of new diagnoses and incidence rates

Table 1: Thyroid Cancer: Average age at diagnosis, number of new cancer diagnoses (N), crude rate (CR), age-standardised incidence rates (ESR and WSR) and cumulative risk by sex and region, 2018

Males	Age (years)	N	CR	ESR	WSR	CRi
Belgium	55.8	251	4.5	3.9	3.1	0.33
Brussels-Capital Region	52.3	35	6.0	6.3	5.1	0.55
Flemish Region	56.1	126	3.9	3.3	2.6	0.27
Walloon Region	56.6	90	5.1	4.4	3.4	0.38

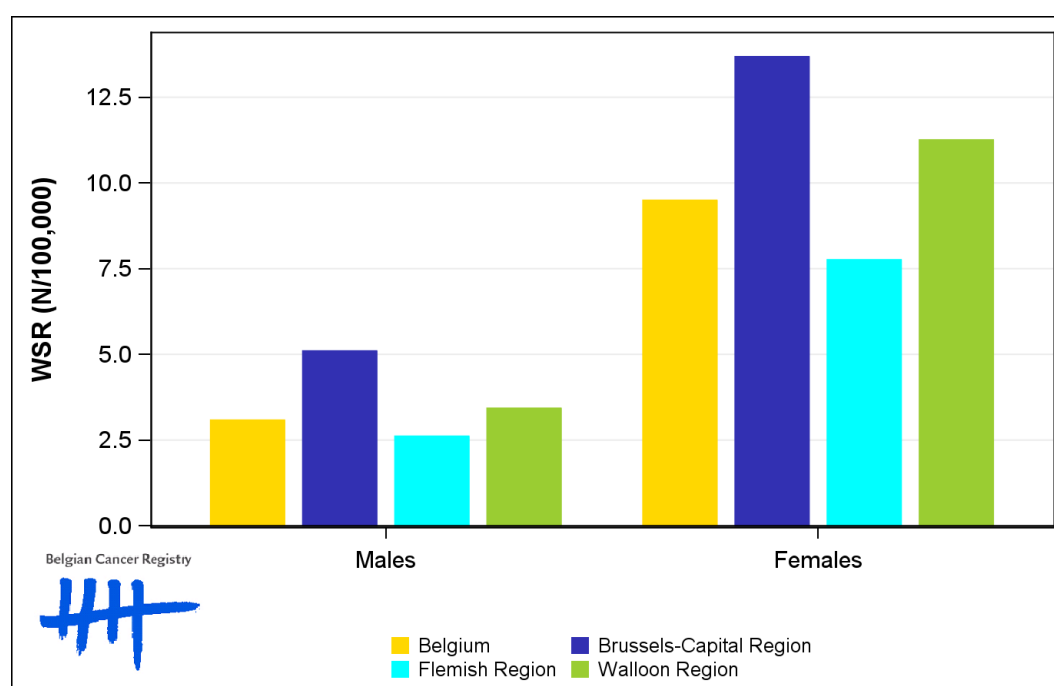
Females	Age (years)	N	CR	ESR	WSR	CRi
Belgium	51.9	720	12.5	11.4	9.5	0.93
Brussels-Capital Region	48.9	103	16.8	16.7	13.7	1.46
Flemish Region	53.2	347	10.5	9.3	7.8	0.75
Walloon Region	51.4	270	14.6	13.6	11.3	1.10

CR=Crude (all ages) Rate (N/100,000 person-years)
 ESR=Age-Standardised Rate, using the European Standard Population (N/100,000 person-years)
 WSR=Age-Standardised Rate, using the World Standard Population (N/100,000 person-years)
 CRi=Cumulative Risk for 0-74 years (%)

Belgian Cancer Registry



Figure 1: Thyroid Cancer: Age-standardised incidence rates by sex and region, 2018



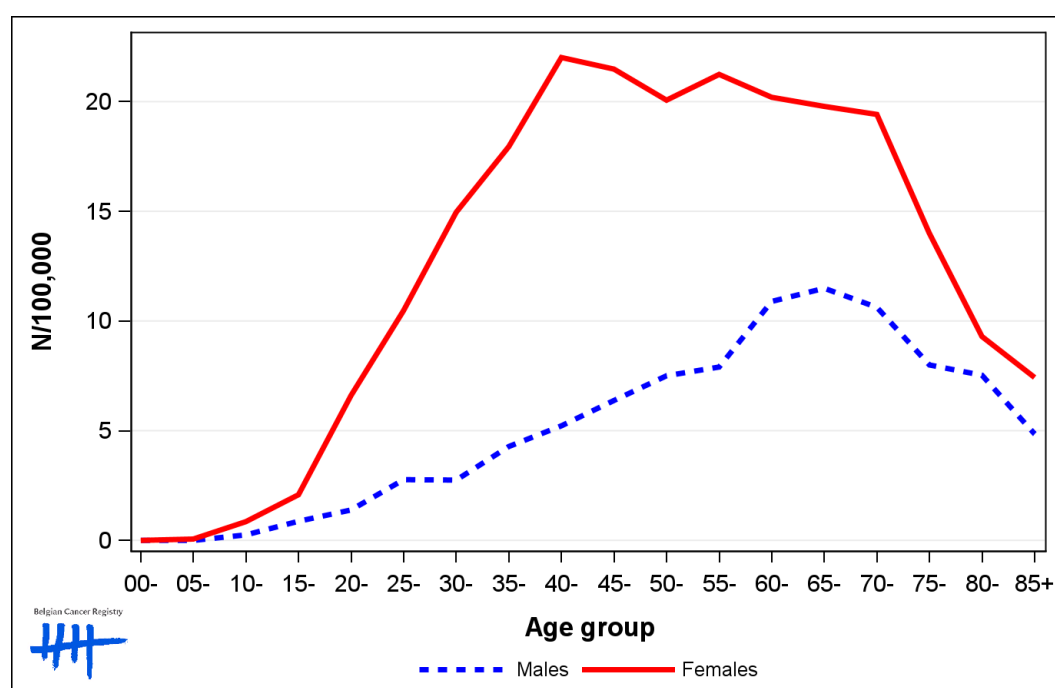
1.2. Age-specific incidence rates

Table 2: Thyroid Cancer: Age-specific incidence rates, crude rate (CR) and age-standardised incidence rates (ESR and WSR) by sex, Belgium 2018

	00-	05-	10-	15-	20-	25-	30-	35-	40-	45-	50-	55-	60-	65-	70-	75-	80-	85+	CR	ESR	WSR
Males	0.0	0.0	0.6	1.2	1.2	2.4	3.0	3.2	4.3	4.5	6.1	9.0	10.8	10.4	8.8	8.5	7.0	2.9	4.5	3.9	3.1
Females	0.0	0.3	1.3	3.3	5.4	12.4	13.2	14.5	18.0	20.1	18.0	16.9	20.9	20.6	21.8	13.0	10.7	6.0	12.5	11.4	9.5

CR=Crude (all ages) Rate (N/100,000 person-years)
 ESR=Age-Standardised Rate, using the European Standard Population (N/100,000 person-years)
 WSR=Age-Standardised Rate, using the World Standard Population (N/100,000 person-years)

Figure 2: Thyroid Cancer: Age-specific incidence rates by sex, 2014-2018



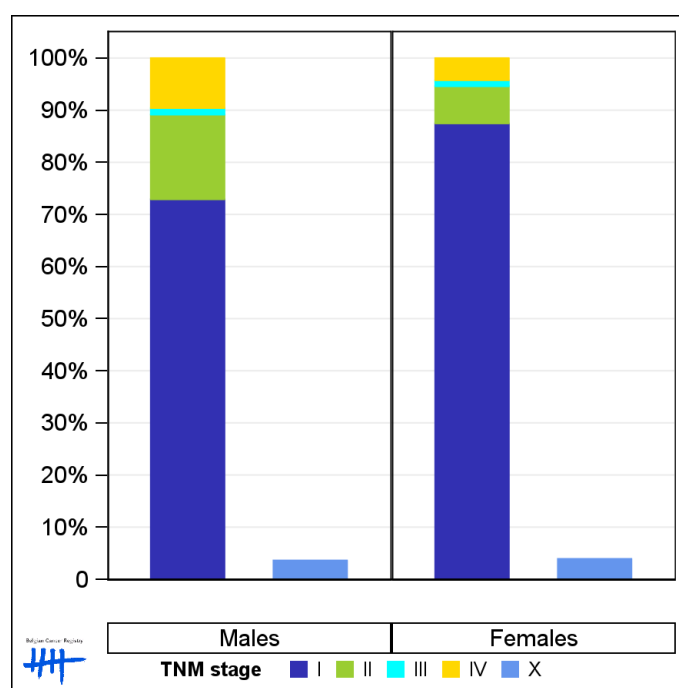
1.3. Combined stage

Table 3: Thyroid Cancer: Distribution of combined stage by sex, Belgium 2018

	Stage I	Stage II	Stage III	Stage IV	Stage X	Stage NA	Total
Males							
N	175	39	3	23	9	2	251
%	69.7	15.5	1.2	9.2	3.6	0.8	100
Females							
N	601	49	8	29	28	5	720
%	83.5	6.8	1.1	4.0	3.9	0.7	100

Staging according to the TNM 8th edition (Ref: Brierley JD, Gospodarowicz MK, Wittekind Ch. TNM classification of malignant tumours, UICC 8th edition)
 Combined TNM stage : compilation of pathological (pTNM) and clinical (cTNM) stage. pTNM prevails over cTNM, except when cTNM stage is IV
 Stage X: diagnoses with an unknown stage
 Stage NA: diagnoses with a histological diagnosis where no stage can be evaluated (Not Applicable)

Figure 3: Thyroid Cancer: Bar chart of known combined stage by sex, Belgium 2018



1.4. Trends in incidence

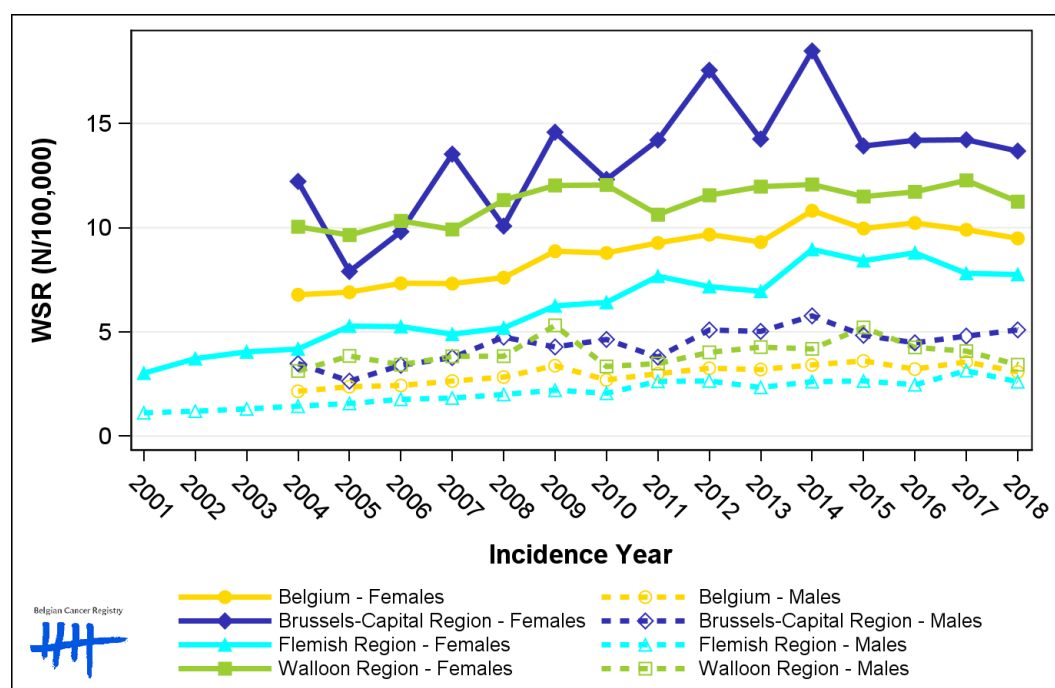
Table 4: Thyroid Cancer: Age-standardised incidence rates (WSR) and average annual percentage change (AAPC) by incidence year, sex and region

Males	2004	2005	2006	2007	2008	2009	2010	2011	2012	2013	2014	2015	2016	2017	2018	AAPC	95% CI
Belgium	2.2	2.4	2.4	2.6	2.8	3.4	2.7	3.0	3.3	3.2	3.4	3.6	3.2	3.6	3.1	2.7	[1.7; 3.7]
Brussels-Capital Region	3.5	2.6	3.4	3.8	4.8	4.3	4.6	3.8	5.1	5.0	5.8	4.8	4.5	4.8	5.1	3.9	[2.2; 5.6]
Flemish Region	1.4	1.6	1.8	1.8	2.0	2.2	2.1	2.6	2.6	2.3	2.6	2.6	2.5	3.1	2.6	4.6	[3.7; 5.6]
Walloon Region	3.1	3.8	3.4	3.8	3.8	5.3	3.3	3.5	4.0	4.3	4.2	5.2	4.3	4.1	3.4	1.2	[-0.7; 3.1]

Females	2004	2005	2006	2007	2008	2009	2010	2011	2012	2013	2014	2015	2016	2017	2018	AAPC	95% CI
Belgium	6.8	6.9	7.3	7.3	7.6	8.9	8.8	9.3	9.7	9.3	10.8	10.0	10.2	9.9	9.5	2.9	[2.3; 3.4]
Brussels-Capital Region	12.2	7.9	9.8	13.5	10.1	14.6	12.3	14.2	17.6	14.3	18.5	13.9	14.2	14.2	13.7	2.2	[0.1; 4.4]
Flemish Region	4.2	5.3	5.3	4.9	5.2	6.3	6.4	7.7	7.2	7.0	9.0	8.4	8.8	7.8	7.8	4.7	[3.5; 6.0]
Walloon Region	10.0	9.6	10.3	9.9	11.3	12.0	12.1	10.6	11.6	12.0	12.1	11.5	11.7	12.3	11.3	1.2	[0.5; 1.9]

WSR=Age-Standardised Rate, using the World Standard Population (N/100,000 person-years)
AAPC = Average Annual Percentage Change over the 2004-2018 period

Figure 4: Thyroid Cancer: Age-standardised incidence rates (WSR) by incidence year, sex and region



1.5. Incidence by broad age groups

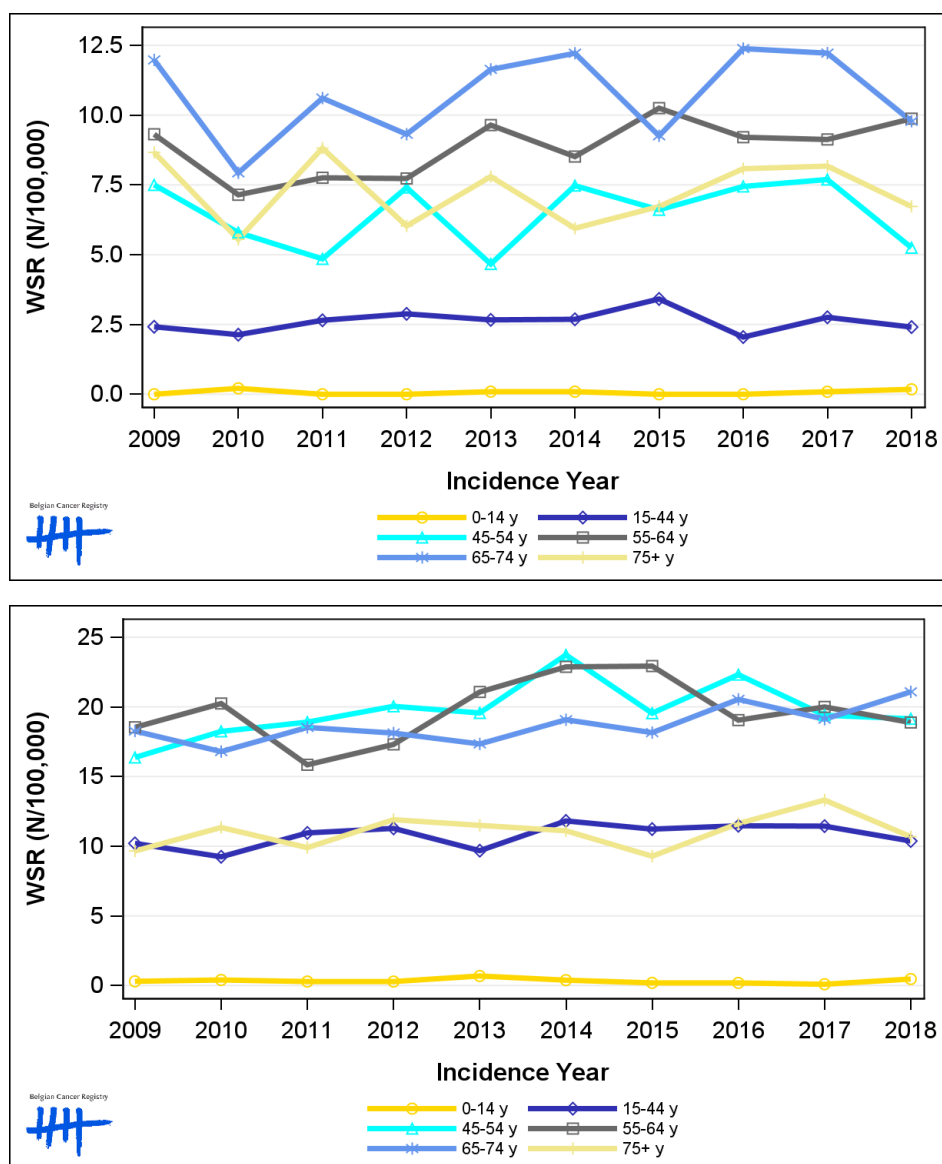
Table 5: Thyroid Cancer: Number of new diagnoses and age-standardised incidence rates (WSR) by broad age groups and incidence year by sex, Belgium

	N										WSR									
	2009	2010	2011	2012	2013	2014	2015	2016	2017	2018	2009	2010	2011	2012	2013	2014	2015	2016	2017	2018
Males																				
All ages	258	203	240	249	250	264	281	266	290	251	3.4	2.7	3.0	3.3	3.2	3.4	3.6	3.2	3.6	3.1
0-14 y	0	2	0	0	1	1	0	0	1	2	0.0	0.2	0.0	0.0	<0.1	<0.1	0.0	0.0	<0.1	0.2
15-44 y	58	53	69	70	64	63	83	48	66	56	2.4	2.1	2.7	2.9	2.7	2.7	3.4	2.0	2.8	2.4
45-54 y	60	46	39	62	38	62	55	60	62	43	7.5	5.8	4.8	7.4	4.7	7.5	6.6	7.4	7.7	5.3
55-64 y	60	47	52	52	65	58	71	65	65	72	9.3	7.1	7.8	7.7	9.6	8.5	10.2	9.2	9.1	9.9
65-74 y	49	34	46	42	54	58	45	62	63	52	12.0	7.9	10.6	9.3	11.6	12.2	9.3	12.4	12.2	9.8
75+ y	31	21	34	23	28	22	27	31	33	26	8.7	5.6	8.8	6.0	7.8	5.9	6.7	8.1	8.2	6.7
Females																				
All ages	633	651	669	706	688	802	740	778	753	720	8.9	8.8	9.3	9.7	9.3	10.8	10.0	10.2	9.9	9.5
0-14 y	3	4	3	3	7	4	2	2	1	5	0.3	0.4	0.3	0.3	0.7	0.4	0.2	0.2	<0.1	0.5
15-44 y	240	218	259	265	227	284	266	277	274	241	10.2	9.2	11.0	11.3	9.7	11.8	11.2	11.5	11.4	10.4
45-54 y	127	145	151	160	156	189	156	178	152	150	16.4	18.2	18.9	20.0	19.6	23.7	19.6	22.3	19.4	19.2
55-64 y	121	136	109	120	147	161	165	139	147	140	18.5	20.2	15.8	17.3	21.1	22.9	22.9	19.1	20.0	18.9
65-74 y	88	80	91	91	88	100	97	113	109	124	18.3	16.8	18.5	18.1	17.3	19.1	18.2	20.5	19.1	21.1
75+ y	54	68	56	67	63	64	54	69	70	60	9.7	11.3	9.9	11.9	11.5	11.1	9.3	11.6	13.3	10.7

N=Number of invasive tumours

WSR=Age-Standardised Rate, using the World Standard Population (N/100,000 person-years)

Figure 5: Thyroid Cancer: Age-standardised incidence rates (WSR) versus incidence year by broad age groups for males (top) and females (bottom), Belgium



2. Relative survival

Table 6: Thyroid Cancer: 5-year relative survival proportion by sex, age group and region, Belgium 2014-2018

	5-year relative survival 2014-2018 (%)					
	Males			Females		
	N at risk	estimate	95% CI	N at risk	estimate	95% CI
Overall	1,337	92.7	[90.2, 95.0]	3,750	96.4	[95.3, 97.4]
Age group						
15-59 years	741	97.8	[95.9, 99.2]	2,554	99.5	[98.9, 100.0]
60-74 years	459	90.5	[85.1, 95.0]	881	94.1	[91.0, 96.7]
75+ years	137	69.1	[53.5, 84.2]	315	73.3	[62.9, 83.0]
Region						
Brussels-Capital Region	171	94.5	[86.4, 99.7]	551	97.9	[94.6, 100.2]
Flemish Region	636	90.0	[85.9, 93.5]	1,793	94.6	[92.9, 96.1]
Walloon Region	530	95.2	[91.4, 98.3]	1,406	98.0	[96.2, 99.5]

Figure 6: Thyroid Cancer: relative survival proportion by sex, Belgium 2014-2018

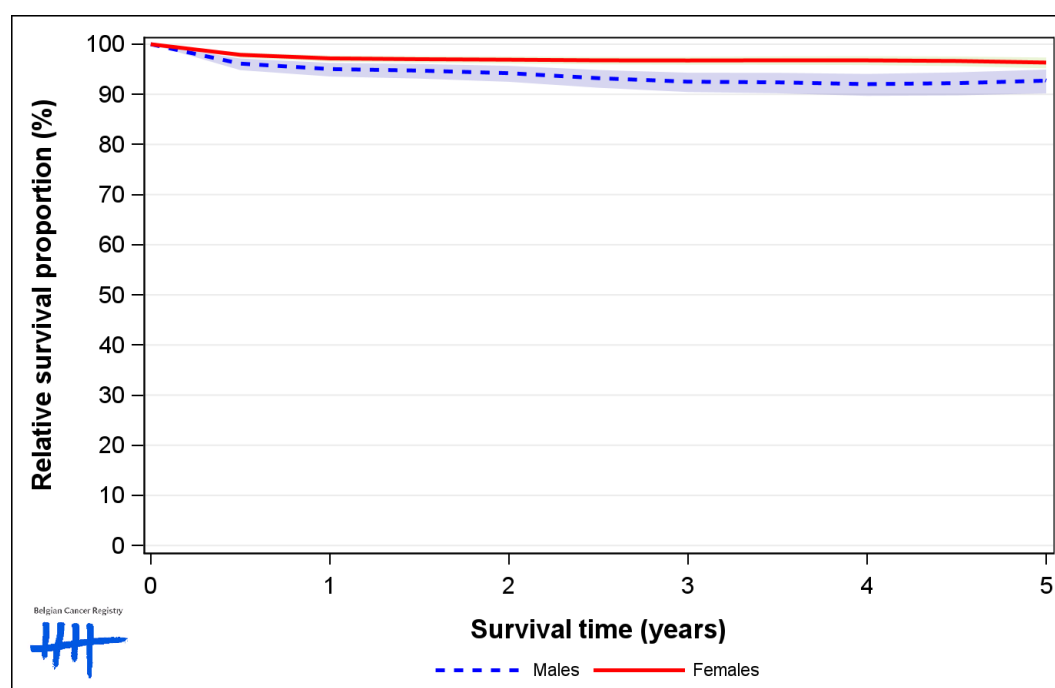


Figure 7: Thyroid Cancer: relative survival proportion by age group in males, Belgium 2014-2018

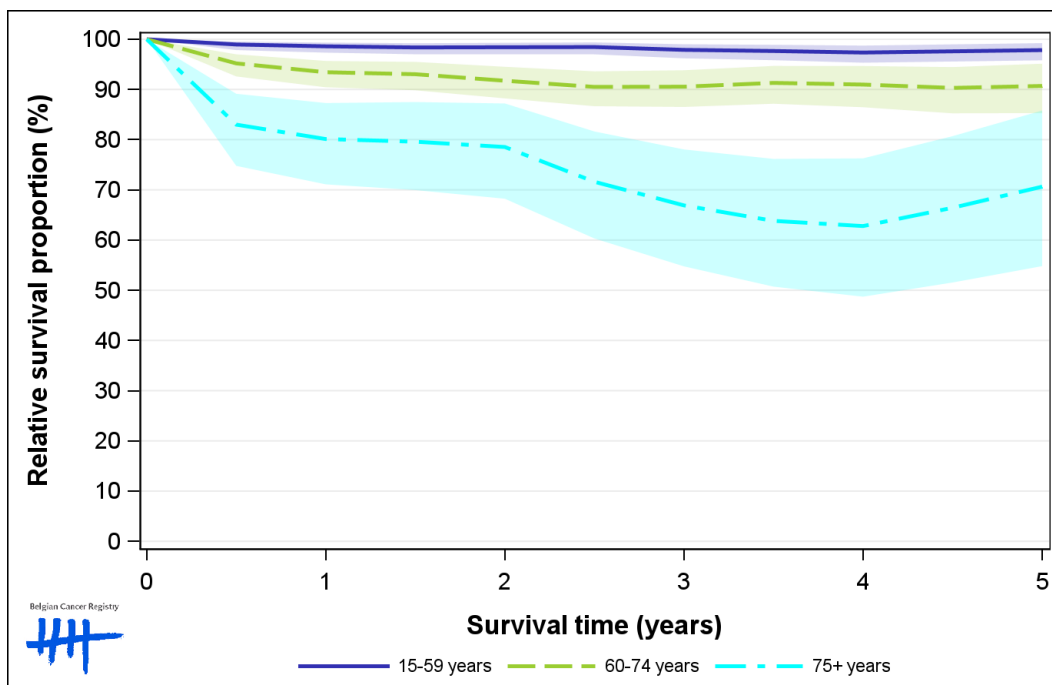


Figure 8: Thyroid Cancer: relative survival proportion by age group in females, Belgium 2014-2018

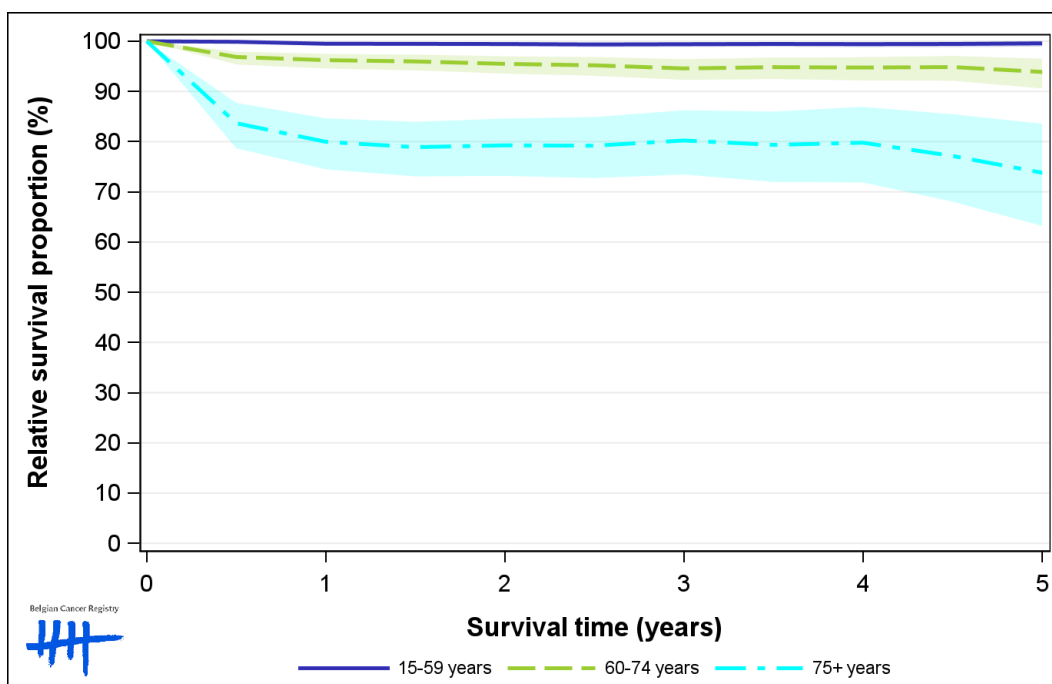


Figure 9: Thyroid Cancer: relative survival proportion by region in males, Belgium 2014-2018

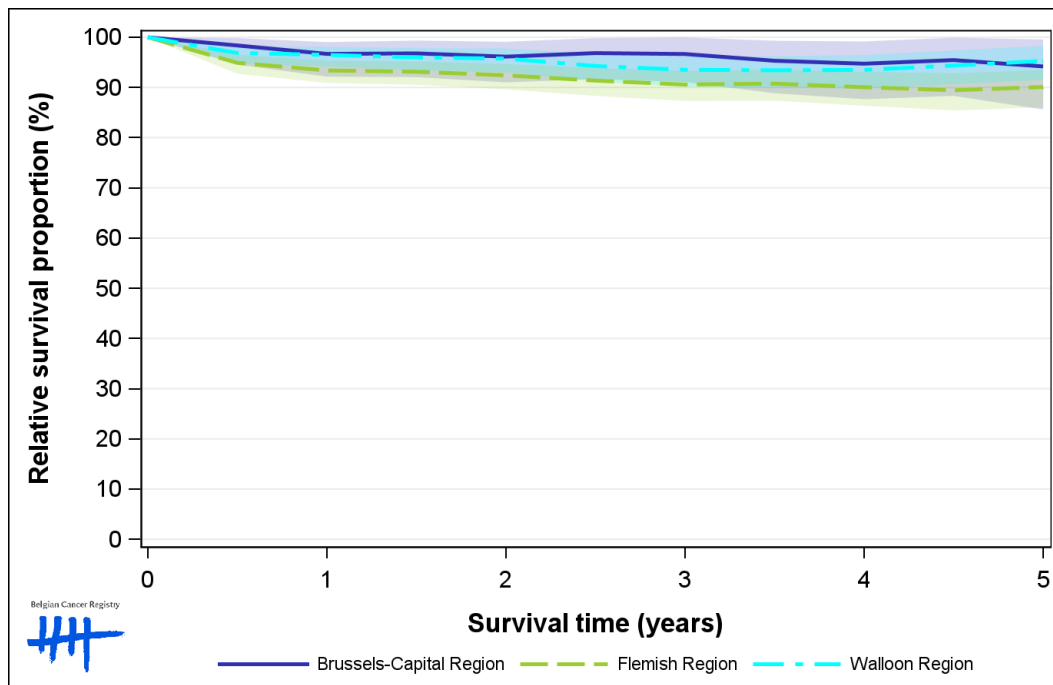


Figure 10: Thyroid Cancer: relative survival proportion by region in females, Belgium 2014-2018

