



Belgian Cancer Registry



Cancer Fact Sheet **Pancreatic Cancer**

ICD10 : C25

Belgium 2018

1. Cancer Incidence

1.1. Number of new diagnoses and incidence rates

Table 1: Pancreatic Cancer: Average age at diagnosis, number of new cancer diagnoses (N), crude rate (CR), age-standardised incidence rates (ESR and WSR) and cumulative risk by sex and region, 2018

Males	Age (years)	N	CR	ESR	WSR	CRi
Belgium	69.5	1,042	18.6	13.3	9.0	1.12
Brussels-Capital Region	68.4	75	12.8	13.1	8.9	1.14
Flemish Region	69.7	652	20.1	13.5	9.1	1.13
Walloon Region	69.4	315	17.8	13.1	8.8	1.10

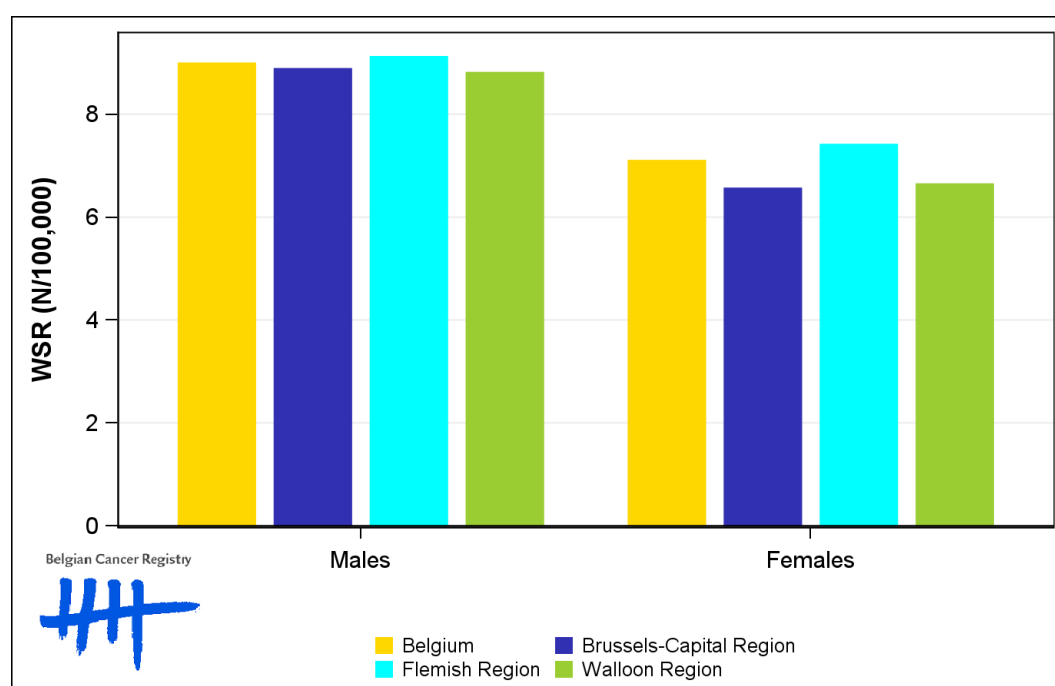
Females	Age (years)	N	CR	ESR	WSR	CRi
Belgium	71.3	982	17.0	10.5	7.1	0.84
Brussels-Capital Region	69.2	71	11.6	9.6	6.6	0.77
Flemish Region	71.1	610	18.4	11.0	7.4	0.88
Walloon Region	72.0	301	16.2	9.9	6.6	0.80

CR=Crude (all ages) Rate (N/100,000 person-years)
 ESR=Age-Standardised Rate, using the European Standard Population (N/100,000 person-years)
 WSR=Age-Standardised Rate, using the World Standard Population (N/100,000 person-years)
 CRi=Cumulative Risk for 0-74 years (%)

Belgian Cancer Registry



Figure 1: Pancreatic Cancer: Age-standardised incidence rates by sex and region, 2018



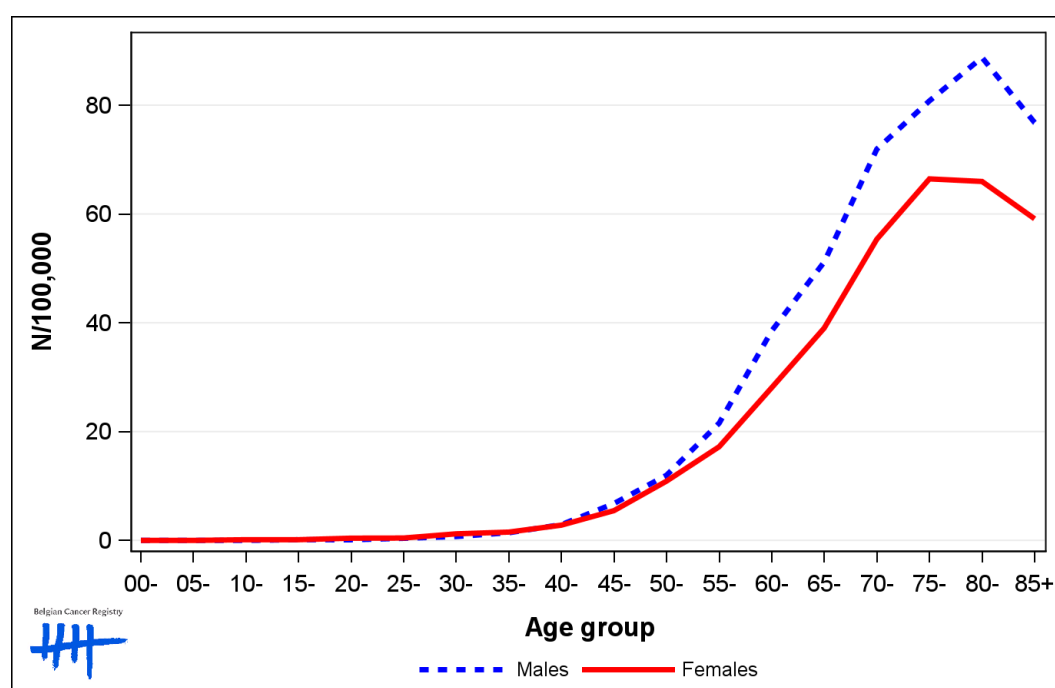
1.2. Age-specific incidence rates

Table 2: Pancreatic Cancer: Age-specific incidence rates, crude rate (CR) and age-standardised incidence rates (ESR and WSR) by sex, Belgium 2018

	00-	05-	10-	15-	20-	25-	30-	35-	40-	45-	50-	55-	60-	65-	70-	75-	80-	85+	CR	ESR	WSR
Males	0.0	0.0	0.0	0.0	0.0	0.5	0.8	1.6	3.5	6.8	10.7	22.5	40.8	56.3	82.3	86.4	93.0	89.4	18.6	13.3	9.0
Females	0.0	0.0	0.0	0.0	0.3	0.0	1.9	1.1	4.2	6.2	14.2	15.6	30.5	38.0	57.7	74.3	68.5	67.8	17.0	10.5	7.1

CR=Crude (all ages) Rate (N/100,000 person-years)
 ESR=Age-Standardised Rate, using the European Standard Population (N/100,000 person-years)
 WSR=Age-Standardised Rate, using the World Standard Population (N/100,000 person-years)

Figure 2: Pancreatic Cancer: Age-specific incidence rates by sex, 2014-2018



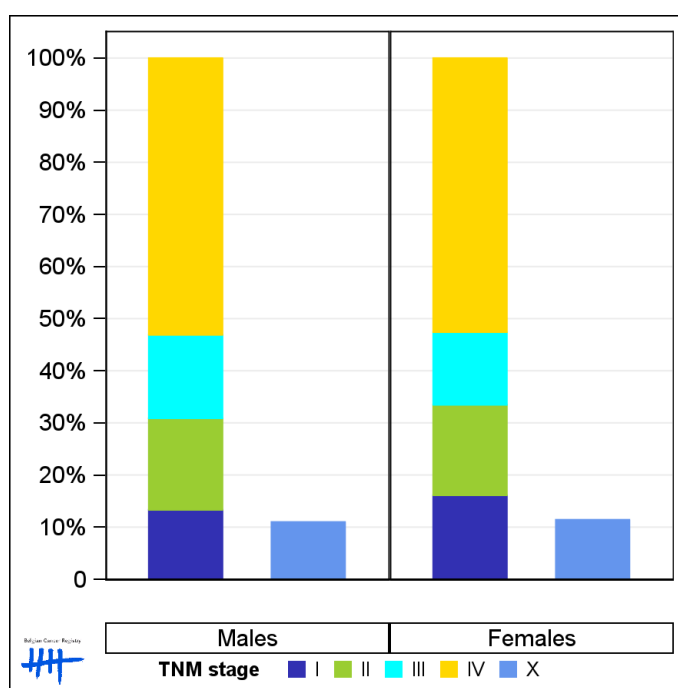
1.3. Combined stage

Table 3: Pancreatic Cancer: Distribution of combined stage by sex, Belgium 2018

	Stage I	Stage II	Stage III	Stage IV	Stage X	Stage NA	Total
Males							
N	123	162	148	490	114	5	1,042
%	11.8	15.5	14.2	47.0	10.9	0.5	100
Females							
N	140	151	121	457	112	1	982
%	14.3	15.4	12.3	46.5	11.4	0.1	100

Staging according to the TNM 8th edition (Ref: Brierley JD, Gospodarowicz MK, Wittekind Ch. TNM classification of malignant tumours, UICC 8th edition)
 Combined TNM stage : compilation of pathological (pTNM) and clinical (cTNM) stage. pTNM prevails over cTNM, except when cTNM stage is IV
 Stage X: diagnoses with an unknown stage
 Stage NA: diagnoses with a histological diagnosis where no stage can be evaluated (Not Applicable)

Figure 3: Pancreatic Cancer: Bar chart of known combined stage by sex, Belgium 2018



1.4. Trends in incidence

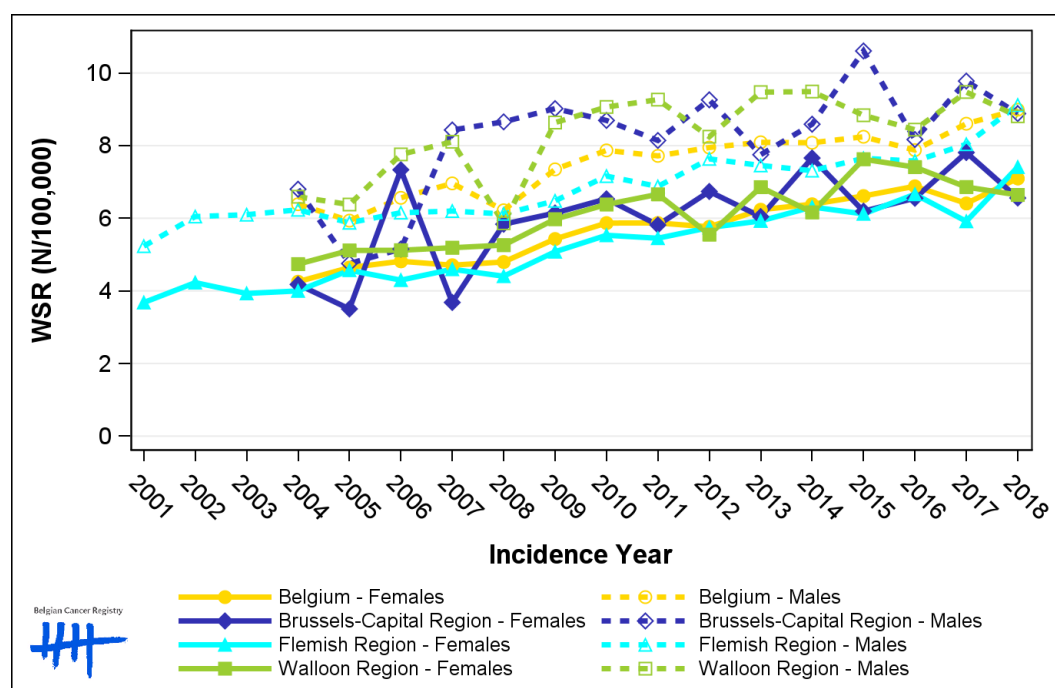
Table 4: Pancreatic Cancer: Age-standardised incidence rates (WSR) and average annual percentage change (AAPC) by incidence year, sex and region

Males	2004	2005	2006	2007	2008	2009	2010	2011	2012	2013	2014	2015	2016	2017	2018	AAPC	95% CI
Belgium	6.4	5.9	6.6	7.0	6.2	7.3	7.9	7.7	7.9	8.1	8.1	8.2	7.9	8.6	9.0	2.6	[1.9; 3.3]
Brussels-Capital Region	6.8	4.8	5.2	8.4	8.7	9.0	8.7	8.1	9.3	7.8	8.6	10.6	8.2	9.8	8.9	4.1	[2.0; 6.3]
Flemish Region	6.2	5.9	6.2	6.2	6.1	6.5	7.2	6.9	7.6	7.5	7.3	7.7	7.6	8.0	9.1	2.6	[2.0; 3.2]
Walloon Region	6.6	6.4	7.8	8.1	5.9	8.6	9.1	9.3	8.2	9.5	9.5	8.8	8.4	9.5	8.8	2.4	[1.1; 3.8]

Females	2004	2005	2006	2007	2008	2009	2010	2011	2012	2013	2014	2015	2016	2017	2018	AAPC	95% CI
Belgium	4.3	4.6	4.8	4.7	4.8	5.4	5.9	5.9	5.8	6.2	6.4	6.6	6.9	6.4	7.1	3.6	[3.0; 4.1]
Brussels-Capital Region	4.2	3.5	7.3	3.7	5.8	6.1	6.5	5.8	6.7	6.0	7.7	6.2	6.6	7.8	6.6	3.7	[1.2; 6.3]
Flemish Region	4.0	4.6	4.3	4.6	4.4	5.1	5.5	5.5	5.7	5.9	6.3	6.1	6.7	5.9	7.4	3.9	[3.1; 4.6]
Walloon Region	4.7	5.1	5.1	5.2	5.3	6.0	6.4	6.7	5.6	6.9	6.2	7.6	7.4	6.9	6.6	2.9	[1.9; 4.0]

WSR=Age-Standardised Rate, using the World Standard Population (N/100,000 person-years)
AAPC = Average Annual Percentage Change over the 2004-2018 period

Figure 4: Pancreatic Cancer: Age-standardised incidence rates (WSR) by incidence year, sex and region



1.5. Incidence by broad age groups

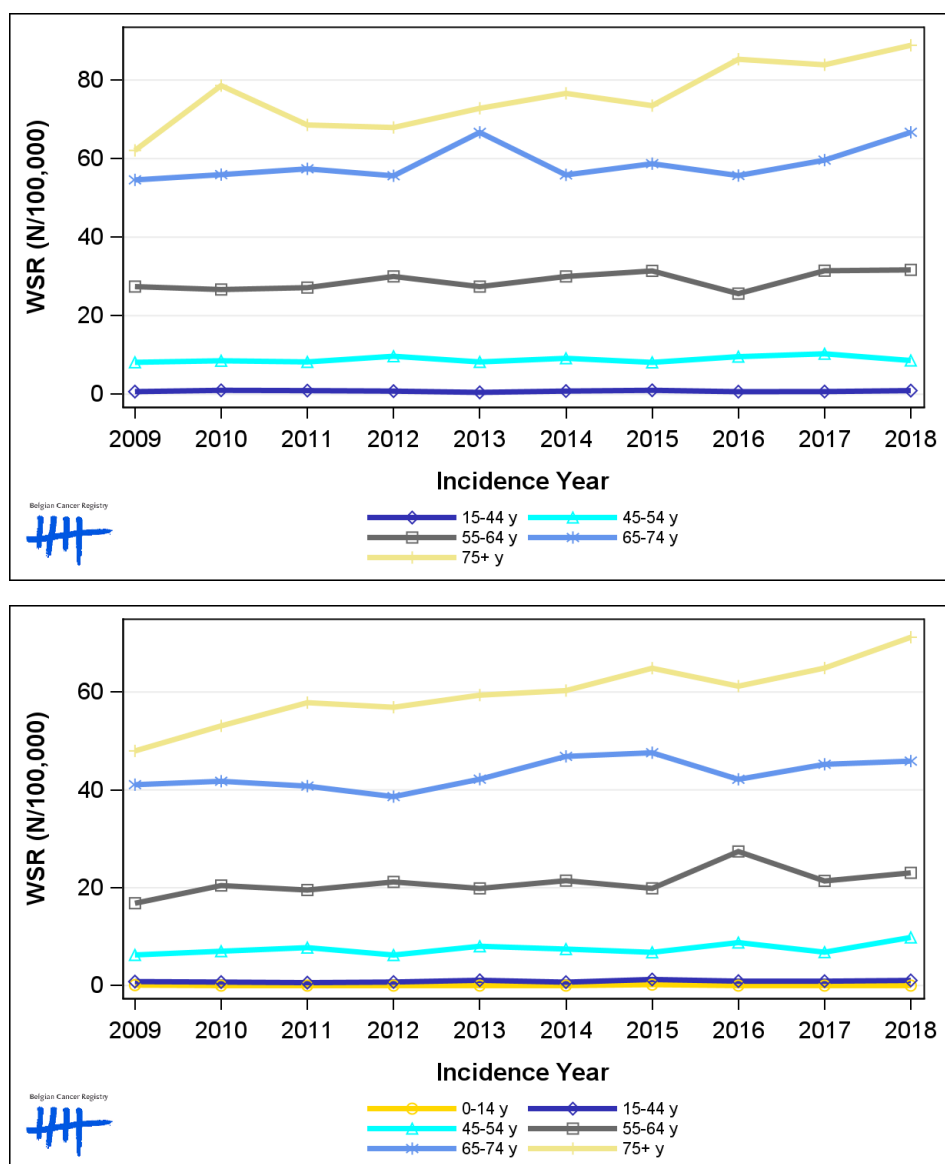
Table 5: Pancreatic Cancer: Number of new diagnoses and age-standardised incidence rates (WSR) by broad age groups and incidence year by sex, Belgium

	N										WSR									
	2009	2010	2011	2012	2013	2014	2015	2016	2017	2018	2009	2010	2011	2012	2013	2014	2015	2016	2017	2018
Males																				
All ages	709	788	780	807	857	865	887	894	974	1,042	7.3	7.9	7.7	7.9	8.1	8.1	8.2	7.9	8.6	9.0
0-14 y	0	0	0	0	0	0	0	0	0	0	0.0	0.0	0.0	0.0	0.0	0.0	0.0	0.0	0.0	0.0
15-44 y	19	25	23	21	13	20	26	17	18	24	0.7	1.0	0.9	0.8	0.5	0.8	1.0	0.7	0.7	0.9
45-54 y	66	69	68	81	69	77	68	81	85	71	8.1	8.5	8.2	9.7	8.2	9.2	8.1	9.6	10.3	8.6
55-64 y	174	172	181	198	185	205	216	178	222	228	27.4	26.7	27.2	30.0	27.4	30.0	31.4	25.6	31.5	31.7
65-74 y	230	242	254	252	309	266	286	280	313	364	54.6	55.9	57.4	55.6	66.7	55.8	58.7	55.7	59.6	66.7
75+ y	220	280	254	255	281	297	291	338	336	355	62.1	78.6	68.6	67.9	72.8	76.6	73.5	85.3	83.9	88.8
Females																				
All ages	664	737	758	747	814	842	886	896	890	982	5.4	5.9	5.9	5.8	6.2	6.4	6.6	6.9	6.4	7.1
0-14 y	1	0	0	0	0	0	2	0	0	0	<0.1	0.0	0.0	0.0	0.0	0.0	0.2	0.0	0.0	0.0
15-44 y	21	19	15	19	27	17	31	22	22	27	0.8	0.7	0.6	0.7	1.1	0.7	1.3	0.9	0.9	1.1
45-54 y	50	57	63	51	66	62	57	71	56	81	6.3	7.0	7.8	6.3	8.0	7.5	6.8	8.8	6.8	9.8
55-64 y	109	135	133	145	137	148	141	196	156	169	16.8	20.5	19.5	21.2	19.9	21.4	19.9	27.4	21.4	23.0
65-74 y	206	215	205	198	220	249	257	233	264	276	41.1	41.8	40.8	38.6	42.2	46.9	47.6	42.2	45.2	45.9
75+ y	277	311	342	334	364	366	398	374	392	429	48.0	53.1	57.8	56.9	59.4	60.3	64.9	61.2	64.9	71.2

N=Number of invasive tumours

WSR=Age-Standardised Rate, using the World Standard Population (N/100,000 person-years)

Figure 5: Pancreatic Cancer: Age-standardised incidence rates (WSR) versus incidence year by broad age groups for males (top) and females (bottom), Belgium



2. Relative survival

Table 6: Pancreatic Cancer: 5-year relative survival proportion by sex, age group and region, Belgium 2014-2018

	5-year relative survival 2014-2018 (%)					
	Males			Females		
	N at risk	estimate	95% CI	N at risk	estimate	95% CI
Overall	4,644	11.2	[10.1, 12.6]	4,477	11.9	[10.8, 13.2]
Age group						
15-59 years	892	21.2	[18.1, 24.5]	768	26.6	[22.8, 30.6]
60-74 years	2,142	11.7	[9.9, 13.7]	1,752	13.4	[11.6, 15.6]
75+ years	1,610	4.8	[3.4, 6.8]	1,957	4.8	[3.7, 6.3]
Region						
Brussels-Capital Region	367	8.5	[5.4, 12.8]	382	11.5	[8.1, 15.8]
Flemish Region	2,754	12.5	[11.0, 14.3]	2,605	12.5	[11.0, 14.2]
Walloon Region	1,523	9.6	[7.7, 11.8]	1,490	10.9	[9.0, 13.1]

Figure 6: Pancreatic Cancer: relative survival proportion by sex, Belgium 2014-2018

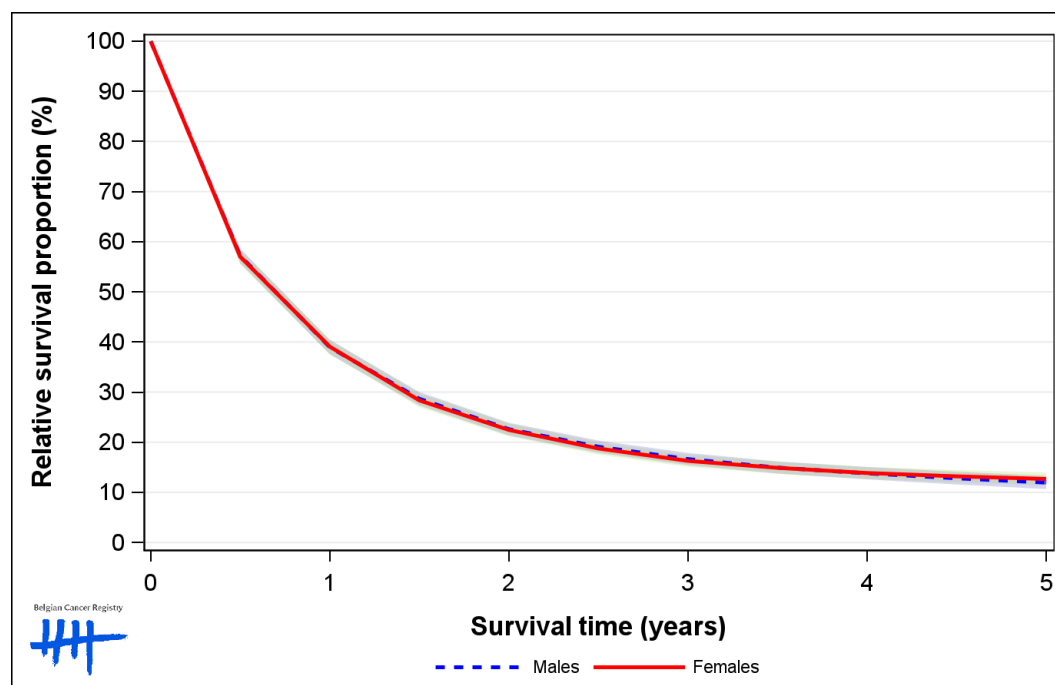


Figure 7: Pancreatic Cancer: relative survival proportion by age group in males, Belgium 2014-2018

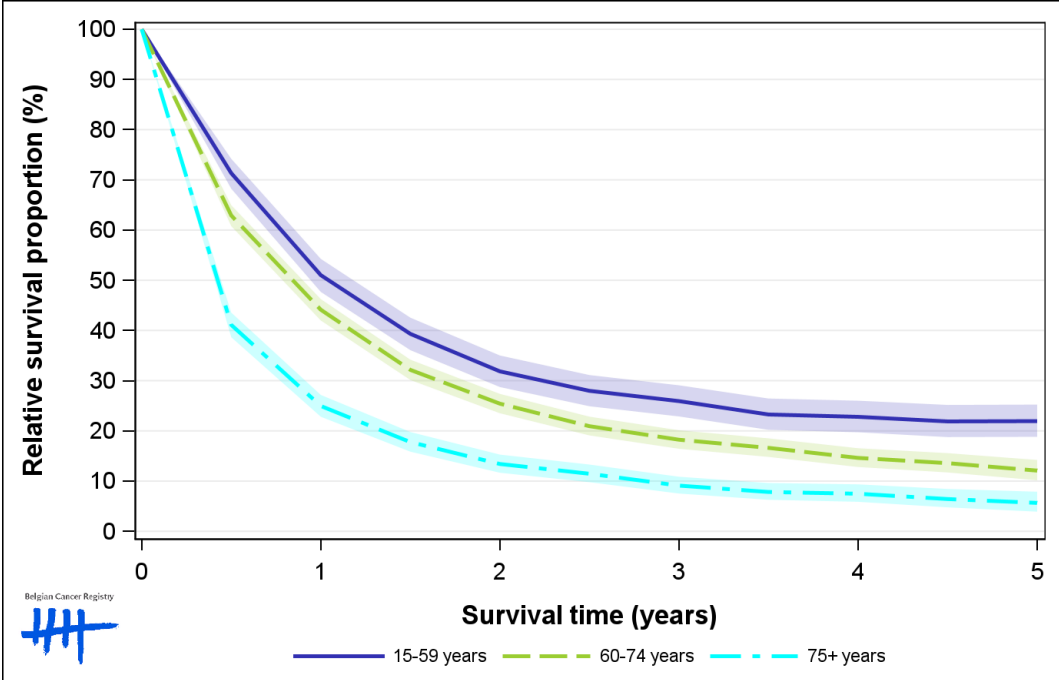


Figure 8: Pancreatic Cancer: relative survival proportion by age group in females, Belgium 2014-2018

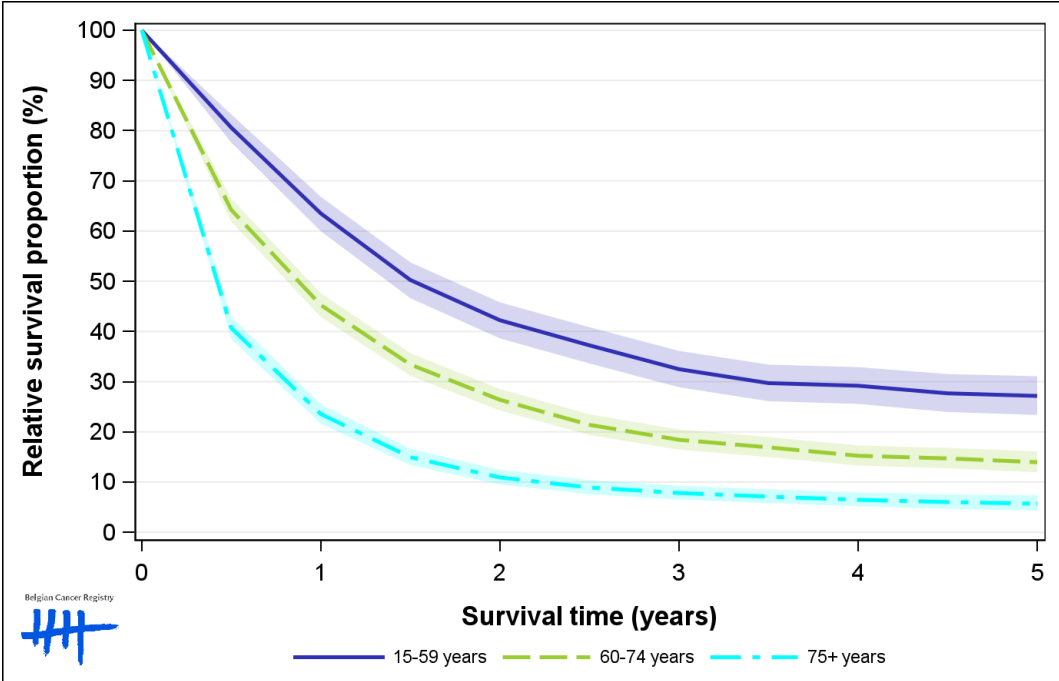


Figure 9: Pancreatic Cancer: relative survival proportion by region in males, Belgium 2014-2018

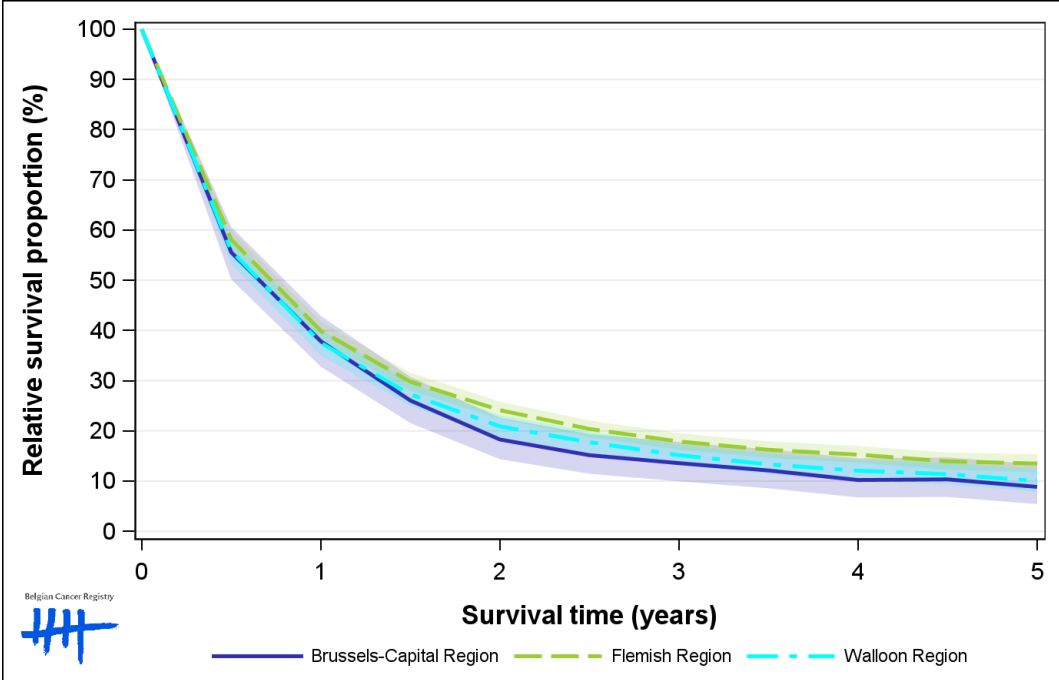


Figure 10: Pancreatic Cancer: relative survival proportion by region in females, Belgium 2014-2018

