



Belgian Cancer Registry



Cancer Fact Sheet **Ovarian Cancer**

ICD10 : C56

**Belgium 2018**

# 1. Cancer Incidence

## 1.1. Number of new diagnoses and incidence rates

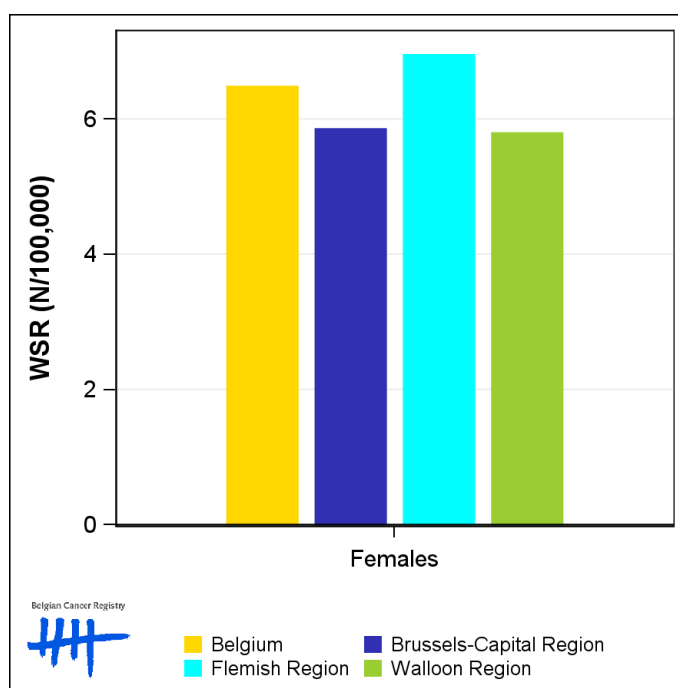
**Table 1:** Ovarian Cancer: Average age at diagnosis, number of new cancer diagnoses (N), crude rate (CR), age-standardised incidence rates (ESR and WSR) and cumulative risk by region, 2018

Females	Age (years)	N	CR	ESR	WSR	CRi
<b>Belgium</b>	<b>66.5</b>	<b>748</b>	<b>12.9</b>	<b>9.0</b>	<b>6.5</b>	<b>0.73</b>
Brussels-Capital Region	64.4	58	9.5	8.3	5.9	0.64
Flemish Region	66.4	471	14.2	9.6	6.9	0.77
Walloon Region	67.2	219	11.8	8.1	5.8	0.67

CR=Crude (all ages) Rate (N/100,000 person-years)  
ESR=Age-Standardised Rate, using the European Standard Population (N/100,000 person-years)  
WSR=Age-Standardised Rate, using the World Standard Population (N/100,000 person-years)  
CRi=Cumulative Risk for 0-74 years (%)



**Figure 1:** Ovarian Cancer: Age-standardised incidence rates by region, 2018



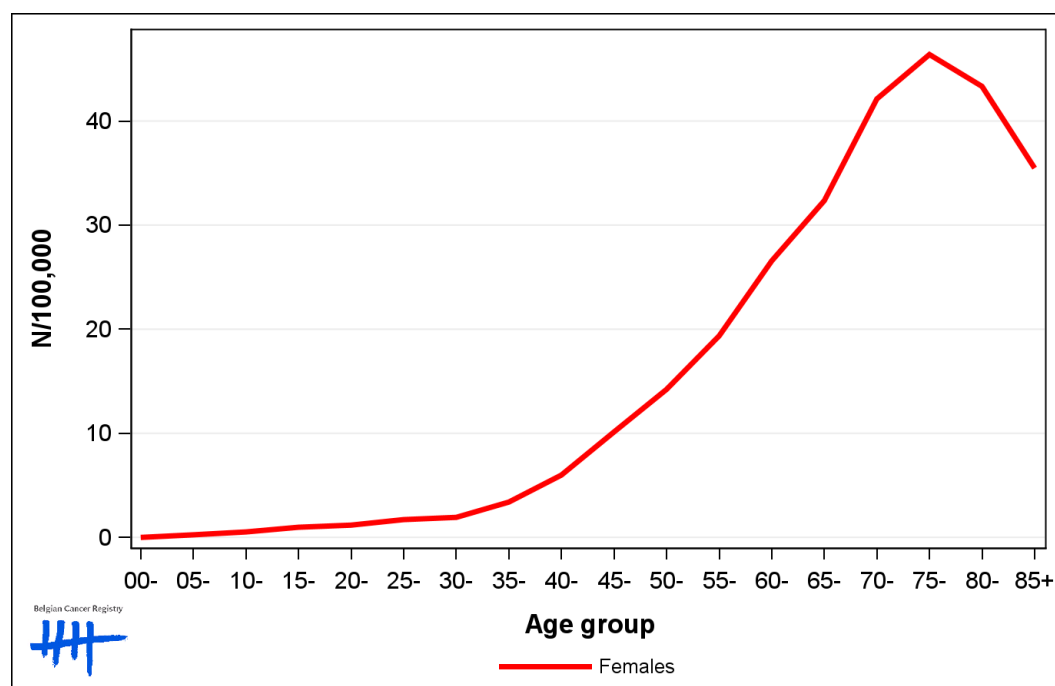
## 1.2. Age-specific incidence rates

**Table 2:** Ovarian Cancer: Age-specific incidence rates, crude rate (CR) and age-standardised incidence rates (ESR and WSR), Belgium 2018

	00-	05-	10-	15-	20-	25-	30-	35-	40-	45-	50-	55-	60-	65-	70-	75-	80-	85+	CR	ESR	WSR
Females	0.0	0.0	1.3	0.3	0.3	2.4	2.8	4.5	6.6	8.3	14.0	17.1	25.1	27.9	35.5	44.9	42.8	37.4	12.9	9.0	6.5

CR=Crude (all ages) Rate (N/100,000 person-years)  
 ESR=Age-Standardised Rate, using the European Standard Population (N/100,000 person-years)  
 WSR=Age-Standardised Rate, using the World Standard Population (N/100,000 person-years)

**Figure 2:** Ovarian Cancer: Age-specific incidence rates, 2014-2018



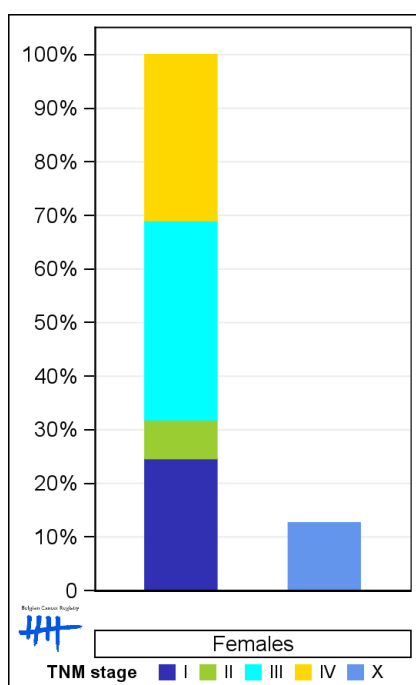
### 1.3. Combined stage

**Table 3:** Ovarian Cancer: Distribution of combined stage, Belgium 2018

	Stage I	Stage II	Stage III	Stage IV	Stage X	Stage NA	Total
<b>Females</b>							
N	157	46	237	197	92	19	748
%	21.0	6.1	31.7	26.3	12.3	2.5	100

Staging according to the TNM 8th edition (Ref: Brierley JD, Gospodarowicz MK, Wittekind Ch. TNM classification of malignant tumours, UICC 8th edition)  
 Combined TNM stage : compilation of pathological (pTNM) and clinical (cTNM) stage. pTNM prevails over cTNM, except when cTNM stage is IV  
 Stage X: diagnoses with an unknown stage  
 Stage NA: diagnoses with a histological diagnosis where no stage can be evaluated (Not Applicable)

**Figure 3:** Ovarian Cancer: Bar chart of known combined stage, Belgium 2018



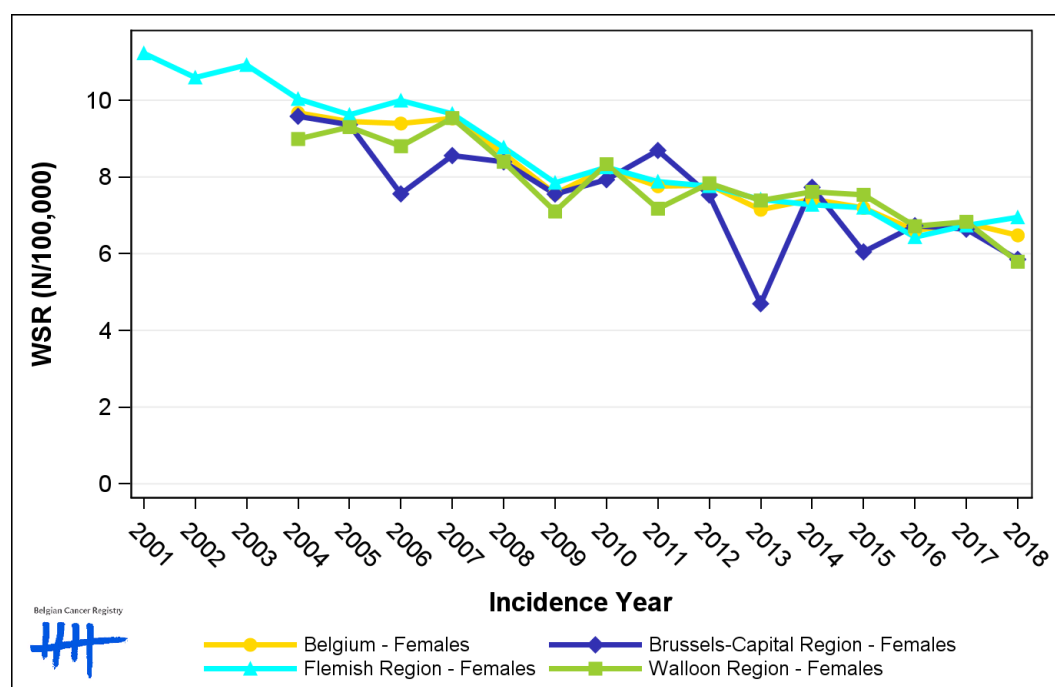
## 1.4. Trends in incidence

**Table 4:** Ovarian Cancer: Age-standardised incidence rates (WSR) and average annual percentage change (AAPC) by incidence year and region

Females	2004	2005	2006	2007	2008	2009	2010	2011	2012	2013	2014	2015	2016	2017	2018	AAPC	95% CI
<b>Belgium</b>	<b>9.7</b>	<b>9.4</b>	<b>9.4</b>	<b>9.5</b>	<b>8.6</b>	<b>7.6</b>	<b>8.2</b>	<b>7.8</b>	<b>7.8</b>	<b>7.1</b>	<b>7.4</b>	<b>7.2</b>	<b>6.6</b>	<b>6.8</b>	<b>6.5</b>	<b>-2.9</b>	<b>[-3.4; -2.4]</b>
Brussels-Capital Region	9.6	9.4	7.6	8.6	8.4	7.6	7.9	8.7	7.5	4.7	7.7	6.0	6.7	6.6	5.9	-3.1	[-4.8; -1.4]
Flemish Region	10.0	9.6	10.0	9.6	8.8	7.8	8.3	7.9	7.8	7.4	7.3	7.2	6.4	6.7	6.9	-3.1	[-3.7; -2.5]
Walloon Region	9.0	9.3	8.8	9.5	8.4	7.1	8.3	7.2	7.8	7.4	7.6	7.5	6.7	6.8	5.8	-2.6	[-3.5; -1.8]

WSR=Age-Standardised Rate, using the World Standard Population (N/100,000 person-years)  
AAPC = Average Annual Percentage Change over the 2004-2018 period

**Figure 4:** Ovarian Cancer: Age-standardised incidence rates (WSR) by incidence year and region



## 1.5. Incidence by broad age groups

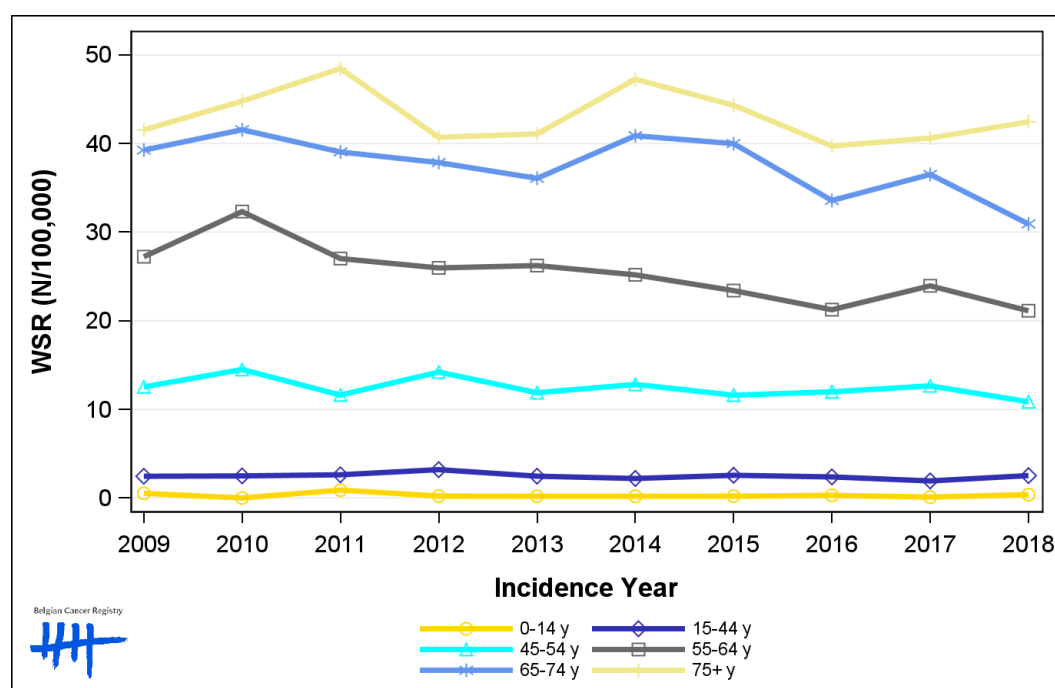
**Table 5:** Ovarian Cancer: Number of new diagnoses and age-standardised incidence rates (WSR) by broad age groups and incidence year, Belgium

	N										WSR									
	2009	2010	2011	2012	2013	2014	2015	2016	2017	2018	2009	2010	2011	2012	2013	2014	2015	2016	2017	2018
<b>Females</b>																				
All ages	781	859	822	799	771	832	802	733	777	748	7.6	8.2	7.8	7.8	7.1	7.4	7.2	6.6	6.8	6.5
0-14 y	5	0	9	2	2	2	2	3	1	4	0.5	0.0	0.9	0.2	0.2	0.2	0.2	0.3	<0.1	0.4
15-44 y	62	59	61	71	60	52	59	55	46	62	2.4	2.5	2.6	3.2	2.5	2.2	2.6	2.4	1.9	2.5
45-54 y	99	117	94	116	98	103	95	97	102	88	12.5	14.5	11.6	14.2	11.9	12.8	11.6	12.0	12.7	10.9
55-64 y	176	214	183	178	181	176	165	154	174	156	27.2	32.3	27.0	26.0	26.2	25.2	23.4	21.2	23.9	21.1
65-74 y	197	207	195	192	187	216	216	186	212	184	39.3	41.6	39.0	37.9	36.1	40.9	40.0	33.6	36.5	30.9
75+ y	242	262	280	240	243	283	265	238	242	254	41.5	44.8	48.5	40.7	41.1	47.3	44.3	39.7	40.6	42.5

N=Number of invasive tumours

WSR=Age-Standardised Rate, using the World Standard Population (N/100,000 person-years)

**Figure 5:** Ovarian Cancer: Age-standardised incidence rates (WSR) versus incidence year by broad age groups, Belgium

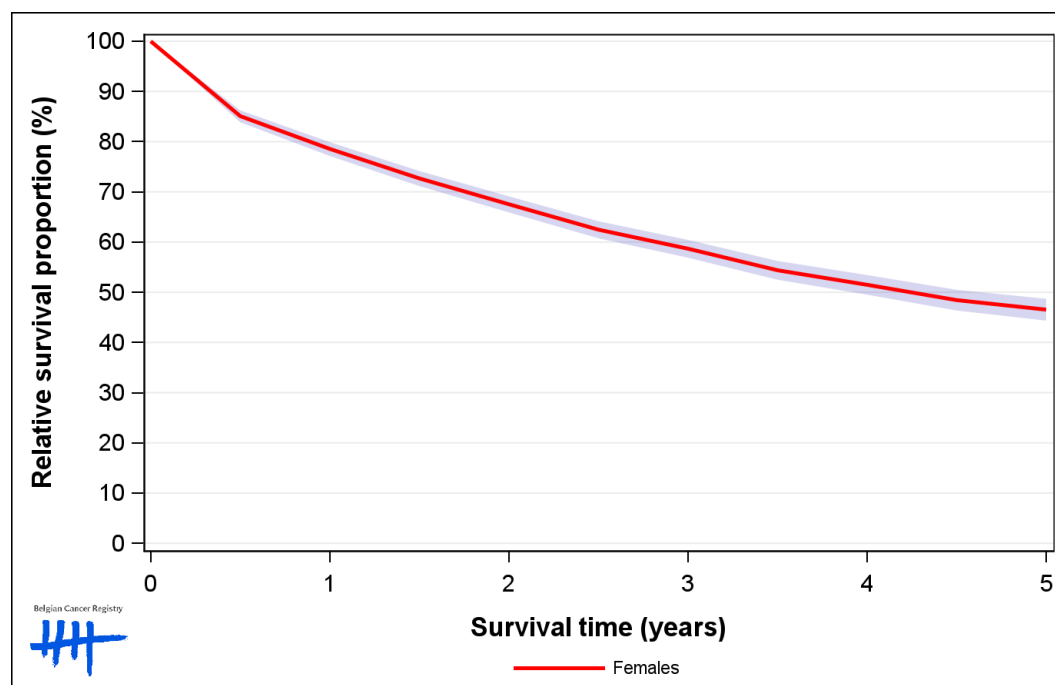


## 2. Relative survival

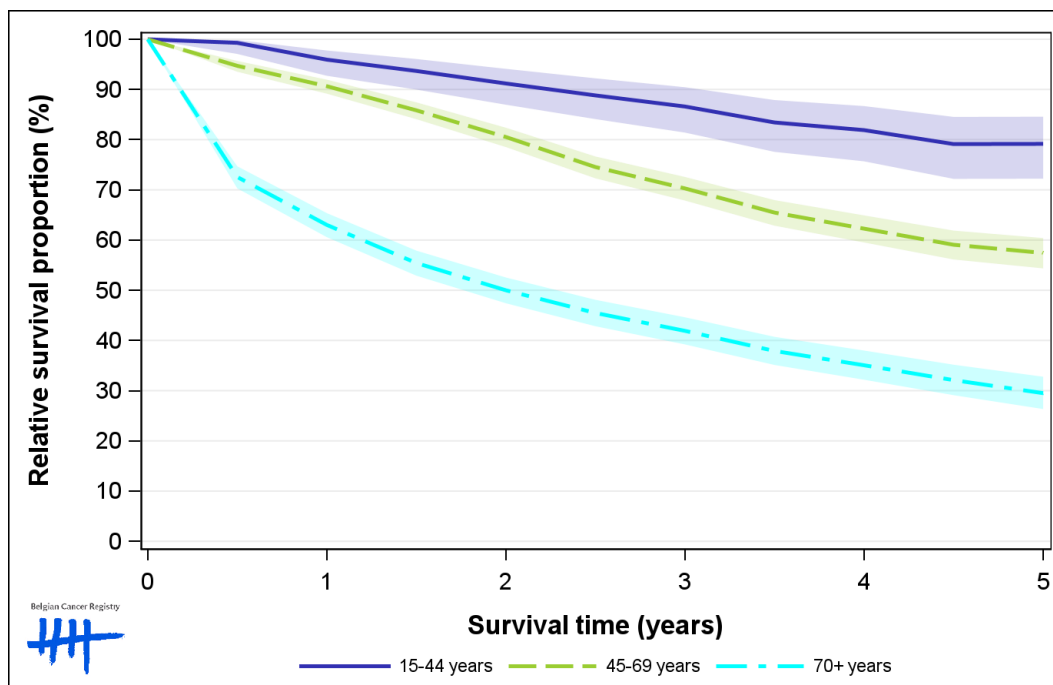
**Table 6:** Ovarian Cancer: 5-year relative survival proportion by age group and region, Belgium 2014-2018

	5-year relative survival 2014-2018 (%)		
	Females		
	N at risk	estimate	95% CI
<b>Overall</b>	3,859	46.1	[44.0, 48.3]
<b>Age group</b>			
15-44 years	270	78.6	[71.4, 84.3]
45-69 years	1,805	56.9	[53.9, 60.0]
70+ years	1,784	28.8	[25.8, 32.1]
<b>Region</b>			
Brussels-Capital Region	308	51.0	[42.8, 59.1]
Flemish Region	2,339	47.1	[44.3, 49.9]
Walloon Region	1,212	43.1	[39.3, 46.9]

**Figure 6:** Ovarian Cancer: relative survival proportion, Belgium 2014-2018



**Figure 7:** Ovarian Cancer: relative survival proportion by age group, Belgium 2014-2018



**Figure 8:** Ovarian Cancer: relative survival proportion by region, Belgium 2014-2018

