



Belgian Cancer Registry



Cancer Fact Sheet **Oesophagus Cancer**

ICD10 : C15-16.0

Belgium 2018

1. Cancer Incidence

1.1. Number of new diagnoses and incidence rates

Table 1: Oesophageal cancer: Average age at diagnosis, number of new cancer diagnoses (N), crude rate (CR), age-standardised incidence rates (ESR and WSR) and cumulative risk by sex and region, 2018

Males	Age (years)	N	CR	ESR	WSR	CRi
Belgium	68.3	1,225	21.9	16.1	11.0	1.42
Brussels-Capital Region	67.0	67	11.4	12.0	8.2	1.11
Flemish Region	69.2	758	23.4	16.0	10.8	1.35
Walloon Region	66.7	400	22.6	17.3	12.1	1.62

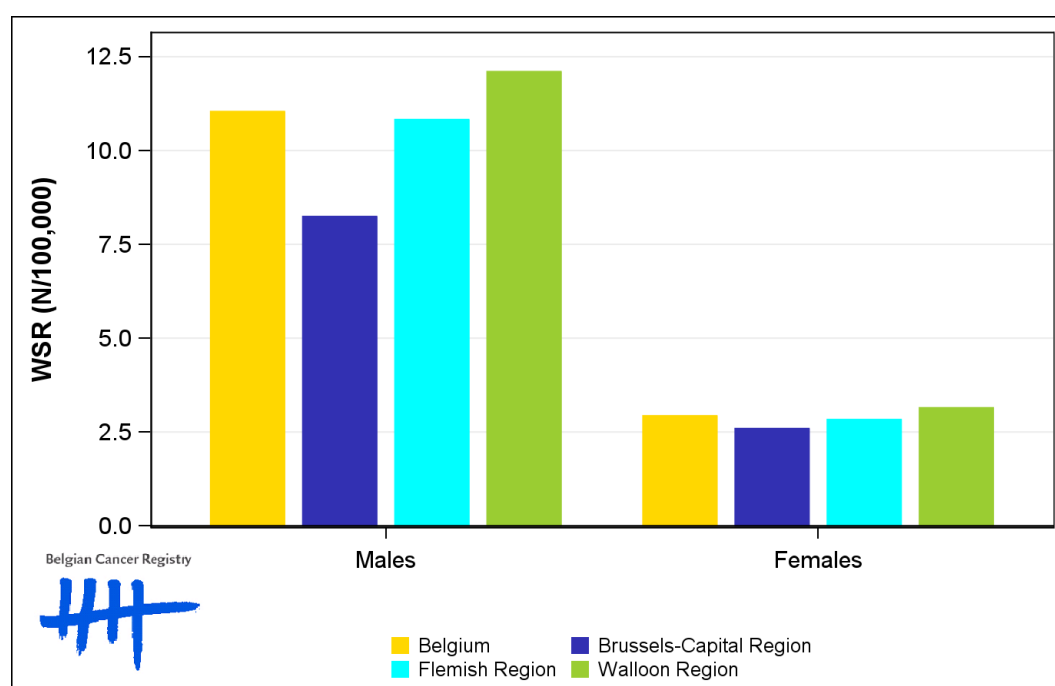
Females	Age (years)	N	CR	ESR	WSR	CRi
Belgium	71.3	405	7.0	4.3	2.9	0.37
Brussels-Capital Region	70.2	30	4.9	3.8	2.6	0.26
Flemish Region	71.8	240	7.2	4.2	2.8	0.36
Walloon Region	70.7	135	7.3	4.6	3.1	0.41

CR=Crude (all ages) Rate (N/100,000 person-years)
 ESR=Age-Standardised Rate, using the European Standard Population (N/100,000 person-years)
 WSR=Age-Standardised Rate, using the World Standard Population (N/100,000 person-years)
 CRi=Cumulative Risk for 0-74 years (%)

Belgian Cancer Registry



Figure 1: Oesophageal cancer: Age-standardised incidence rates by sex and region, 2018



1.2. Age-specific incidence rates

Table 2: Oesophageal cancer: Age-specific incidence rates, crude rate (CR) and age-standardised incidence rates (ESR and WSR) by sex, Belgium 2018

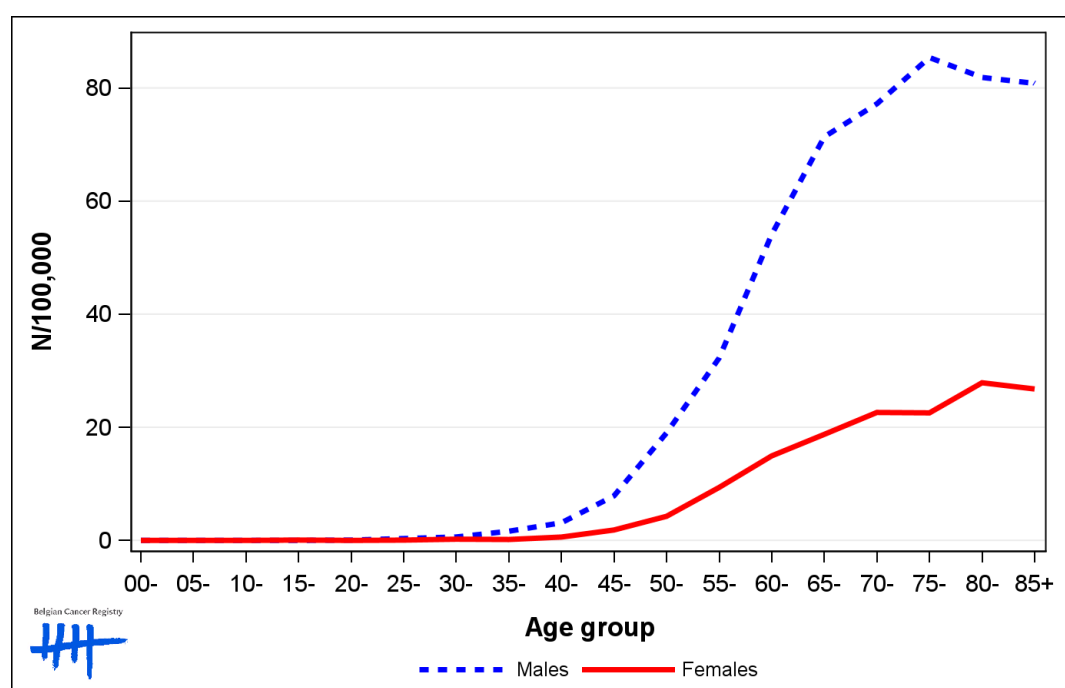
	00-	05-	10-	15-	20-	25-	30-	35-	40-	45-	50-	55-	60-	65-	70-	75-	80-	85+	CR	ESR	WSR
Males	0.0	0.0	0.0	0.0	0.0	0.5	0.3	0.8	3.8	7.6	20.7	29.4	53.6	78.9	89.8	87.1	82.9	88.5	21.9	16.1	11.0
Females	0.0	0.0	0.0	0.0	0.0	0.0	0.0	0.0	0.6	1.8	4.5	9.5	17.2	15.8	25.2	23.6	31.6	24.9	7.0	4.3	2.9

CR=Crude (all ages) Rate (N/100,000 person-years)

ESR=Age-Standardised Rate, using the European Standard Population (N/100,000 person-years)

WSR=Age-Standardised Rate, using the World Standard Population (N/100,000 person-years)

Figure 2: Oesophageal cancer: Age-specific incidence rates by sex, 2014-2018



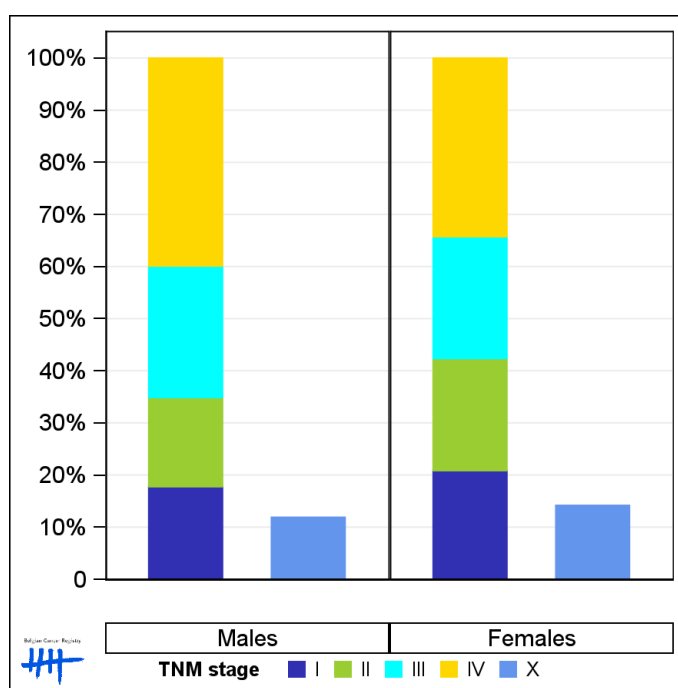
1.3. Combined stage

Table 3: Oesophageal cancer: Distribution of combined stage by sex, Belgium 2018

	Stage I	Stage II	Stage III	Stage IV	Stage X	Stage NA	Total
Males							
N	182	175	258	408	138	64	1,225
%	14.9	14.3	21.1	33.3	11.3	5.2	100
Females							
N	67	69	75	110	53	31	405
%	16.5	17.0	18.5	27.2	13.1	7.7	100

Staging according to the TNM 8th edition (Ref: Brierley JD, Gospodarowicz MK, Wittekind Ch. TNM classification of malignant tumours, UICC 8th edition)
 Combined TNM stage : compilation of pathological (pTNM) and clinical (cTNM) stage. pTNM prevails over cTNM, except when cTNM stage is IV
 Stage X: diagnoses with an unknown stage
 Stage NA: diagnoses with a histological diagnosis where no stage can be evaluated (Not Applicable)

Figure 3: Oesophageal cancer: Bar chart of known combined stage by sex, Belgium 2018



1.4. Trends in incidence

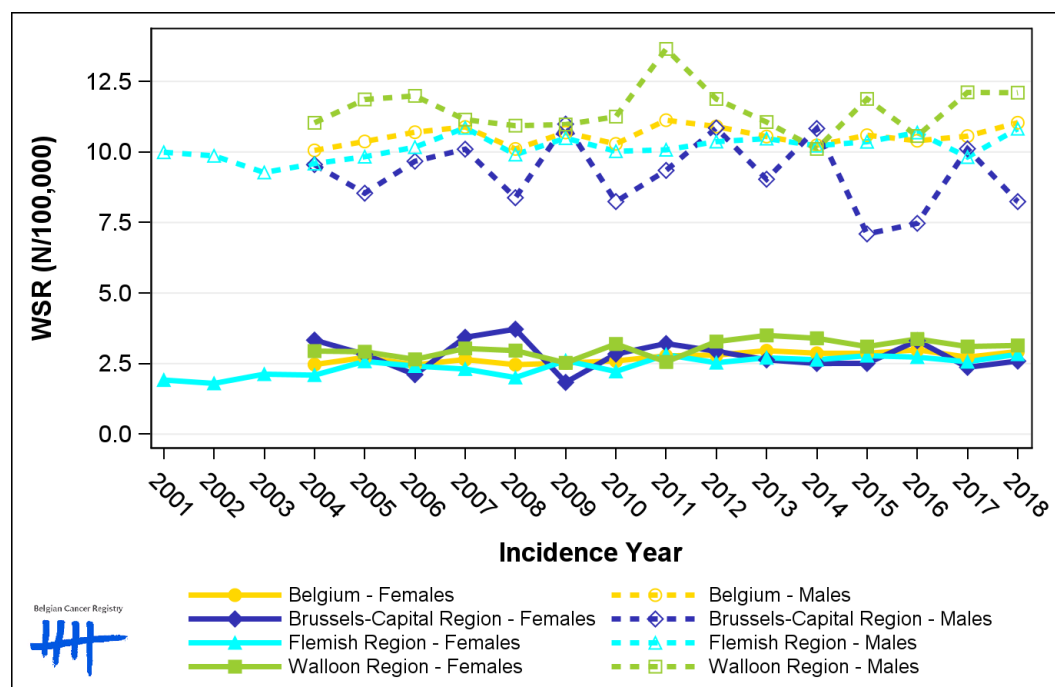
Table 4: Oesophageal cancer: Age-standardised incidence rates (WSR) and average annual percentage change (AAPC) by incidence year, sex and region

Males	2004	2005	2006	2007	2008	2009	2010	2011	2012	2013	2014	2015	2016	2017	2018	AAPC	95% CI
Belgium	10.1	10.4	10.7	10.9	10.1	10.7	10.3	11.1	10.9	10.5	10.2	10.6	10.4	10.6	11.0	0.2	[-0.2; 0.6]
Brussels-Capital Region	9.6	8.5	9.7	10.1	8.4	11.0	8.2	9.3	10.9	9.0	10.8	7.1	7.5	10.1	8.2	-0.7	[-2.5; 1.0]
Flemish Region	9.6	9.8	10.2	10.9	9.9	10.5	10.0	10.1	10.4	10.5	10.2	10.4	10.7	9.8	10.8	0.4	[-0.1; 0.8]
Walloon Region	11.0	11.9	12.0	11.1	10.9	11.0	11.3	13.7	11.9	11.1	10.1	11.9	10.6	12.1	12.1	0.0	[-0.9; 1.0]

Females	2004	2005	2006	2007	2008	2009	2010	2011	2012	2013	2014	2015	2016	2017	2018	AAPC	95% CI
Belgium	2.5	2.7	2.5	2.6	2.5	2.5	2.6	2.8	2.8	3.0	2.9	2.9	3.0	2.7	2.9	1.2	[0.6; 1.8]
Brussels-Capital Region	3.3	2.8	2.1	3.4	3.7	1.8	2.8	3.2	2.9	2.6	2.5	2.5	3.3	2.4	2.6	-0.8	[-3.3; 1.7]
Flemish Region	2.1	2.6	2.4	2.3	2.0	2.6	2.2	2.8	2.5	2.7	2.6	2.8	2.7	2.6	2.8	1.6	[0.5; 2.7]
Walloon Region	2.9	2.9	2.7	3.0	3.0	2.5	3.2	2.6	3.3	3.5	3.4	3.1	3.4	3.1	3.1	1.2	[0.0; 2.3]

WSR=Age-Standardised Rate, using the World Standard Population (N/100,000 person-years)
 AAPC = Average Annual Percentage Change over the 2004-2018 period

Figure 4: Oesophageal cancer: Age-standardised incidence rates (WSR) by incidence year, sex and region



1.5. Incidence by broad age groups

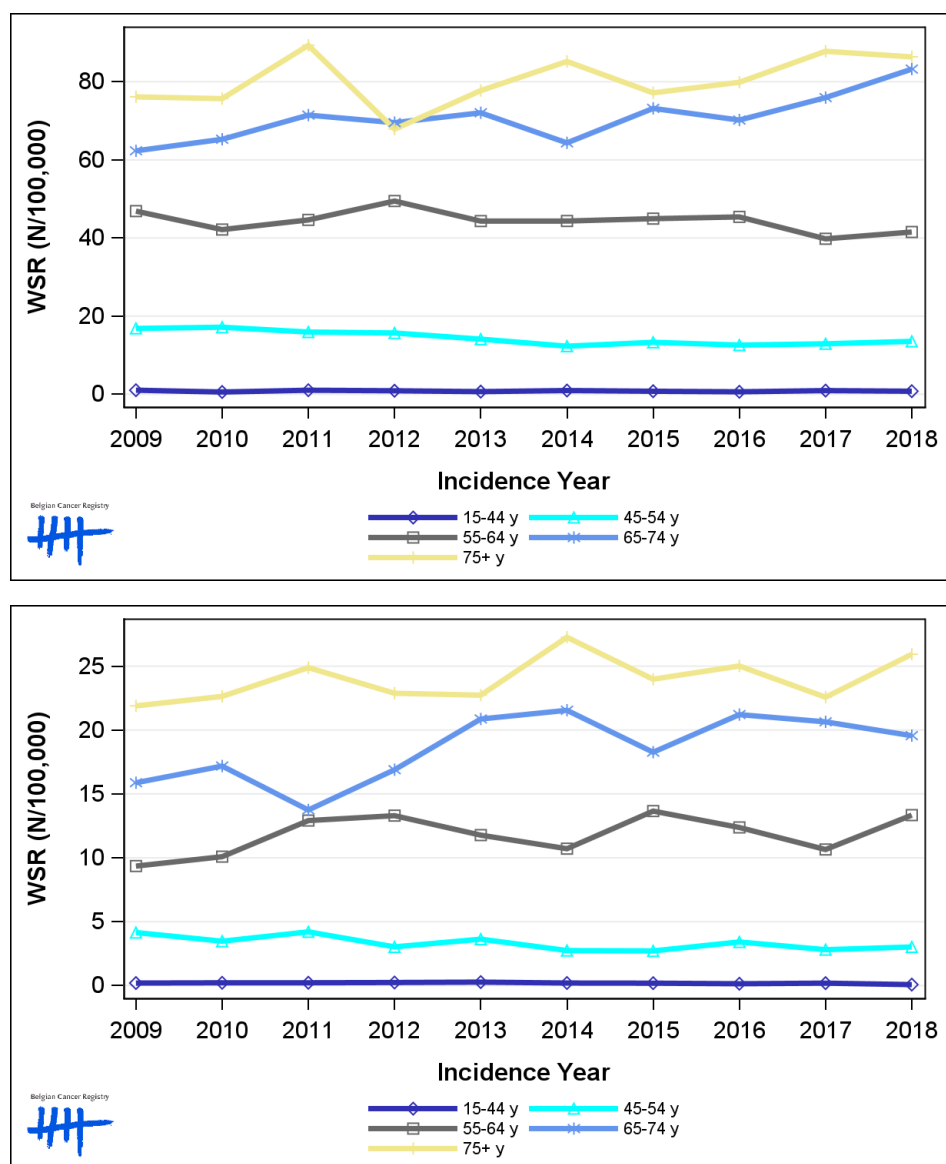
Table 5: Oesophageal cancer: Number of new diagnoses and age-standardised incidence rates (WSR) by broad age groups and incidence year by sex, Belgium

	N										WSR									
	2009	2010	2011	2012	2013	2014	2015	2016	2017	2018	2009	2010	2011	2012	2013	2014	2015	2016	2017	2018
Males																				
All ages	989	986	1,087	1,050	1,068	1,066	1,099	1,112	1,153	1,225	10.7	10.3	11.1	10.9	10.5	10.2	10.6	10.4	10.6	11.0
0-14 y	0	0	0	0	0	0	0	0	0	0	0.0	0.0	0.0	0.0	0.0	0.0	0.0	0.0	0.0	0.0
15-44 y	28	16	29	25	18	25	21	17	24	20	1.0	0.6	1.0	0.9	0.7	1.0	0.8	0.6	0.9	0.8
45-54 y	135	141	133	131	119	105	111	108	109	115	16.9	17.2	15.9	15.7	14.1	12.3	13.3	12.6	12.9	13.5
55-64 y	297	274	298	330	300	302	310	318	282	299	46.9	42.2	44.6	49.5	44.3	44.4	45.0	45.4	39.8	41.5
65-74 y	270	285	309	312	334	305	356	352	396	449	62.3	65.3	71.5	69.5	72.1	64.4	73.2	70.2	75.9	83.2
75+ y	259	270	318	252	297	329	301	317	342	342	76.1	75.7	89.3	67.9	77.7	85.2	77.2	79.9	87.8	86.4
Females																				
All ages	306	322	348	358	370	386	375	395	368	405	2.5	2.6	2.8	2.8	3.0	2.9	2.9	3.0	2.7	2.9
0-14 y	0	0	0	0	0	0	0	0	0	0	0.0	0.0	0.0	0.0	0.0	0.0	0.0	0.0	0.0	0.0
15-44 y	5	6	6	6	7	5	5	3	5	2	0.2	0.2	0.2	0.2	0.3	0.2	0.2	0.1	0.2	<0.1
45-54 y	33	28	35	25	30	23	23	28	23	25	4.2	3.5	4.2	3.0	3.6	2.7	2.7	3.4	2.8	3.0
55-64 y	61	67	88	92	81	74	96	89	78	98	9.4	10.1	12.9	13.3	11.8	10.7	13.7	12.4	10.7	13.3
65-74 y	77	85	67	85	107	114	98	116	120	118	15.9	17.2	13.7	16.9	20.9	21.5	18.3	21.2	20.6	19.6
75+ y	130	136	152	150	145	170	153	159	142	162	21.9	22.6	24.9	22.9	22.7	27.3	24.0	25.0	22.6	25.9

N=Number of invasive tumours

WSR=Age-Standardised Rate, using the World Standard Population (N/100,000 person-years)

Figure 5: Oesophageal cancer: Age-standardised incidence rates (WSR) versus incidence year by broad age groups for males (top) and females (bottom), Belgium



2. Relative survival

Table 6: Oesophageal cancer: 5-year relative survival proportion by sex, age group and region, Belgium 2014-2018

	5-year relative survival 2014-2018 (%)					
	Males			Females		
	N at risk	estimate	95% CI	N at risk	estimate	95% CI
Overall	5,624	25.5	[24.0, 27.1]	1,914	23.8	[21.3, 26.5]
Age group						
15-59 years	1,255	34.1	[31.0, 37.3]	318	35.7	[29.2, 42.3]
60-74 years	2,745	25.7	[23.5, 28.1]	818	27.5	[23.6, 31.7]
75+ years	1,624	17.5	[14.9, 20.6]	778	14.4	[11.1, 18.3]
Region						
Brussels-Capital Region	343	31.2	[25.0, 37.8]	144	21.3	[13.6, 30.5]
Flemish Region	3,447	24.8	[22.9, 26.8]	1,096	24.8	[21.5, 28.3]
Walloon Region	1,834	25.7	[22.9, 28.7]	674	22.9	[18.8, 27.5]

Figure 6: Oesophageal cancer: relative survival proportion by sex, Belgium 2014-2018

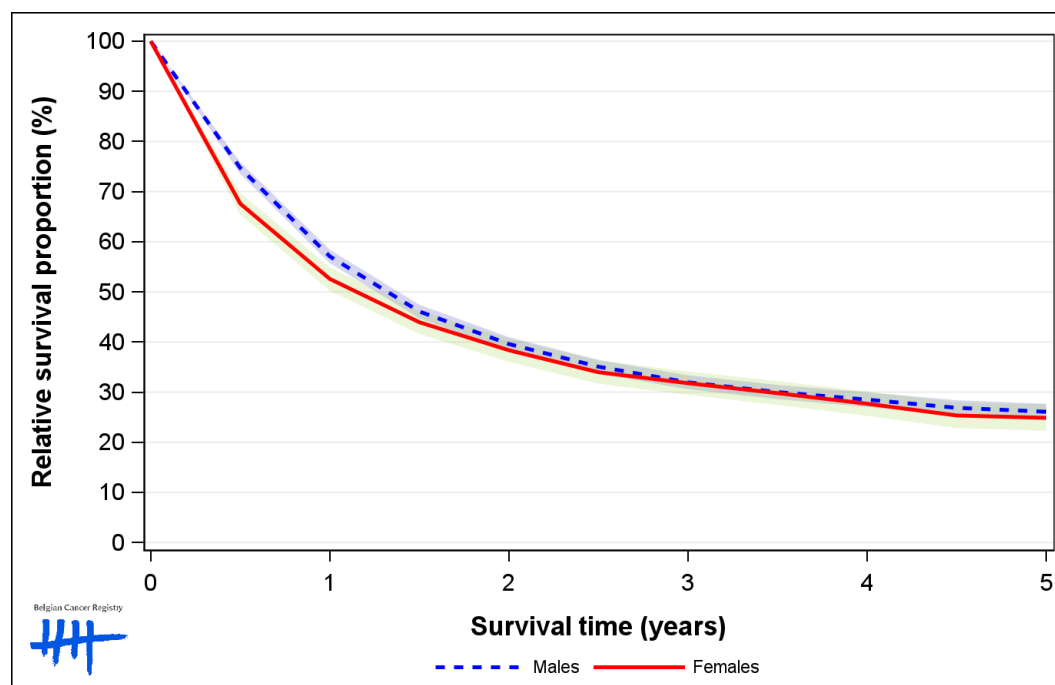


Figure 7: Oesophageal cancer: relative survival proportion by age group in males, Belgium 2014-2018

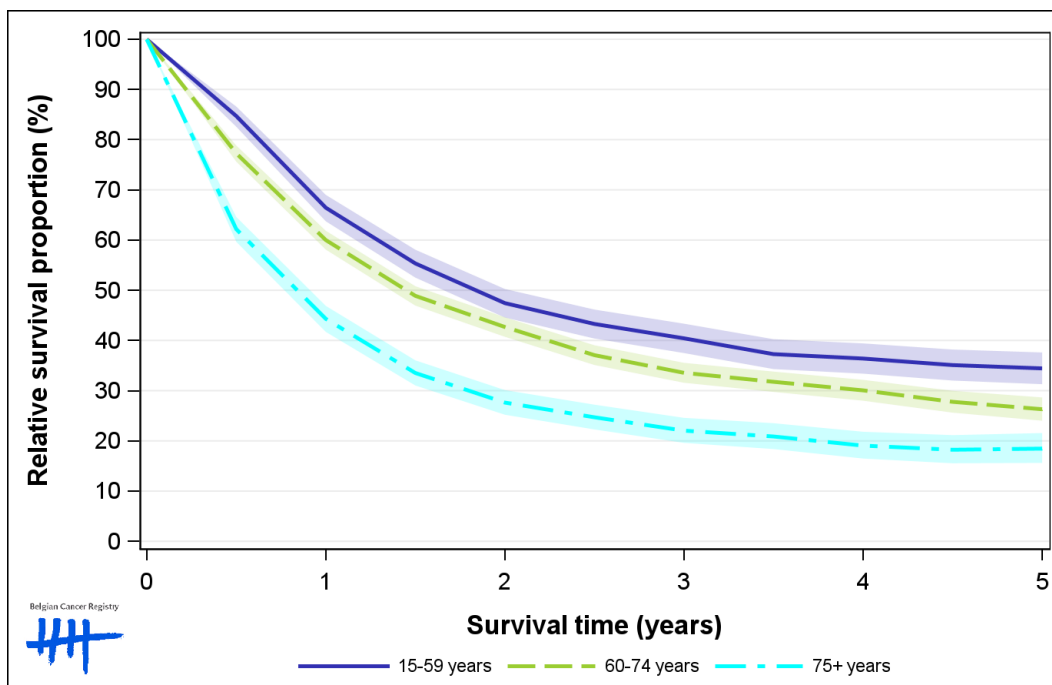


Figure 8: Oesophageal cancer: relative survival proportion by age group in females, Belgium 2014-2018

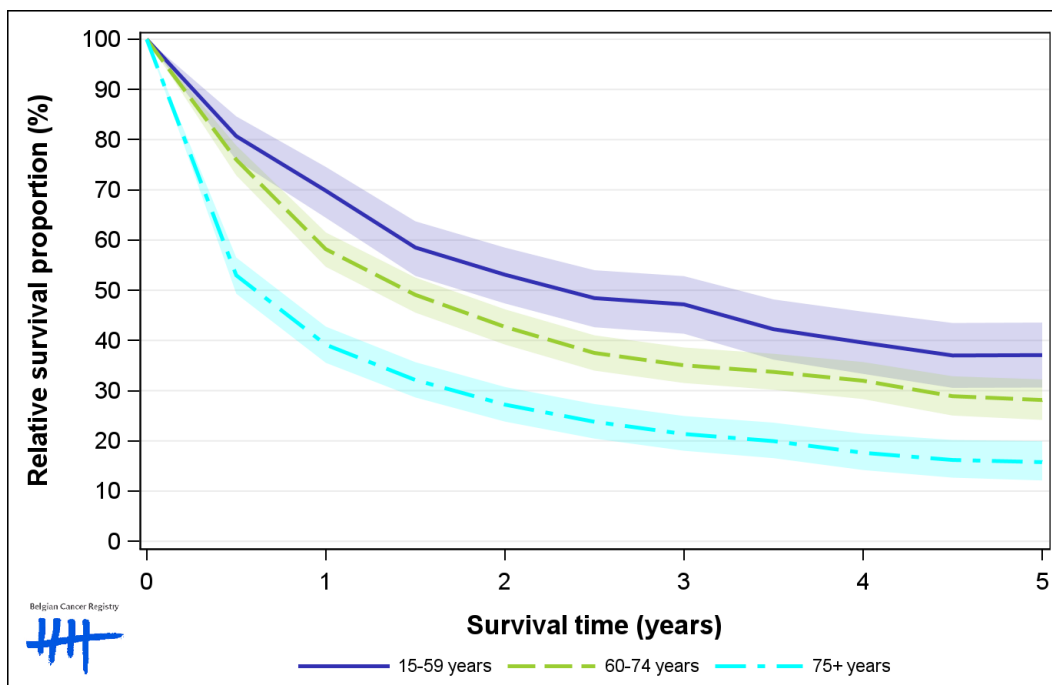


Figure 9: Oesophageal cancer: relative survival proportion by region in males, Belgium 2014-2018

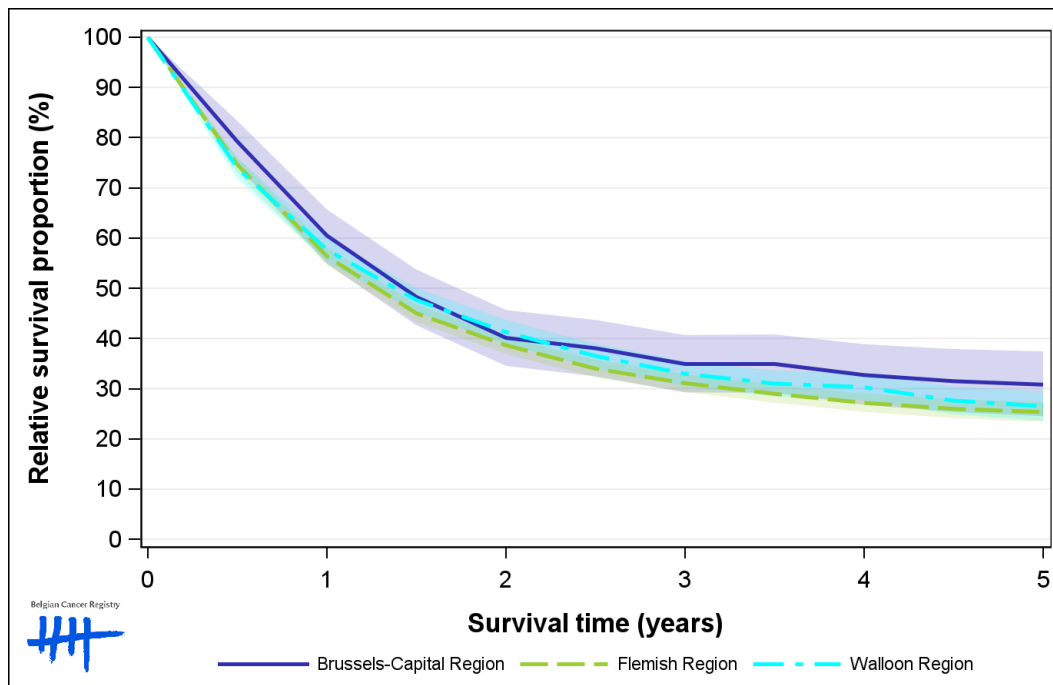


Figure 10: Oesophageal cancer: relative survival proportion by region in females, Belgium 2014-2018

