

Belgian Cancer Registry



Cancer Fact Sheet **Lung Cancer**

ICD10 : C34

Belgium 2018

1. Cancer Incidence

1.1. Number of new diagnoses and incidence rates

Table 1: Lung Cancer: Average age at diagnosis, number of new cancer diagnoses (N), crude rate (CR), age-standardised incidence rates (ESR and WSR) and cumulative risk by sex and region, 2018

Males	Age (years)	N	CR	ESR	WSR	CRi
Belgium	70.0	5,726	102.3	72.9	48.8	6.12
Brussels-Capital Region	67.1	414	70.6	73.6	50.7	6.52
Flemish Region	71.4	3,388	104.5	67.8	44.8	5.58
Walloon Region	68.3	1,924	108.7	81.7	55.6	7.01

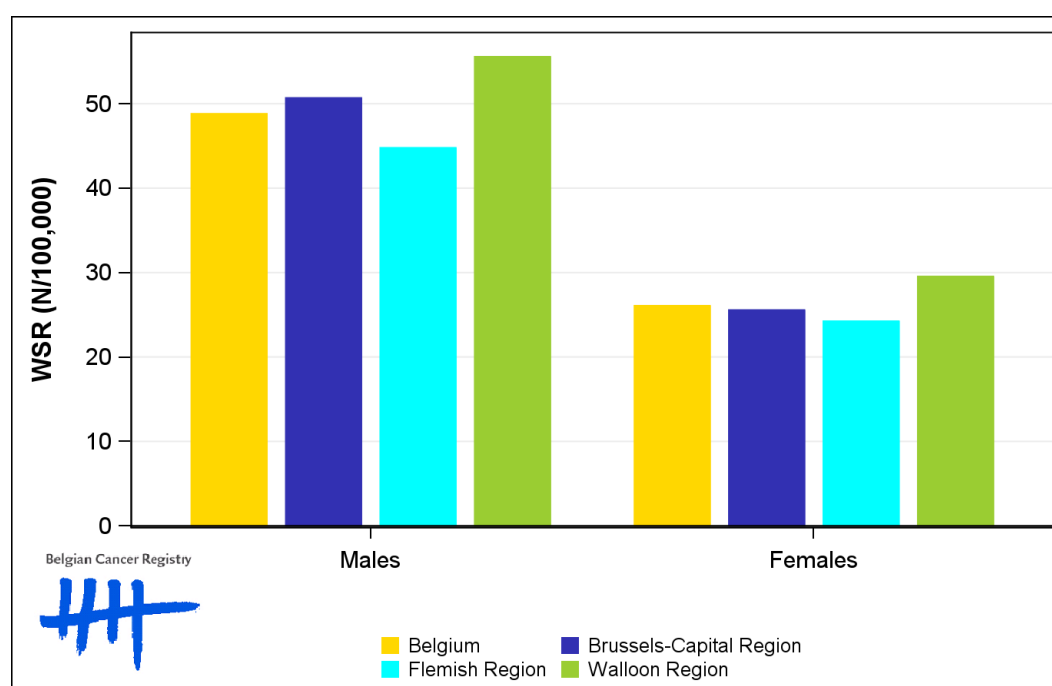
Females	Age (years)	N	CR	ESR	WSR	CRi
Belgium	67.7	3,089	53.5	37.1	26.1	3.42
Brussels-Capital Region	68.0	254	41.5	36.6	25.6	3.27
Flemish Region	68.1	1,725	52.1	34.5	24.2	3.21
Walloon Region	67.1	1,110	59.9	42.1	29.5	3.83

CR=Crude (all ages) Rate (N/100,000 person-years)
 ESR=Age-Standardised Rate, using the European Standard Population (N/100,000 person-years)
 WSR=Age-Standardised Rate, using the World Standard Population (N/100,000 person-years)
 CRi=Cumulative Risk for 0-74 years (%)

Belgian Cancer Registry



Figure 1: Lung Cancer: Age-standardised incidence rates by sex and region, 2018



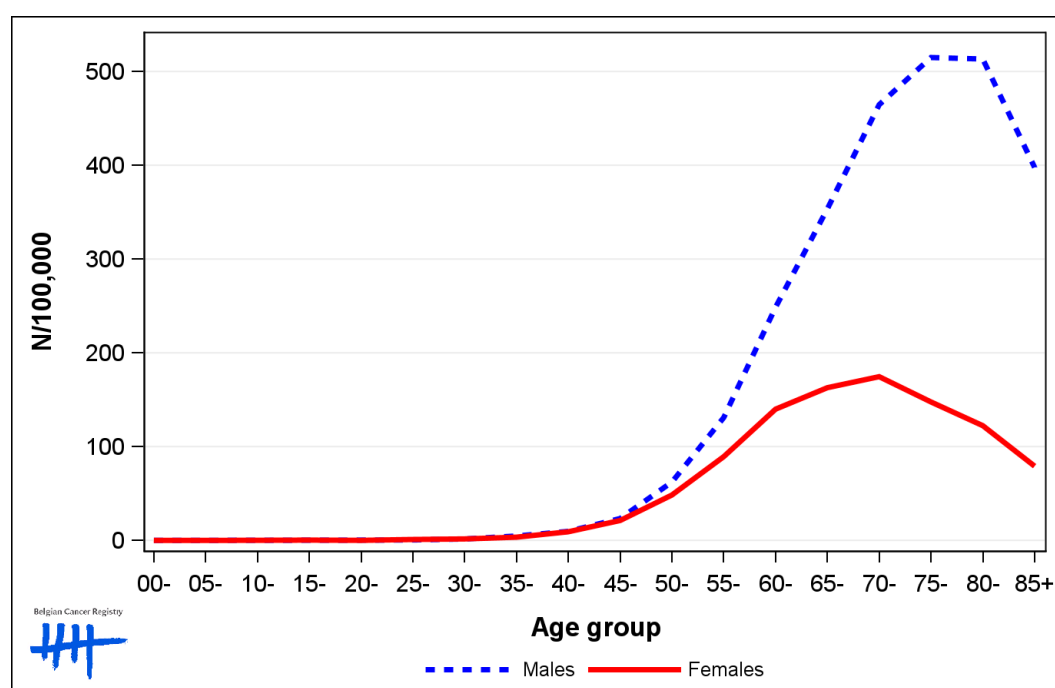
1.2. Age-specific incidence rates

Table 2: Lung Cancer: Age-specific incidence rates, crude rate (CR) and age-standardised incidence rates (ESR and WSR) by sex, Belgium 2018

	00-	05-	10-	15-	20-	25-	30-	35-	40-	45-	50-	55-	60-	65-	70-	75-	80-	85+	CR	ESR	WSR
Males	0.0	0.0	0.0	0.3	0.3	0.5	0.6	4.8	9.8	24.8	53.1	119.8	228.2	358.9	461.7	518.7	514.7	397.2	102.3	72.9	48.8
Females	0.3	0.0	0.0	0.0	0.0	1.6	1.1	4.0	9.7	18.6	44.6	84.0	145.8	188.5	197.5	178.5	127.8	89.5	53.5	37.1	26.1

CR=Crude (all ages) Rate (N/100,000 person-years)
 ESR=Age-Standardised Rate, using the European Standard Population (N/100,000 person-years)
 WSR=Age-Standardised Rate, using the World Standard Population (N/100,000 person-years)

Figure 2: Lung Cancer: Age-specific incidence rates by sex, 2014-2018



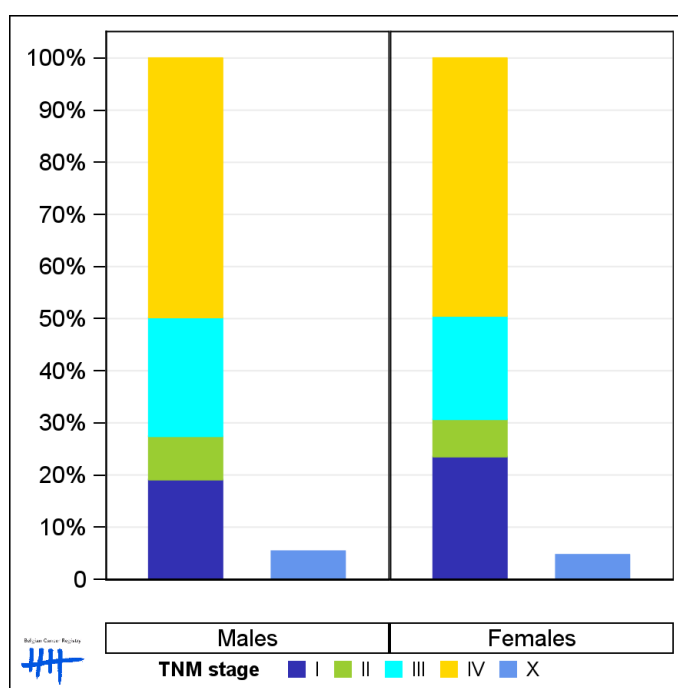
1.3. Combined stage

Table 3: Lung Cancer: Distribution of combined stage by sex, Belgium 2018

	Stage I	Stage II	Stage III	Stage IV	Stage X	Stage NA	Total
Males							
N	1,034	449	1,231	2,690	308	14	5,726
%	18.1	7.8	21.5	47.0	5.4	0.2	100
Females							
N	692	210	582	1,454	145	6	3,089
%	22.4	6.8	18.8	47.1	4.7	0.2	100

Staging according to the TNM 8th edition (Ref: Brierley JD, Gospodarowicz MK, Wittekind Ch. TNM classification of malignant tumours, UICC 8th edition)
 Combined TNM stage : compilation of pathological (pTNM) and clinical (cTNM) stage. pTNM prevails over cTNM, except when cTNM stage is IV
 Stage X: diagnoses with an unknown stage
 Stage NA: diagnoses with a histological diagnosis where no stage can be evaluated (Not Applicable)

Figure 3: Lung Cancer: Bar chart of known combined stage by sex, Belgium 2018



1.4. Trends in incidence

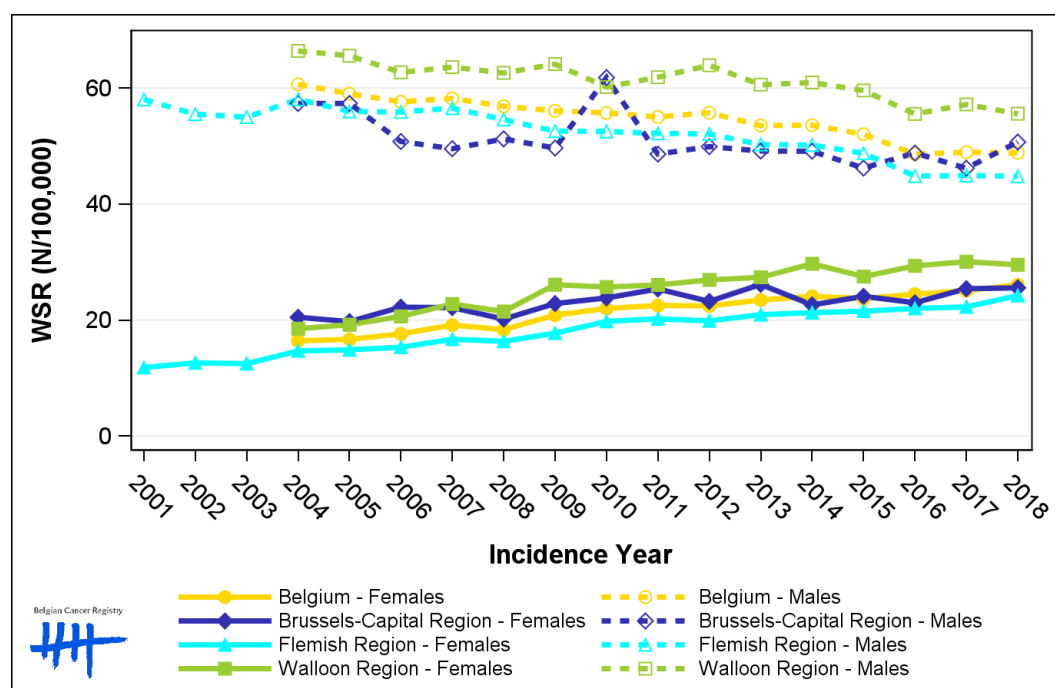
Table 4: Lung Cancer: Age-standardised incidence rates (WSR) and average annual percentage change (AAPC) by incidence year, sex and region

Males	2004	2005	2006	2007	2008	2009	2010	2011	2012	2013	2014	2015	2016	2017	2018	AAPC	95% CI
Belgium	60.6	59.0	57.6	58.2	56.8	56.1	55.7	55.0	55.7	53.5	53.6	52.0	48.6	48.9	48.8	-1.6	[-1.8; -1.4]
Brussels-Capital Region	57.3	57.3	50.8	49.5	51.2	49.7	61.8	48.6	49.9	49.1	49.1	46.2	48.8	46.2	50.7	-1.1	[-1.9; -0.2]
Flemish Region	58.1	55.9	55.9	56.5	54.6	52.6	52.5	52.2	52.1	50.3	50.2	48.8	44.8	44.9	44.8	-2.0	[-2.2; -1.7]
Walloon Region	66.4	65.6	62.7	63.6	62.6	64.1	60.2	61.9	63.9	60.6	60.9	59.6	55.5	57.2	55.6	-1.2	[-1.5; -0.9]

Females	2004	2005	2006	2007	2008	2009	2010	2011	2012	2013	2014	2015	2016	2017	2018	AAPC	95% CI
Belgium	16.4	16.7	17.6	19.1	18.4	20.9	22.0	22.5	22.4	23.5	24.1	23.7	24.5	25.1	26.1	3.4	[3.0; 3.7]
Brussels-Capital Region	20.5	19.7	22.2	22.2	20.2	22.9	23.8	25.4	23.2	26.2	22.6	24.1	23.0	25.4	25.6	1.5	[0.7; 2.3]
Flemish Region	14.7	14.9	15.3	16.7	16.3	17.8	19.8	20.2	19.9	20.9	21.3	21.5	22.0	22.3	24.2	3.6	[3.2; 4.0]
Walloon Region	18.5	19.2	20.6	22.8	21.5	26.1	25.7	26.1	26.9	27.4	29.7	27.5	29.4	30.1	29.5	3.6	[3.1; 4.1]

WSR=Age-Standardised Rate, using the World Standard Population (N/100,000 person-years)
AAPC = Average Annual Percentage Change over the 2004-2018 period

Figure 4: Lung Cancer: Age-standardised incidence rates (WSR) by incidence year, sex and region



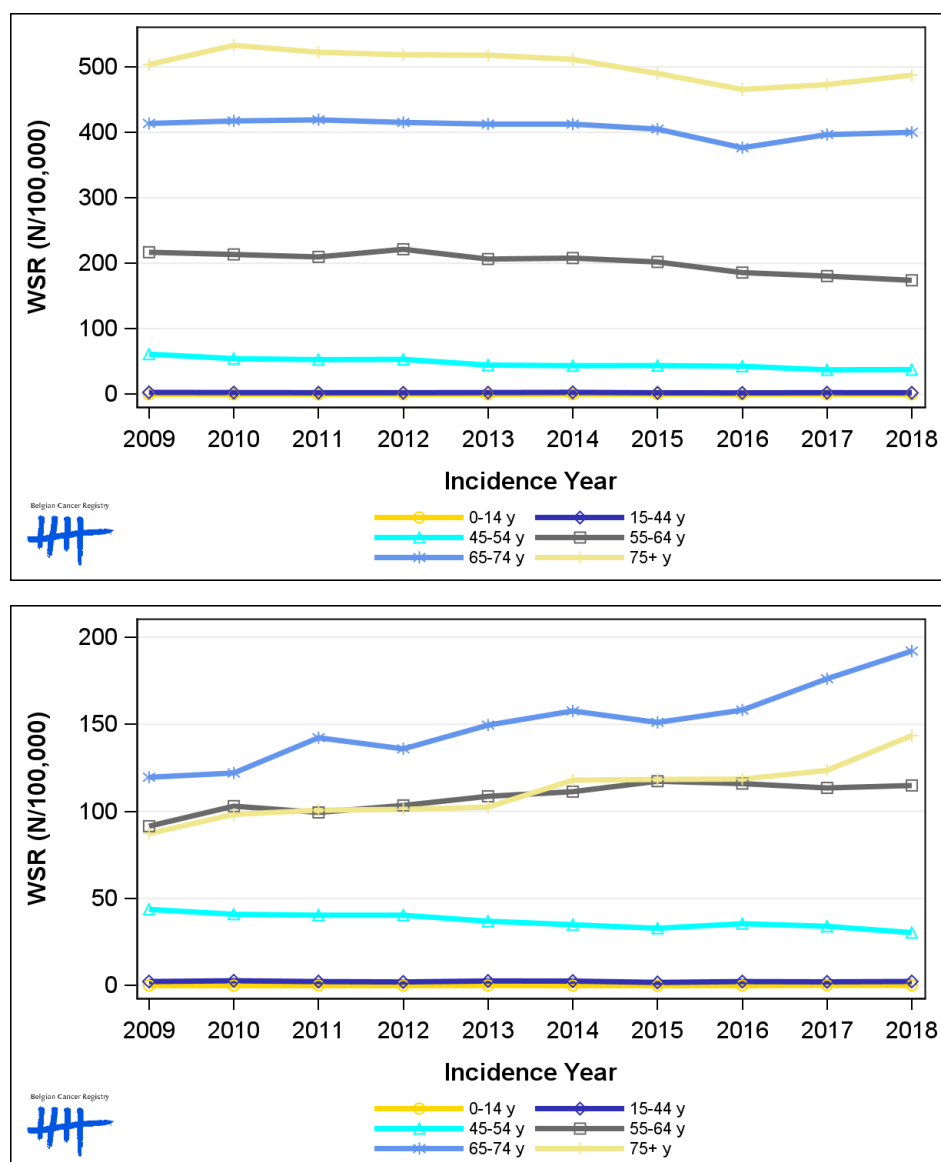
1.5. Incidence by broad age groups

Table 5: Lung Cancer: Number of new diagnoses and age-standardised incidence rates (WSR) by broad age groups and incidence year by sex, Belgium

	N										WSR									
	2009	2010	2011	2012	2013	2014	2015	2016	2017	2018	2009	2010	2011	2012	2013	2014	2015	2016	2017	2018
Males																				
All ages	5,511	5,655	5,646	5,812	5,714	5,794	5,726	5,447	5,601	5,726	56.1	55.7	55.0	55.7	53.5	53.6	52.0	48.6	48.9	48.8
0-14 y	0	0	0	1	0	1	2	0	1	0	0.0	0.0	0.0	<0.1	0.0	0.1	0.2	0.0	<0.1	0.0
15-44 y	77	70	63	62	69	76	59	55	65	60	2.9	2.6	2.4	2.3	2.6	2.9	2.2	2.1	2.5	2.3
45-54 y	493	446	439	448	377	371	374	367	317	316	61.2	54.4	52.8	53.3	44.6	43.6	43.8	42.7	37.3	37.7
55-64 y	1,376	1,382	1,392	1,474	1,390	1,411	1,384	1,292	1,278	1,251	216.9	213.5	209.7	221.4	206.5	208.0	202.0	185.8	180.5	174.0
65-74 y	1,798	1,839	1,847	1,889	1,916	1,961	1,974	1,893	2,080	2,170	413.6	417.4	419.1	415.2	412.6	412.6	405.0	376.4	396.6	400.0
75+ y	1,767	1,918	1,905	1,938	1,962	1,974	1,933	1,840	1,860	1,929	503.6	532.9	522.4	518.4	517.9	511.5	490.0	465.5	473.0	487.3
Females																				
All ages	2,074	2,240	2,341	2,364	2,493	2,657	2,660	2,742	2,873	3,089	20.9	22.0	22.5	22.4	23.5	24.1	23.7	24.5	25.1	26.1
0-14 y	0	0	0	0	1	0	0	0	2	1	0.0	0.0	0.0	0.0	<0.1	0.0	0.0	0.0	0.2	0.1
15-44 y	62	73	62	53	68	67	47	57	56	60	2.3	2.8	2.3	2.1	2.6	2.6	1.8	2.3	2.2	2.4
45-54 y	349	330	332	333	308	291	273	294	283	251	43.8	40.9	40.4	40.4	37.0	35.0	32.9	35.6	34.0	30.4
55-64 y	596	685	675	710	751	774	829	830	826	845	91.5	103.0	99.4	103.4	108.7	111.3	117.3	116.0	113.5	114.9
65-74 y	572	595	693	685	774	829	810	875	1,006	1,129	119.6	122.1	142.3	135.9	149.6	157.7	151.1	158.2	176.2	192.1
75+ y	495	557	579	583	591	696	701	686	700	803	87.3	98.3	100.7	101.2	102.5	118.0	118.4	118.6	123.6	143.6

N=Number of invasive tumours
WSR=Age-Standardised Rate, using the World Standard Population (N/100,000 person-years)

Figure 5: Lung Cancer: Age-standardised incidence rates (WSR) versus incidence year by broad age groups for males (top) and females (bottom), Belgium



2. Relative survival

Table 6: Lung Cancer: 5-year relative survival proportion by sex, age group and region, Belgium 2014-2018

	5-year relative survival 2014-2018 (%)					
	Males			Females		
	N at risk	estimate	95% CI	N at risk	estimate	95% CI
Overall	27,983	19.7	[19.1, 20.3]	13,867	27.8	[26.9, 28.9]
Age group						
15-49 years	765	27.2	[23.6, 31.0]	691	43.1	[38.7, 47.5]
50-64 years	7,806	24.2	[23.1, 25.5]	5,031	31.9	[30.3, 33.5]
65+ years	19,424	17.3	[16.6, 18.2]	8,150	23.7	[22.5, 25.1]
Region						
Brussels-Capital Region	1,910	20.5	[18.0, 23.2]	1,150	28.1	[24.8, 31.7]
Flemish Region	16,513	19.8	[19.0, 20.7]	7,570	27.6	[26.3, 29.0]
Walloon Region	9,561	19.3	[18.2, 20.4]	5,147	28.1	[26.5, 29.8]

Figure 6: Lung Cancer: relative survival proportion by sex, Belgium 2014-2018

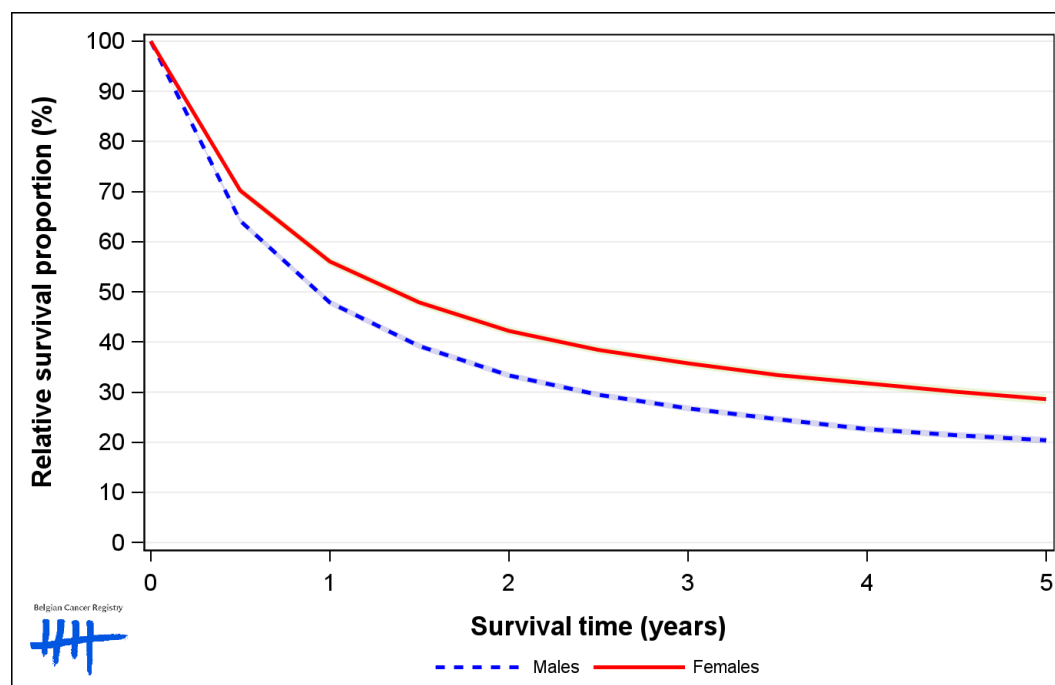


Figure 7: Lung Cancer: relative survival proportion by age group in males, Belgium 2014-2018

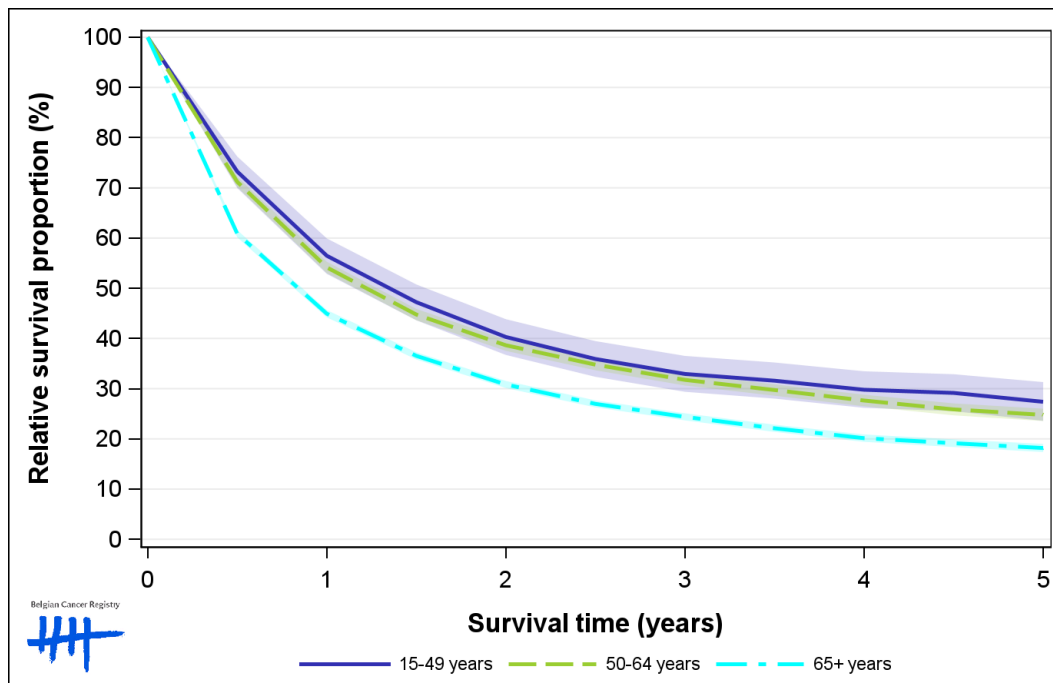


Figure 8: Lung Cancer: relative survival proportion by age group in females, Belgium 2014-2018

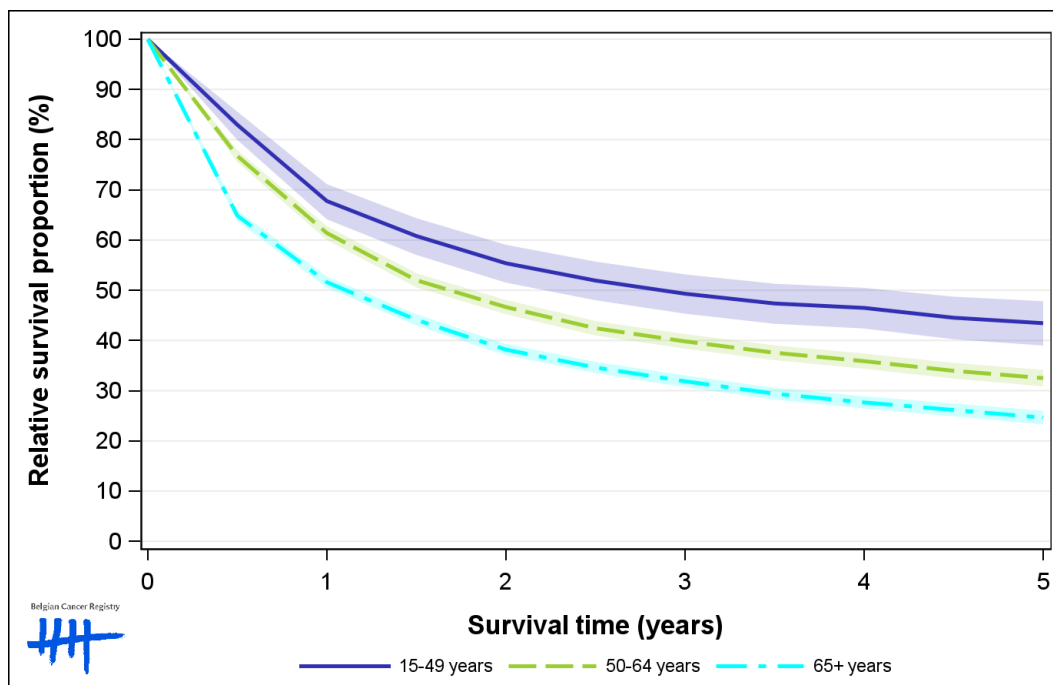


Figure 9: Lung Cancer: relative survival proportion by region in males, Belgium 2014-2018

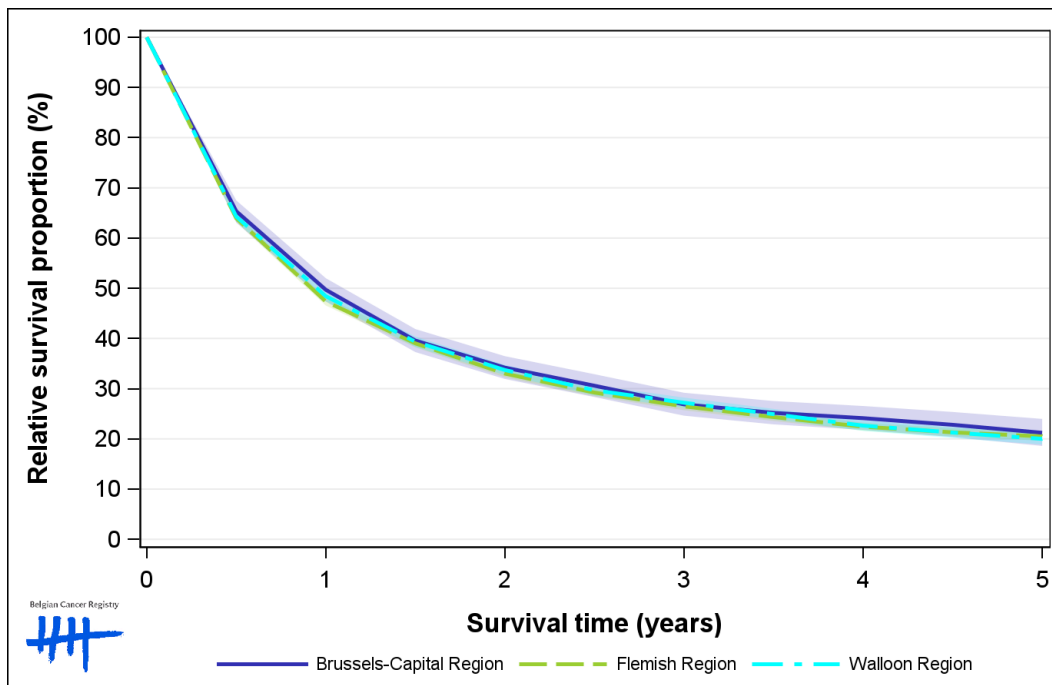


Figure 10: Lung Cancer: relative survival proportion by region in females, Belgium 2014-2018

