



Belgian Cancer Registry



Cancer Fact Sheet **Colorectal Cancer**

ICD10 : C18-20

Belgium 2018

1. Cancer Incidence

1.1. Number of new diagnoses and incidence rates

Table 1: Colorectal Cancer: Average age at diagnosis, number of new cancer diagnoses (N), crude rate (CR), age-standardised incidence rates (ESR and WSR) and cumulative risk by sex and region, 2018

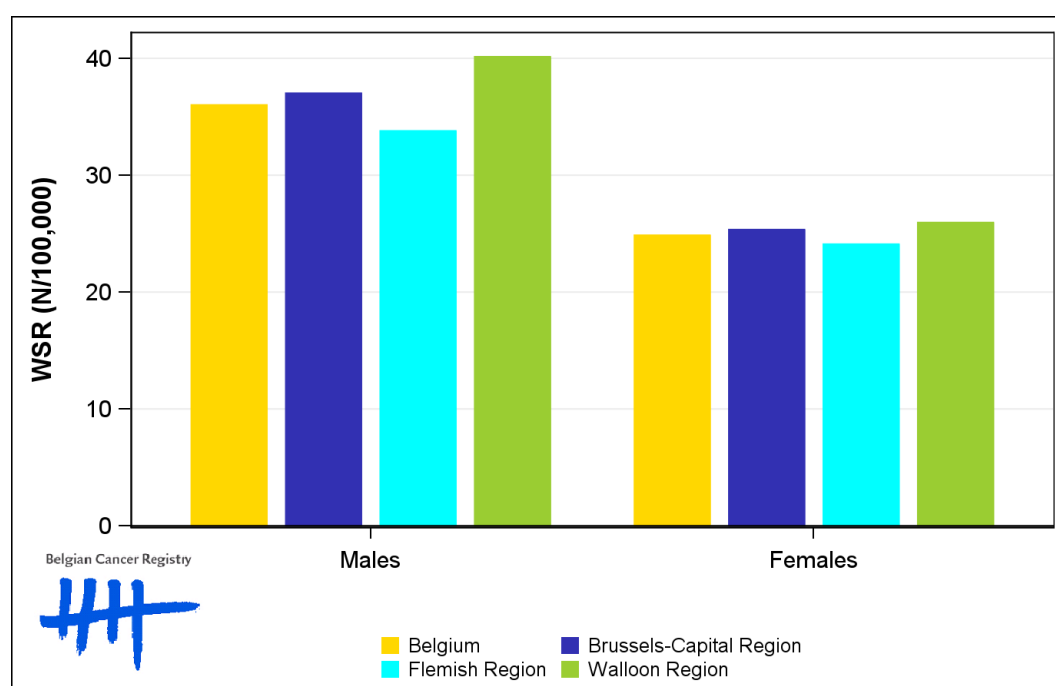
Males	Age (years)	N	CR	ESR	WSR	CRi
Belgium	70.3	4,288	76.6	54.1	36.0	4.21
Brussels-Capital Region	68.0	313	53.4	54.5	37.0	4.63
Flemish Region	71.2	2,557	78.9	51.1	33.8	3.84
Walloon Region	69.2	1,418	80.1	59.7	40.1	4.84

Females	Age (years)	N	CR	ESR	WSR	CRi
Belgium	71.9	3,572	61.8	36.7	24.9	2.77
Brussels-Capital Region	69.1	281	45.9	36.7	25.3	2.75
Flemish Region	72.6	2,133	64.4	35.7	24.1	2.66
Walloon Region	71.3	1,158	62.5	38.2	26.0	2.95

CR=Crude (all ages) Rate (N/100,000 person-years)
 ESR=Age-Standardised Rate, using the European Standard Population (N/100,000 person-years)
 WSR=Age-Standardised Rate, using the World Standard Population (N/100,000 person-years)
 CRi=Cumulative Risk for 0-74 years (%)



Figure 1: Colorectal Cancer: Age-standardised incidence rates by sex and region, 2018



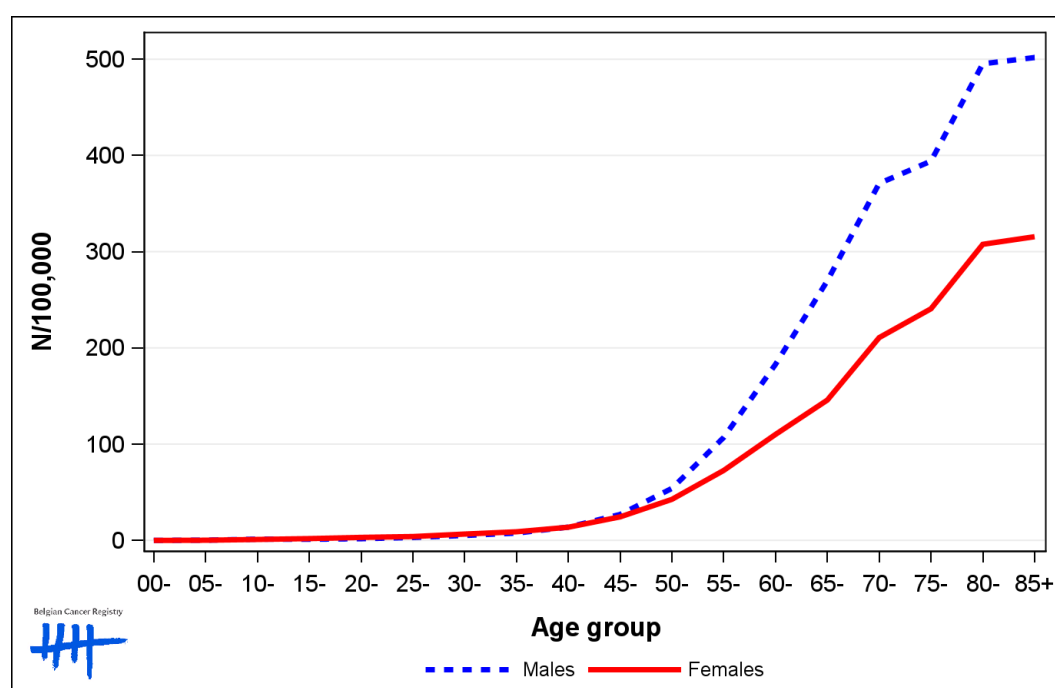
1.2. Age-specific incidence rates

Table 2: Colorectal Cancer: Age-specific incidence rates, crude rate (CR) and age-standardised incidence rates (ESR and WSR) by sex, Belgium 2018

	00-	05-	10-	15-	20-	25-	30-	35-	40-	45-	50-	55-	60-	65-	70-	75-	80-	85+	CR	ESR	WSR
Males	0.0	0.3	0.3	0.9	1.8	3.2	5.5	7.2	11.1	22.5	57.3	87.8	141.0	209.3	311.7	351.3	461.2	468.4	76.6	54.1	36.0
Females	0.0	0.3	1.0	1.0	3.3	4.9	8.5	7.5	11.4	22.2	48.9	60.5	89.5	120.4	182.4	213.7	325.7	311.3	61.8	36.7	24.9

CR=Crude (all ages) Rate (N/100,000 person-years)
 ESR=Age-Standardised Rate, using the European Standard Population (N/100,000 person-years)
 WSR=Age-Standardised Rate, using the World Standard Population (N/100,000 person-years)

Figure 2: Colorectal Cancer: Age-specific incidence rates by sex, 2014-2018



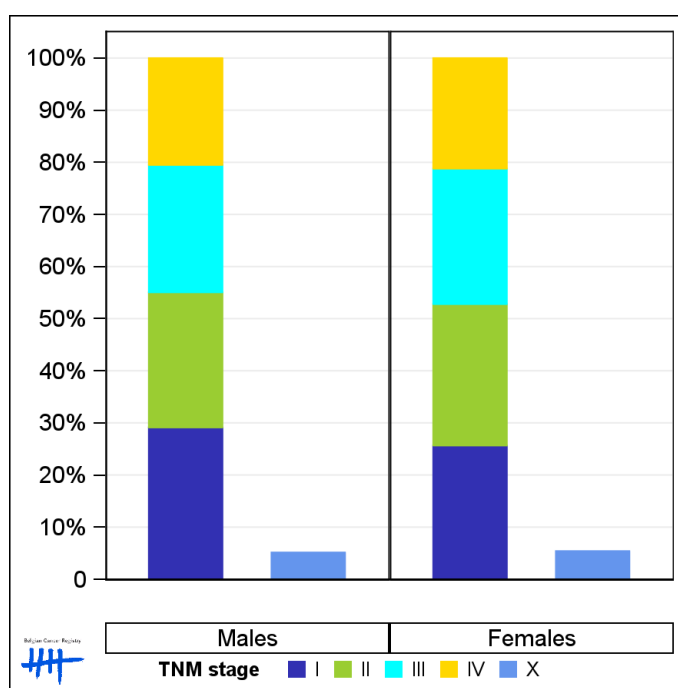
1.3. Combined stage

Table 3: Colorectal Cancer: Distribution of combined stage by sex, Belgium 2018

	Stage I	Stage II	Stage III	Stage IV	Stage X	Stage NA	Total
Males							
N	1,182	1,052	992	831	220	11	4,288
%	27.6	24.5	23.1	19.4	5.1	0.3	100
Females							
N	866	916	877	715	193	5	3,572
%	24.2	25.6	24.6	20.0	5.4	0.1	100

Staging according to the TNM 8th edition (Ref: Brierley JD, Gospodarowicz MK, Wittekind Ch. TNM classification of malignant tumours, UICC 8th edition)
 Combined TNM stage : compilation of pathological (pTNM) and clinical (cTNM) stage. pTNM prevails over cTNM, except when cTNM stage is IV
 Stage X: diagnoses with an unknown stage
 Stage NA: diagnoses with a histological diagnosis where no stage can be evaluated (Not Applicable)

Figure 3: Colorectal Cancer: Bar chart of known combined stage by sex, Belgium 2018



1.4. Trends in incidence

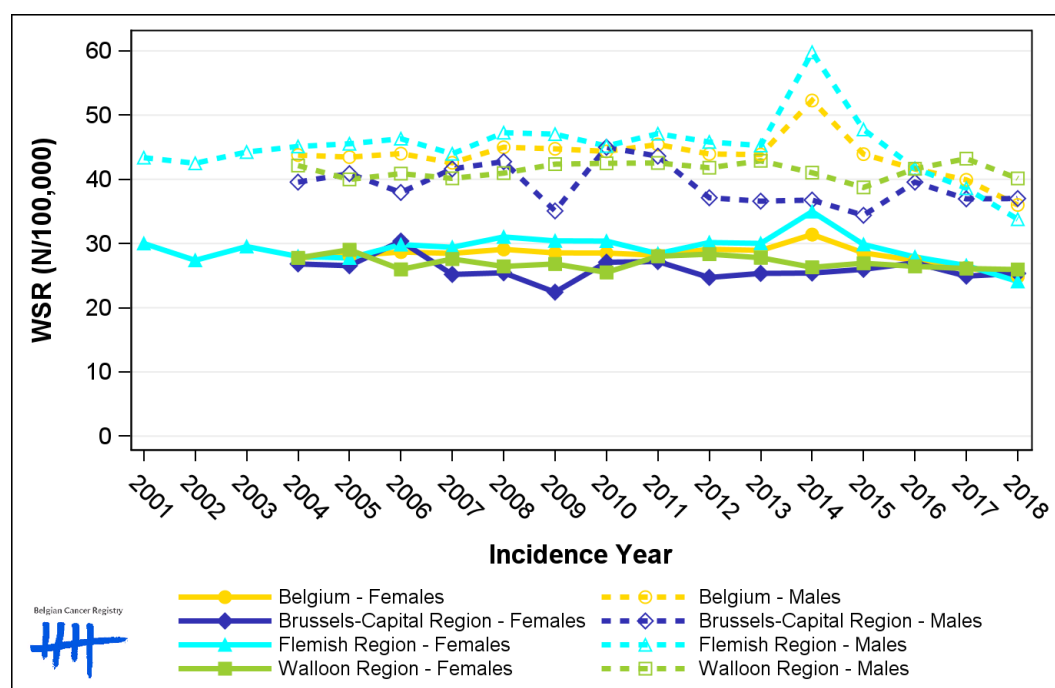
Table 4: Colorectal Cancer: Age-standardised incidence rates (WSR) and average annual percentage change (AAPC) by incidence year, sex and region

Males	2004	2005	2006	2007	2008	2009	2010	2011	2012	2013	2014	2015	2016	2017	2018	AAPC	95% CI
Belgium	43.8	43.5	44.0	42.6	45.0	44.8	44.4	45.4	43.9	43.9	52.3	43.9	41.6	39.9	36.0	-1.1	[-1.7; -0.5]
Brussels-Capital Region	39.6	40.9	38.0	41.6	42.8	35.1	45.0	43.6	37.1	36.6	36.8	34.4	39.6	37.0	37.0	-0.8	[-1.7; 0.2]
Flemish Region	45.1	45.5	46.3	44.0	47.3	47.0	45.2	47.1	45.8	45.3	59.8	47.8	41.7	38.6	33.8	-1.7	[-2.6; -0.8]
Walloon Region	42.2	40.0	40.9	40.2	41.0	42.4	42.5	42.5	41.8	42.9	41.0	38.7	41.6	43.2	40.1	0.0	[-0.4; 0.4]

Females	2004	2005	2006	2007	2008	2009	2010	2011	2012	2013	2014	2015	2016	2017	2018	AAPC	95% CI
Belgium	27.8	28.1	28.7	28.5	29.1	28.5	28.5	28.2	29.1	28.9	31.4	28.6	27.4	26.3	24.9	-0.8	[-1.1; -0.5]
Brussels-Capital Region	26.8	26.6	30.4	25.2	25.4	22.4	27.1	27.2	24.7	25.4	25.4	26.0	27.0	24.9	25.3	-0.4	[-1.2; 0.5]
Flemish Region	28.0	27.7	29.8	29.4	31.0	30.4	30.4	28.4	30.2	30.0	35.0	29.9	27.9	26.6	24.1	-1.0	[-1.6; -0.4]
Walloon Region	27.8	29.0	26.0	27.6	26.4	26.8	25.5	28.0	28.4	27.8	26.3	26.9	26.4	26.1	26.0	-0.3	[-0.8; 0.1]

WSR=Age-Standardised Rate, using the World Standard Population (N/100,000 person-years)
 AAPC = Average Annual Percentage Change over the 2004-2018 period

Figure 4: Colorectal Cancer: Age-standardised incidence rates (WSR) by incidence year, sex and region



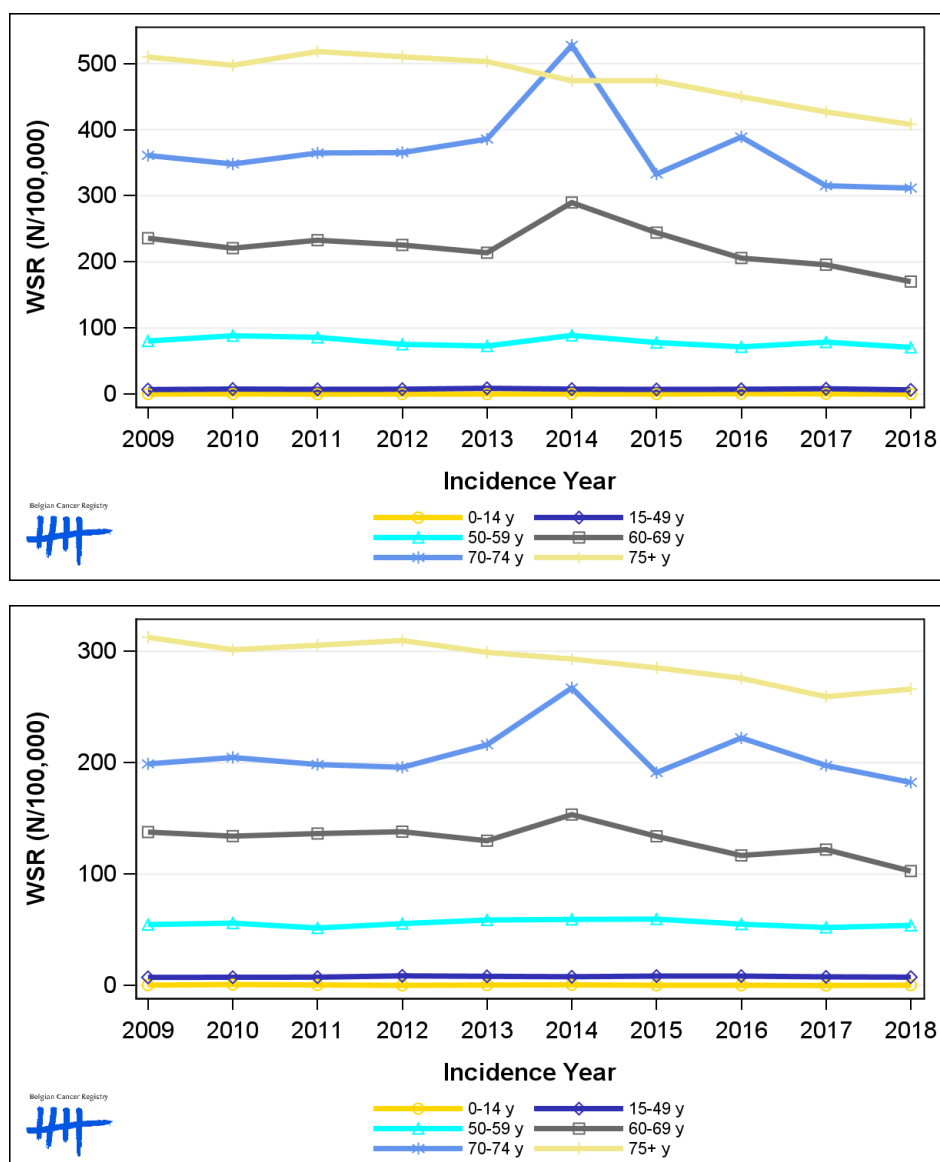
1.5. Incidence by broad age groups

Table 5: Colorectal Cancer: Number of new diagnoses and age-standardised incidence rates (WSR) by broad age groups and incidence year by sex, Belgium

	N										WSR									
	2009	2010	2011	2012	2013	2014	2015	2016	2017	2018	2009	2010	2011	2012	2013	2014	2015	2016	2017	2018
Males																				
All ages	4,529	4,578	4,784	4,730	4,792	5,592	4,905	4,739	4,575	4,288	44.8	44.4	45.4	43.9	43.9	52.3	43.9	41.6	39.9	36.0
0-14 y	3	5	2	3	4	5	2	9	7	2	0.3	0.5	0.2	0.3	0.4	0.5	0.2	0.8	0.6	0.2
15-49 y	216	244	231	239	275	242	222	230	248	198	7.1	7.9	7.5	7.7	9.0	7.8	7.3	7.6	8.3	6.7
50-59 y	590	655	647	577	566	703	630	584	645	578	80.5	88.5	86.0	75.4	73.0	89.1	78.2	71.7	78.8	70.8
60-69 y	1,224	1,173	1,277	1,294	1,274	1,778	1,512	1,310	1,257	1,105	235.9	220.8	232.9	225.6	213.9	289.8	244.3	205.9	195.8	170.3
70-74 y	745	721	749	727	752	1,030	663	799	707	746	361.1	348.1	364.8	365.3	385.7	527.5	333.0	389.0	315.2	311.7
75+ y	1,751	1,780	1,878	1,890	1,921	1,834	1,876	1,807	1,711	1,659	509.8	497.4	518.2	510.2	503.0	474.0	474.0	449.8	426.8	408.0
Females																				
All ages	3,725	3,736	3,753	3,892	3,882	4,123	3,843	3,760	3,644	3,572	28.5	28.5	28.2	29.1	28.9	31.4	28.6	27.4	26.3	24.9
0-14 y	4	9	6	2	5	7	3	3	1	4	0.4	0.9	0.6	0.2	0.5	0.7	0.3	0.3	<0.1	0.4
15-49 y	218	222	224	259	244	232	247	248	226	218	7.4	7.5	7.6	8.7	8.3	8.0	8.5	8.5	7.9	7.6
50-59 y	396	417	389	427	456	470	479	444	425	433	54.8	56.1	51.7	55.6	58.8	59.4	59.7	55.1	52.1	54.1
60-69 y	763	757	792	837	815	985	865	781	822	697	137.8	134.1	136.5	138.1	130.0	153.5	134.0	116.8	122.1	102.8
70-74 y	490	504	482	459	494	606	437	522	503	493	199.0	204.7	198.4	195.9	216.1	267.1	191.1	222.3	197.5	182.4
75+ y	1,854	1,827	1,860	1,908	1,868	1,823	1,812	1,762	1,667	1,727	312.6	301.4	305.5	309.7	299.1	293.1	285.2	275.9	259.3	266.1

N=Number of invasive tumours
WSR=Age-Standardised Rate, using the World Standard Population (N/100,000 person-years)

Figure 5: Colorectal Cancer: Age-standardised incidence rates (WSR) versus incidence year by broad age groups for males (top) and females (bottom), Belgium



2. Relative survival

Table 6: Colorectal Cancer: 5-year relative survival proportion by sex, age group and region, Belgium 2014-2018

	5-year relative survival 2014-2018 (%)					
	Males			Females		
	N at risk	estimate	95% CI	N at risk	estimate	95% CI
Overall	23,270	71.9	[71.0, 72.9]	18,429	71.8	[70.8, 72.9]
Age group						
15-49 years	1,108	75.7	[72.3, 78.8]	1,150	78.4	[75.4, 81.2]
50-64 years	6,037	76.7	[75.3, 78.1]	4,047	78.8	[77.2, 80.4]
65+ years	16,130	69.8	[68.6, 71.1]	13,237	69.0	[67.6, 70.3]
Region						
Brussels-Capital Region	1,517	65.1	[61.2, 69.0]	1,427	68.4	[64.4, 72.3]
Flemish Region	14,971	74.8	[73.7, 76.0]	11,372	75.0	[73.8, 76.3]
Walloon Region	6,783	66.5	[64.6, 68.4]	5,630	65.8	[63.9, 67.8]

Figure 6: Colorectal Cancer: relative survival proportion by sex, Belgium 2014-2018

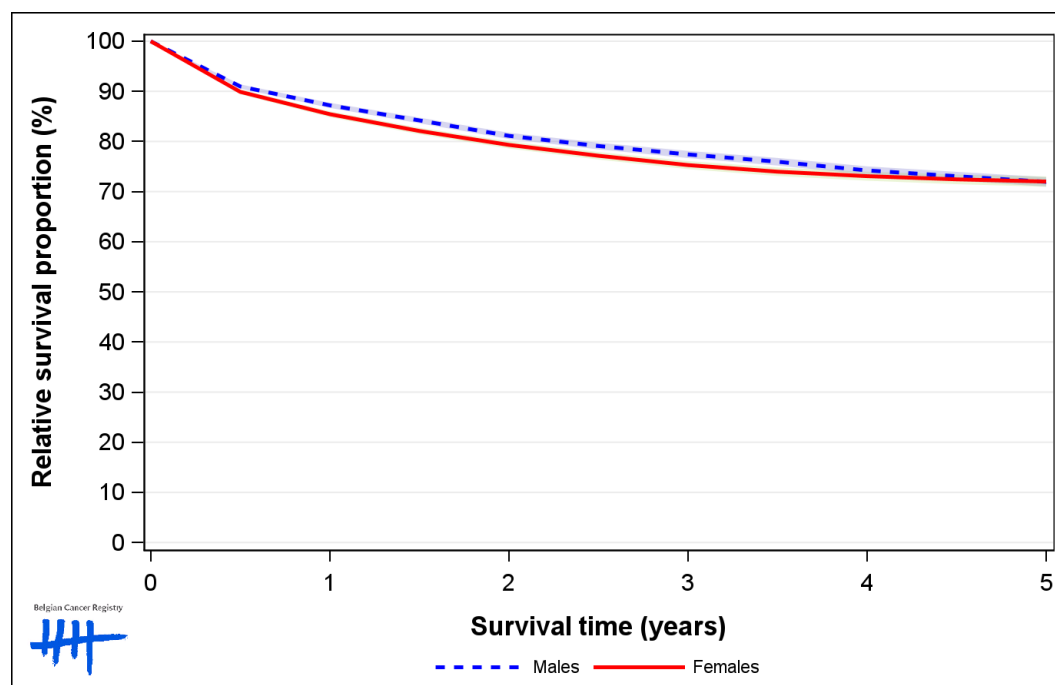


Figure 7: Colorectal Cancer: relative survival proportion by age group in males, Belgium 2014-2018

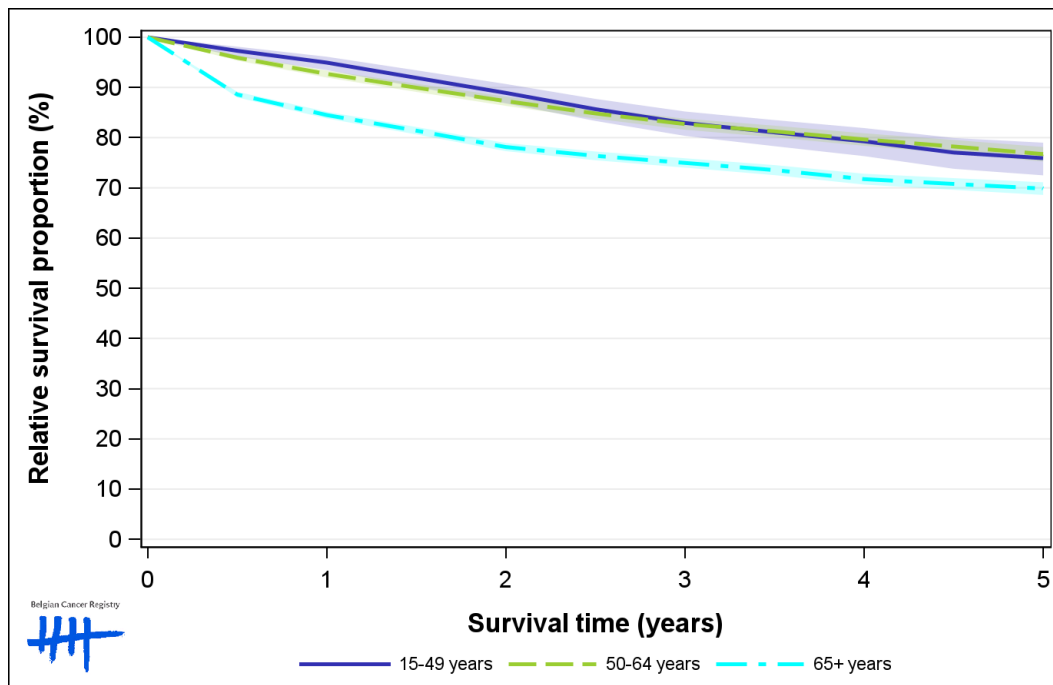


Figure 8: Colorectal Cancer: relative survival proportion by age group in females, Belgium 2014-2018

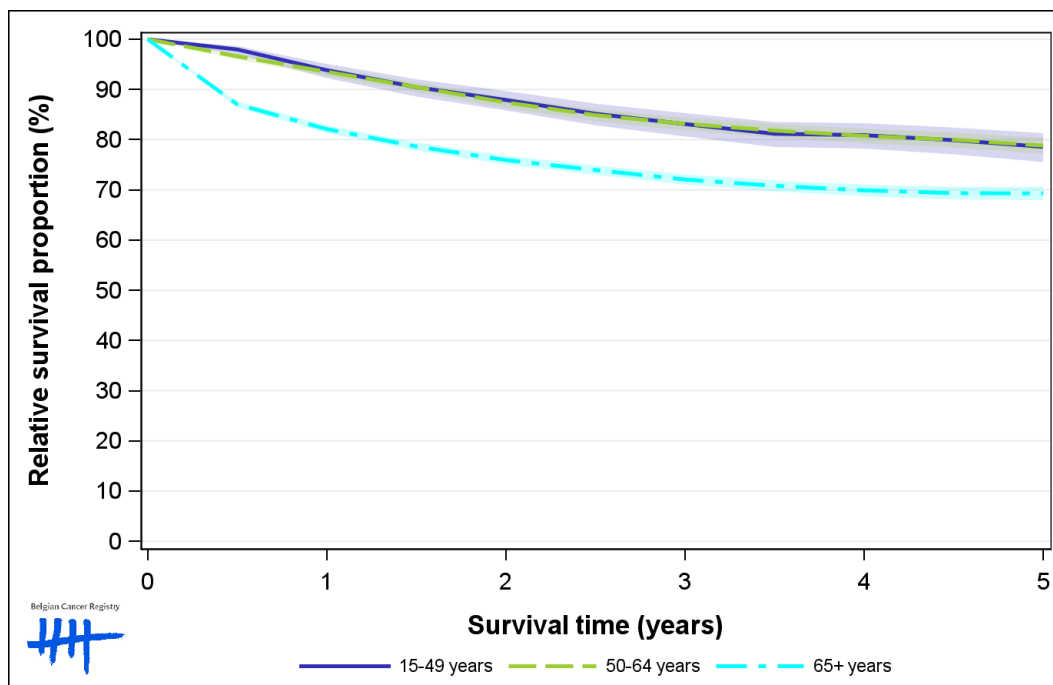


Figure 9: Colorectal Cancer: relative survival proportion by region in males, Belgium 2014-2018

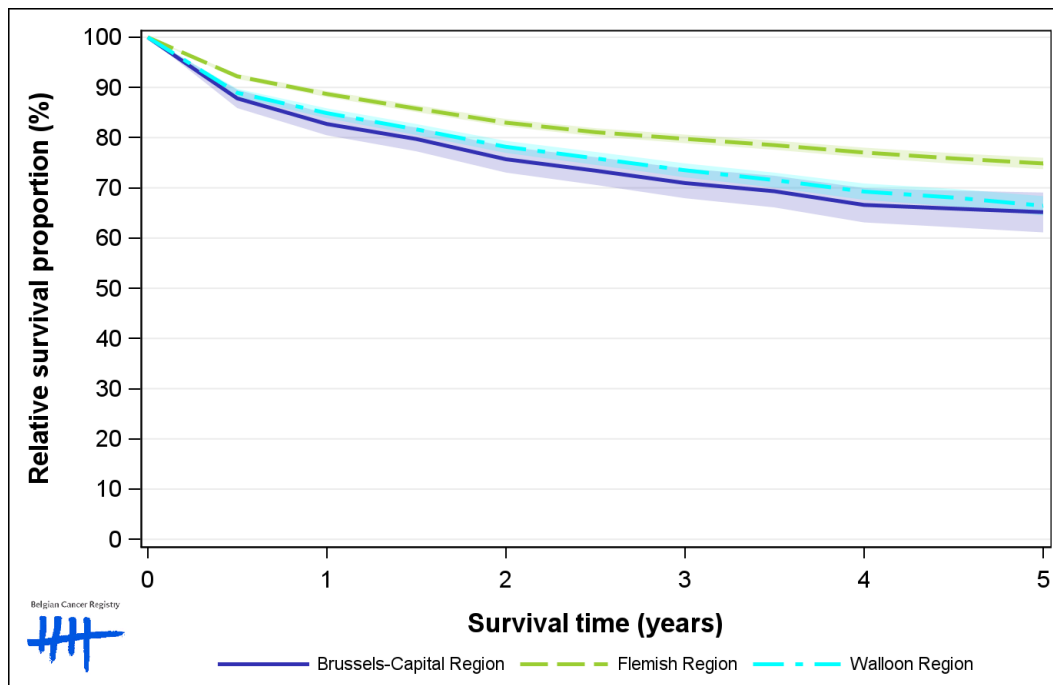


Figure 10: Colorectal Cancer: relative survival proportion by region in females, Belgium 2014-2018

