



Belgian Cancer Registry



Cancer Fact Sheet **Bladder Cancer**

ICD10 : C67

Belgium 2018

1. Cancer Incidence

1.1. Number of new diagnoses and incidence rates

Table 1: Bladder Cancer: Average age at diagnosis, number of new cancer diagnoses (N), crude rate (CR), age-standardised incidence rates (ESR and WSR) and cumulative risk by sex and region, 2018

Males	Age (years)	N	CR	ESR	WSR	CRi
Belgium	73.2	1,845	33.0	22.1	14.1	1.61
Brussels-Capital Region	73.2	130	22.2	21.6	13.7	1.57
Flemish Region	73.9	1,076	33.2	20.3	12.9	1.45
Walloon Region	72.1	639	36.1	25.8	16.7	1.92

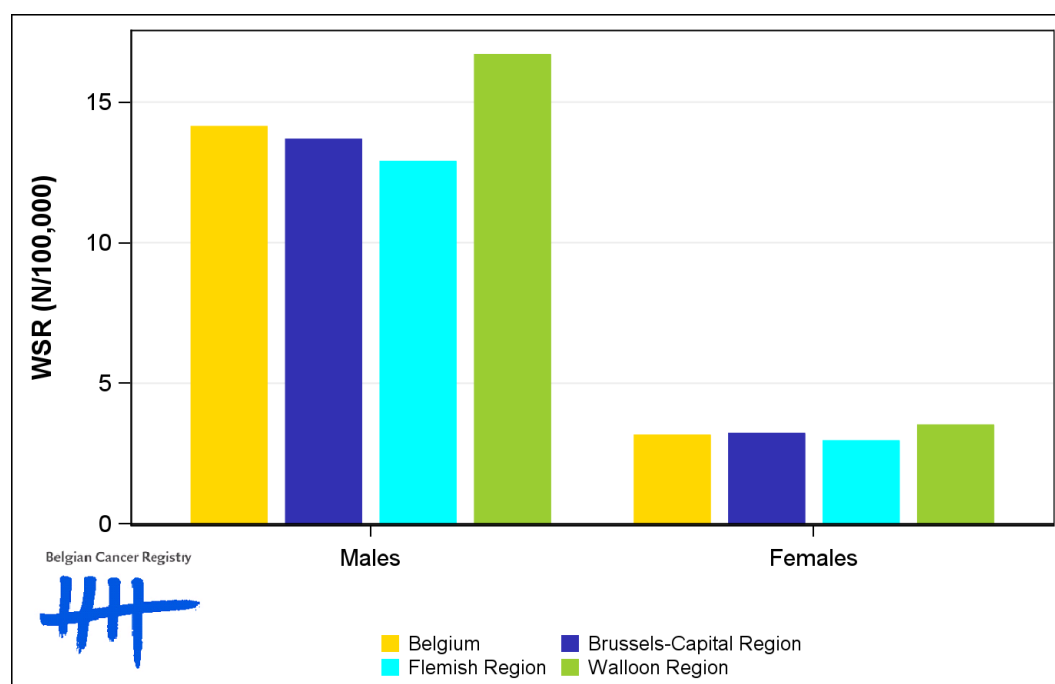
Females	Age (years)	N	CR	ESR	WSR	CRi
Belgium	74.9	524	9.1	4.9	3.2	0.35
Brussels-Capital Region	72.9	41	6.7	5.0	3.2	0.34
Flemish Region	75.3	296	8.9	4.6	2.9	0.33
Walloon Region	74.8	187	10.1	5.5	3.5	0.38

CR=Crude (all ages) Rate (N/100,000 person-years)
 ESR=Age-Standardised Rate, using the European Standard Population (N/100,000 person-years)
 WSR=Age-Standardised Rate, using the World Standard Population (N/100,000 person-years)
 CRi=Cumulative Risk for 0-74 years (%)

Belgian Cancer Registry



Figure 1: Bladder Cancer: Age-standardised incidence rates by sex and region, 2018



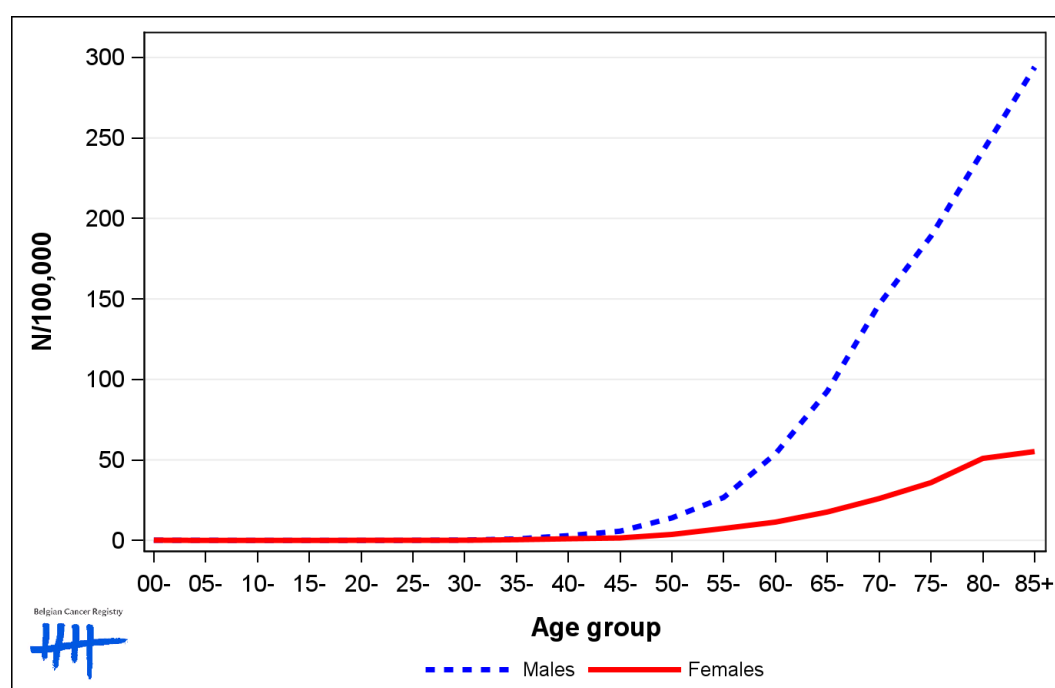
1.2. Age-specific incidence rates

Table 2: Bladder Cancer: Age-specific incidence rates, crude rate (CR) and age-standardised incidence rates (ESR and WSR) by sex, Belgium 2018

	00-	05-	10-	15-	20-	25-	30-	35-	40-	45-	50-	55-	60-	65-	70-	75-	80-	85+	CR	ESR	WSR
Males	0.0	0.0	0.0	0.0	0.0	0.0	0.3	1.3	2.7	5.8	16.6	21.8	53.3	86.6	136.2	186.3	241.9	258.7	33.0	22.1	14.1
Females	0.0	0.0	0.0	0.0	0.0	0.0	0.3	0.3	1.7	1.3	3.0	8.2	12.7	16.5	25.9	40.5	58.3	49.3	9.1	4.9	3.2

CR=Crude (all ages) Rate (N/100,000 person-years)
 ESR=Age-Standardised Rate, using the European Standard Population (N/100,000 person-years)
 WSR=Age-Standardised Rate, using the World Standard Population (N/100,000 person-years)

Figure 2: Bladder Cancer: Age-specific incidence rates by sex, 2014-2018



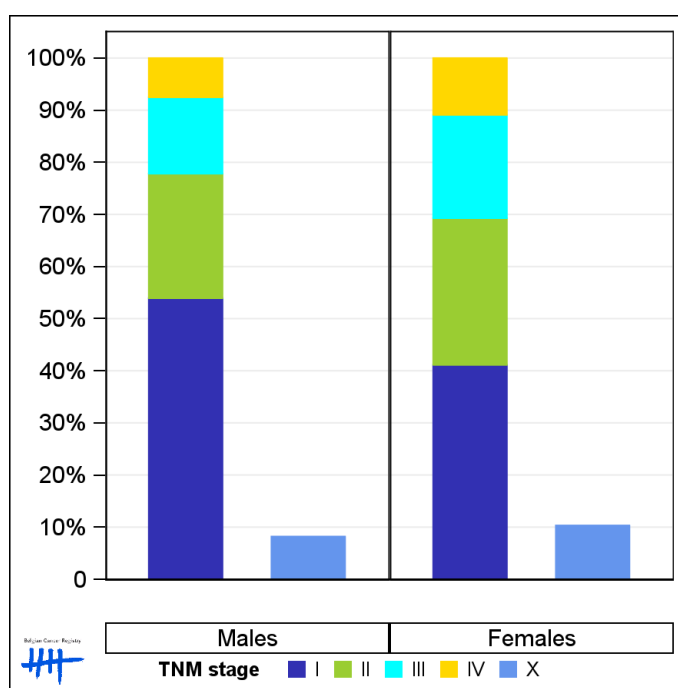
1.3. Combined stage

Table 3: Bladder Cancer: Distribution of combined stage by sex, Belgium 2018

	Stage I	Stage II	Stage III	Stage IV	Stage X	Stage NA	Total
Males							
N	912	404	248	127	151	3	1,845
%	49.4	21.9	13.4	6.9	8.2	0.2	100
Females							
N	193	132	93	51	54	1	524
%	36.8	25.2	17.7	9.7	10.3	0.2	100

Staging according to the TNM 8th edition (Ref: Brierley JD, Gospodarowicz MK, Wittekind Ch. TNM classification of malignant tumours, UICC 8th edition)
 Combined TNM stage : compilation of pathological (pTNM) and clinical (cTNM) stage. pTNM prevails over cTNM, except when cTNM stage is IV
 Stage X: diagnoses with an unknown stage
 Stage NA: diagnoses with a histological diagnosis where no stage can be evaluated (Not Applicable)

Figure 3: Bladder Cancer: Bar chart of known combined stage by sex, Belgium 2018



1.4. Trends in incidence

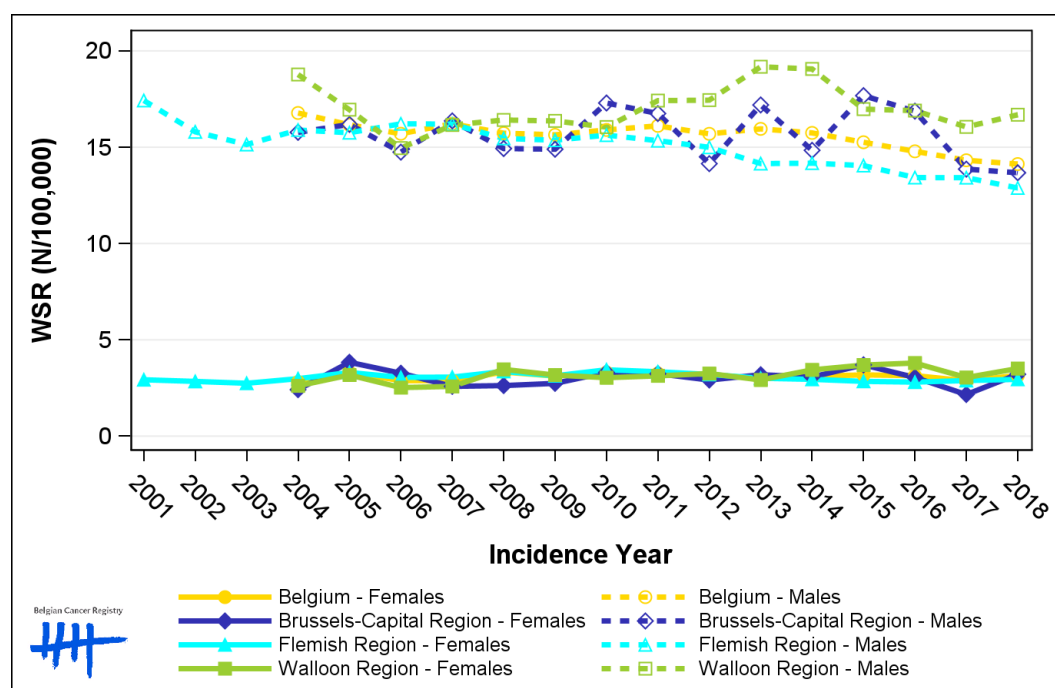
Table 4: Bladder Cancer: Age-standardised incidence rates (WSR) and average annual percentage change (AAPC) by incidence year, sex and region

Males	2004	2005	2006	2007	2008	2009	2010	2011	2012	2013	2014	2015	2016	2017	2018	AAPC	95% CI
Belgium	16.8	16.2	15.7	16.2	15.7	15.6	15.9	16.1	15.7	16.0	15.7	15.3	14.8	14.3	14.1	-1.0	[-1.3; -0.8]
Brussels-Capital Region	15.8	16.2	14.7	16.4	14.9	14.9	17.3	16.8	14.1	17.2	14.8	17.7	16.9	13.9	13.7	-0.3	[-1.4; 0.8]
Flemish Region	15.9	15.8	16.2	16.2	15.5	15.4	15.6	15.3	15.0	14.2	14.2	14.0	13.4	13.4	12.9	-1.5	[-1.7; -1.3]
Walloon Region	18.8	16.9	15.0	16.2	16.4	16.4	16.0	17.4	17.4	19.2	19.1	17.0	16.9	16.1	16.7	-0.6	[-1.4; 0.2]

Females	2004	2005	2006	2007	2008	2009	2010	2011	2012	2013	2014	2015	2016	2017	2018	AAPC	95% CI
Belgium	2.8	3.3	2.9	2.9	3.3	3.1	3.3	3.3	3.2	3.0	3.1	3.2	3.1	2.9	3.2	0.2	[-0.5; 0.9]
Brussels-Capital Region	2.4	3.8	3.3	2.6	2.6	2.7	3.3	3.2	2.9	3.2	3.1	3.7	3.0	2.2	3.2	0.1	[-1.9; 2.2]
Flemish Region	3.0	3.3	3.1	3.1	3.4	3.1	3.4	3.3	3.2	3.0	2.9	2.8	2.8	2.9	2.9	-0.2	[-0.8; 0.4]
Walloon Region	2.6	3.2	2.5	2.6	3.5	3.2	3.0	3.1	3.2	2.9	3.4	3.7	3.8	3.0	3.5	1.9	[0.6; 3.2]

WSR=Age-Standardised Rate, using the World Standard Population (N/100,000 person-years)
AAPC = Average Annual Percentage Change over the 2004-2018 period

Figure 4: Bladder Cancer: Age-standardised incidence rates (WSR) by incidence year, sex and region



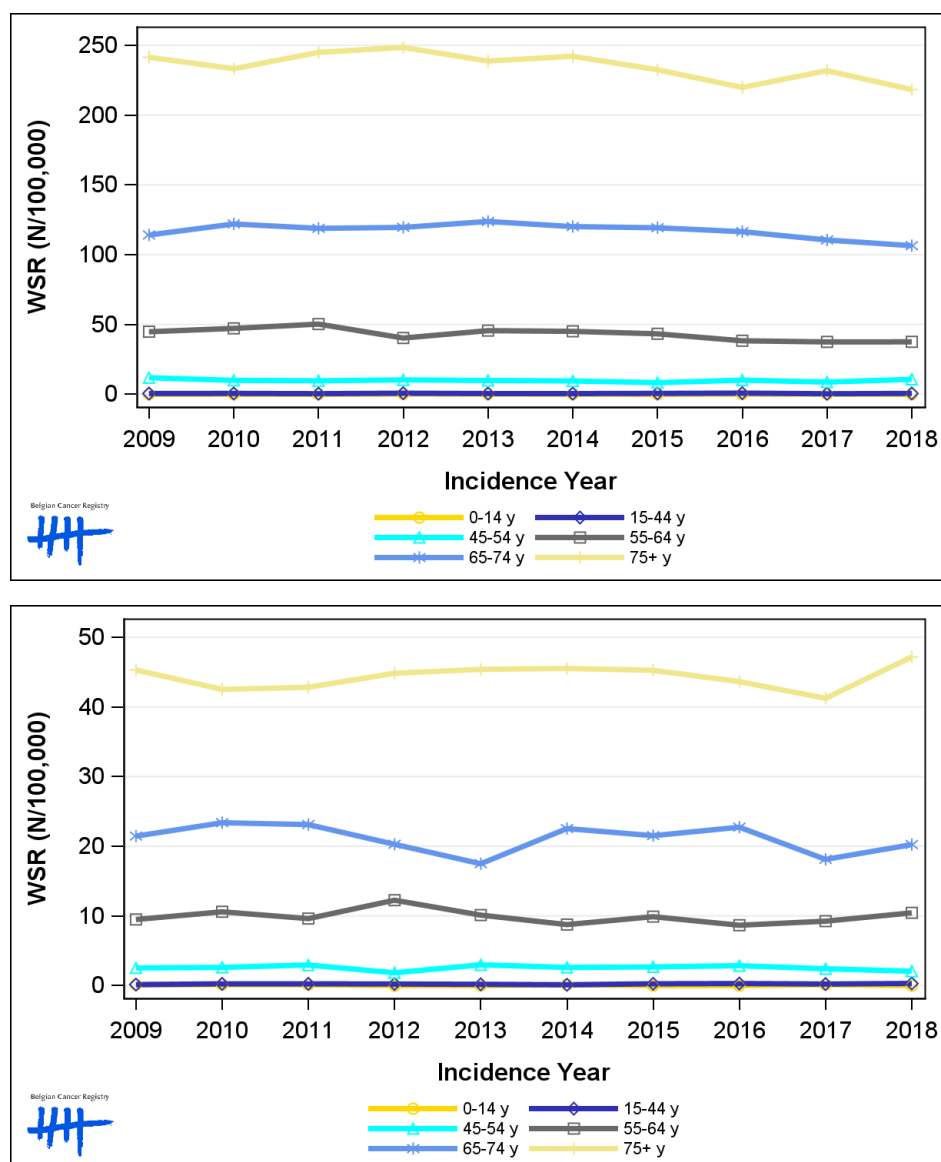
1.5. Incidence by broad age groups

Table 5: Bladder Cancer: Number of new diagnoses and age-standardised incidence rates (WSR) by broad age groups and incidence year by sex, Belgium

	N										WSR									
	2009	2010	2011	2012	2013	2014	2015	2016	2017	2018	2009	2010	2011	2012	2013	2014	2015	2016	2017	2018
Males																				
All ages	1,728	1,763	1,832	1,847	1,879	1,903	1,878	1,848	1,860	1,845	15.6	15.9	16.1	15.7	16.0	15.7	15.3	14.8	14.3	14.1
0-14 y	0	0	0	2	1	1	0	1	1	0	0.0	0.0	0.0	0.2	0.1	<0.1	0.0	0.1	0.1	0.0
15-44 y	15	17	12	21	14	13	17	22	10	16	0.5	0.6	0.4	0.8	0.5	0.5	0.6	0.8	0.4	0.6
45-54 y	95	81	80	86	82	81	71	86	73	91	11.8	9.9	9.7	10.3	9.9	9.5	8.3	10.1	8.7	10.7
55-64 y	282	304	333	267	305	304	296	268	266	268	44.8	47.2	50.3	40.3	45.6	45.1	43.3	38.3	37.5	37.5
65-74 y	505	545	527	546	575	572	583	587	582	583	114.1	122.0	118.9	119.6	123.8	120.1	119.3	116.5	110.5	106.4
75+ y	831	816	880	925	902	932	911	884	928	887	241.4	233.3	245.0	248.5	238.8	242.2	232.5	219.8	231.9	218.3
Females																				
All ages	465	477	473	494	480	506	508	505	465	524	3.1	3.3	3.3	3.2	3.0	3.1	3.2	3.1	2.9	3.2
0-14 y	1	1	1	0	0	1	0	0	1	0	0.1	0.1	0.1	0.0	0.0	0.1	0.0	0.0	0.1	0.0
15-44 y	4	7	7	6	5	3	7	7	6	8	0.1	0.3	0.3	0.2	0.2	0.1	0.3	0.3	0.2	0.3
45-54 y	20	21	24	15	25	22	22	24	20	17	2.5	2.6	3.0	1.8	3.0	2.6	2.7	2.9	2.4	2.1
55-64 y	62	70	65	83	69	61	69	62	68	77	9.5	10.6	9.6	12.3	10.1	8.8	9.9	8.7	9.2	10.4
65-74 y	106	120	117	109	90	121	116	126	105	122	21.5	23.4	23.1	20.3	17.5	22.5	21.5	22.7	18.1	20.2
75+ y	272	258	259	281	291	298	294	286	265	300	45.3	42.5	42.8	44.8	45.4	45.5	43.6	41.2	47.2	

N=Number of invasive tumours
WSR=Age-Standardised Rate, using the World Standard Population (N/100,000 person-years)

Figure 5: Bladder Cancer: Age-standardised incidence rates (WSR) versus incidence year by broad age groups for males (top) and females (bottom), Belgium



2. Relative survival

Table 6: Bladder Cancer: 5-year relative survival proportion by sex, age group and region, Belgium 2014-2018

	5-year relative survival 2014-2018 (%)					
	Males			Females		
	N at risk	estimate	95% CI	N at risk	estimate	95% CI
Overall	9,290	57.2	[55.7, 58.9]	2,496	47.3	[44.4, 50.2]
Age group						
15-59 years	981	71.5	[67.9, 74.9]	276	60.8	[53.6, 67.4]
60-74 years	3,783	63.7	[61.6, 65.9]	783	59.6	[55.1, 63.9]
75+ years	4,526	47.2	[44.5, 50.1]	1,437	36.7	[32.6, 41.1]
Region						
Brussels-Capital Region	693	51.3	[45.7, 57.0]	196	41.5	[31.8, 51.5]
Flemish Region	5,466	58.5	[56.5, 60.7]	1,446	48.6	[44.8, 52.5]
Walloon Region	3,131	56.3	[53.5, 59.1]	854	46.3	[41.5, 51.2]

Figure 6: Bladder Cancer: relative survival proportion by sex, Belgium 2014-2018

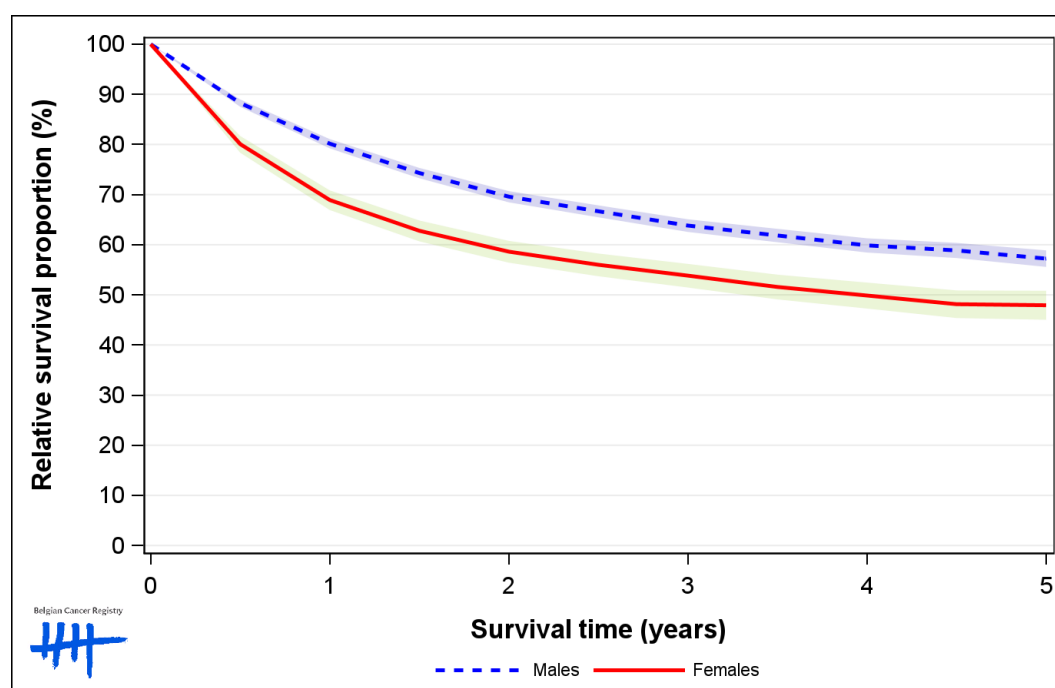


Figure 7: Bladder Cancer: relative survival proportion by age group in males, Belgium 2014-2018

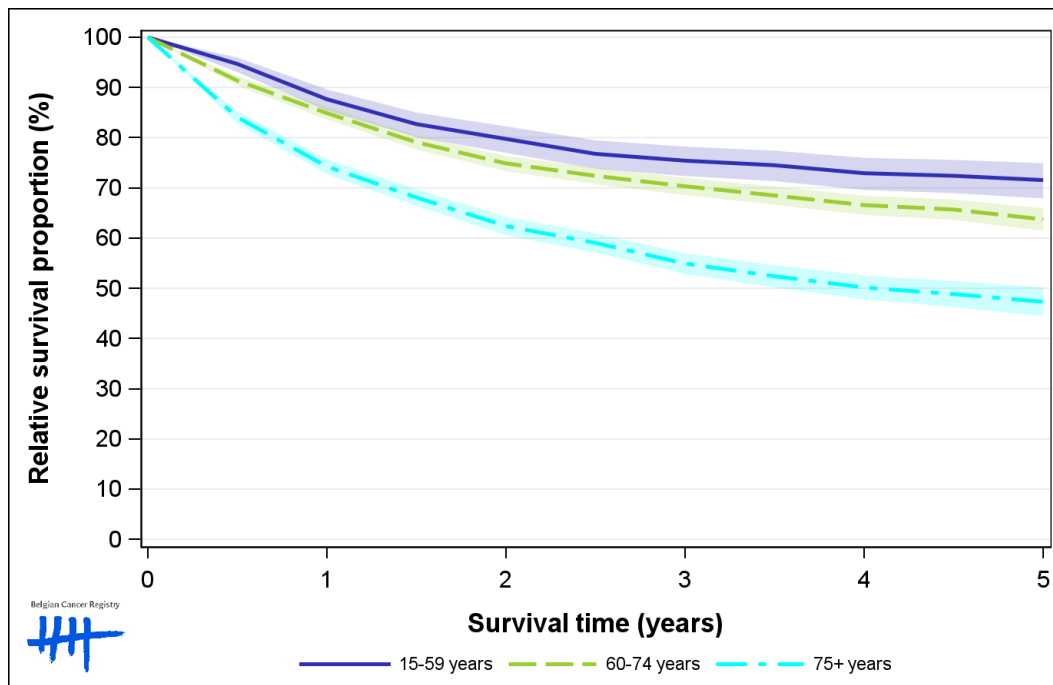


Figure 8: Bladder Cancer: relative survival proportion by age group in females, Belgium 2014-2018

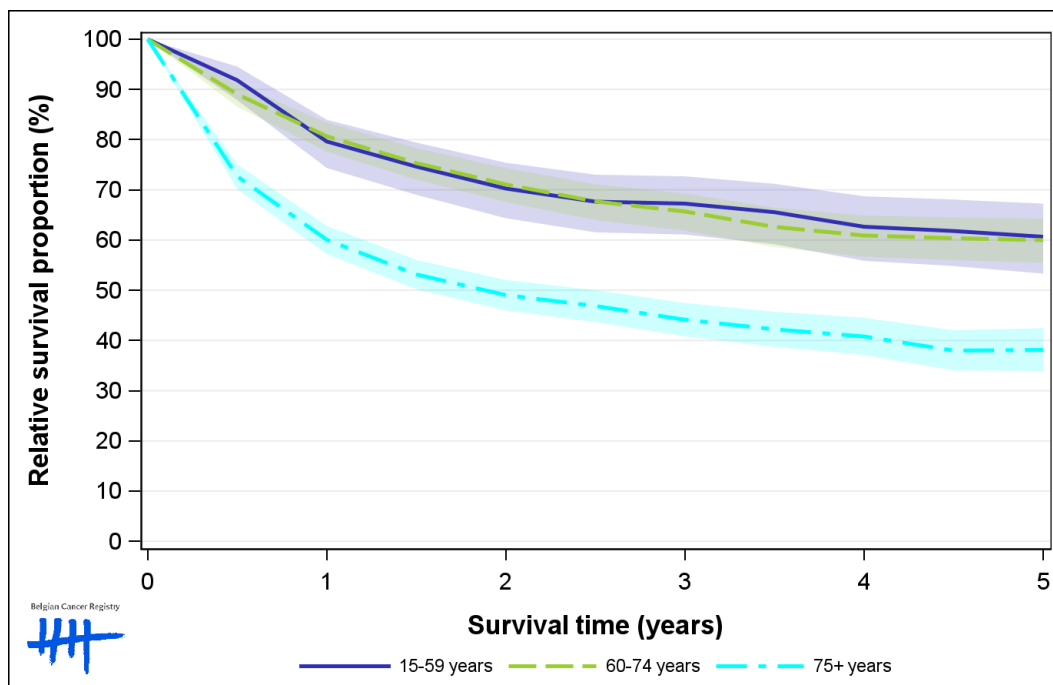


Figure 9: Bladder Cancer: relative survival proportion by region in males, Belgium 2014-2018

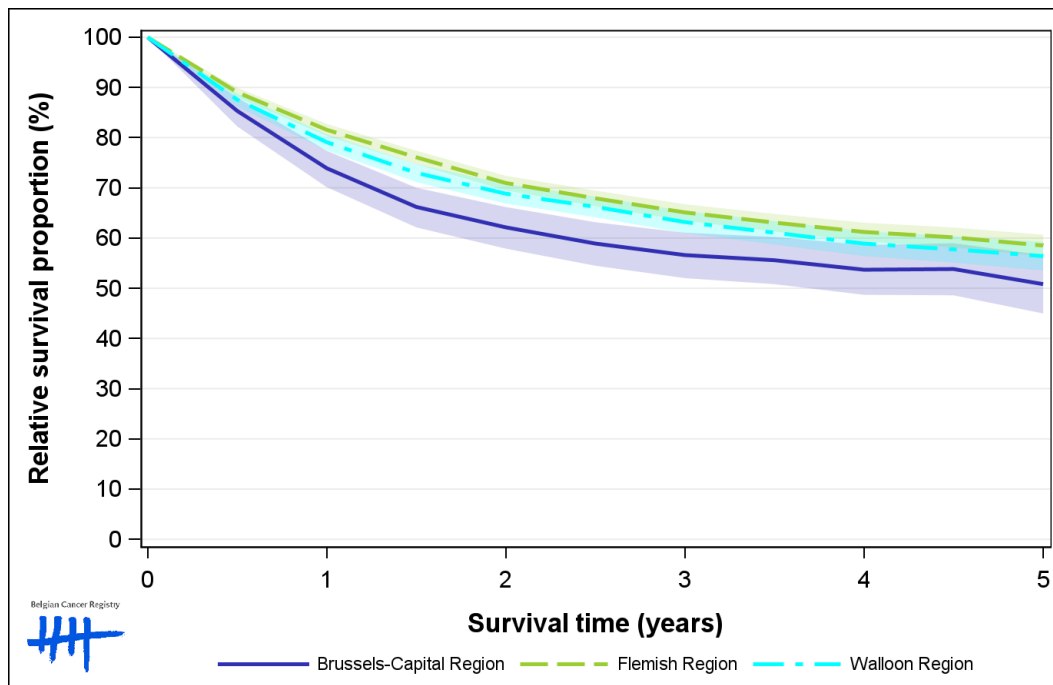


Figure 10: Bladder Cancer: relative survival proportion by region in females, Belgium 2014-2018

